

Paulette Shawl

By Noriko Ho



#PauletteShawl

Materials:

Yarn

Malabrigo Mechita (100% superwash merino; 420 yds/100 g)

Color A: 1 skein in Water Green or 420 yds of a fingering weight yarn

Color B: 1 skein (see below note) in Aniversario or 438 yds of a fingering weight yarn (This designer used almost an entire skein of Mechita for the demo without running out. However, some test knitters did run out of B with similar yardage. You may want to buy a second skein to assure you have enough.)

Needles: US 4 (3.5mm) circular needles, 32"-40" recommended for length of shawl. *Or size to obtain gauge.*

Notions: 6 st markers, tapestry needle

Gauge

28sts x 36 rows = 4" x 4" [10cm x 10cm], unblocked in stockinette st. While gauge is not crucial to this project, it may affect the amount of yardage used for the shawl.

Final Dimensions

50" [127cm] width x 18" [47.5cm] deepest height.

Images, text, and pattern © norichan knits 2015. This pattern is for personal use only.
Questions or comments? Email: hello@norichanknits.com; Ravelry: [norichan](#); Instagram: [@norichanknits](#)

Shawl Pattern

Garter Tab

Using your preferred provisional cast on, CO 3 sts using Color A.

Rows 1-10: k to end

Row 11: k3; turn rectangle and pick up and knit 1 stitch in each of 5 garter stitch ridges on side edge of tab; remove waste yarn from 3 provisionally cast-on stitches, place stitches on needles, and k3. (11 sts)

Set up rows:

Row 1 (WS): k3, pm, p5, pm, k3

Row 2 (RS): k3, sm, M1L, k1, M1R, *pm, k1, pm, M1L, k1, M1R; repeat from * to m, sm, k3 (17 sts)

Row 3 (and all WS rows): k3, p to last m, k3 (slipping all markers as needed)

Row 4: k3, sm, M1L, k to m, M1R, *sm, k1, sm, M1L, k to m, M1R; repeat from * to last m, sm, k3

Row 6: Repeat row 4

Row 8: k3, sm, M1L, k2, flower st, k2, M1R, *sm, k1, sm, M1L, k2, flower st, k2, M1R; repeat from * to last m, sm, k3 (35 sts)

Rows 9 – 15: Repeat rows 3 & 4, ending on the WS (53 sts)

All of the Flower Section pattern repeats will be charted. I have charted **only** the pattern section repeats. The charts do not include the garter border, the single stockinette stitch between your pattern repeats, nor the WS rows. Slip markers as established. Written out versions of each chart are also included for those that prefer this. All charts and written versions can be found at the end of the pattern.

Flower Section 1 *(continue using Color A)*

Row 1 (RS): k3, sm, work appropriate row from Chart A, *sm, k1, sm, work appropriate row from Chart A; repeat from * to last m, sm, k3

Row 2 (and all WS rows): k3, p to last m, k3 (slipping all m as needed)

Repeat Rows 1-2 until you have worked rows 1-8 of Chart A three times. Then work rows 1-7 once more, ending on the RS. (149 sts)

If you count the number of "flowers" along the side edge of your section, you should count five flowers at this point in time. :o)

Images, text, and pattern © norichan knits 2015. This pattern is for personal use only.
Questions or comments? Email: hello@norichanknits.com; Ravelry: [norichan](#); Instagram: [@norichanknits](#)

Stripes Section 1

Note: All of the Stripes Sections will be written out in full; no charts for these sections.

Attach color B without cutting color A (carrying color A up the side of the shawl will help reduce the number of ends you will need to weave in later).

Row 1 (WS, Color B): k3, p to last m, k3 (slipping all markers as needed)

Row 2 (RS, Color B): k3, sm, M1L, p to m, M1R, *sm, k1, sm, M1L, p to m, M1R; repeat from * to last marker, sm, k3

Switch back to color A (while carrying color B up the side).

Row 3 & 5 (Color A): k3, p to last m, k3

Row 4 & 6 (Color A): k3, sm, M1L, k to m, M1R, *sm, k1, sm, M1L, k to m, M1R; repeat from * to last m, sm, k3

Work Rows 1-6 a total of three times, with Rows 1 & 2 always in color B and Rows 3-6 always in color A. Then switch to color B and repeat Rows 1-2 once more (ending on RS row). Cut color A, leaving tail long enough to weave in. (209 sts)

Flower Section 2

Use color B for the entirety of Flower Section 2.

Row 1 (WS): k3, p to last m, k3

Row 2: k3, M1L, k to m, M1R, *k1, M1L, k to m, M1R; repeat from * to last m, k3

Rows 3 & 5: Repeat Row 1

Row 4: Repeat Row 2 (221 sts)

Row 6 (RS): k3, k appropriate row from Chart A, *k1, work appropriate row from Chart A; repeat from * to last m, k3

Row 7 (and all WS rows): k3, p to last m, k3

Repeat Rows 6-7 until you have completed rows 1-8 of Chart A two times. Then work rows 1-7 of Chart A once more, ending on the RS. (293 sts)

Stripes Section 2

Attach color A without cutting color B (carry B up the side).

Row 1 (WS, Color A): k3, p to last m, k3

Row 2 (RS, Color A): k3, M1L, p to m, M1R, *k1, M1L, p to m, M1R; repeat from * to last marker, k3

Switch back to color B (while carrying color A up the side).

Row 3 & 5 (Color B): k3, p to last m, k3

Row 4 & 6 (Color B): k3, M1L, k to m, M1R, *k1, M1L, k to m, M1R; repeat from * to last m, k3

Work Rows 1-6 a total of two times, with Rows 1-2 always in color A and Rows 3-6 always in color B. (329 sts)

At this point in time, the shawl will no longer have three pattern repeat sections. There will still be the three garter stitch border edges on each side, however, the middle will be one continuous pattern repeat. Once again, the chart does not contain WS rows.

Please note that in the Trellis Section 1, Row 2 (the purl ridge), has a different increase schedule than before, and you'll be removing the four central markers. You will be using color A, so color B can now be cut with a tail long enough to weave in.

Trellis Section 1

Use color A for the entirety of Trellis Section 1.

Row 1 (WS): k3, p to last m, k3

Row 2 (RS): k3, sm, p to m, **M1Rp, remove m (RM)**, p1, **RM**, p to m, **M1Rp, RM**, p1, **RM**, p to m, **M1Rp**, sm, k3 (332 sts)

Row 3: Repeat Row 1

Row 4 (RS): k3, sm, work appropriate row from Chart **B**, sm, k3

Row 5 (WS): k3, sm, p to m, sm, k3

Work Rows 4-5 until rows 1-18 of Chart B has been completed once. Then work rows 1-15 of Chart B, ending on the RS. (366 sts)

Stripes Section 3

Attach color B without cutting color A (carry up the side).

Row 1 (WS, Color B): k3, p to m, k3

Row 2 (RS, Color B): k3, sm, M1L, p180, M1Lp, p180, M1R, sm, k3 (369 sts)

Switch back to color A (while carrying color B up the side).

Row 3 & 5 (Color A): Repeat Row 1

Row 4 & 6 (Color A): k3, sm, M1L, k to m, M1R, sm, k3

Switch back to Color B. Cut color A with a tail long enough to weave in.

Row 7 (Color B): Repeat Row 1

Row 8 (Color B): k3, sm, p to m, sm, k3 (373 sts)

Trellis Section 2

Use color B for the entirety of Trellis Section 2.

Row 1 (WS): k3, sm, M1Rp, p122, M1Rp, p122, M1Lp, p123, M1Lp, sm, k3 (377 sts)

Row 2 (RS): k3, sm, work appropriate row from Chart B, sm, k3

Row 3: k3, sm, p to m, sm, k3

Work Rows 2-3 until rows 1-18 of Chart B have been completed once. Then work rows 1-15 once more, ending on the RS. (411 sts)

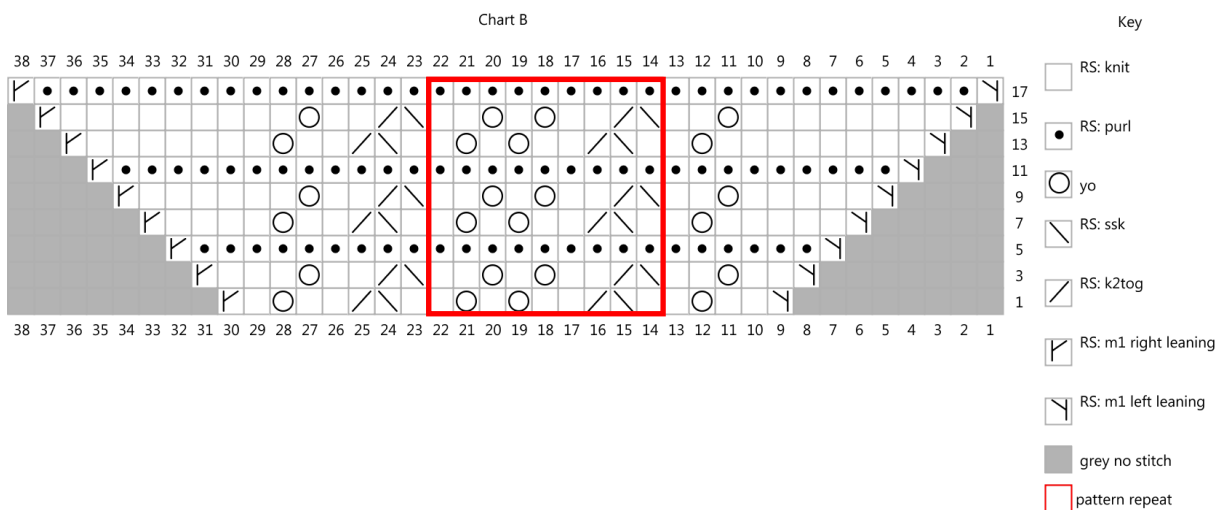
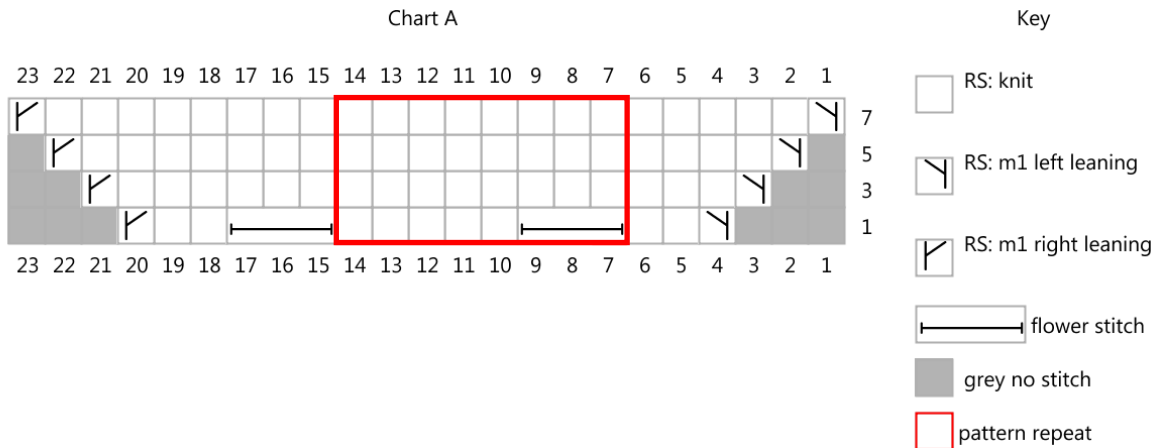
Join color A. Cut color B with a tail long enough to weave in.

Finishing

Use color A for the entirety of the Finishing section.

Row 1 (WS): k3, sm, p to m, sm, k3

BO purlwise using Jeny's Surprisingly Stretchy Bind Off and color A. Weave in all ends and wet block to dimensions. Enjoy! :oD



Abbreviations:

BO – bind off

CO – Cast on

Flower Stitch – knit 3 together without dropping st off of needle, knit into 1st st (the rightmost st on the left needle) without dropping sts off needle, knit 2nd and 3rd together, now drop all sts off left needle.

M1L - make one left leaning knit st by taking the left needle, front to back, under the strand of yarn that runs between the st just made and the next st on the left needle.
Ktbl.

M1Lp – make one left leaning purl st by taking the left needle, front to back, under the strand of yarn that runs between the st just made and the next st on the left needle. Purl through back loop.

M1R - make one right leaning knit st by taking the left needle, back to front, under the strand of yarn that runs between the st just made and the next st on the left needle. Knit front leg of stitch.

M1Rp – make one right leaning purl st by taking the left needle, back to front, under the strand of yarn that runs between the st just made and the next st on the left needle. Purl front leg of stitch.

pm – place marker

sm – slip marker

Images, text, and pattern © norichan knits 2015. This pattern is for personal use only.
Questions or comments? Email: hello@norichanknits.com; Ravelry: [norichan](#); Instagram: [@norichanknits](#)

Written Chart Directions

Chart A:

Row 1 (RS): M1L, k2, *flower st, k5; repeat to last 5 sts, flower st, k2, M1R

Row 2 (and all WS rows): p to end

Row 3, 5, and 7: M1L, k to end, M1R

Row 8: p to end

Chart B:

Row 1 (RS): M1L, k2, yo, k1, *k1, ssk, k2tog, k2, yo, k1, yo, k1; repeat from * to last 8 sts, k1, ssk, k2tog, k2, yo, k1, M1R

Row 2 (and all WS rows): p to end

Row 3: M1L, k2, yo, k2, *ssk, k2tog, k2, yo, k1, yo, k2; repeat from * to last 9 sts, ssk, k2tog, k2, yo, k3, M1R

Row 5: M1L, p to end, M1R

Row 7: M1L, k5, yo, k1, *k1, ssk, k2tog, k2, yo, k1, yo, k1; repeat from * to last 11 sts, k1, ssk, k2tog, k2, yo, k4, M1R

Row 9: M1L, k5, yo, k2, *ssk, k2tog, k2, yo, k1, yo, k2; repeat from * to last 12 sts, ssk, k2tog, k2, yo, k6, M1R

Row 11: M1L, p to end, M1R

Row 13: M1L, k8, yo, k1, *k1, ssk, k2tog, k2, yo, k1, yo, k1; repeat from * to last 14 sts, k1, ssk, k2tog, k2, yo, k7, M1R

Row 15: M1L, k8, yo, k2, *ssk, k2tog, k2, yo, k1, yo, k2; repeat from * to last 15 sts, ssk, k2tog, k2, yo, k9, M1R

Row 17: M1L, p to end, M1R

Row 18: p to end