



Technical bulletin: New functionalities iPac AI 2.0 line

This document is intended to inform about the new functionalities of the Bolide NVRs with AI technology that will be compatible with the models of second generation cameras from the iPac AI line:

First generation cameras

- BN8036AI
- BN8029AI
- BN8037AI
- BN8029AVAIRAI
- BN9029AI
- BN9036AI
- BN9029AVAIRAI

Second generation of cameras

- BN8036AI/NDAA
- BN8029AI/NDAA
- BN8037AI/NDAA
- BN8029AVAIRAI/NDAA
- BN9029AI/NDAA
- BN9036AI/NDAA
- BN9029AVAIRAI/NDAA

The following table shows a comparative table of the functionalities depending on the NVR model:

SMP / 4K iPac AI Cameras	F	irst generation iPac AI cameras	Second generation iPac AI cameras
NVR		AI NVR-S G1 y IPC AI	AI NVR plus G2 AI IPCs
Perimeter intrusion (PID - Perimeter Intrusion Detection) *		✓	✓
LCD - Line Crossing Detection) *		✓	✓
(SOD - Stationary Object Detection) *		✓	✓
(CC- Crossing Counting) *		✓	✓
(FD - Face Detection) *		✓	✓
(HVD - Human & Vehicle Detection) *		X	✓
(HM - Heat Map) *		X	✓

* The NVR BN-NVR / XXNX-S models and the new NDAA models with IPac NX AI Camera support all the analytics described.

Enhanced functionalities



Face Detection and Recognition

Compared to first-generation AI, the new version collects and calculates the analytical values, making the comparison to reduce the load on the NVR by previously carrying out the process and speeding up the recognition process.



Human and Vehicle Detection

Simultaneous Human and Vehicle Form Detection or can also be arbitrarily selected.

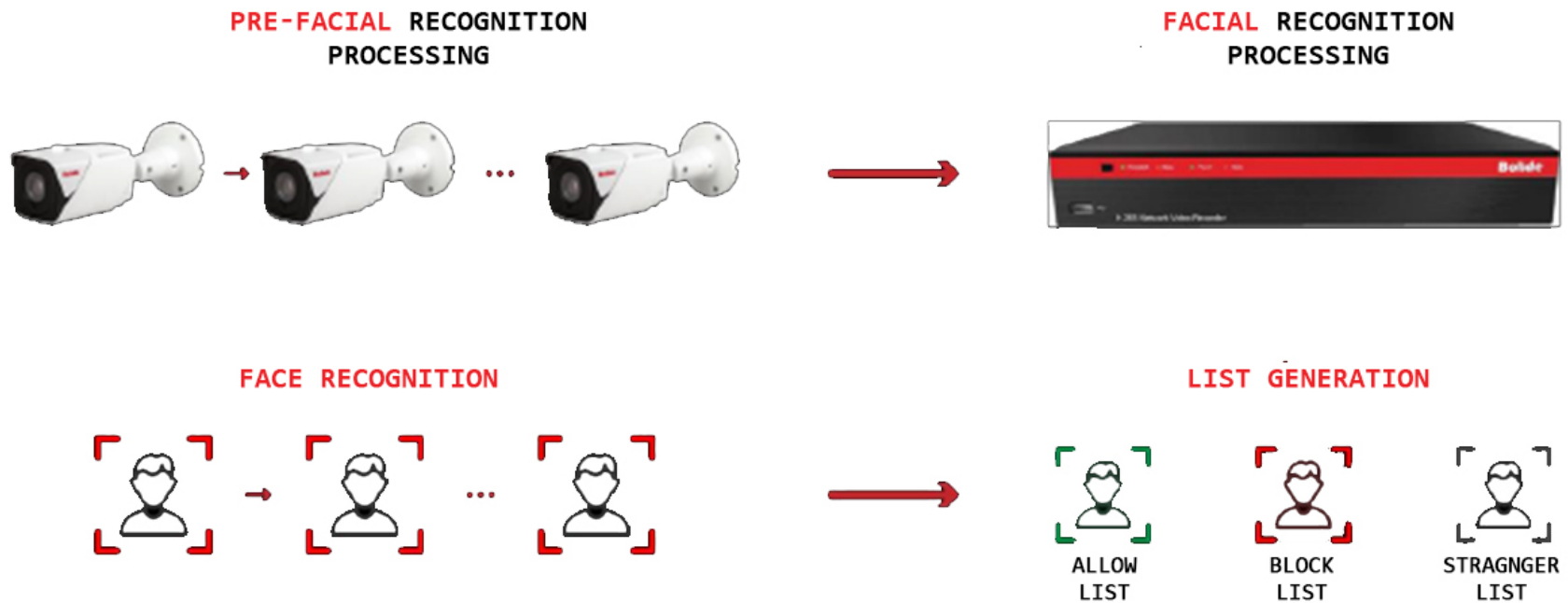


Intelligent Motion Detection

In the daily use of this function many false alarms are generated, such as the movement of trees or the activity of small animals, climatic changes, this function allows to identify only human activity reducing these false alarms.

Face Detection and Recognition

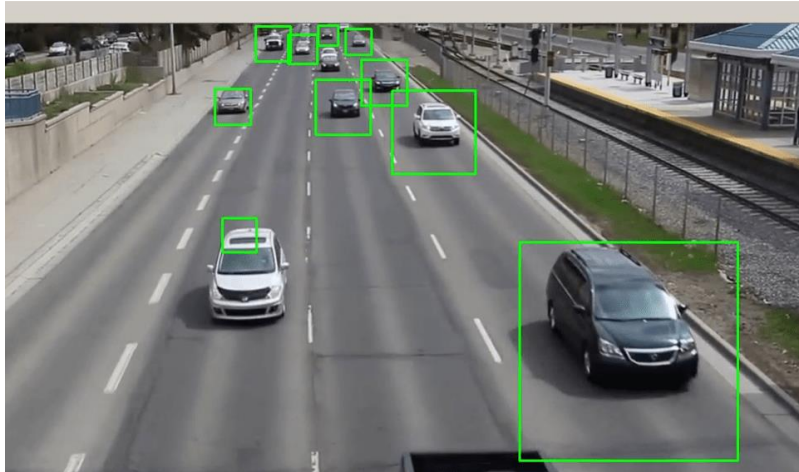
Supports multi-channel recognition, the front-end (camera) takes care of the pre-processing and sends it to the backend (NVR) who compares it and performs the process in a faster way.



Human and Vehicle Detection

Human and vehicle detection is mutually exclusive with other analytics, that is, if this functionality is activated, no other analytics can be used and it must also have sufficient light when installing.

Vehicle Detection

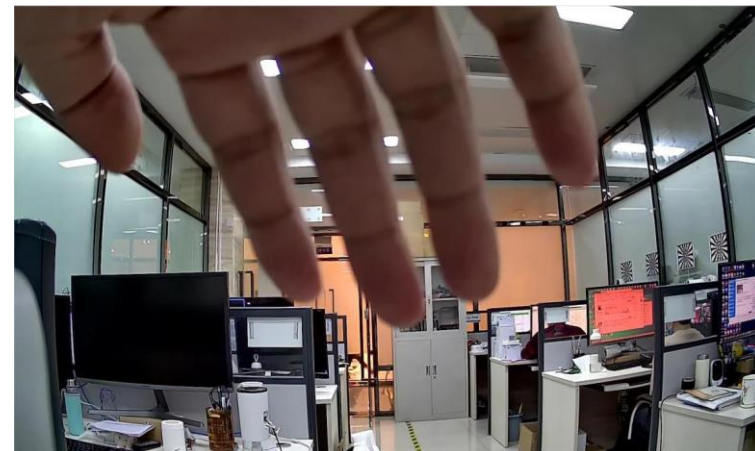
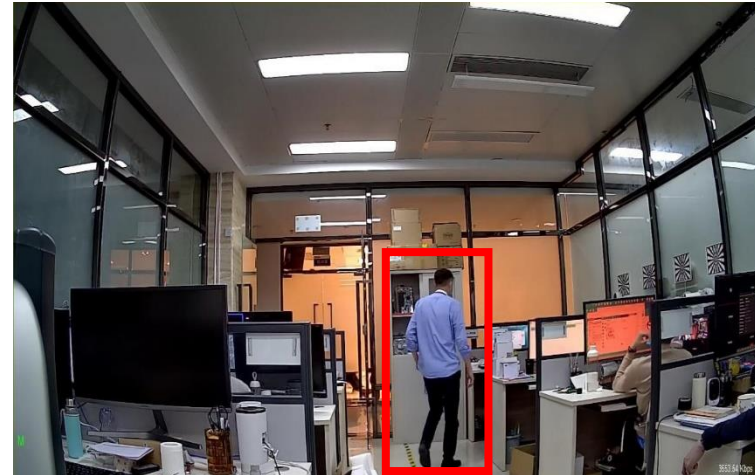
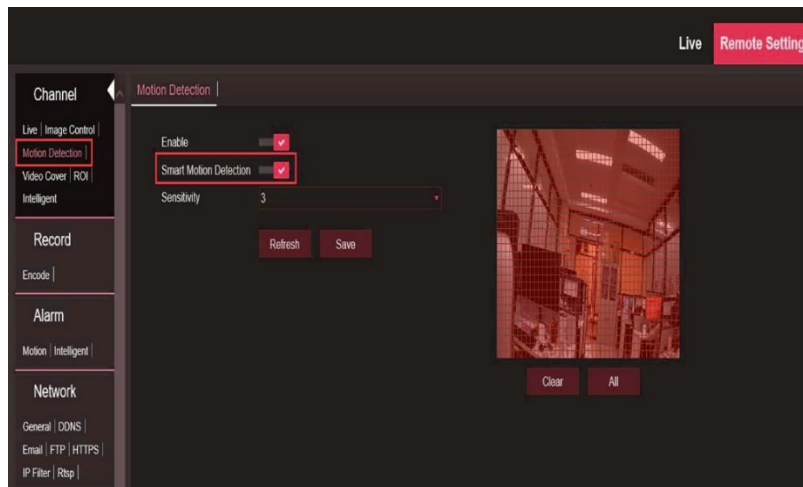


Human Detection



Intelligent Motion Detection

In the daily use of this function many false alarms are generated, such as the movement of trees or the activity of small animals, climatic changes, this function allows to identify only human activity reducing these false alarms.

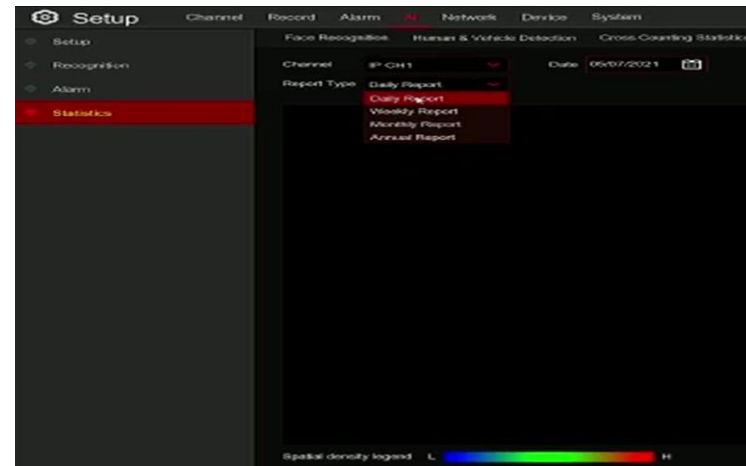


Heat Map

Heat Map: It is a graphical representation of the data represented by colors. The camera's heatmap function is generally used to analyze visit times and customer dwell time in a configured area.



It allows to carry out the query By Date, Daily, Weekly, Monthly or annually.



APP with New Features

- **Facial Recognition**
 - o Add faces
 - o Face search
 - o Search by name
 - o Group edit
- **Detection of Vehicles and People**
 - o Enables smart searches

