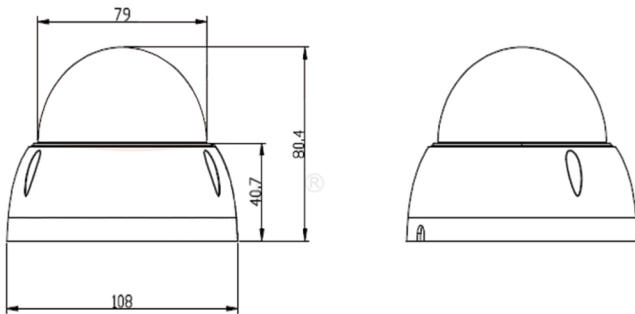


Specifications

Image Sensor	1 / 3" CMOS
Effective Pixels	2560 (H) x 1920 (V) 1920 (H) x 1080 (V)
Resolution	5MP / 4MP / 1080P / 960H
Signal System	NTSC / PAL
Sync System	Internal Sync
Video Output	AHD / TVI / CVI / CVBS (Analog) Compatible
S/N Ratio	48Db (min) AGC (closed)
Dimension	80mm x 94 mm
Lens	Manual
Power Input	12VDC
Power Dissipation	88mA – 93mA
Transmission Distance	300 M
Working Temperatur	-40° ~ 60° C
Humidity	Less Than 85% RH
Storage Temperature	-40° ~ 60° C



Dimension



Highlights

- 5MP / 4MP / 2MP / CVBS Video
- Supports AHD, TVI, CVI, and Analog Video Formats
- 2.8mm Wide Angle Lens
- IR Up to 65 Feet
- IP66 Weatherproof Rated Housing
- 12VDC

Nine formats in one camera

