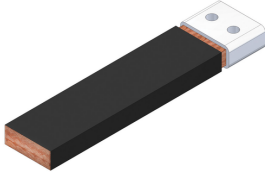


# NVENT ERIFLEX FLEXBUS CONDUCTOR



## CERTIFICATIONS



## FEATURES

Flexible insulated copper-plated, aluminum flat braid

Better current/ampacity than cable due to skin effect

Much more flexible than cable

No bending radius to respect

Ready-to-use from one side with direct connection on busbar or circuit breaker palm

Only one conductor per phase from 400kVA (560 A) to 1600kVA (2250 A) and two conductors per phase for 2000kVA (2800 A) to 3150kVA (4435 A)

## SPECIFICATIONS

-|-

<b>Wire Diameter</b>	0.20 mm
<b>Insulation Thickness</b>	2.5 – 3.5 mm
<b>Dielectric Strength</b>	20 kV/mm
<b>Nominal Voltage, IEC</b>	1,000 VAC;1,500 VDC
<b>Connector Material</b>	Copper
<b>Conductor Material</b>	Copper Clad Aluminum
<b>Euroclass CPR</b>	Eca - s2, d2, a3
<b>Complies With</b>	IEC® 60695-2-11 (Glow Wire Test 960 °C);IEC® 61439.1;IEC® 61439.1 Class II;IEC® 60364
<b>Halogen Free Rating</b>	UL® 2885;IEC® 60754-1;IEC® 62821-2

<b>Low Smoke Rating</b>	IEC® 61034-2;ISO 5659-2;UL® 2885
<b>Mechanical Resistance Rating</b>	IK09
<b>Insulation Material</b>	Thermoplastic Elastomer
<b>Connector Finish</b>	Tinned
<b>UV Resistance Rating</b>	UL® 2556;UL® 854
<b>Flammability Rating</b>	UL® 94V-0
<b>Working Temperature</b>	-50 to 115 °C
<b>Insulation Elongation</b>	500 % Min

Catalog Number	Item Name	?T 60 K	Cros s Secti on	Len <sup>g</sup> t h 1(L1)	Le ng <sup>t</sup> h 2(L 2)	Wi dth 1( W1 )	Wi dth 2( W2 )	Hei ght 2(H 2)	Hei ght 1(H 1)	Hol e Siz e(H S)	C	Unit Weigh t	D	B	A	2 Bar Cur rent Coe ffici ent, Non- Sym metri c
FLEXCOND1280L10	508058	1,984 A	1,280 mm <sup>2</sup>	10,000 mm	100 mm	108 mm	100 mm	18 mm	31.1 mm	14 mm	25 mm	56.800 kg	25 mm	50 mm	50 mm	1.48
FLEXCOND1280L2	508050	1,984 A	1,280 mm <sup>2</sup>	2,000 mm	100 mm	108 mm	100 mm	18 mm	31.1 mm	14 mm	25 mm	11.400 kg	25 mm	50 mm	50 mm	1.48
FLEXCOND1280L3	508051	1,984 A	1,280 mm <sup>2</sup>	3,000 mm	100 mm	108 mm	100 mm	18 mm	31.1 mm	14 mm	25 mm	17 kg	25 mm	50 mm	50 mm	1.48
FLEXCOND1280L4	508052	1,984 A	1,280 mm <sup>2</sup>	4,000 mm	100 mm	108 mm	100 mm	18 mm	31.1 mm	14 mm	25 mm	22.700 kg	25 mm	50 mm	50 mm	1.48
FLEXCOND1280L5	508053	1,984 A	1,280 mm <sup>2</sup>	5,000 mm	100 mm	108 mm	100 mm	18 mm	31.1 mm	14 mm	25 mm	28.400 kg	25 mm	50 mm	50 mm	1.48
FLEXCOND1280L6	508054	1,984 A	1,280 mm <sup>2</sup>	6,000 mm	100 mm	108 mm	100 mm	18 mm	31.1 mm	14 mm	25 mm	34.100 kg	25 mm	50 mm	50 mm	1.48
FLEXCOND1280L7	508055	1,984 A	1,280 mm <sup>2</sup>	7,000 mm	100 mm	108 mm	100 mm	18 mm	31.1 mm	14 mm	25 mm	39.700 kg	25 mm	50 mm	50 mm	1.48
FLEXCOND1280L8	508056	1,984 A	1,280 mm <sup>2</sup>	8,000 mm	100 mm	108 mm	100 mm	18 mm	31.1 mm	14 mm	25 mm	45.400 kg	25 mm	50 mm	50 mm	1.48
FLEXCOND1280L9	508057	1,984 A	1,280 mm <sup>2</sup>	9,000 mm	100 mm	108 mm	100 mm	18 mm	31.1 mm	14 mm	25 mm	51.100 kg	25 mm	50 mm	50 mm	1.48
FLEXCOND1810L10	508068	2,356 A	1,810 mm <sup>2</sup>	10,000 mm	100 mm	108 mm	110 mm	25 mm	39.6 mm	14 mm	25 mm	77.400 kg	30 mm	50 mm	50 mm	1.48
FLEXCOND1810L2	508060	2,356 A	1,810 mm <sup>2</sup>	2,000 mm	100 mm	108 mm	110 mm	25 mm	39.6 mm	14 mm	25 mm	15.500 kg	30 mm	50 mm	50 mm	1.48
FLEXCOND1810L3	508061	2,356 A	1,810 mm <sup>2</sup>	3,000 mm	100 mm	108 mm	110 mm	25 mm	39.6 mm	14 mm	25 mm	23.200 kg	30 mm	50 mm	50 mm	1.48
FLEXCOND1810L4	508062	2,356 A	1,810 mm <sup>2</sup>	4,000 mm	100 mm	108 mm	110 mm	25 mm	39.6 mm	14 mm	25 mm	31 kg	30 mm	50 mm	50 mm	1.48
FLEXCOND1810L5	508063	2,356 A	1,810 mm <sup>2</sup>	5,000 mm	100 mm	108 mm	110 mm	25 mm	39.6 mm	14 mm	25 mm	38.700 kg	30 mm	50 mm	50 mm	1.48
FLEXCOND1810L6	508064	2,356 A	1,810 mm <sup>2</sup>	6,000 mm	100 mm	108 mm	110 mm	25 mm	39.6 mm	14 mm	25 mm	46.400 kg	30 mm	50 mm	50 mm	1.48
FLEXCOND1810L7	508065	2,356 A	1,810 mm <sup>2</sup>	7,000 mm	100 mm	108 mm	110 mm	25 mm	39.6 mm	14 mm	25 mm	54.200 kg	30 mm	50 mm	50 mm	1.48

Catalog Number	Item Name	?T 60 K	Cross Section	Length 1(L1)	Length 2(L2)	Width 1(W1)	Width 2(W2)	Height 2(H2)	Height 1(H1)	Hole Size(HS)	C	Unit Weight	D	B	A	2 Bar Current Coefficient, Non-Symmetric
FLEXCOND1810L8	508066	2,356 A	1,810 mm <sup>2</sup>	8,000 mm	100 mm	108 mm	110 mm	25 mm	39.6 mm	14 mm	25 mm	61.900 kg	30 mm	50 mm	50 mm	1.48
FLEXCOND1810L9	508067	2,356 A	1,810 mm <sup>2</sup>	9,000 mm	100 mm	108 mm	110 mm	25 mm	39.6 mm	14 mm	25 mm	69.700 kg	30 mm	50 mm	50 mm	1.48
FLEXCOND220L10	508008	666 A	220 mm <sup>2</sup>	10,000 mm	50 mm	58 mm	50 mm	9 mm	16.1 mm	11 mm	25 mm	12.700 kg	12.5 mm		25 mm	1.56
FLEXCOND220L2	508000	666 A	220 mm <sup>2</sup>	2,000 mm	50 mm	58 mm	50 mm	9 mm	16.1 mm	11 mm	25 mm	2.500 kg	12.5 mm		25 mm	1.56
FLEXCOND220L3	508001	666 A	220 mm <sup>2</sup>	3,000 mm	50 mm	58 mm	50 mm	9 mm	16.1 mm	11 mm	25 mm	3.800 kg	12.5 mm		25 mm	1.56
FLEXCOND220L4	508002	666 A	220 mm <sup>2</sup>	4,000 mm	50 mm	58 mm	50 mm	9 mm	16.1 mm	11 mm	25 mm	5.100 kg	12.5 mm		25 mm	1.56
FLEXCOND220L5	508003	666 A	220 mm <sup>2</sup>	5,000 mm	50 mm	58 mm	50 mm	9 mm	16.1 mm	11 mm	25 mm	6.300 kg	12.5 mm		25 mm	1.56
FLEXCOND220L6	508004	666 A	220 mm <sup>2</sup>	6,000 mm	50 mm	58 mm	50 mm	9 mm	16.1 mm	11 mm	25 mm	7.600 kg	12.5 mm		25 mm	1.56
FLEXCOND220L7	508005	666 A	220 mm <sup>2</sup>	7,000 mm	50 mm	58 mm	50 mm	9 mm	16.1 mm	11 mm	25 mm	8.900 kg	12.5 mm		25 mm	1.56
FLEXCOND220L8	508006	666 A	220 mm <sup>2</sup>	8,000 mm	50 mm	58 mm	50 mm	9 mm	16.1 mm	11 mm	25 mm	10.100 kg	12.5 mm		25 mm	1.56
FLEXCOND220L9	508007	666 A	220 mm <sup>2</sup>	9,000 mm	50 mm	58 mm	50 mm	9 mm	16.1 mm	11 mm	25 mm	11.400 kg	12.5 mm		25 mm	1.56
FLEXCOND360L10	508018	901 A	360 mm <sup>2</sup>	10,000 mm	50 mm	58 mm	50 mm	12.3 mm	21.6 mm	11 mm	25 mm	18.400 kg	12.5 mm		25 mm	1.52
FLEXCOND360L2	508010	901 A	360 mm <sup>2</sup>	2,000 mm	50 mm	58 mm	50 mm	12.3 mm	21.6 mm	11 mm	25 mm	3.700 kg	12.5 mm		25 mm	1.52
FLEXCOND360L3	508011	901 A	360 mm <sup>2</sup>	3,000 mm	50 mm	58 mm	50 mm	12.3 mm	21.6 mm	11 mm	25 mm	5.500 kg	12.5 mm		25 mm	1.52
FLEXCOND360L4	508012	901 A	360 mm <sup>2</sup>	4,000 mm	50 mm	58 mm	50 mm	12.3 mm	21.6 mm	11 mm	25 mm	7.300 kg	12.5 mm		25 mm	1.52
FLEXCOND360L5	508013	901 A	360 mm <sup>2</sup>	5,000 mm	50 mm	58 mm	50 mm	12.3 mm	21.6 mm	11 mm	25 mm	9.200 kg	12.5 mm		25 mm	1.52
FLEXCOND360L6	508014	901 A	360 mm <sup>2</sup>	6,000 mm	50 mm	58 mm	50 mm	12.3 mm	21.6 mm	11 mm	25 mm	11 kg	12.5 mm		25 mm	1.52
FLEXCOND360L7	508015	901 A	360 mm <sup>2</sup>	7,000 mm	50 mm	58 mm	50 mm	12.3 mm	21.6 mm	11 mm	25 mm	12.900 kg	12.5 mm		25 mm	1.52
FLEXCOND360L8	508016	901 A	360 mm <sup>2</sup>	8,000 mm	50 mm	58 mm	50 mm	12.3 mm	21.6 mm	11 mm	25 mm	14.700 kg	12.5 mm		25 mm	1.52
FLEXCOND360L9	508017	901 A	360 mm <sup>2</sup>	9,000 mm	50 mm	58 mm	50 mm	12.3 mm	21.6 mm	11 mm	25 mm	16.500 kg	12.5 mm		25 mm	1.52
FLEXCOND545L10	508028	1,127 A	545 mm <sup>2</sup>	10,000 mm	50 mm	58 mm	50 mm	18 mm	31.6 mm	11 mm	25 mm	25.800 kg	12.5 mm		25 mm	1.51

Catalog Number	Item Name	?T 60 K	Cross Section	Length 1(L1)	Length 2(L2)	Width 1(W1)	Width 2(W2)	Height 2(H2)	Height 1(H1)	Hole Size(HS)	C	Unit Weight	D	B	A	2 Bar Current Coefficient, Non-Symmetric
FLEXCOND545L2	508020	1,127 A	545 mm <sup>2</sup>	2,000 mm	50 mm	58 mm	50 mm	18 mm	31.6 mm	11 mm	25 mm	5.200 kg	12.5 mm		25 mm	1.51
FLEXCOND545L3	508021	1,127 A	545 mm <sup>2</sup>	3,000 mm	50 mm	58 mm	50 mm	18 mm	31.6 mm	11 mm	25 mm	7.800 kg	12.5 mm		25 mm	1.51
FLEXCOND545L4	508022	1,127 A	545 mm <sup>2</sup>	4,000 mm	50 mm	58 mm	50 mm	18 mm	31.6 mm	11 mm	25 mm	10.300 kg	12.5 mm		25 mm	1.51
FLEXCOND545L5	508023	1,127 A	545 mm <sup>2</sup>	5,000 mm	50 mm	58 mm	50 mm	18 mm	31.6 mm	11 mm	25 mm	12.900 kg	12.5 mm		25 mm	1.51
FLEXCOND545L6	508024	1,127 A	545 mm <sup>2</sup>	6,000 mm	50 mm	58 mm	50 mm	18 mm	31.6 mm	11 mm	25 mm	15.500 kg	12.5 mm		25 mm	1.51
FLEXCOND545L7	508025	1,127 A	545 mm <sup>2</sup>	7,000 mm	50 mm	58 mm	50 mm	18 mm	31.6 mm	11 mm	25 mm	18.100 kg	12.5 mm		25 mm	1.51
FLEXCOND545L8	508026	1,127 A	545 mm <sup>2</sup>	8,000 mm	50 mm	58 mm	50 mm	18 mm	31.6 mm	11 mm	25 mm	20.700 kg	12.5 mm		25 mm	1.51
FLEXCOND545L9	508027	1,127 A	545 mm <sup>2</sup>	9,000 mm	50 mm	58 mm	50 mm	18 mm	31.6 mm	11 mm	25 mm	23.300 kg	12.5 mm		25 mm	1.51
FLEXCOND640L10	508038	1,233 A	640 mm <sup>2</sup>	10,000 mm	75 mm	58 mm	50 mm	21.3 mm	31.1 mm	11 mm	25 mm	29.500 kg	12.5 mm	25 mm	25 mm	1.51
FLEXCOND640L2	508030	1,233 A	640 mm <sup>2</sup>	2,000 mm	75 mm	58 mm	50 mm	21.3 mm	31.1 mm	11 mm	25 mm	5.900 kg	12.5 mm	25 mm	25 mm	1.51
FLEXCOND640L3	508031	1,233 A	640 mm <sup>2</sup>	3,000 mm	75 mm	58 mm	50 mm	21.3 mm	31.1 mm	11 mm	25 mm	8.800 kg	12.5 mm	25 mm	25 mm	1.51
FLEXCOND640L4	508032	1,233 A	640 mm <sup>2</sup>	4,000 mm	75 mm	58 mm	50 mm	21.3 mm	31.1 mm	11 mm	25 mm	11.800 kg	12.5 mm	25 mm	25 mm	1.51
FLEXCOND640L5	508033	1,233 A	640 mm <sup>2</sup>	5,000 mm	75 mm	58 mm	50 mm	21.3 mm	31.1 mm	11 mm	25 mm	14.700 kg	12.5 mm	25 mm	25 mm	1.51
FLEXCOND640L6	508034	1,233 A	640 mm <sup>2</sup>	6,000 mm	75 mm	58 mm	50 mm	21.3 mm	31.1 mm	11 mm	25 mm	17.700 kg	12.5 mm	25 mm	25 mm	1.51
FLEXCOND640L7	508035	1,233 A	640 mm <sup>2</sup>	7,000 mm	75 mm	58 mm	50 mm	21.3 mm	31.1 mm	11 mm	25 mm	20.600 kg	12.5 mm	25 mm	25 mm	1.51
FLEXCOND640L8	508036	1,233 A	640 mm <sup>2</sup>	8,000 mm	75 mm	58 mm	50 mm	21.3 mm	31.1 mm	11 mm	25 mm	23.600 kg	12.5 mm	25 mm	25 mm	1.51
FLEXCOND640L9	508037	1,233 A	640 mm <sup>2</sup>	9,000 mm	75 mm	58 mm	50 mm	21.3 mm	31.1 mm	11 mm	25 mm	26.500 kg	12.5 mm	25 mm	25 mm	1.51
FLEXCOND960L10	508048	1,761 A	960 mm <sup>2</sup>	10,000 mm	100 mm	108 mm	100 mm	14.8 mm	28.1 mm	14 mm	25 mm	44.500 kg	25 mm	50 mm	50 mm	1.48
FLEXCOND960L2	508040	1,761 A	960 mm <sup>2</sup>	2,000 mm	100 mm	108 mm	100 mm	14.8 mm	28.1 mm	14 mm	25 mm	8.900 kg	25 mm	50 mm	50 mm	1.48
FLEXCOND960L3	508041	1,761 A	960 mm <sup>2</sup>	3,000 mm	100 mm	108 mm	100 mm	14.8 mm	28.1 mm	14 mm	25 mm	13.300 kg	25 mm	50 mm	50 mm	1.48
FLEXCOND960L4	508042	1,761 A	960 mm <sup>2</sup>	4,000 mm	100 mm	108 mm	100 mm	14.8 mm	28.1 mm	14 mm	25 mm	17.800 kg	25 mm	50 mm	50 mm	1.48

Catalog Number	Item Name	?T 60 K	Cross Section	Length 1(L1)	Length 2(L2)	Width 1(W1)	Width 2(W2)	Height 2(H2)	Height 1(H1)	Hole Size(HS)	C	Unit Weight	D	B	A	2 Bar Current Coefficient, Non-Symmetric
FLEXCOND960L5	508043	1,761 A	960 mm <sup>2</sup>	5,000 mm	100 mm	108 mm	100 mm	14.8 mm	28.1 mm	14 mm	25 mm	22.200 kg	25 mm	50 mm	50 mm	1.48
FLEXCOND960L6	508044	1,761 A	960 mm <sup>2</sup>	6,000 mm	100 mm	108 mm	100 mm	14.8 mm	28.1 mm	14 mm	25 mm	26.700 kg	25 mm	50 mm	50 mm	1.48
FLEXCOND960L7	508045	1,761 A	960 mm <sup>2</sup>	7,000 mm	100 mm	108 mm	100 mm	14.8 mm	28.1 mm	14 mm	25 mm	31.100 kg	25 mm	50 mm	50 mm	1.48
FLEXCOND960L8	508046	1,761 A	960 mm <sup>2</sup>	8,000 mm	100 mm	108 mm	100 mm	14.8 mm	28.1 mm	14 mm	25 mm	35.600 kg	25 mm	50 mm	50 mm	1.48
FLEXCOND960L9	508047	1,761 A	960 mm <sup>2</sup>	9,000 mm	100 mm	108 mm	100 mm	14.8 mm	28.1 mm	14 mm	25 mm	40 kg	25 mm	50 mm	50 mm	1.48

### Installation Standard

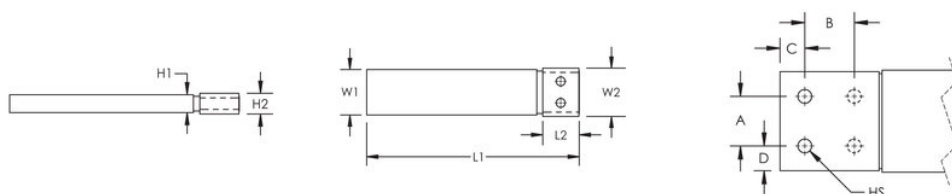
AS 3008;BS 7671;CEI 64-8;CSN;DIN VDE 0100;HD 384;IEC® 60364;NBR 5410;NEN 1010;NFC 15-100;NIBT-NIN;NP (2002);ÖNORM;REBT;RGIE-AREI

## ADDITIONAL PRODUCT DETAILS

nVent ERIFLEX Flexbus Conductor is ready-to-use from one side with direct connection to busbar or circuit-breaker palm. It is an innovative and patented connection solution between two pieces of electrical equipment (such as a transformer, switchboard or generator). Flexbus Advanced maintains a high level of reliability and creates an easy and customizable connection on-site without additional design study, specific specialized workforce or expensive tools. The Flexbus Conductor is insulated with a low-smoke, halogen-free, flame-retardant (LSHFFR), high-temperature and class II material. Flexbus Conductor is a flexible, copper-plated, aluminum flat braid with insulation available from 2 to 10 meters length and under different cross section for 500A to 4500A applications. It allows for connection from the power supply to switchgear with only one conductor per phase up to 1600kVA and with two conductors per phase up to 3150kVA.

Optional extender available for more connection possibilities.

## DIAGRAMS



## WARNING

---

nVent products shall be installed and used only as indicated in nVent's product instruction sheets and training materials. Instruction sheets are available at [www.nvent.com](http://www.nvent.com) and from your nVent customer service representative. Improper installation, misuse, misapplication or other failure to completely follow nVent's instructions and warnings may cause product malfunction, property damage, serious bodily injury and death and/or void your warranty.

### North America

+1.800.753.9221

Option 1 – Customer Care

Option 2 – Technical Support

### Europe

Netherlands:

+31 800-0200135

France:

+33 800 901 793

### Europe

Germany:

800 1890272

Other Countries:

+31 13 5835404

### APAC

Shanghai:

+ 86 21 2412 1618/19

Sydney:

+61 2 9751 8500



Our powerful portfolio of brands:

[nVent.com](http://nVent.com) **CADDY ERICO HOFFMAN RAYCHEM SCHROFF TRACER**

© 2022 nVent. All nVent marks and logos are owned or licensed by nVent Services GmbH or its affiliates. All other trademarks are the property of their respective owners.

nVent reserves the right to change specifications without notice.