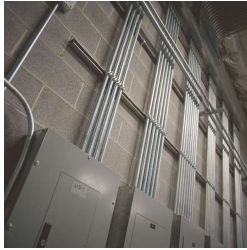
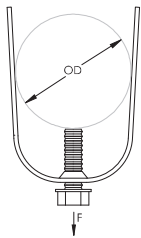


SCH1 Single Piece Strut Clamp for Conduit – SCH8



- One-piece conduit clamp
- No screws or bolts to drop
- Requires only a screwdriver or nutdriver for installation
- Fits into open side of strut channel



Part Number	SCH8
Material	Steel
Finish	Electrogalvanized
Outer Diameter (OD)	0.34" – 0.71"
EMT Conduit Size	1/2"
Static Load (F)	200 lb
Certifications	cULus
Standard Packaging Quantity	100 pc
UPC	78285625208

UL, UR, cUL, cUR, cULus and cURus are registered certification marks of UL LLC.

WARNING

nVent products shall be installed and used only as indicated in nVent's product instruction sheets and training materials. Instruction sheets are available at www.erico.com and from your nVent customer service representative. Improper installation, misuse, misapplication or other failure to completely follow nVent's instructions and warnings may cause product malfunction, property damage, serious bodily injury and death and/or void your warranty.

© 2021 nVent. All rights reserved.

nVent, nVent CADDY, nVent ERICO, nVent ERIFLEX and nVent LENTON are owned by nVent or its global affiliates.

All other trademarks are the property of their respective owners. nVent reserves the right to change specifications without prior notice.

