



PREFORMED LINE PRODUCTS
The connection you can count on.

BIRD PERCH Deterrent



COMMUNICATIONS



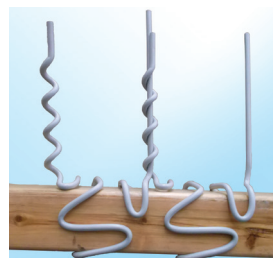
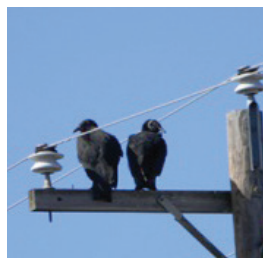
ENERGY



SPECIAL INDUSTRIES



SOLAR





PLP® Distribution Products BIRD PERCH Deterrent

Description

The BIRD PERCH Deterrent is designed to restrict an area on a structure where large birds can perch. In a Distribution Environment, it can prevent electrocution due to incidental avian contact. In a Transmission setting, fouling of key equipment can be stopped. It provides an economical means of reducing line outages while being easily installed.

Manufactured from outdoor grade PVC.

- Excellent chemical and strength properties
- Will not deteriorate in severe weather conditions
- Industrial fumes and salt water won't degrade the properties of rigid PVC

Application

- Installs quickly by hand
- No tools are required
- Self-locking feature built in to securely fit around the structural element.

Features

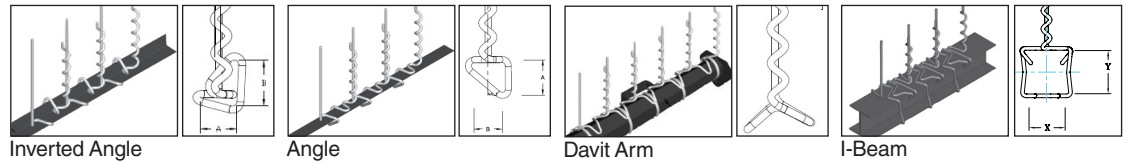
BIRD PERCH Deterrents are designed to:

- Eliminate perching on areas of distribution or transmission structures to stop fouling of equipment or incidental contact electrocution
- Lightweight
- Economical and easily applied
- Long service life without deterioration
- Interlocking design
- 8" (20.3 cm) spacing between uprights
- No metal parts

Flexible Design

Currently available for:

- Angle Iron, Davit Arms, W6 and W10 I-Beams
- Other designs are available upon request. Please provide information about structure, shape and dimensions.



BIRD PERCH Deterrent			
PLP Catalog Number	Description	Crossarm Dimensions w x h Inches (cm)	Carton Qty
BPD-XARM	BIRD PERCH Deterrent Crossarm	3.25"w x 4.25"h (8.3 x 10.8 cm)	16
BPD-A22	BIRD PERCH Deterrent Angle	2"w x 2"h (5.0 x 5.0 cm)	24
BPD-IA22	BIRD PERCH Deterrent Inverted Angle	2"w x 2"h (5.0 x 5.0 cm)	24
BPD-A25	BIRD PERCH Deterrent Angle	2.5"w x 2.5"h (6.3 x 6.3 cm)	24
BPD-IA25	BIRD PERCH Deterrent Inverted Angle	2.5"w x 2.5"h (6.3 x 6.3 cm)	24
BPD-A225	BIRD PERCH Deterrent Angle	2"w x 2.5"h (5.0 x 6.3 cm)	24
BPD-IA225	BIRD PERCH Deterrent Inverted Angle	2"w x 2.5"h (5.0 x 6.3 cm)	24
BPD-W6I	BIRD PERCH Deterrent I-Beam	6"w x 6"h (15.2 x 15.2 cm)	16
BPD-W10I	BIRD PERCH Deterrent I-Beam	10"w x 10"h (25.4 x 25.4 cm)	16
BPD-HD64	BIRD PERCH Deterrent Heavy Duty Crossarm	6"w x 4"h (15.2 x 10.2 cm)	16
BPD-HD55	BIRD PERCH Deterrent Heavy Duty Crossarm	5"w x 5"h (12.7 x 12.7 cm)	16
BPD-DAVIT	BIRD PERCH Deterrent Davit Arm	Universal	24
BPD-HD3585	BIRD PERCH Deterrent Heavy Duty Crossarm	3-1/2"w x 8-1/2"h (8.8 x 8.8 cm)	16
BPD-HD5777	BIRD PERCH Deterrent Heavy Duty Crossarm	5-3/4"w x 7-3/4"h (14.6 x 14.6 cm)	16



World Headquarters
660 Beta Drive
Cleveland, Ohio 44143

Mailing Address:
P.O. Box 91129
Cleveland, Ohio 44101

Telephone: 440.461.5200
Fax: 440.442.8816
Web Site: www.preformed.com
E-mail: inquiries@preformed.com

© 2016 Preformed Line Products
Printed in U.S.A.
EN-SS-1121-4
04.16.00



BIRD PERCH Deterrents should not be used if nesting of large birds is prevalent.