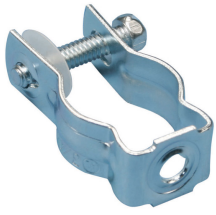
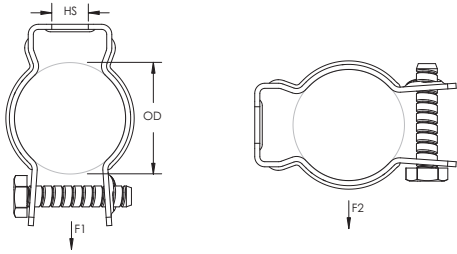


# Bolt Close Conduit/Pipe Clamp – CD2B



- Retained bolt and built-in nut means there are less parts to handle or drop
- Combo head bolt works with slotted, hex, #3 phillips or #2 robertson drivers



Part Number	CD2B
Material	Steel
Finish	Electrogalvanized
Nut Type	Built-In Nut
Outer Diameter (OD)	1.000" – 1.315"
EMT Conduit Size	1"
Rigid Conduit/Pipe Size	1"
Hole Size (HS)	1/4"
Static Load 1 (F1)	200 lb
Static Load 2 (F2)	50 lb
Certifications	cULus
Standard Packaging Quantity	100 pc
UPC	78285612002
EAN-13	8711893811544

UL, UR, cUL, cUR, cULus and cURus are registered certification marks of UL LLC.

#### WARNING

nVent products shall be installed and used only as indicated in nVent's product instruction sheets and training materials. Instruction sheets are available at [www.erico.com](http://www.erico.com) and from your nVent customer service representative. Improper installation, misuse, misapplication or other failure to completely follow nVent's instructions and warnings may cause product malfunction, property damage, serious bodily injury and death and/or void your warranty.

© 2019 nVent All rights reserved

nVent, nVent CADDY, nVent ERICO, nVent ERIFLEX and nVent LENTON are owned by nVent or its global affiliates.

All other trademarks are the property of their respective owners. nVent reserves the right to change specifications without prior notice.

