



**CONNECT AND PROTECT**

# Grounding, Bonding and nVent ERICO Cadweld

Solutions Guide

  
**nvent**

**ERICO**

# SUPERIOR SOLUTIONS

Over 100 years of industry experience

Global support network

Comprehensive design and engineering services

Complete range of electrical protection solutions



## nVent ERICO

### **CUSTOMIZED SOLUTIONS FOR THE MODERN WORLD**

Since 1903, nVent ERICO has been a leading designer, manufacturer and marketer of precision-engineered solutions serving global niche product markets in a diverse range of telecom, commercial construction, utility and rail applications.

As a trusted industry leader, our products and services are recognized for providing labor and cost-saving solutions for customers throughout the world, while also providing the unparalleled service our customers have come to expect.

**Visit [nVent.com/ERICO](http://nVent.com/ERICO) for up-to-date product information available in many languages and the ability to filter product searches with one click.**



# Directory

## SOLUTION RESOURCES

Facility Electrical Protection for the 21st Century .....	5
Earthing Principles .....	7

## GROUND ROD AND ACCESSORIES

Ground Rods   Copper-Bonded Ground Rods .....	16
Ground Rods   Solid Copper Ground Rods .....	22
Ground Rods   Chemical Ground Electrodes .....	23
Ground Rod Connectors   Ground Rod to Conductor .....	25

## CONNECTORS AND POSITIONERS

Grounding Busbar Connectors .....	32
Structural Connectors   Bonding Plates .....	32
Structural Connectors   Beam/Flange Bonding Clamps .....	33
Structural Connectors .....	34
Conductor to Conductor Connectors   Round to Round Connectors .....	35
Pipe, Fence and Gate Connectors   Pipe Connectors .....	40
Rebar Connectors .....	44
Pedestal Connectors .....	46
Lugs   Mechanical Lugs .....	47

## CONDUCTORS

Cu-Bond Composite Cable .....	50
Insulated Round Conductors .....	56
Non-Insulated Round Conductors .....	56
Tape .....	57

## GROUNDING AND BONDING

nVent ERICO GEM Ground Enhancement Material .....	60
nVent ERICO Quickfill No-Mix Ground Enhancing Backfill – QF25 .....	62
Inspection Housings .....	63

Ground Mats and Mesh .....66

Ground Plates .....67

Ground Points for Concrete .....68

Aircraft and Static Grounding .....70

**GROUNDING BUSBARS**

Grounding Busbars and Supports .....74

Intersystem Bonding Termination Bar .....82

**GROUNDING TOOLS**

Ground Rod Driving Tools .....84

Ground Resistance Testers .....86

**NVENT ERICO CADWELD MOLDS**

Grounding Connection Specifications .....92

Cable to Cable Molds .....99

Cable to Ground Rod Splice Molds .....105

Cable to Ground Rod or Other Rounds .....106

Cable to Steel Molds .....108

Cable to Lug or Busbar Molds .....112

Busbar to Busbar Molds .....115

**NVENT ERICO CADWELD WELDING MATERIAL, TOOLS AND ACCESSORIES**

Welding Material .....122

nVent ERICO Cadweld One Shot .....124

nVent ERICO Cadweld Multi .....128

Lugs .....132

Tools and Accessories .....134

**TECHNICAL CHARTS** .....149

**INDEX** .....153

1 HOLE LUG

FEATURE

- Provides an efficient bolting surface for grounding and power applications
- Electrolytic grade copper
- For use with nVent ERICO Cadweld type LA connections only



Material: Copper  
Finish: Tinned  
Type: Non-NEMA®

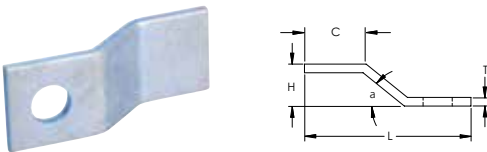
Part Number	Article Number	Length	Width	Thickness	A	Hole Size	Equivalent Conductor Size
KA102	183010	49.987 mm	24.994 mm	2.01 mm	12 mm	8.50 mm	50 mm <sup>2</sup>
KA103	183020	49.987 mm	24.994 mm	3.00 mm	12 mm	8.50 mm	75 mm <sup>2</sup>
KA115	183140	94.996 mm	49.987 mm	5.99 mm	25 mm	10.49 mm	300 mm <sup>2</sup>

For sizes not listed, contact us.

1 HOLE OFFSET LUG

FEATURE

- Provides an efficient bolting surface for grounding and power applications
- Electrolytic grade copper
- For use with nVent ERICO Cadweld type LA connections only



Part Number	Article Number	H	L	W	T	A	B	C	HS	a
Material: Copper – Finish: TinnedType – NEMA®:										
B101CEOL	–	15.88	63.500	25.400	3.18	12.7	25.4	22.2	11.11	45
B101DEOL	–	17.53	68.326	25.400	4.76	14.3	28.6	22.2	14.29	45
B101EEOL	–	19.05	76.200	25.400	6.35	15.9	32.5	26.9	14.29	45
Material: Copper – Finish: TinnedType – Non-NEMA®:										
B305TC	–	20.00	91.400	30.000	5.00	15.0	33.8	39.9	17.00	45
KOF103	183200	13.00	54.999	24.994	3.00	10.0	20.0	25.0	8.50	45
Material: Stainless Steel 304 (EN 1.4301) – Type: Non-NEMA®										
B305SS	–	20.07	91.440	29.972	5.08	15.0	33.8	39.9	17.00	45

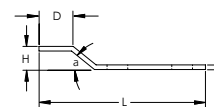
For sizes not listed, contact us.



## 2 HOLE OFFSET LUG

### FEATURE

- Provides an efficient bolting surface for grounding and power applications
- Electrolytic grade copper
- For use with nVent ERICO Cadweld type LA connections only



Material: Copper  
Finish: Tinned  
Type: NEMA®

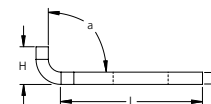
Part Number	H	L	W	T	A	B	C	D	HS
B102CEOL	15.88	114.300	25.400	3.18	15.9	44.5	76.2	22.2	14.29
B102EEOL	19.05	120.650	25.400	6.35	15.9	44.5	76.2	26.9	14.29

For sizes not listed, contact us.

## 1 HOLE LUG, GL STYLE

### FEATURE

- Provides an efficient bolting surface for grounding and power applications
- Electrolytic grade copper
- For use with nVent ERICO Cadweld type GL connections only



Material: Copper  
Finish: Tinned  
Type: NEMA®

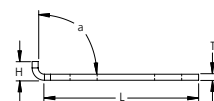
Part Number	Article Number	Height	Length	Width	Thickness	A	Hole Size	Angle	Equivalent Conductor Size
B121CE	183650	11.18 mm	36.576 mm	25.400 mm	3.18 mm	15.9 mm	14.29 mm	90°	81 mm <sup>2</sup>
B121DE	—	11.18 mm	37.338 mm	25.400 mm	4.76 mm	15.9 mm	14.29 mm	105°	121 mm <sup>2</sup>

For sizes not listed, contact us.

## 2 HOLE LUG, GL STYLE

### FEATURE

- Provides an efficient bolting surface for grounding and power applications
- Electrolytic grade copper
- For use with nVent ERICO Cadweld type GL connections only



Material: Copper  
Finish: Tinned  
Type: NEMA®

Part Number	Article Number	H	L	W	T	A	B	HS	a	Equivalent Conductor Size
B122CE	183660	11.18	81.026	25.400	3.18	15.9	44.5	14.29	90	81
B122DE	—	11.18	82.550	25.400	4.76	15.9	44.5	14.29	90	121

For sizes not listed, contact us.

Our powerful portfolio of brands:

**CADDY   ERICO   HOFFMAN   RAYCHEM   SCHROFF   TRACER**



**[nVent.com/ERICO](https://nVent.com/ERICO)**

nVent products shall be installed and used only as indicated in nVent's product instruction sheets and training materials. Instruction sheets are available at [nVent.com/ERICO](https://nVent.com/ERICO) and from your nVent customer service representative. Improper installation, misuse, misapplication or other failures to completely follow nVent's Instructions and warnings may cause product malfunction, property damage, serious bodily injury and death and/or void your warranty.

©2020 nVent. All nVent marks and logos are owned or licensed by nVent Services GmbH or its affiliates. All other trademarks are the property of their respective owners. nVent reserves the right to change specifications without notice.

ERICO-CAT-E1339C-GroundingBondingCadweld-UKEN-2004