

INSTALLER AND USER INSTRUCTIONS

INSTALLATIONS-UND BEDIENUNGSANLEITUNG

MANUEL INSTALLATEUR ET UTILISATEUR

MANUALE DI INSTALLAZIONE ED USO

MANUAL PARA INSTALADOR Y USUARIO

ΕΓΧΕΙΡΙΔΙΟ ΕΓΚΑΤΑΣΤΑΣΗΣ ΚΑΙ ΧΡΗΣΗΣ

TELEPÍTÉSI ÉS KEZELÉSI UTASÍTÁSOK

INSTRUKCJA MONTAŻU I OBSŁUGI

INSTALLERINGS- OG BRUGERVEJLEDNING

INSTRUCTIES VOOR DE INSTALLATEUR EN DE GEBRUIKER

ИНСТРУКЦИЯ ПО УСТАНОВКЕ И ЭКСПЛУАТАЦИИ

INSTALLASJONS- OG BRUKERVEILEDNING

NÁVOD NA INSTALACI A POUŽITÍ

ASENTAJAN JA KÄYTTÄJÄN OHJEET

ІНСТРУКЦІЯ З МОНТАЖУ ТА ЕКСПЛУАТАЦІЇ

NÁVOD NA INŠTALÁCIU A POUŽITIE

INSTALLATIONS- OCH ANVÄNDARINSTRUKTIONER

INSTRUCȚIUNI DE INSTALARE ȘI UTILIZARE

KORISNIČKI PRIRUČNIK S UPUTAMA ZA POSTAVLJANJE

KURUCU VE KULLANICI TALİMATLARI

NAVODILA ZA MONTAŽO IN UPORABO

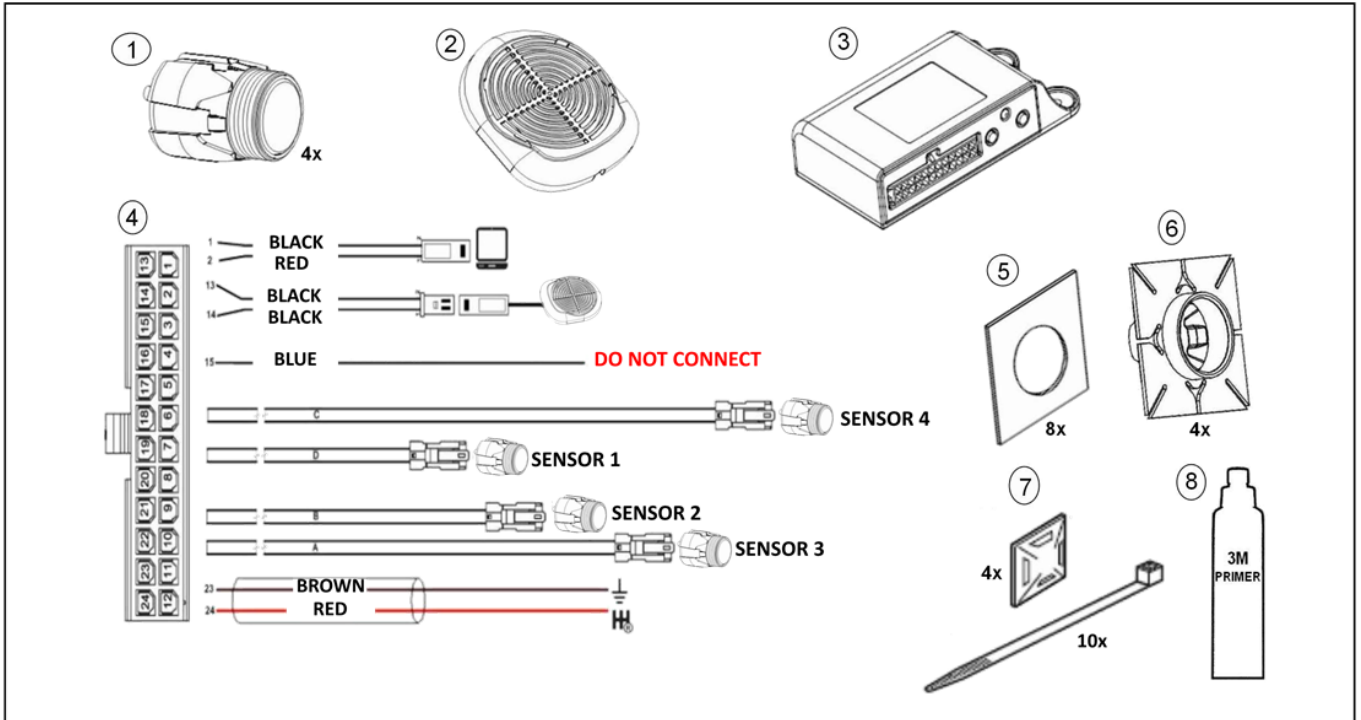
INSTRUÇÕES PARA O INSTALADOR E UTILIZADOR

GB	Description:	Reverse parking assist system	Part number:	990E0-54P53-015
	Applications:	<ul style="list-style-type: none"> ▪ SX4 (JY) ▪ VITARA (LY) TSMLY...100001 - ...600000 ▪ VITARA (LY) TSMLY...600001 - ... LHD/RHD 	Fitting time:	45-60 min.
DE	Beschreibung:	ParkAssistent hinten	Teile Nr:	990E0-54P53-015
	Verwendung:	<ul style="list-style-type: none"> ▪ SX4 (JY) ▪ VITARA (LY) TSMLY...100001 - ...600000 ▪ VITARA (LY) TSMLY...600001 - ... LHD/RHD 	Montagezeit:	45-60 min.
FR	Désignation:	Capteur de parking arrière	N° de code:	990E0-54P53-015
	Utilisations:	<ul style="list-style-type: none"> ▪ SX4 (JY) ▪ VITARA (LY) TSMLY...100001 - ...600000 ▪ VITARA (LY) TSMLY...600001 - ... LHD/RHD 	Temps de montage:	45-60 min.
IT	Descrizione:	Sensore di parcheggio posteriore	Numero di codice:	990E0-54P53-015
	Applicazioni:	<ul style="list-style-type: none"> ▪ SX4 (JY) ▪ VITARA (LY) TSMLY...100001 - ...600000 ▪ VITARA (LY) TSMLY...600001 - ... LHD/RHD 	Tempo d'installazione:	45-60 min.
ES	Descripción:	Sensor de parking trasero	Código:	990E0-54P53-015
	Aplicación:	<ul style="list-style-type: none"> ▪ SX4 (JY) ▪ VITARA (LY) TSMLY...100001 - ...600000 ▪ VITARA (LY) TSMLY...600001 - ... LHD/RHD 	Tiempo de instalación:	45-60 min.

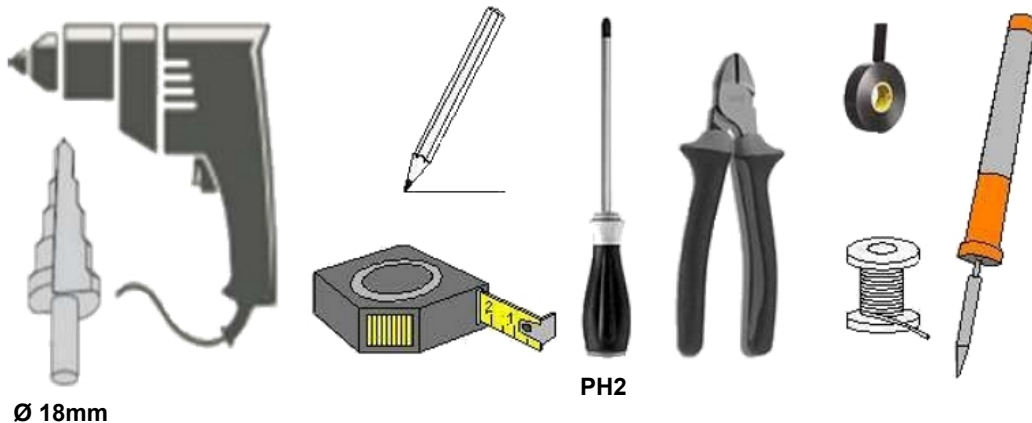
GR	Περιγραφή:	Αισθητήρας οπίσθιου παρκαρίσματος	αρ. κωδικού:	990E0-54P53-015
	Εφαρμογές:	<ul style="list-style-type: none"> ▪ SX4 (JY) ▪ VITARA (LY) TSMLY...100001 - ...600000 ▪ VITARA (LY) TSMLY...600001 - ... LHD/RHD 	Χρόνος εγκατάστασης:	45-60 λεπτά
HU	Leírás:	Tolató radar	Cikkszám:	990E0-54P53-015
	Alkalmazások:	<ul style="list-style-type: none"> ▪ SX4 (JY) ▪ VITARA (LY) TSMLY...100001 - ...600000 ▪ VITARA (LY) TSMLY...600001 - ... LHD/RHD 	Összeszerelési idő:	45-60 perc
PL	Opis:	System wspomagania parkowania tyłem	Numer części:	990E0-54P53-015
	Zastosowanie:	<ul style="list-style-type: none"> ▪ SX4 (JY) ▪ VITARA (LY) TSMLY...100001 - ...600000 ▪ VITARA (LY) TSMLY...600001 - ... LHD/RHD 	Czas montażu:	45-60 min.
DK	Beskrivelse:	Parkeringsystem med bakkesensorer	Reservedelnummer:	990E0-54P53-015
	Anvendelsesområder:	<ul style="list-style-type: none"> ▪ SX4 (JY) ▪ VITARA (LY) TSMLY...100001 - ...600000 ▪ VITARA (LY) TSMLY...600001 - ... LHD/RHD 	Montagetid:	45-60 min.
NL	Beschrijving:	Parkeersysteem	Onderdeelnummer:	990E0-54P53-015
	Toepassingen:	<ul style="list-style-type: none"> ▪ SX4 (JY) ▪ VITARA (LY) TSMLY...100001 - ...600000 ▪ VITARA (LY) TSMLY...600001 - ... LHD/RHD 	Montagetijd:	45-60 min.
RU	Описание:	Система парковки задним ходом	Номер детали:	990E0-54P53-015
	Применяется:	<ul style="list-style-type: none"> ▪ SX4 (JY) ▪ VITARA (LY) TSMLY...100001 - ...600000 ▪ VITARA (LY) TSMLY...600001 - ... LHD/RHD 	Время настройки:	45-60 мин.
NO	Beskrivelse:	Revers parkeringssystem	Delenr.:	990E0-54P53-015
	Anvendelser:	<ul style="list-style-type: none"> ▪ SX4 (JY) ▪ VITARA (LY) TSMLY...100001 - ...600000 ▪ VITARA (LY) TSMLY...600001 - ... LHD/RHD 	Monteringstid:	45-60 min.
CZ	Popis:	Reverzní parkovací systém	Číslo dílu:	990E0-54P53-015
	Použití:	<ul style="list-style-type: none"> ▪ SX4 (JY) ▪ VITARA (LY) TSMLY...100001 - ...600000 ▪ VITARA (LY) TSMLY...600001 - ... LHD/RHD 	Doba montáže:	45-60 min.
FI	Kuvaus:	Peruutuspysäköintijärjestelmä	Osanumero:	990E0-54P53-015
	Sovellukset:	<ul style="list-style-type: none"> ▪ SX4 (JY) ▪ VITARA (LY) TSMLY...100001 - ...600000 ▪ VITARA (LY) TSMLY...600001 - ... LHD/RHD 	Asennusaika:	45-60 min.
UA	Опис:	Система заднього паркування	Номер деталі:	990E0-54P53-015
	Застосування:	<ul style="list-style-type: none"> ▪ SX4 (JY) ▪ VITARA (LY) TSMLY...100001 - ...600000 ▪ VITARA (LY) TSMLY...600001 - ... LHD/RHD 	Час монтажу:	45-60 хв.
SK	Popis:	Parkovací asistent	Číslo dielu:	990E0-54P53-015
	Použitie:	<ul style="list-style-type: none"> ▪ SX4 (JY) ▪ VITARA (LY) TSMLY...100001 - ...600000 ▪ VITARA (LY) TSMLY...600001 - ... LHD/RHD 	Doba montáže:	45-60 min.

SE	Beskrivning:	Parkeringsystem med backsensorer	Reservdelsnummer:	990E0-54P53-015
	Användningsområden:	<ul style="list-style-type: none"> ▪ SX4 (JY) ▪ VITARA (LY) TSMLY...100001 - ...600000 ▪ VITARA (LY) TSMLY...600001 - ... LHD/RHD 	Monteringstid:	45-60 min.
RO	Descriere:	Sistem de parcare cu spatele	Cod articol:	990E0-54P53-015
	Aplicații:	<ul style="list-style-type: none"> ▪ SX4 (JY) ▪ VITARA (LY) TSMLY...100001 - ...600000 ▪ VITARA (LY) TSMLY...600001 - ... LHD/RHD 	Timp de montare:	45-60 min.
HR	Opis:	Sustav za pomoć pri parkiranju unatrag	Broj dijela:	990E0-54P53-015
	Namijenjen za:	<ul style="list-style-type: none"> ▪ SX4 (JY) ▪ VITARA (LY) TSMLY...100001 - ...600000 ▪ VITARA (LY) TSMLY...600001 - ... LHD/RHD 	Vrijeme potrebno za postavljanje:	45-60 min.
TR	Tanim:	Geri park sistemi	Parça numarasi:	990E0-54P53-015
	Uygulamalar:	<ul style="list-style-type: none"> ▪ SX4 (JY) ▪ VITARA (LY) TSMLY...100001 - ...600000 ▪ VITARA (LY) TSMLY...600001 - ... LHD/RHD 	Montaj süresi:	45-60 dak.
SL	Opis:	Sistem za vzvratno parkiranje	Številka dela:	990E0-54P53-015
	Aplikacija:	<ul style="list-style-type: none"> ▪ SX4 (JY) ▪ VITARA (LY) TSMLY...100001 - ...600000 ▪ VITARA (LY) TSMLY...600001 - ... LHD/RHD 	Čas za namestitev:	45-60 min.
PT	Descrição:	Sistema de estacionamento traseiro	Número da peça:	990E0-54P53-015
	Aplicações:	<ul style="list-style-type: none"> ▪ SX4 (JY) ▪ VITARA (LY) TSMLY...100001 - ...600000 ▪ VITARA (LY) TSMLY...600001 - ... LHD/RHD 	Tempo de instalação:	45-60 min.

1. SET CONTENTS



2. TOOLS



3. BEFORE INSTALLATION

1. Before you start, park the vehicle on a level surface, pull the parking brake and remove the ignition key from the lock cylinder.
2. Be careful not to damage any vehicle part.
3. Make sure all the parts are included in the kit as shown in the "Set Contents".

CAUTION

Please read the present manual and follow its instructions carefully. To emphasize special information, the signal words **WARNING**, **CAUTION** and **NOTE** are used throughout this manual: pay special attention to them.

WARNING Indicates a potentially hazardous situation which could result in death or injury.

CAUTION Indicates a potentially hazardous situation which could result in vehicle damage.

NOTE Indicates special information to make maintenance easier or instructions clearer.

CAUTION

- Disconnect the negative pole of the battery before connecting any wire.
- All connections must be soldered.
- Installation and connections should only be done by qualified personnel.

- IMPORTANT -
PRINT PAGES 5 & 6 BELOW FOR YOUR CUSTOMER

4. SYSTEM OPERATION

The system is automatically activated when ignition is turned ON and reverse gear is engaged → 2 consecutive Beeps will confirm activation. Detection of obstacles will be signalled by the buzzer.

The audible warning, with a series of beeps, will increase in pitch and frequency as the vehicle moves nearer a stationary object: the faster the beeping the closer the obstacle.

The beeps become a continuous solid tone when the preset minimum safety distance (STOP zone) is reached.

⚠ WARNING

Presence of human beings, animals or small obstacles (lower than 35cm) or objects/materials with low reflectance, might not be detected by the parking system.

⚠ WARNING

- a. **Remember to always look behind the vehicle while parking.**
- b. **If, once reverse gear is engaged and activation confirmed, the buzzer keeps beeping and no obstacle is behind the vehicle, the parking system is defective: contact your Suzuki dealer.**
- c. **During any reverse manoeuvre, remember to always look behind for persons and obstacles. The parking system is designed only as a parking aid, it should not be considered to replace care and attentiveness while manoeuvring. Always check your wing mirrors and rear view mirror while reversing and keep a slow speed to avoid unexpected hazards.**
- d. **In case of heavy rain or snow the parking system might give an audible alert even if no obstacles are present: this does not necessarily indicate that the parking system is defective.**
- e. **In car washes which use steam jet or high-pressure washers, take care to keep the nozzle at least 10 cm away from the sensors.**

5. TROUBLESHOOTING GUIDE

5.1 FAULTY SENSORS

When reverse gear is engaged, the parking sensor system provides an instant, automatic, self-diagnostic function. If all the sensors are operative, 2 Beeps will confirm activation.

If one of the sensors is faulty or disconnected, a deep error tone (Bop) will sound followed by the number of beeps corresponding to the faulty sensor. The cycle will repeat until all faulty sensors have been signalled. 2 Bops will confirm the end the self-test cycle.

The system will exclude any faulty sensor and keep the other ones active. The following is an example of error indications:

Sensor 1 inoperative => 2 activation Beeps + 1 Bop + 1 Beep + 2 closing Bops.

Sensors 1 and 2 inoperative => 2 activation Beeps + 1 Bop + 1 Beep + 1 Bop + 2 Beeps + 2 closing Bops.

5.2 OTHERS

FAULTS	CAUSE / SOLUTION
The system does not work when reverse gear is engaged.	The system is not wired correctly. Check all connections. Check that the arrow and the UP indication are pointing upwards.
A sound signal goes off when there is no obstacle at the rear of the vehicle.	The sensors detect ground. Ensure that they have been installed at the correct height. Use the correction adapters to tilt the sensors upwards.
	Check that there is no excessive paint on the sensor surface. Too much spray paint can impair sensor ability to function properly.
	Sensors are too sensitive. Modify setting.
The buzzer does not sound.	Check the connection between the unit and the buzzer.
Sensors do not correctly detect obstacles.	Back part of sensors is in contact with frame. Create a separation between the sensors and the vehicle chassis (at least 2mm).
	Ice or dirt on sensors. Carefully clean the sensors with a soft cloth. Normal function resumes after cleaning or defrosting.

6. WARRANTY CONDITIONS

This product is guaranteed to be free from manufacturing defects for a period of 24 months from the purchase date validated by the receipt or invoice (in compliance with Warranty Directive 1999/44/EC - Italian Leg. Decree N° 24 dated 02/02/2002). If these documents are not available, warranty will start from manufacturing date stated on and inside the product itself.

Warranty only covers repair or replacement of the parts showing manufacturing defects; direct labour, transport and any other charges are excluded. The warranty does not apply in case of malfunctioning caused by: negligence, improper installation, tampering and improper use of the system and its application is entirely at the manufacturer's discretion. In case of any warranty request please contact your SUZUKI dealer.

The above is the only guarantee prescription and the buyer shall not have the right to ask for cancellation of the contract, compensation for damage and/or price reduction.

7. INSTALLATION

FOLLOW THE VEHICLE-SPECIFIC INSTALLATION INSTRUCTIONS (PAR.12)

7.1 Tow Bar/Rear Spare Tire

When a vehicle has a tow bar or a rear spare tire, the system can be configured to push out the impact detection zone past the accessory. Configuration must be done by an authorized SUZUKI dealer.

CAUTION

OBSTACLES BETWEEN THE BUMPER AND THE NEW STOP ZONE WILL NOT BE DETECTED.

CONNECTION FOR VEHICLES WITH TOW BAR

Refer to installation-instructions of 'SUZUKI-Towbar-Wiring-Kit' for detailed connection information.

8. PROGRAMMING

CAUTION

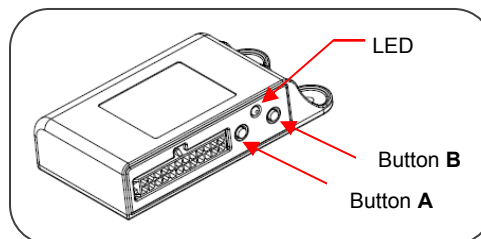
Only expert users should modify these settings to avoid malfunctions of the system.

System configuration is done by pressing buttons "A" and "B" (see figure below):

- Press button "A" to select the parameter to be configured.
- Press button "B" to select the desired setting.

8.1 How to enter in programming mode:

1. Turn ignition ON and engage reverse gear.
2. Simultaneously press buttons "A" and "B".
3. Operation will be confirmed by 1 Beep and 1 Red/Green LED flash.
4. Wait until the LED turns OFF.



8.2 Parameter setup:

1. Within 10 sec. after the LED turns OFF, press button "A" the number of times corresponding to the parameter to customize. 1 Beep and 1 Red LED blink will confirm each button press.
2. Press button "B" the number of times corresponding to the desired setup. 1 Beep and 1 Green LED blink will confirm each button press.

Example: To set maximum detection distance of inner sensors at 125 cm => press button "A" twice and then button "B" 7 times.

8.3 Setup confirmation:

1. The control unit will repeat the number of beeps and blinks corresponding to the selected setup. After a few seconds, if the code has been successfully entered, the buzzer will give off a long beep (Beep, Beep, Beep).
2. If the entry is incorrect, the buzzer will emit a low tone signal (Bop) and the system will automatically exit the procedure.
3. After the confirmation Beeps, other parameters can be configured by following the same procedure.
4. If no button is pressed within approx.10 sec., the system automatically exits programming mode.

8.4 How to restore factory settings:

1. Disconnect the connector from the unit.
2. Turn ignition key ON and engage reverse gear.
3. Simultaneously press and hold buttons "A" and "B" and reconnect the connector.
4. The LED will start blinking Red/Green.
5. When the buzzer gives off a Beep, release buttons "A" and "B".
6. When the LED stops blinking, the system is reset to the original factory settings.

9. SETTING OF PARAMETERS

CAUTION

The system is factory preset, modify settings only if strictly necessary!

PARAMETER	BUTTON 'A'	BUTTON 'B'	SELECTABLE SETTINGS	FACTORY SETTINGS
Sensitivity	1	1	Low	High
		2	Medium	
		3	High	
Buzzer Volume	1	7	Low	High
		8	High	
STOP zone - Inner Sensors	2	1	30 cm	50 cm
		2	40 cm	
		3	50 cm	
Maximum distance - Inner Sensors	2	6	100 cm	180 cm
		7	125 cm	
		8	150 cm	
		9	180 cm	
STOP zone - Corner Sensors	3	1	30 cm	40 cm
		2	40 cm	
		3	50 cm	
Maximum distance - Corner Sensors	3	5	60 cm	80 cm
		6	70 cm	
		7	80 cm	
		8	100 cm	
* Rear Spare Tire or Tow Bar Detection (allows the system to see past the obstruction)	4	1	0	0
		2	10 cm	
		3	20 cm	
		4	30 cm	

* 41 = 0 (OFF)

42 = minimum detection range from bumper, 10cm.

43 = minimum detection range from bumper, 20cm.

44 = minimum detection range from bumper, 30cm.

10. TECHNICAL SPECIFICATIONS

Supply voltage	12 - 24 Vdc
Current consumption - system ON	10mA @ 12V
Operating temperature range	-40°C / +85°C
Ultrasonic frequency	58 KHz

11. WASTE ELECTRICAL AND ELECTRONIC EQUIPMENT (WEEE) DIRECTIVE

The present device does not fall within the scope of Directive 2002/96/EC on Waste Electrical and Electronic Equipment (WEEE) as specified in art. 2.1 of L.D. no. 151 of 25/07/2005.

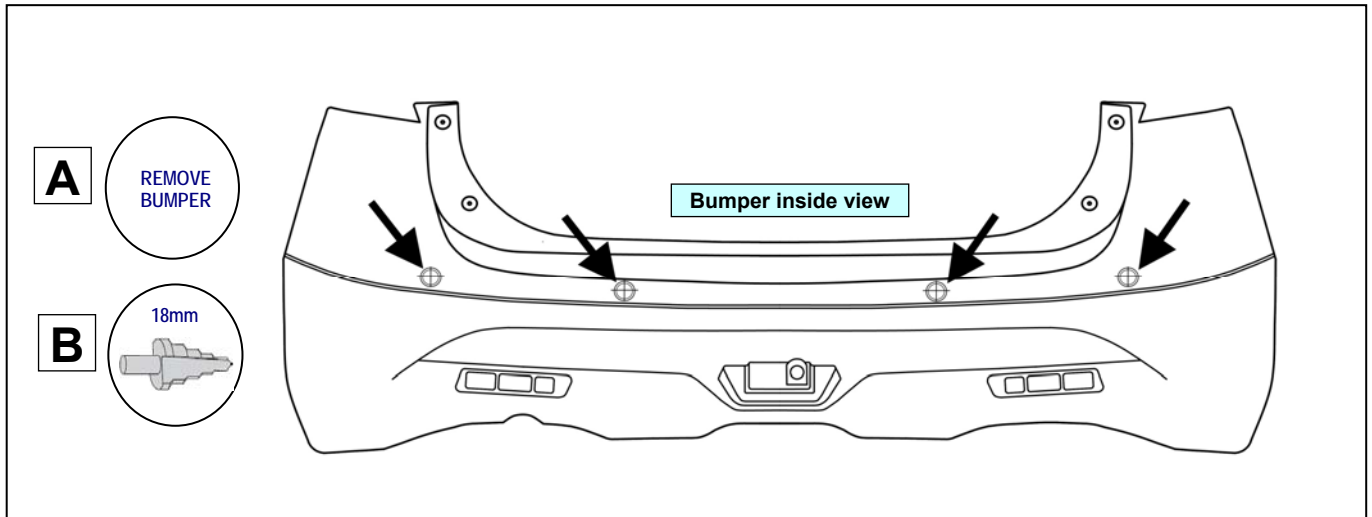
12. INSTALLATION

BE SURE TO FOLLOW THE INSTRUCTIONS RELATIVE TO YOUR VEHICLE MODEL!

CONNECTION FOR VEHICLES WITH TOW BAR

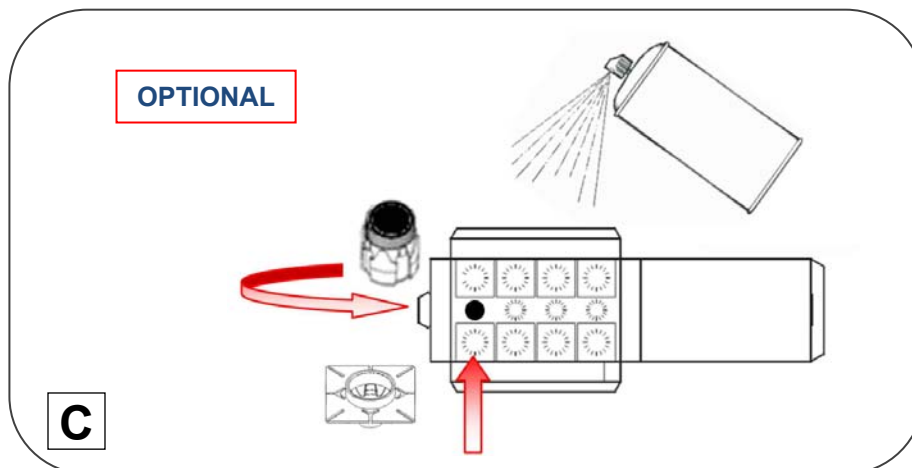
Refer to installation-instructions of 'SUZUKI-Towbar-Wiring-Kit' for detailed connection information.

12.1 INSTALLATION "SX4 (JY)"



CAUTION

Drill through the factory markings on the inside of the bumper using an 18mm drill bit.



Painting recommendations:

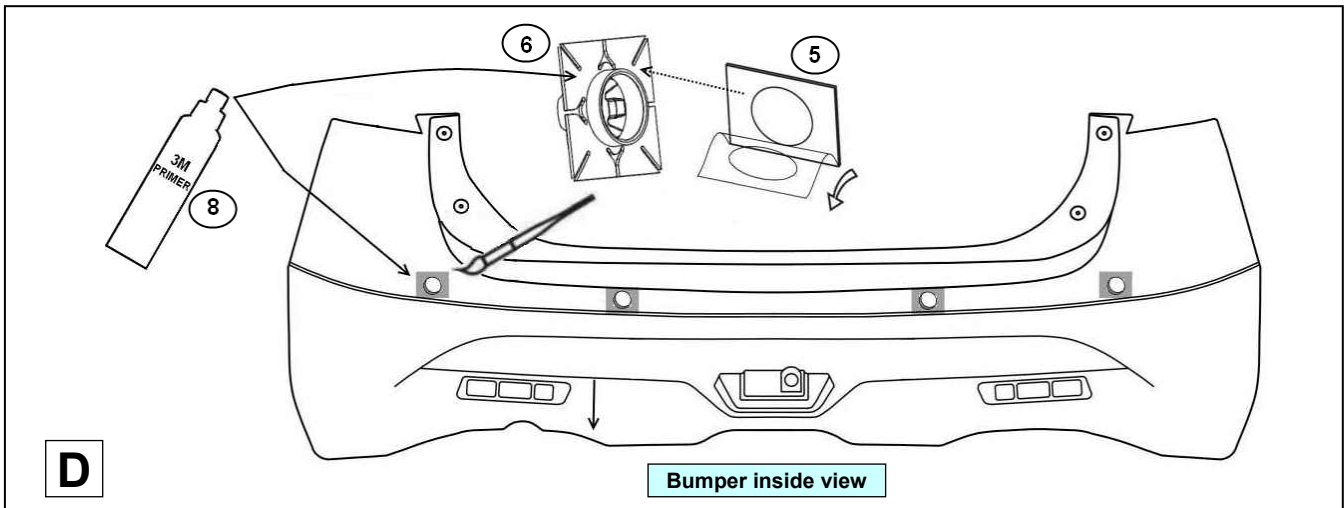
To spray paint proceed as follows:

- Use isopropyl alcohol to clean the sensors and the adapters and let dry. For better adhesion of paint, a proper primer (not supplied) must be applied.
- For a perfect spray-paint finish, we recommend turning down the black silicone seal around the sensor head before inserting the sensor into the slots.
- Fold the cardboard template into a box. Spray paint the sensors and the adapters and let dry thoroughly before assembling.
- No stoving of the paint (maximum 50°C / 122°F).

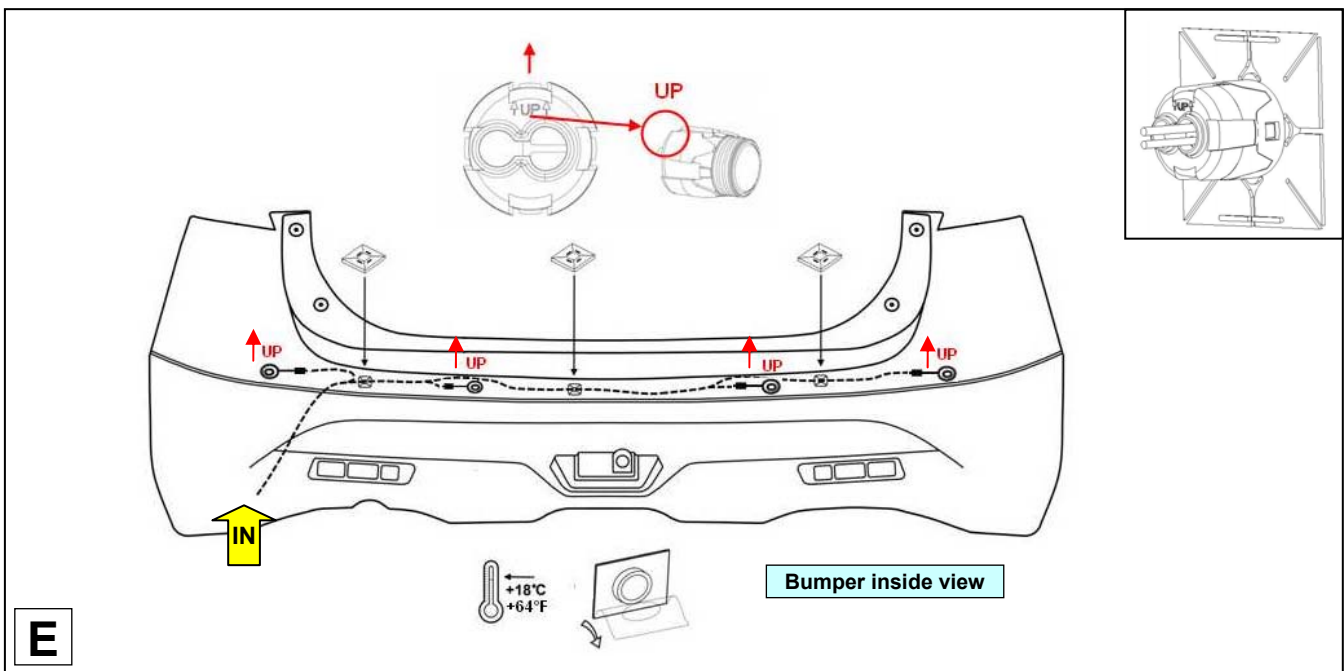
NB: Too much spray paint will affect sensors performance. Maximum thickness of paint: 100 µm.

CAUTION

Clean and degrease plastic brackets (6) and around the holes. Apply primer (8), let dry for at least 1 minute and then proceed as follows.

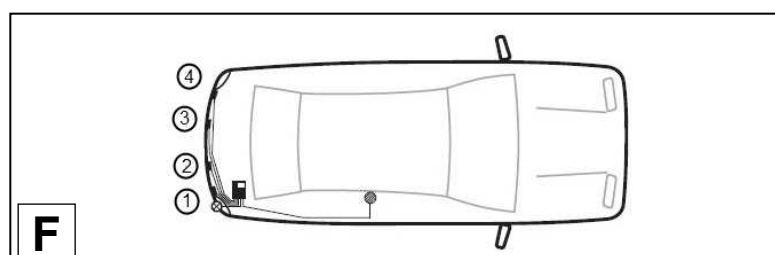
**CAUTION**

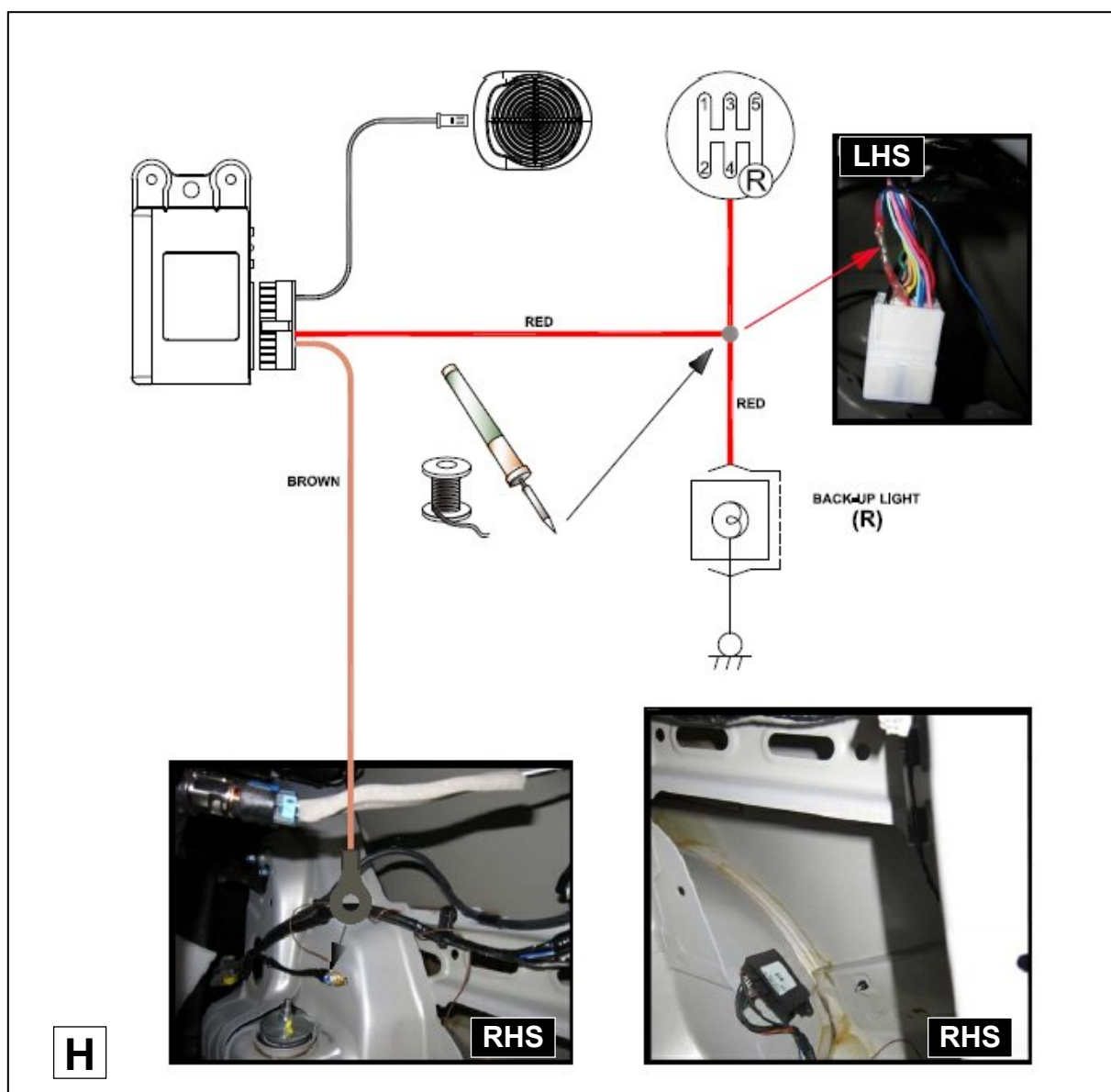
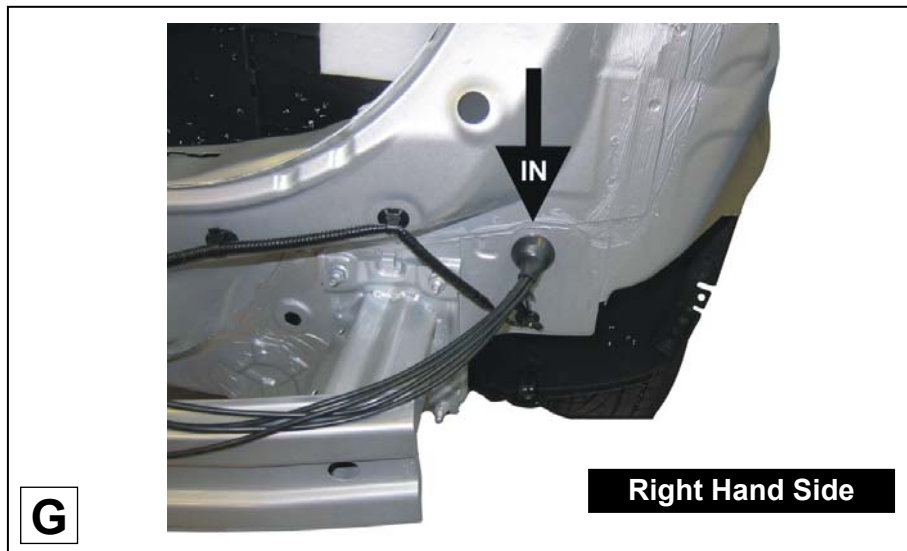
Clip the sensors into the adapters with the arrows and the **UP** indication facing upwards then connect to the wires coming out of the trunk.

**NOTE**

Check length of cables before proceeding with final positioning of accessories.

- Sensor 1: shortest cable
- Sensor 4: longest cable

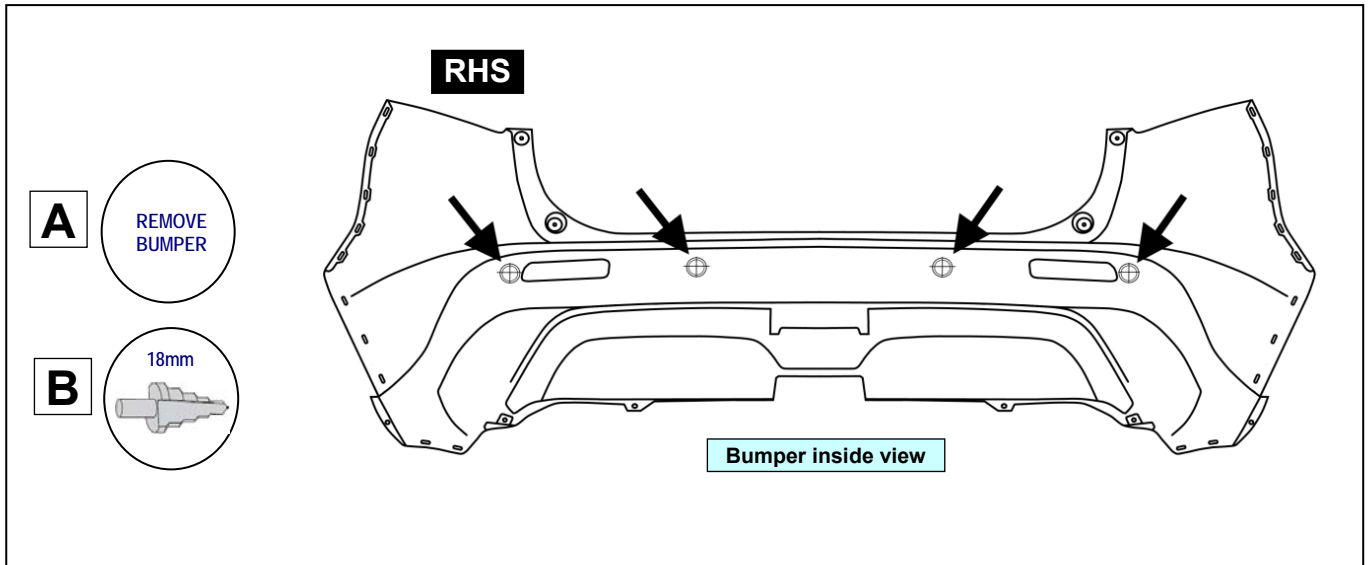




NOTE

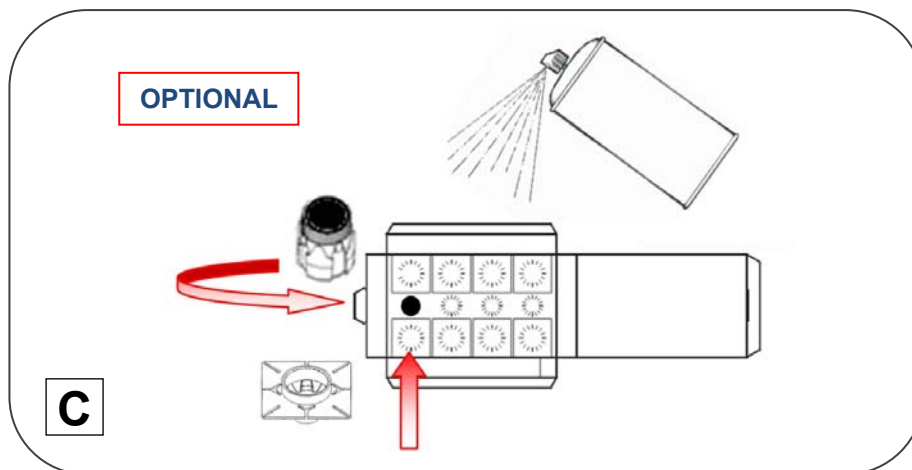
Use the supplied double-faced adhesive tape or screws to install the buzzer where the driver will clearly hear the audible signals.

12.2 INSTALLATION "VITARA (LY) TSMLY...100001 - ...600000"



CAUTION

Drill through the factory markings on the inside of the bumper using an 18mm drill bit.



Painting recommendations:

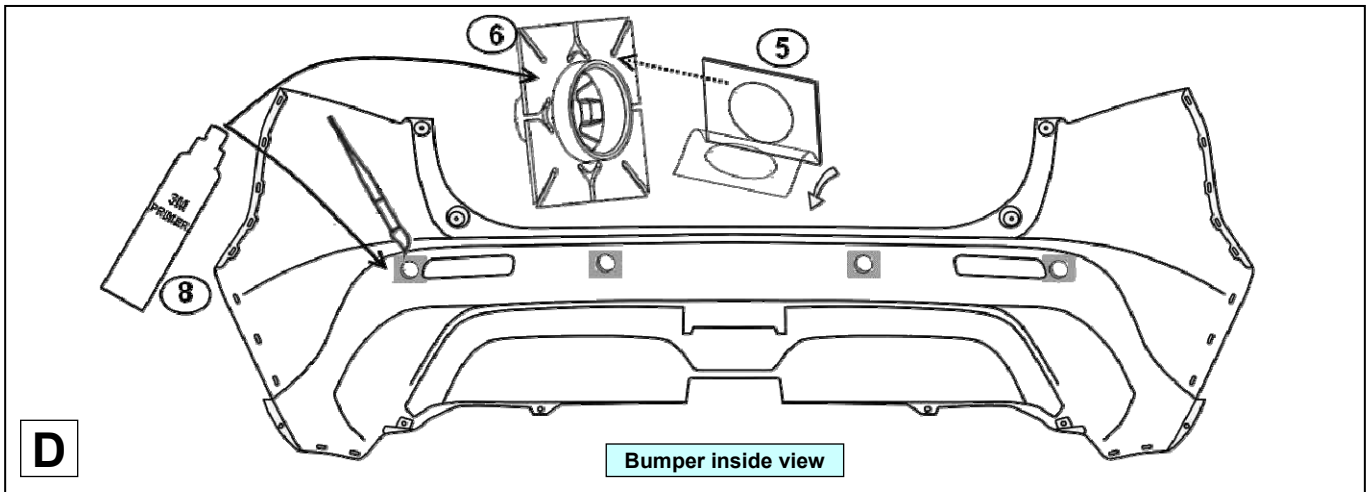
To spray paint proceed as follows:

- Use isopropyl alcohol to clean the sensors and the adapters and let dry. For better adhesion of paint, a proper primer (not supplied) must be applied.
- For a perfect spray-paint finish, we recommend turning down the black silicone seal around the sensor head before inserting the sensor into the slots.
- Fold the cardboard template into a box. Spray paint the sensors and the adapters and let dry thoroughly before assembling.
- No stoving of the paint (maximum 50°C / 122°F).

NB: Too much spray paint will affect sensors performance. Maximum thickness of paint: 100 µm.

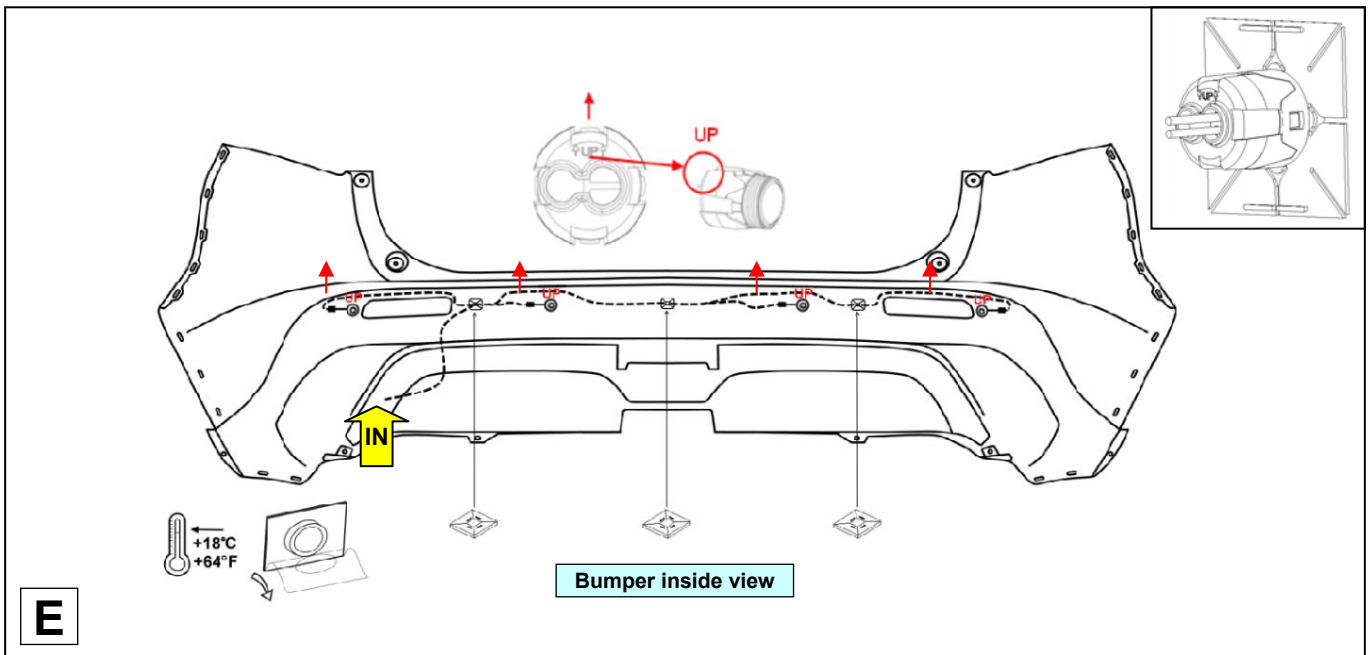
CAUTION

Clean and degrease plastic brackets (6) and around the holes. Apply primer (8), let dry for at least 1 minute and then proceed as follows.



CAUTION

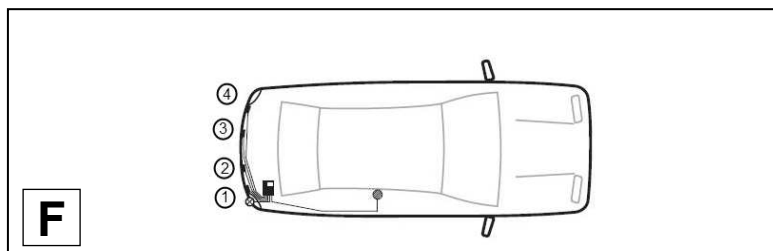
Clip the sensors into the adapters with the arrows and the **UP** indication facing upwards then connect to the wires coming out of the trunk.

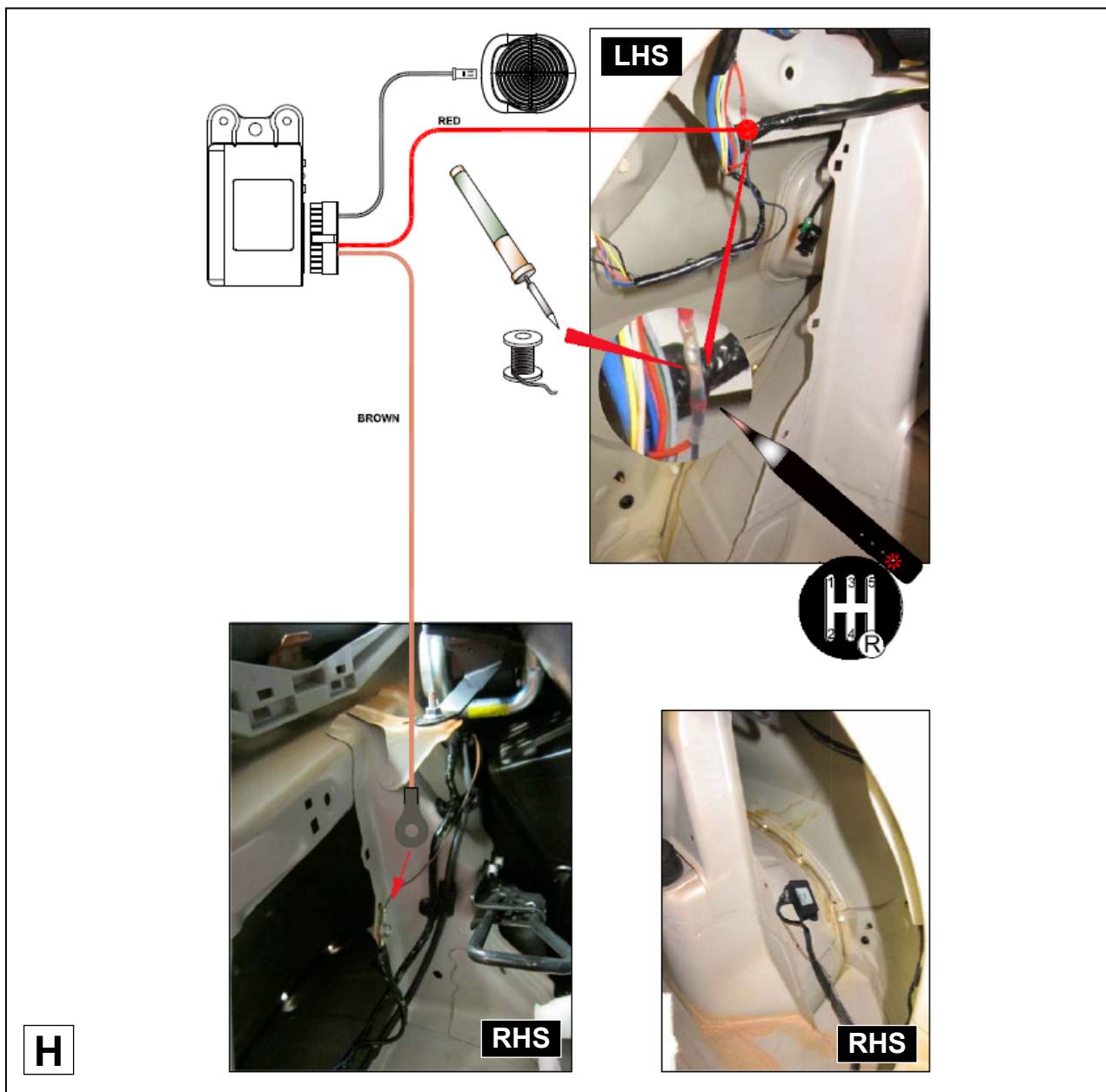
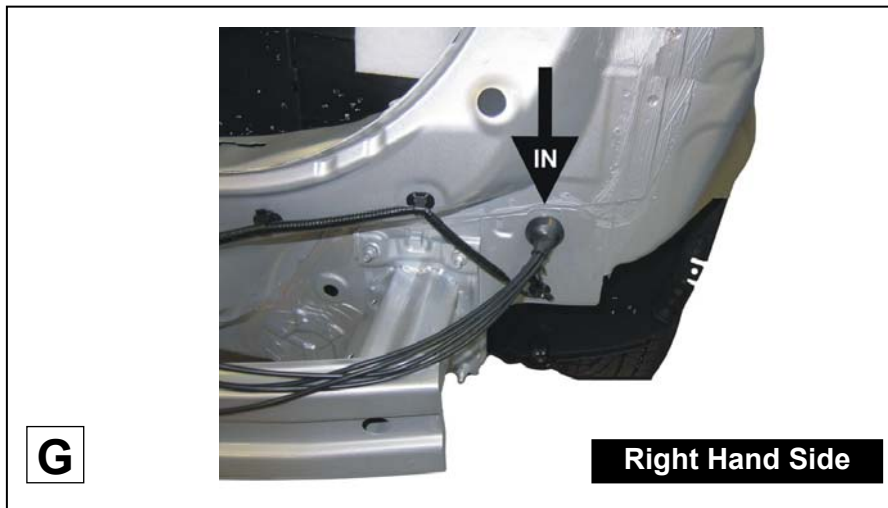


NOTE

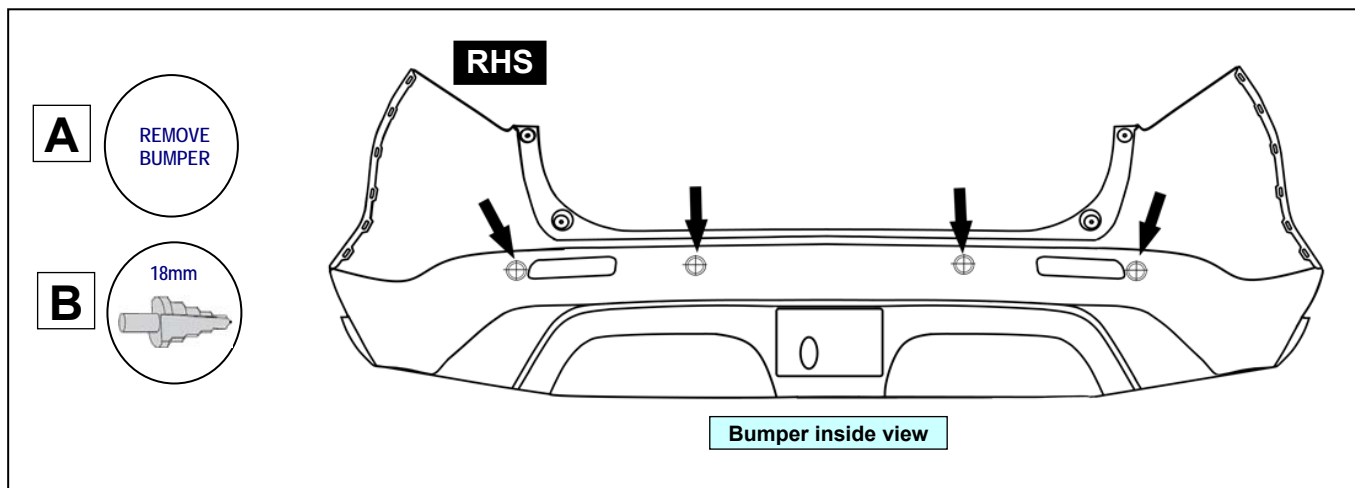
Check length of cables before proceeding with final positioning of accessories.

- Sensor 1: shortest cable
- Sensor 4: longest cable



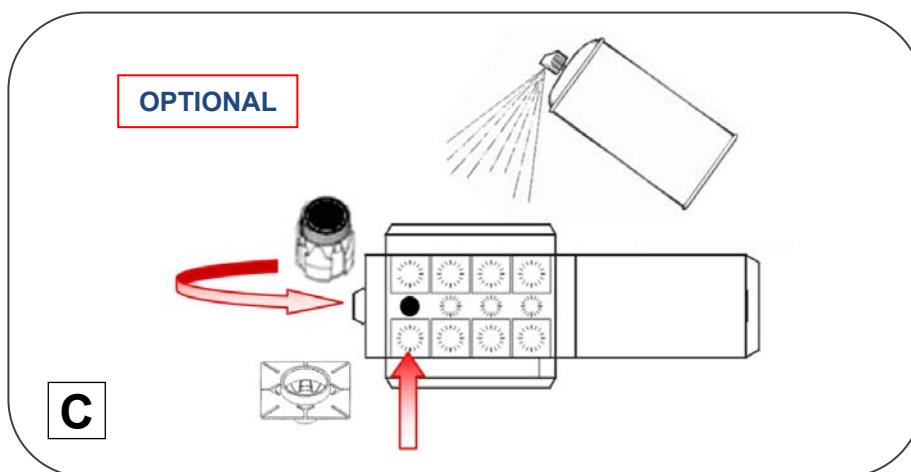


NOTE
 Use the supplied double-faced adhesive tape or screws to install the buzzer where the driver will clearly hear the audible signals.



CAUTION

Drill through the factory markings on the inside of the bumper using an 18mm drill bit.



Painting recommendations:

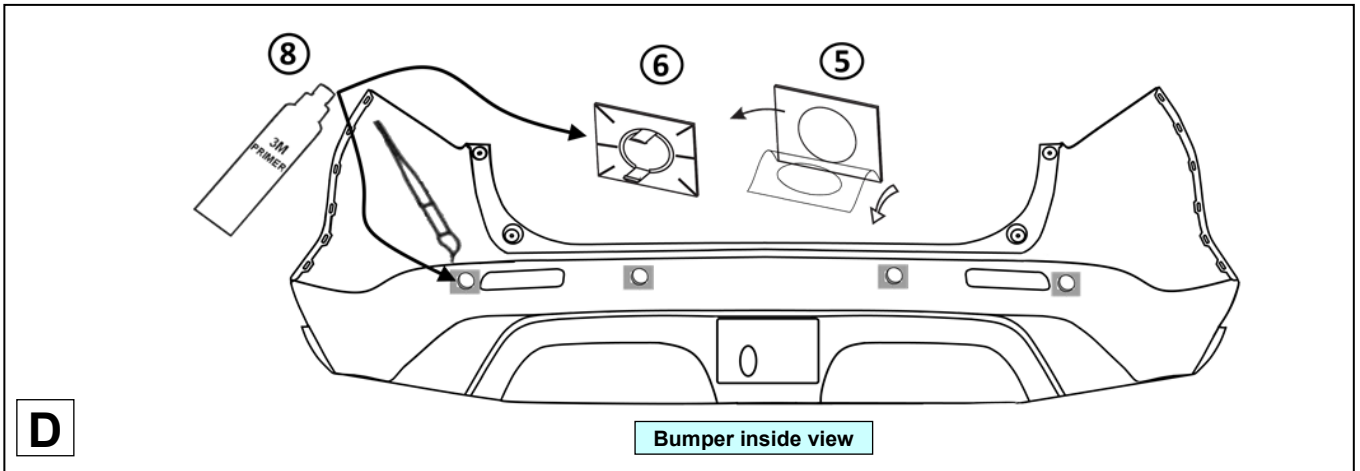
To spray paint proceed as follows:

- Use isopropyl alcohol to clean the sensors and the adapters and let dry. For better adhesion of paint, a proper primer (not supplied) must be applied.
- For a perfect spray-paint finish, we recommend turning down the black silicone seal around the sensor head before inserting the sensor into the slots.
- Fold the cardboard template into a box. Spray paint the sensors and the adapters and let dry thoroughly before assembling.
- No stoving of the paint (maximum 50°C / 122°F).

NB: Too much spray paint will affect sensors performance. Maximum thickness of paint: 100 µm.

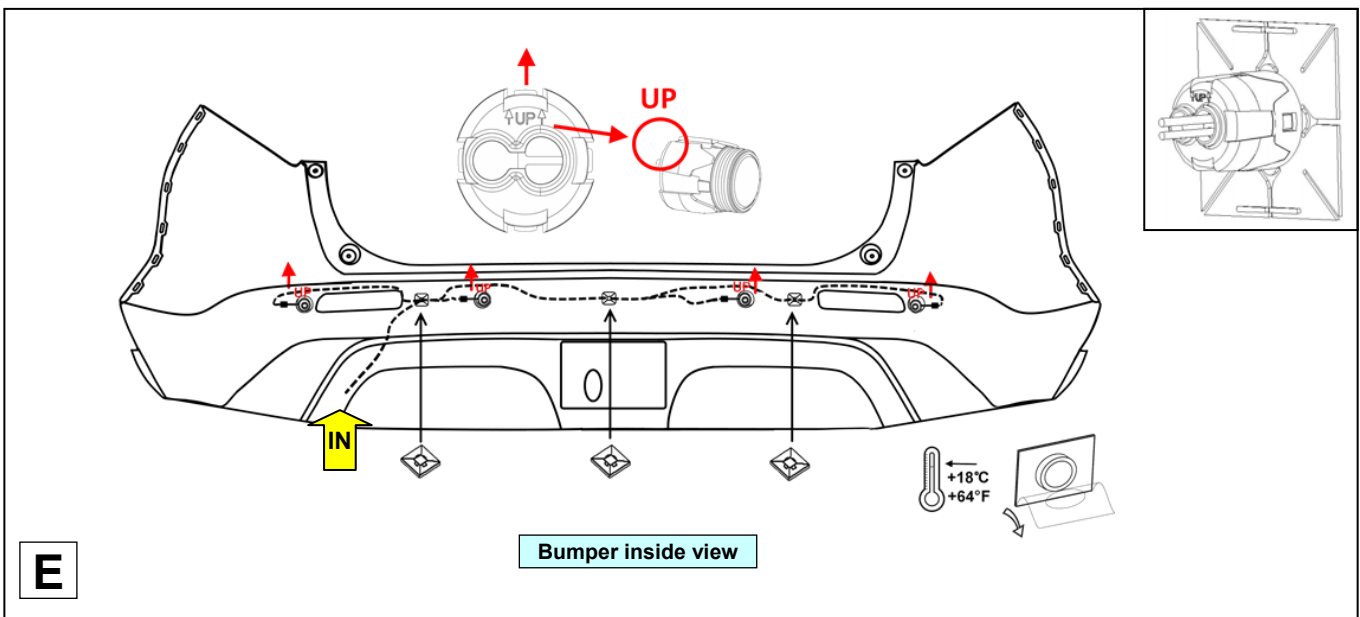
CAUTION

Clean and degrease plastic brackets (6) and around the holes. Apply primer (8), let dry for at least 1 minute and then proceed as follows.



CAUTION

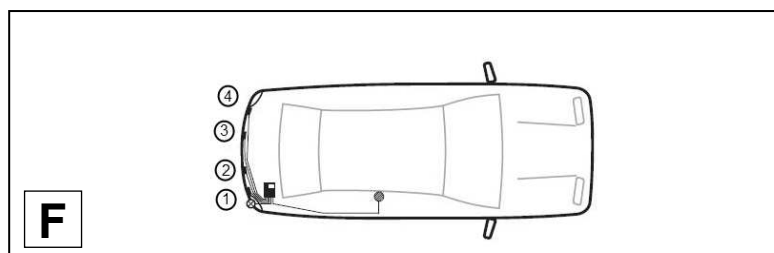
Clip the sensors into the adapters with the arrows and the **UP** indication facing upwards then connect to the wires coming out of the trunk.

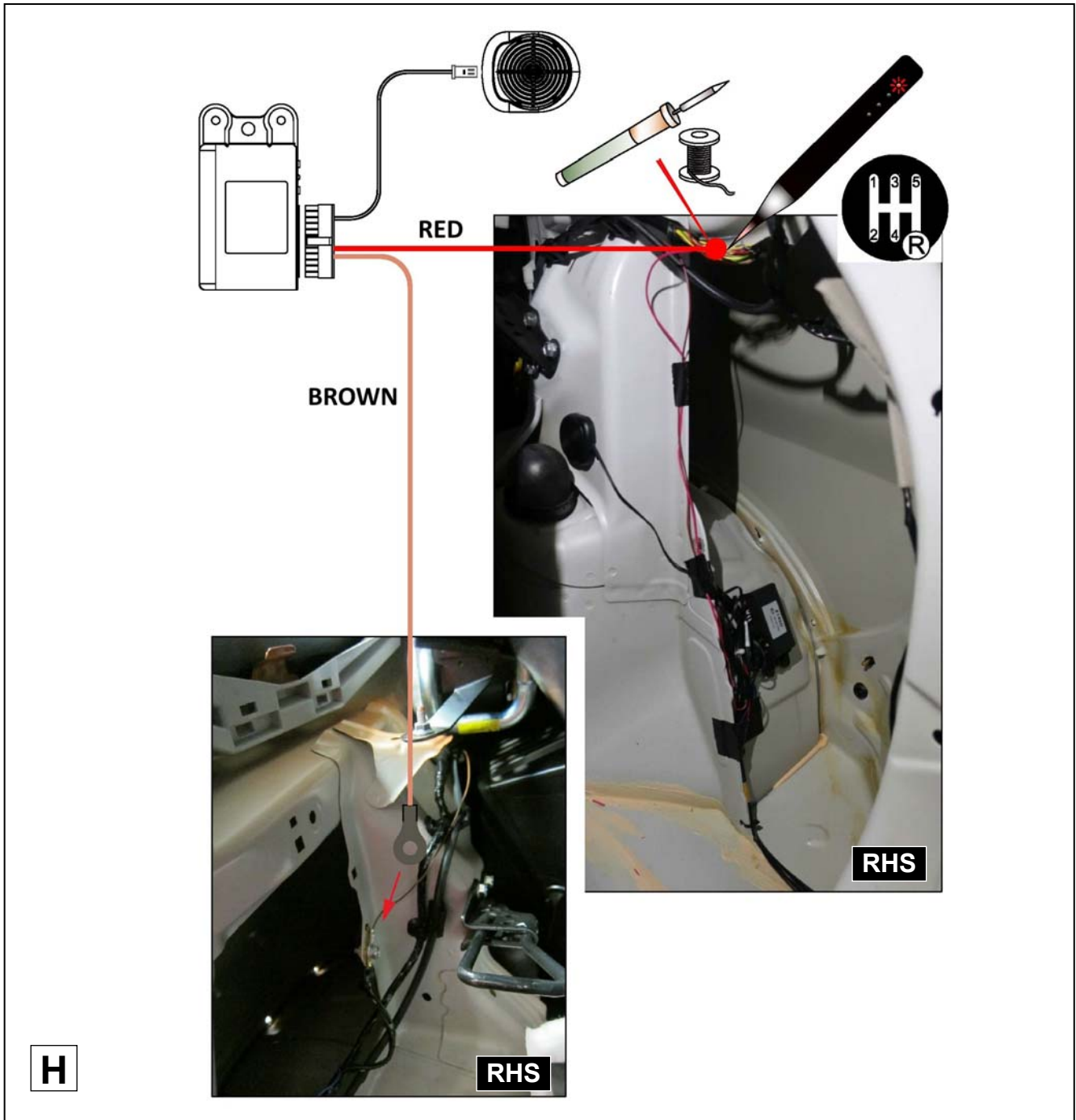


NOTE

Check length of cables before proceeding with final positioning of accessories.

- Sensor 1: shortest cable
- Sensor 4: longest cable





NOTE
 Use the supplied double-faced adhesive tape or screws to install the buzzer where the driver will clearly hear the audible signals.