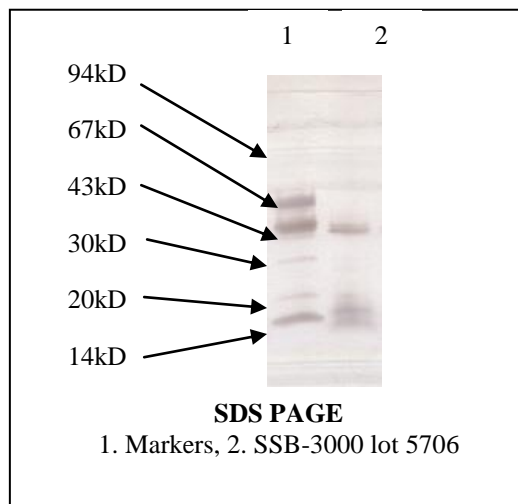


# Certificate of Analysis

**Product:** SSB-3000  
**Lot Number:** 5706  
**Appearance:** Frozen clear liquid  
**Expiration Date:** 01/June/2020  
**Material of Origin:** Rabbit thymus from USA origin



Parameter	Specification	Result
Protein Concentration by BCA	0.073-0.837 mg/ml	0.274mg/ml
Antigen titer by direct coat ELISA		
Vs Positive antibody 1	75-125%	101%
Vs Positive antibody 2	75-125%	96%
Vs Positive antibody 3	75-125%	105%
Mean	80-120%	101%
Noise/Signal ratio by direct coat ELISA		
Vs Normal serum	<0.037	-0.007
Vs SSA antibody	<0.069	0.009
Vs SCL-70 antibody	<0.114	0.011
Vs Sm antibody	<0.053	-0.009
Vs Sm-RNP Complex antibody	<0.037	0.004
Vs Mitochondrial antibody	<0.045	0.018

**Double Immunodiffusion Results:**

	Standard	Lot 5706
Titer vs specific antibody	1:16	1:16
Reaction with anti-host serum proteins	Negative	Negative

**Absorbance at 280nm:** 0.912 at 1: 1 dilution  
**This product meets or surpasses ImmunoVision specifications.**

*TL MK*

Quality Control Director

1/3/2014  
 Date