

Certificate of Analysis

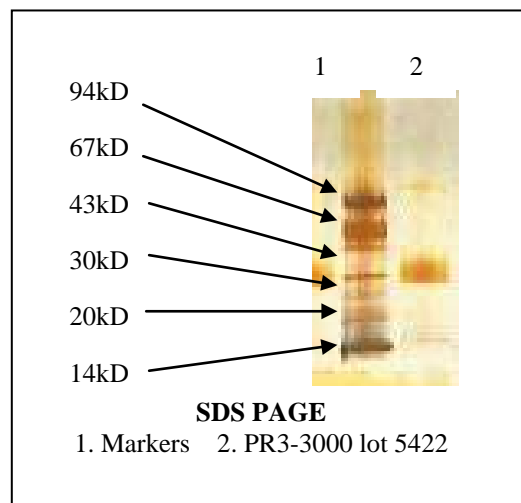
Product: PR3-3000, PR3-3100

Lot Number: 5422

Appearance: Frozen liquid

Expiration Date: 01/May/2018

Material of Origin: Human Promyelocytic cell line



Parameter	Specification	Result
Protein Conc. (A_{280})	0.3 to 0.8 mg/ml	0.514 mg/ml
Antigen titer by capture ELISA	50 to 200 % of standard	137 %
Antigen titer by direct coat ELISA Overall	80 to 120 % of standard	126%*
Vs Positive Antibody 1	75 to 125 % of standard	150 %*
Vs Positive Antibody 2	75 to 125 % of standard	104 %*
Vs Positive Antibody 3	75 to 125 % of standard	124 %*
Noise/Signal ratio by direct coat ELISA		
Vs Normal serum	<0.071	0.013
Vs MPO antibody	<0.034	-0.004
Vs DNA antibody	<0.019	-0.002
Vs SSA antibody	<0.029	0.015
Vs SSB Complex antibody	<0.039	0.005
Vs SCL-70 antibody	<0.031	0.020
Vs Smith antibody	<0.048	0.016
Vs Sm/RNP antibody	<0.029	0.015
Vs Jo-1 antibody	<0.029	0.012

*This product meets or surpasses ImmunoVision specifications.

TL ml

Quality Control Director

11/22/2011
Date