

## Certificate of Analysis

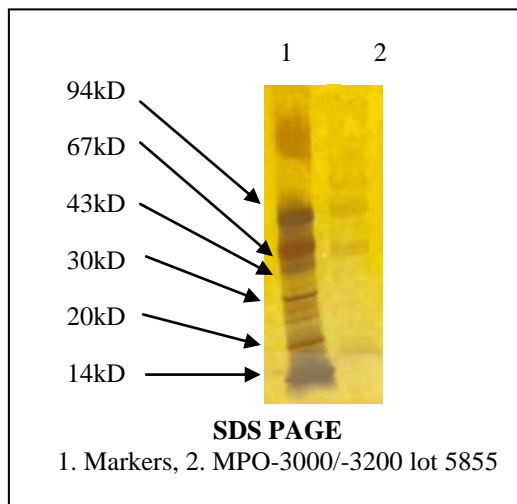
**Product:** MPO-3000/MPO-3200

**Lot Number:** 5855

**Appearance:** Lyophilized solid

**Expiration Date:** 01April2020

**Material of Origin:** Human Promyelocytic cell line



Parameter	Specification	Result
Protein Conc. (Coomassie Assay)	0. 86 - 1.5 mg/ml	1.41 mg/ml
Absorbance 430nm	1.10 to 1.20	1.18
RZ ( $A_{430} / A_{280}$ )	0.74 to 0.82	0.79
Purity by analytical gel filtration	>90%	95 %
Enzymatic activity	1580 - 2087u/mg	2009 u/mg
Antigen titer by direct coat ELISA Vs Positive Antibody 1 Vs Positive Antibody 2 Vs Positive Antibody 3	80 to 120 % of standard	98 % 93 % 85 %
Absorbance by direct coat ELISA Vs Negative Antibody 1 Vs Negative Antibody 2 Vs Negative Antibody 3	<0.050	0.021 0.044 0.035

This product meets or surpasses ImmunoVision specifications.

*TL MK*

Quality Control Director

7/9/2015

Date