

Certificate of Analysis

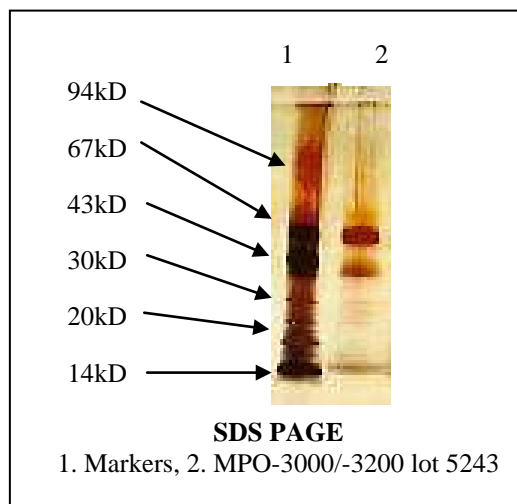
Product: MPO-3000/MPO-3200

Lot Number: 5243

Appearance: Lyophilized solid

Expiration Date: 01/June/2015

Material of Origin: Human Promyelocytic cell line



Parameter	Specification	Result
Protein Conc. (Coomassie Assay)	0.9 - 1.1mg/ml	0.922 mg/ml
Absorbance 430nm	1.10 to 1.20	1.15
RZ (A_{430} / A_{280})	0.74 to 0.82	0.77
Purity by analytical gel filtration	>90%	97.3 %
Enzymatic activity	1600 to 2400u/mg	1721.5 u/mg
Antigen titer by capture ELISA	50 to 200 % of standard	145 %
Antigen titer by direct coat ELISA Vs Positive Antibody 1 Vs Positive Antibody 2 Vs Positive Antibody 3	80 to 120 % of standard	88 % 118 % 129 %*
Absorbance by direct coat ELISA Vs Negative Antibody 1 Vs Negative Antibody 2 Vs Negative Antibody 3	<0.050	0.012 0.011 0.012

*This product meets or surpasses ImmunoVision specifications.

Quality Control Director

6/24/2010

Date