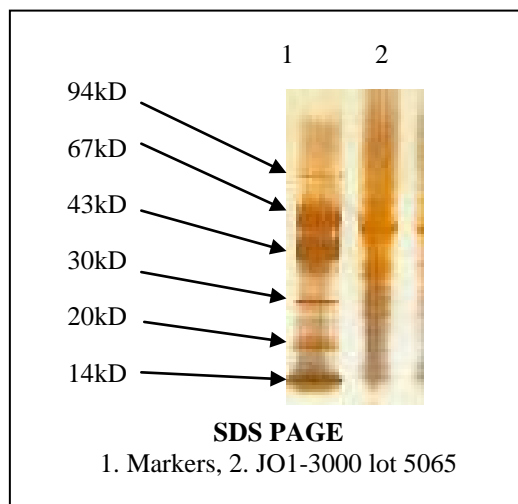


# Certificate of Analysis

**Product:** JO1-3000  
**Lot Number:** 5065  
**Appearance:** Clear Frozen Liquid  
**Expiration Date:** 01Feb2015  
**Protein Concentration:** 0.376 mg/ml  
**Absorbance at 280nm:** 0.7036 at 1:1 dilution



**ELISA Absorbances:**

Antibody	1 unit/well		0.5 unit/well	
	Standard	Lot 5065	Standard	Lot 5065
Positive 1	1.853	1.798	1.762	1.761
Positive 2	1.642	1.610	1.533	1.473
Positive 3	1.632	1.783	1.321	1.674
Negative 1	0.039	0.039	0.044	0.039
Negative 2	0.068	0.037	0.064	0.048
Negative 3	0.082	0.062	0.059	0.053

**Double Immunodiffusion Results:**

	Standard	Lot 5065
<b>Titer vs specific antibody</b>	1:16	1:32
<b>Reaction with anti-host serum proteins</b>	Negative	Negative

**Material of Origin:** Rabbit thymus from USA origin

This product meets or surpasses ImmunoVision specifications.

*TL MK*

\_\_\_\_\_  
Quality Control Director

8/25/2008  
\_\_\_\_\_  
Date