

Certificate of Analysis

Product: HIS-1000 and HIS-1010

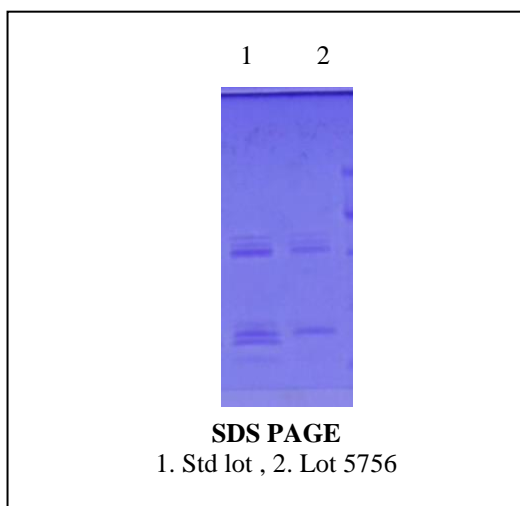
Lot Number: 5756

Appearance: Dry white powder

ELISA Absorbances:

Antibody	Standard	Lot 5756
Positive 1	1.692	1.869
Positive 2	1.211	1.386
Positive 3	1.153	1.209
Negative 1	0.485	0.344

SDS-Page results:



Material of Origin: Chicken red blood cells from USA origin

This product meets or surpasses ImmunoVision specifications.

Quality Control Director

5/9/2014
Date