

REFERENCES:

1. Qiu Q; Kuo A; Todd H; Dias JA; Gould JE; Overstreet JW; Lasley BL. Enzyme immunoassay method for total urinary follicle-stimulating hormone (FSH) beta subunit and its application for measurement of total urinary FSH. *Fertil Steril* 1998; 69(2):278-85.
2. Ulloa-Aguirre A; Timossi C. Structure-function relationship of follicle-stimulating hormone and its receptor. *Hum Reprod Update* 1998; 4(3): 260-83.
3. Desai MP; Khatkhatay MI; Sankolli GM; Joshi UM. Importance of selection of separation system in the development of enzyme immunoassay: an experience with follicle stimulating hormone (FSH) assay. *J Immunoassay*, 12(1):83-98 1991
4. Nordin BE; Morris HA; Need AG; Horowitz M; Robertson WG. Relationship between plasma calcium fractions, other bone-related variables, and serum follicle-stimulating hormone levels in premenopausal, perimenopausal, and postmenopausal women. *Am J Obstet Gynecol* 1990;163(1 Pt 1):140-5.
5. Rose MP. Follicle stimulating hormone international standards and reference preparations for the calibration of immunoassays and bioassays. *Clin Chim Acta* 1998; 273(2):103-17.
6. Popovic V; Micic D; Damjanovic S; Calovic L; Rolovic Z; Mijovic A; Petakov M; Manojlovic D; Micic J. Further evidence for differential regulation of follicle-stimulating hormone (FSH) and luteinizing hormone (LH): increased FSH and decreased LH levels in a patient with familial pure gonadal dysgenesis. *Postgrad Med J* 1992; 68(805):925-7.

2016-06-08

Cat#: FS232F (96 Tests)

For Order and Inquiries, please contact



Calbiotech Inc.,

1935 Cordell Ct., El Cajon, CA 92020

Tel (619) 660-6162, Fax (619) 660-6970,

www.calbiotech.com

Follicle Stimulating Hormone (FSH) SA ELISA

Catalog No.: FS232F (96 Tests)

INTENDED USE**For Research Use Only. Not for use in diagnostic procedures.**

MATERIALS PROVIDED	96 Tests
1. Microwells coated with Streptavidin	12x8x1
2. FSH Standard: 6 vials (ready to use)	0.5ml
3. FSH Enzyme Conjugate: 1 bottle (ready to use)	12 ml
4. TMB Substrate: 1 bottle (ready to use)	12ml
5. Stop Solution: 1 bottle (ready to use)	12ml
6. 20X Wash concentrate: 1 bottle	25ml

MATERIALS NOT PROVIDED

1. Distilled or deionized water
2. Precision pipettes
3. Disposable pipette tips
4. ELISA reader capable of reading absorbance at 450nm
5. Absorbance paper or paper towel
6. Graph paper

STORAGE AND STABILITY

1. Store the kit at 2 - 8° C.
2. Keep microwells sealed in a dry bag with desiccants.
3. The reagents are stable until expiration of the kit.
4. Do not expose reagents to heat, sun, or strong light.

WARNINGS AND PRECAUTIONS

1. For Research Use Only. Not for use in diagnostic procedures.
2. For laboratory use.
3. Potential biohazardous materials:
The Standard contain human source components which have been tested and found non-reactive for hepatitis B surface antigen as well as HIV antibody with FDA licensed reagents. However, as there is no test method that can offer complete assurance that HIV, Hepatitis B virus or other infectious agents are absent, these reagents should be handled at the Biosafety Level 2, as recommended in the Centers for Disease Control/National Institutes of Health manual, "Biosafety in Microbiological and Biomedical Laboratories." 1984
4. This kit is for research use only.
5. Do not pipette by mouth. Do not smoke, eat, or drink in the areas in which specimens or kit reagents are handled.
6. The components in this kit are intended for use as an integral unit. The components of different lots should not be mixed.
7. It is recommended that standards, control and serum samples be run in duplicate
8. Optimal results will be obtained by strict adherence to this protocol. Accurate and precise pipetting, as well as following the exact time and temperature requirements prescribed are essential. Any deviation from this may yield invalid data.

SPECIMEN COLLECTION HANDLING

1. Collect blood specimens and separate the serum immediately.
2. Typically, specimens may be stored refrigerated at (2-8° C) for 5 days. If storage time exceeds 5 days, store frozen at (-20° C) for up to one month.
3. Avoid multiple freeze-thaw cycles.
4. Prior to assay, frozen sera should be completely thawed and mixed well.
5. Do not use grossly lipemic specimens.

REAGENTS PREPARATION

20X Wash Buffer: Prepare 1X Wash buffer by adding the contents of the bottle (25 ml, 20X) to 475 ml of distilled or deionized water. Store at room temperature (20-25°C).

ASSAY PROCEDURE

Prior to assay, allow reagents to stand at room temperature.

Gently mix all reagents before use.

1. Place the desired number of coated strips into the holder
2. Pipette 50 µl of FSH standards, control and patient's sera in to selected wells.
3. Add 100 µl of enzyme conjugate to all wells.
4. Cover the plate and incubate for 60 minutes at room temperature (20-25°C).
5. Remove liquid from all wells. Wash wells three times with 300 µl of 1X wash buffer. Blot on absorbent paper towels.
6. Add 100 µl of TMB substrate to all wells.
7. Incubate for 15 minutes at room temperature.
8. Add 50 µl of stop solution to all wells. Shake the plate gently to mix the solution.
9. Read absorbance on ELISA Reader at 450 nm within 15 minutes after adding the stopping solution.

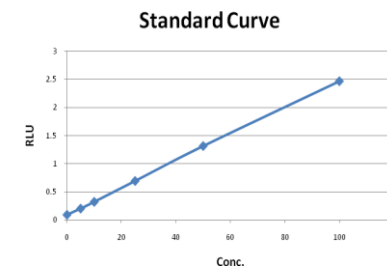
CALCULATION OF RESULTS

The standard curve is constructed as follows:

1. Check FSH standard value on each standard vial. This value might vary from lot to lot. Make sure you check the value on every kit. See example of the standard attached.
2. To construct the standard curve, plot the absorbance for the FSH standards (vertical axis) versus the FSH standard concentrations (horizontal axis) on a linear graph paper. Draw the best curve through the points.
3. Read the absorbance for controls and each unknown sample from the curve. Record the value for each control or unknown sample.

Example of a Standard Curve

	Conc. mIU/mL	OD 450 nm
Std 1	0	0.09
Std 2	5	0.20
Std 3	10	0.32
Std 4	25	0.69
Std 5	50	1.31
Std 6	100	2.46

**LIMITATIONS OF THE TEST**

1. Do not use sodium azide as preservative. Sodium azide inhibits HRP enzyme activities.