

# BEACHCLUB

LOOKBOOK



friendly hunting

FOR PEOPLE  
WITH POSITIVE  
ATTITUDE



BEACHCLUB

COLLECTION



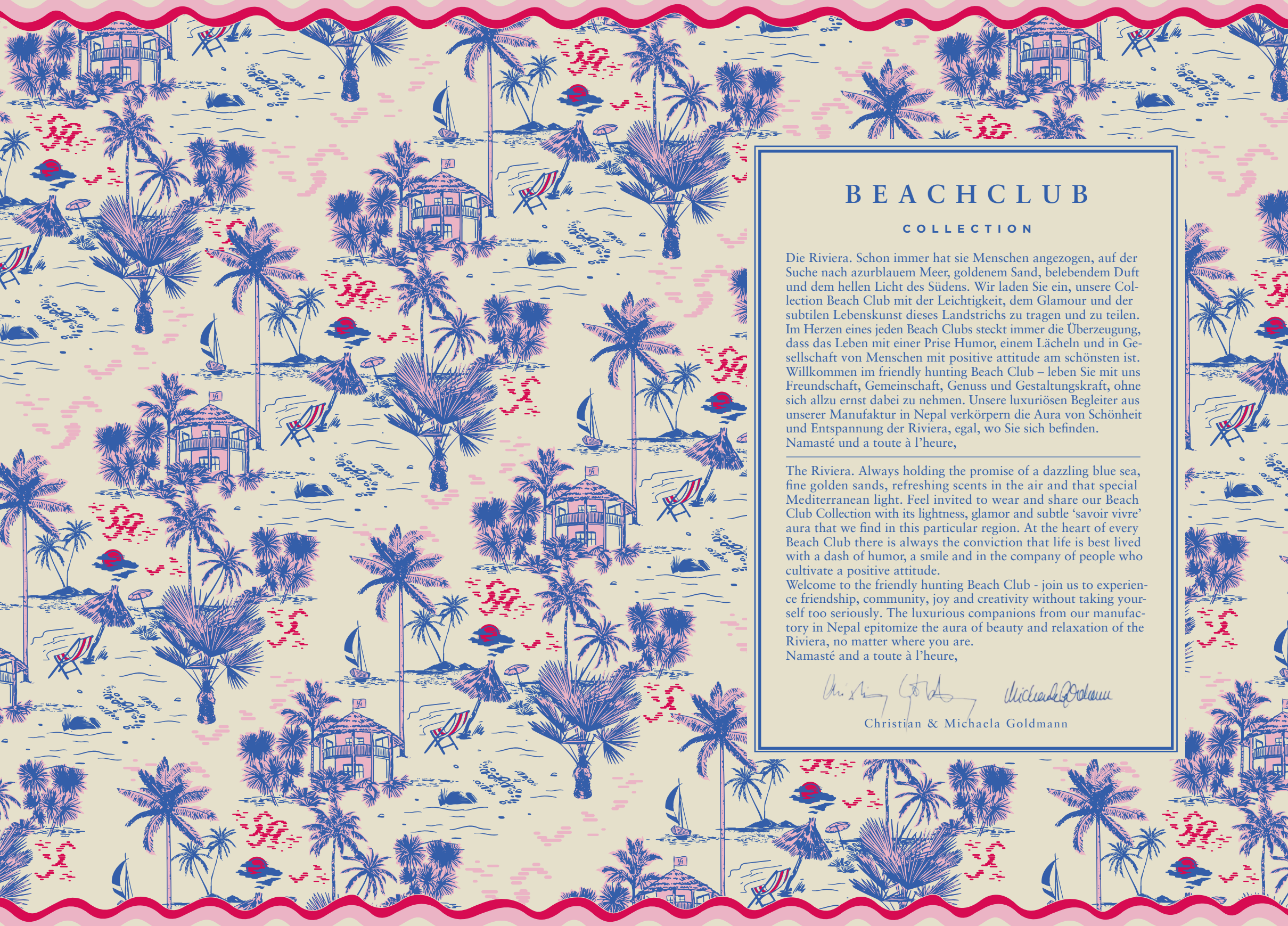






A woman with long brown hair is lying on her side against a black background. She is wearing a black and white horizontally striped long-sleeved top and a matching skirt. Her eyes are closed, and she has a serene expression. Her hands are resting on her waist. The lighting is soft, highlighting the texture of the fabric and the contours of her body.

WE GUARD  
YOU THROUGH  
THICK AND  
THIN



# BEACHCLUB

## COLLECTION

Die Riviera. Schon immer hat sie Menschen angezogen, auf der Suche nach azurblauem Meer, goldenem Sand, belebendem Duft und dem hellen Licht des Südens. Wir laden Sie ein, unsere Collection Beach Club mit der Leichtigkeit, dem Glamour und der subtilen Lebenskunst dieses Landstrichs zu tragen und zu teilen. Im Herzen eines jeden Beach Clubs steckt immer die Überzeugung, dass das Leben mit einer Prise Humor, einem Lächeln und in Gesellschaft von Menschen mit positiver attitude am schönsten ist. Willkommen im friendly hunting Beach Club – leben Sie mit uns Freundschaft, Gemeinschaft, Genuss und Gestaltungskraft, ohne sich allzu ernst dabei zu nehmen. Unsere luxuriösen Begleiter aus unserer Manufaktur in Nepal verkörpern die Aura von Schönheit und Entspannung der Riviera, egal, wo Sie sich befinden. Namasté und a toute à l'heure,

The Riviera. Always holding the promise of a dazzling blue sea, fine golden sands, refreshing scents in the air and that special Mediterranean light. Feel invited to wear and share our Beach Club Collection with its lightness, glamor and subtle 'savoir vivre' aura that we find in this particular region. At the heart of every Beach Club there is always the conviction that life is best lived with a dash of humor, a smile and in the company of people who cultivate a positive attitude.

Welcome to the friendly hunting Beach Club - join us to experience friendship, community, joy and creativity without taking yourself too seriously. The luxurious companions from our manufactory in Nepal epitomize the aura of beauty and relaxation of the Riviera, no matter where you are. Namasté and a toute à l'heure,

*Christian & Michaela Goldman*

Christian & Michaela Goldman





LEFT: FH-NE 8016GE/EY STOLE COLON ARAMIS GARDEN EDEN / EYES OF MARRAKESH COL. 05  
 FH-NE 8310SEY2 DRESS FUERTE EYES OF MARRAKESH COL. HAYSTACK / UMBER  
 RIGHT: FH-NE MIDICUBE-SRY-ST SILK SCARF MIDICUBE STING RAY COL. 05  
 FH-NE 8107SAS2 DRESS DANCE LONG ATLANTIS 2 COL. HAYSTACK / UMBER



FH-NE 0705EY2 PIPPING PILLOW EYES OF MARRAKESH COL. CHALK / HAYSTACK / PERSIMMON  
 FH-NE 0704SRY2 PIPPING PILLOW STINGRAY COL. CHALK / HAYSTACK / PERSIMMON  
 FH-NE MIDICUBE-SRY-ST SILK SCARF MIDICUBE STINGRAY COL. 05  
 FH-NE 8107SAS2 DRESS DANCE LONG ATLANTIS 2 COL. HAYSTACK / UMBER



FH-NE 8343AMARA CARDIGAN SONG MULTI AMARA COL. 1  
 FH-NE 8372GE SHIRT SING JERSEY GARDEN EDEN COL. HAYSTACK / UMBER  
 FH-NE 8297KN2 PANTS AMAL JERSEY COL. HAYSTACK / UMBER



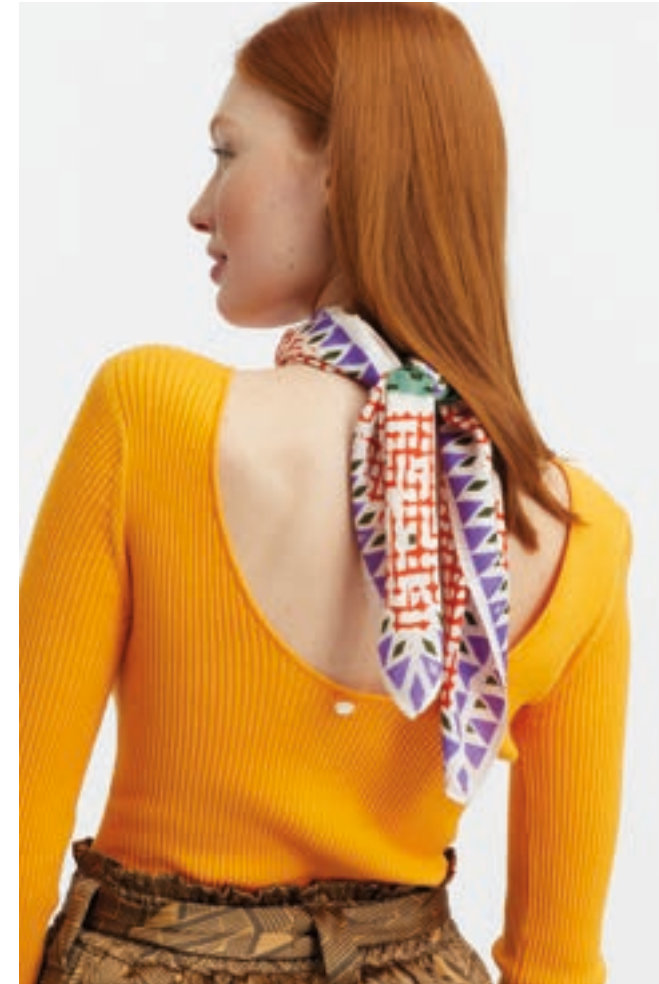
LEFT: FH-NE KITE SCARF-KN SILK /CASHMERE SCARF KITE-KETANO COL. 08  
 FH-NE 8300 SHIRT LENTO COL. SAND STONE | FH-NE 7236SKN PANTS BABAI KETANO COL. HAYSTACK/UMBER  
 RIGHT: FH-NE AIRY-CEA SCARF AIRY COL. 33  
 FH-NE 8372GE SHIRT SING JERSEY GARDEN EDEN COL. HAYSTACK / UMBER  
 FH-NE 8297KN2 PANTS AMAL JERSEY COL. HAYSTACK / UMBER



LEFT: FH-NE 7905SCEA DRESS ISATIS CHEETAH COL. 32  
 RIGHT: FH-NE 8346ST CARDIGAN JOSEFA NEW STRIPE COL. DAHLIA/INCA  
 FH-NE 6601SCEA SKIRT SHIFT CHEETAH COL. 32



FH-NE CUBEFEL-CEA FELTED SCARF CUBE CHEETAH COL. 32  
 FH-NE 8346ST CARDIGAN JOSEFA NEW STRIPE COL. DAHLIA/INCA  
 FH-NE 6601SCEA SKIRT SHIFT CHEETAH COL. 32



FH-NE MIDICUBE-AI-ST SCARF MIDICUBE ARANCIA COL. 02  
FH-NE 8315CC SHIRT SUCIO CC COL. LOTUS  
FH-NE 7236SKN PANTS BABAI KETANO COL. HAYSTACK/UMBER



LEFT: FH-NE 8328SBC DRESS PINTER BEACH CLUB COL. 02  
 FH-NE SUPER PATCH-CEA SCARF CHEETAH COL. 101  
 RIGHT: FH-NE MIDICUBE-SRY SILK SCARF MIDICUBE COL. 06  
 FH-NE 8319RIB CARDIGAN CREEK RIB COL. TETBURY  
 FH-NE 7906SBC PANTS KUTAI BEACH CLUB COL. 02



FH-NE 8328SBC DRESS PINTER BEACH CLUB COL. 02



FH-NE 8345ST AMARA CARDIGAN ANCON STRIPE COL. MALIBU/PERSIMMON  
 FH-NE 8312SEY2 DRESS RACIO EYES OF MARRAKESH COL. DAYGLOW / PERSIMMON



LEFT: FH-NE EXPLORER CUBE-BC BEACH CLUB COL. 06  
 FH-NE 8302 SWEAT CARO BODHI COL. BODHI LUPINE  
 FH-NE 6601CEA2 SKIRT SHIFT CHEETAH2 COL. DAYGLO/PERSIMMON  
 RIGHT: FH-NE 8308SSRY BLOUSE UTIL STINGRAY COL. 04  
 FH-NE 6601CEA2 SKIRT SHIFT CHEETAH2 COL. DAYGLO / PERSIMMON



LEFT: FH-NE 8317SEY2 DRESS DEPORTE EYES OF MARRAKESH2 COL. CHAI / CEDAR  
 FH-NE 8346ST CARDIGAN JOSEFA NEW STRIPE COL. CHAI / CEDAR  
 RIGHT: FH-NE 8338SBC SHIRT AZUL BEACH CLUB COL. 04  
 FH-NE 7128SCEA2 PANTS PALI SILK CHEETAH 2 COL. CHAI / CEDAR



LEFT: FH-NE 8330SCEA DRESS COSER CHEETAH COL. 31  
 RIGHT: FH-NE 8320SCEA DRESS PRIMESA CHEETAH COL. 30



FH-NE 8327SCEA DRESS CANTAR CHEETAH COL. 33  
FH-NE 0806BC FELTED STOLE BEACH CLUB COL. 04







A close-up photograph of a woman's face, looking down with a somber expression. Her face is partially obscured by a large, tangled mass of colorful plastic waste, including green, red, pink, and gold strands. The background is dark, making the woman's face and the vibrant colors of the plastic stand out.

BEAUTY  
WILL SAVE THE  
WORLD





Hi









Hi







LEFT: FH-NE EXPLORER CUBE-AS ATLANTIS COL. 01 | FH-NE 8324ORIANA SWEAT VALET ORIANA COL. JUTE  
 FH-NE 7020SCEA SHORTS ISANA CHEETAH COL. 01  
 RIGHT: FH-NE 7920SSRY2 COAT MENTHA STINGRAY2 COL. GHOST / GRIZZLY  
 FH-NE 8311SCEA TOP ACOS CHEETAH COL. 01 | FH-NE 7020SCEA SHORTS ISANA CHEETAH COL. 01

FH-NE 8308SGE BLOUSE UTIL GARDEN EDEN COL. TETBURY / PRUSSIAN  
 FH-NE 7020SCEA SHORTS ISANA CHEETAH COL. 01



FH-NE 8318AMARA CARDIGAN COLLAR AMARA COL.MANTIS  
FH-NE 8297GE PANTS AMAL JERSEY COL. TETBURY / PRUSSION



LEFT: FH-NE SCARF SQUARE-GE CASHMERE SCARF SQUARE GARDEN EDEN COL. 286  
FH-NE 8332SAS SHIRT ESPERA ATLANTIS COL. 05 | FH-NE 8297SRY PANTS AMAL JERSEY STINGRAY COL. 06  
RIGHT: FH-NE 8016CEA/GE2 STOLE COLON CEA/ GE2 | FH-NE 8371SRY SHIRT FIT JERSEY STINGRAY COL. 06  
FH-NE 8297SRY PANTS AMAL JERSEY STING RAY COL. 06



FH-NE MIDICUBEFEL-EY FELTED SCARF MIDICUBE EYES OF MARAKESH COL. 130  
 FH-NE 8318AMARA CARDIGAN COLLAR AMARA COL.MALIBU  
 FH-NE 8322SBC DRESS NUNCA BEACH CLUB COL. 04



FH-NE MIDICUBEFEL-EY FELTED SCARF MIDICUBE EYES OF MAARAKESH COL. 130  
 FH-NE 8322SBC DRESS NUNCA BEACH CLUB COL. 04



FH-NE 8377KN2 DRESS SING JERSEY KETANO 2 COL. TETBURY / PRUSSIAN  
 FH-NE SUPER LICA CASHMERE/LINEN-CEA CHEETAH COL. 32



FH-NE 8313SCKN2 DRESS LIENO KETANO 2 COL. CEDAR / UMBER



LEFT: FH-NE 7904SSRY TOP SALVIA STINGRAY COL. 01 | FH-NE 8331SSRY SKIRT ESTOY STINGRAY COL. 01  
 RIGHT: FH-NE 8326CCRIP SHIRT BUCKLE CC RIP COL. BLACK | FH-NE 8331SSRY SKIRT ESTOY STINGRAY COL. 01

LEFT: FH-NE 8373SRY DRESS INTERACT JERSEY STINGRAY COL. 01  
 RIGHT: FH-NE 8325AMARA COAT GANAR AMARA COL. GEMINI  
 FH-NE 6531SSRY DRESS MOVIES STINGRAY COL. 1



LEFT: SU-NE 5757SSRY DRESS DANCE STINGRAY COL. 03  
 RIGHT: FH-NE 8323SKN TOP LUEGO KETANO COL. 02  
 FH-NE 7918SKN SKIRT NIPIGON LONG KETANO COL. 02



LEFT: FH-NE 7310ST AMARA CARDIGAN CARINE STRIPE COL. 01  
 FH-NE 8306CCRIP TOP COMIN RIP COL. GLINDA | FH-NE 7906SBC PANTS KUTAI BEACH CLUB COL. 01  
 RIGHT: FH-NE MIDICUBE-SZ-ST SILK SCARF MIDICUBE SAINT TROPEZ COL. CHALK / TETBURY  
 FH-NE 8306CCRIP TOP COMIN RIP COL. GLINDA | FH-NE 7906SBC PANTS KUTAI BEACH CLUB COL. 01



FH-NE 8303ST SKIRT FACIL STRIPE COL. BLACK/CHALK  
FH-NE 8304ST JUMPER BAJO STRIPE COL. BLACK/CHALK



FH-PO 7190 HAPPY SHIRT COTTON COL. 07



LEFT: FH-NE 0732CEA2 SQUARE PIPPING PILLOW CHEETAH 2 CHALK/CHATEAU ROSE/CHALK  
 FH-NE 0732CEA2 SQUARE PIPPING PILLOW CHEETAH 2 CHALK / TETBURY / CHALK  
 RIGHT: FH-NE 0705BC PIPPING PILLOW BEACH CLUB COL. 01  
 FH-NE 0705GE PIPPING PILLOW GARDEN EDEN COL.CHALK/CHATEAU ROSE/CHALK



LEFT: FH-NE MIDICUBE-AI-ST SILK SCARF MIDICUBE-ARANCIA COL. 01  
 FH-NE 8390KN SHORT BLOUSE KETANO COL. 03  
 RIGHT: FH-NE MIDICUBEFEL-KN FELTED MIDICUBE-KETANO SCARF COL. 06  
 FH-NE 8392BC BLOUSE MALE BEACHCLUB COL. 06







FH-NE 8301ST SWEAT LARGO AMARA STRIPE COL.AMBER/GEMINI



FH-NE 8307SCKN TOP RARO KETANO COL. HAYSTACK / UMBER



# friendly hunting

Eau de Parfum

## VAHANA

---

Das Glück der Gefühle ohne Sprache. Vahana ist ein Sanskritwort und bedeutet das Reittier einer Gottheit. Die heiligen, klärenden Harze des Weihrauchs und honigsüßes Neroli öffnen die Sinne für die Sprache der Blumen. Die Lilie spricht von Eleganz, Sinnlichkeit und Würde, der Lotos und der Jasmin von Zuversicht und Euphorie. Eingehüllt in die Weichheit des Cashmeres und die Wärme des weissen Moschus werden die innersten Gefühle und Gedanken ohne Worte ausgedrückt, ganz bei sich und dennoch tief verbunden.

WÄRMEND, VERFÜHRERISCH, STÄRKEND


Orangenblüten, Weihrauch, Lilie, Lotos, Jasmin,  
Cashmere, weißer Moschus

MANUFACTURED IN GERMANY

[www.friendly-hunting.com](http://www.friendly-hunting.com)





A woman with long, wavy brown hair is shown from the waist up, turned away from the camera but looking back over her right shoulder. She is wearing a strapless, patterned top with a mix of red, yellow, black, and white. The background is a solid, dark grey or black. The lighting is dramatic, highlighting her skin and hair.

WE BELIEVE IN A  
BEAUTIFUL EXISTANCE  
FOR ALL

# RESPONSIBLE LUXURY

ORGANIC

ECO-FRIENDLY

RECYCLED

ANIMAL WELFARE



Unser Garn ist mit dem GOTS Siegel ausgezeichnet. Es steht für Global Organic Textile Standard und gilt als weltweit führender Standard für die Verarbeitung von Textilien aus zertifiziert biologisch erzeugten Naturfasern.

All of our yarns are GOTS-certified. The GOTS, short for Global Organic Textile Standard, is recognized worldwide as the leading standard for textiles manufactured from certified organically produced natural fibers.





Pratima



*Menschen wurden erschaffen, um geliebt zu werden.  
Dinge wurden geschaffen, um benutzt zu werden.  
Der Grund, warum sich die Welt im Chaos befindet,  
ist, weil Dinge geliebt und Menschen benutzt werden.*  
Dalai Lama

Ihre Leidenschaft zu unseren Produkten und Ihr Sinn für Schönheit, nicht nur im Außen, sondern auch im Inneren macht es möglich, die Kinder in unserem Waisenhaus Amazing Namasté in allen Zeiten gut zu begleiten und mit ihnen zu lieben, leben und zu lachen. Danke für Ihre Treue und Vertrauen.

SPENDENKONTO: NAMASTÉ E.V. |  
KREISSPARKASSE WASSERBURG | IBAN: DE07 7115 2680 0000 2151 45 | BIC: BYLADEM1WSB  
Namasté e.V. | Weng 5 | D-83556 Griesstätt | Telefon +49(0)8038 9099248 | [www.namaste-project.com](http://www.namaste-project.com)

powered by



friendly hunting



namaste

# Stores

## MÜNCHEN

Friendly Hunting Store München  
Salvatorstraße 5 / Fünf Höfe  
80333 München

TEL +49 (89) 237 496 86

## DÜSSELDORF

Friendly Hunting Store Düsseldorf  
Heinrich-Heine-Allee 36  
40213 Düsseldorf

TEL +49 (211) 200 599 03

## FRANKFURT

Friendly Hunting Store Frankfurt  
Neue Mainzer Str. 74  
60311 Frankfurt am Main

TEL +49 (69) 299 927 79



WE LONG TO  
GUARD YOU THROUGH  
THICK AND THIN



friendly hunting

[WWW.FRIENDLY-HUNTING.COM](http://WWW.FRIENDLY-HUNTING.COM)