

SK-WLSE-MOD

USER/ INSTALLATION MANUAL



Wireless LAN Module
for Use with
SK-ACPE and SK-MRCP (NOVA.16)
Access Control Panels

Secura Key
A Division of SOUNDCRAFT Inc.

INTRODUCTION

The SK-WLSE-MOD Wireless LAN Module is an accessory for the Secura Key SK-ACPE and SK-MRCP (NOVA.16) Access Control Panels, which allows the control panel to connect to the host system via an existing 802.11b/g Wireless Router. The SK-WLSE-MOD is based on the Lantronix xPico® Wi-Fi module, which is a complete device server suitable for mobile M2M applications. It can be configured from any mobile device, including smartphones and tablets, or a laptop.

REQUIRED INFORMATION

The SK-WLSE-MOD serial number is the MAC Address. This number is available on the label. Provide this number to the System Administrator.

Example: 0080A39805ED

The SK-WLSE-MOD must have a unique Static IP Address on your network. The System Administrator generally provides the IP address, Subnet Mask, Gateway and the SSID (Network Name). Write these down in the blank spaces below for future reference.

IP Address _____

Subnet Mask _____

Gateway _____

SSID (Network Name): _____

PHYSICAL INSTALLATION

1. Install the module component-side-up, lining up the screw holes on the module to those on the panel. The antenna wire should be located at the top of the board.
 - a. On the SK-ACPE control panel, install the module at J12. The panel's firmware version must be 3.08 or higher, and the panel must be REV For higher (Rev. Label is located near the center of the circuit board.).
 - b. On the SK-MRCP (NOVA.16) control panel, install the module at J6. The panel's firmware version must be 1.02 or higher, and the panel must be REV C or higher (Rev Label is located near the center of the circuit board).

2. Attach the antenna cable to the Wi-Fi module. Unscrew the antenna from the brass fitting at the end of the cable, and insert the threaded fitting up through the access hole in the control panel housing. Then, screw the antenna down over the threaded part.
3. Move the jumper JP1 (located at the top of the control panel circuit board) from pins 2 & 3 to 1 & 2 to enable the Wi-Fi module
4. Apply power to the control panel.

ACCESSING THE XPICO® WI-FI MODULE CONFIGURATION SCREEN

1. By default, the SoftAP mode is enabled with a default SSID of XpicoWiFi_XXXXXX, where XXXXXX are the last six characters of the unique xPico Wi-Fi serial number (or the MAC address). For example if the serial number is 0080A398010E then the SSID would be xPicoWiFi_98010E.
2. A Wi-Fi enabled device is required to configure the SK-WLSE-MOD. You can use an Android or Apple (iOS) smart phone or tablet, or a laptop computer. Disconnect any other networks from the device you will be using to do the configuration.
3. On your mobile device, go to your Wi-Fi Settings, look for the SSID named XpicoWiFi_XXXXXX, then select and connect your device to it. The default security for the xPico WiFi SoftAP is WPA2 and the passphrase is XPICOWIFI (case sensitive).
4. Open a web browser such as Google Chrome, Mozilla Firefox, Apple Safari, or the latest version of Windows Internet Explorer (older versions may not work) and navigate to either xpicowifi.lantronix.com or 192.168.0.1. If you do not see the xPico menu, try a different browser.
5. When prompted enter the USERNAME = admin and the PASSWORD = PASSWORD to access the configuration and management web pages (both are case sensitive)
6. Now you will be able to view the web configuration screen.

CONFIGURING THE XPICO® WI-FI MODULE

Using the IP Address and other information from your Network System Administrator, complete the following steps:

The screenshot shows the Xpico Wi-Fi configuration interface. On the left is a navigation menu with options: QuickConnect, Status, CPM, Device, Diagnostics, File System, HTTP, Line, Modern Emulation, Monitor, Network (highlighted), Performance, SPI, Tunnel, Users, and WLAN Profiles. The main content area is titled 'Interface wlan0 Configuration' and contains a form with the following fields:

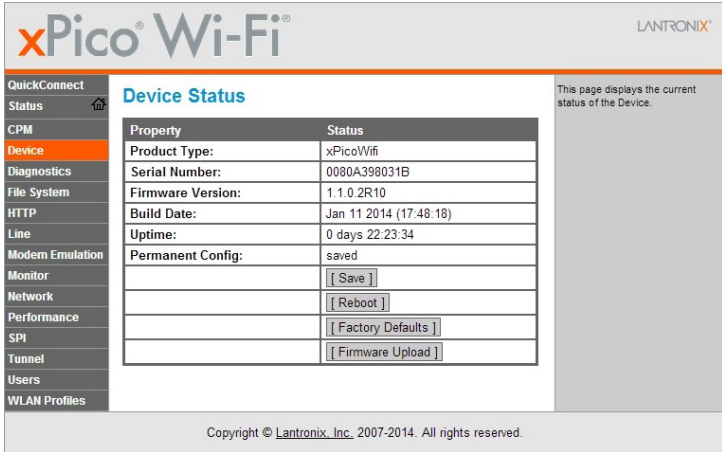
State:	<input checked="" type="radio"/> Enabled <input type="radio"/> Disabled
DHCP Client:	<input type="radio"/> Enabled <input checked="" type="radio"/> Disabled
IP Address:	<input type="text" value="192.168.101.138"/>
Default Gateway:	<input type="text" value="192.168.101.1"/>
Hostname:	<input type="text" value="wireless"/>
Primary DNS:	<input type="text" value="192.168.101.11"/>
Secondary DNS:	<input type="text" value="<None>"/>

Below the form is a 'Submit' button. To the right of the form, there is a text box with the following text: 'These settings pertain to the Network interface on the device. To see the effect of these selections after a reboot, view the corresponding Status. Changes will take effect after reboot. When an Access Point is enabled, DHCP Server will assign IP addresses to the access point's clients. DHCP Server manages up to 4 client IP addresses (only 3 if wlan0 is enabled). The first IP Address will be the Access Point's IP Address plus one. For example, if the Access Point's IP Address is 192.168.0.1, the client addresses will range from 192.168.0.2 to 192.168.0.5.'

At the bottom of the page, there is a copyright notice: 'Copyright © Lantronix, Inc. 2007-2014. All rights reserved.'

1. Select Network from the menu on the left side of the screen
2. Select wlan0, Interface, and Configuration
3. State = select Enabled
4. DHCP Client = select Disabled (this will create a static IP address)
5. IP Address = enter the Static IP Address assigned to the Wi-Fi module
6. Default Gateway = enter the IP Address of Gateway Server
7. Hostname = Hostname assigned to Wi-Fi Module (use the default/ displayed value)
8. Primary DNS = IP Address of DNS Server (use the default/displayed value)
9. Secondary DNS = IP address of backup DNS Server (if applicable, use the default/displayed value)
10. Click on the Submit button on the bottom to make changes

SAVING CONFIGURATION AND REBOOTING



xPico® Wi-Fi LANTRONIX

QuickConnect Status CPM **Device** Diagnostics File System HTTP Line Modem Emulation Monitor Network Performance SPI Tunnel Users WLAN Profiles

Device Status

This page displays the current status of the Device.

Property	Status
Product Type:	xPico/Wifi
Serial Number:	0080A398031B
Firmware Version:	1.1.0.2R10
Build Date:	Jan 11 2014 (17:48:18)
Uptime:	0 days 22:23:34
Permanent Config:	saved

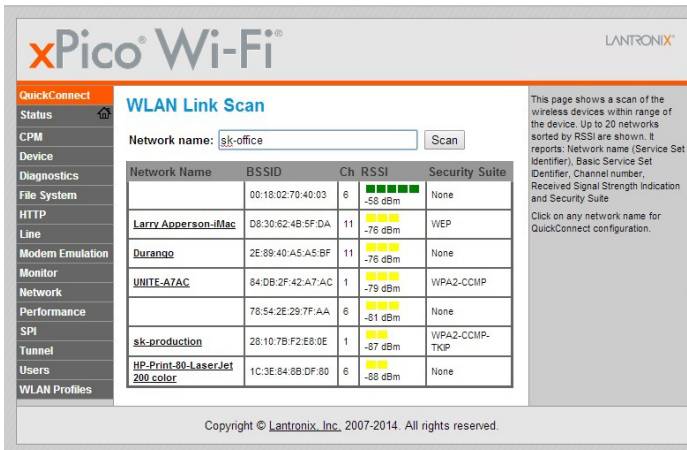
[Save]
[Reboot]
[Factory Defaults]
[Firmware Upload]

Copyright © Lantronix, Inc. 2007-2014. All rights reserved.

1. Select Device from the menu on the left side of the screen
2. Click on Save to save any changes made in the previous steps
3. Click on Reboot to reboot the Wi-Fi module and applies all changes.

CONNECTING TO A WIRELESS NETWORK

1. Select Quick Connect from the menu on the left side of the screen



xPico® Wi-Fi LANTRONIX

QuickConnect Status CPM Device Diagnostics File System HTTP Line Modem Emulation Monitor Network Performance SPI Tunnel Users WLAN Profiles

WLAN Link Scan

This page shows a scan of the wireless devices within range of the device. Up to 20 networks sorted by RSSI are shown. It reports: Network name (Service Set Identifier), Basic Service Set Identifier, Channel number, Received Signal Strength Indication and Security Suite.
Click on any network name for QuickConnect configuration.

Network name:

Network Name	BSSID	Ch	RSSI	Security Suite
	00:18:02:70:40:03	6	█ █ █ █ █ -58 dBm	None
Larry Apperson:IMac	D8:30:62:4B:5F:DA	11	█ █ █ █ █ -76 dBm	WEP
Durango	2E:89:40:A5:A5:BF	11	█ █ █ █ █ -76 dBm	None
UMTE-A7AC	84:0B:2F:42:A7:AC	1	█ █ █ █ █ -79 dBm	WPA2-CCMP
	78:54:2E:29:7F:AA	6	█ █ █ █ █ -81 dBm	None
sk-production	28:10:7B:F2:E8:0E	1	█ █ █ █ █ -87 dBm	WPA2-CCMP-TKIP
HP-Print-30-LaserJet 209_color	1C:3E:84:8B:DF:80	6	█ █ █ █ █ -88 dBm	None

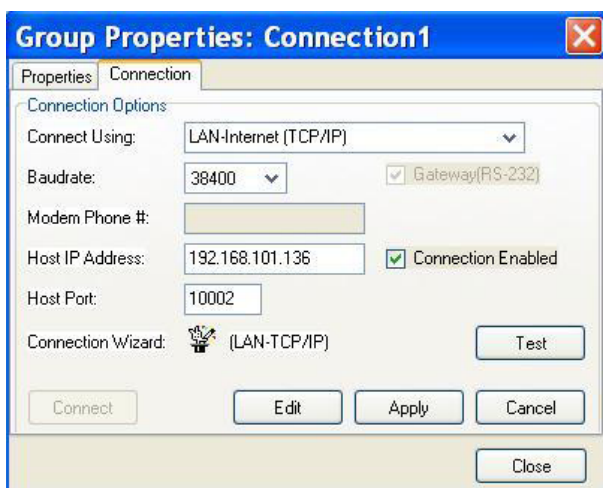
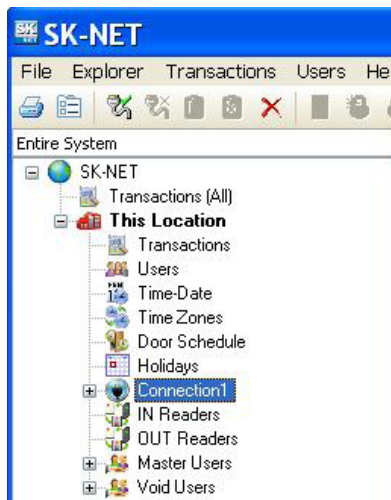
Copyright © Lantronix, Inc. 2007-2014. All rights reserved.

2. Click on the Network Name you want to connect to. If unavailable, enter the **Network Name** in the provided field, or click **Scan** and click on the **Network Name**

3. If security field appears, enter the Password of the Wireless Network
4. Click Apply and then OK to accept the warning prompt
5. Click Submit, then Accept the warning prompt again to make changes permanent

SK-NET CONFIGURATION

1. Right click on Connection 1 and select properties



2. Select the Connection tab
3. Connect Using = Select LAN Internet (TCP/IP)
4. Baudrate = select 38400
5. Host IP Address = enter the Static IP Address you set up on the Wi-Fi module
6. Host Port = enter 10002
7. Select Apply and then click on Connect to establish a connection

INSTRUCTION TO THE USER
xPico Wi-Fi FCC ID number: R68XPICOW

This equipment has been tested and found to comply with the limits for a Class B digital device, pursuant to Part 15 of the FCC Rules. These limits are designed to provide reasonable protection against harmful interference in a residential installation. This equipment generates, uses, and can radiate radio frequency energy and, if not installed and used in accordance with the instructions, may cause harmful interference to radio communications. However, there is no guarantee that interference will not occur in a particular installation. If this equipment does cause harmful interference to radio or television reception, which can be determined by turning the equipment off and on, the user is encouraged to try to correct the interference by one of the following measures:

1. Reorient or relocate the receiving antenna.
2. Increase the separation between the equipment and receiver.
3. Connect the equipment into an outlet on a circuit different from that to which the receiver is connected.
4. Consult the dealer or an experienced radio/TV technician for help.

This device complies with Part 15 of the FCC Rules. Operation is subject to the following two conditions: (1) This device may not cause harmful interference, and (2) this device must accept any interference received, including interference that may cause undesired operation



20301 NORDHOFF STREET • CHATSWORTH, CA 91311
PHONE (818) 882-0020 • FAX (818) 882-7052
TOLL-FREE (800) 891-0020
www.securakey.com • mail@securakey.com