

# Garage Door Openers



Safety and Synergy  
Through Technology

# MOVING

As a leading manufacturer of door opener and control systems, our mission is to equip doors with Marantec openers and to make them as safe and convenient as possible using the very latest technology.

## Manufacturing innovations since 1957

For over 60 years, we have been developing and producing the most innovative automatic garage door openers, access control systems, swing and sliding gates, industrial parking barriers as well as related accessories at our headquarters in Germany. Our extensive experience and market knowledge enable us to design and market products that provide value to our customers and reduce operating costs.

## Door opener technology made in Germany

All of the technologies and components for our openers are consistently developed by Marantec engineers from start to finish. They are subsequently manufactured in our own specialized production facilities in Germany. The result is one of the safest opener systems in the world.







## Quality assured

Extensive quality testing is conducted on all Marantec garage door openers on all types of garage doors in our test laboratory which ensure that you will be able to enjoy your opener for many years to come. And because our openers are of extraordinary high quality, our Synergy 270, 280 and Synergy 370, 380 openers all come with a limited lifetime warranty on most components.\*

## Certified safety

All of our openers are certified by recognized independent global safety certification organizations during development and manufacturing. They consequently meet all of the statutory standards such as the Underwriter Laboratories (UL) for industrial and commercial garage doors and gates. Our company is also ISO 9001 certified.

\*Applies to motor assembly, gear assembly and rail system



# TRUST

## Safety creates trust.

Trust is the foundation for security and a sense of well-being.

Marantec garage door openers protect people, property and provide security. They are highly tamper-resistant and can be used on most types of residential garage doors. Easy-to-read LCD diagnostic display provides detailed operational information, simplifies the setup process and allows for customized settings.



## Security



### Break-in protection

Our openers are equipped with mechanisms that will protect your door from being opened by an unauthorized person. These mechanisms are: The natural self-locking mechanism of the drive unit and our release system, which requires the release cord to be pulled away from the garage door, thereby helping to prevent garage door break-ins involving the operator trolley system.





**Sensitive**

**Dependable**



The desire  
for  
safety



**Patented force limitation\***

Our openers are highly sensitive to obstacles. If the door touches an object, even just lightly, it will stop immediately and reverse itself, opening the door and freeing the object. This helps provide an extra layer of safety and protection for people, animals and personal items.

\*Patent No. EP0771923B2



**Additional safety provided by photo eyes**

Photo eyes monitor the area around the garage door and stop the opener immediately if there is an object in the way that interrupts the beam of light. Two LED indicator lights inform the owner whether the photo eyes are correctly aligned and free of dust, dirt and debris.



# EASE

**Synergy brings peace of mind, ease and flexibility.**

Marantec openers are simple to operate at the touch of a button. Marantec provides comprehensive customer service support—we are quick to respond if you need assistance.



**Flexible**



### **Remote control transmitters**

Proven by design, Marantec hand-held remote controls continue the tradition of multi-bit encryption, providing the utmost security, ease of programming and excellent transmitting range. By offering an operating frequency of 315MHz, Marantec maintains HomeLink® compatibility, as well as backwards functionality with legacy remote controls.





**Ultra-Quiet**

**Fast**

The desire  
for  
comfort



**Quiet Operation**

Marantec openers are ultra-quiet. We use DC motor technology to ensure quiet operation. All our opener functions, seamlessly interact with one another to guarantee smooth, long-lasting operation.



**Fast Operation**

To make sure you do not have to wait too long, and to minimize heat loss from your garage, our openers are designed to open or close garage doors rapidly, in as little as 9 seconds.

# Garage door openers

## Synergy 370, 380

Built to impress: The Synergy 300 Series offers a high-gloss impact-resistant white exterior, powerful ultra-quiet DC motor, modern LED light system, pre-tensioned and easy-to-install rail kit, high speed opening action, extremely low energy consumption and convenient operating functions.



The right **opener for the right door**

### Ultra fast

**Synergy 370: 850N, 3/4+ HPCS™\***

Our most popular and fastest door opener—opens or closes doors in as little as 9 seconds. Ideal for insulated doors and many other garage door types.

### The workhorse

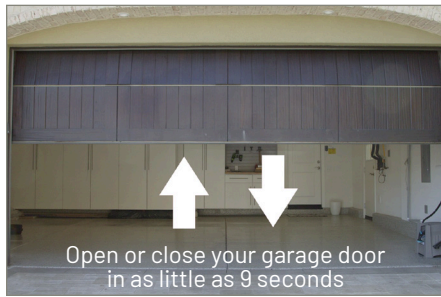
**Synergy 380: 1,100N, 1.1 HPCS™**

Our most powerful door opener. For carriage-house, wind-loaded or heavy glass garage doors.



\*HPCS = Horse Power Comparable in Strength





**Power and speed redefined**

Strong, quiet and powerful, our garage door openers are built with long-lasting DC motors. Soft-start/soft-stop capability helps reduce wear and tear on your opener and your garage door, helping to extend the life. The speed function operates the door at high speed, in both opening and closing directions. The benefits are faster entry and exit with less energy and heat loss from the garage.



**Integrated LED's**

The LED lights on the 300 Series provide 1,100 lumens and are designed to light your garage for maximum visibility. The length of the light on-time can be adjusted from between 2 seconds to over 4 minutes. Our LED's can also be switched on and off easily with your Marantec remote control or interior wall control. Our LED's provides up to 30,000 hours of service life with energy costs as little as \$3 a year.



**HomeLink® Compatible**

Marantec garage door openers are HomeLink compatible and all Marantec garage door openers use a secure multi-bit code technology that allows you to program an unlimited amount of Marantec remote controls.



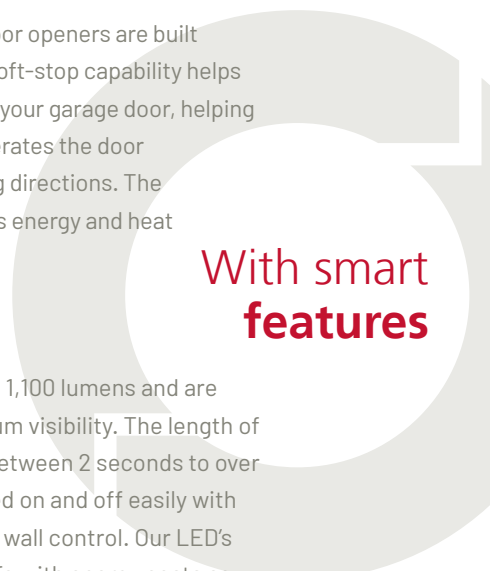
**Limited Lifetime Warranty**

For our 300 Series, we offer a limited lifetime, hassle-free warranty on motors, gears and rail systems and up to an 8 year warranty on parts and 1 year warranty on accessories.



**Battery Backup System**

Marantec's Battery Backup System is compatible with all Synergy operators and allows illuminated garage door operation during power outages. All Marantec openers sold in California (and available everywhere else) are equipped with an integrated Battery Backup System in compliance with requirements of California's SB-969 and Health and Safety Codes 19890 and 19892.



With smart features

# Garage door openers

## Synergy 270, 280

Proven performance. Now in its 5th generation and going strong. The Synergy 200 Series is systematically refined with the latest technology: Ultra-quiet and powerful DC motor, LED lights, door-friendly control system, sensitive obstacle detection system, pre-tensioned and easy-to-install rail kit, extremely low energy consumption and convenient operating functions, with simple operation.



The right **opener for the right door**

### Performance oriented

**Synergy 270: 750N, 3/4 HPCS™\***

Robust and versatile, Smart German design. Reliable and cutting-edge performance. Ideal for most types of residential garage doors.

### Built to impress

**Synergy 280: 1,000N, 1 HPCS™**

Power and performance. Designed for use with most garage door types, including wide double garage doors, carriage house or wind-loaded doors.







### Power and speed redefined

Strong, quiet and powerful, our garage door openers are built with long-lasting DC motors. Soft-start/soft-stop capability helps reduce wear and tear on your opener and your garage door, helping to extend the life. The speed function operates the door at high speed, in both opening and closing directions. The benefits are faster entry and exit with less energy and heat loss from the garage.



### Integrated LED's

Our LED lights on the 200 Series provide 756 lumens and are designed to light your garage for maximum visibility. The length of the lights "on-time" can be adjusted from between 2 seconds to over 4 minutes. Our LED's can also be switched on and off easily with your Marantec remote control or interior wall control. Our LED's provides up to 30,000 hours of service life with energy costs as little as \$3 a year.



### HomeLink® Compatible

Marantec garage door openers are HomeLink compatible and all Marantec garage door openers use a secure multi-bit code technology that allows you to program an unlimited amount of Marantec remote controls.



### Limited Lifetime Warranty

Strong design, engineering, and build quality, so much so that we stand behind our products. For our 200 collection, we offer a limited lifetime, hassle-free warranty on motors, gears and rail systems and up to a 4 year warranty on parts and 1 year warranty on accessories.



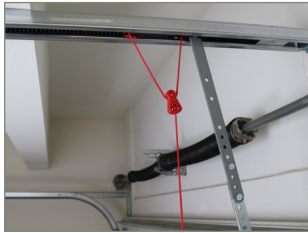
### Battery Backup System

Marantec's Battery Backup System is compatible with all Synergy operators and allows illuminated garage door operation during power outages. All Marantec openers sold in California (and available everywhere else) are equipped with an integrated Battery Backup System in compliance with requirements of California's SB-969 and Health and Safety Codes 19890 and 19892.

With smart  
features

# The right opener for every **garage door**

Openers for light or heavy, small or large, new and old garage doors. We have the right opener for every door and all types of use: Opener + Rail + Operating Accessories.



## Emergency release

The emergency release allows you to safely open and close your door in the event of a power outage. Pulling on the release towards the garage door opener (a security feature) will make the door disconnect from the opener, after which it can be manually operated.

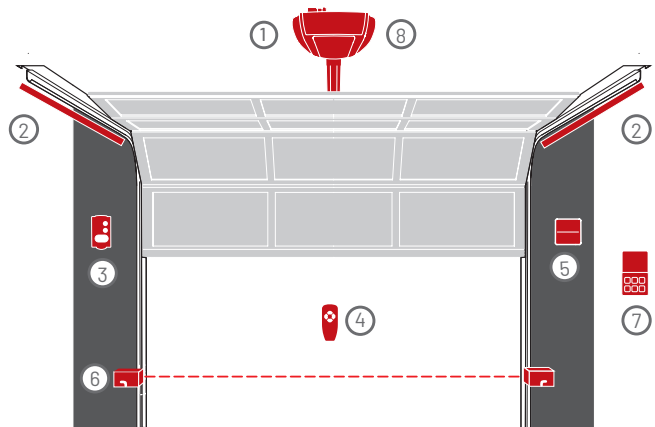


## Pre-tensioned rails

All of our opener rails are pre-tensioned, completely maintenance-free, install in seconds and extremely quiet because of our super-strong proprietary steel-cable infused, polymer belt drive system.

## Flexible accessories for every door

- ① Garage door opener, including rail
- ② 2 x 60 in. LED light strips (2,200 lumens)
- ③ Wall Control Station
- ④ Remote control transmitter
- ⑤ 2-button Wireless Wall Station
- ⑥ Photo eyes
- ⑦ Wireless Keyless Entry
- ⑧ Battery backup (300 Series internal/200 Series attached)





# All technical data at a glance

	Synergy 270	Synergy 280	Synergy 370	Synergy 380
HPCS* max. push and pull force/ (N=Newtons) <small>*HPCS = Horse Power Comparable in Strength</small>	750N	1,000N	850N	1,100N
Travel speed (inch/second max.)	6.3	6.3	9.3	7.1
Power consumption / standby (max. Watts)	4.0	4.0	4.0	4.0
Lumens	756	756	1,100	1,100
Battery backup (optional) Included in all models sold in California.	Compatible	Compatible	Compatible	Compatible
Door Height (max. feet)	Up to 12 ft.	Up to 12 ft.	Up to 14 ft.	Up to 14 ft.
1 Car Garage	Yes	Yes	Yes	Yes
2 Car Garage	Yes	Yes	Yes	Yes
3 Car Garage	Yes	Yes	Yes	Yes
Remote	2-button	2-button	4-button	4-button
Wall Control Station	Included	Included	Included	Included
Wireless Keyless Entry (exterior keypad)	Optional	Optional	Optional	Optional
Battery backup	Included in CA. Optional elsewhere	Included in CA. Optional elsewhere	Included in CA. Optional elsewhere	Included in CA. Optional elsewhere
Wireless Wall Station (2-button interior remote)	Optional	Optional	Optional	Optional
Automatic Time to Close	Optional	Optional	Optional	Optional
LED Light Strips	Optional	Optional	Optional	Optional
Warranty	Limited Lifetime*	Limited Lifetime*	Limited Lifetime*	Limited Lifetime*

\*Applies to motor assembly, gear assembly and rail system.



### Remote control transmitters

Marantec remotes control up to 4 different garage door openers with an unlimited number of remotes. Extremely secure multi-bit code only compatible with Marantec garage door openers using 315 MHz frequency. Emits strong, long-range secure signals to minimize interference and improve overall performance. Remote accessories available: wall mount, key ring and visor clip.



### Battery backup

Marantec's Battery Backup System is compatible with all Synergy operators and allows access in and out of your garage during power outages. All Marantec openers sold in California (and available everywhere else) are equipped with an integrated Battery Backup System in compliance with requirements of California's SB969 and Health and Safety Codes 19890 and 19892.



### Photo eyes

Marantec's photo eyes with UV filters block sunlight making the sensors capable of operating in direct sunlight, with glares, and shadows. They offer proper operation at all times, any time of the day, regardless of sun exposure. Rugged and durable metal housing extends the life and safe use of the sensors for years to come.



### Integrated LEDs

Marantec LED lighting have a lifespan of over 30,000 hours and are 80% more efficient than incandescent light bulbs. Each 300 series openers provide 1,100 lumens. Each 200 series openers provide 756 lumens. LED lighting is time controlled and programmable.



### 2-Button Wireless Wall Station

Marantec's 2-button Wireless Wall Station opens your garage without a key or remote. Programmed with secure multi-bit code technology, the Wireless Wall Station is only compatible with Marantec Garage Door Openers operating on a 315 MHz frequency. Offering easy setup & installation, the Wireless Wall Station can be installed almost anywhere.



**Synergy 300 Series**

Synergy 300 Series



Synergy 370



Synergy 380

Marantec Synergy garage door openers offer a full line of openers and accessories that work with most types of residential garage doors from carriage-house, to wind-loaded doors and heavy glass doors.

Synergy 300 Included Accessories



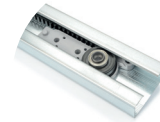
4-Button



Wall Control Station



Photo Eyes



Pre-tensioned Rail

**Synergy 200 Series**

Synergy 200 Series



Synergy 270



Synergy 280

Synergy 200 Included Accessories



2-Button



Wall Control Station



Photo Eyes



Pre-tensioned Rail

**Accessories**

Remote Controls



4-Button White



4-Button Grey



2-Button Grey



2-Button Micro



Wireless Keyless Entry

Available Accessories



Wall Control Station



2-Button Wireless Wall Station



Photo Eyes



Battery Backup



LED Light Strip



Automatic Time to Close



## Global Footprint

Safety, comfort and performance for the people. More than 500 employees serving customers in over 70 countries worldwide stand for this message in development, production and sales of innovative and trend-setting control and access systems.

[www.marantecamerica.com](http://www.marantecamerica.com)

Marantec America Corporation  
5705 Centerpoint Court  
Gurnee, IL 60031

 +1 847-478-1500 Toll free +1 888-622-2489  +1 847-510-0700

No part of this brochure may be reproduced without our written prior permission.  
Subject to change without notice. Please note that the openers and technical equipment shown in this brochure do not always represent the standard items included with a product.