

GSD (LOGIC 5.0) GEARHEAD SLIDE DOOR OPERATOR

SECTION 08 71 13



KEY FEATURES

| | |
|--|---|
| STANDARD APPLICATION | Recommended for single and bi-parting sliding doors in heavy-duty, high-cycle commercial applications |
| RATED DUTY CYCLE | Heavy-duty: Up to 25 cycles/hour and up to 125 cycles/day when distributed over a minimum of 8 hours |
| OPERATOR SPEED | 11-12 Inches per second |
| LIMIT SETTINGS | Mechanical |
| EMERGENCY DISCONNECT FOR MANUAL OPERATION | Floor-level emergency release sash chain |
| EMERGENCY DISCONNECT WITH AUTO-RECONNECT | Reconnects when tension is removed from emergency release sash chain |
| PROGRAMMING | Control function selector dial/tactile buttons |
| CIRCUIT BOARD | Solid-state Logic 5.0 circuit board |
| TIMER-TO-CLOSE | Programmable in 1 second and 15 second increments up to 68 minutes, standard |
| CLUTCH | Standard adjustable friction clutch |
| MID-STOP | Programmable |
| RUN TIME PROTECTION | Maximum run timer |
| MOTR REVERSE ACTION PROTECTION | Delay-on-reverse circuit |
| MOTOR OPERATOR WALL CONTROL | 3-Button Control Station with Maintenance Alert System (MAS) |
| TROLLEY TRACK | Dual L-rail trolley track |
| PUSH BUTTON STATION | 3-Push button station (Open/Close/Stop) |

SPECIFICATIONS

| | |
|-----------------------------|--|
| RADIO RECEIVER | Security+ 2.0® technology standard on-board with tri-band frequency; accepts up to (90) single-button or (30) 3-button remote controls plus up to (30) wireless keypads or an unlimited number of DIP switch remotes |
| VOLTAGE CONNECTIONS | Single-phase: 115V/230V dual voltage; 3-phase: 208V/230V/460V dual voltage; 3-phase: 575V single voltage |
| CONTROL CIRCUIT | 5VDC NEC class 2 |
| DRIVE REDUCTION | 10:1 first-stage using heavy-duty gears running in oil bath; cast iron housing; #41 chain second stage; #41 output chain on trolley |
| BEARINGS/BUSHINGS | Sealed roller bearings in gear reducer; flange-mount industrial ball bearings on drive shaft |
| BRAKE | Standard |
| CONSTRUCTION | NEMA 1 type electrical box; heavy-duty 11-gauge steel frame with durable powder coat finish; all reduction sprockets drilled and pinned to shafts |
| TROLLEY ROLLER CHAIN | #41 standard |
| WARRANTY | 2 years |

INSTALLATION FEATURES

| | |
|---|---|
| MAXIMUM DOOR HEIGHT | 22 feet standard with additional capability* |
| MAXIMUM DOOR WIDTH | 24 feet standard with additional capability; double for bi-part* |
| MAXIMUM ALLOWABLE SQUARE FOOTAGE | 620 square feet; double for bi-part |
| INTERNET CONNECTIVITY | myQ® Technology enables remote monitoring and control of the commercial door via a smart phone, tablet, or computer** |

This commercial door operator must feature constant pressure to close or be equipped with an external monitored entrapment protection device. Use only LiftMaster monitored entrapment protection devices itemized on the accessory page of the operators installation manual to meet UL 325 requirements.

* Contact us at Specs@LiftMaster.com for additional capabilities.

**LiftMaster Internet Gateway and myQ app required.

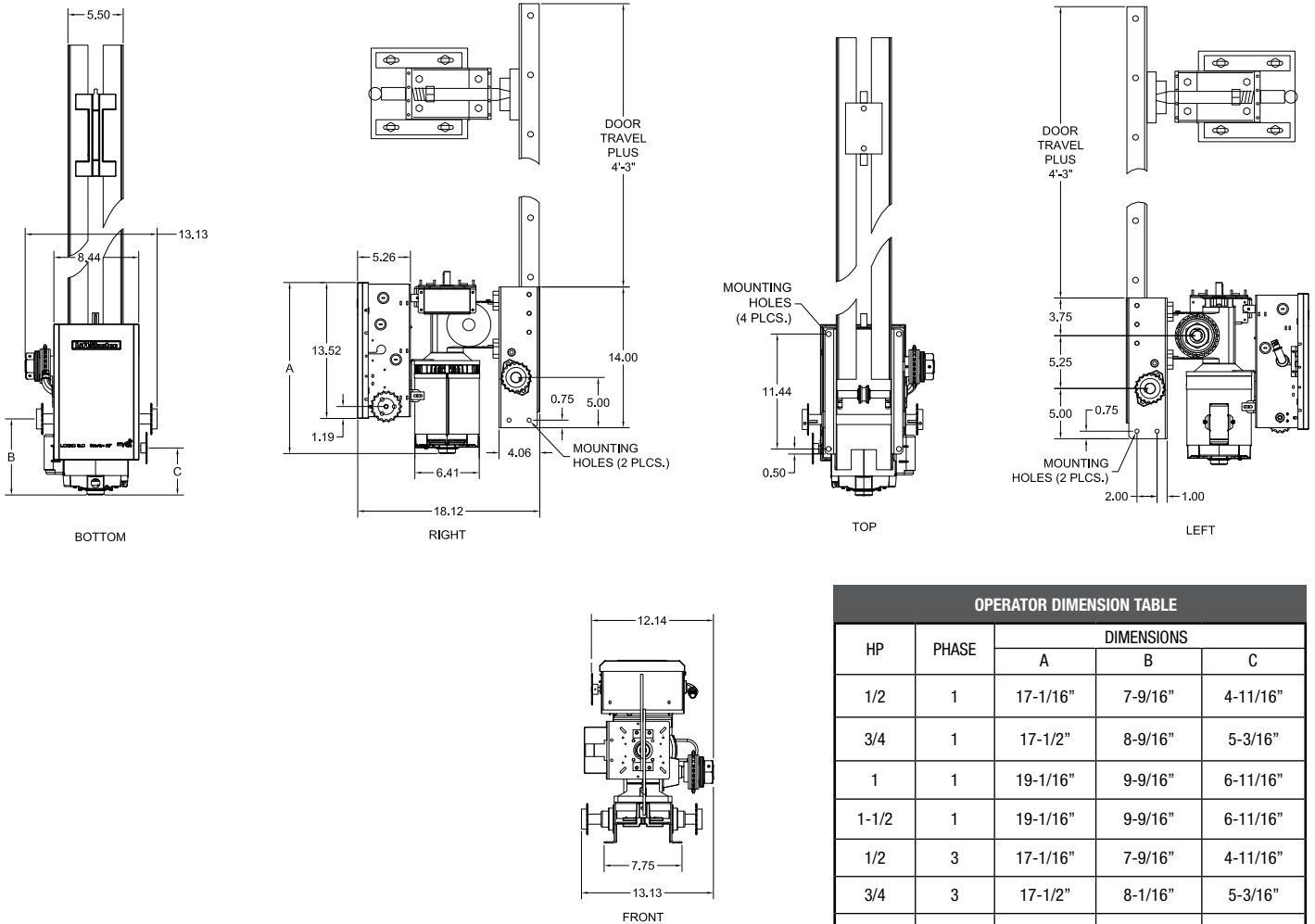
DATA SHEET
GEARHEAD SLIDE DOOR OPERATOR

LiftMaster

GSD (LOGIC 5.0) GEARHEAD SLIDE DOOR OPERATOR

SECTION 08 71 13

DIMENSIONS



| OPERATOR DIMENSION TABLE | | | | |
|--------------------------|-------|------------|----------|----------|
| HP | PHASE | DIMENSIONS | | |
| | | A | B | C |
| 1/2 | 1 | 17-1/16" | 7-9/16" | 4-11/16" |
| 3/4 | 1 | 17-1/2" | 8-9/16" | 5-3/16" |
| 1 | 1 | 19-1/16" | 9-9/16" | 6-11/16" |
| 1-1/2 | 1 | 19-1/16" | 9-9/16" | 6-11/16" |
| 1/2 | 3 | 17-1/16" | 7-9/16" | 4-11/16" |
| 3/4 | 3 | 17-1/2" | 8-1/16" | 5-3/16" |
| 1 | 3 | 18-1/16" | 8-9/16" | 5-11/16" |
| 2 | 3 | 19-1/2" | 10-1/16" | 7-3/16" |

Notes:

1. Dimensions A, B & C may vary per motor manufacturer specification revisions and special modifications to the operator.

CAPACITY

| DOOR SIZE SELECTION GUIDE | | |
|---------------------------|----------------------------|-----------------------------|
| HP | Maximum Door Weight (lbs.) | Maximum Door Area (sq. ft.) |
| 1/2 | 1400 | 300 |
| 3/4 | 2200 | 420 |
| 1 | 2800 | 520 |
| 1-1/2 | 3400 | 620 |

On steel insulated doors, a 24-gauge back panel is assumed.
 If a heavier back panel is supplied, use the next higher HP rating.
 Recommended max duty cycles: 25 per hour, in excess of 90 per day.