

DHJ (LOGIC 5.0) DOOR LOCK HOIST/JACKSHAFT OPERATOR

SECTION 08 71 13



KEY FEATURES

STANDARD APPLICATION

Recommended for lighter rolling steel doors/grilles and high or vertical-lift sectional overhead doors in standard duty-cycle commercial applications where a manual hoist is required; door lock sensor is ideal for shopping mall grille applications

RATED DUTY CYCLE

Standard-duty: Up to 25 cycles/hour and up to 90 cycles/day (using continuous-rated motor)

OPERATOR SPEED

8-9 Inches per second

LIMIT SETTINGS

Mechanical

INTERNAL DOOR LOCK SENSOR

Eliminates jamming and damage to door and operator if door is opened when locked

EMERGENCY DISCONNECT FOR MANUAL OPERATION

Floor-level emergency release sash chain

EMERGENCY DISCONNECT WITH AUTO-RECONNECT

Reconnects when tension is removed from emergency release sash chain

PROGRAMMING

Control function selector dial/tactile buttons

CIRCUIT BOARD

Solid-state Logic 5.0 circuit board

TIMER-TO-CLOSE

Programmable in 1 second and 15 second increments up to 68 minutes, standard

CLUTCH

Standard adjustable friction clutch

MID-STOP

Programmable

RUN TIME PROTECTION

Maximum run timer

MOTOR REVERSE ACTION PROTECTION

Delay-on-reverse circuit

MOTOR OPERATOR WALL CONTROL

3-Button Control Station with Maintenance Alert System (MAS)

PUSH BUTTON STATION

3-Push button station (Open/Close/Stop)

SPECIFICATIONS

RADIO RECEIVER

Security+ 2.0® technology standard on-board with tri-band frequency; accepts up to (90) single-button or (30) 3-button remote controls plus up to (30) wireless keypads or an unlimited number of DIP switch remotes

VOLTAGE CONNECTIONS

Single-phase: 115V/230V dual voltage; 3-phase: 208V/230V/460V dual voltage; 3-phase: 575V single voltage

CONTROL CIRCUIT

5VDC NEC class 2

DRIVE REDUCTION

Belt/chain & pulley; first-stage heavy-duty 5L V-belt; second-third-fourth stages #48 chain; #50 output sprocket chain

BEARINGS/BUSHINGS

Industrial ball bearings on a 1" output shaft; heavy-duty oil-filled bushings on reduction shafts

BRAKE

Standard on 3/4 operators; optional on 1/2 HP

CONSTRUCTION

NEMA 1 type electrical box; heavy-duty 11-gauge steel frame with durable powder coat finish; all reduction sprockets drilled and pinned to shafts

WARRANTY

2 years

INSTALLATION FEATURES

MAXIMUM DOOR HEIGHT

26 feet standard with additional capability*

MAXIMUM DOOR WIDTH

22 feet standard with additional capability*

MAXIMUM ALLOWABLE SQUARE FOOTAGE

560 square feet

INTERNET CONNECTIVITY

myQ® Technology enables remote monitoring and control of the commercial door via a smart phone, tablet, or computer**

This commercial door operator must feature constant pressure to close or be equipped with an external monitored entrapment protection device. Use only LiftMaster monitored entrapment protection devices itemized on the accessory page of the operators installation manual to meet UL 325 requirements.

* Contact us at Specs@LiftMaster.com for additional capabilities.

**LiftMaster Internet Gateway and myQ app required.

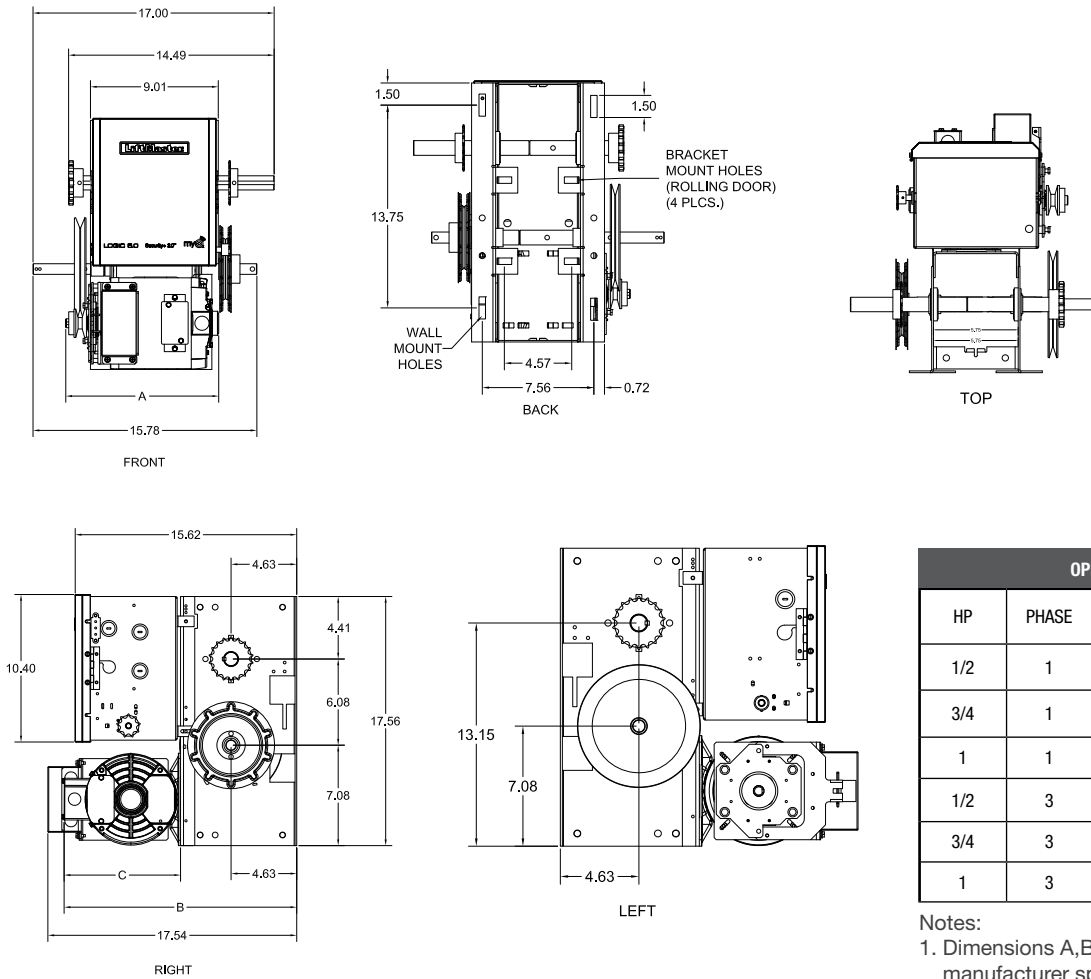
DATA SHEET
DOOR LOCK HOIST/JACKSHAFT
OPERATOR

LiftMaster

DHJ (LOGIC 5.0) DOOR LOCK HOIST/JACKSHAFT OPERATOR

SECTION 08 71 13

DIMENSIONS



OPERATOR DIMENSION TABLE				
HP	PHASE	DIMENSIONS		
		A	B	C
1/2	1	10-3/4"	16-13/32"	8-7/32"
3/4	1	11-9/32"	16-11/32"	8-5/32"
1	1	11-29/32"	17-1/16"	8-7/8"
1/2	3	11-5/16"	16-7/16"	8-3/16"
3/4	3	11-5/16"	16-13/32"	8-3/16"
1	3	11-5/16"	16-13/32"	8-3/16"

Notes:

1. Dimensions A, B & C may vary per motor manufacturer specification revisions and special modifications to the operator.

CAPACITY

MAXIMUM DOOR AREA (SQ. FT.)						
ROLLING	24 GA. STEEL	22 GA. STEEL	-	20 GA., 18 GA. STEEL	16 GA. STEEL	-
	ALUMINUM GRILLES	ALUMINUM DOORS	-	STEEL GRILLES	-	-
SECTIONAL	-	24 GA., 22 GA. STEEL	20 GA. STEEL	-	16 GA. STEEL	-
	FIBERGLASS	ALUMINUM DOORS	WOOD DOORS	-	-	-
	-	-	24 GA. STEEL INSULATED	-	20 GA. STEEL INSULATED	16 GA. STEEL INSULATED
HP	1/2	400	350	320	280	250
	3/4	560	500	450	380	325

On steel insulated doors, a 24-gauge back panel is assumed. If a heavier back panel is supplied, use the next higher HP rating. Recommended max duty cycles: 25 per hour, up to 90 per day.