

Discover the Difference

ASSA ABLOY

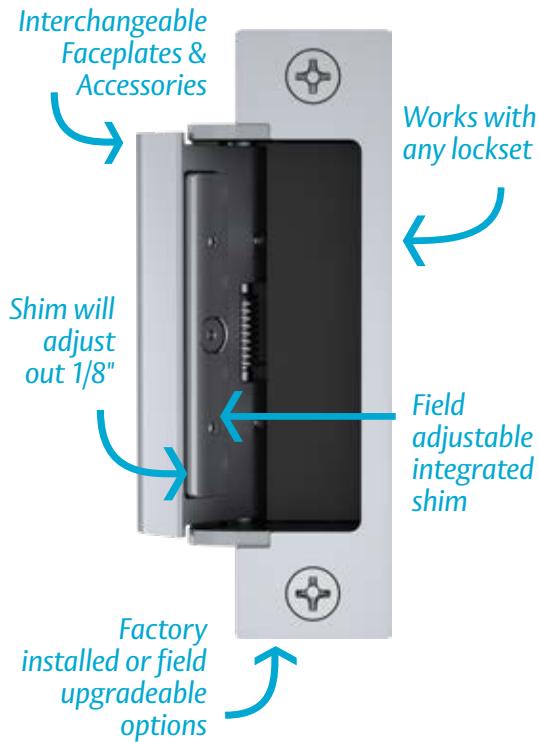
HES 1500 & 1600 Series Electric Strikes

The most advanced, modular electric strikes that work with every brand of cylindrical or mortise locks designed to work with a 4-7/8" strike plate.

The global leader in
door opening solutions



Dynamic | Flexible | Modular



HES 1500 & 1600 Series Electric Strikes

Specifications

- ANSI/BHMA A156.31, Grade 1
- UL 1034 burglary-resistant listed and suitable for outdoor use
- UL 294 listed
- RoHS compliant
- Holding force:
 - Static strength 1,500 lbs
- UL 10C fire-rated, 3 hour single door (fail secure only)
- UL 10C fire-rated, 1-1/2 hour double door (fail secure only)
- CAN/ULC-S104 fire door conformant
- NFPA-252 fire door compliant
- ASTM-E152 fire door compliant
- California Fire Marshal listed
- ANSI/SDI A250.13 windstorm resistant
- Florida Building Code approved TAS 201, 202, 203
- ANSI-ASTM E330
- 1500 – Strike body depth 1-3/8"
- 1600 – Strike body depth 1-5/8"
- Sustainability documentation

Electrical (DC Continuous Duty)

- Dual voltage 12/24 VDC/VAC
- 240 mA at 12 VDC/120 mA at 24 VDC
- PoE friendly

Features

- Available in 7 finishes
- Field adjustable integrated shim
- Interchangeable faceplates and accessories
- Fully finished faceplate, keeper, case and trim
- Trim enhancer included
- ElectroLynx™ plug-in connectors
- Non-handed
- Internally mounted solenoid
- Tamper resistant
- Stainless steel construction
- SecuriCare ten-year, no fault, no questions asked warranty

Options

- **LM** Lock monitor
- **DLM** Dual lock monitors
- **LMS*** Lock monitor and strike monitor
- **DLMS*** Dual lock monitors and strike monitor
- **OPT-1LM** Single lock monitor
- **OPT-1DLM** Dual lock monitors
- **1500-104-XXX** Lip extension trim adapter
- **1500-106-XXX** 4500 adapter and trim enhancer kit (finish to match)
- **1600-104-XXX** Lip extension trim adapter
- **1600-106-XXX** 1006 adapter and trim enhancer kit (finish to match)
- **HES-CUT-MTK** Metal Template Kit

*Factory installed option



Grade 1



SecuriCare Warranty



Mortise Locks with Deadbolt



Mortise Locks without Deadbolt



Cylindrical Locksets



Rim Exit Devices



Field Selectable (Fail secure / Fail safe)



Dual Voltage 12/24



PoE Friendly



Fire Rated



Windstorm Resistant









Outdoor Rated



Burglary Rated

Comparison Chart

Manufacturer	WITH DEADBOLT			WITHOUT DEADBOLT		
	HES 1600	HES 1006	Competitor #1	HES 1500	HES 4500	Competitor #2
Model						
Certifications & Listings						
UL 10C, 3 hour single door fire-rated	Y	Y	Y	Y	Y	Y
UL 10C, 1-1/2 hour doubled door fire-rated	Y	Y	N	Y	N	N
CAN4-S104 (ULC-S104) fire door conformant	Y	Y	Y	Y	Y	Y
UL 1034 burglary-resistant listed	Y	Y	Y	Y	Y	Y
UL 1034 burglary-resistant listed for outdoor use	Y	Y	N	Y	N	N
UL 294 (6th edition) listed	Y	Y	N	Y	Y	N
Environmental Product Declaration	Intended	Y	N	Intended	Intended	N
ANSI/BHMA A156.31, Grade 1	Y	Y	Y	Y	Y	Y
NFPA-252 fire door conformant	Y	Y	Y	Y	Y	Y
ASTM-E152 fire door conformant	Y	Y	Y	Y	Y	Y
ANSI/SDI 250.13 windstorm resistant	Y	Y	N	Y	N	N
ANSI-ASTM E330	Y	Y	N	Y	N	N
Florida Building Code approved TAS 201, 202, 203	Y	Y	N	Y	N	N
California Fire Marshal listed	Y	N	N	Y	Y	N
RoHS compliant	Y	Y	?	Y	Y	?
Patented design	Applied	Y	Applied	Applied	Y	Applied
Standard Features						
Accommodates cylindrical and mortise latchbolts	Y	Y	Y	Y	Y	Y
Accommodates all brands of mortise locks	Y	Y	Y	Y	N	Y
Accommodates 1" deadbolts	Y	Y	Y	N	N	N
Release and recapture 1" deadbolt	N	Y	N	N	N	N
Installs in fire listed 2" frame with 1/2" drywall	N	N	N	Y	Y	Y
Strike body depth	1-5/8"	1-11/16"	1-5/8"	1-3/8"	1-3/8"	1-3/8"
Strike cavity height	3-1/4"	3-1/4"	3-1/4"	3-1/4"	2-11/16"	3-1/4"
Tamper resistant, stainless steel construction	Y	Y	Y	Y	Y	Y
Static strength (lbs)	1500	3070	1500	1500	3000	3250 Factory Test
Dynamic strength (ft-lbs)	70	350	70	70	100	-
Endurance (cycles)	1M	1M	2M Factory Test	1M	1M	1M
Full finished face plate, keeper, case and trim	Y	N	N	Y	N	Y
Field selectable fail safe/fail secure	Y	N	Y	Y	Y	N
Non-handed	Y	Y	Y	Y	Y	Y
Horizontal adjustment	Integrated	Shims	Shims	Integrated	Shims	Shims
Plug-in connector	Y	Y	Y	Y	Y	Y
Trim enhancer included	Y	Y	Y	Y	Y	Y
Lip extension (sizes)	1/2"	1"	N	1/2"	N	1/4"
Lock monitor	Field Install*	Y	Field Install	Field Install*	Y	Y
Lock door position monitor	Factory Install	N	N	Factory Install*	N	N
Strike locked monitor	Y	Y	N	Y	Y	N
Metal template kit for easy installation	Y	Y	N	Y	Y	N
Frame type	All	All	All	All	All	All
Available finishes	7	7	1	7	7	6
Standard Electrical						
Dual voltage 12 or 24	Y	Y	Y	Y	Y	Y
AC or DC	Y	N	Y	Y	Y	Y
Current at 12 volts	0.24 A	0.45 A	0.38 A	0.24 A	0.24 A	0.24 A
Current at 24 volts	0.12 A	0.25 A	0.19 A	0.12 A	0.12 A	0.11 A
Continuous duty	Y	Y	Y	Y	Y	Y
PoE friendly (under 0.25 amps)	Y	N	Y	Y	Y	Y

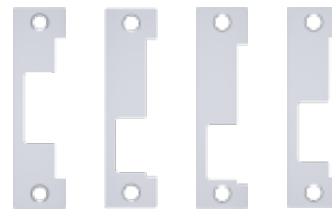
*Order non-standard option factory installed.

ASSA ABLOY is the global leader in door opening solutions, dedicated to satisfying end-user needs for security, safety and convenience

ASSA ABLOY

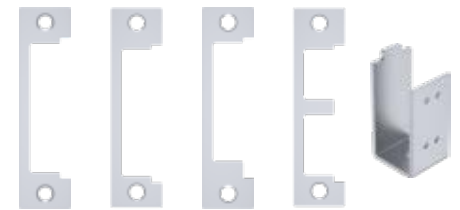


Interchangeable Faceplate Kits for Latchbolts and Deadbolts



1J 1K 1KD 1KM

1500 & 1600
1LB Faceplate Kit for
Latchbolts



1N 1ND 1NM 1NTD 1H Bracket

1600
1DB Faceplate Kit for
Deadbolts

How to Order

Series	Model	Finish*	Option (s)
1500	—	— 630	— LM
<i>Choose the electric strike series number</i>	<i>Specify to include select faceplates and hardware in the box</i>	<i>Choose finish number. Complete Pacs are only available in the 630 finish</i>	<i>Select options</i>
1500	C – 1500C	605 Bright Brass	LM Lock Monitor
1600	CS – 1600CS	606 Satin Brass	DLM Dual Lock Monitor
	CLB – 1600CLB	612 Satin Bronze	LMS Lock Monitor and Strike Monitor*
	CDB – 1600CDB	613 Bronze Toned	DLMS Dual Lock Monitors and Strike Monitor*
		613E Dark Oxidized Satin Bronze	OPT-1LM Single Lock Monitor
		629 Bright Stainless Steel	OPT-1DLM Dual Lock Monitors
		630 Satin Stainless Steel	
		BSP Black Suede Powder	

*Complete Pacs are only available in the 630 finish

ELECTRONIC SECURITY HARDWARE

HES | Securitron

USA

800.626.7590 | assaabloyesh.com | customerservice.esh@assaabloy.com

CANADA

800.461.3007 | assaabloydss.ca | cavau-sales@assaabloy.com

@assaabloyesh

ASSA ABLOY Electronic Security Hardware

Patent pending and/or patent www.assaabloydss.com/patents

ESH-HES-006-0318

Copyright © 2018, Hanchett Entry Systems, Inc., an ASSA ABLOY Group company. All rights reserved. Reproduction in whole or in part without the express written permission of Hanchett Entry Systems, Inc. is prohibited.