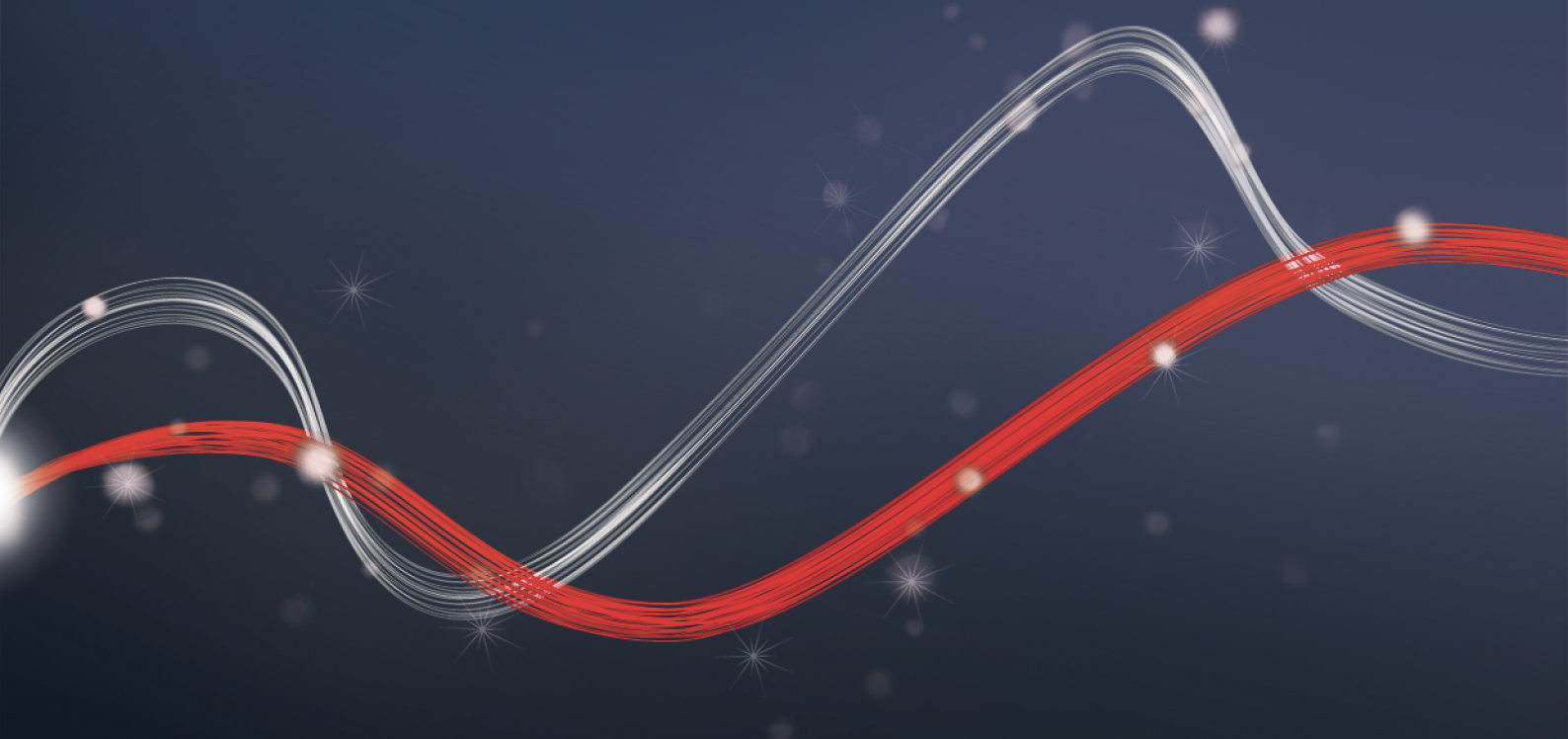




Be ahead



VIRGO SMART BT A





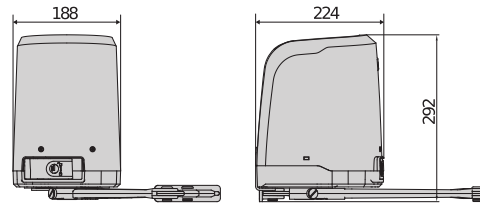
VIRGO SMART BT A



Electromechanical automation systems for swing gates



Empowered by
U-LINK



Electromechanical operator with articulated arm for residential use, for swing gate leaves of up to 2 metres and 200 kg. Control unit, limit switches and mechanical stops incorporated in operator. Ideal for any installation requirements, makes it easy to solve problems linked to large pillars thanks to the lever system.

PLUS

Installation also possible on pillars up to 235mm deep or with limited lateral space, thanks to the articulated arm and sliding arm. Installation also possible for pivoting shutters.

Thalia control unit in raised position for easy programming. Wide-ranging set of features available for customised installation.

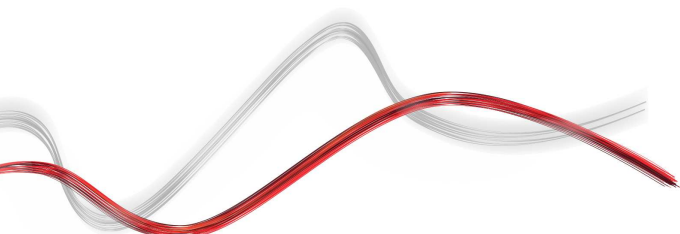
Exclusive U-Link, U-Control App and U-Base software protocol.

ADVANTAGES

Maximum installation flexibility

Easy programming and personalised installation

Comfort and control, even remotely





Electromechanical automation systems for swing gates



Empowered by
U-LINK

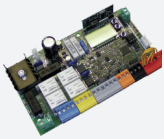
VIRGO SMART BT A

Code	Name			
P930129 00002	VIRGO SMART BT A 20		Irreversible electromechanical operator 24 V for swing gates weighing up to 200 kg and 2 m long. Limit switch Electromechanical.	
P930130 00002	VIRGO SMART BT A 20 SLAVE		Irreversible electromechanical operator 24 V for swing gates weighing up to 200 kg and 2 m long. Limit switch Electromechanical.	
R930150 00001	VIRGO SMART BT A 20 KIT INT		Complete kit 24 V for swing gates up to 200 kg in weight and 2 m in length. Limit switch Electromechanical.	
R930150 00002	VIRGO SMART BT A 20 KIT ITA		Complete kit 24 V for swing gates up to 200 kg in weight and 2 m in length. Limit switch Electromechanical.	
R930150 00004	VIRGO SMART BT A 20 KIT GERMANIA		Complete kit 24 V for swing gates up to 200 kg in weight and 2 m in length. Limit switch Electromechanical.	

THALIA: Control panel with display for one or two 24V electromechanical operators for swing gates.



THALIA - Built-In



- Control panel with display for one or two 24V electromechanical operators for swing gates
- Application: control panel with display for one or two 24V electromechanical operators for swing gates
- Board power supply: 230V single-phase
- Operators power supply: 24Vdc 180W max each operator
- Main features: new standard colour removable terminal blocks, simplified scenario-based programming with display and integrated dual-channel receiver, D-Track anti-crushing system, slowdown during opening and closing and electronic self-learning
- Main functions: automatic re-closing, fast closing, partial opening, deadman feature
- Compatibility: LIBRA C MA, LIBRA, LIBRA R, LIBRA MA R

	VIRGO SMART BT A 20	VIRGO SMART BT A 20 SLAVE
Control unit	THALIA	
Board power supply	230 V	
Motor voltage	24 V	24 V
Power input	110 W	110 W
Max. width of door/gate wing	2 m	2 m
Max. weight of door/gate wing	200 kg	200 kg
Maximum angle	120 °	120 °
Cycle time	14 s	14 s
Type of limit switch	Electromechanical	Electromechanical
Slowdown	Yes	Yes
Locking	Mechanical	Mechanical
Release	Personal key	Personal key
Impact reaction	Electronic torque limiter	Electronic torque limiter
Frequency of use	Semi intensive	Semi intensive
Protection rating	IP44	
Environmental conditions	-20 + 55 °C	



VIRGO SMART BT A



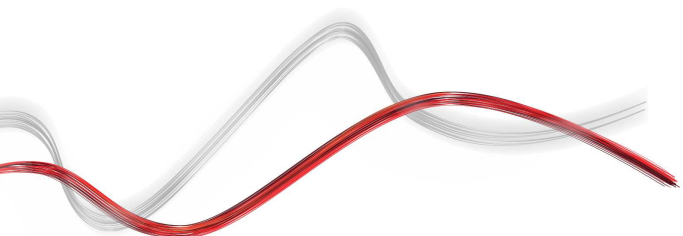
Electromechanical automation systems for swing gates



Empowered by
U-LINK

RECOMMENDED ACCESSORIES

	<p>N728052 - LAS</p> <p>new</p>		<p>P111775 - TFS</p> <p>new</p>
<p>VIRGO BT A slide lever.</p>		<p>Virgo Smart BT A 3-wire board KIT (1 Kit per engine).</p>	
	<p>N999735 - AAP</p> <p>new</p>		<p>N998600 - AMV</p> <p>new</p>
<p>VIRGO SMART BT A misaligned doors accessory.</p>		<p>Virgo Smart BT A 20 mechanical stop KIT.</p>	
	<p>N574039 - BOX</p>		<p>P125008 - VIRGO BAT</p>
<p>Wall-mounted safe for steel cable release and electric control.</p>		<p>Set of backup batteries for VIRGO.</p>	
	<p>D111761 - ME BT</p>		
<p>Control board for 24Vac solenoid lock for 24V automation systems.</p>			





Electromechanical automation systems for swing gates



Empowered by
U-LINK

What is U-Link?

The innovative technology that gives you new power

An exclusive Bft innovation: U-Link (Universal Link) is an exclusive Bft platform that allows the creation of technological ecosystems. In Home Automation Access, it allows communication with all the home access automation devices of any brand. So you save time and can control everything with ease, without any worries.

It is intuitive

Easy to install and use

It is scalable

Allows an unlimited number of devices to be added

It is flexible

Allows the creation of groups of interconnected products

It is practical

Works with or without a web connection

It is functional

Parameters can be controlled remotely via dedicated applications



Electromechanical automation systems for swing gates



Empowered by U-LINK

All in one scheme: discover this amazing technology

A unique platform **allowing the creation of technological ecosystems** offering a wide range of solutions for different sectors.

Thanks to the B-Eba cards and the Clonix U-Link receiver, this proprietary platform featured by Bft products adapts to any protocol and access automation product (even BFT, non-native U-Link or non-BFT products), and is used in various sectors. Each device thus becomes smart and can be interconnected with other systems, thanks to a language that becomes universal.

U-Base 2



Software to install and easily and comfortably carry out maintenance and identify any malfunction of U-link compatible operators.

U-SDK



U-SDK is the innovative application that can make Bft automation systems compatible and easily integrated with a BMS network for the supervision of buildings.



Magistro

An innovative and easy to install system for easily managing all home automation systems.



U-Control

U-Control is the application that helps the quick and easy integration of BFT automation systems in large building management systems.



Blue-Entry

Technology abreast of the times and attentive to daily needs: thanks to the use of U-link the house gate can now be opened with just your smartphone.



Clonix U-Link

Allows the connection of non-native U-Link products or non-Bft products to U-Link systems.

Bft operators, non-native U-Link products or a product belonging to other brands: can they be connected to U-Link? Yes, thanks to the Clonix receivers. Accessories that know no limits.



B-eba

A direct line with your operators.

B-eba expansion cards allow the connection of external devices, such as PCs, smartphones and tablets, to a Bft operator or Clonix receiver, or the connection of several Bft products in a U-Link network. These accessories integrate with U-Link technology and Bluetooth, Z-Wave, TCP/IP protocols, as well as the RS485 serial connection. A device that fully translates what Bft means for interconnectivity.

