

SUB UL

RANGE

Underground hydraulic operator for swing gates

SUB UL/CSA

P930012 00007 - SUB R UL/CSA DX

P930012 00008 - SUB R UL/CSA SX

P930010 00002 - SUB G UL/CSA

DX = Motor on right hand side of driveway from inside the property.

SX = Motor on left hand side of driveway from inside the property.



A MODEL FOR EVERY NEED

- Two versions available, for 125° and 180° opening angles.

SAFE USE

- Anti-crushing protection guaranteed by two adjustable bypass valves.

SIMPLER INSTALLATION

- Maintenance is carried out without any need to raise or disassemble the gate.
- The special foundation case makes it possible to remove the operator without taking off the gate leaf.

TECHNICAL FEATURES

	SUB R UL/CSA	SUB G UL/CSA
Control panels	RIGEL 6 UL/CSA (suggested)	RIGEL 6 UL/CSA (suggested)
Reversible/irreversible operator	irreversible	irreversible
Power supply	120 V 60 Hz single-phase	120 V 60 Hz single-phase
Absorbed power	0.33 hp (250W)	0.33 hp (250W)
Opening or closing time	14 s	33 s
Impact reaction	hydraulic clutch	hydraulic clutch
Lock	hydraulic opening/closing	hydraulic opening/closing
Manual release	fast key release	fast key release
Operating cycle	intensive use	intensive use
Environmental conditions	from 14°F to + 140°F	from 14°F to + 140°F
Degree of protection	IP67	IP67
Operator weight	48lb	53lb
Degree of opening	125°	180°



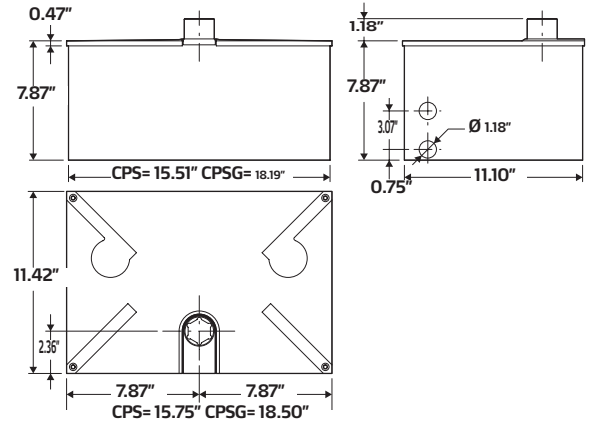
Be ahead

BFT Americas, Inc
1200 SW 35th Ave, Suite B
Boynton Beach, FL 33426

T: +1 561 995 8155
T: US. 1877 995 8155
info.bft@bft-usa.com
www.bftaccess.com
www.bft-usa.com

SUB UL

DIMENSIONS



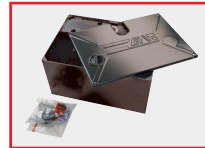
ACCESSORIES



N733066 00001 - CPS DX
Bearing foundation case for SUB operator (right hand). Maintenance can be carried out without disassembling the gate.



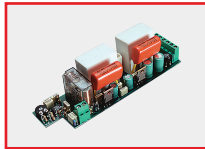
N733066 00002 - CPS SX
Bearing foundation case for SUB operator (left hand). Maintenance can be carried out without disassembling the gate.



N733092 - CPS G
Bearing foundation case for either left hand or right hand SUB G operator. Maintenance can be carried out without disassembling the gate.



P 111774 - RIGEL 6 HEATER



N734786 RIGEL 6 UL/CSA
Board only



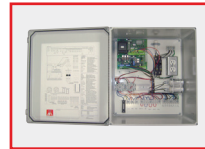
D610256 - CLS/82
Release key for Sub.



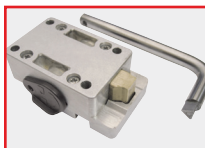
**113693 00001
113833 00001 - RIGEL 6 WITH CAPACITORS**
Fuse value: transformer 2A T, logic 1A T.



N734786 RIGEL 6 UL/CSA
Board only



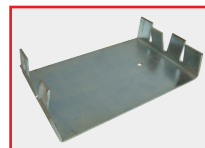
KERIG5C020U RIGEL 6 UL LE
16" x 18" large fiberglass enclosure. Pre-wired with Rigel6 loop sockets. 120 V outlet



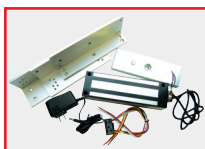
N733392
SCC Release for SUB for use with FCS Box only



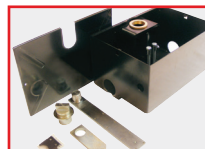
N728002 - BSC
SUB sliding arm.



D730177 - PFS
Foundation plate for SUB and SUB G.



BFT-1200MLKIT - 1200 LB MAGLOCK KIT
Magnetic lock Kit including bracket, relay and power supply.



N73348000001 FCS BOX
For use with SCC above ground release key



KERIG4C010U RIGEL 6 UL - SE
10"x12" large fiberglass enclosure. Pre-wired with Rigel6



Be ahead

BFT Americas, Inc
1200 SW 35th Ave, Suite B
Boynton Beach, FL 33426

T: +1 561 995 8155
T: US. 1877 995 8155
info.bft@bft-usa.com
www.bftaccess.com
www.bft-usa.com