

# LUX



## RANGE

Hydraulic operator for swing gates  
for very intensive use

REFERENCE	DESCRIPTION	VOLTAGE	LEAF WEIGHT	LEAF LENGTH
P935011 00013	LUX 2B UL/CSA	120 V	up to 660 lbs (~300 kg)	up to 10' (3 m)
P935039 00002	LUX FC 2B UL/CSA	120 V	up to 660 lbs (~300 kg)	up to 10' (3 m)
P935046 00004	LUX R 2B 2SN UL/CSA	120 V	up to 660 lbs (~300 kg)	up to 10' (3 m)
P935014 00010	LUX GV2B UL/CSA	120 V	up to 700 lbs (~320 kg)	up to 15' (4,5 m)

## TECHNICAL FEATURES

	LUX 2B UL/CSA	LUX FC 2B UL/ CSA
Control Panel	RIGEL 4 UL/CSA (suggested) or RIGEL5 no cap	RIGEL 4 UL/CSA (suggested) or RIGEL5 no cap
Reversible/Irreversible Operator	irreversible	irreversible
Power Supply	120 V, 60 Hz single-phase	120 V, 60 Hz single-phase
Absorbed Power	0.33 hp (250 W)	0.33 hp (250 W)
Thermal Protection	integrated	integrated
Rod Working Stroke	10.63" (270 mm)	11.02" (280 mm)
Rod Speed	0.55 ips (14 mm/s)	0.55 ips (14 mm/s)
Opening And Closing Time	17 s	17 s
Slowdown	none	none
Impact Reaction	hydraulic clutch	hydraulic clutch
Lock	hydraulic opening/closing	hydraulic opening/closing
Manual Release	release key	release key
Operating Cycle	intensive use	intensive use
Environmental Conditions	from 14°F (-10°C) to 140°F (+60°C)	from 14°F (-10°C) to 140°F (+60°C)
Degree Of Protection	IP57	IP57
Operator Weight	19 lbs (~8,7 kg)	19 lbs (~8,7 kg)
Dimensions	see drawing next page	see drawing next page
	<b>LUX R 2B 2SN UL/CSA</b>	<b>LUX GV 2B UL/CSA</b>
Control Panel	RIGEL 4 UL/CSA (suggested) or RIGEL5 with cap	RIGEL 4 UL/CSA (suggested) or RIGEL5 with cap
Reversible/Irreversible Operator	irreversible	irreversible
Power Supply	120 V, 60 Hz single-phase	120 V, 60 Hz single-phase
Absorbed Power	0.33 hp (250 W)	0.33 hp (250 W)
Thermal Protection	integrated	integrated
Rod Working Stroke	9.84" (250 mm)	15.35" (390 mm)
Rod Speed	0.55 ips (14 mm/s)	0.55 ips (14 mm/s)
Opening And Closing Time	17 s	17 s
Slowdown	on rod extension	none
Impact Reaction	hydraulic clutch	hydraulic clutch
Lock	hydraulic opening/closing	hydraulic opening/closing
Manual Release	release key	release key
Operating Cycle	intensive use	intensive use
Environmental Conditions	from 14°F (-10°C) to 140°F (+60°C)	from 14°F (-10°C) to 140°F (+60°C)
Degree Of Protection	IP57	IP57
Operator Weight	19 lbs (~8,7 kg)	19 lbs (~8,7 kg)
Dimensions	see drawing next page	see drawing next page



Be ahead

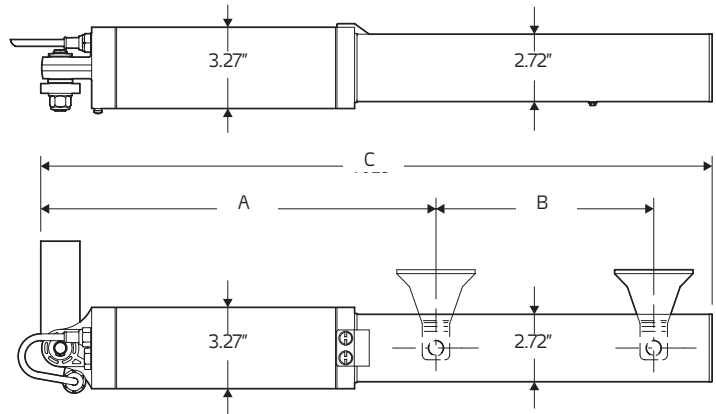
BFT Americas, Inc.  
6100 Broken Sound Parkway N.W.  
Boca Raton, FL 33487

T: +1 561 995 8155  
T: US. 1877 995 8155  
info.bft@bft-usa.com  
www.bftaccess.com  
www.bft-usa.com

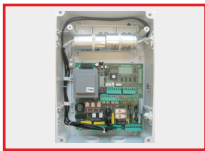
## DIMENSIONS

	A	B	C
LUX 2B UL/CSA	28.15"	10.53"	40.35"
LUX FC 2B UL/CSA	33.46"	* 11.02"	51.97"
LUX R 2B 2SN UL/CSA	27.95"	** 9.84"	41.34"
LUX GV 2B UL/CSA	33.46"	15.35"	51.18"

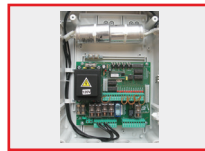
\* (+ spring compression) \*\* (+ slowdown)



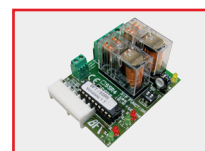
## ACCESSORIES



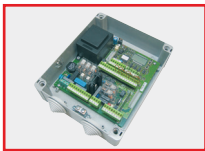
**KD113693 00001 - RIGEL 5 WITH CAPACITORS**  
Fuse value: transformer 2A T, logic 1A T.



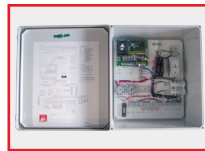
**D112326 00003 - RIGEL 4 UL/CSA WITH CAPACITORS**  
Fuse value: transformer 2A T, logic 1A T.



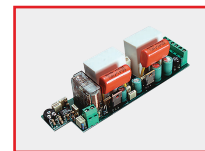
**D111704 - SSR5**  
Traffic light and preheating board for RIGEL 5 control panel.



**D113693 00001 RIGEL 5 120 V NO CAPACITORS**



**KERIG4C001U RIGEL 4**  
12" x14" large fiberglass enclosure. Pre-wired with Rigel4



**D113050/110 - SPL 120V**  
Pre-heating board for 1 or 2 LUX, SUB, P4,5-P7 and E5 operators. Can be fitted inside control panels RIGEL 4 UL/CSA, ALCOR UL/CSA.  
\$ 92.89



**KERIG5C020U RIGEL 5 LE**  
12" x14" large fiberglass enclosure. Pre-wired with Rigel5



**BFT-1200MLKIT - 1200 LB MAGLOCK KIT**  
Magnetic lock Kit including bracket, relay and power supply.



**P121024 - Q-BOX**  
Digital keypad with 10 channels and 100 combinations. Backlit



**D610180 - CLS/52**  
Release key for LUX, PHOBOS BT, PHOBOS BT L and DEIMOS BT.



**I101615 IDROLUX WINTER**  
Hydraulic oil for low temperatures, 2 lt bottle. Always use the same grade oil when refilling.



**D111904 Mitto 2 Transmitter:**  
12V Two channel 433Mhz rolling code remote control



Be ahead

BFT Americas, Inc.  
6100 Broken Sound Parkway N.W.  
Boca Raton, FL 33487

T: +1 561 995 8155  
T: US. 1877 995 8155  
info.bft@bft-usa.com  
www.bftaccess.com  
www.bft-usa.com