



SPARROW

VARIABLE MOUNT INDUSTRIAL MOTION SENSOR



LEARN MORE



click or scan

TECHNOLOGY



CERTIFICATIONS



DESCRIPTION

BEA's **SPARROW** is a highly flexible motion sensor designed to detect people and vehicles in a variety of industrial, security and pedestrian applications.

The **SPARROW**'s adjustable microwave antenna can be rotated ± 120 degrees to create different sensing fields, capable of detecting bi-directional traffic (two way), unidirectional (approach only) and unidirectional away (departure only).

The **SPARROW** is designed to operate in industrial or harsh environments. It is ideal for motion detection applications including vehicle sensing, access control and warning indication.



Flexible Mounting

Mounting height from 6 ½ feet to 20 feet

Adjustable For Optimal Detection

Ten sensor sensitivity settings can be applied to optimize detection



Weather Resistant

IP64 rated enclosure for industrial and harsh environments

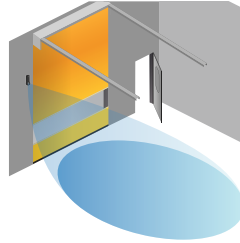
Customizable Settings

Immunity settings can be adjusted to reduce unwanted detections caused by rain, snow and header vibrations

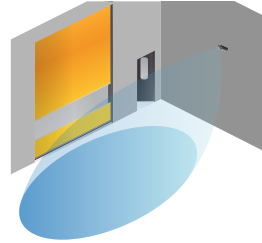
APPLICATIONS



Versatile Mounting Options



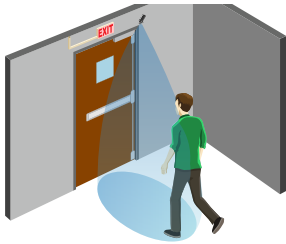
Industrial Doors



Side Mount / Multiple



Warning Indication



Request To Exit



Light Activation

TECHNICAL SPECIFICATIONS

Technology	Microwave Doppler Radar
Transmitter Frequency	24.150 GHz
Transmitter Radiated Power	< 20 dBm EIRP
Transmitter Power Density	< 5 mW / cm ²
Detection Mode	Motion
Tilt Angle	0 – 90° vertical; -120 – 120° lateral
Output	Relay (free of potential change-over contact)
Max. Contact Voltage	42 VAC – 60 VDC
Max. Contact Current	1 A (resistive)
Max. Switching Power	30 W (DC) / 60 VA (AC)
Minimum Detection Speed	2 in / s (measured in the sensor axis)
Frequency	50 – 60 Hz
Supply Voltage	12 – 24 VAC ±10% 12 – 24 VDC; 30% / -10%
Maximum Power Consumption	< 2 W
Mounting Height	6½ – 20'
Dimensions	5½" (L) × 2¼" (H) × 2½" (W)
Material	ABS
Color	Black
Weight	5.8 oz
Cable Length	30'
Temperature Range	-22 – 140 °F
Degree of Protection	IP64
Norm Conformity	R&TTE 1999 / 5 / EC; EMC 2004 / 108 / EC

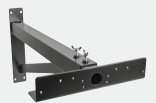
PRODUCT SERIES



10SPARROW
Variable mount
motion sensor



10REMOTE
BEA universal remote
control



10INDBRACKET
Industrial extension
bracket

DISCLAIMER Information is supplied upon the condition that the persons receiving it will make their own determination as to its suitability for their purposes prior to use. In no event will BEA be responsible for damages of any nature whatsoever resulting from the use of or reliance upon information from this document or the products to which the information refers. BEA has the right without liability to change descriptions and specifications at any time.