



# APPLICATION NOTE

## LZR-microscan Mounting Arm (10MICROSCANMOUNT)

This Application Note applies to the following BEA Products: **LZR-MICROSCAN**

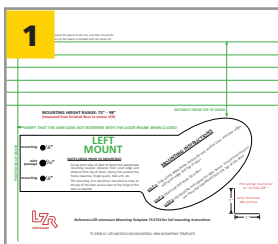
This mounting arm kit is intended for use with narrow-stile doors.

**INSTALLATION:** Refer to User's Guide (75.5753) and Mounting Template (75.5908) for installation instructions.

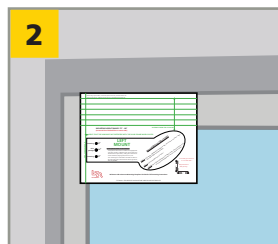
- > **SKIP SENSOR INSTALLATION** section!
- > Use the instructions provided here for sensor mounting when utilizing the Mounting Arm.

### KIT COMPONENTS:

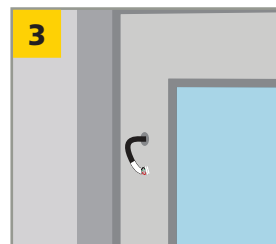
DESCRIPTION	PART NUMBER
APPLICATION NOTE	78.6017
MOUNTING ARM (left)	70.5594
MOUNTING ARM (right)	70.5595
MOUNTING TEMPLATE	75.5908
SECONDARY HARNESS	20.5319
HARDWARE KIT	50.5045 (x4)
	50.5284 (x2)
	50.5285 (x4)



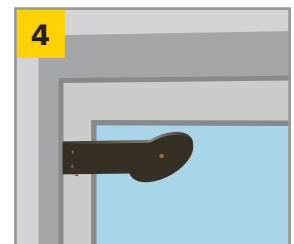
**BOTH SIDES OF DOOR:** Use Mounting Template to position the mounting arm correctly. Check for obstructions/clearance.



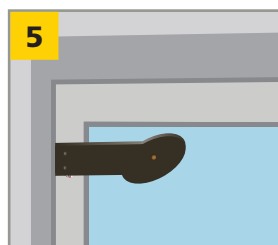
**BOTH SIDES OF DOOR:** Align Mounting Template, mark and drill holes.<sup>1</sup> Be sure to drill the correct size holes.



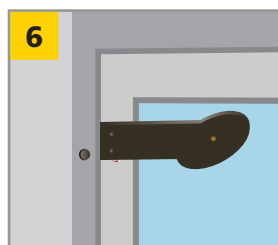
**BOTH SIDES OF DOOR:** Route the secondary sensor harness through the wire passage hole.



Run the secondary sensor harness through its wire passage hole in the mounting arm, and align the arm with the pre-drilled holes.



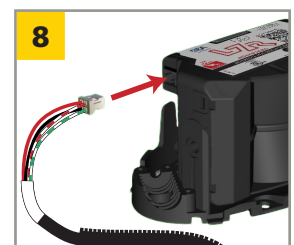
Secure the mounting arm with screws provided in the LZR-microscan kit. Cover the screws with the provided caps. Install the nylon spacer (Allen head end at the front of the arm), and adjust to fit for spacing between the arm and the door.<sup>2</sup>



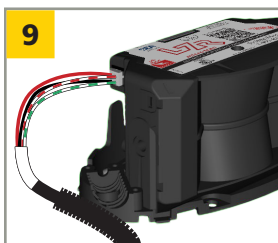
Drill 1/2" wire passage holes into jamb where Door Loops will be installed.



Remove Blank Endcap closest to door hinge on each sensor.



Route the main harness through Door Loop.



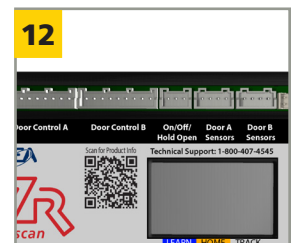
Plug the main harness into sensor at closest port.



Affix Door Loop to sensor with Pass-Through Endcap and three (3) screws.<sup>3</sup>



Mount the sensor to the arm. Plug the secondary sensor harness into the sensor. Route Primary Harness, and then install Door Loop and Cap onto the jamb.



Plug harness into hub port labeled **Door A Sensors**.

### NOTES:

1. Spacer required for applications with door hardware extending across width of door.
2. Nylon spacer may be trimmed if needed.
3. Pull extra Primary Sensor Harness slack through Door Loop (away from sensor) before tightening end cap screws.

**REPEAT STEPS 4 – 11 TO MOUNT THE REMAINING ARM ON THE OTHER SIDE OF THE DOOR**