

# APPLICATION NOTE

## LZR®-FLATSCAN SW STATIC MODE



This Application Note applies to the following BEA Products: LZR®-FLATSCAN SW

This procedure is intended for applications in which the location is stationary (e.g. window, security).

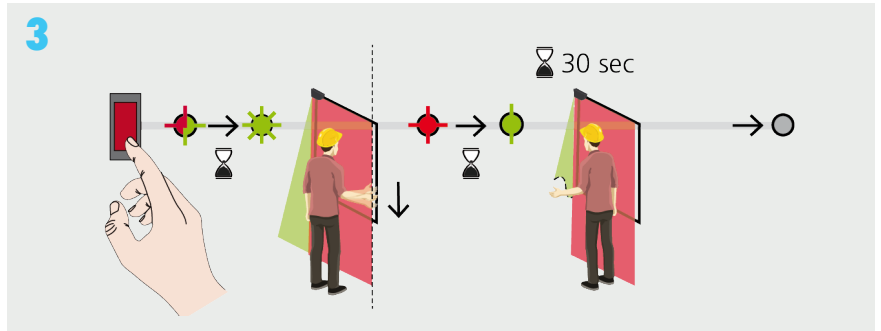
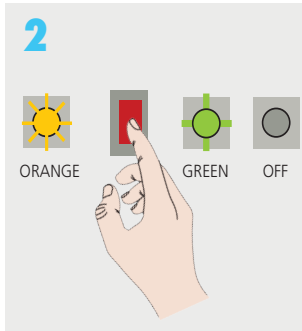
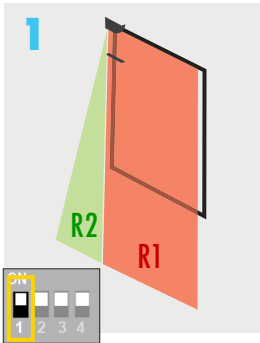
1. Change the DIP switch for the required field configuration.
2. Validate the new DIP switch setting.
3. Launch a Learn.

RELAY 1

### CONFIGURATION

### DIP SWITCH SETTING

### LEARN PROCESS



Set the DIP switch to ON.

After changing a DIP switch, the orange LED flashes. A long push on the push-button confirms the settings.

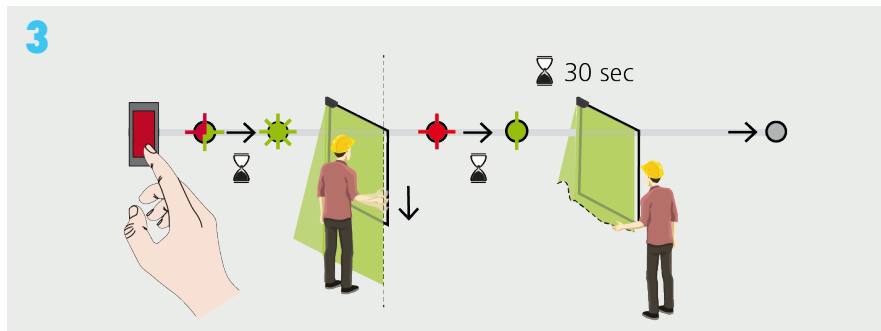
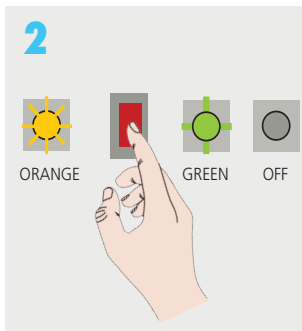
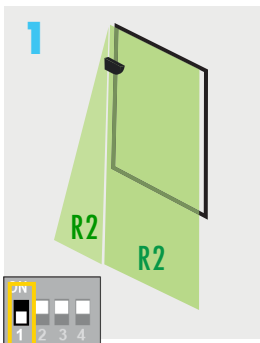
A custom shape can be traced in the pinch zone during the 30-second Learn process. To end this process sooner, push the button again.

RELAY 2

### CONFIGURATION

### DIP SWITCH SETTING

### LEARN PROCESS



Set the DIP switch to OFF.

After changing a DIP switch, the orange LED flashes. A long push on the push-button confirms the settings.

A custom shape can be traced in the whole detection area during the 30-second Learn process. To end this process sooner, push the button again.

See User's Guide to adjust the sensor.