



# ELECTRIC STRIKES

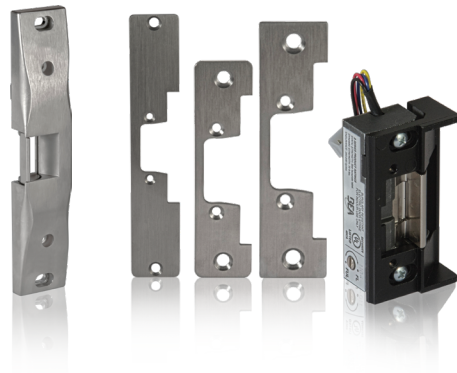
UL LISTED ELECTRIC STRIKES FOR  
US & CANADA

## LEARN MORE



click or scan

## CERTIFICATIONS

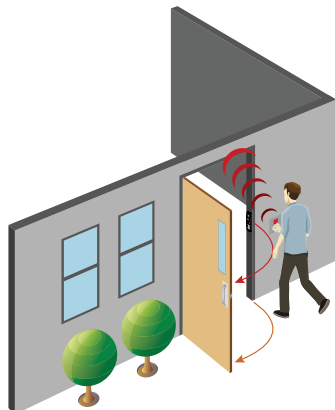


## DESCRIPTION

BEA's **ELECTRIC STRIKE** portfolio includes **RIM EXIT** and **UNIVERSAL CYLINDRICAL STRIKES** for access control applications.

The **RIM EXIT STRIKE** is designed specifically for rim exit devices. This strike is completely surface mounted, which eliminates the need to cut into the door frame.

The **UNIVERSAL CYLINDRICAL STRIKE** provides controlled access and security for egress and ingress applications where code compliance and safety are paramount. This strike is UL294 and UL1034 listed.



## Modular Faceplate Options

Three modular faceplates for the most common door types: hollow metal, aluminum and wood

## Standards Compliant

UL 294 & UL1034 listed Universal Cylindrical and Rim Exit strikes

## Configurable

The non-handed fully reversible design is field selectable to 12 or 24 VDC and field reversible with a fail-safe or fail-secure mode

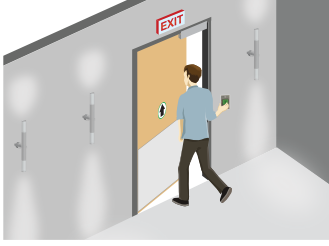
## Durable

UL tested to 250,000 cycles, factory tested to 1,000,000 cycles

## UL Listed

Universal Cylindrical strikes are rated to 1000 lbs static / 70 lbs dynamic (50 lbs dynamic for CUV model). The Rim Exit strikes are rated to 1500 lbs static / 70 dynamic.

## APPLICATIONS



Request-To-Exit

## TECHNICAL SPECIFICATIONS

### 10STRIKERE

<b>Mode</b>	Fail Safe		
<b>Voltage</b>	12 VAC / VDC	24 VAC / VDC	11 - 16 VAC
<b>Duty</b>	Intermittent, Continuous	Intermittent, Continuous	Intermittent, Intermittent
<b>Amps †</b>	0.30, 0.50	0.64, 0.24	0.32 – 0.50
<b>Sound</b>	Buzz, Silent	Buzz, Silent	Buzz, Buzz
<b>Static / Dynamic Strength</b>	1500 lbs / 70 lbs		
<b>Endurance</b>	250,000 cycles (UL tested)		
<b>Latch Throw</b>	¾"		
<b>Standards Compliance</b>	UL 294, UL 1034, UL & cUL listed		

### 10STRIKECU

<b>Mode</b>	Fail Safe, Fail Secure		
<b>Voltage</b>	12 VDC	24 VDC	12 – 24 VAC
<b>Duty</b>	Continuous	Continuous	Intermittent
<b>Amps †</b>	0.375	0.190	0.280 – 0.565
<b>Sound</b>	Silent	Silent	Buzz
<b>Static / Dynamic Strength</b>	1000 lbs / 70 lbs		
<b>Endurance</b>	250,000 cycles (UL tested)		
<b>Latch Throw</b>	½" or ⅝"		
<b>Standards Compliance</b>	UL 294, UL 1034, UL & cUL listed		

Fail Safe – Lock or locking device that remains unlocked on loss of power

Fail Secure – Lock or locking device that remains locked on loss of power.

Also known as Non-Fail Safe (NFS)

Intermittent Duty – Energized less than 1 minute with duty ratio 1:5

Continuous Duty – Energized 1 minute or more

† Amp ratings are based on maximum current draw at 50 °F and include initial power-up current

‡ Nominal resistance at 77 °F ±7% tolerance

## PRODUCT SERIES



**10STRIKERE**  
UL & cUL Listed Rim  
Exit Electric Strike



**10STRIKECU**  
UL & cUL Listed Universal  
Cylindrical Electric Strike

**DISCLAIMER** Information is supplied upon the condition that the persons receiving it will make their own determination as to its suitability for their purposes prior to use. In no event will BEA be responsible for damages of any nature whatsoever resulting from the use of or reliance upon information from this document or the products to which the information refers. BEA has the right without liability to change descriptions and specifications at any time.

[WWW.BEASENSORS.COM](http://WWW.BEASENSORS.COM)



BEA AMERICAS / RIDC Park West / 100 Enterprise Drive / Pittsburgh, PA  
T 1-800-523-2462 / F 1-888-523-2462 / E info-us@BEAsensors.com

A Halma company