

# ALL-O-MATIC®



//// **NEW** REDESIGNED

- » NEW POLISHED DESIGN
- » NEW PHYSICAL LIMIT SWITCHES
- » NEW RELEASE HANDLE
- » EASY WIRING CONNECTOR
- » LONGER STROKE
- » FASTER OPENING

UL 325 2018  
COMPLIANT

UL 991  
COMPLIANT



Intertek  
2019



RESIDENTIAL AND  
LIGHT COMMERCIAL  
APPLICATIONS



MANUAL KEY RELEASE  
FOR EASY ACCESS

## TORO24 **PRIME** SWING ACTUATOR

NEW MODERN & POLISHED DESIGN  
WITH UNINTERRUPTED POWER SUPPLY

PROGRAMMABLE LOGIC AND AN  
ADVANCED CHARGE CONTROLLER ENHANCED  
FOR SOLAR APPLICATIONS



CONTROL BOARD  
WITH ARRAY OF FEATURES

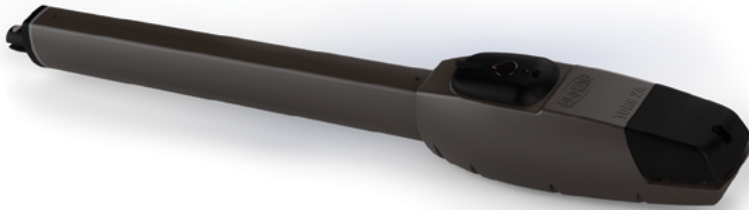
SLIDERS | SWINGERS | OVERHEADS

The standard by which all other **automatic gate operators** are measured

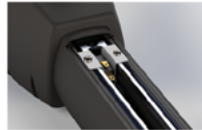
# ALL-O-MATIC®

## TORO24 PRIME SWING ACTUATOR

//// **NEW** REDESIGNED



CONTROL BOARD WITH  
ARRAY OF FEATURES



NEW MODERN &  
POLISHED DESIGN



FOR USE WITH  
LIGHT COMMERCIAL &  
RESIDENTIAL GATES



MANUAL KEY RELEASE  
FOR EASY ACCESS

## SPECS



### UL 325 2018 Compliant

Max Gate Weight	8 feet/1,600 lbs. 12 feet/1,200 lbs.
Max Gate Length	16 feet/800 lbs. 18 feet/600 lbs.
Warranty	4 year residential - 3 year commercial
Motor	N/A
Gate Speed	Adjustable 15-20 seconds per 90° opening
Power Options	115/230 VAC single phase and 24 VDC solar panel
Duty Cycle	Continuous
Battery Back Up	Integrated, with (2) 7Ah 12VDC batteries
Battery Back Up Capacity	Up to 450 cycles
Temperature Range	-40 to 160°
Gearbox Ratio	N/A
Width X Length X Height	Fully retracted arm: 38-39" Fully extended arm: 59"
Shipping Weight	Control box: 55 lbs. Arm: 25 lbs.
Emergency Release	Keyed manual release
Belt Size	N/A
Main Sprocket Size	N/A
Chain Size	N/A
Gearbox Sprocket	N/A
Limit Shaft Sprocket	N/A
Breaker Requirement	20 amp dedicated
Gearbox Pulley	N/A
Motor Pulley	N/A

The warrantor warrants the TORO24 Gate Operator. ALL-O-MATIC INC warrants its gate openers for a period of three (3) years in commercial installations, and for a period of four (4) years in residential installation to be free from defects in circuitry, motor, gear box and workmanship. This warranty applies from the date of purchase to the original owner. Warrantor will repair or, at its option, replace any device which it finds to require service. This device must be sent to the warrantor at the consumer's expense. The warrantor will return the repaired or replaced unit to the customer at the consumer's expense. Labor charges for dealer service or replacement are the responsibility of the owner. These warranties are in lieu of all other warranties either expressed or implied, and ALL-O-MATIC INC shall not be liable for consequential damage. All implied warranties of merchantability and or fitness for a particular purpose are hereby disclaimed and excluded. This limitation is not valid in jurisdictions which do not allow limitation of incidental or consequential damages or limitation of warranty periods. Caution in order to obtain this policy, please complete the registration card and send it by mail within 30 days of purchasing from ALL-O-MATIC INC. or your INSTALLER. If not registered only a one year warranty on all parts will be provided.



SLIDERS | SWINGERS | OVERHEADS

The standard by which all other automatic gate operators are measured