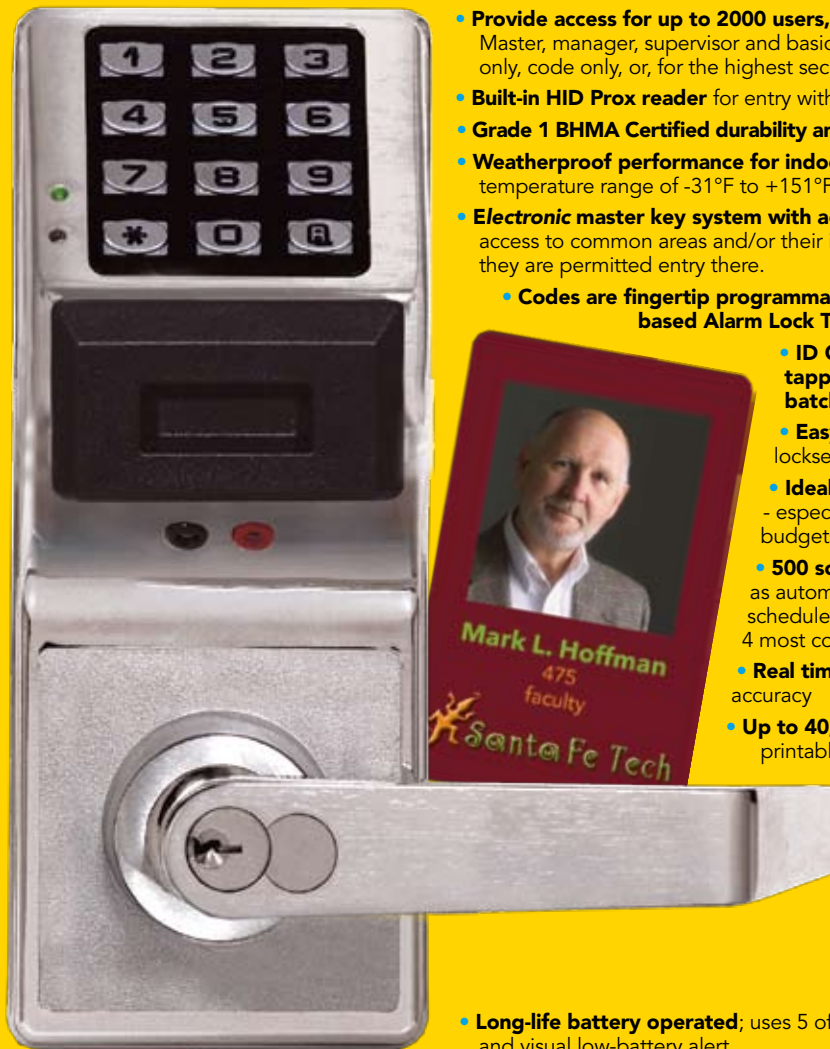


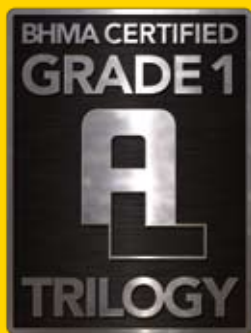
# TrilogyProx: PDL3000

Use the same ID cards as hardwired access systems & install in about an hour

Save all the downtime and 1/2 the cost of hardwired systems



- **Provide access for up to 2000 users, with prox ID-cards or 3 to 6 digit codes** including: Master, manager, supervisor and basic user. Users are individually programmed to use a card only, code only, or, for the highest security, both card and code.
- **Built-in HID Prox reader** for entry with HID prox ID cards and keyfob credentials
- **Grade 1 BHMA Certified durability and rugged clutch mechanism** ensure long dependable life
- **Weatherproof performance for indoor and outdoor applications**, wide operating temperature range of -31°F to +151°F (-35°C to +66°C)
- **Electronic master key system with access customized to each user's hours** - Give each user access to common areas and/or their individual area(s) and do so defined by the actual times they are permitted entry there.
  - **Codes are fingertip programmable -or- downloadable via PC (with Free Windows-based Alarm Lock Trilogy Software)** or using optional Data Transfer Module
  - **ID Cards can be simply added locally by individually tapping them on the lock face -or- added in multiples in batch-enrollment with PC or optional Enroller Module**
  - **Easy to install in about an hour** retrofits most cylindrical locksets and cleanly retrofits mechanical digital locks' prep.
  - **Ideal ID-card access system solution, one door at a time** - especially when hardwire access system capacity, timelines or budgets run out.
  - **500 scheduled events save manpower.** Program events such as automatic locking or unlocking by daily, weekly or holiday schedule, etc. Includes 4 quick schedules for one-step set up of the 4 most common time schedules
  - **Real time clock** allows logging of events to within 1 second accuracy
  - **Up to 40,000 event audit trail with time/date stamp** for a printable record of door access activity by user
  - **Adjustable entry time allowance** from 3-15 seconds
  - **Greater security with "temporary keypad lockout" after 6 unsuccessful code-entry attempts** (adjustable from 1-9 attempts) - Attempts are also logged by time and date
  - **Programmable relays** energize when one or more selected events occur, e.g., in concert with a receptionist buzz-in application or with video cameras
- **Long-life battery operated;** uses 5 off-the-shelf AA batteries; 60,000 cycles, typical. Audible and visual low-battery alert.
- **Standard key override or interchangeable core models** accepting 6 or 7 pin cores from Arrow, Best, Falcon or KSP. Other IC core preps available
- **Available in standard Trilogy leverset (straight) or with regal (curved) lever**
- **Seven finishes;** polished brass (US3), satin brass (US4), antique brass (US5), polished chrome (US26), satin chrome (US26D), satin bronze (US10) and duronodic (US 10B).



**ALARM LOCK**

## New! PDL3000K

- Additionally logs mechanical key override use in audit trail. Available in standard key override or interchangeable core prep.



**KEYPAD:** Weatherproof, all metal, 12-button programmable for multi-level access functions. Proximity antenna housing molded of ultra high strength, impact resistant Lexan®.

**HID Proximity Reader:** Built-in, weather-sealed HID reader supports virtually all HID cards and HID fob credential formats.

**DOOR THICKNESS:** 1 5/8" to 1 7/8" standard. For 1 3/8" doors use HW567 & HW569 spacers. For other other thicknesses, please consult factory.

**BACKSET:** 2 3/4" Standard. 2 3/8" backset also available.

**AUDIT TRAIL:** Lock's activity log can be extracted by using the AL-DTMIII (data transfer module), the AL-PCI2 (PC interface) and/or can be on-site printed using the AL-IR1 (hand-held infrared printer)

**STRIKE:** 1-1/8" x 2-3/4" T strike standard. With screws for wood or metal jambs. 1 1/4" x 4 7/8". ASA strike also included.

**FINISHES:** US3 polished brass, US4 satin brass, US26D satin chrome, US26 polished chrome, US5 antique brass, US10 satin bronze and US10B duronic.

**DOOR PREP:** Standard ANSI A115 Series Prep, modified by adding additional through-bolt holes.

**COMPLIANCES:** BHMA Certified Grade I, heavy duty cylindrical lockset, UL listed to the 10C Positive Pressure Specification. Latchbolt is UL listed and 3-hour fire rated, FCC certified. ADA compliant levers.

**STANDARD KEY OVERRIDE CYLINDER:** Solid brass 6 pin tumbler cylinder keyed 5, SCI keyway, furnished in all K.O. models. Tailpieces for Schlage (HW580) & Lori (HW620) cylinders (furnished).

**INTERCHANGEABLE CODE MODELS:** Accepts 6 & 7 Pin Cylinders from: Best, Arrow, KSP, Falcon and Kaba Peaks. Also available IC Core models for Yale, Medeco, Corbin/Ruswin, Sargent and Schlage (Schlage IC available only with regal (curved) handle). *Alarm Lock tailpiece is supplied; IC Core is not included.*

**POWER:** 5AA alkaline batteries, supplied. Audible low battery alert, visual and audible entry indicators, 60,000 cycles typical.

**PROGRAMMING:** Locking modes, event schedules, group, individual, master, management, passage, emergency service codes. Lockout, remote override capability and allowable entry time (3, 10 or 15 seconds), are programmable through the keypad, AL-DTMIII or Alarm Lock's DL-Windows PC Software.

**PDL3000K:** Model logs mechanical key override use and has a standard interchangeable core prep.



Regal handle option



Lever sets feature clutch mechanism ensuring longer life and complies with ADA specs providing barrier-free access to the disabled.

## Trilogy audit trail lock accessories

**AL-DTMIII Data Transfer Module** used to transfer program data from the PC (running DL-WINDOWS software) to the lock and receives audit trail from the lock. Can store data for up to 96 locks at a time.

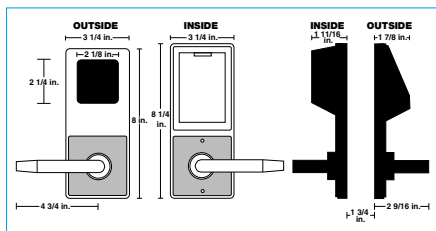
**AL-PCI2 Trilogy PC Software Kit** Windows-format software kit used to program Trilogy lock, codes, schedules, view audit trail reports. Kit includes DL-WINDOWS software and (required) computer interface cable for use on serial port. Note: Requires DL-WINDOWS Software version 3.02 or higher.

**AL-PCI2-U**, As above, but with interface cable for USB port.

**DL-WINDOWS** Upgrade for Trilogy software version (software only). (Contained in two items above.)

**AL-PRE: Prox Card Reader/Enroller** Enables instant, automatic enrollment of Prox cards, keyfobs, tags into DL-Windows (Simply present the prox Card/fob device to the unit's faceplate to enroll—no need to be in the presence of the lock while enrolling—eliminates the need for keyboarding each badge's number). Supports all Prox cards, keyfobs and tags. Simultaneous card enrollment, downloading or uploading – all on just one serial port. 9V Battery operation.

**AL-IR1 Infrared Printer** Prints the event log and user code with wireless hand-held convenience (battery operated).



**PDL 30 00 IC /26D -Y**

**Model & Series:**

PDL30 = Trilogy Prox Digital Lock  
PL3000 = As above, less keypad

**Trim:**

00 = Straight Lever  
75 = Regal Lever

**Cylinder:**

IC = Standard Interchangeable Core  
Prep for

Best, Falcon, Arrow, KSP

(Note: No "IC" indicates standard K.O. cylinder.)

**Finish:**

/26D = US26D Satin Chrome  
/3 = US3 Polished Brass  
/26 = US26 Polished Chrome  
/4 = Satin Brass  
/5 = US5 Antique Brass  
/10 = Satin bronze  
/10B = Duronic

**Special Order IC Prep:**

-Y = Yale  
-M = Medeco  
-R = Sargent  
-C = Corbin/Ruswin  
-S = Schlage (in regal lever)



**ALARM LOCK**

345 Bayview Ave, Amityville, New York 11701  
1-800-ALA-LOCK • Fax 631-789-3383  
www.alarmlock.com

Trilogy is a trademark of Alarm Lock. © NAPCO 12/2008  
Patents and Patents Pending ALA156A