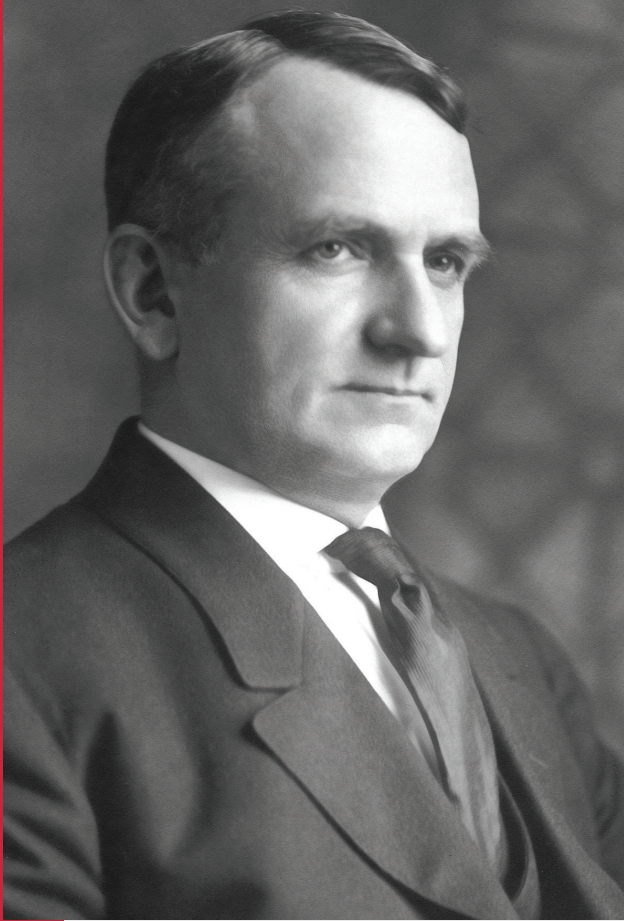




**Benjamin Moore®**

**2024**

U.S. PRODUCT GUIDE



# About Benjamin Moore & Co.

## Our History

Benjamin Moore immigrated from Ireland to Brooklyn, N.Y., where he found work at a local paint company. In 1883, he and his brother invested \$2,000 to launch Moore Brothers, manufacturing a coating for walls called Calsom Finish. From those humble beginnings, Benjamin Moore & Co., has grown to become a preeminent leader in the coatings industry. Benjamin Moore understood that his own strong values would provide the foundation for a successful company and a respected brand. He recognized that a customer had the right to rely implicitly upon the good faith of the manufacturer and upon the unvarying quality of its product. He also established the practice of distributing Benjamin Moore products solely through a network of independent retailers. From the beginning, Benjamin Moore believed the company should pursue “the application of intelligence to industry based upon integrity.” Intelligence, industry and integrity provide the basis for our triangle “M” logo, developed in 1925 by Benjamin’s nephew and first successor, L.P. Moore. Today, we continue to uphold the values first identified by the Moore family.

## Our Company

Benjamin Moore, a Berkshire Hathaway company, was founded in 1883 and remains one of the world’s leading paint, color and coatings brands. A manufacturer of premium quality residential and commercial coatings, Benjamin Moore maintains a relentless commitment to innovation and sustainable manufacturing practices. The portfolio spans the brand’s flagship paint lines including Aura®, Regal® Select, Ben, Ultra Spec®, Advance®, Scuff-X, Insl-X® and more. Benjamin Moore is renowned for its more than 3,500 unmatched colors, and its design tools and expertise for consumers and professionals alike. Benjamin Moore products are available exclusively from more than 8,500 locally owned and operated paint, decorating and hardware retailers throughout the United States, Canada and over 70 countries globally.

## Our Vision

To inspire and transform—  
our homes, our communities, and our lives—  
one brushstroke at a time.

## Our Mission

Focus relentlessly on the customer and  
community by delivering unparalleled  
experiences through the highest quality,  
most recommended paint, coatings,  
colors and solutions.



# Benjamin Moore & Co. Family of Brands

We believe that being a premium brand in the paint and coatings market means delivering the best quality products available and continually improving upon those products. That is why each of the brands we offer has a distinct focus with products to meet specific needs.



**Benjamin Moore®**

**[benjaminmoore.com](http://benjaminmoore.com)**

- Premium paints, stains & primers
- Commercial and professional coatings & products
- High performance coatings (primers, enamels, epoxies, urethanes & more)

---

**INSLX®**

**[benjaminmoore.com/inslx](http://benjaminmoore.com/inslx)**

- Primers, specialty paints and coatings to solve for every need, including floor & masonry coatings, pool paints & more

---

ESTD 1957  
**CORONADO®**  
PREMIUM PAINTS

**[benjaminmoore.com/coronado](http://benjaminmoore.com/coronado)**

- Value-engineered interior and exterior paint, and primer for commercial & DIY application



# Gennex<sup>®</sup>

## Color Technology

Most common paint colorants require the addition of certain chemicals so that they can mix easily into any number of paints. We realized that if we made our own colorants, designed specifically for our paints, we could remove unnecessary chemicals that weaken paint. What we ended up with are formulas that are better and stronger.

Gennex<sup>®</sup> Color Technology is the precise result of Benjamin Moore paint formulas and Benjamin Moore Gennex colorant, **together**. This pairing is why Benjamin Moore products can't be replicated.

Our Gennex<sup>®</sup> waterborne colorants give our paints vibrant hues that last for years – paint that resists color fading indoors and stands up to harsh weather conditions outdoors. While other manufacturers' paints may be less durable with darker colors, thanks to Gennex, you get both premium color and proven longevity across the entire color spectrum.

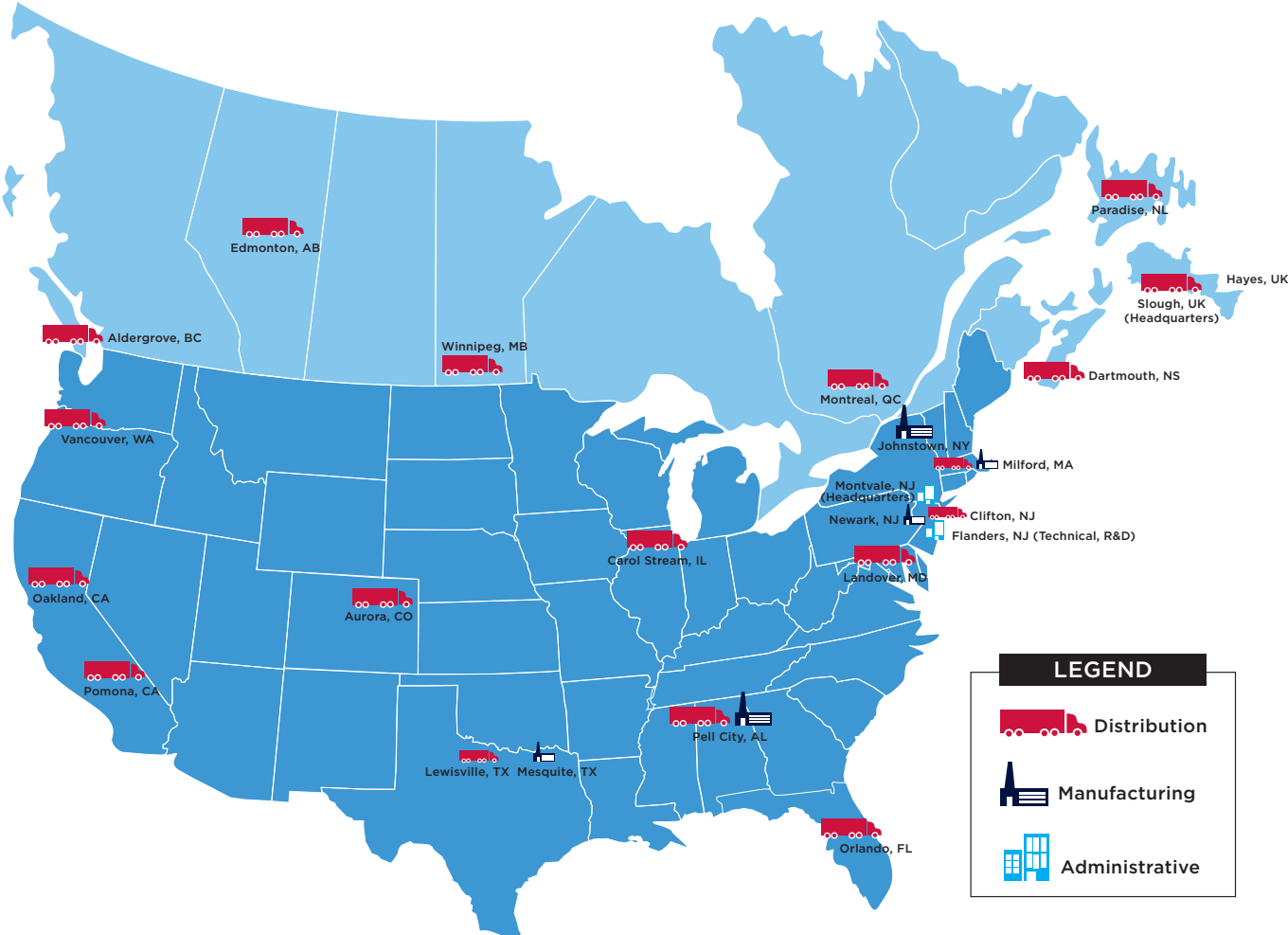
It's also why our colors are simply unmatched. Achieving color accuracy is of utmost importance and Gennex<sup>®</sup> Color Technology provides that peace of mind. Never trust another paint to be a Benjamin Moore color.





# Manufacturing and Distribution Facilities

We operate manufacturing and distribution facilities throughout the United States and Canada, assuring a continuous supply of coatings to the retailers and their customers, with prompt, on-time delivery.



### Need Assistance?

Benjamin Moore is proud to be your partner, offering a team of 280+ territory, specialty coatings, hardware development and architectural & design representatives, ready to support your every business need.

### Some of our services include:

- Bid assistance
- Customized color planning services for commercial clients
- End-user programs to help grow your business with the professional segment
- Product and application expertise
- Product training and certification programs
- Site visits and job specifications
- Updates on new products, technology, regulatory and industry news

### Contact Information

Architect & Design Hotline  
(866) 708-9181

### Consumer Hotline - Find a Retailer

(855) 724-6802

### National Accounts Partnership Program

(877) 623-8484

### Product Information

(888) 236-6667

### Public Relations

PressRequests@Benjaminmoore.com



# Premium Interior

## Aura® Interior Paint

The ultimate interior paint for unparalleled color and stunning beauty that lasts.

Code	Product	Recoat Time	Vol. Sol. (± 2%)	Cov. (Sq. Ft.)	VOC Range	Specifications†
N522	Aura® Interior Paint - Matte	1 hour	47.0	350-400	< 50 g/L	MPI 53, 143; Eligible for LEED® v4 credit; Qualifies for CHPS low emitting credit; CDPH v1 Emission certified
N524	Aura® Interior Paint - Eggshell	1 hour	46.0	350-400	< 50 g/L	MPI 44, 138; Eligible for LEED® v4 credit; Qualifies for CHPS low emitting credit; CDPH v1 Emission certified
N526	Aura® Interior Paint - Satin	1 hour	39.0	350-450	< 50 g/L	MPI 43, 140; Eligible for LEED® v4 credit; Qualifies for CHPS low emitting credit; CDPH v1 Emission certified
N528	Aura® Interior Paint - Semi-Gloss	1 hour	38.0	400-450	< 50 g/L	MPI 54, 141, 147; Eligible for LEED® v4 credit; Qualifies for CHPS low emitting credit; CDPH v1 Emission certified

Product Description	Features/Benefits
<p><b>N522, N524, N526, N528:</b>            Aura® is Benjamin Moore's ultra premium interior paint - the only choice for unparalleled color and stunning beauty that lasts. Its proprietary 100% acrylic resin, enhanced pigments, and exclusive Color Lock® technology give the product its extraordinary performance properties.</p> <p><b>Available Colors:</b> White available in Semi-Gloss only. Tint bases available for all colors.</p>	<ul style="list-style-type: none"> <li>• Proprietary Color Lock® technology ensures lasting, incomparable color</li> <li>• Superior coverage and hide, even in lighter tones and whites</li> <li>• Exceptionally smooth application and uniform color across all sheens</li> <li>• Color stays vibrant with no rub off</li> <li>• Fade resistant for lasting color</li> <li>• Burnish and scuff resistant</li> <li>• Low VOC</li> <li>• Engineered with Gennex® Color Technology</li> </ul>



Benjamin Moore's Green Promise® designation is our company's assurance that this product meets – and often exceeds – rigorous environmental and performance criteria regarding VOCs, emissions, application, washability, scrubability, and packaging, while also delivering the premium levels of performance you expect from Benjamin Moore.

CDPH standard method for the testing and evaluation of VOC emission from indoor sources using environmental test standard.



# Premium Interior

## Regal® Select Interior Paint

Trusted for generations, the interior paint with the durability and washability to stand up to everyday wear and tear.

Code	Product	Recoat Time	Vol. Sol. (± 2%)	Cov. (Sq. Ft.)	VOC Range	Specifications†
N547	Regal® Select Interior Paint - Flat	1-2 hours	46.0	400-450	< 50 g/L	MPI 142, 143; Eligible for LEED® v4 credit; Qualifies for CHPS low emitting credit; CDPH v1 Emission certified
N548	Regal® Select Interior Paint - Matte	1-2 hours	43.0	400-450	< 50 g/L	MPI 142, 143; Eligible for LEED® v4 credit; Qualifies for CHPS low emitting credit; CDPH v1 Emission certified
N549	Regal® Select Interior Paint - Eggshell	1-2 hours	45.0	400-450	< 50 g/L	MPI 138; Eligible for LEED® v4 credit; Qualifies for CHPS low emitting credit; CDPH v1 Emission certified
N550	Regal® Select Interior Paint - Satin/Pearl	1-2 hours	38.0	400-450	< 50 g/L	MPI 140; Eligible for LEED® v4 credit; Qualifies for CHPS low emitting credit; CDPH v1 Emission certified
N551*	Regal® Select Interior Paint - Semi-Gloss	3 hours	38.0	400-450	< 100 g/L	MPI 54, 141; Eligible for LEED® v4 credit; Qualifies for CHPS low emitting credit; CDPH v1 Emission certified

Product Description	Features/Benefits
<p><b>N547, N548, N549, N550, and N551*:</b> Regal® Select is the interior paint professionals have relied on for years to deliver renowned Benjamin Moore quality. Featuring unbeatable flow &amp; leveling, as well as excellent hide &amp; coverage the professionals expect, Regal Select is the favorite paint that stands up to everyday wear and tear.</p> <p><b>Available Colors:</b> White. Tint bases available for all colors.</p>	<ul style="list-style-type: none"> <li>• Unbeatable flow and leveling for professional results every time</li> <li>• Proprietary stain release technology to easily clean stains and scuffs</li> <li>• Withstands scuffs, mars, and burnishing from everyday wear and tear</li> <li>• Excellent hide and fast-drying for completing projects faster</li> <li>• Provides a mildew-resistant finish</li> <li>• Engineered with Genex® Color Technology</li> </ul>

\*Product available in lower-VOC formulation.



Benjamin Moore's Green Promise® designation is our company's assurance that this product meets – and often exceeds – rigorous environmental and performance criteria regarding VOCs, emissions, application, washability, scrubability, and packaging, while also delivering the premium levels of performance you expect from Benjamin Moore.

CDPH standard method for the testing and evaluation of VOC emission from indoor sources using environmental test standard.

Please note that not all Benjamin Moore & Co. products are available in all areas due to VOC regulations. Please check with your local retailer before making your selection.

†For the most up-to-date MPI specifications, visit [www.mpi.net](http://www.mpi.net)



# Premium Interior

## Ben® Interior Paint

Experience Benjamin Moore quality with Ben®, which provides an effortless painting experience from start to finish.

Code	Product	Recoat Time	Vol. Sol. (± 2%)	Cov. (Sq. Ft.)	VOC Range	Specifications†
N624	Ben® Interior Paint - Matte	2 hours	38.0	400-450	0 g/L	MPI 53, Eligible for LEED® v4 credit; Qualifies for CHPS low emitting credit; CDPH v1 Emission certified
N626	Ben® Interior Paint - Eggshell	2 hours	37.0	400-450	0 g/L	MPI 44, Eligible for LEED® v4 credit; Qualifies for CHPS low emitting credit; CDPH v1 Emission certified
N628	Ben® Interior Paint - Satin/Pearl	2 hours	40.0	400-450	0 g/L	MPI 43, Eligible for LEED® v4 credit; Qualifies for CHPS low emitting credit; CDPH v1 Emission certified
N627	Ben® Interior Paint - Semi-Gloss	4 hours	41.0	400-450	0 g/L	MPI 54, Eligible for LEED® v4 credit; Qualifies for CHPS low emitting credit; CDPH v1 Emission certified

Product Description	Features/Benefits
<p><b>N624, N626, N628, N627:</b> An effortless painting experience from start to finish - easy to apply, easy to touch up, easy to maintain. With its smooth application, extended open time, exceptional touch-up, and scuff-resistance, Ben delivers the premium quality expected of Benjamin Moore.</p> <p><b>Available Colors:</b> White. Tint bases available for all colors.</p>	<ul style="list-style-type: none"> <li>• Great for touch-ups and fixing areas before drying due to longer open time</li> <li>• Scuff-resistant for an easier to maintain finish</li> <li>• Spatter-resistant formula that's easy to clean-up</li> <li>• Excellent hide</li> <li>• Engineered with Gennex® Color Technology</li> </ul>



Benjamin Moore's Green Promise® designation is our company's assurance that this product meets – and often exceeds – rigorous environmental and performance criteria regarding VOCs, emissions, application, washability, scrubability, and packaging, while also delivering the premium levels of performance you expect from Benjamin Moore.

CDPH standard method for the testing and evaluation of VOC emission from indoor sources using environmental test standard.

Please note that not all Benjamin Moore & Co. products are available in all areas due to VOC regulations. Please check with your local retailer before making your selection.

†For the most up-to-date MPI specifications, visit [www.mpi.net](http://www.mpi.net)





# Premium Interior

## Aura® Bath & Spa Interior Paint

A luxurious matte finish designed for optimal performance in high-humidity environments.

Code	Product	Recoat Time	Vol. Sol. (± 2%)	Cov. (Sq. Ft.)	VOC Range	Specifications†
0532	Aura® Bath & Spa Interior Paint - Matte	1 hour	45.0	350-400	0 g/L	Eligible for LEED® v4 credit; Qualifies for CHPS low emitting credit; CDPH v1 Emission certified

Product Description	Features/Benefits
<p><b>0532:</b> Aura® Bath &amp; Spa is Benjamin Moore's ultra premium bathroom paint; the matte finish offers unparalleled beauty in high humidity.</p> <p><b>Available Colors:</b> Tint bases available for all colors.</p>	<ul style="list-style-type: none"> <li>Proprietary Color Lock® Technology ensures lasting, incomparable color</li> <li>The choice for achieving a matte finish in high humidity environments for unsurpassed beauty</li> <li>Provides a mildew-resistant coating to maintain a fresh look that lasts</li> <li>Stands up to repeated washing with no color rub-off</li> <li>Exceptional hide for a flawless finish</li> <li>Engineered with Gennex® Color Technology</li> </ul>



Benjamin Moore's Green Promise® designation is our company's assurance that this product meets – and often exceeds – rigorous environmental and performance criteria regarding VOCs, emissions, application, washability, scrubability, and packaging, while also delivering the premium levels of performance you expect from Benjamin Moore.



# Interior Clear Finishes

## Stays Clear® Acrylic Polyurethane

A premium-quality coating that produces a durable and clear finish that dries quickly, and does not scratch or yellow over time.

Code	Product	Recoat Time	Vol. Sol. (± 2%)	Cov. (Sq. Ft.)	VOC Range	Specifications†
W422	Stays Clear® Acrylic Polyurethane - Gloss	2-3 hours	26.0	350-450	> 250 g/L	Eligible for LEED® v4 credit; Qualifies for CHPS low emitting credit; CDPH v1 Emission certified
W423	Stays Clear® Acrylic Polyurethane - Low Lustre	2-3 hours	34.0	350-450	< 250 g/L	Eligible for LEED® v4 credit; Qualifies for CHPS low emitting credit; CDPH v1 Emission certified
W425	Stays Clear® Acrylic Polyurethane - Flat	2-3 hours	32.0	350-450	> 250 g/L	Eligible for LEED® v4 credit; Qualifies for CHPS low emitting credit; CDPH v1 Emission certified

Product Description	Features/Benefits
<p><b>W422, W423, W425:</b> A product that combines the attributes of acrylic and polyurethane resins to produce a clear finish that dries quickly. Stays Clear® provides excellent abrasion resistance, protects against household chemicals and water, alcohol, or food stains. For use on new or previously painted, stained, or varnished interior wood surfaces.</p> <p><b>Available Colors:</b> Clear</p>	<ul style="list-style-type: none"> <li>• Durable and non-yellowing</li> <li>• Excellent scratch and stain resistance</li> <li>• Easy application</li> <li>• Soap and water clean-up</li> <li>• Flat finish (W425) not recommended for use on floors</li> </ul>



# Professional Primers

## Benjamin Moore® Professional Primers

Professional primers designed to meet many priming challenges and set every professional painter up for success.

Code	Product	Recoat Time	Vol. Sol. (± 2%)	Cov. (Sq. Ft.)	VOC Range	Specifications†
0067	Multi-Purpose Primer	1 hour	36.0	350-450	< 50 g/L	MPI 6, 39, 137, Eligible for LEED® v4 credit, Qualifies for CHPS low emitting credit, CDPH v1 Emission certified
0380	Drywall Primer	2 hours	30.0	350-450	< 50 g/L	MPI 50, Eligible for LEED® v4 credit, Qualifies for CHPS low emitting credit, CDPH v1 Emission certified
0507	Fast Sanding Primer	1-2 hours	34.0	350-450	< 50 g/L	MPI 50, Eligible for LEED® v4 credit, Qualifies for CHPS low emitting credit, CDPH v1 Emission certified

Product Description	Features/Benefits
<p><b>0067:</b> A 100% acrylic, spatter-resistant primer that is the ideal go-to solution for multiple interior and exterior surfaces.</p> <p>Available Colors: White</p>	<ul style="list-style-type: none"> <li>• 100% acrylic</li> <li>• Interior/exterior primer</li> <li>• Strong adhesion and sealing</li> <li>• Quick-drying</li> <li>• Provides a mildew-resistant coating</li> <li>• Low VOC</li> </ul>
<p><b>0380:</b> A quick-drying, acrylic latex that is designed for new or previously painted drywall and is easy to apply.</p> <p>Available Colors: White</p>	<ul style="list-style-type: none"> <li>• Excellent sealing and holdout</li> <li>• High-hiding</li> <li>• Quick-drying</li> </ul>
<p><b>0507:</b> An acrylic formula that sands to a powder after only one hour, yielding a smooth base coat that is ideal for an ultra-smooth top coat.</p> <p>Available Colors: White</p>	<ul style="list-style-type: none"> <li>• Ready to sand in one hour</li> <li>• Acrylic formula</li> <li>• Excellent flow and leveling</li> <li>• Outstanding sealing and holdout</li> <li>• Low VOC</li> </ul>

CDPH standard method for the testing and evaluation of VOC emission from indoor sources using environmental test standard.



# Floor Paints

## Floor & Patio Floor Enamels

Premium quality floor enamels formulated to provide a smooth, uniform finish for interior or exterior floor surfaces.

Code	Product	Recoat Time	Vol. Sol. (± 2%)	Cov. (Sq. Ft.)	VOC Range	Specifications†
<b>N122</b>	<b>Floor &amp; Patio Latex Enamel - Low Sheen</b>	4 hours	37.0	500-600	< 50 g/L	Eligible for LEED® v4 credit; Qualifies for CHPS low emitting credit; CDPH v1 Emission certified
<b>0121</b>	<b>Floor &amp; Patio Latex Enamel - High Gloss</b>	12 hours	41.0	600-700	< 50 g/L	Eligible for LEED® v4 credit; Qualifies for CHPS low emitting credit; CDPH v1 Emission certified

Product Description	Features/Benefits
<p><b>N122:</b> A premium-quality, quick-drying, epoxy-modified, acrylic low-sheen latex floor enamel that is low VOC. For interior or exterior use on unpainted concrete (new or old) and previously finished wood or concrete floors.</p> <p><b>Available Colors:</b> White, Platinum Gray, Light Gray, Deck Gray. Tint bases available for all colors.</p>	<ul style="list-style-type: none"> <li>• Easy application</li> <li>• Resistant to soaps, detergents, grease, and oil</li> <li>• Durable, lasting finish - resists marring and scratching</li> <li>• Interior and exterior use - can be used over multiple substrates</li> <li>• Excellent color and gloss retention</li> </ul>
<p><b>0121:</b> A premium-quality, quick-drying, urethane alkyd-modified acrylic high-gloss latex floor enamel. One coat covers most previously painted surfaces that are in fair to good condition.</p> <p><b>Available Colors:</b> White, Platinum Gray, Light Gray, Deck Gray. Tint bases available for all colors.</p>	<ul style="list-style-type: none"> <li>• Easy application</li> <li>• Resistant to soaps, detergents, grease, and oil</li> <li>• Durable, lasting finish - resists marring and scratching</li> <li>• Interior and exterior use - can be used over multiple substrates</li> <li>• Excellent color and gloss retention</li> </ul>





# Primers

## Fresh Start® Primers

A complete line of interior, exterior, and problem-solving primers that deliver exceptional adhesion and holdout for a smooth top coat, and provide superior stain-blocking properties for various common issues.

Code	Product	Recoat Time	Vol. Sol. (± 2%)	Cov. (Sq. Ft.)	VOC Range	Specifications†
0046	<b>Fresh Start® High-Hiding All-Purpose Primer</b>	2 hours	40.0	400-450	< 50 g/L	MPI 6, 17, 39, 50, 137. Eligible for LEED® v4 credit; Qualifies for CHPS low emitting credit; CDPH v1 Emission certified
0032	<b>Fresh Start® Undercoater &amp; Primer/ Sealer</b>	2 hours	58.0	400-500	< 350 g/L	MPI 45, 136
0094	<b>Fresh Start® Deck &amp; Siding Primer</b>	8 hours	56.0	450-550	< 350 g/L	MPI 5
C085	<b>Fresh Start® All-Purpose Primer</b>	3-4 hours	67.0	550-650	< 100 g/L	MPI 5, 45, 69, 136

Product Description	Features/Benefits
<p><b>0046:</b> The go-to for significant color change, our highest-performing 100% acrylic primer delivers maximum hide and a uniform finish across most interior and exterior surfaces.</p> <p><b>Available Colors:</b> White, Deep Base</p>	<ul style="list-style-type: none"> <li>• Seals and suppresses most bleeding type stains</li> <li>• Maximum hiding</li> <li>• Fast-drying</li> <li>• Low VOC</li> <li>• Provides a mildew-resistant coating</li> <li>• Excellent adhesion</li> </ul>
<p><b>0032:</b> A premium sealer and undercoater, this interior alkyd primer flows and levels to a smooth finish, delivering outstanding enamel holdout and stain suppression.</p> <p><b>Available Colors:</b> White, Deep Base</p>	<ul style="list-style-type: none"> <li>• Excellent adhesion and sealing properties</li> <li>• Delivers outstanding stain suppression</li> <li>• Recoat within 2 hours</li> </ul>
<p><b>0094:</b> Ideal for tannin-rich woods and weathered or chalky surfaces, this premium exterior alkyd primer offers excellent penetration for maximum adhesion and a long-lasting finish.</p> <p><b>Available Colors:</b> White</p>	<ul style="list-style-type: none"> <li>• Penetrates wood surfaces for maximum adhesion</li> <li>• Seals uniformly</li> <li>• Outstanding stain suppression</li> </ul>
<p><b>C085*:</b> A premium all-purpose alkyd primer, undercoater and stain-blocking sealer for vertical and horizontal surfaces, this interior and exterior primer delivers a mildew-resistant coating, superior tannin-blocking, four-hour recoat and excellent hide.</p> <p><b>Available Colors:</b> White</p>	<ul style="list-style-type: none"> <li>• Superior tannin blocking and stain blocking</li> <li>• Excellent hide</li> <li>• Excellent adhesion and sealing</li> <li>• Provides a mildew-resistant coating</li> <li>• Low VOC</li> </ul>

\*Not available in all areas. Please check with your local Benjamin Moore® retailer.

CDPH standard method for the testing and evaluation of VOC emission from indoor sources using environmental test standard.

Please note that not all Benjamin Moore & Co. products are available in all areas due to VOC regulations. Please check with your local retailer before making your selection.

†For the most up-to-date MPI specifications, visit [www.mpi.net](http://www.mpi.net)



# Professional Masonry

## Ultra Spec® Masonry Primers & Sealers

Primers and sealers formulated to penetrate, fill, seal, and finish new or previously painted masonry surfaces in one application, providing the proper foundation for subsequent finish coats.

Code	Product	Recoat Time	Vol. Sol. (± 2%)	Cov. (Sq. Ft.)	VOC Range	Specifications†
0452	Ultra Spec® Masonry Acrylic Latex Satin-FIL	2-3 hours	41.0	100-200	< 50 g/L	-
0571	Ultra Spec® Masonry High Build Block Filler	2-3 hours	52.0	75-100	< 50 g/L	MPI 4; Eligible for LEED® v4 credit; Qualifies for CHPS low emitting credit
0608	Ultra Spec® Masonry Int/Ext 100% Acrylic Sealer	4 hours	21.0	200-400	< 50 g/L	MPI 3; Eligible for LEED® v4 credit; Qualifies for CHPS low emitting credit; CDPH v1 Emission certified
N609	Ultra Spec® Masonry Int/Ext Acrylic High Build Masonry Primer	4 hours	42.0	350-400	< 50 g/L	MPI 3; Eligible for LEED® v4 credit; Qualifies for CHPS low emitting credit; CDPH v1 Emission certified

Product Description	Features/Benefits
<p><b>0452:</b> Formulated to fill, seal, and finish in an easy one-coat spray application. Ideal for interior and exterior cured cinder block, poured/pre-cast concrete, brick, and other masonry structures, and incidental primed metal and wood. May be used on interior wallboard and cured plaster.</p> <p><b>Available Colors:</b> White</p>	<ul style="list-style-type: none"> <li>• Beautiful and decorative satin finish</li> <li>• Withstands washing and scrubbing</li> <li>• Fills cracks and voids for a uniform finish</li> <li>• Fast-drying</li> </ul>
<p><b>0571:</b> A full-bodied and high-build, latex block filler specially formulated for use as a preparatory coating to create a less porous and smoother painting surface. This product is easy to brush or spray.</p> <p><b>Available Colors:</b> White</p>	<ul style="list-style-type: none"> <li>• Fills small cracks and voids in concrete, cinder block, and rough masonry</li> <li>• Can be used with interior or exterior Benjamin Moore® finishes</li> </ul>
<p><b>0608:</b> Designed to penetrate and seal the surface of new or previously painted masonry surfaces providing the proper foundation for subsequent finish coats. The clear can also be used as a decorative sealer on interior or exterior masonry surfaces.</p> <p><b>Available Colors:</b> White, Clear</p>	<ul style="list-style-type: none"> <li>• Reduces the porosity of masonry surfaces</li> <li>• Provides excellent surface adhesion</li> <li>• High alkali-resistance for use with new concrete</li> <li>• Tintable</li> </ul>
<p><b>N609:</b> Designed to penetrate and seal the surface of new or previously painted masonry surfaces providing the proper foundation for subsequent finish coats.</p> <p><b>Available Colors:</b> White</p>	<ul style="list-style-type: none"> <li>• Reduces the porosity of masonry surfaces</li> <li>• Provides excellent surface adhesion</li> <li>• High alkali-resistance for use with new concrete</li> <li>• Higher-hiding</li> <li>• Tintable</li> </ul>

CDPH standard method for the testing and evaluation of VOC emission from indoor sources using environmental test standard.

Please note that not all Benjamin Moore & Co. products are available in all areas due to VOC regulations. Please check with your local retailer before making your selection.

†For the most up-to-date MPI specifications, visit [www.mpi.net](http://www.mpi.net)



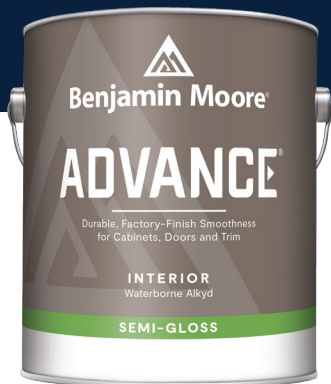
# Professional Masonry

## Ultra Spec® Masonry Elastomeric Waterproof Coating

Flexible, 100% acrylic elastomeric coatings that provide a waterproof finish to help protect masonry structures from damage due to weathering and moisture.

Code	Product	Recoat Time	Vol. Sol. (± 2%)	Cov. (Sq. Ft.)	VOC Range	Specifications†
0359	Ultra Spec® Masonry Elastomeric Waterproof Coating - Flat	12 hours	38.0	80-100	< 100 g/L	-
0360	Ultra Spec® Masonry Elastomeric Waterproof Coating - Low Lustre	12 hours	47.0	60-80	< 100 g/L	-

Product Description	Features/Benefits
<p><b>0359, 0360:</b> A high-build, elastomeric coating that is designed to beautify and help prevent masonry structures from damage due to weathering and moisture intrusion. When applied as directed, at up to 20 mils wet film thickness per coat, this product fills pores and bridges minor surface cracks to create a monolithic film that helps protect masonry from the weather's deteriorating effects.</p> <p><b>Available Colors:</b> White. Tint bases available for all colors.</p>	<ul style="list-style-type: none"> <li>• Breathable finish allows interior moisture to escape without damage to the film</li> <li>• Provides a waterproof finish that helps protect structures from moisture damage</li> <li>• Provides a mildew-resistant coating</li> <li>• 200% elongation (0359); 300% elongation (0360)</li> <li>• Bridges cracks up to 1/32"</li> <li>• Reduces the porosity of masonry surfaces</li> <li>• Provides excellent surface adhesion</li> <li>• High alkali resistance for use with new concrete</li> </ul>



# Premium Interior

## Advance® Interior Paint

A premium quality, waterborne alkyd paint that offers a full line of durable high-end finishes ideal for doors, trim, and cabinetry.

Code	Product	Recoat Time	Vol. Sol. (± 2%)	Cov. (Sq. Ft.)	VOC Range	Specifications†
0792	Advance® Interior Paint - Satin	16 hours	38.0	400-500	< 50 g/L	-
0793	Advance® Interior Paint - Semi-Gloss	16 hours	35.0	400-500	< 50 g/L	-
N794	Advance® Interior Paint - High Gloss	16 hours	39.0	400-500	< 50 g/L	MPI 157

Product Description	Features/Benefits
<p><b>0792:</b> A premium quality waterborne alkyd satin finish that provides the desired flow and leveling characteristics of a conventional alkyd. It delivers a durable, smooth satin finish similar to that of a hand-rubbed lacquer that stands up to repeated washing.</p> <p><b>Available Colors:</b> White, Black. Tint bases available for all colors.</p>	<ul style="list-style-type: none"> <li>• Exceptional application and feel</li> <li>• Outstanding coverage and hide</li> <li>• Cures to a hard, furniture-quality finish</li> <li>• Low VOC</li> <li>• Engineered with Gennex® Color Technology</li> </ul>
<p><b>0793:</b> A premium quality waterborne alkyd semi-gloss finish that provides the desired flow and leveling characteristics of a conventional alkyd. It provides a durable, semi-gloss finish that stands up to repeated washing.</p> <p><b>Available Colors:</b> White, Black. Tint bases available for all colors.</p>	<ul style="list-style-type: none"> <li>• Exceptional application and feel</li> <li>• Outstanding coverage and hide</li> <li>• Cures to a hard, furniture-quality finish</li> <li>• Low VOC</li> <li>• Engineered with Gennex® Color Technology</li> </ul>
<p><b>N794:</b> A premium quality interior/exterior waterborne alkyd high gloss enamel. It provides a durable, tough high gloss finish that stands up to repeated washing.</p> <p><b>Available Colors:</b> White, Black. Tint bases available for all colors.</p>	<ul style="list-style-type: none"> <li>• Exceptional application and feel</li> <li>• Outstanding coverage and hide</li> <li>• Cures to a hard, furniture-quality finish</li> <li>• Low VOC</li> <li>• Engineered with Gennex® Color Technology</li> </ul>

CDPH standard method for the testing and evaluation of VOC emission from indoor sources using environmental test standard.

Please note that not all Benjamin Moore & Co. products are available in all areas due to VOC regulations. Please check with your local retailer before making your selection.

†For the most up-to-date MPI specifications, visit [www.mpi.net](http://www.mpi.net)



# Ceiling Paints



## Waterborne Ceiling Paint

An ultra-flat finish uniquely formulated to consistently deliver a beautiful ceiling in any color by minimizing imperfections and glare.

Code	Product	Recoat Time	Vol. Sol. (± 2%)	Cov. (Sq. Ft.)	VOC Range	Specifications†
0508	Waterborne Ceiling Paint - Ultra Flat	1-2 hours	40.0	400-450	0 g/L	Eligible for LEED® v4 credit; Qualifies for CHPS low emitting credit; CDPH v1 Emission certified

Product Description	Features/Benefits
<p><b>0508:</b> Waterborne Ceiling Paint is the flattest finish offered by Benjamin Moore that hides common ceiling imperfections for a look that is virtually flawless. It delivers ample open time resulting in minimal lapping.</p> <p><b>Available Colors:</b> White. Tint bases available for all colors.</p>	<ul style="list-style-type: none"> <li>• Ultra flat finish hides imperfections and reduces glare</li> <li>• Formulated to minimize spatter for easy clean up</li> <li>• Dries quick for fast recoat and job turnaround</li> <li>• Engineered with Gennex® Color Technology</li> </ul>



## Muresco® Ceiling Paint

A trusted classic for creating quality white ceilings.

Code	Product	Recoat Time	Vol. Sol. (± 2%)	Cov. (Sq. Ft.)	VOC Range	Specifications†
0258	Muresco® Ceiling Paint - Flat	2 hours	30.0	400-450	< 50 g/L	Eligible for LEED® v4 credit; Qualifies for CHPS low emitting credit; CDPH v1 Emission certified

Product Description	Features/Benefits
<p><b>0258:</b> Muresco is a trusted, easy to use staple for classic white ceilings that achieves a uniform flat finish.</p> <p><b>Available Colors:</b> White.</p>	<ul style="list-style-type: none"> <li>• Flat finish diffuses light and obscures minor imperfections</li> <li>• Rolls or sprays easily to increase efficiency</li> <li>• Extended open time avoids lap marks</li> <li>• Spatter-resistant</li> </ul>

# Specialty Coatings



## Satin Impervo® Enamel

A premium-quality low lustre, alkyd paint with superb leveling and hiding qualities.

Code	Product	Recoat Time	Vol. Sol. (± 2%)	Cov. (Sq. Ft.)	VOC Range	Specifications†
C235	Satin Impervo® Enamel - Low Lustre	12 hours	52.0	500-550	> 250 g/L	-

Product Description	Features/Benefits
<p><b>C235:</b> A premium quality alkyd paint offering easy application, sag resistance and one or two coat coverage, if the surface is in good condition and color change is not extreme.</p> <p><b>Available Colors:</b> White, Black. Tint bases available for all colors.</p>	<ul style="list-style-type: none"> <li>• Excellent sag resistance</li> <li>• Easy application with brush, roller, or spray gun</li> <li>• Premium flow and leveling</li> <li>• Great hide</li> </ul>



## Kitchen & Bath Interior Paint

Premium-quality satin finish paint designed for use in kitchens and bathrooms.

Code	Product	Recoat Time	Vol. Sol. (± 2%)	Cov. (Sq. Ft.)	VOC Range	Specifications†
W322	Kitchen & Bath Interior Paint - Satin	4 hours	39.0	400-450	< 50 g/L	-

Product Description	Features/Benefits
<p><b>W322:</b> A premium paint specially formulated to provide a mildew-resistant finish for increased durability.</p> <p><b>Available Colors:</b> White. Tint bases available for all colors.</p>	<ul style="list-style-type: none"> <li>• Applies easily and smoothly</li> <li>• Exceptional durability and color retention</li> <li>• Provides a mildew-resistant coating, even in humid conditions</li> <li>• Low-VOC</li> <li>• Engineered with Genex® Color Technology</li> </ul>



# Primer

## PVA Primer/Finish

An economical, easy-to-apply interior PVA primer/finish formulated to deliver good performance.

Code	Product	Recoat Time	Vol. Sol. (± 2%)	Cov. (Sq. Ft.)	VOC Range	Specifications†
100	PVA Primer/Finish	4 hours	30.0	300-400	< 50 g/L	MPI 50, Eligible for LEED® v4 credit, Qualifies for CHPS low emitting credit, CDPH v1 Emission certified*

Product Description	Features/Benefits
<p><b>100:</b> A fast drying interior PVA primer and finish for new drywall and thoroughly cured plaster. Ideal for both high volume production and property managers, it touches up well and dries to a uniform flat finish to hide imperfections. It is not intended for areas that require frequent washing.</p> <p><b>Available Colors:</b> White</p>	<ul style="list-style-type: none"> <li>• Uniform flat finish</li> <li>• Good touch up</li> <li>• Resists spattering</li> </ul>

Refer to TDS & SDS for additional information.

\*CDPH standard method for the testing and evaluation of VOC emission from indoor sources using environmental test standard.



# Interior Paint

## Tough Walls Acrylic Paint

Combining value with quality to deliver long-lasting results.

Code	Product	Recoat Time	Vol. Sol. (± 2%)	Cov. (Sq. Ft.)	VOC Range	Specifications†
N16	Tough Walls Acrylic Paint & Primer - Flat	2-3 hours	39.0	300-400	< 50 g/L	MPI 53; Eligible for LEED® v4 credit; Qualifies for CHPS low emitting credit; CDPH v1 Emission certified*
N34	Tough Walls Acrylic Paint & Primer - Eggshell	2-4 hours	40.0	350-450	< 50 g/L	MPI 52; Eligible for LEED® v4 credit; Qualifies for CHPS low emitting credit; CDPH v1 Emission certified*
N60	Tough Walls Acrylic Paint & Primer - Satin/Pearl	4 hours	39.0	400-450	< 50 g/L	MPI 43; Eligible for LEED® v4 credit; Qualifies for CHPS low emitting credit; CDPH v1 Emission certified*
N22	Tough Walls Acrylic Paint & Primer - Semi-Gloss	4 hours	37.0	400-450	< 50 g/L	MPI 54; Eligible for LEED® v4 credit; Qualifies for CHPS low emitting credit; CDPH v1 Emission certified*

Product Description	Features/Benefits
<p><b>N16, N34, N60, N22:</b> Waterborne acrylic, interior paints designed for quality, long-lasting durability, and value. This value engineered paint is also easy to apply.</p> <p><b>Available Colors:</b> White, Pastel Base, Tint Base, Accent Base</p>	<ul style="list-style-type: none"> <li>• Quick drying</li> <li>• Good coverage and hide</li> <li>• Durable, washable, and long lasting</li> <li>• Low VOC</li> </ul>

Refer to TDS & SDS for additional information.

\*CDPH standard method for the testing and evaluation of VOC emission from indoor sources using environmental test standard.

Please note that not all Benjamin Moore & Co. products are available in all areas due to VOC regulations. Please check with your local retailer before making your selection.

†For the most up-to-date MPI specifications, visit [www.mpi.net](http://www.mpi.net)





# Interior Paint

## Super Kote 5000® Interior Paint

Premium commercial paint with low spatter and easy application, designed to allow professional painters to move quickly.

Code	Product	Recoat Time	Vol. Sol. (± 2%)	Cov. (Sq. Ft.)	VOC Range	Specifications†
28	Super Kote 5000® Interior Paint - Flat	4 hours	34.0	300-400	< 50 g/L	MPI 53
1130	Super Kote 5000® Interior Paint - Low-Sheen Eggshell	4 hours	30.0	300-400	< 100 g/L	MPI 44
30	Super Kote 5000® Interior Paint - Eggshell	4 hours	35.0	300-400	< 50 g/L	MPI 44
1160	Super Kote 5000® Interior Paint - Satin	4 hours	30.0	350-450	< 100 g/L	MPI 43
32	Super Kote 5000® Interior Paint - Semi-Gloss	4 hours	34.0	300-400	< 50 g/L	-

Product Description	Features/Benefits
<p><b>28, 1130, 30, 1160, 32:</b> Super Kote 5000® is designed for commercial projects—when getting the job done quickly is a priority. With low spatter and easy application, this premium-quality, vinyl-acrylic formula delivers dependable performance and productivity.</p> <p><b>28 Available Colors:</b> White, Black. Tint bases available for all colors.</p> <p><b>1130, 30, 1160, 32 Available Colors:</b> White. Tint bases available for all colors.</p>	<ul style="list-style-type: none"> <li>• Quick-drying</li> <li>• High hide</li> <li>• Low spatter</li> <li>• Smooth leveling</li> <li>• Easy application</li> </ul>

Refer to TDS & SDS for additional information.



# Interior Paint

## Coronado® Door, Trim & Cabinet Enamel

A durable enamel finish that delivers the desired characteristics of a conventional alkyd paint in a tough satin or semi-gloss finish that stands up to repeated washing and it's easy to clean up.

Code	Product	Recoat Time	Vol. Sol. (± 2%)	Cov. (Sq. Ft.)	VOC Range	Specifications†
1203	Coronado® Door, Trim & Cabinet Enamel - Satin	4 hours	38.0	400-450	< 50 g/L	MPI 168; Eligible for LEED® v4 credit; Qualifies for CHPS low emitting credit; CDPH v1 Emission certified*
1204	Coronado® Door, Trim & Cabinet Enamel - Semi-Gloss	4 hours	40.0	400-450	< 50 g/L	MPI 169; Eligible for LEED® v4 credit; Qualifies for CHPS low emitting credit; CDPH v1 Emission certified*

Product Description	Features/Benefits
<p><b>1203, 1204:</b> Coronado® Door, Trim &amp; Cabinet Enamel is the ideal choice for interior doors, trim, cabinets and walls. It delivers the desired flow and leveling characteristics of conventional alkyd paints, while also providing a durable satin or semi-gloss finish that stands up to repeated washing.</p> <p><b>Available Colors:</b> White. Tint bases available for all colors.</p>	<ul style="list-style-type: none"> <li>• Smooth durable enamel finish</li> <li>• Waterborne formula</li> <li>• Great flow and leveling</li> <li>• Excellent adhesion</li> <li>• Good hide</li> </ul>

Refer to TDS & SDS for additional information.

\*CDPH standard method for the testing and evaluation of VOC emission from indoor sources using environmental test standard.



# Interior Paint

## Super Kote® 3000 Interior Paint

Optimal balance between performance and value, delivering exceptional touch-ups and washability in a low-VOC formula (flat and eggshell).

Code	Product	Recoat Time	Vol. Sol. (± 2%)	Cov. (Sq. Ft.)	VOC Range	Specifications†
301	Super Kote® 3000 Interior Paint - Flat	4 hours	30.0	350-450	< 50 g/L	-
302	Super Kote® 3000 Interior Paint - Eggshell	4 hours	30.0	300-400	< 50 g/L	-
304	Super Kote® 3000 Interior Paint - Semi-Gloss	4 hours	28.0	300-400	< 100 g/L	-

Product Description	Features/Benefits
<p><b>301, 302, 304:</b> Super Kote® 3000 delivers dependable touch-ups and good hide. Designed to facilitate getting the job done right, this low-VOC (flat and eggshell) product is ideal for new work or re-paints, including commercial, residential, and new construction projects.</p> <p><b>Available Colors:</b> White. Tint bases available for all colors.</p>	<ul style="list-style-type: none"> <li>• Exceptional touch-up</li> <li>• Durable, washable finish</li> <li>• Excellent hide</li> <li>• High production speed</li> <li>• Low VOC (flat and eggshell)</li> </ul>

Refer to TDS & SDS for additional information.



# Interior Paint

## Coronado® FinalTouch® Wall & Ceiling Paint

Formulated to provide perfect touch-up and final finishing for all interior new construction wall surfaces.

Code	Product	Recoat Time	Vol. Sol. (± 2%)	Cov. (Sq. Ft.)	VOC Range	Specifications†
136	FinalTouch® Wall Paint - Flat	4 hours	34.0	300-400	< 50 g/L	-

Product Description	Features/Benefits
---------------------	-------------------

### 136:

FinalTouch® is designed to feather smoothly with a fine nap roller to provide invisible touch-ups. It is an ideal flat coating for new construction, general maintenance, apartments, and budget-minded consumers.

- Excellent touch-up
- Fast-drying
- Resists spattering

**Available Colors:** White. Pastel and tint base available.

Refer to TDS & SDS for additional information.



# Exterior Paint

## Cryli Cote® 100% Acrylic Exterior Paint

The right exterior paint for quality, durability, and value. With its 100% acrylic formula it delivers excellent adhesion and dries quickly.

Code	Product	Recoat Time	Vol. Sol. (± 2%)	Cov. (Sq. Ft.)	VOC Range	Specifications†
N10	Cryli Cote® 100% Acrylic Exterior Paint - Flat	4 hours	37.0	300-400	< 50 g/L	MPI 10
N410	Cryli Cote® 100% Acrylic Exterior Paint - Satin	4 hours	37.0	350-450	< 50 g/L	MPI 15
N2	Cryli Cote® 100% Acrylic Exterior Paint - Semi-Gloss	4 hours	37.0	350-450	< 50 g/L	MPI 11

Product Description	Features/Benefits
<p><b>N10, N410, N2:</b> Cryli Cote® combines value with quality by helping you deliver excellent results that last. It is engineered to help you complete exterior paint projects smoothly.</p> <p><b>Available Colors:</b> White. Tint bases available for all colors.</p>	<ul style="list-style-type: none"> <li>• 100% Acrylic</li> <li>• Excellent color retention</li> <li>• Protects against cracking and peeling</li> <li>• Provides a mildew-resistant coating</li> <li>• Excellent adhesion</li> </ul>

Refer to TDS & SDS for additional information.



# Multi-Substrate

## MultApply® Waterborne Acrylic Enamels

Coronado MultApply® Waterborne Acrylic Enamels are the go-to multi-substrate coatings for contractors seeking durable and easy-to-use products for both interior and exterior applications.

Code	Product	Recoat Time	Vol. Sol. (± 2%)	Cov. (Sq. Ft.)	VOC Range	Specifications†
1180	MultApply® Waterborne Acrylic Enamel - Gloss	2 hours	39.0	350-450	< 100 g/L	MPI 114, 154; Eligible for LEED® v4 credit; Qualifies for CHPS low emitting credit; CDPH v1 Emission certified*
1190	MultApply® Waterborne Acrylic Enamel - Semi-Gloss	4 hours	40.0	350-450	< 100 g/L	MPI 153

Product Description	Features/Benefits
<p><b>1180:</b> MultApply® Waterborne Acrylic Gloss Enamel is an interior/exterior finish, which is suitable for coating primed metal, wood, or masonry surfaces. The acrylic resin provides excellent color and gloss retention as well as tenacious adhesion properties.</p> <p><b>Available Colors:</b> White (Tintable) (1), Black (2), Battleship Gray (109), Safety Red (136), Safety Yellow (151), Silver Gray (201). Tint bases available for all colors.</p>	<ul style="list-style-type: none"> <li>• Easy-to-use</li> <li>• Quick drying</li> <li>• Excellent leveling</li> <li>• Interior/exterior</li> </ul>
<p><b>1190:</b> MultApply® Waterborne Acrylic Semi-Gloss Enamel is an interior/exterior finish, which is suitable for coating primed metal, wood, or masonry surfaces. The acrylic resin provides excellent color and gloss retention as well as tenacious adhesion properties.</p> <p><b>Available Colors:</b> White (Tintable) (1), White (11), Black (2). Tint bases available for all colors.</p>	<ul style="list-style-type: none"> <li>• Easy-to-use</li> <li>• Quick drying</li> <li>• Excellent leveling</li> <li>• Interior/exterior</li> </ul>

Refer to TDS & SDS for additional information.

\*CDPH standard method for the testing and evaluation of VOC emission from indoor sources using environmental test standard.

Please note that not all Benjamin Moore & Co. products are available in all areas due to VOC regulations. Please check with your local retailer before making your selection.

†For the most up-to-date MPI specifications, visit [www.mpi.net](http://www.mpi.net)



# Rust-Preventative

## Rust-A-Void™ Alkyd Polyurethane Enamels

Rust-A-Void™ Rust Preventative Polyurethane Enamels create an easy-to-apply, durable, rust-inhibitive film that prolongs the integrity of the substrate.

Code	Product	Recoat Time	Vol. Sol. (± 2%)	Cov. (Sq. Ft.)	VOC Range	Specifications†
R651	Rust-A-Void™ Alkyd Polyurethane Enamel - Satin	12 hours	54.0	350-450	< 400 g/L	-
R13*	Rust-A-Void™ Alkyd Polyurethane Enamel - Semi-Gloss	12 hours	51.0	350-450	< 400 g/L	-
R31*	Rust-A-Void™ Alkyd Polyurethane Enamel - Gloss	12 hours	52.0	350-450	< 400 g/L	MPI 48

Product Description	Features/Benefits
<p><b>R651:</b> Rust-A-Void™ Rust Preventative Polyurethane Enamels create an easy-to-apply, durable, rust-inhibitive film that helps prolong the integrity of the substrate. It is formulated to offer a high quality, durable satin enamel finish on interior or exterior metal surfaces where a rust preventative coating is needed.</p> <p><b>Available Colors:</b> White (Tintable) (1), Black (2), Duronodic Bronze (424), Tint Base (33), Accent Base (36)</p>	<ul style="list-style-type: none"> <li>• Durable, rust-preventive coating</li> <li>• Tenacious adhesion</li> <li>• Interior/exterior</li> </ul>
<p><b>R13*:</b> Rust-A-Void™ Rust Preventative Polyurethane Enamels create an easy-to-apply, durable, rust-inhibitive film that helps prolong the integrity of the substrate. It is formulated to offer a high quality, durable semi-gloss enamel finish on interior or exterior metal surfaces where a rust preventative coating is needed.</p> <p><b>Available Colors:</b> White (Tintable) (1). Tint bases available for all colors.</p>	<ul style="list-style-type: none"> <li>• Durable, rust-preventive coating</li> <li>• Tenacious adhesion</li> <li>• Interior/exterior</li> </ul>
<p><b>R31*:</b> Rust-A-Void™ Rust Preventative Polyurethane Enamels create an easy-to-apply, durable, rust-inhibitive film that helps prolong the integrity of the substrate. It is formulated to offer a high quality, durable gloss enamel finish on interior or exterior metal surfaces where a rust preventative coating is needed.</p> <p><b>Available Colors:</b> White (Tintable) (1), Black (2), Battleship Gray (109), Safety Red (136), Safety Blue (137), Safety Orange (139), Safety Yellow (151), Silver Gray (201). Tint bases available for all colors.</p>	<ul style="list-style-type: none"> <li>• Durable, rust-preventive coating</li> <li>• Tenacious adhesion</li> <li>• Interior/exterior</li> </ul>

\*Product available in lower-VOC formulation.

Refer to TDS & SDS for additional information.





# Masonry Coatings

## Coronado® Production Block Filler

Designed specifically for spray application to fill voids and create a smooth, uniform surface on interior masonry block.

Code	Product	Recoat Time	Vol. Sol. (± 2%)	Cov. (Sq. Ft.)	VOC Range	Specifications†
958	Coronado® Production Block Filler	8 hours	50.0	75-100	< 50 g/L	MPI 4; Eligible for LEED® v4 credit; Qualifies for CHPS low emitting credit; CDPH v1 Emission certified*

Product Description	Features/Benefits
<p><b>958:</b> Coronado® Block Filler is designed specifically for spray application to fill voids and create a smooth, uniform surface on interior masonry block. It is packaged at a sprayable viscosity and is formulated with raw materials selected to minimize tip clogging.</p> <p><b>Available Colors:</b> White.</p>	<ul style="list-style-type: none"> <li>• Creates a smooth, uniform surface</li> <li>• Formulated for minimal tip clogging</li> <li>• For application by airless spray</li> <li>• Can also be applied by brush</li> </ul>

Refer to TDS & SDS for additional information.

\*CDPH standard method for the testing and evaluation of VOC emission from indoor sources using environmental test standard.



# Masonry Coatings

## Coronado® Texcrete® Masonry Coatings

Includes an exterior hardscape waterproofer and exterior silicone-based water-repellent and sealer.

Code	Product	Recoat Time	Vol. Sol. (± 2%)	Cov. (Sq. Ft.)	VOC Range	Specifications†
194	Texcrete® Silicone Water Repellent	-	12.0	100-200	< 50 g/L	MPI 117
3194	Texcrete® WB Acrylic Masonry Waterproofer Smooth Finish	4 hours	39.0	90-110	< 100 g/L	-
3196	Texcrete® WB Acrylic Masonry Waterproofer Medium Finish	4 hours	53.0	90-110	< 50 g/L	MPI 42
3192	Texcrete® WB Acrylic Masonry Waterproofer Sand Finish	4 hours	45.0	90-110	< 100 g/L	-

Product Description	Features/Benefits
<p><b>194:</b> A clear, water-repellent sealer that produces a breathable barrier on masonry. This barrier prevents chlorine penetration and reduces cracking, dirt pickup, efflorescence, and damage from freezing/thawing cycles. Because it is clear, the sealer penetrates deep into substrates without changing their appearance.</p> <p><b>Available Colors:</b> Clear</p>	<ul style="list-style-type: none"> <li>• Clear, invisible barrier</li> <li>• Protects vertical and horizontal surfaces</li> <li>• Alkali-resistant</li> <li>• Non-flammable</li> </ul>
<p><b>3194, 3196, 3192:</b> High-build, low-VOC breathable waterproofing coatings designed for application by the professional contractor to above grade concrete and masonry structures. These coatings are specifically engineered to be applied direct-to-concrete and masonry surfaces without priming. They are designed to resist high pH surfaces and therefore can be applied direct to new concrete without extended curing and delays. These coatings pass the ASTM D6904 wind driven rain test and are resistant to salt spray, acid rain, and UV light tested in 1 pinhole-free coat. The breathable, high-build film allows moisture vapor to pass through without blistering or causing a loss of adhesion. Available in various textures, these products do not require a primer or filler on smooth masonry surfaces.</p> <p><b>3194, 3192 Available Colors:</b> White, Deep Base, Accent Base. <b>3196 Available Colors:</b> White</p>	<ul style="list-style-type: none"> <li>• Breathable, high-build film</li> <li>• Passes ASTM D6904 wind driven rain test and protects against salt spray, acid rain, and UV light</li> <li>• Allows moisture to pass through without blistering or loss of adhesion</li> <li>• Excellent durability</li> <li>• Provides a mildew-resistant coating</li> </ul>

Refer to TDS & SDS for additional information.



# Masonry Coatings

## Coronado® Elastite® Concrete Coatings

Designed to keep damaging water and moisture vapors out of commercial and residential structures, and to create a flexible waterproofing membrane that prohibits wind driven rain from entering through the coating film.

Code	Product	Recoat Time	Vol. Sol. (± 2%)	Cov. (Sq. Ft.)	VOC Range	Specifications†
160	Elastite® 10 Mil 100% Acrylic Elastomeric Coating	4 hours	53.0	160-175	< 50 g/L	-
162	Elastite® 20 Mil 100% Acrylic Elastomeric Coating	6 hours	54.0	75-85	< 50 g/L	-
166	Elastite® SUPER-STRETCH 20 Mil 100% Acrylic Elastomeric Coating	6 hours	52.0	75-85	< 50 g/L	MPI 38
48	Elastite® 100% Acrylic Masonry Sealer	6-8 hours	34.0	225-330	< 200 g/L	-

Product Description	Features/Benefits
<p><b>160, 162, 166:</b> Elastite® 100% Acrylic Elastomeric Coating cures harder than traditional elastomeric coatings on the outermost surface, giving this product much better resistance to dirt accumulation compared to traditional elastomerics. The coating remains flexible beneath the surface, bridging cracks and moving with the building.</p> <p><b>Available Colors:</b> White</p>	<ul style="list-style-type: none"> <li>• Flexible waterproofing membrane</li> <li>• 200% elongation rating (applicable lines: 160, 162)</li> <li>• 300% elongation rating (applicable lines: 166)</li> <li>• Protects against wind driven rain</li> <li>• Resists dirt pickup</li> </ul>
<p><b>48:</b> Designed to penetrate deeply into the pores of masonry surfaces to stop dusting and to form a foundation to support the Elastite® Coating System. An excellent chalk binding sealer resistant to the effects of alkali up to a pH of 13.</p> <p><b>Available Colors:</b> White</p>	<ul style="list-style-type: none"> <li>• Excellent chalk binding sealer</li> <li>• Alkali-resistant</li> <li>• Protects against wind driven rain</li> <li>• Resists dirt pickup</li> </ul>

Refer to TDS & SDS for additional information.



# Specialty Coatings

## Coronado® Dry Fall Coating

Designed for spray application to interior ceilings, walls, and structural members in commercial and institutional buildings, as the overspray dries to a dust before reaching the floor.

Code	Product	Recoat Time	Vol. Sol. (± 2%)	Cov. (Sq. Ft.)	VOC Range	Specifications†
105	Coronado® Dry Fall Coating Alkyd - Flat	4 hours	36.0	300-400	< 400 g/L	MPI 55
N110	Coronado® Dry Fall Coating Latex - Flat	1 hour	42.0	250-425	< 50 g/L	MPI 118; Eligible for LEED® v4 credit; Qualifies for CHPS low emitting credit; CDPH v1 Emission certified*
112	Coronado® Dry Fall Coating Latex - Semi-Gloss	4 hours	36.0	400-500	< 100 g/L	MPI 226

Product Description	Features/Benefits
<p><b>105:</b> Designed for the professional spray applicator for use in airless or conventional spray equipment. Atomized spray and bounce back flash-dry within an eight-foot fallout.</p> <p><b>Available Colors:</b> White</p>	<ul style="list-style-type: none"> <li>• High-hide</li> <li>• Quick-drying</li> <li>• Spray dust can be swept up, vacuumed, or blown away</li> <li>• Reduces the need to cover floors and equipment</li> </ul>
<p><b>N110, 112:</b> Formulated for spray application to interior ceilings, walls, and structural members in commercial and institutional buildings. The overspray dries to a dust before reaching the floor. This feature reduces the cost of masking and covering procedures.</p> <p><b>N110 Available Colors:</b> White, Black</p> <p><b>112 Available Colors:</b> White</p>	<ul style="list-style-type: none"> <li>• High-hide</li> <li>• Quick-drying</li> <li>• Spray dust can be swept up, vacuumed, or blown away</li> <li>• Reduces the need to cover floors and equipment</li> </ul>

Refer to TDS & SDS for additional information.

\*CDPH standard method for the testing and evaluation of VOC emission from indoor sources using environmental test standard.



# Specialty Coatings

## Coronado® Acrylic Knock Down

A high-solids knock down coating that yields a durable textured finish for public, commercial, hospitality or interior residential use.

Code	Product	Recoat Time	Vol. Sol. (± 2%)	Cov. (Sq. Ft.)	VOC Range	Specifications†
908	Coronado® Acrylic Knock Down - Flat	4-6 hours	46.0	100-200	< 50 g/L	-
918	Coronado® Acrylic Knock Down - Satin	4-6 hours	49.0	100-200	< 50 g/L	-

Product Description	Features/Benefits
<p><b>908, 918:</b> Coronado® Acrylic Knock Down is a high-solids coating designed for durable, textured finishes in public, commercial, and residential buildings. Ideal for use in remedial work on a wide variety of substrates to give surfaces a uniform, textured appearance that hides wear-and-tear.</p> <p><b>Available Colors:</b> White</p>	<ul style="list-style-type: none"> <li>• Durable, textured finish hides wear-and-tear</li> <li>• High-solids formula</li> <li>• Highly breathable coating</li> <li>• Provides a mildew-resistant finish</li> <li>• Uniform, textured appearance</li> <li>• Ideal for remedial work</li> </ul>

Refer to TDS & SDS for additional information.

# Primers



## Prime All® Multi-Surface Latex Primer Sealer

Designed for multiple interior and exterior surfaces, it is formulated to suppress most light stains and provide a mildew-resistant coating.

Code	Product	Recoat Time	Vol. Sol. (± 2%)	Cov. (Sq. Ft.)	VOC Range	Specifications†
AP-1000	Prime All® Multi-Surface Latex Primer Sealer	1 hour	35.0	400-450	< 50 g/L	MPI 6, 39, 137; Eligible for LEED® v4 credit; Qualifies for CHPS low emitting credit; CDPH v1 Emission certified

Product Description	Features/Benefits
<p><b>AP-1000:</b> Prime All® Multi-Surface Latex Primer Sealer is a high-quality primer with great flow and leveling. It has strong adhesion and sealing properties while drying to the touch in less than an hour.</p> <p><b>Available Colors:</b> White</p>	<ul style="list-style-type: none"> <li>• 100% acrylic</li> <li>• Powerful stain blocking</li> <li>• Low Voc</li> <li>• Dry to touch in less than 1 hour*</li> <li>• Spatter-resistant</li> <li>• Provides a mildew resistant coating</li> </ul>



## Aqua Lock® Plus Primer Sealer

A multi-purpose primer sealer for excellent everyday stain blocking on a variety of surfaces.

Code	Product	Recoat Time	Vol. Sol. (± 2%)	Cov. (Sq. Ft.)	VOC Range	Specifications†
AQ-0XXX	Aqua Lock® Plus Primer Sealer	1 hour	41.0	300-400	< 50 g/L	MPI 39, Eligible for LEED® v4 credit; Qualifies for CHPS low emitting credit; CDPH v1 Emission certified

Product Description	Features/Benefits
<p><b>AQ-0XXX:</b> Aqua Lock® Plus is a multi-purpose, 100% acrylic, water-based primer sealer for excellent everyday stain blocking on a variety of surfaces. It adheres to interior and exterior surfaces and can be top coated with latex or oil-based coatings.</p> <p><b>Available Colors:</b> White, Black, Deep Base</p>	<ul style="list-style-type: none"> <li>• 100% acrylic</li> <li>• Blocks tough stains</li> <li>• Provides a mildew-resistant coating</li> <li>• Quick-drying</li> <li>• Top coat in 1 hour</li> </ul>

\*For additional product information, including preparation and application, refer to <https://www.benjaminmoore.com/en-us/documentation> for TDS.

# Primers



## Stix® Waterborne Bonding Primer

Premium-quality, acrylic-urethane primer with tenacious adhesion to the most challenging surfaces.

Code	Product	Recoat Time	Vol. Sol. (± 2%)	Cov. (Sq. Ft.)	VOC Range	Specifications†
<b>SXA-110</b>	<b>Stix® Waterborne Bonding Primer</b>	3-4 hours	40.0	300-400	< 100 g/L	Eligible for LEED® v4 credit; Qualifies for CHPS low emitting credit; CDPH v1 Emission certified

Product Description	Features/Benefits
<p><b>SXA-110:</b> Premium-quality, acrylic-urethane primer with tenacious adhesion to the most challenging surfaces, including glossy tile, PVC, vinyl, plastic, glass, glazed block, glossy paint, pre-coated siding, fiberglass, and galvanized metals.</p> <p><b>Available Colors:</b> White</p>	<ul style="list-style-type: none"> <li>• Bonds to hard-to-coat surfaces</li> <li>• Cures in temperatures as low as 35°F</li> <li>• Creates an extremely hard film</li> <li>• Excellent enamel holdout</li> <li>• Can be top coated with acrylic, alkyd, urethane, epoxy finishes and more</li> </ul>



## Prime Lock Plus Primer/Sealer

A fast-drying alkyd resin stain blocker for priming over plaster, wood, drywall, and previously painted or varnished surfaces.

Code	Product	Recoat Time	Vol. Sol. (± 2%)	Cov. (Sq. Ft.)	VOC Range	Specifications†
<b>PS-8100*</b>	<b>Prime Lock Plus Primer/Sealer</b>	2 hours	58.0	300-400	< 350 g/L	MPI 69

Product Description	Features/Benefits
<p><b>PS-8100*:</b> Prime Lock Plus Alkyd Primer/Sealer is a high hiding, alkyd-based primer and stain blocker for interior and exterior surfaces. Excellent for priming over plaster, drywall, wood and previously painted or varnished surfaces. It can be top coated with any oil or latex paint. It provides excellent enamel holdout and will not raise wood grain.</p> <p><b>Available Colors:</b> White</p>	<ul style="list-style-type: none"> <li>• High-hiding, multi-purpose alkyd primer sealer</li> <li>• Strong adhesion to glossy surfaces</li> <li>• Fast-drying</li> <li>• Prevents bleed-through</li> <li>• Excellent enamel holdout</li> </ul>

\*Product available in lower-VOC formulation.

†For additional product information, including preparation and application, refer to <https://www.benjaminmoore.com/en-us/documentation> for TDS.



# Primers



## Reduced Odor\* Oil-Based Primer

A modified synthetic alkyd primer sealer formulated with a solvent that produces lower odor levels compared to other Insl-X® alkyd primers.

Code	Product	Recoat Time	Vol. Sol. (± 2%)	Cov. (Sq. Ft.)	VOC Range	Specifications†
RO-3000	Reduced Odor* Oil-Based Primer	2 hours	54.0	325-425	< 350 g/L	MPI 45

Product Description	Features/Benefits
<p><b>RO-3000:</b> Reduced Odor Oil-Based Primer is a modified synthetic alkyd primer sealer formulated with a solvent that produces lower odor levels compared to other Insl-X® alkyd primers. This stain-blocking primer dries to the touch in 30 minutes and is effective at sealing water stains, tannin, smoke stains and more. It can also be used on exterior masonry and to spot prime exterior wood, shingles, and composition siding.</p> <p><b>Available Colors:</b> White</p>	<ul style="list-style-type: none"> <li>• Blocks stains</li> <li>• Excellent adhesion</li> <li>• Seals porous surfaces</li> <li>• Quick-dry formula allows for same-day priming and top coating*</li> <li>• Top coat with alkyd or latex paints of any sheen</li> </ul>



## High Build Peel Bonding Primer

A water-based, acrylic primer designed to smooth, seal, and help extend the life of weathered surfaces.

Code	Product	Recoat Time	Vol. Sol. (± 2%)	Cov. (Sq. Ft.)	VOC Range	Specifications†
BP-1100	High Build Peel Bonding Primer	2 hours	41.0	150-350	< 50 g/L	-

Product Description	Features/Benefits
<p><b>BP-1100:</b> High Build Peel Bonding Primer is designed to smooth and seal weathered surfaces with peeling, cracking or chalking paint. Ideal for wood, galvanized metal or masonry surfaces, this water-based acrylic primer applies as a milky white color for ease of visibility and can be applied up to 20 mils wet to ensure a smooth surface.</p> <p><b>Available Colors:</b> White</p>	<ul style="list-style-type: none"> <li>• Glues down and stops peeling paint</li> <li>• Remains flexible over time</li> <li>• Provides a mildew-resistant finish</li> <li>• Seals and prevents cracking</li> </ul>

\*Lower odor compared to Insl-X® alkyd primers

†For additional product information, including preparation and application, refer to <https://www.benjaminmoore.com/en-us/documentation> for TDS.

# Primers



## Block Out® Exterior Tannin Blocking Primer

A multi-purpose latex primer that blocks tannin stains on exterior wood, as well as primes exterior metal and masonry surfaces.

Code	Product	Recoat Time	Vol. Sol. (± 2%)	Cov. (Sq. Ft.)	VOC Range	Specifications†
TB-2100	Block Out® Exterior Tannin Blocking Primer	4 hours	37.0	300-400	< 100 g/L	-

Product Description	Features/Benefits
<p><b>TB-2100:</b> Block Out® Exterior Tannin Blocking Primer is designed for use as a multi-purpose latex exterior whole-house primer. Block Out excels at priming exterior wood and is formulated for use on metal and masonry surfaces, siding or most exterior substrates. Its latex formula blocks tannin stains on all new and weathered wood surfaces and can be top coated with latex or alkyd finish coats.</p> <p><b>Available Colors:</b> White</p>	<ul style="list-style-type: none"> <li>• Acrylic latex</li> <li>• Our best tannin-blocking acrylic primer</li> <li>• Formulated for exterior wood, metal, and masonry</li> <li>• Can be used on new or weathered wood</li> <li>• Top coat with latex or alkyd paints</li> </ul>



## High Build Interior Latex Primer

An interior latex primer formulated to provide a smooth, uniform finish on new drywall, composition board, and cured plaster.

Code	Product	Recoat Time	Vol. Sol. (± 2%)	Cov. (Sq. Ft.)	VOC Range	Specifications†
HB-2100	High Build Interior Latex Primer	4 hours	32.0	80-200	< 50 g/L	Eligible for LEED® v4 credit; CDPH v1 Emission certified, Qualifies for CHPS low emitting credit

Product Description	Features/Benefits
<p><b>HB-2100:</b> Insl-X® High Build Primer is an interior latex primer formulated to provide a smooth, uniform finish on new drywall, composition board, and cured plaster. When sprayed, it can replace a traditional skim coat to achieve a Level 5 finish, addressing the porosity differences between drywall paper and joint compound, and minimize minor surface imperfections including paper fuzz, minor sanding grooves, nicks and pinholes. It can be sanded easily and recoated in as little as 4 hours.</p> <p><b>Available Colors:</b> White</p>	<ul style="list-style-type: none"> <li>• Provides a smooth base for a uniform finish</li> <li>• Minimizes minor surface imperfections</li> <li>• Can be used to achieve a Level 5 finish</li> <li>• Minimizes joint banding or photographing</li> <li>• Can be applied up to 20 mils</li> <li>• Easy to sand</li> </ul>

\*For additional product information, including preparation and application, refer to <https://www.benjaminmoore.com/en-us/documentation> for TDS.

# Primers



## Vapor Barrier Primer/Sealer

A specially designed interior latex primer/sealer that provides a film with low vapor permeability.

Code	Product	Recoat Time	Vol. Sol. (± 2%)	Cov. (Sq. Ft.)	VOC Range	Specifications†
VB-5000	Vapor Barrier Primer/Sealer	2 hours	34.0	400-450	< 50 g/L	MPI 61

Product Description	Features/Benefits
<p><b>VB-5000:</b> Specially designed as an interior latex primer/sealer, Insl-X® Vapor Barrier provides a film with low vapor permeability and acts as a moisture vapor barrier when applied on interior walls and ceilings. Ideal for wallboard and plaster surfaces, this primer/sealer dries quickly while offering good adhesion and excellent holdout.</p> <p><b>Available Colors:</b> White</p>	<ul style="list-style-type: none"> <li>• Provides a Class II Vapor Barrier</li> <li>• Excellent holdout</li> <li>• Can be used under latex or solvent-based paints</li> </ul>

\*For additional product information, including preparation and application, refer to <https://www.benjaminmoore.com/en-us/documentation> for TDS.

# Floor Coatings



## GarageGuard®

A water-based, catalyzed epoxy garage floor coating that delivers outstanding chemical, abrasion, and impact resistance.

Code	Product	Recoat Time	Vol. Sol. (± 2%)	Cov. (Sq. Ft.)	VOC Range	Specifications†
EGG-XXX	GarageGuard®	8 hours	42.0	250-300	< 250 g/L	-

Product Description	Features/Benefits
<p><b>EGG-XXX:</b> GarageGuard® is a water-based, catalyzed epoxy that delivers outstanding chemical, abrasion, and impact resistance in a durable, semi-gloss coating. Ideal for garage floors, basement floors, and other concrete surfaces. GarageGuard® is cross-linked for long-lasting hardness and chemical resistance.</p> <p><b>Available Colors:</b> Showroom Gray, Desert Sand, Tint Base, Neutral Base</p>	<ul style="list-style-type: none"> <li>• Waterborne 2-part epoxy</li> <li>• Durable semi-gloss finish</li> <li>• Will not lift existing coatings</li> <li>• No hot tire pickup</li> <li>• Recoat in 8 hours</li> <li>• Park vehicles in 3-5 days*</li> </ul>



## Hot Trax®

A high-performance, ready-to-use acrylic concrete and garage floor coating that resists hot tire pickup and marring.

Code	Product	Recoat Time	Vol. Sol. (± 2%)	Cov. (Sq. Ft.)	VOC Range	Specifications†
HTF-XXX	Hot Trax®	24 hours	39.0	300-400	< 50 g/L	-

Product Description	Features/Benefits
<p><b>HTF-XXX:</b> Hot Trax® is a high-performance, ready-to-use acrylic concrete and garage floor coating that resists hot tire pickup and marring common to driveways and garage floors. Hot Trax seals and protects concrete from chemicals, water, oil, and grease. This durable, low-satin finish resists cracking and can also be used on exterior concrete, masonry, stucco, cinder block, and brick.</p> <p><b>Available Colors:</b> Tintable White, Silver Gray, Light Gray, Accent Base</p>	<ul style="list-style-type: none"> <li>• Low VOC</li> <li>• Resists hot tire pickup</li> <li>• Interior or exterior use</li> <li>• Recoat in 24 hours</li> <li>• Park vehicles in 5-7 days*</li> </ul>

\*For additional product information, including preparation and application, refer to <https://www.benjaminmoore.com/en-us/documentation> for TDS.

Please note that not all Benjamin Moore & Co. products are available in all areas due to VOC regulations. Please check with your local retailer before making your selection.

†For the most up-to-date MPI specifications, visit [www.mpi.net](http://www.mpi.net)

# Floor Coatings



## Tough Shield® Floor and Patio

A waterborne, acrylic enamel designed to produce a rugged, durable satin finish for interior and exterior floors and patios.

Code	Product	Recoat Time	Vol. Sol. (± 2%)	Cov. (Sq. Ft.)	VOC Range	Specifications†
CTS-3XXX	Tough Shield® Floor and Patio	4-12 hours	40.0	400-500	< 100 g/L	-

Product Description	Features/Benefits
<p><b>CTS-3XXX:</b> Tough Shield® Floor and Patio Coating is a waterborne, acrylic enamel designed to produce a rugged, durable satin finish with good abrasion resistance. For use on interior and exterior floors and patios, and a variety of other substrates.</p> <p><b>Available Colors:</b> Tintable White, Black, Gray Pearl, Light Gray, Tile Red, Desert Sand, Saddle Brown, Tint Base, Deep Base, Neutral Base</p>	<ul style="list-style-type: none"> <li>• Excellent durability</li> <li>• 100% acrylic enamel formula</li> <li>• Good abrasion resistance</li> <li>• Excellent wearing qualities</li> <li>• For interior or exterior use</li> </ul>



## Sure Step® Acrylic Anti-Slip Coating

An acrylic floor coating formulated with a special anti-slip aggregate for a durable, skid-resistant flat finish.

Code	Product	Recoat Time	Vol. Sol. (± 2%)	Cov. (Sq. Ft.)	VOC Range	Specifications†
SU-0XXX*	Sure Step® Acrylic Anti-Slip Coating	8 hours	38.0	80-120	< 150 g/L	-

Product Description	Features/Benefits
<p><b>SU-0XXX:</b> Sure Step® Acrylic Anti-Slip Coating provides a durable, skid-resistant flat finish for interior or exterior application. Imparts excellent color retention, abrasion resistance, and resistance to ponding water. Sure Step is water-reduced, which allows for fast-drying, easy application, and easy clean up.</p> <p><b>Available Colors:</b> Tintable White, Gray Pearl, Light Gray, Tile Red, Pine Green, Desert Sand, Saddle Brown, Accent Base</p>	<ul style="list-style-type: none"> <li>• High traffic resistance</li> <li>• Ideal for stairs, walkways, patios, and more</li> <li>• Fast-drying</li> <li>• Durable</li> <li>• Easy application</li> <li>• Interior/exterior use</li> <li>• Fills and seals minor surface cracks</li> </ul>

\*Product available in lower-VOC formulation.

†For additional product information, including preparation and application, refer to <https://www.benjaminmoore.com/en-us/documentation> for TDS.



# Floor Coatings

## Insl-X® Decorative Floor Flakes

Transform any concrete floor into a beautiful surface with Insl-X® Decorative Floor Flakes.

Code	Product	Recoat Time	Vol. Sol. (± 2%)	Cov. (Sq. Ft.)	VOC Range	Specifications†
EGF-XXX	Decorative Floor Flakes	-	-	20-150	-	-

Product Description	Features/Benefits
<p><b>EGF-XXX:</b> Easy-to-use and available in seven different color combinations, these flakes can help disguise surface imperfections and help hide dirt.</p> <p><b>Available Colors:</b> Blue Blend, Red Blend, Brown Blend, Gray Blend, Black, Silver Metallic, Gold Metallic</p>	<ul style="list-style-type: none"> <li>• Colorfast, UV stable pigments</li> <li>• Optimal flexibility and strength</li> <li>• Easy-to-use sprinkle top</li> </ul>

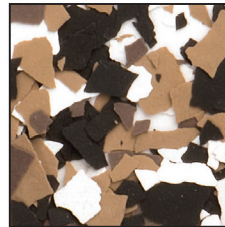
### Colors:



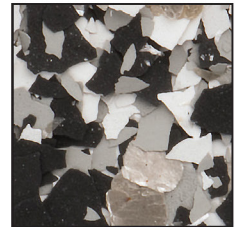
**Blue Blend**  
(EGF601099)



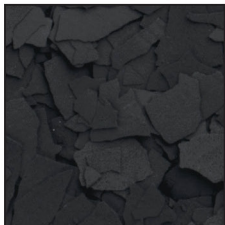
**Red Blend**  
(EGF700099)



**Brown Blend**  
(EGF800099)



**Gray Blend**  
(EGF900099)



**Black**  
(EGF701099)



**Silver Metallic**  
(EGF801099)



**Gold Metallic**  
(EGF901099)

\*For additional product information, including preparation and application, refer to <https://www.benjaminmoore.com/en-us/documentation> for TDS.

Please note that not all Benjamin Moore & Co. products are available in all areas due to VOC regulations. Please check with your local retailer before making your selection.

†For the most up-to-date MPI specifications, visit [www.mpi.net](http://www.mpi.net)

# Masonry Coatings



## TuffCrete® Concrete Coatings

A collection of stains and waterproofers that repel water, add color, and beautify a variety of masonry surfaces.

Code	Product	Recoat Time	Vol. Sol. (± 2%)	Cov. (Sq. Ft.)	VOC Range	Specifications†
CST-2XXX*	<b>TuffCrete® Waterborne Acrylic Concrete Stain</b>	4 hours	30.0	450-550	< 250 g/L	MPI 58
CST-5XXX	<b>TuffCrete® Solvent Acrylic Concrete Waterproofing Stain</b>	2 hours	26.0	300-400	> 550 g/L	MPI 58, 104

Product Description	Features/Benefits
<p><b>CST-2XXX:</b> TuffCrete® Waterborne Acrylic Concrete Stain is a water-reduced acrylic concrete coating designed for application to interior or exterior masonry surfaces. It can be applied in one coat as a stain, or in two coats for an opaque finish.</p> <p><b>Available Colors:</b> Tintable White, Clear (High Gloss), Gray Pearl, Light Gray, Tile Red, Desert Sand, Saddle Brown, Deep Base, Neutral Base</p> <p>*Product available in lower-VOC formulation.</p>	<ul style="list-style-type: none"> <li>• Waterborne acrylic formula</li> <li>• Color fade resistance</li> <li>• Fast-drying</li> <li>• Rugged, durable finish</li> <li>• Resists detergents, oils, grease, and scrubbing</li> <li>• For interior or exterior masonry surfaces</li> </ul>
<p><b>CST-5XXX:</b> TuffCrete® Solvent Acrylic Concrete Waterproofing Stain is a solvent-borne acrylic concrete stain designed for deep penetration into concrete surfaces. With excellent adhesion, this product delivers a durable low-sheen finish that helps to hide surface defects. It can be applied in one coat as a stain, or in two coats for an opaque finish.</p> <p><b>Available Colors:</b> Clear (High Gloss), Tintable White, Gray Pearl, Light Gray, Tile Red, Terracotta, Desert Sand, Saddle Brown, Neutral Base</p>	<ul style="list-style-type: none"> <li>• Excellent adhesion</li> <li>• Durable low-sheen finish</li> <li>• Color fade resistance</li> <li>• Quick-drying</li> <li>• Deep concrete penetration</li> </ul>

\*For additional product information, including preparation and application, refer to <https://www.benjaminmoore.com/en-us/documentation> for TDS.



# Masonry Coatings



## WaterBlock® Acrylic Masonry Waterproofer

Designed to seal interior and exterior masonry surfaces such as basement walls, foundations, and retaining walls.

Code	Product	Recoat Time	Vol. Sol. (± 2%)	Cov. (Sq. Ft.)	VOC Range	Specifications†
AMW-1000	WaterBlock® Acrylic Masonry Waterproofer	4 hours	45.0	75-100	< 100 g/L	-

Product Description	Features/Benefits
<p><b>AMW-1000:</b> WaterBlock® Acrylic Masonry Waterproofer is designed to seal interior and exterior masonry surfaces such as basement walls, foundations, and retaining walls. WaterBlock is alkali-resistant and provides positive sealing and waterproofing over bare concrete block, brick, stucco, or tilt-up concrete walls.</p> <p><b>Available Colors:</b> White</p>	<ul style="list-style-type: none"> <li>• Seals vertical masonry surfaces</li> <li>• Withstands up to 12 psi hydrostatic pressure (when used properly)</li> <li>• Provides a mold- and mildew-resistant coating</li> <li>• Alkali-resistant*</li> </ul>



## Insl-X® Multi-Surface Waterproofer

A penetrating, siloxane-based water repellent that protects and extends the life of many exterior surfaces.

Code	Product	Recoat Time	Vol. Sol. (± 2%)	Cov. (Sq. Ft.)	VOC Range	Specifications†
WPS-1000	Multi-Surface Waterproofer	-	< 10	50-300	< 50 g/L	-

Product Description	Features/Benefits
<p><b>WPS-1000:</b> Multi-Surface Waterproofer is a penetrating, siloxane-based water repellent. Once fully absorbed and dry, this clear waterproofer will seal and protect the surface without changing its visual appearance or texture.</p> <p><b>Available Colors:</b> Clear</p>	<ul style="list-style-type: none"> <li>• Protects and seals: wood, concrete, stucco, brick, masonry</li> <li>• Penetrating siloxane-based formula</li> <li>• Dries clear with no visible change to substrate</li> <li>• Easy soap and water clean-up</li> </ul>

\*For additional product information, including preparation and application, refer to <https://www.benjaminmoore.com/en-us/documentation> for TDS.

Please note that not all Benjamin Moore & Co. products are available in all areas due to VOC regulations. Please check with your local retailer before making your selection.

†For the most up-to-date MPI specifications, visit [www.mpi.net](http://www.mpi.net)

# Swimming Pool Paints



## Insl-X® Swimming Pool Paints

A collection of four pool paint technologies to meet the needs of almost any pool painting situation.

Code	Product	Recoat Time	Vol. Sol. (± 2%)	Cov. (Sq. Ft.)	VOC Range	Specifications†
WR-10XX	Waterborne Swimming Pool Paint - Semi-Gloss	4 hours	36.0	300-400	< 350 g/L	-
RP-27XX	Rubber Based Swimming Pool Paint - Satin	12-24 hours	60.0	400-500	< 350 g/L	-
CR-26XX	Chlorinated Rubber Swimming Pool Paint	24 hours	39.0	250-300	> 550 g/L	-
IG-40XX	Epoxy Swimming Pool Paint	3 hours	66.0	350-400	< 350 g/L	-

Product Description	Features/Benefits
<p><b>WR-10XX:</b> Waterborne Swimming Pool Paint can be applied to slightly damp surfaces, dries quickly for recoating, and withstands continuous submersion in fresh or salt water. Use Waterborne Swimming Pool Paint over most types of properly prepared existing pool paints, as well as bare concrete or plaster, marcite, gunite, and other masonry surfaces in sound condition.</p> <p><b>Available Colors:</b> White, Aquamarine, Ocean Blue, Royal Blue, Red, Black</p>	<ul style="list-style-type: none"> <li>• Acrylic emulsion pool paint</li> <li>• Can be applied over most types of properly prepared existing pool paints</li> <li>• Ideal for bare concrete or plaster, marcite, gunite, and other masonry surfaces</li> <li>• Long-lasting color and protection</li> <li>• Quick-drying</li> </ul>
<p><b>RP-27XX:</b> Rubber Based Swimming Pool Paint provides a durable low-sheen finish for use in residential and commercial concrete pools. It delivers excellent chemical and abrasion resistance and is suitable for use in fresh or salt water. Also acceptable for use in chlorinated pools. Use Rubber Based Swimming Pool Paint over previous chlorinated rubber paint or synthetic rubber-based pool paint or over bare concrete, marcite, gunite, or other masonry surfaces in good condition.</p> <p><b>Available Colors:</b> White, Aquamarine, Ocean Blue, Royal Blue, Black</p>	<ul style="list-style-type: none"> <li>• For residential or commercial pools</li> <li>• Excellent chemical and abrasion resistance</li> <li>• For use over existing chlorinated rubber or synthetic rubber-based pool paints</li> <li>• Ideal for bare concrete, marcite, gunite, and other masonry surfaces</li> <li>• For use in fresh, salt water, or chlorinated pools</li> </ul>
<p><b>CR-26XX:</b> Chlorinated Rubber Swimming Pool Paint is a chlorinated rubber coating for new or old in-ground masonry pools. It provides excellent chemical resistance and is durable in fresh or salt water, and also acceptable for use in chlorinated pools. Use Chlorinated Rubber Swimming Pool Paint over existing chlorinated rubber based pool paint or over bare concrete, marcite, gunite, or other masonry surfaces in good condition.</p> <p><b>Available Colors:</b> White, Aquamarine, Ocean Blue, Royal Blue, Red, Black</p>	<ul style="list-style-type: none"> <li>• Chlorinated rubber system</li> <li>• For use on new or old in-ground masonry pools</li> <li>• For use in fresh, salt water, or chlorinated pools</li> </ul>
<p><b>IG-40XX:</b> Epoxy Swimming Pool Paint is a high solids, two-component polyamide epoxy coating that offers excellent chemical and abrasion resistance. It is extremely durable in fresh and salt water and is resistant to common pool chemicals, including chlorine. Use Epoxy Pool Paint over previous epoxy coatings, steel, fiberglass, bareconcrete, marcite, gunite, or other masonry surfaces in sound condition.</p> <p><b>Available Colors:</b> White, Ocean Blue, Royal Blue, Red, Black</p>	<ul style="list-style-type: none"> <li>• Two-component polyamide epoxy pool paint</li> <li>• For use on concrete, marcite, gunite, fiberglass, and steel pools</li> <li>• Can also be used over existing epoxy coatings</li> <li>• Extremely durable</li> <li>• Resistant to common pool chemicals, including chlorine</li> </ul>

\*For additional product information, including preparation and application, refer to <https://www.benjaminmoore.com/en-us/documentation> for TDS.

Please note that not all Benjamin Moore & Co. products are available in all areas due to VOC regulations. Please check with your local retailer before making your selection.

†For the most up-to-date MPI specifications, visit [www.mpi.net](http://www.mpi.net)

# Traffic Coatings



## Insl-X® Traffic Paints

Latex, acrylic fast set, and alkyd traffic and marking paints in a variety of colors.

Code	Product	Recoat Time	Vol. Sol. (± 2%)	Cov. (Sq. Ft.)	VOC Range	Specifications†
TP-22XX	Latex Traffic Paint	4 hours	34.0	4-inch line: 680-960 linear feet	< 100 g/L	MPI 97
TP-32XX	Latex Traffic Paint - Yellow	3-4 hours	39.0	4-inch line: 328-480 linear feet	< 50 g/L	MPI 97
TP-23XX	Acrylic Fast Set Traffic Paint	1 hour	60.0	4-inch line: 320 linear feet	< 50 g/L	MPI 97
TP-33XX	Acrylic Fast Set Traffic Paint - Yellow	1 hour	60.0	4-inch line: 320 linear feet	< 50 g/L	MPI 97
TP-24XX	Alkyd Zone Marking Traffic Paint	4 hours	54.0	4-inch line: 320 linear feet	> 250 g/L	MPI 32
TP-34XX	Alkyd Zone Marking Traffic Paint - Yellow	4 hours	54.0	4-inch line: 320 linear feet	> 250 g/L	MPI 32

Product Description	Features/Benefits
<p><b>TP-22XX, TP-32XX:</b> Latex Traffic Paint is a fast-drying, exterior/interior acrylic latex line marking paint. It can be applied with a brush, roller, or hand or automatic line markers.</p> <p><b>TP-22XX Available Colors:</b> White, Red, Black, Handicap Blue</p> <p><b>TP-32XX Available Colors:</b> Yellow</p>	<ul style="list-style-type: none"> <li>• Acrylic latex traffic paint</li> <li>• Fast dry</li> <li>• Exterior/interior use</li> </ul>
<p><b>TP-23XX, TP-33XX:</b> Acrylic Fast Set Traffic Paint is a fast-drying acrylic paint for marking traffic lanes on streets, highways, parking lots, warehouses, and other areas where such markings are required.</p> <p><b>TP-23XX Available Colors:</b> White</p> <p><b>TP-33XX Available Colors:</b> Yellow</p>	<ul style="list-style-type: none"> <li>• Acrylic fast set traffic paint</li> <li>• Dries in 20 minutes to touch</li> <li>• Ideal for marking traffic lanes</li> </ul>
<p><b>TP-24XX, TP-34XX:</b> Alkyd Zone Marking Traffic Paint is a fast-drying, exterior/interior zone marking paint designed for use on concrete and asphalt surfaces. It resists abrasion, oils, grease, gasoline, and severe weather.</p> <p><b>TP-24XX Available Colors:</b> White</p> <p><b>TP-34XX Available Colors:</b> Yellow</p>	<ul style="list-style-type: none"> <li>• Alkyd zone marking traffic paint</li> <li>• Designed for use on concrete or asphalt</li> <li>• Resists abrasion, oils, grease, gasoline, and severe weather</li> </ul>

\*For additional product information, including preparation and application, refer to <https://www.benjaminmoore.com/en-us/documentation> for TDS.

Please note that not all Benjamin Moore & Co. products are available in all areas due to VOC regulations. Please check with your local retailer before making your selection.

†For the most up-to-date MPI specifications, visit [www.mpi.net](http://www.mpi.net)

# Athletic Coatings



## Insl-X® Latex Field Marking Paints

Concentrated marking paste and ready-to-use paint for grass and turf fields.

Code	Product	Recoat Time	Vol. Sol. (± 2%)	Cov. (Sq. Ft.)	VOC Range	Specifications†
<b>B0-5500</b>	<b>Latex Field Marking Paste</b>	1 hour	30.0	3-inch line: 400 linear feet 4-inch line: 300 linear feet 6-inch line: 200 linear feet	< 50 g/L	-
<b>FM-65XX</b>	<b>Latex Field Marking Paint</b>	4 hours	27.0	3-inch line: 350-450 linear feet 4-inch line: 265-340 linear feet 6-inch line: 175-225 linear feet	< 50 g/L	-

Product Description	Features/Benefits
<p><b>B0-5500:</b> Latex Field Marking Paste is specifically designed for use on natural or artificial turf, concrete, and asphalt as a semi-permanent coating for line marking or artistic graphics. <b>Available Colors:</b> White</p>	<ul style="list-style-type: none"> <li>• This is a concentrate to which water must be added for use</li> <li>• Fast-drying</li> <li>• For use on natural or artificial turf</li> <li>• Can also be used on concrete or asphalt</li> <li>• Semi-permanent coating</li> <li>• Ideal for line marking and graphics</li> </ul>
<p><b>FM-65XX:</b> Latex Field Marking Paint is specifically designed for use on natural or artificial turf, concrete, and asphalt as a semi-permanent coating for line marking or artistic graphics. <b>Available Colors:</b> White, Yellow</p>	<ul style="list-style-type: none"> <li>• Fast-drying</li> <li>• Ideal for line marking and graphics</li> <li>• For use on natural or artificial turf</li> <li>• Can also be used on concrete or asphalt</li> <li>• Semi-permanent coating</li> </ul>

\*For additional product information, including preparation and application, refer to <https://www.benjaminmoore.com/en-us/documentation> for TDS.

Please note that not all Benjamin Moore & Co. products are available in all areas due to VOC regulations. Please check with your local retailer before making your selection.

†For the most up-to-date MPI specifications, visit [www.mpi.net](http://www.mpi.net)

# Athletic Coatings



## Tru-flex® Recreational Coatings

Specially designed to coat and line a variety of tennis and other outdoor sport courts.

Code	Product	Recoat Time	Vol. Sol. (± 2%)	Cov. (Sq. Ft.)	VOC Range	Specifications†
TRC-007	Tru-flex® Concrete Bond Coat	1-2 hours	45.0	120	< 100 g/L	-
TRC-035	Tru-flex® Patch N Level	-	60.0	-	< 50 g/L	-
TRC-038	Tru-flex® Line Marking Paint	3-4 hours	38.0	180-225	< 100 g/L	-
TRC-040	Tru-flex® Neutral Filler Coat	3-4 hours	61.0	Undiluted: 135 Diluted: 90	< 100 g/L	-
TRC-060	Tru-flex® Cushion Coat	3-4 hours	43.0	Undiluted: 75 Diluted: 65	< 100 g/L	-
TRC-08X	Tru-flex® Smooth Colored Finish Coat	3-4 hours	26.0	Undiluted: 150 Diluted: 75	< 250 g/L	-
TRC-028X	Tru-flex® Textured Colored Finish Coat	3-4 hours	31.0	80	< 100 g/L	-

\*For additional product information, including preparation and application, refer to <https://www.benjaminmoore.com/en-us/documentation> for TDS.

Please note that not all Benjamin Moore & Co. products are available in all areas due to VOC regulations. Please check with your local retailer before making your selection.

†For the most up-to-date MPI specifications, visit [www.mpi.net](http://www.mpi.net)

# Athletic Coatings



## Tru-flex® Recreational Coatings Continued

Product Description	Features/Benefits
<p><b>TRC-007:</b> Tru-flex® Concrete Bond Coat is formulated with acrylic polymers that are specially designed for sealing and binding concrete surfaces. It acts as a bonding membrane that allows all Tru-flex® Recreational Coating Systems to adhere tightly to bare masonry and concrete.</p> <p><b>Available Colors:</b> Clear</p>	<ul style="list-style-type: none"> <li>• Acrylic bond coat for tennis courts</li> <li>• Adds years of life to the court surface</li> <li>• Product is formulated for onsite dilution prior to use</li> </ul>
<p><b>TRC-035:</b> Tru-flex® Patch N Level is a ready-to-use, non-shrinking, non-cracking patching compound for depressions in tennis courts. It is recommended for smoothing and leveling small areas 1-2 ft. in diameter.</p> <p><b>Available Colors:</b> Neutral</p>	<ul style="list-style-type: none"> <li>• Flexible film is not affected by heat or cold</li> <li>• Non-shrinking patching compound for smoothing small areas</li> </ul>
<p><b>TRC-038:</b> Tru-flex® Line Marking Paint is high-hiding and used to mark lines on tennis courts and other recreational surfaces. It is designed to give long-lasting lines on all types of asphalt and acrylic surfaces.</p> <p><b>Available Colors:</b> White</p>	<ul style="list-style-type: none"> <li>• Used to mark lines on tennis courts and other recreational surfaces</li> <li>• High-hiding for clean, clear cut lines</li> <li>• Flexible film is not affected by heat or cold</li> <li>• Film possesses breathing ability enabling normal moisture to pass through as vapor</li> </ul>
<p><b>TRC-040:</b> Tru-flex® Neutral Filler Coat consists of 100% acrylic emulsions, special reinforcing pigments, and special size pure silica sand that provides a uniform and controlled texture. It protects asphalt courts from the ultra-violet rays of the sun.</p> <p><b>Available Colors:</b> Neutral</p>	<ul style="list-style-type: none"> <li>• Dries rapidly and allows moisture vapor to pass through the dried film</li> <li>• Provides a uniform and controlled texture</li> <li>• Use over painted or unpainted asphalt and concrete tennis court surfaces and other play areas</li> </ul>
<p><b>TRC-060:</b> Tru-flex® Cushion Coat is a high-performance coating consisting of encapsulated rubber particles and fillers, carefully blended with 100% acrylic emulsion to create a shock-absorbing type of color surface when used as part of the Tru-flex® system. It has a uniform texture and adds resilience to asphalt and concrete court surfaces.</p> <p><b>Available Colors:</b> Neutral</p>	<ul style="list-style-type: none"> <li>• Dries rapidly and allows moisture vapor to pass through the dried film</li> <li>• Provides a uniform and controlled texture</li> <li>• Use over painted or unpainted asphalt and concrete tennis court surfaces and other play areas</li> </ul>
<p><b>TRC-08X:</b> Tru-flex® Smooth Colored Finish Coat is a high-performance 100% acrylic emulsion coating, highly pigmented with prime color and reinforcing pigments that will provide a long-lasting finish for tennis and athletic courts. It protects asphalt from UV rays to provide excellent durability.</p> <p><b>Available Colors:</b> Green, Red, Blue, Dark Green</p>	<ul style="list-style-type: none"> <li>• High-performance acrylic emulsion coating</li> <li>• For use on tennis and other athletic courts</li> <li>• Long-lasting color retention</li> </ul>
<p><b>TRC-28X:</b> Tru-flex® Textured Colored Finish Coat is a 100% acrylic emulsion coating, highly pigmented with prime color that will provide a long-lasting textured finish for tennis and sports courts. It can be applied over painted or unpainted asphalt, concrete tennis court surfaces or other play areas, and over Tru-flex® Filler Coat or Tru-flex® Cushion Coat products.</p> <p><b>Available Colors:</b> Green, Red, Blue, Dark Green</p>	<ul style="list-style-type: none"> <li>• Flexible, fade-resistant, and dries quickly to a tough, durable color surface</li> <li>• Provides a long-lasting textured finish for tennis and sports courts</li> <li>• Use over painted or unpainted asphalt and concrete tennis court surfaces and other play areas</li> </ul>

\*For additional product information, including preparation and application, refer to <https://www.benjaminmoore.com/en-us/documentation> for TDS.

Please note that not all Benjamin Moore & Co. products are available in all areas due to VOC regulations. Please check with your local retailer before making your selection.

†For the most up-to-date MPI specifications, visit [www.mpi.net](http://www.mpi.net)

# Specialty Coatings



## Cabinet Coat

Makes cabinets, shelves, doors, trim or furniture look new again with an ultra-smooth, long-lasting finish.

Code	Product	Recoat Time	Vol. Sol. (± 2%)	Cov. (Sq. Ft.)	VOC Range	Specifications†
CC-65XX	Cabinet Coat - Satin	6 hours	38.0	350-450	< 50 g/L	MPI 140
CC-66XX	Cabinet Coat - Semi-Gloss	6 hours	37.0	350-450	< 50 g/L	-

Product Description	Features/Benefits
<p><b>CC-65XX, CC-66XX:</b> Cabinet Coat refreshes kitchen and bathroom cabinets, shelving, furniture, trim and crown molding, and other interior applications that require an ultra-smooth, factory-like finish with long-lasting beauty.</p> <p><b>Available Colors:</b> White. Tint bases available for all colors.</p>	<ul style="list-style-type: none"> <li>• Ultra-smooth finish</li> <li>• Urethane-acrylic formula</li> <li>• Refurbishes worn cabinets</li> <li>• Adheres to hard-to-coat surfaces without a primer</li> </ul>



## Insl-X® Color-Changing Ceiling Paint

Goes on pink and dries white to help prevent missed spots, and provides a uniform, flat finish.

Code	Product	Recoat Time	Vol. Sol. (± 2%)	Cov. (Sq. Ft.)	VOC Range	Specifications†
PC-1200	Color-Changing Ceiling Paint	2 hours	28.0	300-400	< 50 g/L	-

Product Description	Features/Benefits
<p><b>PC-1200:</b> Color-Changing Ceiling Paint is applied as a light pink color to indicate painted areas for preventing missed spots. It dries to a uniform, white finish in a flat sheen that helps minimize the appearance of surface imperfections.</p> <p><b>Available Colors:</b> White</p>	<ul style="list-style-type: none"> <li>• Disappearing pink color-change technology</li> <li>• Uniform, flat finish</li> <li>• Self-priming</li> <li>• For smooth or textured coatings</li> <li>• Spatter-resistant</li> <li>• Low VOC</li> </ul>

\*For additional product information, including preparation and application, refer to <https://www.benjaminmoore.com/en-us/documentation> for TDS.

Please note that not all Benjamin Moore & Co. products are available in all areas due to VOC regulations. Please check with your local retailer before making your selection.

†For the most up-to-date MPI specifications, visit [www.mpi.net](http://www.mpi.net)



# Specialty Coatings



## Insl-X® Fire Retardant Paint

Retards flame spread, minimizes smoke development, and applies like a conventional latex flat paint.

Code	Product	Recoat Time	Vol. Sol. (± 2%)	Cov. (Sq. Ft.)	VOC Range	Specifications†
FR-210	Fire Retardant Paint	2 hours	48.0	150	< 50 g/L	MPI 64

Product Description	Features/Benefits
<p><b>FR-210:</b> Fire Retardant Paint expands and forms a thick cellular char blanket, called intumescence, when attacked by flame. This latex paint retards flame spread, minimizes smoke development, and applies like a conventional latex flat paint.</p> <p><b>Available Colors:</b> White</p>	<ul style="list-style-type: none"> <li>Per ASTM E84 / UL 723 and ASTM E2768 it is proven to slow the spread of fire and smoke as compared to conventional paint coatings</li> <li>Chemical reaction forms intumescence</li> <li>For commercial and residential use</li> <li>Low VOC</li> <li>Dries to a decorative flat finish</li> </ul>



## Insl-X® Lead Block®

A water-based elastomeric acrylic coating with excellent adhesion, elongation, and tensile strength characteristics.

Code	Product	Recoat Time	Vol. Sol. (± 2%)	Cov. (Sq. Ft.)	VOC Range	Specifications†
EC-3210	Lead Block®	4-12 hours	44.0	80-100	< 100 g/L	-

Product Description	Features/Benefits
<p><b>EC-3210:</b> Lead Block® is a water-based elastomeric acrylic coating with excellent adhesion, elongation, and tensile strength characteristics. When applied to surfaces bearing lead-containing paint, this product will seal in the lead paint with a thick, elastic membrane sheathing.</p> <p><b>Available Colors:</b> White</p>	<ul style="list-style-type: none"> <li>Cost-effective alternative to lead paint remediation</li> <li>Creates a barrier over lead paints</li> <li>For interior or exterior use</li> <li>Spray application preferred</li> <li>Can be used as a primer or top coat</li> </ul>

\*For additional product information, including preparation and application, refer to <https://www.benjaminmoore.com/en-us/documentation> for TDS.

Please note that not all Benjamin Moore & Co. products are available in all areas due to VOC regulations. Please check with your local retailer before making your selection.

†For the most up-to-date MPI specifications, visit [www.mpi.net](http://www.mpi.net)



# Specialty Coatings

## Insl-X® Decorative and Specialty Spray Paints

Provides a beautiful, smooth, durable finish with easy spray-at-any-angle application that provides even coverage and dries quickly for a wide variety of paint projects.

Code	Product	Recoat Time	Wt. Sol. (± 1%)	Cov. (Sq. Ft.)	VOC Range	Specifications†
AC-01XX	Decorative Aerosol - Gloss	1 hour	14.6	5-6	Max. 65%	-
AC-02XX	Decorative Aerosol - Satin	1 hour	16.0	6-8	Max. 65%	-
AC-03XX	Decorative Aerosol - Flat	1 hour	19.8	6-8	Max. 60%	-
AC-04XX	Decorative Aerosol - Primer	1 hour	22.0	7-9	Max. 60%	-
AC-05XX	Decorative Aerosol - Fluorescent	1 hour	30.1	5-7	Max. 75%	-
AC-06XX	Decorative Aerosol - Lacquer	1 hour	8.1	8-9	Max. 67%	-
AC-07XX	Decorative Aerosol - High Heat	2 hours	21.7	7-8	Max. 80%	-
AC-08XX	Decorative Aerosol - Metallic	1 hour	13.9	11-13	Max. 80%	-
AC-09XX	Decorative Aerosol - Epoxy	24 hours	17.4	6-8	Max. 65%	-

\*For additional product information, including preparation and application, refer to <https://www.benjaminmoore.com/en-us/documentation> for TDS.

Please note that not all Benjamin Moore & Co. products are available in all areas due to VOC regulations. Please check with your local retailer before making your selection.

†For the most up-to-date MPI specifications, visit [www.mpi.net](http://www.mpi.net)

# Specialty Coatings



## Insl-X® Decorative and Specialty Spray Paints Continued

Provides a beautiful, smooth, durable finish with easy spray-at-any-angle application that provides even coverage and dries quickly for a wide variety of paint projects.

Product Description	Features/Benefits
<p><b>AC-01XX, AC-02XX, AC-03XX:</b> Decorative Spray Paints are formulated to dry quickly and provide a durable, long-lasting finish.</p> <p><b>AC-01XX Available Colors:</b> White, Black, Clear Acrylic, Navajo White, Ivory, Heirloom White, Almond, Awareness Pink, Banner Orange, Americana, Royal Blue, Coastal Calm, Sunflower Yellow, Daffodil, Hunter Green, Autumn Fern, Leather Brown, Slate Gray, Pewter Gray, Shutter Red, Fiesta Red, Hot Red, Calypso, Pumpkin Orange, Apple Green, Plum Purple</p> <p><b>AC-02XX Available Colors:</b> White, Black, Clear Acrylic, Almond, Wild Rapids, Gale Winds, Burgundy, Gibraltar, Khaki</p> <p><b>AC-03XX Available Colors:</b> White, Black</p>	<ul style="list-style-type: none"> <li>• Interior/Exterior</li> <li>• Fast-drying</li> <li>• Long-lasting finish</li> </ul>
<p><b>AC-04XX:</b> Decorative Primer Spray Paints are formulated to dry quickly and prepare the surface for better top coat adhesion.</p> <p><b>Available Colors:</b> White, Gray</p>	<ul style="list-style-type: none"> <li>• Interior/Exterior</li> <li>• Fast-drying</li> <li>• Seals the surface for a uniform finish</li> </ul>
<p><b>AC-05XX:</b> Decorative Fluorescent Spray Paints are formulated to dry quickly and provide a durable, long-lasting finish.</p> <p><b>Available Colors:</b> Blazing Orange, Hot Red, Bright Yellow, Glo Green, Neon Blue, Red Orange, Electric Pink</p>	<ul style="list-style-type: none"> <li>• Interior/Exterior</li> <li>• Fast-drying</li> <li>• Long-lasting finish</li> </ul>
<p><b>AC-06XX:</b> Decorative Lacquer Spray Paints are formulated to dry quickly and provide a durable, long-lasting, high-gloss finish.</p> <p><b>Available Colors:</b> White, Black, Clear</p>	<ul style="list-style-type: none"> <li>• Interior/Exterior</li> <li>• Fast-drying</li> <li>• Long-lasting finish</li> </ul>
<p><b>AC-07XX:</b> Decorative High Heat Spray Paints are formulated to provide heat resistance up to 1000°F while also providing excellent adhesion and minimal color change.</p> <p><b>Available Colors:</b> White, Black, Aluminum</p>	<ul style="list-style-type: none"> <li>• Interior/Exterior</li> <li>• Fast-drying</li> <li>• Long-lasting finish</li> </ul>
<p><b>AC-08XX:</b> Decorative Metallic Spray Paints provide a high-gloss metallic sheen and are formulated to dry quickly while providing a durable, long-lasting finish.</p> <p><b>Available Colors:</b> Silver, Gold, Copper, Chrome</p>	<ul style="list-style-type: none"> <li>• Interior/Exterior</li> <li>• Fast-drying</li> <li>• Long-lasting finish</li> </ul>
<p><b>AC-09XX:</b> Decorative Epoxy Spray Paints are high-gloss and formulated to resist chipping, cracking, and peeling.</p> <p><b>Available Colors:</b> White, Black, Almond</p>	<ul style="list-style-type: none"> <li>• Interior/Exterior</li> <li>• Fast-drying</li> <li>• Resists chipping</li> </ul>

\*For additional product information, including preparation and application, refer to <https://www.benjaminmoore.com/en-us/documentation> for TDS.

Please note that not all Benjamin Moore & Co. products are available in all areas due to VOC regulations. Please check with your local retailer before making your selection.

†For the most up-to-date MPI specifications, visit [www.mpi.net](http://www.mpi.net)

# Specialty Coatings



## Insl-X® Rust Preventative Spray Paints

Makes metal look like new and helps protect against rust.

Code	Product	Recoat Time	Wt. Sol. (± 1%)	Cov. (Sq. Ft.)	VOC Range	Specifications†
AC-10XX	Rust Preventative Aerosol - Primer	1 hour	22.1	7-9	Max. 60%	-
AC-11XX	Rust Preventative Aerosol - Gloss	1 hour	23.5	6-8	Max. 65%	-
AC-12XX	Rust Preventative Aerosol - Satin	1 hour	16.8	7-9	Max. 65%	-
AC-13XX	Rust Preventative Aerosol - Flat	1 hour	16.8	7-9	Max. 60%	-
AC-14XX	Rust Preventative Aerosol - Safety Colors	1 hour	23.5	Varies	Max. 65%	-

Product Description	Features/Benefits
<p><b>AC-10XX:</b> Rust Preventative Primer Spray Paints are formulated to protect against rust and prepare the surface for better adhesion of the top coat. <b>Available Colors:</b> White, Gray, Red Metal</p>	<ul style="list-style-type: none"> <li>Interior/Exterior</li> <li>Direct-to-metal</li> <li>Protects against rust</li> <li>Prepares the surface for a uniform finish</li> </ul>
<p><b>AC-11XX, AC-12XX, AC-13XX, AC-14XX:</b> Rust Preventative Spray Paints are formulated to protect against rust and resist weathering and fading. <b>AC-11XX Available Colors:</b> White, Black, Medium Green, Blue, Aluminum, Hunter Green, Machinery Gray, Seal Brown, Almond, Light Blue, Pebble, Bronze, Fiesta Red, Shutter Burgundy, Hot Red, Reed, Charleston Green <b>AC-12XX Available Colors:</b> White, Black, Destination Bronze <b>AC-13XX Available Colors:</b> White, Black <b>AC-14XX Available Colors:</b> Safety Yellow, Safety Red, Safety Orange, Safety Purple, Safety Blue, Safety Green</p>	<ul style="list-style-type: none"> <li>Interior/Exterior</li> <li>Direct-to-metal</li> <li>Excellent adhesion</li> <li>Protects against rust</li> <li>Durable finish</li> </ul>

\*For additional product information, including preparation and application, refer to <https://www.benjaminmoore.com/en-us/documentation> for TDS.

Please note that not all Benjamin Moore & Co. products are available in all areas due to VOC regulations. Please check with your local retailer before making your selection.

†For the most up-to-date MPI specifications, visit [www.mpi.net](http://www.mpi.net)

# Specialty Coatings



## Insl-X® Freezer Kote

A high-gloss, rust-inhibiting coating designed for interior cold storage applications in sub-freezing temperatures. This product is for industrial use only and is not recommended for residential use.

Code	Product	Recoat Time	Vol. Sol. (± 2%)	Cov. (Sq. Ft.)	VOC Range	Specifications†
FK-13XX	Freezer Kote	24 hours	60.0	450-500	< 350 g/L	-

Product Description	Features/Benefits
<p><b>FK-13XX:</b> Freezer Kote is a high-gloss, rust-inhibiting coating designed for application in sub-freezing temperatures. It is an alcohol-based formula that dries quickly.</p> <p><b>Available Colors:</b> White, Safety Yellow</p>	<ul style="list-style-type: none"> <li>• Designed for application in extremely low temperatures (-40°F)</li> <li>• Helps to eliminate cold storage shut down while painting</li> <li>• Alcohol-based formula, dries quickly</li> <li>• High-gloss finish</li> </ul>



## Insl-X® Chalkboard Paint

Turns most interior paintable surfaces into a black chalkboard.

Code	Product	Recoat Time	Vol. Sol. (± 2%)	Cov. (Sq. Ft.)	VOC Range	Specifications†
CHK-3078	Chalkboard Paint	4 hours	40.0	100-110	< 50 g/L	-

Product Description	Features/Benefits
<p><b>CHK-3078:</b> Chalkboard Paint is 100% acrylic and turns most interior paintable surfaces into a black chalkboard. Create a communication space in the kitchen for the family, turn a wall in your home office into a notepad or give your kids a place in their bedroom to get creative.</p> <p><b>Available Colors:</b> Black</p>	<ul style="list-style-type: none"> <li>• Easy application</li> <li>• Easy-to-clean</li> <li>• For interior surfaces</li> <li>• Black eggshell finish</li> </ul>

\*For additional product information, including preparation and application, refer to <https://www.benjaminmoore.com/en-us/documentation> for TDS.

Please note that not all Benjamin Moore & Co. products are available in all areas due to VOC regulations. Please check with your local retailer before making your selection.

†For the most up-to-date MPI specifications, visit [www.mpi.net](http://www.mpi.net)



# Cleaning & Prep Products

## Insl-X® Cleaning & Prep Products

Concentrated solutions for cleaning and preparing a variety of surfaces for proper top coating with Insl-X® problem-solving products.

Code	Product	Recoat Time	Vol. Sol. (± 2%)	Cov. (Sq. Ft.)	VOC Range	Specifications†
CL-0100	Heavy Duty Degreaser	-	-	400	< 250 g/L	-
CL-0200	All-Purpose Citrus Cleaner	-	-	-	> 250 g/L	-
CL-0300	Concrete Etch	-	-	100	> 250 g/L	-

Product Description	Features/Benefits
<p><b>CL-0100:</b> Heavy Duty Degreaser is a concentrated cleaner that is designed to permeate into voids, cracks, and crevices, converting any oil, grease, and animal by-products into a soapy solution which floats up and out of a surface during the rinsing process.</p> <p><b>Available Colors:</b> N/A</p>	<ul style="list-style-type: none"> <li>• Concentrated and must be mixed with water</li> <li>• Use on metal, fiberglass, vinyl, and masonry surfaces</li> <li>• Rinses clean with no residue</li> </ul>
<p><b>CL-0200:</b> All-Purpose Citrus Cleaner is a powerful, phosphate-free, emulsifying cleaner based on a citrus by-product. It works on grease, oil, dirt, tar, tree sap, crayon, adhesives, common stains and more.</p> <p><b>Available Colors:</b> N/A</p>	<ul style="list-style-type: none"> <li>• Concentrated for maximum strength</li> <li>• Excellent cleaner for a wide variety of surfaces</li> <li>• Milder and less corrosive to cleaned surfaces</li> </ul>
<p><b>CL-0300:</b> Concrete Etch is used for removing laitance and for etching bare concrete. This pretreatment includes surfactants that provide better penetration for removing foreign materials and contaminants. It also contains extenders which give a more even etch over larger areas.</p> <p><b>Available Colors:</b> N/A</p>	<ul style="list-style-type: none"> <li>• Concentrated for maximum strength</li> <li>• Inhibitors help protect metal surfaces from corrosion</li> <li>• May be used to remove rust and scale from steel</li> </ul>

\*For additional product information, including preparation and application, refer to <https://www.benjaminmoore.com/en-us/documentation> for TDS.

Made in USA

# Professional Paint Brushes



## Not All Paint Brushes Are Created Equal

All Benjamin Moore brushes feature premium hardwood handles, resulting in a light, durable and maneuverable handle that absorbs moisture to help keep hands dry. With synthetic filaments sourced from the finest natural resources.

Benjamin Moore is dedicated to the highest standard of quality. All brushes are chiseled edge for ease of use, durable construction suitable for everyday use. Excellent cleanup attributes. Stainless steel ferrule.



Product Description	Available In	
<b>Tynex®/Orel® (Nylon/Polyester)</b> <ul style="list-style-type: none"><li>· Firm blend</li><li>· Formulated for use with all interior or exterior latex and oil-based paints, stains, primers, and polyurethanes</li><li>· Engineered for use with today's coatings</li><li>· Our most versatile paint brush</li></ul>	Angle Sash	2", 2.5", 3"
	Thin Angle Sash	1.5", 2", 2.5"
	Flat Sash	2", 2.5", 3"



<b>Chinex®</b> <ul style="list-style-type: none"><li>· Extra firm blend</li><li>· Formulated for use with all interior or exterior latex and oil-based paints, stains, and primers</li><li>· Best for applying Low VOC and high viscosity paints</li></ul>	Angle Sash	1.5", 2", 2.5", 3"
	Beavertail	2", 2.5", 3"



<b>Tynex® Nylon</b> <ul style="list-style-type: none"><li>· Soft blend 100% Tynex® Nylon filaments</li><li>· Engineered for maximum flexibility for fine finishing works with all paints, stains, urethanes/polyurethanes and extremely well with waterborne alkyds</li></ul>	Angle Sash	2", 2.5"
	Thin Angle Sash	2", 2.5"
	Flat Sash	2", 2.5", 3"



<b>Chinex®/Polyester</b> <ul style="list-style-type: none"><li>· Firm blend with Chinex® and Polyester blended filaments</li><li>· Engineered to be long lasting and to give an exceptional finish.</li><li>· Made for use with all interior or exterior latex and oil-based paints, stains, and primers</li></ul>	Angle Sash	2", 2.5", 3"
	Flat Sash	2", 2.5", 3"
	Beavertail	1.5", 2", 2.5", 3"



**Product Description**

**Nylon/Polyester (Firm)**

- Handcrafted in USA with global components
- Firm blend Nylon Polyester blended filaments
- Designed for all interior or exterior latex and oil-based paints, stains, primers, and polyurethanes

**Available In**

Angle Sash	1.5", 2", 2.5", 3"
Thin Angle Sash	1", 1.5", 2", 2.5", 3"
Flat Sash	1.5", 2", 2.5", 3"
Beavertail	1.5", 2", 2.5", 3"
Wall	3", 4"
Short Angle Sash	2"
Display Box (AS)	2.5"



**Nylon/Polyester (Extra Firm)**

- Handcrafted in USA with global components
- Extra Firm blend Nylon Polyester blended filaments
- Designed for interior or exterior latex and oil-based paints, stains, and primer
- Suitable for use on rough surfaces

Angle Sash	2", 2.5", 3"
------------	--------------

Flat Sash	2", 2.5", 3"
-----------	--------------



**CT Poly™**

- Handcrafted in USA with global components
- Soft blend CT Poly™ filaments
- Formulated for use with all interior or exterior latex and oil-based paints, stains, primers, and polyurethanes

Angle Sash	1.5", 2", 2.5", 3"
------------	--------------------

Thin Angle Sash	1.5", 2", 2.5"
-----------------	----------------

Flat Sash	1.5", 2", 2.5", 3"
-----------	--------------------

Beavertail	1.5", 2", 2.5", 3"
------------	--------------------

Wall	3", 4"
------	--------

Short Angle Sash	2"
------------------	----

Display Box (AS)	2.5"
------------------	------



**Block Stainer**

- Blend of white China bristle and polyester, square construction
- Polished square hardwood base with screw-in wood handle
- Designed for all latex or oil-based stains, preservatives, and waterproofing
- Threaded handle for use with extension pole
- Ideal for wood, brick, and stucco

Block	4"
-------	----



# Painting Kits



Product Description	Available In
<b>Pro Interior Painting Kit</b> <ul style="list-style-type: none"> <li>· 3-Piece professional painting kit for Smooth to semi-smooth surfaces</li> <li>· 9" x 3/8" Woven roller cover</li> <li>· 9" Heavy duty roller frame</li> <li>· 9" 2 quart deep plastic tray</li> </ul>	9"

Made in USA

# Professional Roller Covers

## Not All Roller Covers Are Created Equal

Benjamin Moore® roller covers feature durable polypropylene cores that are resistant to all paints, stains and solvents, extending their life. Ultra-durable roller cover cores eliminate bending, allowing even contact with the wall.



Product Description	Available In
<b>Aura®</b> <ul style="list-style-type: none"> <li>· Lint-free finish on smooth, semi-smooth, and semi-rough surfaces</li> <li>· Designed for all paints and enamels</li> <li>· Woven fabric designed for maximum paint pick-up and release</li> <li>· Crafted for Best Results with AURA® Paints</li> </ul>	3/8" nap      9", 18" <hr/> 1/2" nap      9"



<b>Microfiber-Pro™</b> <ul style="list-style-type: none"> <li>· Manufactured in USA with global components</li> <li>· Innovative microfiber and polyester blend designed for maximum paint pick-up and smooth consistent release</li> <li>· Ideal for paints, stains, and urethanes, Shed-resistant, Superior finish</li> </ul>	3/8" nap      9", 9" (3PK) <hr/> 1/2" nap      9"
---	--



Product Description	Available In	
<b>Microfiber</b> <ul style="list-style-type: none"> <li>· Manufactured in USA with global components</li> <li>· Finest microfiber blend designed for high-capacity and smooth consistent paint release</li> <li>· Designed for all paints, stains, and urethanes</li> </ul>	5/16" nap	9"
	3/8" nap	9", 9" (3PK)
	1/2" nap	9"
	3/4" nap	9"



<b>Woven</b> <ul style="list-style-type: none"> <li>· Manufactured in USA</li> <li>· Lint-free finish on smooth, semi-smooth, and semi-rough surfaces</li> <li>· Designed for all paints and enamels</li> <li>· Woven fabric designed for maximum paint pick-up and release</li> </ul>	1/4" nap	9"
	3/8" nap	4", 9", 9" (3PK), 18"
	1/2" nap	9", 9" (3PK)
	3/4" nap	9"



<b>High Capacity</b> <ul style="list-style-type: none"> <li>· Manufactured in USA</li> <li>· Maximum paint pickup and release</li> <li>· Designed for low sheen paints, stains, and primers</li> <li>· Knit fabric resists matting</li> </ul>	3/8" nap	4", 9", 18"
	1/2" nap	4", 9", 18"
	3/4" nap	9" 18"
	1-1/4" nap	9"



<b>Polyamide</b> <ul style="list-style-type: none"> <li>· Manufactured in USA with global components</li> <li>· Exclusive European polyamide fabric designed for high capacity and low paint spatter</li> <li>· Designed for all Paints and Stains</li> <li>· Ideal for drywall, stucco, brick, and rough textures</li> </ul>	1/2" nap	9"
	3/4" nap	9"

# Mini-Rollers



Product Description	Available In	
<b>Microfiber</b> <ul style="list-style-type: none"> <li>Smooth, lint-free finish for maximum coverage</li> <li>Designed for all paints and enamels</li> </ul>	3/8" nap	4" (2PK), (10PK)
	1/2" nap	4" (2PK)
<b>Woven</b> <ul style="list-style-type: none"> <li>Shed-resistant for a lint free application and minimal splatter</li> <li>Ideal for all paints and stains</li> </ul>	1/4" nap	4" (2PK)
	3/8" nap	4", 6 1/2" (2PK), 4" (10PK)
	1/2" nap	4", 6 1/2" (2PK)
<b>High Capacity</b> <ul style="list-style-type: none"> <li>Knit fabric resists matting</li> <li>Designed for low sheen paints, stains, and coatings</li> </ul>	3/8" nap	4", 6 1/2" (2PK)
	1/2" nap	4", 6 1/2" (2PK)
<b>High Density Foam</b> <ul style="list-style-type: none"> <li>Premium quality</li> <li>Provides a smooth finish with all paints, urethanes, varnishes, enamels, and stains</li> </ul>	4" (2PK), (10PK)	
<b>Mohair</b> <ul style="list-style-type: none"> <li>Shed-Resistant fabric for smooth and medium surfaces</li> <li>Designed for all interior / Exterior Enamels, varnishes, urethanes and epoxies</li> </ul>	1/4"	4" (2PK)

# Frames



Product Description	Available In
<b>Pro Roller Frame</b> <ul style="list-style-type: none"><li>· Unique design prevents rollers from slipping off the cage</li><li>· Easy to remove roller design, Durable blue end caps and nylon cage</li><li>· Threaded handle for use with extension poles</li></ul>	9"
<hr/>	
<b>Soft Grip Mini Roller Frames</b> <ul style="list-style-type: none"><li>· Soft grip ergonomic handle</li></ul>	4", 6½"





**Benjamin Moore®**