

RECESS

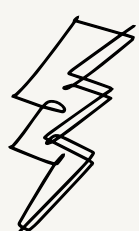


Build a beautiful hybrid office
that doesn't cost the earth.

Table of Contents

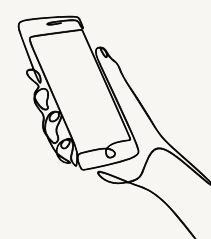
Why Recess	01	BOOTHS	
Who We Worked With	03	The Nook	31
Sustainability	04	The Cove	32
CHAIRS		CAFE & LOUNGE	
Everyday Chair	07	Single Sofa	34
Ergo Chair	09	Double Sofa	35
Ergo Pro Chair	11	Low Cafe Table	36
		Cafe Chair	37
DESKS		Guest Table	38
Single Sit-Stand Desk	14	Guest Chair	39
Single Desk	16	High Cafe Table	40
Corner Desk	18	Cafe Stool	41
FOR TEAMS		Appendix	42
Single Cabinet	20	Contact	45
Credenza	21		
Cable Tray	22		
Monitor Arm	23		
Meeting Room Chair	24		
Dual Sit-Stand Desk	25		
Quad Desk	26		
Six Seat Desk	27		
Meeting Table	28		
Desk Screens	29		

At Recess, our aim is to simplify the process of creating inspiring spaces that empower teams of any size to work their best.



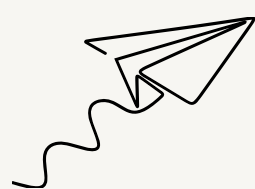
Lightning Fast Lead Times

Get unlimited space plans turned around in 48 hours, and a fully furnished office in as little as 28 days*.



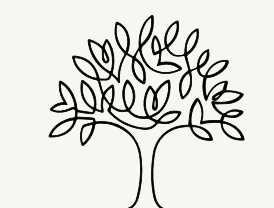
A Complete Range

Whether you need standing desks, benching options, conference setups, or comfortable lounge solutions, we've got your entire office space covered.



Industry Leading Quality

Our high-quality products are built to last for years to come, allowing us to give industry leading warranties on all our products.



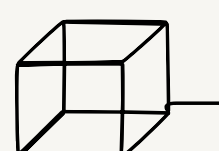
Sustainability a Priority

Designs that outlast hype trends and materials that don't cost the earth. We are building circularity into our business by offering trade in services for previous furniture purchased through us.



A Simplified Process

Build your business, not furniture. We handle everything: COIs, freight, delivery, assembly and cleanup.



Transparent Pricing, save 50%

We sell direct, void of middlemen and markups, to save you 50%+ on quality furniture. Why don't hide our prices or have hidden fees.

*For businesses up to 500m2. For 500m2 +, lead time is 6 weeks.

The Old Way

BROWSE MANUFACTURERS

Hundreds of confusing options



BUY THROUGH FURNITURE DEALER

50% Mark Up
6 - 12 Weeks lead time



MANAGE DELIVERY

Hidden Fees
High delivery and assembly fee



COORDINATE INSTALLATION

Manage multiple vendors
Handle building requirements



AS YOU GROW

No flexibility as your needs change



The Recess Way

MEET RECESS

Curated line of essentials
Buy direct & save 50%



GET STARTED

Space planning included
Delivered in days not weeks
Same day installation



FREE DELIVERY AND ASSEMBLY

Build your business, not
your furniture



RELAX

Lifetime warranty
30 day free returns

At Recess, we believe that delivering on our promise is key to success.

With us, you can expect a personalised approach that focuses on understanding your unique business needs.

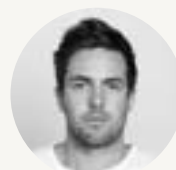
From the initial consultation to final delivery, our dedicated team will be by your side, providing expert guidance throughout the entire process.

We take pride in the quality of our products and always deliver on time and on budget.

TRUSTED BY



“The Recess team was professional, yet personable and really took the time to understand our vision. Everything was completed on time, all of our staff absolutely love working from their stand up desks and we were blown away by the production quality of the soundproof booths given the appealing price point.”



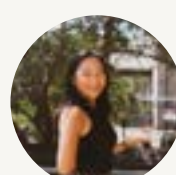
Charlie Gearside
Founder of Eucalyptus

“The Nook is perfect for large shared work environments where phone-call privacy is limited. It’s a well designed, modern take on the traditional phone box.”



Dr. Brandon Gien
CEO of Good Design Australia

“Nook has pride of place in the AfterWork office. They allow us to take calls and Zoom meetings without disturbing the rest of the team, or work in a distraction-free zone.”

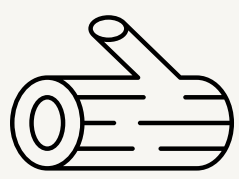


Jesse Wu
Principal / Head of Community

Sustainability

Let's get transparent!

Our vision was simple: create beautiful, functional, and sustainable workspaces that cater to every kind of office need. Furniture that will outlast design trends and materials that don't cost the earth. All whilst crafting the comfort and functionality to boost your workers everyday performance.



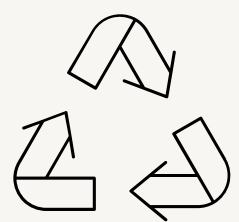
FSC Certified Timber

Recess workspaces are built with 'wood for good', harvested from a certified and sustainably managed forest. That means your new desk is helping your productivity whilst preserving natural forests and the animals that occupy them.



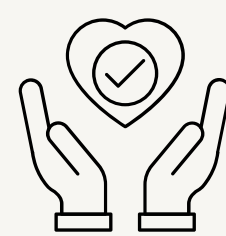
Old Furniture Trade In

Want to upgrade your old furniture but don't have the heart to throw it out? No problems - we'll take it off your hands. From there, it gets upcycled and rehomed. Saving outdated furniture from landfills one piece at a time.



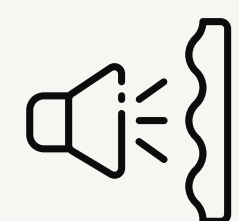
Recycled Materials

We make every effort to use recycled materials on our products where possible - and our cardboard packaging, yep it's recycled too. So, every time you go to work you're already starting out with a win.



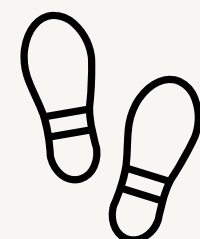
Product Longevity

Together we can stop the waste cycle of office furniture. Our pieces are built to withstand years and years of daily use. And all this is backed up by our lifetime warranty on selected pieces. Comfortable for the bum, back and mind.



Sustainable Soundproofing

Every Nook booth saves 1000+ plastic bottles from becoming landfill and ocean trash. Basically, we promoted plastic from polluting to sound-muting.



Traceable Sources

All of our suppliers are vetted through a rigorous checklist, ensuring we're partnered with only the best and most reliable



Let's get to work

From desks to chairs to soundproof booths we have everything you need to build a beautiful and inspiring work space.

New age companies need flexibility for their work environment more than ever...whether that be at home or in the office.

Recess was designed for the modern workplace, taking the hard work out of furnishing your home office or business? That's our promise.



Chairs

Want an office chair you can sit on all day? Then take a seat - and we mean that quite literally. Our range is affordable, stylish and ready to get to work.

Everyday Chair

More supportive than a great boss, more comfortable than a pair of old jeans. This is our Everyday chair. Made from the highest quality materials and easy to adjust, it's the perfect choice for those wanting to work in comfort and style.

Crafted for comfort

You'll want to sit down for these features. There's an extra-wide seat, S-shaped back that moulds to your body, armrests and it's easily adjustable. Basically, it's a damn comfy chair.

Quality meets sustainability

You'll only find high performance material here. You know, stuff you'll feel amazing sitting on all day. Even better, it's made with 70% recycled materials and is 96% recyclable when you're done with it. But that won't be for years and years.

Stand out while you sit down

If a chair hurts your eyes, does it matter how comfortable it is? Luckily, the Everyday Chair looks great and feels even better. Plus, with a clever and comfortable design it can fit just about anywhere - from the home office to the corner office.



EVERYDAY CHAIR



Features

- Contoured & recycled nylon mesh back with lumbar rest for breathable support
- Rated for 4-6+ hours of comfortable work
- Waterfall seat with medium-firm cushion, using recycled sponge
- Supports up to 102 kg
- Tilt and tilt tension for natural movement
- Intuitive armrest & seat height adjustment
- Four ergonomic adjustments

Specs

Dimensions

64W x 58D x 91-100H (cm)

Weight

13 kg




Package Details

Box Count: 1

Dimensions: 62W x 64D x 37H (cm)

Gross Weight: 14 kg

Colours

-  Slate
-  Night
-  Eucalypt

Ergo Chair

Ergonomics never looked so good. This is the chair for all nighters, long meetings or just your typical work day. Featuring breathable mesh, high levels of support and lots of adjustability, you'll never want to get out of it.

Comfort on another level

The Ergo is BIFMA certified. That means it passes all the tests when it comes to comfort, quality and sustainability. With double-woven mesh, an aluminum base and seven points of adjustment, you're in for a great seating experience.

Flexing to you

However you like to sit, the Ergo can make it happen. From the rotatable lumbar support to the expanded seat depth there's a setting for every body shape. In the mood for a power nap? The 132-degree tilt means you can recline in seconds for a quick break.

Built to last. Built to breathe.

The double-woven mesh allows heat and moisture to be released - so even on the hottest days you'll feel cool and comfortable. Durable materials can take on even the toughest work days while reinforced nylon caster wheels help you glide around with ease.



ERGO CHAIR



Features

- Contoured & recycled nylon mesh back with lumbar rest for breathable support
- Adjustable seat depth, to fit all shapes and sizes
- Rotational lumbar support
- Supports up to 115 kg
- Tilt and tension for natural movement.
- Fixed or flexible armrest for natural movement
- Six ergonomic adjustments

Specs

Dimensions

66W x 58-63D x 106-114H (cm)

Weight

14 kg

Package Details

Box Count: 1

Dimensions: 35W x 70D x 62H (cm)

Gross Weight: 15 kg

Colours

- Eucalypt
- Slate
- Night

Ergo Pro Chair

Ultra-supportive, ultra-comfortable, and extremely good-looking. Featuring breathable mesh, discreet lumbar and neck support, and with every adjustment under the sun, the Ergo Pro is sure to keep you performing at your best for hours on end.

Give your back a break without breaking the bank

You'll thank us later.

With eight simple and easy to use ergonomic adjustments, the Ergo Pro Chair is your next ultimate ergonomic home office chair, without the designer handbag price tag.

Get rid of neck pain

Stop putting your neck on the line.

The Ergo Pro Chair comes with an adjustable headrest, so you can give your neck a break from supporting that brain of yours working overtime.

No more back sweats

Stay cool under pressure.

The double-woven mesh polyester allows heat and moisture to be released - so even on the hottest days you'll feel cool and comfortable whilst doing your life's work.





Features

- Four position tilt and locking backrest
- BIFMA certified and rated for 6-8 hours of comfortable work
- Supports up to 120 kg
- 4D armrests
- Adjustable and concealed lumbar support
- Adjustable and detachable headrest
- Eight ergonomic adjustments



Specs

Dimensions

63W x 57-61D x 115-125H (cm)

Weight

17 kg

Package Details

Box Count: 1

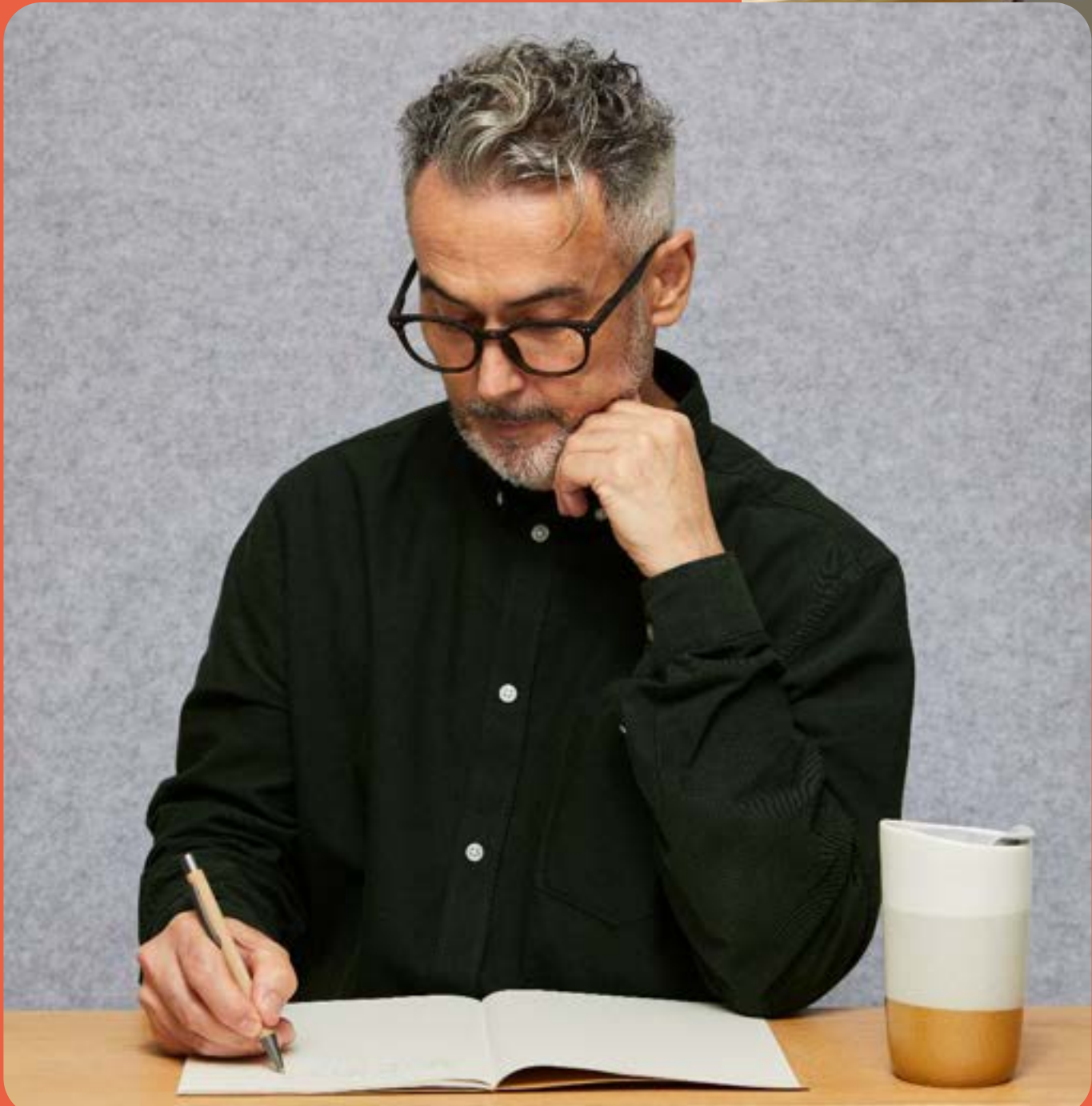
Dimensions: 35W x 70D x 65H (cm)

Gross Weight: 19 kg



Colours

- Deep Ocean
- Earth
- Night



Desks

What's an office without a desk? Not much, really. From standing to sitting to ones everyone can fit around, we've got the desk for you to do your best work on.

Single Sit-Stand Desk

Every office needs a desk - but this one lets you move more than ever. Meet our Stand Up Desk. Stylish, durable and adjustable to a range of heights, the only thing it doesn't do is your job for you.

Stand or sit in seconds

With low-decibel dual motors and three-stage lift columns, you can transition up and down with ease. Better yet, you can save your favourite heights so you never lose focus.

Functional and fashionable

We've blended ergonomics with elegant and modern style. Clever details work for you (like an integrated cable port) while the timeless materials will look the part in any office.

Smooth as can be

The coated steel base and adjustable feet reduce oscillation and ensure stability on any surface. That means making adjustments are so smooth, you won't spill your coffee.



STAND UP DESK



Features

- Dual low-decibel motors with centimeter level adjustment
- Lift capacity of 125 kg and an extended lift range of 65 - 130 (cm)
- Three stage columns and leveling feet for exceptional stability
- Brushed grommet for cable routing and optional in-desk power

Specs

Dimensions

Small TT: 120W x 70D x 66-131H (cm)
Large TT: 150W x 75D x 66-131H (cm)
Feet: 70 cm



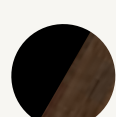


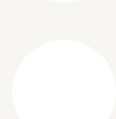
Weight

Small: 46 kg
Large: 51 kg

Package Details

Box Count: 2
Box 1 (frame): 108W x 31D x 22H (cm). 32 kg
Box 2 (small top): 127W x 77D x 7H (cm). 18 kg
Box 2 (large top): 157W x 82D x 7H (cm). 23 kg

Finish

-  Black Legs, Maple Top
-  White Legs, Maple Top
-  Black Legs, Walnut Top
-  White Legs, Walnut Top
-  Black Legs, White Top
-  White Legs, White Top

Single Desk

We all need a desk where we can do our best work. Smart, sturdy and easy to assemble, our Single Desk is inspired by the needs of the new workspace - and it's everything you could ever ask for.

A Desk designed to be unbreakable

Your new forever desk.

Our laminate tops will stand the test of time thanks to them being scratch resistant and waterproof, so you can go ahead and spill the beans guilt free.

Aesthetics sure to give the neighbours home office envy

Let the FOMO begin.

Bevelled edge table tops, natural looking laminate finishes and flared powder coated legs make for a sleek and modern design, sure to make the Karen's of next door froth at the bit.

Made for future generations

Because we care.

With tops made from 80% recycled materials and packaging using recycled cardboard, we're making desks without costing the earth.



SINGLE DESK



Features

- Beveled desktop in a maple woodgrain finish, impact and stain-resistant
- Steel frame supports 300 kg with aluminium flared legs and adjustable feet
- Brushed double-flip grommet for cable routing and optional in-desk power

Specs

Dimensions

Small TT: 120W x 60D x 75H (cm)
Large TT: 150W x 75D x 75H (cm)

Weight

Small: 25 kg
Large: 34 kg

Package Details

Box Count: 3



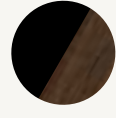



Small

Box 1 (Legs): 84W x 19D x 9H (cm). 4 kg
Box 2 (Frame): 97W x 19D x 7H (cm). 8 kg
Box 3 (Top): 127W x 67D x 7H (cm). 15 kg

Large

Box 1 (Legs): 84W x 19D x 9H (cm). 4 kg
Box 2 (Frame): 127W x 52D x 7H (cm). 8 kg
Box 3 (Top): 157W x 82D x 7H (cm). 23 kg

Finish

-  Black Legs, Maple Top
-  White Legs, Maple Top
-  Black Legs, Walnut Top
-  White Legs, Walnut Top
-  Black Legs, White Top
-  White Legs, White Top

Corner Desk

All the benefits of a single workstation, plus the added convenience of stunning, lockable storage right next to your desk. The corner desk features a scratch-resistant, waterproof laminate top with plenty of leg room and a sturdy steel frame.

A Desk designed to be unbreakable

Your new forever desk.

Our laminate tops will stand the test of time thanks to them being scratch resistant and waterproof, so you can go ahead and spill the beans guilt free.

Aesthetics sure to give the neighbours home office envy

Let the FOMO begin.

Bevelled edge table tops, natural looking laminate finishes and flared powder coated legs make for a sleek and modern design, sure to make the Karen's of next door froth at the bit.

Extra Storage

Wherever you work, you can never have enough storage. With spacious shelves and a lockable cabinet for valuables, our Credenza is a practical piece for any work space.



CORNER DESK



Features

- On the outside, a waterproof, scratch-resistant laminate available in maple, walnut or white
- On the inside, a heavy-duty, high-density particle board core made up of 80% or more of recycled timber
- Steel frame supports 300 kg with aluminium flared legs and adjustable feet
- Brushed double-flip grommet for cable routing
- Lock and key storage, for peace of mind
- Left or right drawer orientation options, for flexibility

Specs

Dimensions

Desk: 150W x 75D x 75H (cm)
Credenza: 120W x 52D x 75H (cm)

Weight

Desk: 34 kg
Credenza: 50 kg

Package Details

Box Count: 4

Desk

Box 1 (Legs): 84W x 19D x 9H (cm). 4 kg
Box 2 (Frame): 127W x 52D x 7H (cm). 8 kg
Box 3 (Top): 157W x 82D x 7H (cm). 23 kg

Credenza

Box 4: 127W x 59D x 82H (cm). 35 kg

Finish

Single Desk

Credenza

- Black Legs, Maple Top
- White Legs, Maple Top
- Black Legs, Walnut Top
- White Legs, Walnut Top
- Black Legs, White Top
- White Legs, White Top
- Maple Woodgrain

Single Cabinet

Meet the Single Cabinet - the perfect way to add some style and organization to your office space!

With a modern, minimalistic design, this cabinet is sure to give your office a facelift. But it's not just about the looks - the Single Cabinet is also incredibly functional, with plenty of space to store all your important files and documents.

Features

- Yin yang colour variations, adding some balance to your home or office
- Lock and key for peace of mind
- Top drawer stationary organiser, to bring out your inner Marie Kondo

Specs

Dimensions

30W x 50D x 59H (cm)

Colours

- Night
- Off White



Credenza

Wherever you work, you can never have enough storage. With spacious shelves and a lockable cabinet for valuables, our Credenza is a practical piece for any work space.

Features

- Maple woodgrain finish, impact and stain resistant
- Lock and key storage, for peace of mind
- Matching height to single desk, making the perfect partner in crime

Specs

Dimensions

120W x 52D x 75H (cm)

Weight

34 kg

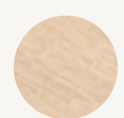
Package Details

Box Count: 1

Dimension: 127W x 59D x 82H (cm)

Gross Weight: 35 kg

Finish



Maple Woodgrain



Cable Tray

It's time to ditch the clutter and embrace a cable-free workspace! With the Cable Tray, you'll be able to avoid the dreaded tangle and keep your workspace looking neat and tidy.

Features

- Ergonomically designed and easy access hinged tray
- Partners up perfectly with a Recess Desk grommet for easy access
- Made with Powder Coated Steel for longevity

Specs

Dimensions

90W x 15D x 8H (cm)

Weight

5 kg

Finish

- Black
- White



Monitor Arm

It lifts your screen. It increases your desk space. It can even save your back. This is our Monitor Arm - and designed with a triple-hinged arm it can bring ergonomics to any space.

Features

- Load capacity 9 kg
- Ideally partners up with monitor screens ranging from 35-81 cm
- 360° rotation, making collaboration simple and easy

Specs

Dimensions

24 cm height range

Weight

3 kg

Package Details

Box Count: 1

Dimension: 45W x 21D x 12H (cm)

Gross Weight: 4 kg

Finish

● Silver



Meeting Room Chair

Treat your team to a chair that will get them excited for those long meetings. Featuring breathable mesh, high levels of support and heaps of adjustments, they'll never want to get out of it.

Features

- Breathable mesh backrest and seat
- 2 position tilt and lock backrest
- Adjustable height mechanism
- BIFMA Certified
- Supports up to 120 kg

Specs

Dimensions

59W x 57D x 89-96H (cm)

Weight

7 kg




Package Details

Box Count: 1

Dimensions: 35W x 70D x 60H (cm)

Gross Weight: 9 kg

Colours

-  Storm
-  Lime
-  Night



Dual Sit-Stand Desk

A match made in heaven - Meet our Dual Sit-Stand Desk. Stylish, durable, and with functionality designed for any office space, this desk is space efficient and will boost the office morale and productivity at the same time - the only thing it doesn't do is your job for you.

Features

- Lift capacity of 125 kg and an extended lift range of 70cm - 130cm
- Three stage columns and leveling feet for exceptional stability
- On the outside, a waterproof, scratch-resistant laminate available in maple, walnut or white
- Brushed grommet for cable routing or scallop cutout for easy monitor arm install

Specs

Dimensions

Small TT: 120W x 70D x 71.5-131H (cm)
Large TT: 150W x 75D x 71.5-131H (cm)

Weight

Small: 69 kg
Large: 79 kg

Package Details

Box Count: 3
Box 1 (frame): 108W x 32D x 28H (cm). 35 kg
Box 2 & 3 (small top): 127W x 77D x 7H (cm). 34 kg
Box 2 & 3 (large top): 157W x 82D x 7H (cm). 44 kg

Finish

- Black Legs, Maple Top
- Black Legs, White Top
- White Legs, Maple Top
- White Legs, White Top
- Black Legs, Walnut Top
- White Legs, Walnut Top



Quad Desk

More than a place to work, our Quad Desk is where teams come together to collaborate. It's all the best bits of our Single Desk, just large enough for four of your team.

Features

- Beveled desktop in a maple woodgrain finish, impact and stain resistant
- Four brushed double-flip grommets for cable routing and optional in-desk power
- Steel frame supports 400 kg with aluminium flared legs and adjustable feet

Specs

Dimensions

240W x 140D x 75H (cm)

Weight

95 kg

Package Details

Box Count: 7

Box 1 (Legs): 84W x 19D x 9H (cm). 4 kg

Box 2 (Frame): 100W x 32D x 12H (cm). 13 kg

Box 3 (Mid Leg): 94W x 63D x 10H (cm). 14 kg

Box 4-7 (Tops): 127W x 77D x 7H (cm). 17 kg

Finish

- 

Black Legs, Maple Top
- 

Black Legs, White Top
- 

White Legs, Maple Top
- 

White Legs, White Top
- 

Black Legs, Walnut Top
- 

White Legs, Walnut Top



Six Seat Desk

Room for two more? For larger teams, our 6 Seat Desk is the right candidate for the job and the perfect place to come together and do your best work.

Features

- Beveled desktop in a maple woodgrain finish, impact and stain resistant
- Six brushed double-flip grommets for cable routing and optional in-desk power
- Steel frame supports 400 kg with aluminium flared legs and adjustable feet

Specs

Dimensions

360W x 140D x 75H (cm)

Weight

145 kg

Package Details

Box Count: 10

Box 1 (Legs): 84W x 19D x 9H (cm). 4 kg

Box 2 (Frame): 134W x 35D x 12H (cm). 15 kg

Box's 3 & 4 (Mid Legs): 94W x 63D x 10H (cm). 14 kg

Box's 5-10 (Tops): 127W x 77D x 7H (cm). 17 kg

Finish

- Black Legs, Maple Top
- Black Legs, White Top
- White Legs, Maple Top
- White Legs, White Top
- Black Legs, Walnut Top
- White Legs, Walnut Top



Meeting Table

When it comes to our Conference Table, there’s room for everyone. In fact, it’s the largest table in our collection - but don’t let its size fool you. It’s just as durable and stylish as all our other desks.

Features

- Beveled desktop in a maple woodgrain finish, impact and stain resistant
- Two brushed double-flip grommets for cable routing and optional in-desk power
- Steel frame supports 400 kg with aluminium flared legs and adjustable feet

Specs

Dimensions

300W x 120D x 75H (cm)

Weight

90 kg

Package Details

- Box Count: 5
- Box 1 (Legs): 84W x 19D x 9H (cm). 4 kg
- Box 2 (Frame): 131W x 29D x 12H (cm). 15 kg
- Box 3 (Mid Leg): 94W x 63D x 10H (cm). 14 kg
- Box's 4 & 5 (Tops): 157W x 127D x 7H (cm). 30 kg

Finish

- Black Legs, Maple Top
- Black Legs, White Top
- White Legs, Maple Top
- White Legs, White Top
- Black Legs, Walnut Top
- White Legs, Walnut Top



Desk Screens

Looking for a little peace and quiet in the office? Our beautifully-designed felt Desk Screens will add privacy and block out the office chatter, letting you focus on what's important.

Features

- PET felt material made from 70% recycled plastic bottles, so sound can be kept out without costing the earth
- Flexible ordering, with single screens or the fully enclosed Quad & 6-person workstation packages
- Easy and simple installation

Specs

Dimensions

Front Screen: 110W x 35H (cm)

Side Screen: 60W x 35H (cm)

Weight

Quad: 3 kg

6-Pax: 4 kg

Package Details

Quad Package: 120W x 35D x 7H (cm)

6-Pax Package: 120W x 35D x 8H (cm)

Colours

 Storm Cloud





Soundproof Booths

Affordable and fast soundproof solutions that solve meeting room congestion and mute noisy co-workers.

The Nook

Specifically designed for individuals. The Nook offers a fully soundproof space for meetings and focused work.

For those who want to take or make a call. Get into the deep work zone. Write a killer presentation. Nook is your blank canvas for the open office space to tune out distractions and focus on what's essential.

Features

- Ventilated with 2 × 20V powered fans, keeping you cool under pressure.
- Double sided glass walls, allowing for natural flow of light
- 1 x AU GPO socket & dual fan/light switch, allowing for flexibility
- Sound insulation made from recycled materials, to tune out the noise.
- 28 dB sound reduction

Specs

Dimensions

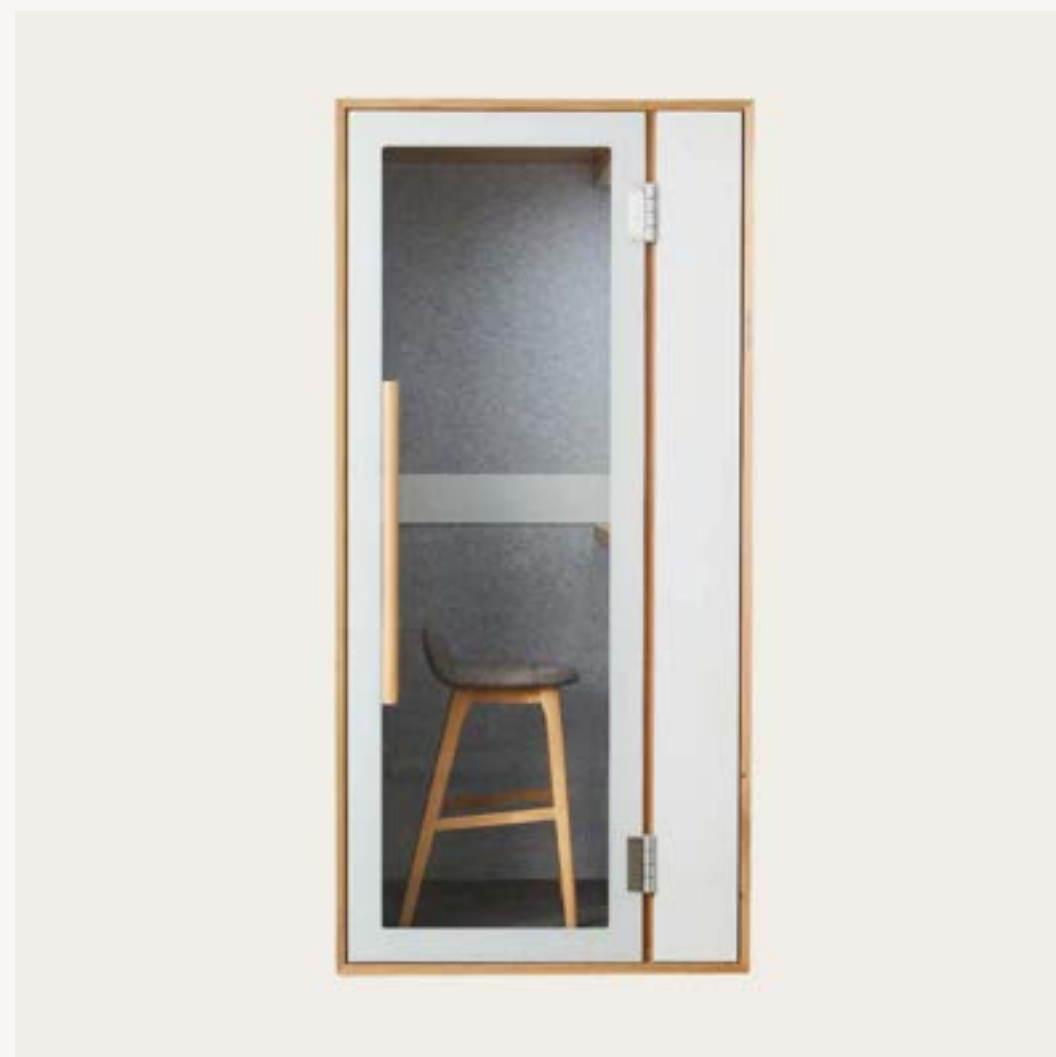
105W x 113D x 220H (cm)

Weight

220 kg

Colours

- ☐ White
- ☒ Black



The Cove

Designed with productivity in mind, The Cove provides a space-efficient solution for individuals or teams of up to 4 who want a fully soundproof space for meetings and focused work.

Assembled in your workplace by us, The Cove is equipped with sensors that ensure the space is fully ventilated and well lit every time somebody enters.

Features

- Ventilated with 2 × 20V powered fans, keeping you cool under pressure
- Flexible to move around the office, with optional add-on castors (no extra cost)
- DDA compliant 850mm width door entrance with steel ramp
- Sofa bases can be removed and desk folded down to allow for wheelchair access
- Sound insulation made from recycled materials to tune out the noise
- Optional add-on Jabra 180 degree camera with 32-Inch 4K Dell monitor
- 28 dB sound reduction

Specs

Dimensions

230w x 120D x 230H (cm)

Weight

490 kg

Colours

-  White
-  Black





Cafe & Lounge

Sip, snack, and sit pretty with our cafe and lounge furniture - guaranteed to make your coffee taste even better (well, maybe not guaranteed, but it definitely won't hurt!)

Single Sofa

With a range of bold and bright color options available, you can choose the perfect shade to match your unique office vibe. And the best part? It's not just about the looks - this sofa is incredibly comfortable too, with plush cushions that make it the perfect spot to kick back and relax.

Features

- Polyester upholstered cushion, made for commercial use
- High density cushion in colours that make any office lounge space pop - other colours available upon request
- Teams up well with the Recess Double Sofa

Specs

Dimensions

99W x 84D x 82H (cm)

Weight

34 kg



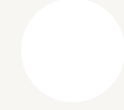
Package Details

Box Count: 1

Dimension: 102W x 84D x 78H (cm)

Gross Weight: 36 kg

Colours

-  Sage Green
-  Deep Ocean Blue
-  Cloud White



Double Sofa

With a variety of color options to choose from, this sofa is the perfect way to add some personality and pizzazz to your office. Whether you're outfitting a waiting room, reception area, or break room, its sturdy construction means it can withstand the wear and tear of daily use, while its stylish design will keep your office looking fresh and modern.

Features

- Polyester upholstered cushion, made for commercial use
- High density cushion in colours that make any office lounge space pop - other colours available upon request
- Teams up well with the Recess Single Sofa

Specs

Dimensions

182W x 84D x 80H (cm)

Weight

57 kg

Package Details

Box Count: 1

Dimension: 182W x 84D x 78H (cm)

Gross Weight: 59 kg

Colours

- Sage Green
- Deep Ocean Blue
- Cloud White



Low Cafe Table

A table to encourage conversation and collaboration. Made with a high-quality laminate finished top and a steel base, our café table is built to withstand the wear and tear of daily use. So whether you're enjoying a cup of coffee with coworkers or hosting a lunchtime meeting, you can trust that our table will be there for you through it all.

Features

- On the outside, a waterproof, scratch-resistant laminate available in maple, walnut or white
- On the inside, a heavy-duty, high-density particle board core made up of 80% or more of recycled timber
- Steel frame supports 500 kg with solid steel round base
- Teams up well with the Recess Cafe Chair

Specs

Dimensions

120D x 75H (cm)

Weight

48 kg

Package Details

Box Count: 3

Box 1 (Round Base): 62W x 62D x 4H (cm). 25 kg

Box 2 (Steel Tube): 76W x 14D x 14H (cm). 5 kg

Box 3 (Top): 129W x 129D x 7H. 20 kg

Finish

- White Top, White Leg
- Maple Top, White Leg
- White Top, Black Leg
- Maple Top, Black Leg
- Walnut Top, White Leg
- Walnut Top, Black Leg



Cafe Chair

Our Cafe Chair is proof that sometimes less really is more.

Sleek, Modern & Comfortable. This chair will make your team feel right at home, whether you're chowing down on lunch or taking a much-needed break from the daily grind.

Made with high-quality materials, our café chair is built to last. Its sturdy build ensures it can stand the test of time so you can take it with you as you grow.

Features

- PP injection moulded cafe chair
- Washable and stackable
- Durable and recyclable materials
- Colours that pop in any office cafe space - other colours available upon request
- Teams up well with the Recess Low Cafe Table

Specs

Dimensions

79H X 48W X 51D (cm)

Weight

4 kg

Package Details

Box Count: 1 (2 Chairs per box)

Dimensions: 54.5W x 54.5D x 87H (cm)

Gross Weight: 9kg

Finish

- Earth Orange
- Storm Cloud Grey
- Deep Ocean Blue



Guest Table

Constructed with a premium laminate finish top and a durable steel base, our Guest Table is designed to endure the demands of constant commercial usage, whilst at the same time giving visitors 'wow' like first impressions. So let your guests sit back, relax - perhaps whilst enjoying a cool sparkling water or hot tea - and take in the beauty as they reconsider their own office makeover.

Features

- On the outside, a waterproof, scratch-resistant laminate available in maple, walnut or white
- On the inside, a heavy-duty, high-density particle board core made up of 80% or more of recycled timber
- Steel frame supports 300kg with aluminium flared legs and adjustable feet
- Teams up well with the Recess Guest Chair

Specs

Dimensions

90D x 45H (cm)

Weight

39 kg

Package Details

Box Count: 3

Box 1 (Round Base): 62W x 62D x 4H (cm). 25kg

Box 2 (Steel Tube): 46W x 14D x 14H (cm). 3kg

Box 3 (Top): 99W x 99D x 7H. 13kg

Finish

- White Top, White Leg
- Maple Top, White Leg
- White Top, Black Leg
- Maple Top, Black Leg
- Walnut Top, White Leg
- Walnut Top, Black Leg



Guest Chair

It not only looks sleek and modern, but is also super sturdy, ensuring guests can sit comfortably and confidently and with a variety of bright and bold color options to choose from to fit your unique office vibe.

Whether you're fitting out a waiting room, conference room, or break area, our guest chair is the perfect choice. Its comfortable seat and backrest will keep your guests relaxed and happy, while its durable construction ensures that it'll be a staple of your office space for years to come.

Features

- A ribbed fiber weave crafted to endure extensive commercial use over the years
- High density cushion in colours that make any cafe space pop - other colours available upon request
- Teams up well with the Recess Guest Table

Specs

Dimensions

61W x 63D x 83H (cm)

Weight

11 kg

Package Details

Box Count: 1 (2 Chairs per box)

Dimensions: 66W x 66D x 57H (cm)

Gross Weight: 24.5kg

Finish

- Earth Orange
- Storm Cloud Grey
- Deep Ocean Blue



High Cafe Table

A table to encourage conversation and collaboration. Made with a high-quality laminate finished top and a steel base, our café table is built to withstand the wear and tear of daily use. So whether you're enjoying a cup of coffee with coworkers or hosting a lunchtime meeting, you can trust that our table will be there for you through it all.

Features

- On the outside, a waterproof, scratch-resistant laminate available in maple, walnut or white
- On the inside, a heavy-duty, high-density particle board core made up of 80% or more of recycled timber
- Steel frame supports 300 kg with aluminium flared legs and adjustable feet
- Teams up well with the Recess Cafe Stool

Specs

Dimensions

90D x 105H (cm)

Weight

41 kg

Package Details

Box Count: 3

Box 1 (Round Base): 62W x 62D x 4H (cm). 25 kg

Box 2 (Steel Tube): 106W x 14D x 14H (cm). 5 kg

Box 3 (Top): 99W x 99D x 7H. 13 kg

Finish

- White Top, White Leg
- Maple Top, White Leg
- White Top, Black Leg
- Maple Top, Black Leg
- Walnut Top, White Leg
- Walnut Top, Black Leg



Cafe Stool

Where work meets play, and productivity meets comfort. Welcome the ultimate café vibe into your workspace. Imagine sipping your favorite beverage, while sitting on this comfortable stool, and getting all your work done with ease.

Made with the highest quality materials, this café stool is built to last. Its steel base and comfortable seat are designed to withstand the wear and tear of daily use. So, not only will it bring joy to your office, but it'll also serve you for years to come.

Features

- A ribbed fiber weave crafted to endure extensive commercial use over the years
- A low-profile backrest fosters movement and encourages upright posture
- High density cushion in colours that make any cafe space pop - other colours available upon request
- Teams up well with the Recess High Cafe Table

Specs

Dimensions

52W x 51D x 98H (cm)

Weight

10 kg




Package Details

Box Count: 1 (2 Chairs per box)

Dimensions: 54.5W x 54.5D x 87H (cm)

Gross Weight: 4.5kg

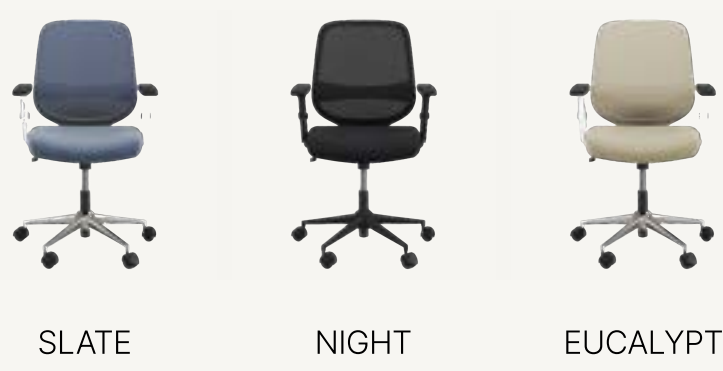
Finish

-  Earth
-  Storm Cloud
-  Deep Ocean

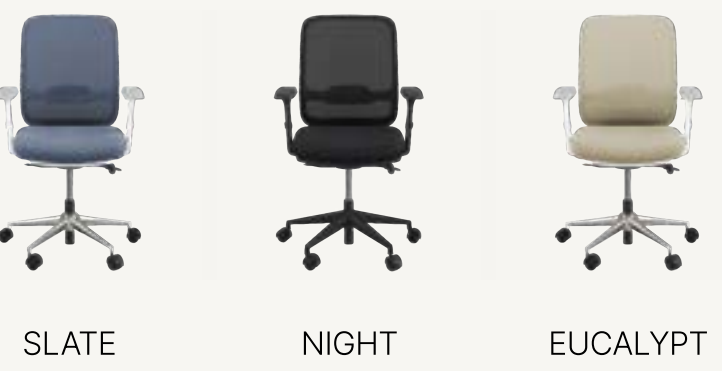


Workplace Chairs

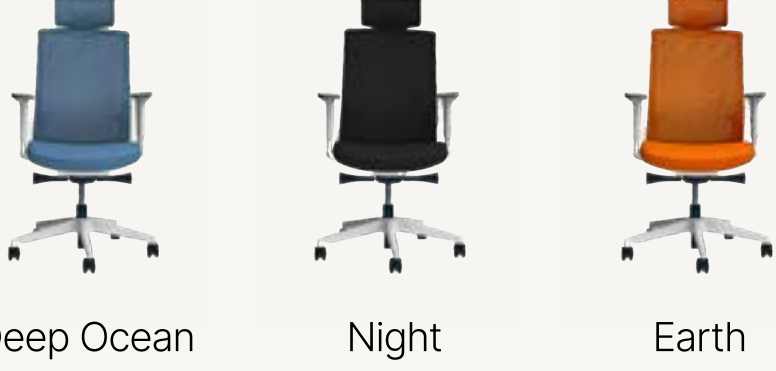
Everyday Chair
\$265 +GST
p. 07



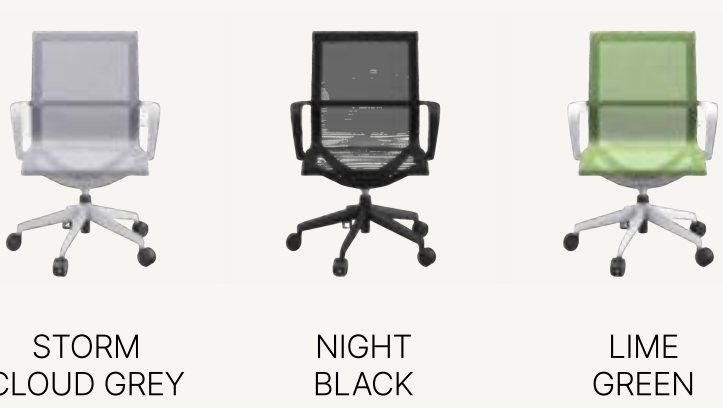
Ergo Chair
\$340 +GST
p. 09



Ergo Pro Chair
\$405 +GST
p. 11



Meeting Room Chair
\$245 +GST
p. 24

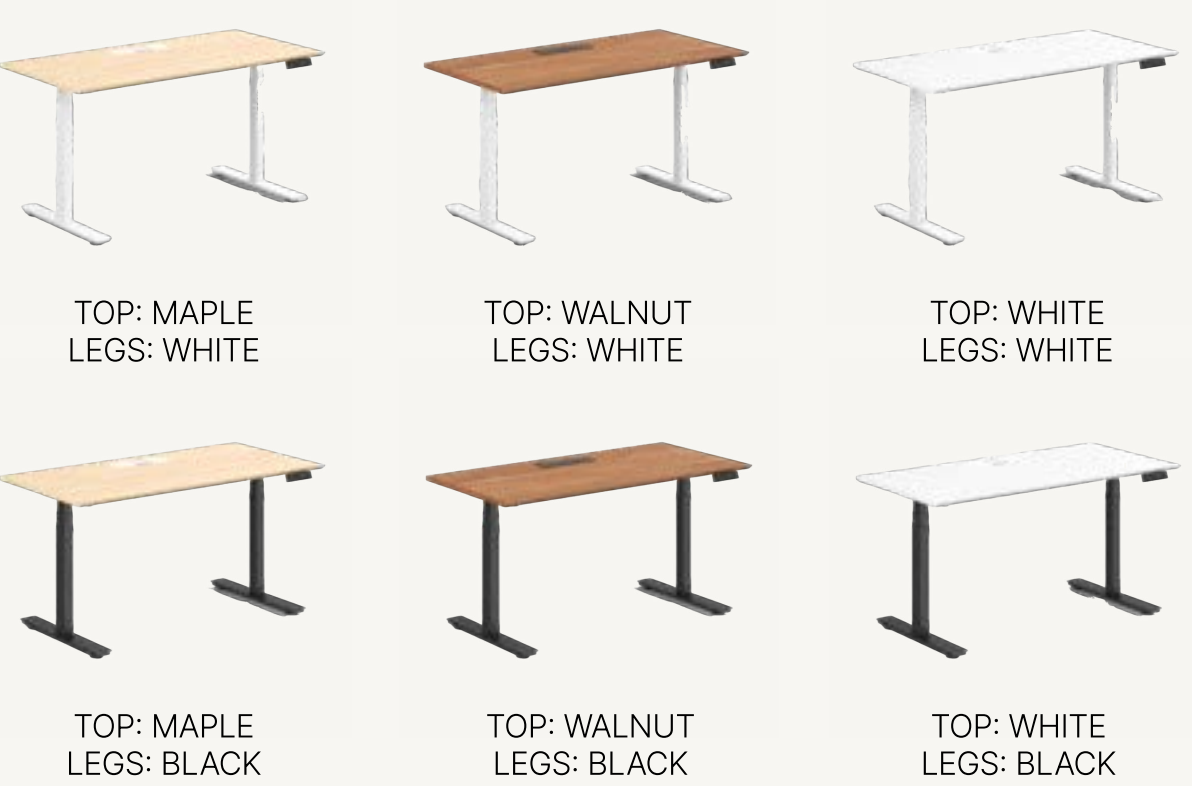


Desks

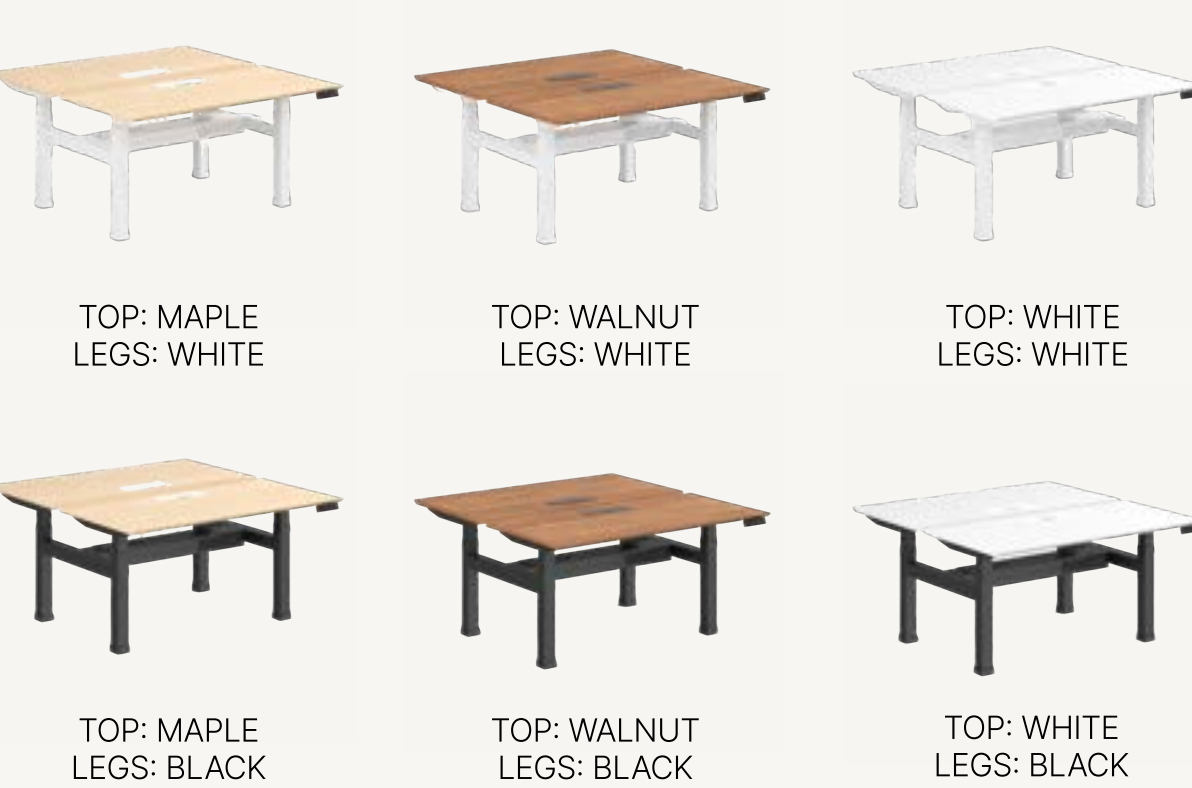
Single Desk
\$465-\$625 +GST
p. 16



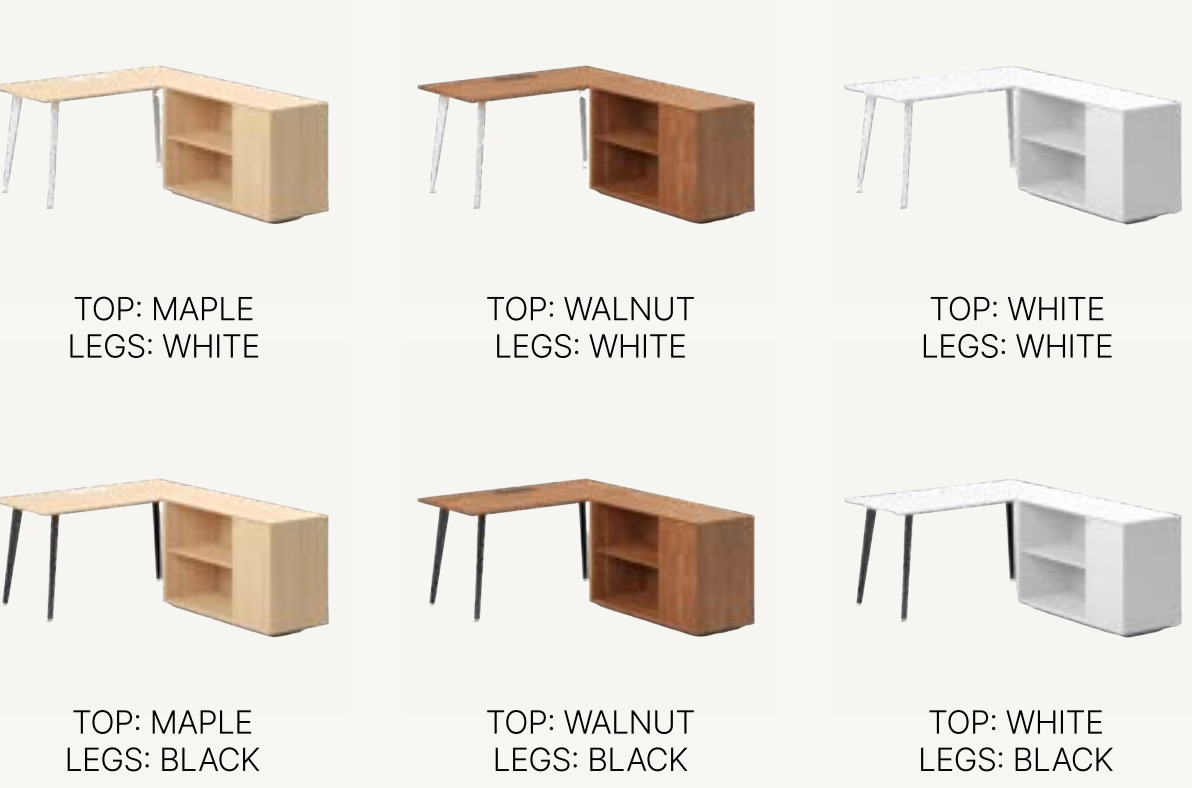
Single Sit-Stand Desk
\$745-875 +GST
p. 14



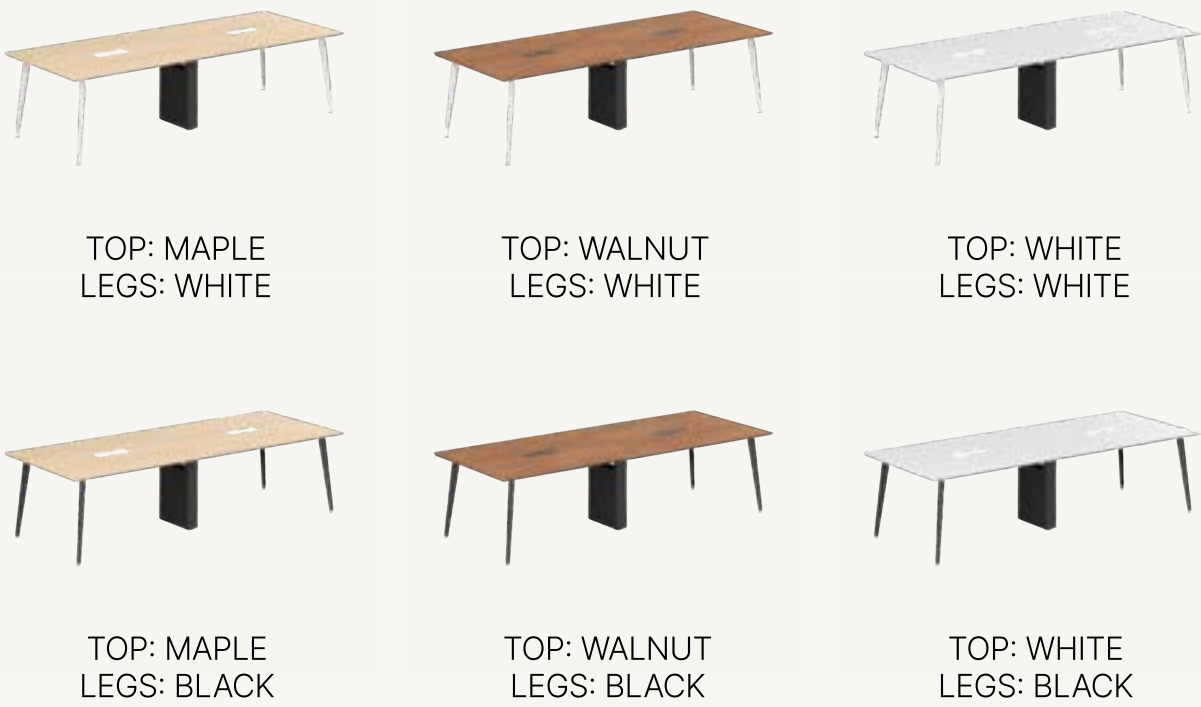
Dual Sit-Stand Desk
\$1,695-1895 +GST
p. 25



Corner Desk
\$1,195 +GST
p. 18



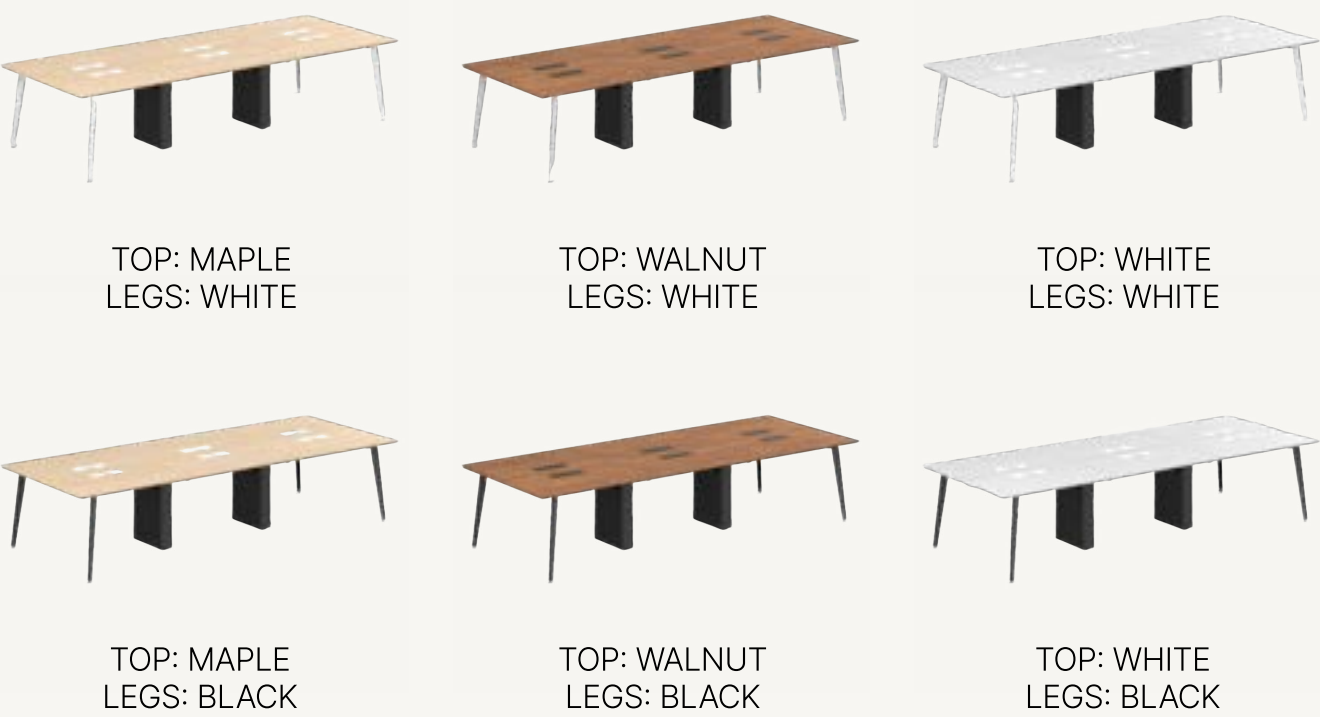
Meeting Table
\$1,325 +GST
p. 28



Quad Desk
\$1,445 +GST
p. 26

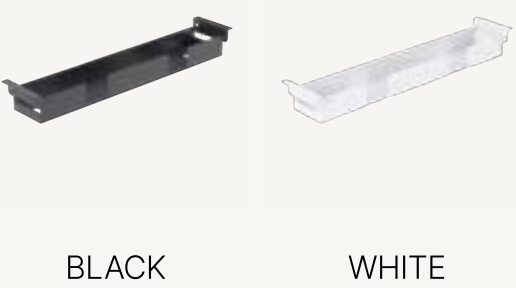


Six-Seat Desk
\$2,245 +GST
p. 27



Accessories

Cable Tray with 4 x GPO
\$140 +GST
p. 22



Monitor Arm
\$130 +GST
p. 23



Desk Screens
\$445 - \$665 +GST
p. 29



Storage

Single Cabinet
\$220
p. 20



Credenza
\$645 +GST
p. 21



Booths

The Nook
\$6,995 +GST
31



The Cove
\$16,495 +GST
32



Lounge

Single Sofa
\$695 +GST
p. 34



Double Sofa
\$1,175 +GST
p. 35



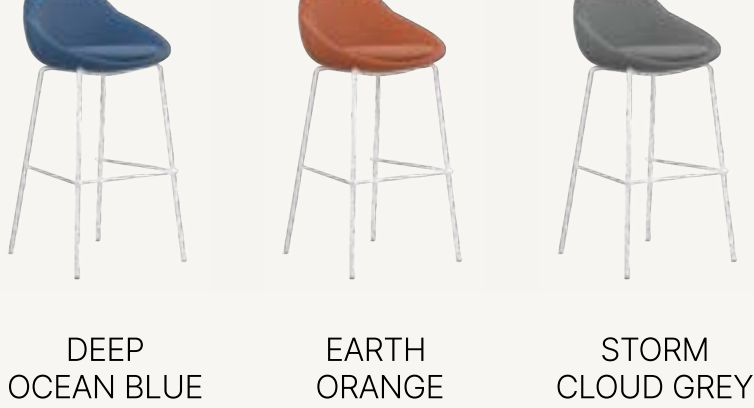
Cafe Chair
\$115 +GST
p. 37



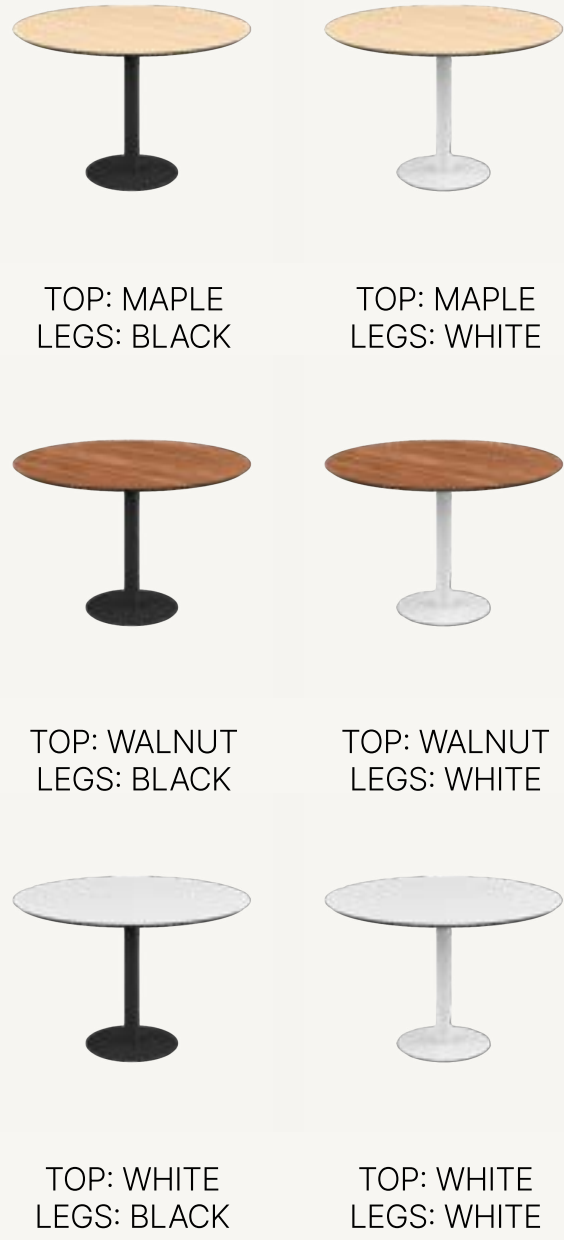
Guest Chair
\$545 +GST
p. 39



Cafe Stool
\$345 +GST
p. 41



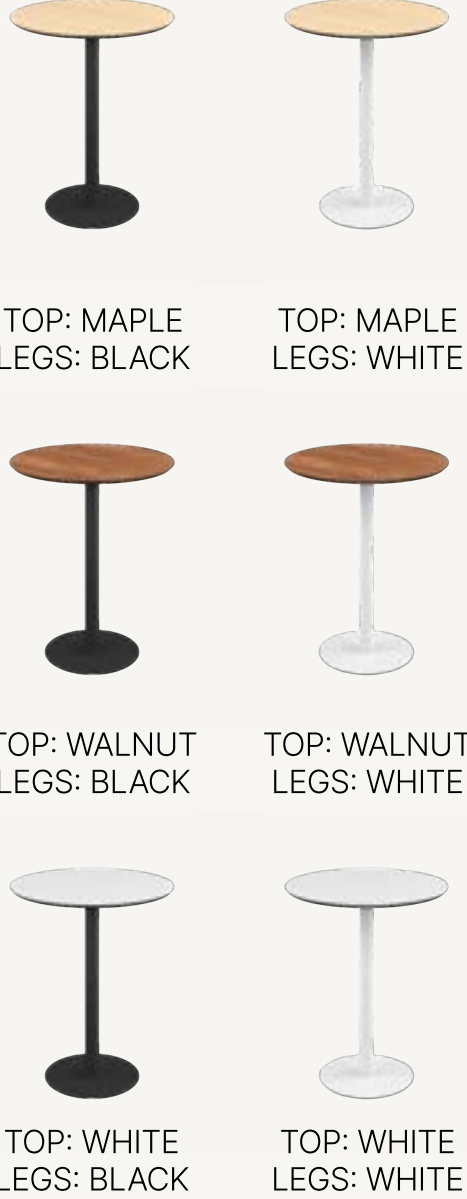
Low Cafe Table
\$745 +GST
p. 36

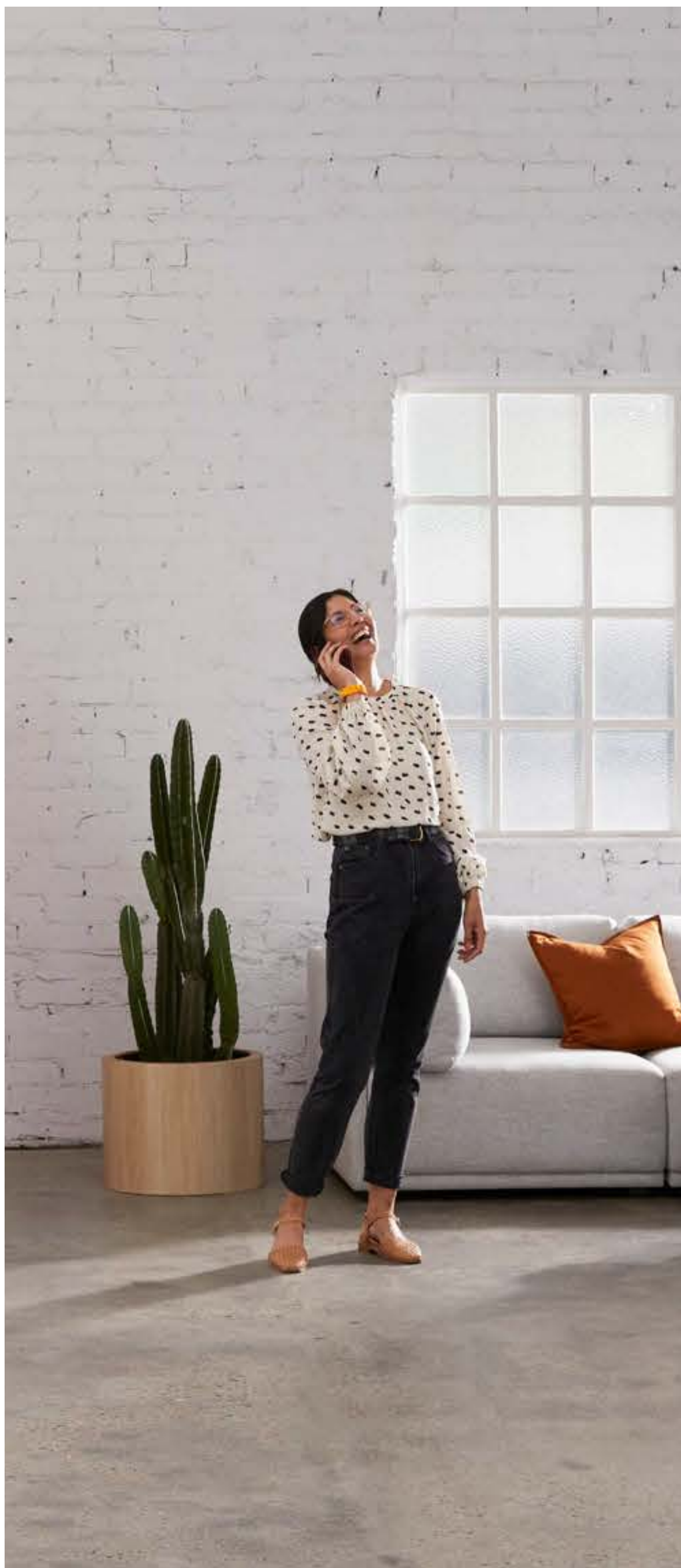


Guest Table
\$695 +GST
p. 38



High Cafe Table
\$695 +GST
p. 40





Get in touch

Complimentary space planning

All in one delivery and installation by Recess

30 days risk free return policy