

Class 23/32: The **CHATEAU** laminate floor is designed for:

- Heavy domestic use: Bedrooms, living rooms, kitchens, entrances
- General commercial use : Classrooms, small offices, hotels, boutiques



Class 23/33: The **CHATEAU XTRA** laminate floor is designed for:

- Heavy domestic use: Bedrooms, living rooms, kitchens, entrances
- Heavy commercial use: Corridors, department stores, schools, open plan office



Chateau is a unique laminate that can be installed in multiple patterns due to the exclusive Chateau locking system developed by BerryAlloc engineers:

- The "Herringbone" and "Mosaic" pattern requires 2 plank types: A-planks and B-planks. These are packed separately, so do not forget to mention to your BerryAlloc dealer that you need both types if you choose this pattern.
- The "Shipdeck" and "Ladder" pattern only require 1 plank type: the A-planks.
- The Chateau "Herringbone" and "Shipdeck" patterns are designed for floating installation, but can also be fully glued to the subfloor.

For a perfect result that fulfills the warranty conditions, we advise to follow the below mentioned installation instructions carefully.

## 1. planning your installation



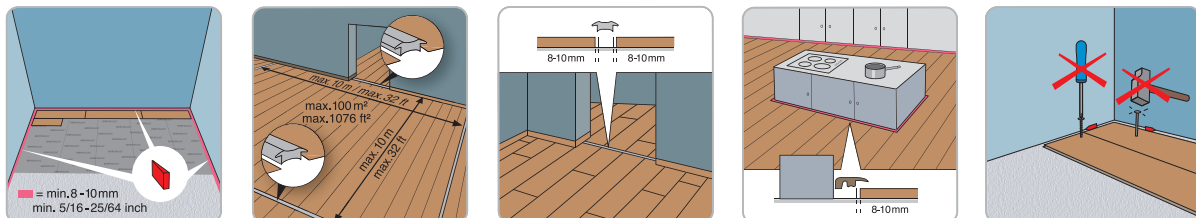
It is important to store the laminate boxes at room temperature for at least 48 hours before the installation. Do not open the packs and stack them in a way so they have maximum contact with the air. The floor should be installed at a room temperature of 18-25°C and a relative humidity of 40-60%.

### tools

- Electrical or hand saw
- Spacers
- Measurer and pencil, T-square, fast drying wood glue

For your safety, use protective clothing: gloves, dust mask, protective glasses.

Do not forget the matching skirtings and finishing profiles (doorways, transitions to other floors,...).

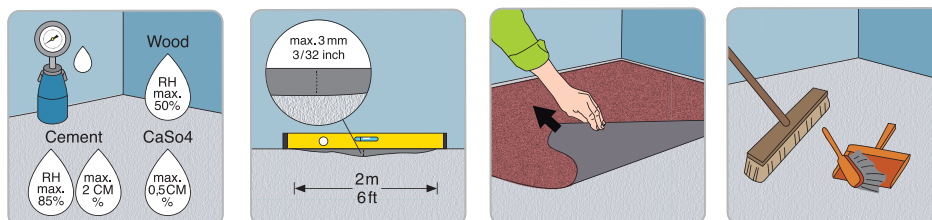


Chateau can be installed as a floating floor, or can be fully glued to the subfloor, depending on the floor pattern.

- Do not screw the floorboards to the subfloor.
- Do not install laminate floor under fixed constructions such as kitchen cabinets or built-in closets
- Leave a 8-10mm expansion gap to walls and other fixed constructions so that the flooring can move.
- Always install expansion profiles in doorways.
- In areas which do not join symmetrically and when the room length/width exceeds 10m, install expansion profiles

## 2. preparing the subfloor

BerryAlloc laminate can be installed on most hard subfloors, e.g. chip/plasterboards, PVC or concrete (be sure that the existing subfloor construction is fixed).



The subfloor must be totally dry:

- Wooden and wood based material, max. 50 % relative humidity
- Concrete and light concrete floor, max. 2,0 CM % (1,8 CM % if floor heating)
- Plaster and plaster based floor, max. 0,5 CM % (0,3 CM % if floor heating)

The subfloor has to be even (max. height difference of 3mm per 2m).

Sharp edges must be smoothed and holes filled.

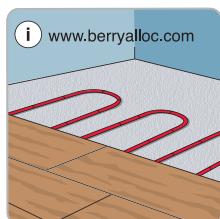
This is important because an uneven subfloor can cause squeaking noises.

Soft material like a wall-to-wall carpet needs to be removed.

Clean the subfloor before you start the installation.

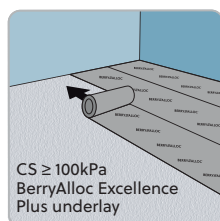
On an existing wooden floor, BerryAlloc laminate should be installed across the old floorboards.

## 3. floor heating/cooling



If you have a subfloor heating system, be sure to read our separate [manual for installing laminate on top of floor heating](#).

## 4. underlays



BerryAlloc underlays are specially developed for our floors, and with the same high quality standards, to ensure a perfect result. The specific design of the Chateau Xtra planks requires a high performance underlay with a compression strength of min. 100 kPa. The BerryAlloc Excellence Plus underlay is the perfect base for the herringbone and shipdeck installation.

In fully glued installations, the laminate floor has to be glued to the subfloor. In that case, you can not use an underlay.

## 5. installing your Chateau floor

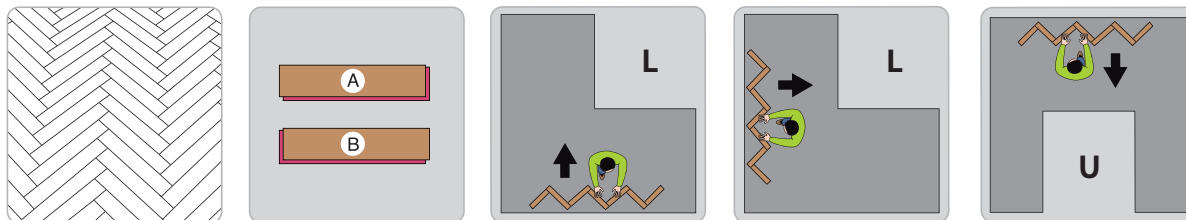


Check all planks for visible defects in optimal light conditions, both before and during installation. Planks with defects must not be used.

For the most natural floor pattern, make sure to mix the designs of the planks across the floor.

Chateau is a dream floor for creative installers. Multiple patterns are possible, and a wide variety of colors allows you to mix and match, and add some personality to your royal floor: **herringbone**, **shipdeck**, **ladder** and **mosaic**.

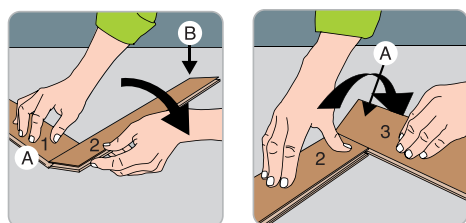
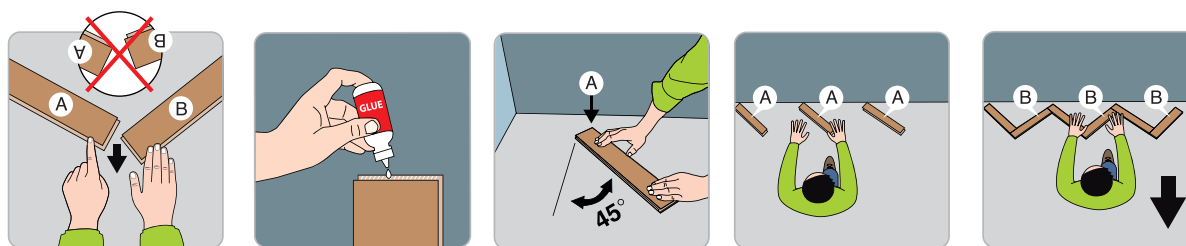
## 5.1 the herringbone pattern



For the herringbone pattern, you need 2 plank types: A-planks and B-planks. When you take a plank and turn the long groove side towards you, the groove continues on the **RIGHT** side for the A-planks and on the **LEFT** side for the B-planks. Always make sure the grooves are pointing towards the laying direction.

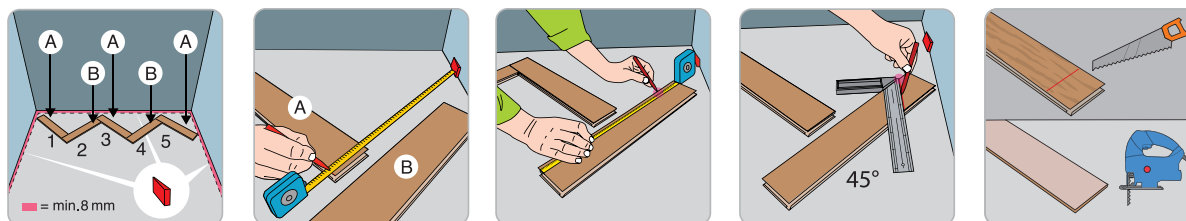
All planks are marked with "A" or "B" in the backprint.

Consider the shape of your room when you choose your start wall. For L- or U-shaped rooms, please check the drawings.



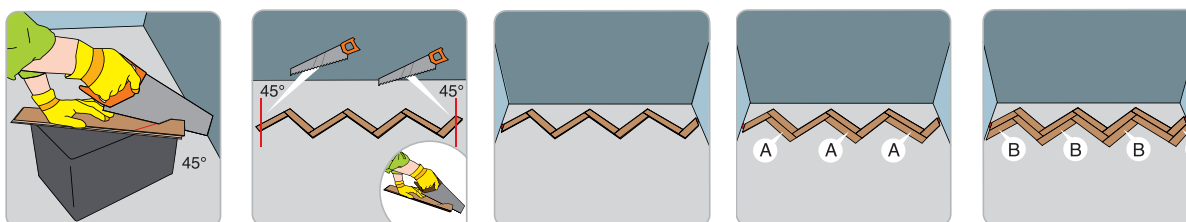
We strongly recommend to apply a fast drying wood glue to both short sides of the planks for an optimal floor stability.

Start with a row of A-planks in 45°, and then connect them with B-planks to finish a first row.



Consider the expansion gap at the sides, when measuring the size of the last plank in the row.

If using a hand saw, cut on the pattern side, if using an electrical jigsaw, always cut on the back side of the plank. A sharp saw blade is a must for the best result!



Continue with a row of A-planks and then a row of B-planks, until you have at least 4 rows.