



AV CART

SS-AVJ42KBCDL



LINE LEADER

Contact Us:

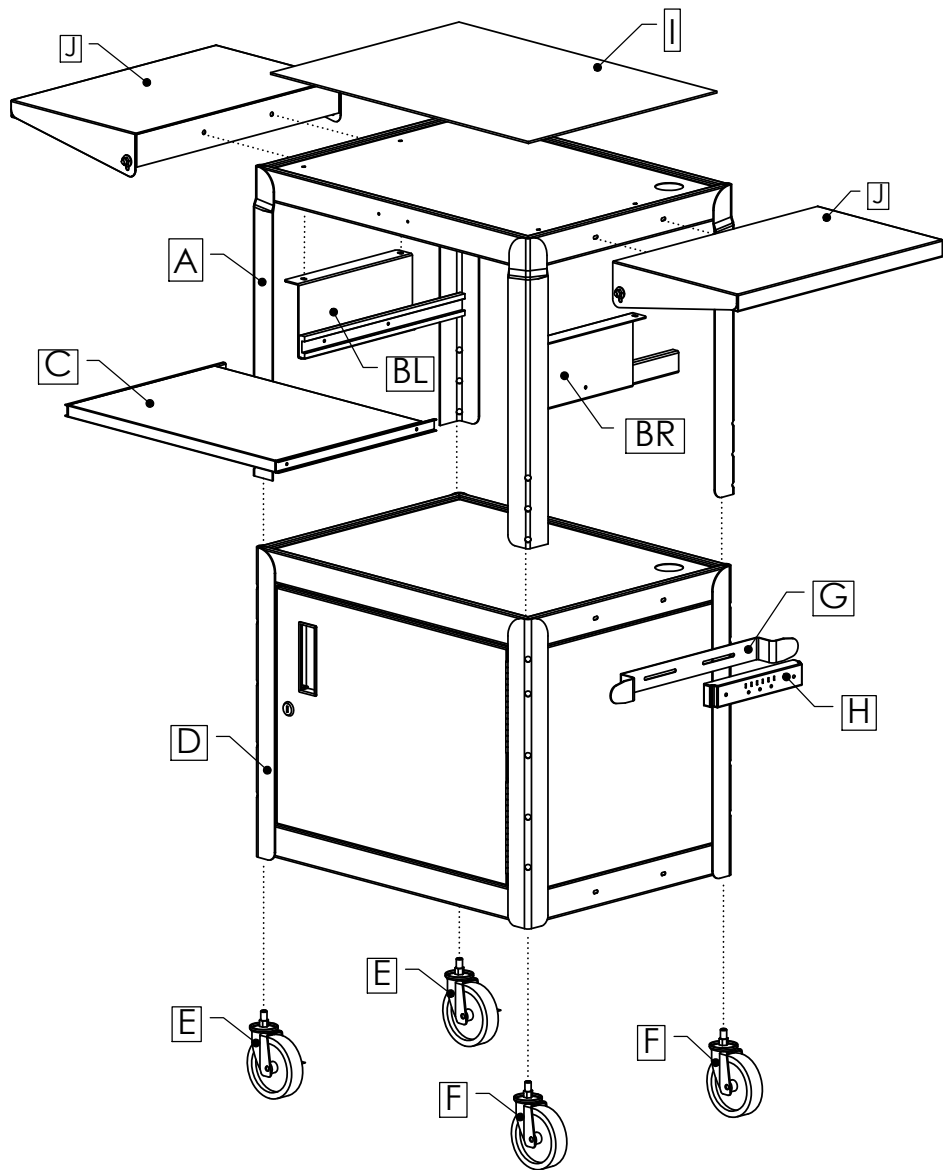
www.standsteady.com

customerservice@standsteady.com

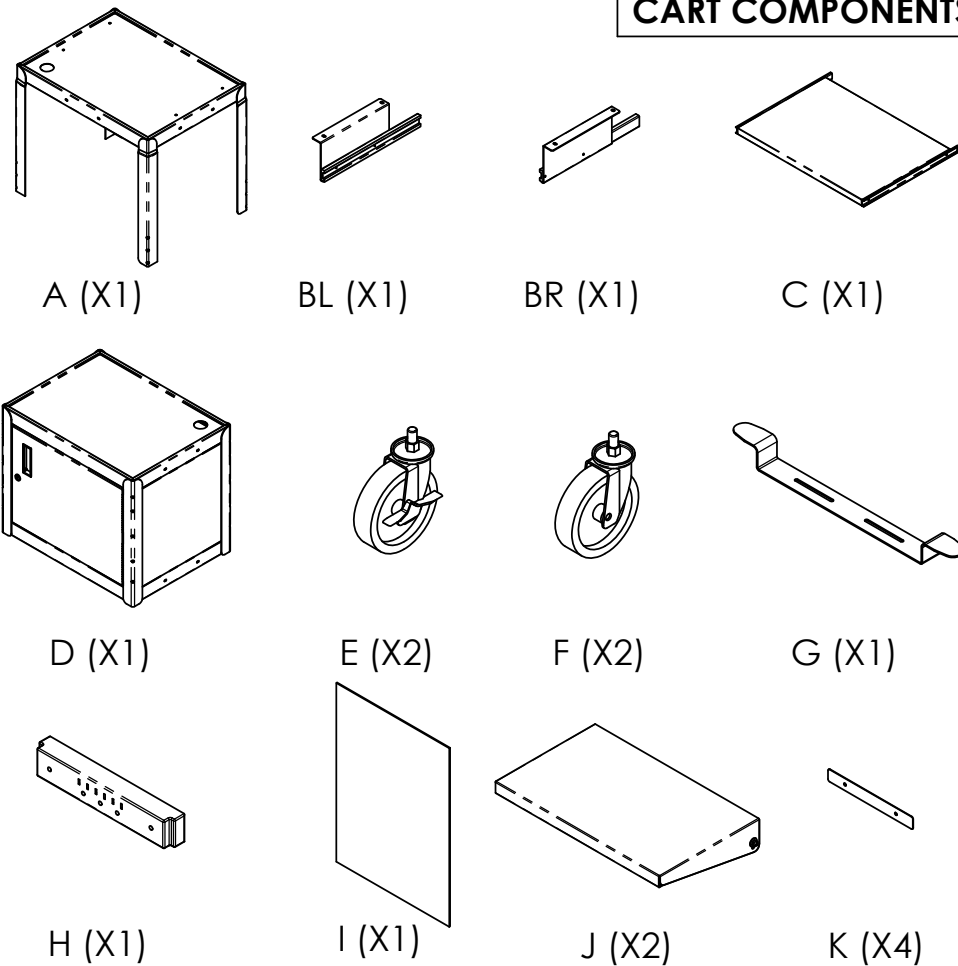
1-703-688-DESK (3375)

Made in Taiwan

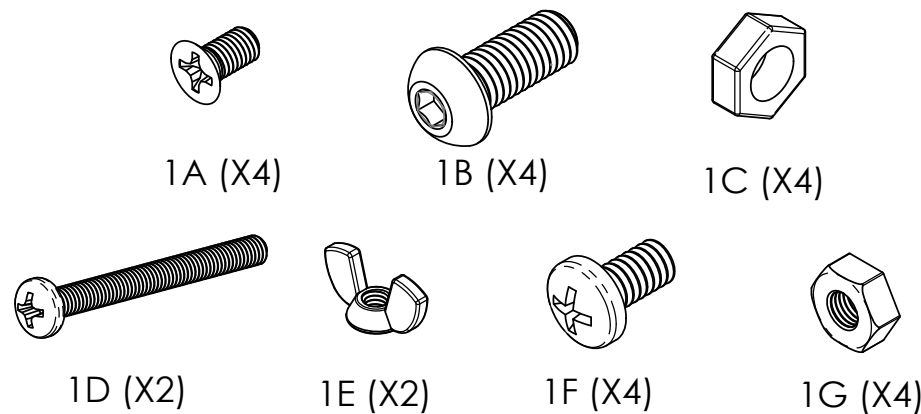
PRODUCT OVERVIEW



CART COMPONENTS



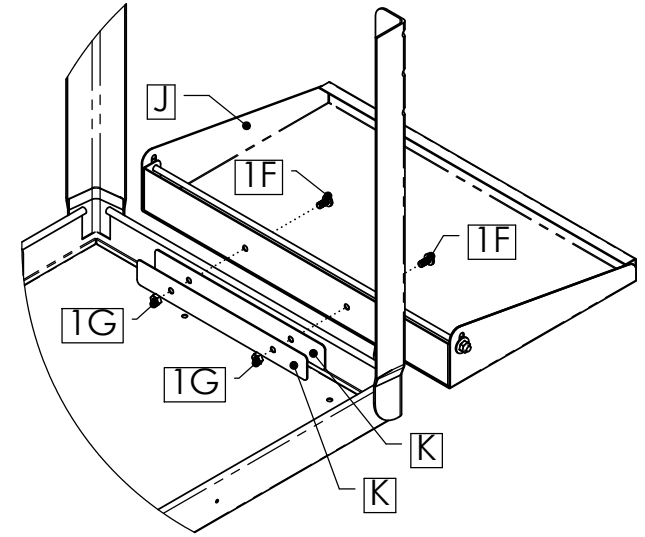
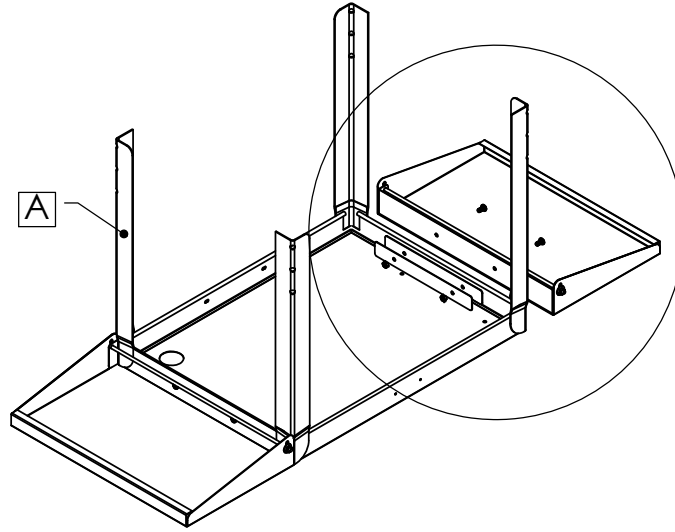
HARDWARE



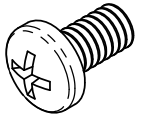
STEP 1: ATTACH DROP LEAF (X2)

To attach drop leaf (J), push screw (1F) through holes in part A & J. Slide 2 brackets (K) onto screws. Secure using 1G (x2). Tighten using screw driver and pliers.

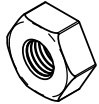
Repeat process for opposing side.



REQUIRED HARDWARE



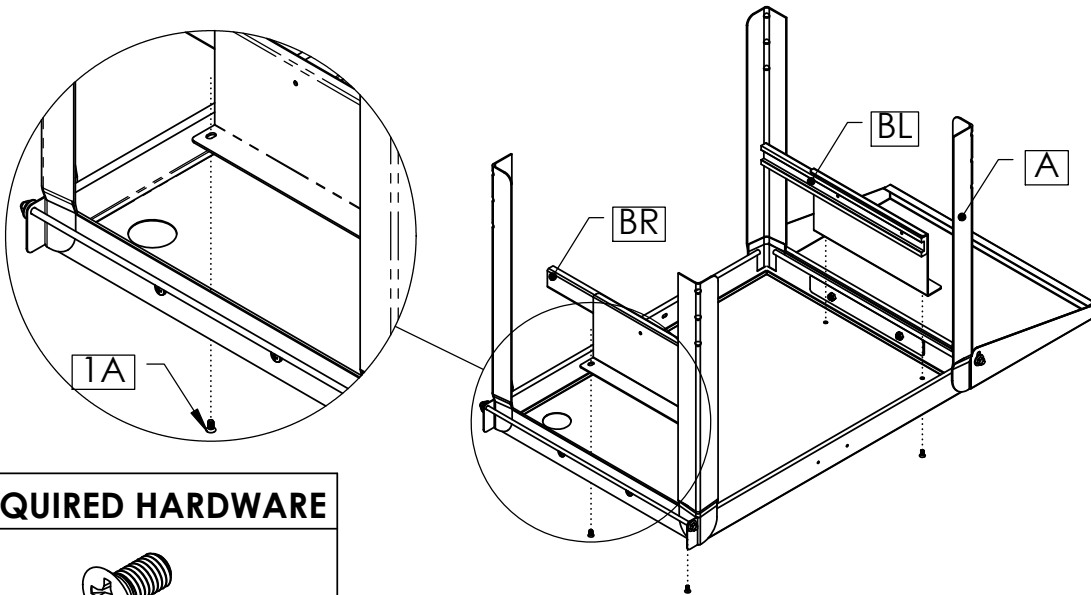
1F (X4)



1G (X4)

STEP 2: ATTACH KEYBOARD TRAY BRACKETS

Attach keyboard brackets (BL & BR) to upper cart assembly (A) using 1A (x4).



REQUIRED HARDWARE

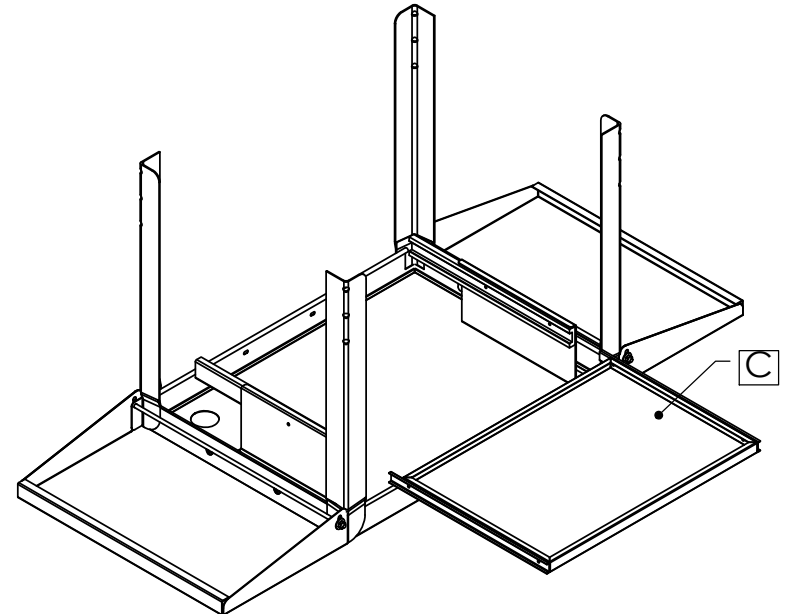


1A
QTY. 4

*Note- 1 Drop leaf hidden from view for clarity.

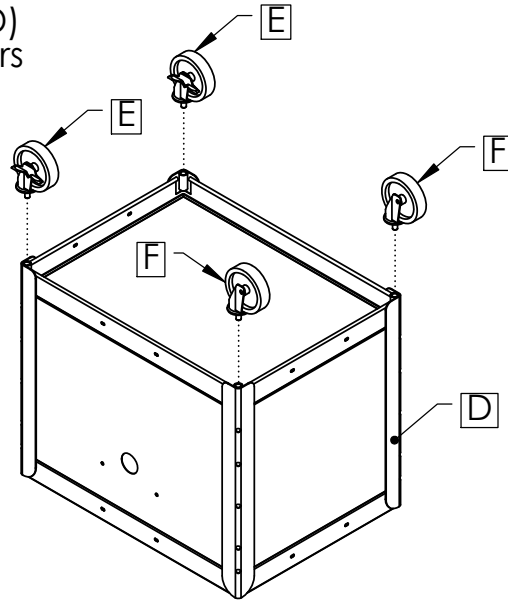
STEP 3: SLIDE KEYBOARD TRAY INTO BRACKETS

Slide Keyboard Tray (C) into Brackets



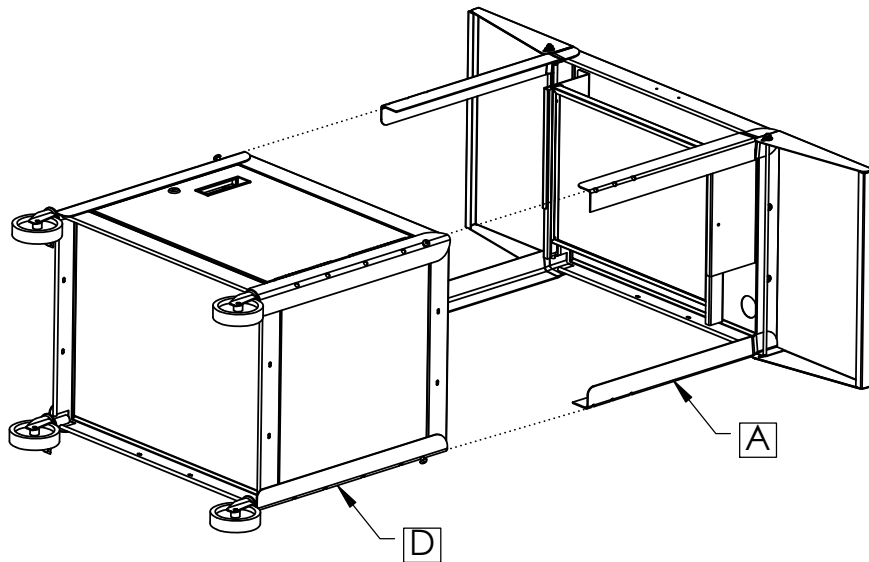
STEP 4: ATTACH CASTERS

Flip lower cart assembly (D) upside down. Install Casters (E/F) using rubber mallet.



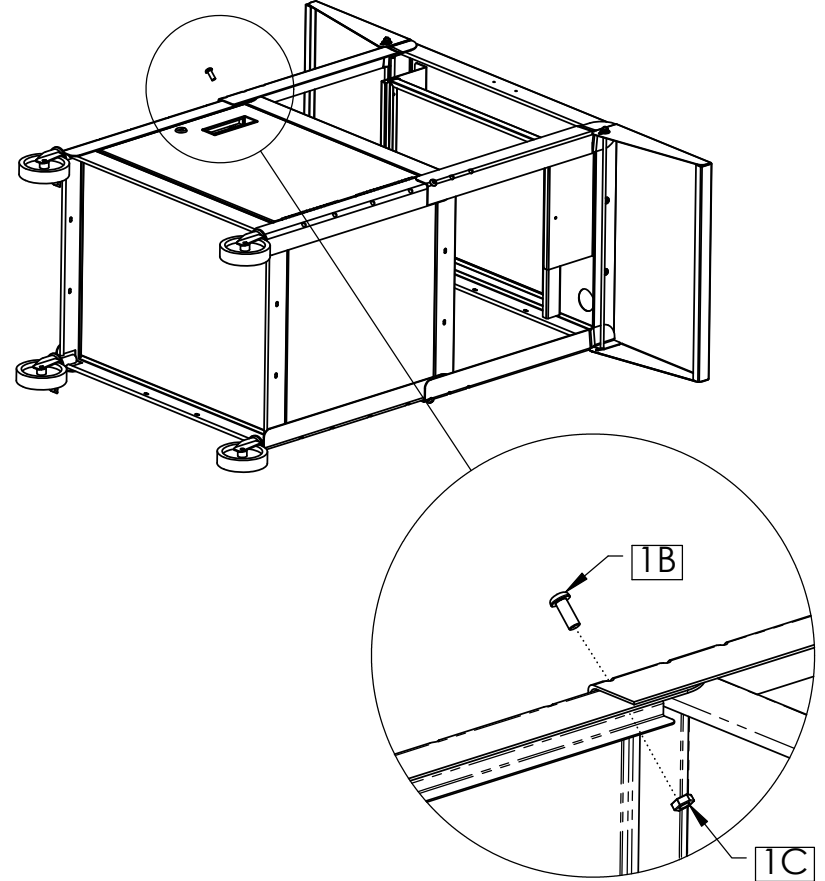
STEP 5: ALIGN CART COMPONENTS

Rest parts A&D on their side. Slide together until the holes on the legs are aligned at the desired height.



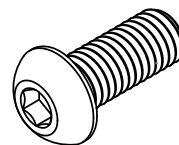
STEP 6: SECURE CART COMPONENTS

Secure parts A&D using 1B & 1C (x4)

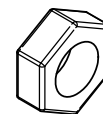


Note: Open door to secure 1C (x4)

REQUIRED HARDWARE



1B
QTY. 4



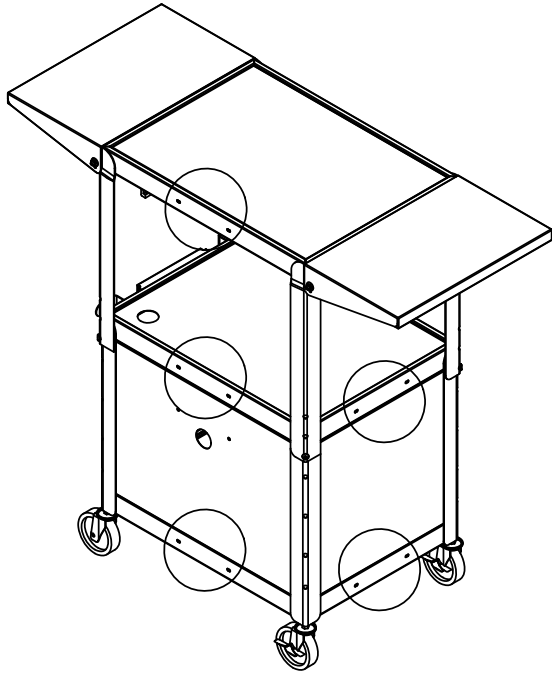
1C
QTY. 4

REQUIRED TOOLS



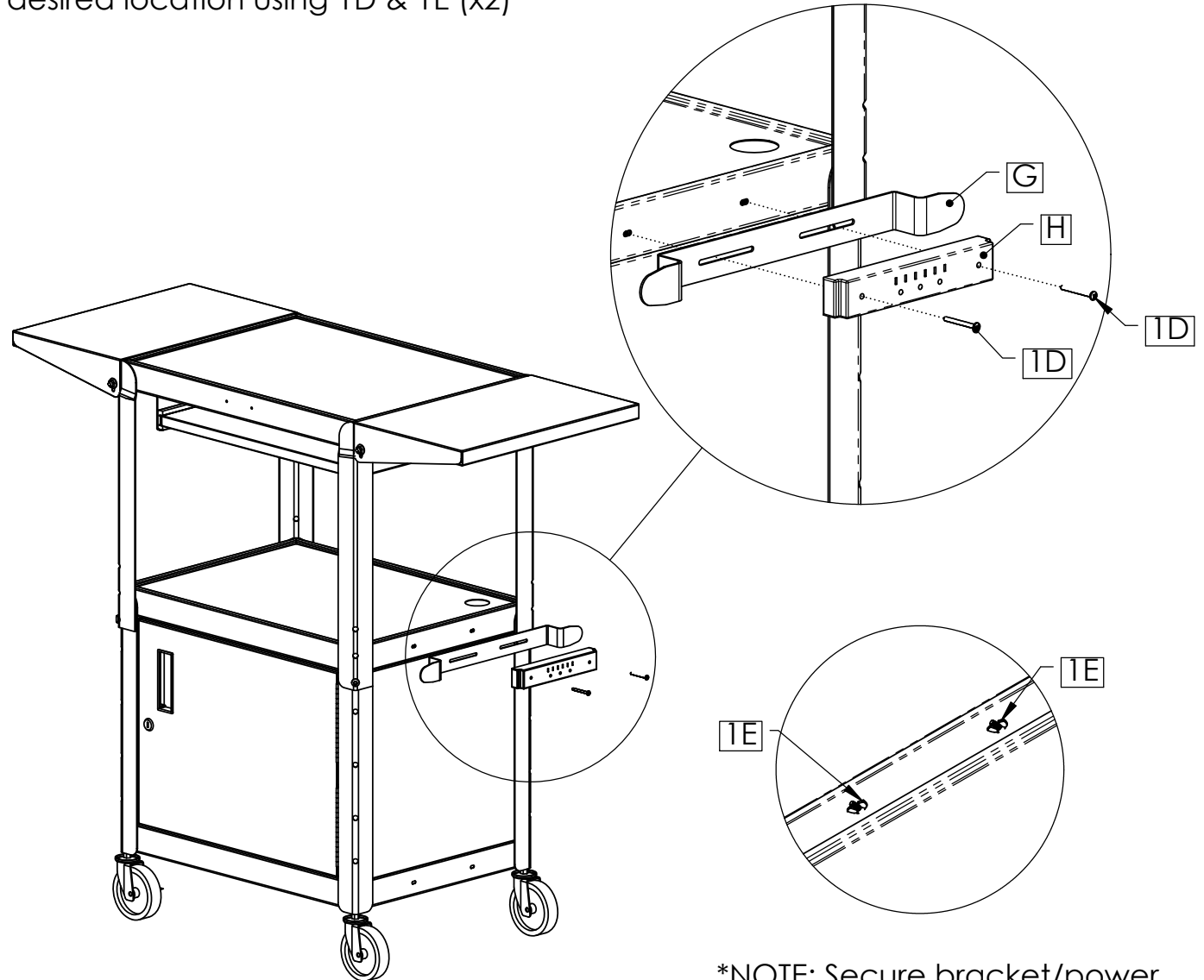
STEP 7: CHOOSE LOCATION

Power Strip can be installed in multiple places on the cart.



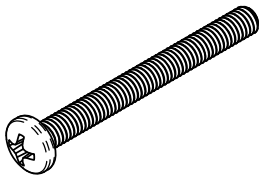
STEP 8: ATTACH POWER STRIP

Stand up Cart. Secure parts G&H in desired location using 1D & 1E (x2)



*NOTE: Secure bracket/power strip from inside cabinet using 1E (x2)

REQUIRED HARDWARE



1D
QTY. 2



1E
QTY. 2