



ASSEMBLY INSTRUCTIONS

ALL 6 SERIES FIRE PIT
SEAR TOPS

SAFETY & WARNINGS

This document outlines the usage guidelines, safety precautions, and essential information pertaining to the Sear Top accessory designed for use with the Fortus Flame Collapsible Smokeless Fire Pit. Adherence to these directives is crucial for safe and appropriate utilization.

The Sear Top accessory is exclusively designed as an additional component compatible with the Fortus Flame Collapsible Smokeless Fire Pit. It is meticulously crafted from ¼" thick American Steel, ensuring durability and suitability for food.

Constructed from resilient ¼" thick American Cold Rolled Steel, the Sear Top ensures durability, resistance to high temperatures, and compliance with food safety standards.

GUIDELINES FOR USE:

Upon opening your package, inspect the Fortus Flame Collapsible Smokeless Fire Pit Sear Top to identify any potential signs of damage that may have been caused during shipping. If you notice signs of damage, contact us immediately at support@fortusflame.com

DO NOT USE IF ANY IRREGULARITIES, DAMAGES, OR WEAKNESSES ARE OBSERVED AND CONTACT OUR DESIGNATED SUPPORT CHANNELS FOR GUIDANCE ON A RESOLUTION.

PREVENT SUFFOCATION RISKS BY KEEPING PLASTIC BAGS IN PACKAGING OUT OF REACH OF INFANTS AND CHILDREN. REFRAIN FROM USING THIS BAG IN CRIBS, BEDS, CARRIAGES, OR PLAYPENS. THIS BAG IS NOT INTENDED FOR PLAY.

The Sear Top accessory is intended solely for use in conjunction with the Fortus Flame Collapsible Smokeless Fire Pit. Verify proper alignment and fit before commencement of use.

IMPROPER OR NEGLIGENT USE OF THIS PRODUCT MAY LEAD TO POTENTIAL DAMAGE TO THE UNIT AND POSE RISK OF INJURY, HARM, OR DEATH TO INDIVIDUALS.

Position the Sear Top securely on the fire pit, ensuring a level and stable placement to prevent any unintended displacement during operation.

Preheat the Sear Top to the desired temperature prior to cooking to achieve optimal cooking conditions.

After use, allow the Sear Top to cool before cleaning. Employ suitable cleaning implements and refrain from using abrasive substances that may compromise the stainless steel surface.

SAFETY PRECAUTIONS:

Exercise caution during use, refraining from cooking over large open flames to prevent potential warping, classified as misuse.

Avoid rapid cooling methods, such as water, to expedite the cooling process, as this can cause warping and is considered misuse.

Avoid leaving the Sear Top unattended during operation, especially in the presence of children or pets.

Ensure the Fortus Flame Collapsible Smokeless Fire Pit rests on a stable, level surface before affixing the Sear Top to prevent any inadvertent instability.

Failure to comply with these outlined safety precautions and guidelines may result in hazards, including but not limited to injury, harm, or death to individuals or damage to property. Adherence to these directives is essential for the safe and proper utilization of the Sear Top accessory.

ASSEMBLY INSTRUCTIONS

All 6 Series Fire Pit Sear Tops



Fortus Flame was established in 2020 on a farm in America's Heartland by identical twin brothers, myself (Jordon) and my brother (Jerrod). It began as a metal sign shop and gradually evolved into a leading smokeless fire pit company. Growing up on a central Illinois farm instilled in us a strong work ethic, where hard work was ingrained in our upbringing.

Weekends spent outdoors were synonymous with bonfires shared with friends and family. However, as winter approached, storing the fire pit became an annual challenge. It occupied excessive garage space and was poorly made, lasting only a single season.

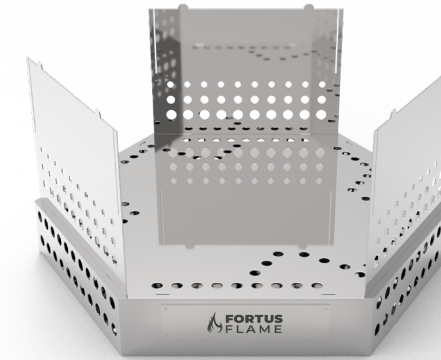
Frustrated by these recurring issues, my brother and I were determined to revolutionize the fire pit experience. Drawing upon our metalworking skills, we engineered a collapsible fire pit for convenient storage and travel. Furthermore, we innovated to make it smokeless.

Today, our fire pits offer a worry-free experience enjoyed by people worldwide. Bulky, substandard fire pits are a thing of the past as we continue to redefine outdoor enjoyment for all.

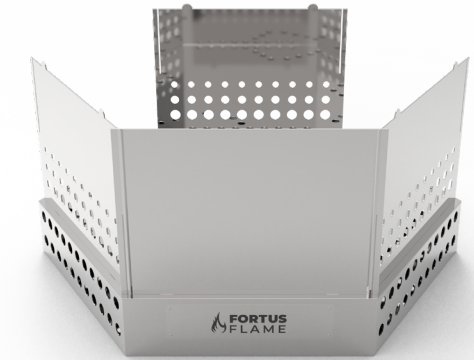


ASSEMBLY INSTRUCTIONS

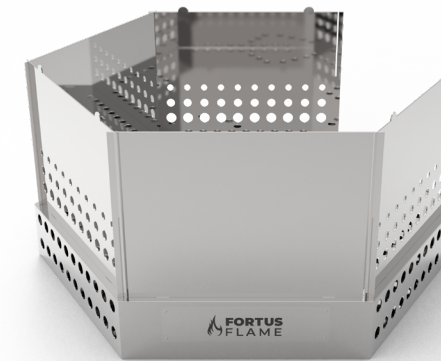
All 6 Series Fire Pit Sear Tops



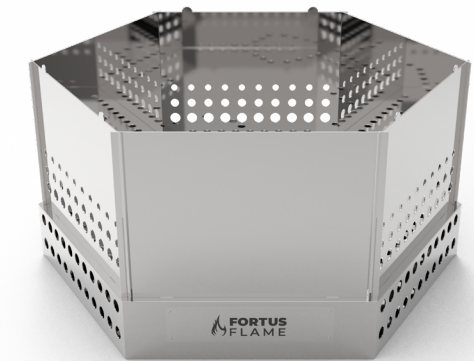
STEP 01



STEP 02



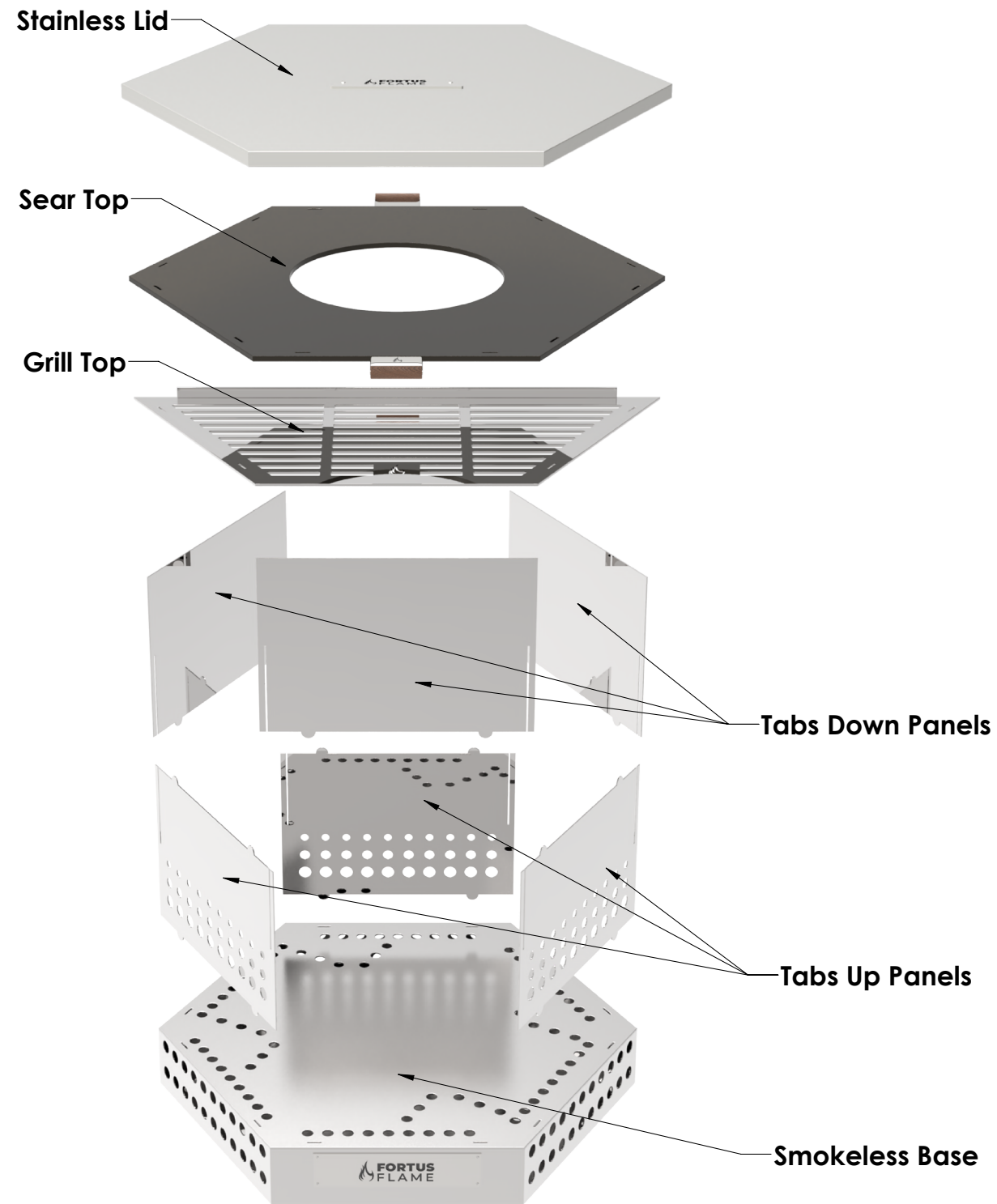
STEP 03



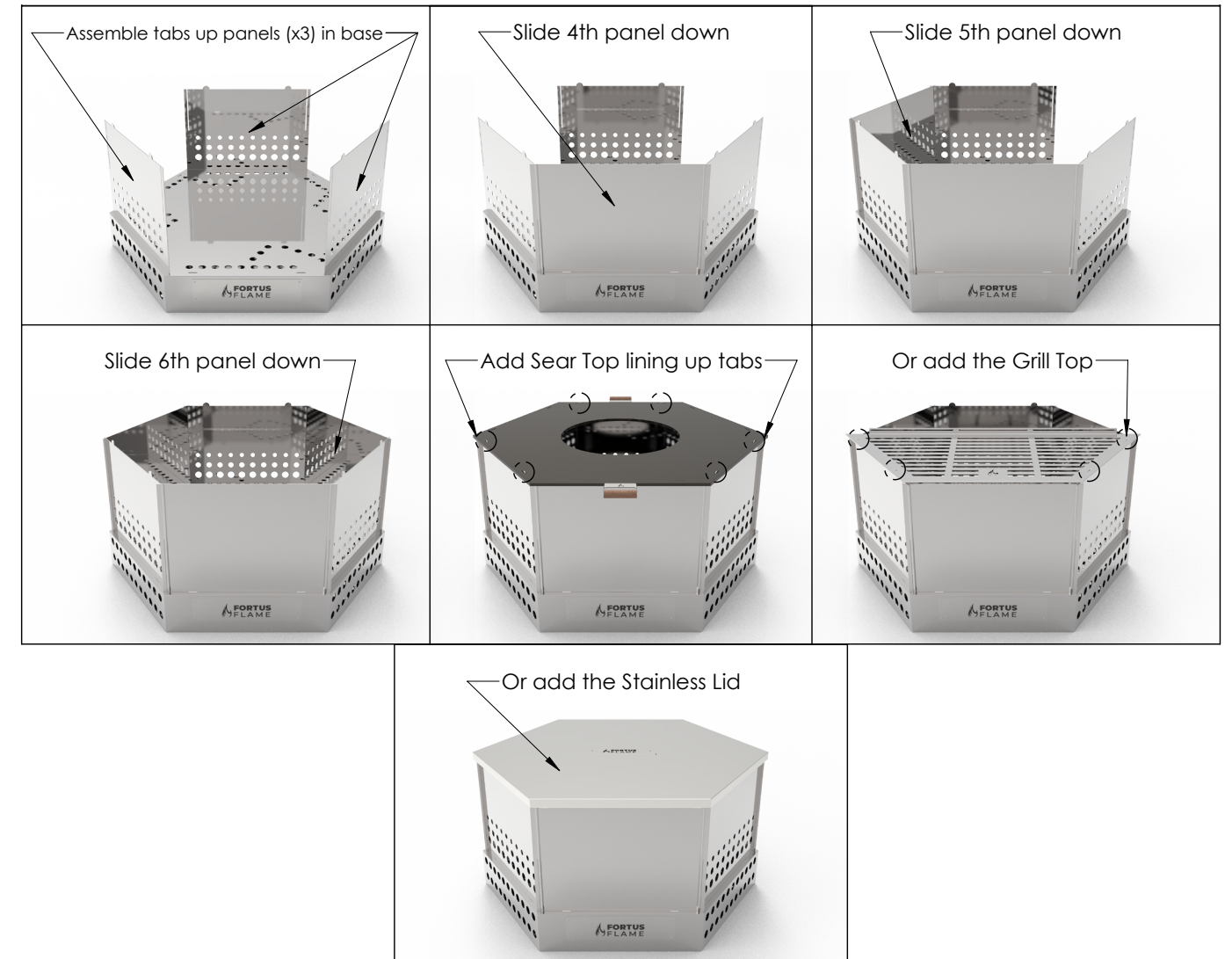
STEP 04



STEP 05



ASSEMBLY GUIDELINE





**FORTUS
FLAME**



fortusflame.com



facebook.com/FortusFlame



instagram.com/fortusflame