

Servicing the globe's leading  
Equine Dental Providers

Manufacturer and Supplier




Blades  
Hand Floats  
Lighting  
Speculums  
Head Stands  
Extraction Tools  
Wolf Tooth Elevators  
Periodontal Equipment  
Power Equipment & Burrs  
Hygiene / Cleaning Products

*PLUS Full Servicing of all Powered and Non Powered Equipment*

[www.theedgeequine.com](http://www.theedgeequine.com)

# Table of Contents



About Us .....	4
Blades .....	6
Floats .....	10
S Files .....	20
Speculums & Speculum Accessories .....	22
Powered Instruments .....	27
(Dynamic).....	28
(Jerry's) .....	30
(HDE) .....	31
(MAI) .....	35
Extraction Instruments .....	37
(Pegasos) .....	46
Examination & Periodontal Instruments .....	50
Lighting .....	54
Accessories .....	56
Head Stand & Dental Halters .....	58
Charting & Education .....	61
Hygiene & Cleaning Products .....	63
Distribution & Sales .....	66

# Introducing ... The Edge Equine Pty Ltd

---

## About Us

The Edge Equine is Australia's leading manufacturer and supplier of the finest quality equine dental equipment available in the world today. With our state-of-the-art workshop and expert manufacturing team, we strive towards excellence in bringing our customers the latest and greatest in equine dentistry equipment.



Established in 2001, we now enjoy a wonderful worldwide reputation with distributors in the UK / Europe, USA, New Zealand, and numerous end users in countries such as Japan, Malaysia, Indonesia, United Arab Emirates, South Africa, Singapore and many more.

We've attained this enviable position by remaining open and always available to our end users, thereby helping to develop and bring to life ideas and needs that can make this physically demanding job a little easier and a lot more efficient. A direct result of this has been our innovative range of disposable dental rasps and low-profile dental floats, the first of their kind available in the world.

Made from a solid tile of premium quality sub-micron tungsten carbide, our rasps are available in five unique rasp patterns, cut to absolute precision in our Australian workshop. Quality and superior workmanship are also reflected in our range of hand floats, elevators and speculums, all crafted from the highest quality stainless steel on the market today.

As part of our commitment to ongoing quality and customer satisfaction, we are continually investing in state-of-the-art machinery to bring our range of tools to the next level. Our workshop houses CNC Grinding Machines, Lathes, Mills, a Centrifugal Polishing Machine and more recently, a Fibre Laser Engraver. We strive to excel in our customer's expectations and the quality of the tools we manufacture here in our facility. Exciting and busy times here at The Edge Equine!

We're proud to admit that we're not only an Australian company, we're a net exporter of equine dental equipment around the world. We're also honoured to be associated with our global partners MAI Animal Health, HDE, and EBD who bring some of the world's best technologies in equine dental equipment to Australia through The Edge Equine.

For over 20 years now, we've introduced to the Australian veterinary market, new and exciting equipment previously not available in Australia. We're committed to paving the way towards the future as we continue to travel the world and have a proactive involvement in international veterinary conferences, training, and educational workshops.

Our product range is rapidly expanding with new products constantly being sourced and developed. We're continually updating our product catalogue and our website, endeavouring to keep you informed with what's new in the world of equine dentistry tools and equipment.

If you happen to be visiting our area, we invite you to drop in and see our showroom in Bendigo and view the full range of equine dentistry tools on hand.

Industry Leaders ... Service Excellence



For further information and to view our complete range, please visit our website [www.theedgeequine.com](http://www.theedgeequine.com) where we invite online orders.

## Useful Hints – Care of Floats & Blades

### General Care

Tungsten-carbide, when ground to a very fine point or edge, is highly susceptible to chipping if brought into abrupt contact with other hard surfaces such as the very hard enamel of horses' teeth. To minimise the risk of chipping these rasps, a fluent and measured motion should be employed during the floating process. Care should also be taken when storing or transporting rasps.

## Economy

The economy of using these rasps can be somewhat enhanced by rotating each rasp amongst other handles. Whilst it is advisable to use sharp, efficient rasps on the major portion of all molar arcades, a slightly used (or 'conditioned') rasp may be preferable when shaping the foremost side facets of the first upper and lower cheek teeth.

## Expediency and Efficiency

Using sharp, efficient tungsten-carbide rasps minimises the time and effort required to perform both routine and extraordinary dental procedures. This, in turn, will reduce the number of impatient or intolerant horses that would otherwise require sedation.

Also, considering the physical and highly repetitive nature of manual floating procedures, the use of sharp, efficient tungsten-carbide rasps lessens the risks to the practitioner of repetitive strain injury (RSI) or general muscle fatigue.

## Suggested Rotational System for Blades

The economy of these rasps can be greatly enhanced by rotating them between the various float handles used to float the teeth, rather than exhaust each blade in only one particular float handle.

Initially, a brand new rasp is best suited for floating the bulk of the molar arcades as the blade itself is drawn along the line of the teeth and is less likely to grab. It is also beneficial for the practitioner, as a new blade makes light work of this rather substantial part of the overall job.

Once the rasp begins to lose its 'bite' on the molar arcades, it usually still has plenty of life left in it for floating the foremost premolars. The float handle used for these purposes often has the blade housing offset at an angle, which means that the pressure being applied to the tooth is also directed from an angle.

It is suggested to first transfer the used (or 'conditioned') blade to the handle used to float the 2nd, 3rd and sometimes 4th premolars (or 1st, 2nd and 3rd cheek teeth). The slight angle of the blade housing tends to put the 'bite' back into the blade, due to the angle of the pressure being applied.

Again, as the rasp will eventually begin to lose its bite on these particular teeth, it is then suggested to transfer it to the float handle used to shape-up or contour a bit-seat on the front portion of the 2nd premolar. As this handle commonly has the blade housing angled more abruptly, the rasp will again regain much of its bite as the pressure is being applied at a greater angle.

Please note that a well-conditioned blade can also be transferred to the handle specifically designed for treating the last upper molar (6th cheek teeth). This molar, when sharp, is often the cause of lacerations to the cheek tissue, which can sometimes make the horse sensitive to the floating of this tooth. A well-used blade can sometimes be beneficial here as it can be used in a gentle 'sanding' motion (that is, short forwards and backwards movements) which many horses seem to tolerate much better. Being a well-used blade, the equal pressure being applied in the 'wrong' direction will not impact heavily on the lifespan of the blade as would be the case on a relatively newer rasp.

Of course, no one should lock into rotating their rasps in the exact manner described above. Based on personal techniques and preferences, a practitioner may find it more beneficial to adapt to their own rotation system.

The number of horses treated between each rotation of a blade depends on many variables (the horses' age, general condition of the teeth, etc). Through experimentation and experience, each practitioner will also determine their personal preferences for the timing of each rotation.

## The Edge Equine Blade Converter

To help give practitioners more flexibility to rotate and achieve even better economy from their dental blades, the team at The Edge Equine have developed a 'Blade Converter'. The Blade Converter allows for 'S Series' blades to be used with standard float handles. For more information on the Blade Converter, refer to the Blade section of this product catalogue.



# Blades for The Edge Equine Lightweight Floats

The Edge Equine range features a unique line of disposable float blades.

Other blade manufacturers make only one style of blade and make it more or less aggressive by cutting the teeth smaller or larger to give the effect of fine, medium or coarse. On our blades, however, the angle of the cut varies to make the blade more or less aggressive. The result is a blade that cuts predictably, cleanly, and smoothly from the first use right up until the last.

Our extensive range of blades are milled from premium quality tungsten-carbide and includes five cutting pattern grades, now available in three lengths and three styles within each grade. Designed with the horse's comfort in mind, these compact blades are ideally suited to handles with low-profile box housing.

Our blades do not require a backing plate making them lighter and thinner than traditional blades. In addition, they're disposable, making it easy to replace blunt blades and will ensure that your tools perform to the highest standard.

The Benefits of using The Edge Equine disposable blades:

- Avoids cost and time delays associated with the two-way mailing of regrinds
- Minimises the number of blades in your business (no more doubling-up of blades on hand and those away at the regrinder's)
- Avoids inconsistencies in the quality of your regrinds
- Lighter, low-profile blades – less fatigue and less stress for practitioner and patient!

## Please Note

The Edge Equine has the capability to manufacture blades suited for other float designs. Please contact our team to discuss your specific requirements.

The Edge Equine 'S Series' blades may be used in other makes of similarly designed floats provided special adhesive tape (provided with blade on request) is used and appropriate (and recommended) preparation of each blade is carried out prior to use. Recommended blade preparation can be obtained from our team. The Edge Equine does not accept responsibility for long-term adhesiveness of The Edge Equine 'S Series' blades when used in floats not manufactured by The Edge Equine.



THE EDGE EQUINE

---

# Our Disposable Range

## SUPER FINE

**SF Series** - Colour Coded **White**

A fine blade designed for a delicate touch when finishing off

## FINE

**PB Series** - Colour Coded **Yellow**

A fine / medium pattern for a uniform cut. Designed to slide easily over the teeth

## MEDIUM

**MU Series** - Colour Coded **Green**

A medium style rasp with a slightly more aggressive pattern (and biting) than our PB group of blades

## COARSE

**CS Series** - Colour Coded **Red**

A coarser style rasp with alternating rows of narrower and wider teeth

## EXTRA COARSE

**AG Series** - Colour Coded **Blue**

Our most aggressive style rasp with alternating rows of narrower and wider teeth.

S SERIES, 1.5" (40mm) (blades sold in boxes of 2)

\*\$59.77 per blade



S 1.5 SF



S 1.5 PB



S 1.5 MU



S 1.5 CS



S 1.5 AG

**Suitable for the following Floats:**

LMS 3540, SRS 6040

S SERIES, 2" (50mm) (blades sold in boxes of 2)

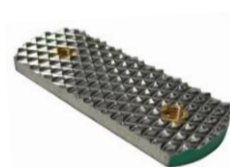
\*\$69.81 per blade



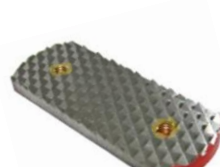
S 2 SF



S 2 PB



S 2 MU



S 2 CS



S 2 AG

**Suitable for the following Floats:**

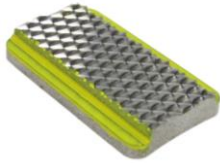
FMS 5050, LMS 3550, PMS 1050, PMS 2050, SRS 6050, SRS 7050

E SERIES, 40mm (1 1/2") (blades sold in boxes of 2)

\*\$69.47 per blade



SF 40



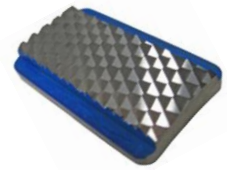
PB 40



MU 40



CS 40



AG 40

**Suitable for the following Floats:**

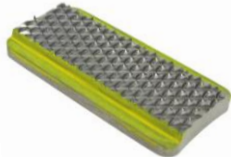
FM 5040, LM 2540, LM 3540, SR 6040, UL 1540, UM 3040

E SERIES, 50mm (2") (blades sold in boxes of 2)

\*\$80.45 per blade



SF 50



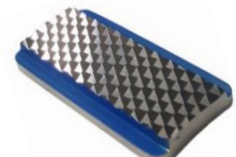
PB 50



MU 50



CS 50



AG 50

**Suitable for the following Floats:**

FM 5050, PM 1050, PM 2050, SR 7050, UL 1550, UM 3050 and all standard 50mm Floats

L SERIES, 83mm (3 1/4") (blades sold individually)

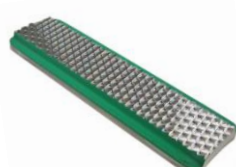
\$109.23 \*per blade



L 3.25 SF



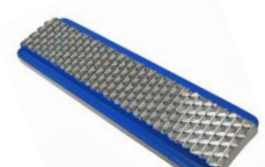
L 3.25 PB



L 3.25 MU



L 3.25 CS



L 3.25 AG

**Suitable for the following Floats:**

PM 2080, WB 1080, WB 6080 & all standard 3 1/4" floats

## The Edge Equine Blade Converter

Product Codes

BC S1.5 (40mm) \*\$32.65

BC S2.0 (50mm) \*\$33.70

### Reduce Cost and Save Money!



With the ever-increasing cost of quality Tungsten-Carbide used in the manufacture of equine dental blades, we're constantly pursuing new and innovative ways to reduce manufacturing costs for a more sustainable product minimising rising costs without compromising on quality.

We've developed an extensive range of hand floats and blades. Our range of 'S Series' blades have been specifically designed to partner the 'S Series' floats and are extremely popular since their initial development due to their cost-effectiveness and low profile / weight.

We've developed a new and innovative Blade Converter which enables our ever-popular 'S Series' blades to be used in either standard 50mm (2") or 40mm (1.5") float boxing.

#### Benefits

- **Same quality** Tungsten-Carbide
- **Lighter in weight** - less carbide required
- **More economical** - less material wastage during manufacturing
- **More flexibility** - rotate blades between 'S Series' & standard 'E Series' floats for extended use
- **One-off cost** for Blade Converter purchase



Slide Blade Converter & 'S Series' blade into float



Blade Converter with 'S Series' Blade

**CONSIDERABLE SAVINGS ...** Average customer's blade usage per year - 100

Average customer's savings per year - \$1,077

## Tungsten Gritted Blades

We stock a range of imported (USA) Tungsten gritted blades for standard manufactured dental floats and Tungsten 'S' Floats (see S Files section). Blades available in three sizes and grades.

#### Product Codes

##### FINE GRIT

**GF40** (40mm / 1½")  
**GF50** (50mm / 2")  
**GF83** (83mm / 3¼")

##### MEDIUM GRIT

**GM40** (40mm / 1½")  
**GM50** (50mm / 2")  
**GM83** (83mm / 3¼")

##### COARSE GRIT

**GC40** (40mm / 1½")  
**GC50** (50mm / 2")  
**GC83** (83mm / 3¼")



## Gritted Blades also available in our 'Slimline' design ...

Available in both 'Fine' and 'Medium' grit.

#### Product Codes

##### FINE GRIT

**TEE-S 1.5 GF** (40mm / 1½")  
**TEE-S 2 GF** (50mm / 2")

##### MEDIUM GRIT

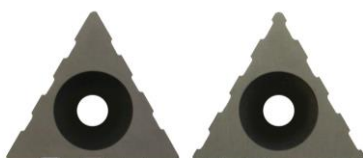
**TEE-S 1.5 GM** (40mm / 1½")  
**TEE-S 2 GM** (50mm / 2")



## Triangular Blades, 3 & 4 Groove Insert

Product Code CMI-01

\*\$18.26 each



Original Capps Triangular Blades to fit Capps Triangular Head floats



# The Edge Equine Lightweight Floats



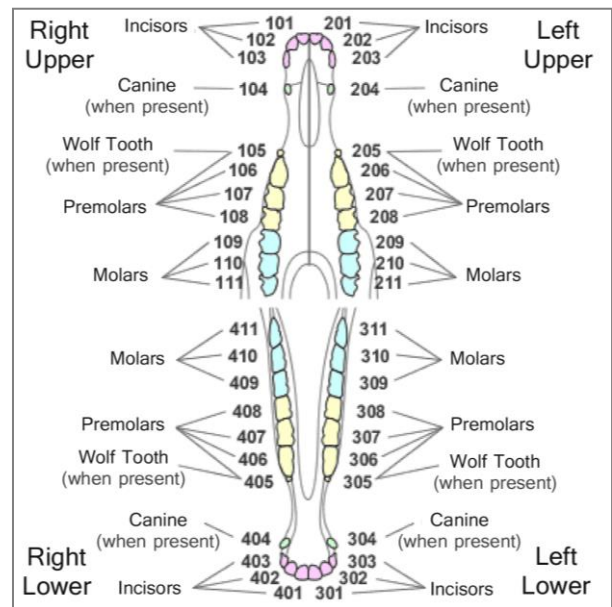
The Edge Equine dental floats are crafted from premium quality stainless steel. Boxing is low-profile and requires only one or two screws to secure the blade to the head of the float. Our standard grips are made of high quality, solid moulded plastic which are ergonomically shaped for user comfort.

**Please Note:** All float length measurements are from the top of the shaft to the end of the tool boxing. They **do not include** grip length.

All floats come with our standard grip however, we have several other options available. Please refer to the end of this section for further details. **When ordering a float with a particular grip, the Type and Product Code must be stated with the order otherwise a standard hand grip will be provided.** Please also note that **blades are not included** with floats and must be ordered separately.

Benefits of using The Edge Equine lightweight floats:

- Lighter in weight than traditional floats and blades
- Lower in profile than traditional floats
- Smaller blades for easier manoeuvrability
- Blades available in a range of sizes, shapes and grades (*refer to Blades section*)
- Floats available in 24 lengths and configurations
- Quality Australian made!



## PREMOLARS - Used to shape the 106, 206, 306, 406 (first Premolar)

SR 6040 (Version 1) (#26)

Product Code SR 6040-V1  
\*\$192.00



**Shaft Size:** 9.5mm (3/8") Solid Stainless Steel Rod

**Shaft Length:** 220mm (8 1/2")

**Head Angle:** -6°

**Boxing:** 40mm (1 1/2")

**Blade Type:** E Series 40mm (1 1/2")

SR 6040 (Version 2) (#5)

Product Code SR 6040-V2  
\*\$192.00



**Shaft Size:** 9.5mm (3/8") Solid Stainless Steel Rod

**Shaft Length:** 220mm (8 1/2")

**Head Angle:** -6°

**Boxing:** 40mm (1 1/2")

**Blade Type:** E Series 40mm (1 1/2")

SR 7050 (#6)

Product Code SR 7050  
\*\$192.00



**Shaft Size:** 9.5mm (3/8") Solid Stainless Steel Rod  
**Shaft Length:** 255mm (10")  
**Head Angle:** -6°



**Boxing:** 50mm (2")  
**Blade Type:** E Series 50mm (2")

SRS 6040 (#18)

Product Code SRS 6040  
\*\$192.00



**Shaft Size:** 9.5mm (3/8") Solid Stainless Steel Rod  
**Shaft Length:** 220mm (8 1/2")  
**Head Angle:** -6°



**Boxing:** 40mm (1 1/2")  
**Blade Type:** S Series 40mm (1 1/2")

SRS 6050 (#19)

Product Code SRS 6050  
\*\$192.00



**Shaft Size:** 9.5mm (3/8") Solid Stainless Steel Rod  
**Shaft Length:** 230mm (9")  
**Head Angle:** -6°



**Boxing:** 50mm (2")  
**Blade Type:** S Series 50mm (2")

SRS 7050 (#20)

Product Code SRS 7050  
\*\$192.00



**Shaft Size:** 9.5mm (3/8") Solid Stainless Steel Rod  
**Shaft Length:** 260mm (10")  
**Head Angle:** -6°



**Boxing:** 50mm (2")  
**Blade Type:** S Series 50mm (2")

UM 3040 (#1)

Product Code UM 3040

\*\$192.00



**Shaft Size:** 12.5mm (½") Stainless Tubing

**Shaft Length:** 195mm (7 ½")

**Head Angle:** -27°

**Boxing:** 40mm (1 ½")

**Blade Type:** E Series 40mm (1 ½")

UM 3050 (#2)

Product Code UM 3050

\*\$192.00



**Shaft Size:** 12.5mm (½") Stainless Tubing

**Shaft Length:** 205mm (8")

**Head Angle:** -27°

**Boxing:** 50mm (2")

**Blade Type:** E Series 50mm (2")

## PREMOLARS - Upper 06s, 07s, 08s & Lower 306, 406 (upper and lower Premolars)

PM 1050 (#7)

Product Code PM 1050

\*\$192.00



**Shaft Size:** 12.5mm (½") Stainless Tubing

**Shaft Length:** 280mm (11")

**Head Angle:** -18°

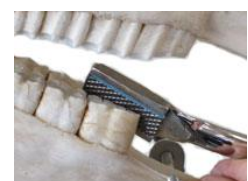
**Boxing:** 50mm (2")

**Blade Type:** E Series 50mm (2")

PM 2050 (#3)

Product Code PM 2050

\*\$192.00



**Shaft Size:** 16mm (5/8") Stainless Tube

**Shaft Length:** 240mm (9 ½")

**Head Angle:** -18°

**Boxing:** 50mm (2")

**Blade Type:** E Series 50mm (2")

PM 2080 (#4)

Product Code PM 2080  
\*\$192.00



**Shaft Size:** 16mm (5/8") Stainless Tube

**Shaft Length:** 260mm (10")

**Head Angle:** -18°

**Boxing:** 83mm (3 1/4")

**Blade Type:** L Series 83mm (3 1/4")

PMS 1050 (#16)

Product Code PMS 1050  
\*\$192.00



**Shaft Size:** 9.5mm (3/8") Solid Stainless Steel Rod

**Shaft Length:** 270mm (10 1/2")

**Head Angle:** -18°

**Boxing:** 50mm (2")

**Blade Type:** S Series 50mm (2")

PMS 2050 (#17)

Product Code PMS 2050  
\*\$192.00



**Shaft Size:** 9.5mm (3/8") Solid Stainless Steel Rod

**Shaft Length:** 240mm (9 1/2")

**Head Angle:** -18°

**Boxing:** 50mm (2")

**Blade Type:** S Series 50mm (2")

WB 1080 (#23)

Product Code WB 1080  
\*\$192.00



**Shaft Size:** 20x5mm (.78x.19") Flat Stainless Steel

**Shaft Length:** 275mm (10 1/2")

**Head Angle:** -15°

**Boxing:** 83mm (3 1/4")

**Blade Type:** L Series 83mm (3 1/4")

WB 6080 (#24)

Product Code WB 6080  
\*\$192.00



**Shaft Size:** 20x5mm (.78x.19") Flat Stainless Steel

**Shaft Length:** 360mm (14")

**Head Angle:** -15°

**Boxing:** 83mm (3 1/4")

**Blade Type:** L Series 83mm (3 1/4")

## REAR MOLARS - for 111 & 211

LM 2540 (#12)

Product Code LM 2540  
\*\$192.00



**Shaft Size:** 12.5mm (1/2") Stainless Steel Tubing

**Shaft Length:** 390mm (15")

**Head Angle:** +6°

**Boxing:** 40mm (1 1/2")

**Blade Type:** E Series 40mm (1 1/2")

LM 3540 (#13)

Product Code LM 3540  
\*\$192.00



**Shaft Size:** 9.5mm (3/8") Solid Stainless Steel Rod

**Shaft Length:** 390mm (15")

**Head Angle:** +6°

**Boxing:** 40mm (1 1/2")

**Blade Type:** E Series 40mm (1 1/2")

LMS 3540 (#15)

Product Code LMS 3540  
\*\$192.00



**Shaft Size:** 9.5mm (3/8") Solid Stainless Steel Rod

**Shaft Length:** 390mm (15")

**Head Angle:** +6°

**Boxing:** 40mm (1 1/2")

**Blade Type:** S Series 40mm (1 1/2")

LMS 3550 (#61)

Product Code LMS 3550  
\*\$192.00



**Shaft Size:** 9.5mm (3/8") Solid Stainless Steel Rod

**Shaft Length:** 390mm (15")

**Head Angle:** +6°

**Boxing:** 50mm (2")

**Blade Type:** S Series 50mm (2")

## UPPER / LOWER DENTAL ARCADE - for 6s to 11s on Upper and Lower Arcades

FM 5040 (#10)

Product Code FM 5040  
\*\$192.00



**Shaft Size:** 12.5mm (1/2") Stainless Steel Tubing

**Shaft Length:** 390mm (15")

**Head Angle:** +2°

**Boxing:** 40mm (1 1/2")

**Blade Type:** E Series 40mm (1 1/2")

FM 5050 (#11)

Product Code FM 5050  
\*\$192.00



**Shaft Size:** 12.5mm (1/2") Stainless Steel Tubing

**Shaft Length:** 390mm (15")

**Head Angle:** +2°

**Boxing:** 50mm (2")

**Blade Type:** E Series 50mm (2")

FMS 5050 (#14)

Product Code FMS 5050  
\*\$192.00



**Shaft Size:** 9.5mm (3/8") Solid Stainless Steel Rod

**Shaft Length:** 390mm (15")

**Head Angle:** +2°

**Boxing:** 50mm (2")

**Blade Type:** S Series 50mm (2")

UL 1540 (#8)

Product Code UL 1540  
\*\$192.00



**Shaft Size:** 16mm ( $\frac{5}{8}$ " ) Stainless Steel Tubing

**Shaft Length:** 390mm (15")

**Head Angle:** +2°

**Boxing:** 40mm (1  $\frac{1}{2}$ " )

**Blade Type:** E Series 40mm (1  $\frac{1}{2}$ " )

UL 1550 (#9)

Product Code UL 1550  
\*\$192.00



**Shaft Size:** 16mm ( $\frac{5}{8}$ " ) Stainless Steel Tubing

**Shaft Length:** 390mm (15")

**Head Angle:** +2°

**Boxing:** 50mm (2")

**Blade Type:** E Series 50mm (2")

UL 1580 (#25)

Product Code UL 1580  
\*\$192.00



**Shaft Size:** 16mm ( $\frac{5}{8}$ " ) Stainless Steel Tubing

**Shaft Length:** 390mm (15")

**Head Angle:** +2°

**Boxing:** 83mm (3  $\frac{1}{4}$ " )

**Blade Type:** L Series 83mm (3  $\frac{1}{4}$ " )

## INCISOR FLOATS - Incisors

IN 2080 (#39)

Product Code IN 2080  
\*\$192.00



**Shaft Size:** 12.5mm ( $\frac{1}{2}$ " ) Stainless Steel Tubing

**Shaft Length:** 160mm (6  $\frac{1}{4}$ " )

**Head Angle:** 0°

**Boxing:** 83mm (3  $\frac{1}{4}$ " )

**Blade Type:** L Series 83mm (3  $\frac{1}{4}$ " )

INS 0150 (#44)

Product Code INS 0150  
\*\$192.00



**Shaft Size:** 9.53mm Solid Shaft  
**Shaft Length:** 105mm (4")  
**Head Angle:** +40°



**Boxing:** 50.8mm (2")  
**Blade Type:** S Series 50mm (2")

INS 0250 (#43)

Product Code INS 0250  
\*\$192.00



**Shaft Size:** 9.53mm Solid Shaft  
**Shaft Length:** 105mm (4")  
**Head Angle:** -40°



**Boxing:** 50.8mm (2")  
**Blade Type:** S Series 50mm (2")

INS2\_FLAT (#45)

Product Code INS2\_FLAT  
\*\$192.00



**Shaft Size:** 9.5mm (3/8") Solid Stainless Steel Rod  
**Shaft Length:** 110mm (4.3")  
**Head Angle:** 0°



**Boxing:** 50mm (2")  
**Blade Type:** 'S Series' 50mm (2")

## FINISH - for finishing off Upper & Lower Dental Arcades

Gledhill Convex (Diamond Coated Float) (#28)

Product Code GHCNV  
\*\$245.50



**Shaft Size:** 9.5mm (3/8") Solid Stainless Steel Rod  
**Shaft Length:** 410mm (16")  
**Head Angle:** nil°



**Boxing:** NA  
**Blade Type:** No blades required



## Gledhill Concave (Diamond Coated Float) (#27)

Product Code GHCNC  
\*245.50



**Shaft Size:** 9.5mm (3/8") Solid Stainless Steel Rod  
**Shaft Length:** 410mm (16")  
**Head Angle:** nil°

**Boxing:** NA  
**Blade Type:** No blades required

## Hand Float Kit

### The Edge Equine Slimline (S Series) Hand Float Kit

Product Code STARTPACKB  
\*\$895.00

#### The perfect Hand Float Kit for anyone working in the field of equine dentistry!



This kit features our range of **Slimline Series** hand tools and rasps and contains:

- 1 x **Roll Up Carry Bag**
- 1 x **LMS 3540** hand float with **S 1.5 PB** blade (for Upper 11s)
- 1 x **FMS 5050** hand float with **S 2 AG** blade (for bottom molar arcades)
- 1 x **PMS 1050** hand float with **S 2 MU** blade (for Upper 6, 7 & 8s)
- 1 x **SRS 6040** hand float with **S 1.5 SF** blade (for shaping bit seat – upper and lower 6s)

Options Available:

- Kit comes fitted with Standard hand grips. Grips other than Standard will incur an extra cost.
- Hand Float Kit available in standard 'E Series'.



## Floating Accessories ...

### 'S Series' Screws & Allen Keys

Product Code TEE-SAS  
\*\$2.00

- Replacement Slimline 'S Series' sized Screws and Allen Key set
- Comes with 1 x Allen Key and 2 x Screws



### 'S Series' Screws

Product Code TEE-SCRS  
\*\$0.50

- Replacement Screws (individually priced)
- To fit Slimline 'S Series' hand floats
- Flat Head



### Standard Screws & Allen Keys

Product Code TEE-SAE  
\*\$2.00

- Replacement Standard 'E Series' sized Screws and Allen Key set
- Set includes: 1 x Allen Key and 2 x Screws



### Standard Screws

Product Code TEE-SCRE  
\*\$0.50

- Replacement Screws for Standard 'E Series' hand floats (individually priced)



## Hand Grip Options ...

All dental floats manufactured at The Edge Equine are fitted with our standard hand grips, however we have several other handle options available which **must be requested at time of ordering**.

Please note - alterations to existing floats may affect the integrity of the tool's serviceability and therefore may void the manufacturer's warranty.

**Please consult with us on suitability when ordering floats requiring optional handle grips.**

### STANDARD GRIP

140mm long x 30mm wide

\*Price \$8.75 (replacement)

**Product Code HAN-STANDARD**



### OPTIONAL GRIPS

#### 'Trigger'

Used on the pull. Helps alleviate fatigue by reducing tension on the wrist and using leverage from trigger finger.  
157 x 30mm  
*\*suitable only for 9.53mm (3/8") shaft*

\*Price \$34.80

**Product Code HAN-SPT**



#### 'BK'

Outer rubber grip can be customised as required. Comfortable, non-slip grip. Practical for all tools.  
140 x 35mm

\*Price \$30.85

**Product Code HAN-BK**



#### 'SA'

Lightweight yet solid grip with grooves. 130 x 40mm

\*Price \$27.00

**Product Code HAN-SA**



#### 'PL'

Similar to the SA grip but 20mm longer.  
150 x 40mm

\*Price \$27.00

**Product Code HAN-PL**



#### 'Ergo'

Ergonomically designed rubber coated grip *\*suitable only for 9.53mm (3/8") shaft*.  
130 x 28mm (narrowest point)

\*Price \$32.00

**Product Code HAN-ERGO**



#### 'DU'

Good sturdy hand grip. Fine knurling to maximise grip.  
130 x 35mm (narrowest point)

\*Price \$39.00

**Product Code HAN-DU**



#### 'Pistol'

Sturdy, simple and comfortable to use.  
120 x 32mm

\*Price \$29.45

**Product Code HAN-PG**



#### 'Rubber'

Tapered, soft grip, non-slip, and easy to clean.  
115 x 35mm

\*Price \$25.00

**Product Code HAN-ALB**



Did you know we can custom make hand floats to your exact specifications?  
For more information, contact our friendly sales team. We welcome the opportunity to work with you for all your equine dental needs.

# 'S' Files

## Split Blue Diamond Combo

Product Code SF-COMBO  
\*519.75

The Diamond Combo is the ultimate finishing float. With the durability of diamonds on stainless steel, what more could you ask for? This float is just what you need if you are addressing bit seats, putting a radius on the canines or just putting the finishing touches on a completed mouth. The diamond is not aggressive with soft tissue but can polish a surface to smooth perfection. This tissue friendly float is the perfect float to take your finished mouth to the next level.

A process called, "**SPLIT BLUE DIAMOND**" has been developed by Olsen E-Z Cuts, INC. and a diamond plating engineering firm. This new process has superseded all other diamond coating techniques. The diamond particles actually split and fracture when it begins to fatigue thus giving you another sharp surface to continue. Manufactured in the United States and assuring a superior product!

**Overall Length:** 30.5cm (12")



## Diamond S File, 12" x 3/4"

Product Codes TEE-SF01-DSFINE \*298.55  
TEE-SF01-DSMED \*346.48

## Diamond S File, 7"

Product Code PED-001 \*\$49.30



- Available in FINE and MEDIUM
- Perfect for finishing off
- Double sided diamond S File
- 12" x 3/4" (30.5 x 1.9cm)

Made in Australia by  
The Edge Equine



- Diamond Grit
- Fine (36 x 50 grit)
- Double Sided
- Length: 2cm x 17.8cm (.8" x 7")



## Diamond Canine Files

Product Codes PED-010 (red handle) \*\$18.00  
PED-011 (black handle) \*\$41.70

Medium (36 Grit)  
Size: 21.6cm x 2.5cm (1" x 8.5")



- Super Fine (120 Grit)
- Size: 21.6cm x 1.3cm (8.5" x 1/2")



Product Codes SF05-DS \*\$138.60

## Tungsten Gritted S Floats

SF03-DS \*\$155.05

SF02-SS \*\$116.08

The Edge Equine stock a great range of imported Tungsten Gritted S Files.

### Product Codes

**SF05-DS** 'S File 30cm x 1.9cm (12"x 3/4")  
double sided, medium gritted

**SF03-DS** 'S File 30cm x 2.5cm (12"x 1")  
double sided, medium gritted

**SF02-SS** 'S File 30cm x 2.5cm (12"x 1")  
single sided, medium gritted,



# Speculums and Speculum Accessories

We manufacture the highest quality stainless steel speculum with five ratchet settings. Standard mouth plates can easily be removed and interchanged with other types. The Edge Equine Speculum ratchets are not cast, but laser cut from 2205 stainless steel plate, giving you a stronger and safer ratchet system.

Speculum 'The Edge Equine's Big Kev'

Product Code TEE-MG8041\_V2BK

\*\$1,567.65



Impeccable craftsmanship and quality materials guarantee another superior product very proudly made by The Edge Equine.

Now even stronger than ever, The Edge Equine's NEW Speculum (which we've aptly named Big Kev) is made from highest quality stainless steels. Machined using the latest technologies in CNC Milling, our speculum is second to none on the world market!

Features:

Adjustable ratchets with five settings

Comes with optional Chin (Lead) Strap

High polish finish

Superior Biothane® straps (strong, lightweight, flexible, easy-to-clean and abrasion resistant)

Standard mouth plates which can be easily removed and interchanged with either parrot-mouth extension plate, gum plate or wide mouth plates (optional accessories)

Materials used are 316 stainless steel, mouth plates - 420 stainless steel, ratchets - 2205 duplex stainless steel, genuine Biothane® strapping



Made in Australia by The Edge Equine



## Biothane Straps Replacement Set

Product Code TEE-MG8009  
\*\$221.69



- Strong, lightweight, flexible, easy to clean and abrasion-resistant
- Quality brass fittings
- Simple to fit

Made in Australia by The Edge Equine



## Spring Set

Product Code TEE-MG8041SS  
\*\$28.10

## The Edge Equine Speculum Replacement Kits

**Service Kit**  
Product Code TEE-MG8041SK V2  
\*\$168.53

Keep a spare Service Kit and Spring Set in your kit for emergencies!



Spring Sets recommended for both  
The Edge Equine 'Big Kev' and  
The Edge Equine original Speculums.

Service Kits available for both. Please specify which  
speculum you have when ordering your Service Kit.



Made in Australia by The Edge Equine



## Standard Mouth Plates 'Big Kev' (per pair)

Product Code TEE-MG8060 V2  
(Pair) \*\$221.90

## Parrot-Mouth Extension Plate

Product Code TEE-MG8081  
(Single) \*\$51.30

- Magnetic (perfect for use with lighting)
- Quality stainless steel
- Overall width: 15cms (5.9")



Made in Australia by The Edge Equine



This one-piece stainless steel extension plate will safely support the upper incisors of parrot-mouthed horses



Made in Australia by The Edge Equine



## Rubber Gum Plates

Product Codes  
TEE-MG8083 (Single) \*\$67.30  
(Pair) \*\$114.40

## Wide Mouth Plates (per pair)

Product Code  
TEE-MG8082 V2  
\*\$236.00

- An optional accessory to the speculum.
- Features fully moulded Polyurethane Elastomer. Designed for ultimate comfort of the patient and will safely support the upper incisors of aged horses and those with recent injuries to the incisors



Made in Australia by The Edge Equine



- New Design!
- Perfect for a little extra room when using power equipment.
- Overall width: 18.5cms (7.3")



Made in Australia by The Edge Equine



## Pony Speculum

Product Code WM-1006  
\*\$350.00



- High quality fittings
- Biothane™ straps
- High shine finish



## Incisor Gag 'The Edge Equine'

Product Code TEE-MG6001  
\*\$47.55

Tubular speculum for carrying out incisor work. Fits most horses and ponies' mouths.

Made in Australia by The Edge Equine 



## Alumispec™

Product Code VDP-0130150  
\*3115.99

## XSpec™

Product Code VDP-53605  
\*3,482.00



Extremely lightweight yet able to stand up to extreme bending forces

Synthetic fabric strap allows the cinch-lock mechanism to open to infinite adjustments

Durable strapping system is easy to clean and pliable in all temperatures

Large plate area allows more retention of the incisors

Wide design allows x-ray plates to seat next to the head to take hands-free x-rays

Aluminium construction allows x-rays to be taken through the speculum without distortion

New magnetic plates available for mouth lights

Next generation equine speculum, an enhancement of the original AlumiSpec™

Wider design provides more space between the horse's cheek and speculum to accommodate digital radiography plates for obtaining dental films in a variety of positions

Constructed of aircraft grade aluminium, CNC milled precision pieces, TIG welded with a durable powder coat finish

Suitable for all sized horses

Tested on hundreds of patients in an equine dental practice

Net weight, 2.5kgs (5.5 pounds)

Opening Latch Strap  
(replacement)  
AlumiSpec™

Product Code  
VDP-0130150-2  
\*\$47.71

Cam Buckle for Opening  
Strap (replacement)  
AlumiSpec™

Product Code  
VDP-0130150-3  
\*\$106.35



Gunther Speculum

Product Code WM-0094  
\*\$510.00



Used to offset the jaw for surgery and special procedures. Features 9 offset positions and rubber lined plates. The Gunther Speculum is also ideal for the minimally invasive Buccotomy procedure.



EZ Spec

Product Codes JED-EZS01 (Powder Coated) \*\$3400.45  
JED-EZS02 (Non-Powder Coated) \*\$3249.30

The EZ Spec is made of lightweight, durable, aircraft-grade aluminium. Even though it weighs less than 3 kgs, this speculum is strong enough to stand up to any job. It features a non-slip cam buckle for easy and unlimited adjustments. A safety lock feature has also been added to ensure your safety no matter how strong the horse. Great for x-rays!

\*\* Available with Powder Coating for extra durability and easy clean-up.

\*\* Mini EZ Spec also available – Great for ponies and minis!



Harlton's Mouth Wedge

Product Code VDP-0130310  
\*\$310.50

This unique design allows several teeth to rest on it at one time. This prevents slipping and spreads the force across several teeth to reduce the danger of cracking. The wedge portion is covered with a thick piece of polyurethane making it more comfortable for the horse. The polyurethane is durable and well accepted by horses.

Mouthpiece length is 8.25cm (3¼") and 3.8cm (1½") wide. The height (at the widest part) is 5.1cm (2") and the handle length is 21.6cm (8½"). See below for details on the Harlton's Mouth Wedge Replacement Kit.





## Harlton's Mouth Wedge Replacement Kit

Product Code VDP-0130330  
\*\$52.00

This polyurethane replacement kit for the Harlton's Mouth Wedge contains two polyurethane pads, eight screws and an allen key.

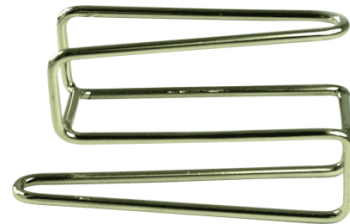


## Cheek Retractor

Product Code WM-1027  
\*\$59.00

Stainless steel spreader gently pulls cheeks away from cheek teeth so that occlusion can be evaluated on a closed mouth. Also provides more room when using power dentistry equipment.

Has two built-in different sized retractors to easily alternate between large or small miniature horses.



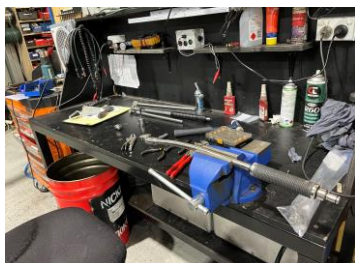
# Service, Repairs & Custom Manufacturing

Here in our modern workshop / manufacturing facility, we take pride in the fact that our highly trained technicians have the knowledge and capacity to take care of all brands and types of powered equine dental equipment. We stock a large supply of spare parts from around the world, so we're able to provide you with a quick turnaround when servicing or repairing your tools, helping to minimise your 'downtime'.



Our manufacturing facility boasts the latest CNC machining technologies, used to produce our equine dental instruments, a centrifuge polishing system which ensures a flawless finish to our stainless steel and aluminium products, and also hosts a range of other machines both CNC and manual to guarantee our unique range of products are manufactured to the highest standards.

Our latest workshop addition - a fibre laser engraver!



As a valued customer, you can rest assured that we're committed to continuing to update and modernise our workshop and service facilities and to train our team in the latest manufacturing methods and your service and maintenance requirements.

*Australian Company - Australian Made  
Australian Jobs*



# Powered Instruments

Extensive range of world class power equipment from leading manufacturers.

**NOTE:** All servicing and repairs for power equipment is carried out in The Edge Equine workshop.

## Dynamic & Ecomak Range

### Dynamic Disc Kit

Product Code EBD-KIT\_3  
\*POA



The **Dynamic System** has been developed to allow the practitioner to do as much or as little as they want in terms of repair and servicing.

The Dynamic handpieces have been designed to be lightweight whilst providing longer lasting heads between servicing.

Dynamic adjustable torque motor new & improved

Cross / Key / Square / Slot Drive Cable options.

Compatible with other power systems.



DYNAMIC DISC KIT ... Includes Belt, Braces, Holster, Dynamic Motor, 1.2m Drive Cable, Curved Long Dynamic Disc Handpiece, Makita Battery Charger, 40v Makita Battery, Disc Removal Kit, Grease Gun & Food Grade Grease, Black Heavy Duty Trolley Case, Disposable Mask, Safety Glasses

### Ecomak Disc Kit

Product Code EBD-KIT\_4  
\*POA

The **Ecomak** system is a cost-effective solution developed for starter / occasional practitioners, or those looking for a spare back up motor, and has been developed to allow the practitioner to do as much or as little as they want in terms of repairs and servicing.

The system supports the use of the revolutionary lightweight DYNAMIC handpieces.

ECOMAK DISC KIT ... includes: Belt, Ecomak Motor, Makita Battery 18v x 2, Makita Battery Charger, 1.2m Drive Cable, Dynamic Disc Handpiece, long curved, Repair Kit, Grease Gun & Grease, Black Trolley Case, Dust Mask, Safety Glasses, Stainless Steel Brush (with support),



The Dynamic **Hanging Motor** is ideal for working in clinics or stocks and allows greater freedom and maximum comfort for the practitioner when working in a clinic environment.

The system supports the use of the revolutionary lightweight DYNAMIC handpieces.

DYNAMIC HANGING MOTOR DISC KIT ... Includes Dynamic Hanging Motor, 1.2m Drive Cable, Curved Long Dynamic Disc Handpiece, Makita Battery Charger, 40v Makita Battery, Disc Removal Kit, Stainless Steel Brush with Support, Grease Gun with Food Grade Grease, Black Heavy Duty Trolley Case, Disposable Mask, Safety Glasses)



## Dynamic Handpieces

### Disc Handpiece (Curved or Straight)



Dynamic Disc handpiece which runs on the Dynamic Cross Drive System

- Also available as a Square Drive, Key Drive or Slot Drive to be compatible with other Powered systems.
- Comes with D-tool for dismantling the handle.
- Tools to replace the disc, gears and bearings are available to purchase separately.
- Available in Long 55cm, Medium 48cm or Short 10cm

### Diverse Handpiece (Curved or Straight)

\*POA

Dynamic Diverse handpiece allows you to use your favourite burs

- **Burrs not included – available for separate purchase.**
- Removal / Locking Tools are available to purchase separately.
- Available in Long 55cm, Medium 48cm or Short 10cm





Large Applecore  
(EBD-DAPPLEL)  
Diam:22mm



Medium  
Applecore  
(EBD-DAPPLEM)  
Diam:18mm



Small Applecore  
(EBD-DAPPLES)  
Diam:14mm



Short / X Slim  
Diastema  
(EBD-DDIASTXS)  
20 x 3mm



Short / Slim  
Diastema  
(EBD-DDIASTSLIM)  
20 x 4mm



Short / Wide  
Diastema  
(EBD-DDIASTWIDE)  
20 x 5mm



Medium / Slim  
Diastema  
(EBD-DDIASTSLIM-  
25X4)  
25 x 4mm



Long / Slim  
Guarded Diastema  
(EBD-DDIASTSLIM-  
30X4)  
25 x 4mm



Medium Squat  
Burr – Canine  
end  
(EBD-DBURRMC)  
18mm

## Jerry's Power Range



### Mighty EZ Float Complete Kit

Product Code JED-EZFKIT\_COMPLETE

\*POA

**Mighty EZ Float Complete Kit** is Jerry's most portable and manoeuvrable motor combined with an EQ Power Float and Mini Float for all your dental needs.

**Complete Kit includes:**

Mighty EZ Float Motor, 43" Complete Cable Assembly, EQ Power Float with Choice of Nickel Braided Burr, EQ Mini Float with Canine Burr, 2 Rechargeable Milwaukee Lithium-Ion 6.0AH Batteries, Milwaukee Wall Charger Unit, Grease Gun with Grease, Disk Wrench and T-Wrench Jerry's Hard Carrying Case



### Quick Float Complete Kit

Product Code JED-QFKIT\_COMPLETE

\*POA

Jerry's **Quick Float Complete Kit** is a great solution for working without a power source. This powerful unit runs on rechargeable Lithium-Ion batteries so you can work anywhere. The motor is incredibly light weight and maneuverable. With two batteries included in this kit, you can work with confidence throughout the day!

**Kit Includes ...**

Motor, Float with nickel braided apple core burr and nickel braided 1.25" disk and guard, 2 x Rechargeable Milwaukee Lithium Ion 2.0AH Batteries, Milwaukee Wall Charger Unit, Grease Gun with Grease, Disk Pliers and T-Wrench, Jerry's Hard Carrying Case



## HDE (Horse Dental Equipment)

### HDE Evolution Starter Pack

Product Code HDE-PRO\_MAL310

\*POA



Shaft Length: 54cm  
Head Height: 27/12  
Disc Diam: 32mm



#### Features

- 24V Lithium Ion Battery
- Variable speed - 2300 – 6700 rpm
- Electronic Clutch – prevents damage to tools
- Programmable Speeds – 6 speed setting
- Long Battery Life - 10-15 Hours
- Quiet
- Lightweight - Motor simply worn on a belt
- Extensive range of hand pieces to suit
- 1.5 hours' recharge time
- Car charger available



#### Revolutionary battery-operated hand equipment

This versatile motor allows you to use all your favourite HDE tools anywhere and anytime you need them. Convenient and light weight, this motor completes one of the most versatile equine dental systems available today. The curved shape of the flexidisc shaft allows the disc to sit perfectly flat on the surface of occlusion and the TWIST system of the flexidisc head ensures easy

#### Kit Includes

24V Evolution Motor & Battery, Flexidisc Long Curved TWIST, 1m Quickflex Reinforced Drive Cable, *choice of either* HDE Trolley Case or Black Heavy Duty Trolley Case, *choice of either* HDE Vest or Harness, Handpiece Holster, Wall Charger, Stainless Steel Brush, Safety Glasses & Dust Mask.

Black Heavy Duty Trolley Case



HDE Trolley Case



### HDE Electric Motor Starter Pack

Product Code HDE-PRO\_MAL210

\*POA



#### A complete set to kick-start your career in equine dentistry!

- 240v engine and power cord
- Flexidisc (long, curved twist)
- 1m Drive Cable
- Black Heavy Duty Case
- Belt
- Stainless Steel Brush
- Safety Glasses
- Dust Mask

## Flexidisc Handpieces

The Flexidisc handpiece is a versatile burr perfectly adapted to work efficiently on overgrowths as well as for routine profiling. Available in various shapes and sizes to suit every type of dentistry practice.

**Benefits:**

- High quality diamond disc (+ 900 horses)
- Diamond minimises soft tissue damage
- Small head height enables easier access to the 11s
- 360° rotating head allows optimal access (twist system only available in the curved handpiece)
- Curved handpiece follows the natural shape of the jaw, allowing better access to the rear of the mouth
- Low maintenance (no greasing necessary)
- Ergonomic rubber handle allows an optimal grip



**Flexidisc, Short Straight**  
HDE-FLEXSSH  
Length: 18cm



**Flexidisc, Standard Straight**  
HDE-FLEXSST  
Length: 32cm



**Flexidisc, Long Straight**  
HDE-FLEXSL  
Length: 54cm



**Flexidisc, Standard Curved Twist**  
HDE-FLEXCTST  
Length: 32cm



**Flexidisc, Long Curved Twist**  
HDE-FLEXCTL  
Length: 54cm



## 11s Handpiece

Product Code HDE-FRA\_F11G

\*POA

An excellent handpiece specifically designed to work on the 11th molars. The compactness of the head eases the work in tight mouths such as ponies.

Flanged guard gives full protection to the buccal mucosa and tongue whilst the clearance above the guard limits the crushing of the burr and makes cleaning easier.

Designed to work in conjunction with all HDE motors and connections.

Length: 56cm

Head Height: 1cm



## Polyfloat Handpieces

The Polyfloat is an extremely versatile tool which allows global dentistry inside the mouth, from routine profiling to decay and diastema treatment, thanks to a complete range of 14 burrs (sold separately). Available in various shapes and sizes, there is sure to be a polyfloat for you.

### Benefits:

- 360° rotating head allows optimal access (twist system only available in the curved handpiece)
- Curved version follows the natural shape of the jaw, allowing better access to the rear of the mouth
- 14 different burrs available for every type of treatment (profiling, decay, diastema, bit seat)
- Low maintenance (no greasing necessary)
- Ergonomic rubber handle allows an optimal grip



**Polyfloat, Short Straight**  
HDE-POLYSSH  
Length: 15cm  
\*POA



**Polyfloat, Standard Straight**  
HDE-POLYSSST  
Length: 31cm  
\*POA



**Polyfloat, Long Straight**  
HDE-POLYSL  
Length: 54cm  
\*POA



**Polyfloat, Standard Curved Twist**  
HDE-POLYCTST  
Length: 31cm  
\*POA



**Polyfloat, Long Curved Twist**  
HDE-POLYCTL  
Length: 54cm  
\*POA



## Carbide Diastema Burr Adapter

Product Code TEE-HDEBA1  
\*POA



Allows you to use your favourite Carbide Diastema Burrs with Polyfloats without causing thread damage.

Made in Australia by The Edge Equine



Diamond burrs feature a high quality finish thereby minimising soft tissue damage.

Applecore / Occlusal / Buccal Burrs



Applecore 14mm  
(HDE-BURRAPP14)  
Diam: 14mm



Applecore 18mm  
(TEE-HDE18)  
Diam: 18mm



Applecore 22mm  
(HDE-BURRAPP22)  
Diam: 22mm



Applecore 18mm  
(canines)  
(HDE-BURRAPP18C)  
Diam: 18mm



Buccal / Chamfer  
(TEE-HDEBB)  
Diam: 29mm



Occlusal  
(HDE-BURROC)  
Diam: 16mm



Occlusal  
(TEE-HDEBO\_10)  
Diam: 10mm



Occlusal  
(TEE-HDEBO\_08)  
Diam: 8mm

Diastema Burrs



Cylindrical Long V2  
(HDE\_BURRCYLL)  
Length: 25mm  
Diam:4.5mm



Cylindrical Short V2  
(HDE\_BURRCYLS)  
Length: 13mm  
Diam:4.5mm



Cylindrical Short Versatile  
(HDE\_BURRCYLSV)  
Length: 20mm  
Diam:3mm



Cylindrical Long Versatile  
(HDE\_BURRCYLLV)  
Length: 25mm  
Diam:4mm



Cylindrical Special Long  
(HDE-BURRCYLSPL)  
Length: 31mm  
Diam:4.5mm

Debriding Burrs



Bowl  
(HDE\_BURRBOWL)  
Diam:3mm



Conical Short  
(HDE\_BURRCONS)  
Length: 9mm  
Diam:3mm



Conical Long  
(HDE\_BURRCONL)  
Length: 15mm  
Diam:3mm



We have an extensive selection of profiling equipment and accessories to suit any dental requirements

Choice of speciality hand pieces such as:

- Maxillary Drill (HDE-FRA\_F1)
- Mandibular Drill (HDE-FRA\_F2)
- Angle Drill (HDE-FRA\_F3)
- Bowl Drill Ø20 (HDE-FRA\_F4)
- Bowl Drill Ø18 (HDE-FRA\_F4D18SP)
- Bowl Drill Ø8 (HDE-FRA\_F4D8)
- Disc Drill (HDE-FRA\_F5)
- Bit Seat Drill (HDE-FRA\_F6C)
- Vestibular Drill (HDE-FRA\_F6)
- Canine Drill (HDE-FRA\_FSC)
- Tooth Socket Drill (HDE-FRA\_F9)

Hand piece extensions

- Short (HDE-FRA\_EXTC)
- Medium (HDE-FRA\_EXTM)
- Long (HDE-FRA\_EXTL)



Drill Attachments



## MAI Animal Health

### VERSA FLOAT™ KIT, Large Head Shaft with Platform & Irrigation

Product Code VDP-0120103

\*POA

The Versa-Float™ Kit provides practitioners a versatile mobile instrument to enhance floating techniques. The variable speed unit is controlled by the trigger on the pistol-grip handle, allowing the practitioner more control and accuracy in the mouth. Kit customisation available.

**Complete Kit includes:**

- Versa-Float™ Platform Motor
- Versa-Float™ Large Head Shaft with 1" Diamond Disc
- Irrigation System for the Large Head Shaft
- Maintenance Kit
- 14.4-Volt NiMH Rechargeable Batteries (2)
- Battery Charger
- Protective Carrying Case
- Instruction Manual



\* Available to registered veterinarians



The Flexi-Float™ Ultra is a lightweight, compact, all-in-one, battery-powered float system. The slender design and movable disc angle allows practitioners to manoeuvre around the dental arcade, along with its shaft which rotates 180 degrees for use on both the upper and lower arcade.

This well-balanced system has fully integrated irrigation, suction and trigger speed control which allows for quick removal of hooks in the mouth. The Flexi-Float™ Ultra is battery powered making it completely mobile. The rechargeable battery lasts between 8 - 10 horses. The diamond discs are smoother and last longer than carbide discs and can be quickly changed out in the field, taking less than one minute. Clean daily and grease after every 100 uses. Aluminium carrying tote sold separately.



**Complete Kit includes:**

Flexi-Float™ Ultra, 1" Diamond Disk, Battery-Powered Vacuum, Li-Ion Batteries for Vacuum (2), Battery Charger for Vacuum, Irrigation System, Maintenance Kit (Grease Gun, Brush), 1.4-Volt NiMH Rechargeable Batteries (2), Battery Charger, Protective Carrying Case, Instruction Manual

# Extraction Instruments

Equine Buccotomy Kit (Full Set)

Product Code VDP-53540  
\*\$5925.00

**Contents:**

- 1/8" x 8" Carbide Burr
- Short Drill Guide
- Long Drill Guide
- Short Cannula
- Long Cannula
- Short Trocar
- Long Trocar
- Short Stylet
- Long Stylet
- T-Tap Handle
- Luxator
- Offset Elevator
- Straight Elevator
- Grasping Forceps
- Curette
- Mallet
- Slide Hammer
- Short Extraction Rod
- Long Extraction Rod
- 5mm x 8" Drill Bit
- Oversized Extraction Rod
- Durable Plastic Case



**Note:** Use 8 Flexible Round Vinyl Caps (20-203-0019) and 2 pieces of 1/2" clear tubing (05-740-0001) to cover tips.

**Starter Kit also available** (Product Code VDP-53545 ... \*\$4350)

**Contents:**

- |                   |                      |                      |
|-------------------|----------------------|----------------------|
| Short Drill Guide | Straight Elevator    | T-Tap Handle         |
| Short Cannula     | Offset Elevator      | Curette              |
| Short Trocar      | Short Extraction Rod | Luxator              |
| Short Stylet      | 5mm x 8" Drill Bit   | Durable Plastic Case |
| Grasping Forceps  |                      |                      |

Please note: Buccotomy Set to be used in conjunction with Gunther Speculum

## Large Extraction Forceps

Product Code WM-DEN01  
\*\$395.00



- Large Extraction Forceps
- Curved, concaved knurled jaws allow secure tooth contact
- Length: 48cm (19")



## Duck Bill Molar Extractor Rotator

Product Code WM-1066  
\*\$409.00



- Used to elevate Molar Teeth lingually
- Length: 48cm (19")

## 3-Prong Extractor (On / Off Side)

Product Codes  
Off Side ... WM-1054a  
On Side ... WM-1054b \*\$325.00

On Side  
Extractors



- Ideal for removing caps and small molars
- Length: 48cm (19") (19")

Off Side  
Extractors



## Hewson's Cap Extractor

Product Code WM-1020  
\*\$237.50

- Designed primarily for removing upper and lower caps and can also be used for removing small molars.
- Now fitted with spring for easy use
- Quality stainless steel
- Box style head with serrated jaws for tighter grip and leverage on teeth
- Length: 40.5cm (16")



## Reynold's Cap Extractors

Product Codes Upper ... WM-1009  
Lower ... WM-1008A  
\*\$180.00



- The traditional and ever popular instrument for extracting the lower retained deciduous teeth (caps)
- Can also be used to remove small premolars and incisors
- Made from quality stainless steel
- Length: 38cm (15")

## Molar Extractor, Standard

Product Code WM-1059  
\*\$325.00

- Extremely well designed head for grasping the tooth during extraction
- Length: 48cm (19")



## Molar Extractor, Four Prong

Product Code WM-1055  
\*\$325.00

- Ideal Forceps with excellent grip
- Grips short, crowned geriatric and some fractured teeth
- Length: 48cm (19")



## Molar Extractor, Four Prong (Pony)

Product Code WM-1021  
\*\$297.50

- A marginally narrower and lightweight version of the Molar Extractors, 4 Prong
- Length: 48cm (19")



## 4 Prong Extractor with Fulcrum

Product Code WM-1063  
\*\$325.00

- Fulcrum location aids in the extraction of second and some third premolars
- Quality stainless steel
- Length: 48cm (19")



**New and Improved Design**

3 exchangeable heads of different sizes allow a wide choice of extracting angles. Heads snap in place for ease of placement and remain secure on the arcade. Easily snaps off when they need to be changed.

Comes with main handle and storage shaft.

Shaft Size: 35.5cm (14"), stainless steel

Head Sizes: 13mm (1/2") / 15mm (5/8") / 8mm (3/4"), aluminium

Made in Australia by The Edge Equine 



**New and Improved Design**

7 exchangeable heads of varying sizes allowing the practitioner a multitude of extracting angles. Heads snap in place for ease of placement and remain secure on the arcade. Easily snaps off when required.

Comes with two main handles and storage shaft as well as customised storage bag to protect your tools.

Shaft Size: 35.5cm (14"), stainless steel

Head Sizes: 14mm / 17mm / 21mm / 25mm / 29mm / 33mm / 37mm, aluminium

Made in Australia by The Edge Equine 



Mesial Spreaders



**Standard**

WM-1060 sa (3mm head)

WM-1060 sb (6mm head)

WM-1060 sc (9mm head)

**Mesial**

WM-1060 ma (3mm head)

WM-1060 mb (6mm head)

WM-1060 mc (9mm head)

Overall length: 48cm (19")

Standard Spreaders

3mm 6mm 9mm



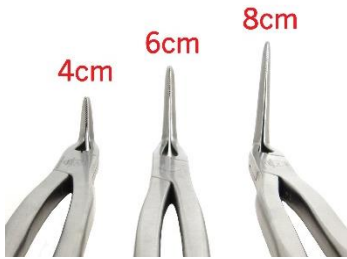
- Specifically designed to keep most of the pressure on the tooth designated for extraction
- Lightweight
- Length: 48cms (19")



**Slim Line Fragment Forceps,  
Long Nose**

Product Codes

4cm ... WM-DEN20  
6cm ... WM-DEN06  
8cm ... WM-DEN07  
\*\$395.00



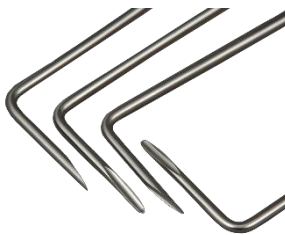
- The ultimate in fragment removal
- 4cm, 6cm, or 8cm available
- Length: 48cm (19")
- Stainless steel



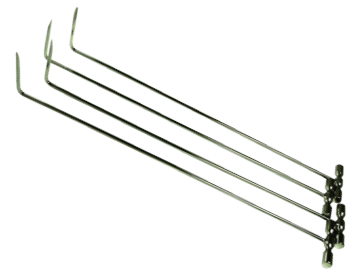
**Extended Molar /  
Fragment Elevator Set (4 pce)**

Product Codes

Long ... VDP-53654 \*\$590.00  
Short ... VDP-53654S \*\$590.00



- Designed to remove a tooth fragment from an extracted molar's socket
- Set includes 4 configurations: vestibular, mesial, distal and lingual
- 50.8cm length with choice of long (7.5cm) or short (5cm) elevator blades which provides leverage required to remove fragments
- Stainless Steel



**Gingival Elevators (set of 2)**

Product Code TEE-GE01  
\*\$160.00



- Designed to loosen the gingiva from the tooth before extraction
- Includes 2 curvatures for the lingual and buccal position
- Overall Length: 31.5cm (12.4")

Made in Australia by The Edge Equine



**Compound Ronguers**

Product Code  
WM-1078  
\*\$180.50

**Compound  
Forceps, 4 Prong**

Product Code  
PED-008  
\*\$248.75



- An excellent instrument for wolf teeth, blind wolf teeth, bone spurs fragmented incisors and the like
- Length: 23cm (9")



Designed by Carl Mitz

Length: 30.5cm (12")

Material: Stainless Steel



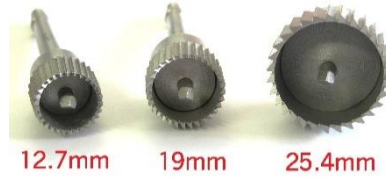


## Trephines

\*\$116.95

Horsley's Trephines are made of quality stainless steel and have fully detachable handles.

Size	Product Code
12.7mm (½")	VDP-0117210
19mm (¾")	VDP-0117220
25.4mm (1")	VDP-0117230



## Dental Aspirating Syringe with Thumb Ring, Cartridge 2.2ml

Product Code  
EB-04  
\*\$46.20

## Nerve Block Syringe, 40cm,

Product Codes  
WM-2100S\_1.8 or WM-2100S\_2.2  
\*\$195.00



A hypodermic syringe used to inject local anaesthetics

Cartridge: 2.2ml  
Length: 16cm (6.3")

40cm Extended Intra-Oral Local Anaesthetic Syringe. For administering mandibular local anaesthetic for nerve blocking and general nerve block prior to extraction. Choose between 1.8ml or 2.2ml LA Cartridge (not supplied)



## Hibbs Osteotome, Curved Head

Product Code  
TEE-HOSTC  
\*\$102.64

## Hibbs Osteotome, Straight Head

Product Code  
TEE-HOSTS  
\*\$102.64



- Hibbs Osteotome is designed to cut or chisel bone when precise cutting is necessary
- Available straight or curved
- Blade width: 13mm (½")
- Length: 240mm (9½")

Made in Australia by The Edge Equine 



## Tooth Punch, Curved

Product Code  
TEE-TPC  
\*\$60.00

## Tooth Punch, Straight

Product Code  
TEE-TPS  
\*\$60.00



- Used for removal of cheek teeth through a trephined hole into the sinus. A knurled handle ensures a better grip. Available straight or curved.
- Length: 20cm (8")

Made in Australia by The Edge Equine 





Used in conjunction with osteotomes, chisels and gouges to apply a swinging force when cutting or shaping bone.

## Wolf Teeth / Incisors

### The Edge Equine Wolf Tooth Elevator Kit – Complete

Product Code TEE-WT2510  
\*\$425.00



#### A Complete Kit designed with the ultimate professional in mind

Our 'Complete' kit includes:

- 1 Schwartz WT Elevator (TEE-WT\_SCHEL)
- 1 WT Forceps (WM-1014S)
- 1 Long Handle (TEE-WT-HL)
- 1 Short Handle (TEE-WT-HS)
- 1 each of 6mm, 8mm, 10mm & 12mm Cutting Heads (TEE-WT-EXH06 / 08 / 10 / 12)
- 1 Custom Roll Up Tool Bag (BCW-CB02)

Made in Australia by The Edge Equine 

All items contained within the kit, including cutting heads, are available for separate purchase.

### The Edge Equine Wolf Tooth Elevator Kit – Basic Burgess

Product Code TEE-WT2515  
\*\$295.00



#### A handy kit for those starting out or only requiring the essentials

Our 'Basic Burgess' kit includes:

- 1 Long Handle (TEE-WT-HL)
- 1 Short Handle (TEE-WT-HS)
- 1 each of 6mm, 8mm, 10mm & 12mm Cutting Heads (TEE-WT-EXH06 / 08 / 10 / 12)
- 1 Custom Roll Up Tool Bag (BCW-CB02)

Made in Australia by The Edge Equine 

All items contained within the kit, including cutting heads, are available for separate purchase.

**Incisor Elevator Set  
(3 pcs)**

Product Code  
WM-DEN45  
\*\$150.00

**Incisor & Wolf  
Tooth Elevator Kit  
(6 pcs)**

Product Code  
WM-DEN98  
\*\$240.00



**Extended Incisor & Wolf Tooth Elevator Set**

Product Code VDP-53653  
\*\$395.66



- Designed to be used in conjunction with a speculum
- Unlike most elevators, which are often too short when working with a speculum, these elevators are 34cm (13½") in length enabling them to easily reach the affected tooth
- Set includes right and left configuration elevator
- Made in USA of surgical grade stainless steel

**Wolf Tooth Forceps  
with Spring**

Product Code  
WM-1014S  
\*\$155.00

**Adjustable Wolf  
Tooth Elevator**

Product Code  
VDP-0111312  
\*\$129.36



- Effective for wolf tooth and incisor extractions
- Length: 30cm (12")



- Features an aluminium handle and stainless steel German blade
- Blade length can be shortened to 15cm (6") or 23cm (9") and replaced when worn



**Straight Wolf Tooth Elevator**

Product Code  
WM-1401  
\*\$60.00

**Schwartz Wolf Tooth Elevator**

Product Code  
TEE-WT\_SCHEL  
\*92.65



- Overall length: 30cm (12") including handle
- Head size: 8mm
- Quality Stainless Steel



- A handy little wolf tooth elevator!
- Length: 17cm (6.7")
- Head Size: 10mm
- Australian made from quality Stainless Steel

Made in Australia by  
The Edge Equine



**Martel Wolf Tooth Elevator Set (2 pcs)**

Product Code  
VDP-53652  
\*\$192.62

**Milk Tooth Elevator**

Product Code  
VDP-0111330  
\*\$73.15



- Features brass handles and stainless steel blades, providing perfect balance for removing hard to reach wolf teeth
- Two styles available - Straight or Angled. 7.6cms overall with shaft length of 5cms. Ball handle is 3.8cms in diameter



- A versatile little elevator to keep in your tool box
- Stainless steel
- Overall length 14cm (5½"). Blade width 4mm (3/16")

**Root & Fragment Forceps**

Product Code  
WM-1011  
\*\$105.00

**Incisor & 2<sup>nd</sup> Premolar Forceps**

Product Code  
WM-1083  
\*105.00

- For removing tooth splinters and roots
- Quality stainless steel
- Length overall: 19cm (7½") with 1.9cm (¾") long jaw which is offset by 5/8"



- For removing incisors and second premolars
- Narrower jaws make it easier to manipulate and its universal handle style enables left or right hand use on both upper and lower teeth
- Length: 18cm (7")



**Upper and Lower Separating Forceps**

Product Code  
WM-1019  
\*105.00

**Incisor Separator Forceps**

Product Code  
WM-1530  
\*105.00

- For separating and splitting juvenile incisors away from adult teeth when they have grown behind or in front of them
- Quality stainless steel
- Length overall 16.5cm (6½")  
Jaw length 1.9cm (¾")



- Another variation on the Upper and Lower Separating Forceps
- Length: 18cm (7")



# Pegasos – for High Precision Extraction

## Molar Spreaders

### Product Codes

No. 1 ... HDE-PEGA\_320001  
 No. 2 ... HDE-PEGA\_320002  
 No. 3 ... HDE-PEGA\_320003  
 \*POA



Three different sizes of spreaders available allowing for precision step by step work.

Spreader No. 1 – Narrow, 4mm thickness. This spreader is mainly used as the first step spreader for the maxillary cheek teeth as they're wider than mandibular cheek teeth.

Spreader No. 2 – Medium, 5mm thickness Works for the upper jaw as a second step and for mandibular cheek teeth as a first step.

Spreader No. 3 - Medium, 6mm thickness. Used only partially (1/3 - 2/3) for the maxillary cheek teeth and up to full effect for mandibular cheek teeth.

It's recommended to use the forceps to loosen the tooth with rotational movements between the spreading steps, otherwise the risk of breaking the tooth / roots will increase.

Spreaders can be disassembled and reassembled again in many different ways like the Pegasos Molar Forceps.

## Molar Forceps

### Product Codes

No. 1 ... HDE-PEGA\_321001  
 No. 2 ... HDE-PEGA\_321002  
 Pony ... HDE-PEGA\_321020  
 \*POA



Extraction forceps are used to further loosen teeth with rotational and tilting movements and finally to extract the teeth in combined with a fulcrum.

Extraction Forceps No. 1 - Particularly helpful for mandibular cheek teeth extractions but can also be used for the upper jaw.

Extraction Forceps No. 2 - Specifically designed for the wider maxillary cheek teeth.

Pony Forceps - Designed for horses and ponies with smaller heads.

The Extraction Forceps can be disassembled and reassembled again in many different ways like the spreaders.

\* Also available is the Pegasos Reverse Fulcrum, designed to be used with No. 1 and No. 2 Pegasos Forceps ... HDE-PEGA\_321010



Thanks to this Reverse Fulcrum Extension there is no need for extra Reverse Fulcrum Forceps.

This system works for both lower and upper cheek teeth and is especially recommended for 06 and 07's.

It can be quite helpful also for lower 09 and 10 due to the curved nature of these teeth.

*\* Designed to be used with Pegasos Molar Forceps No. 1 (HDE-PEGA\_321001) and No. 2 (HDE-PEGA\_321002)*



Used to loosen gingiva, remove tooth fragments or remaining roots. Luxators included have fine, sharp tips and can be applied in any turning direction.

Inserts can also be used in a backward direction which is helpful for lower premolars.

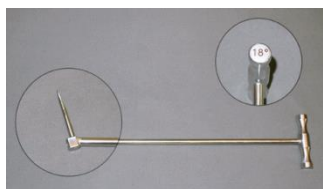
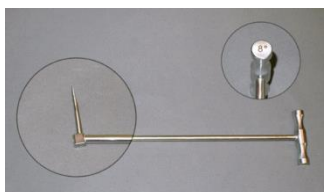
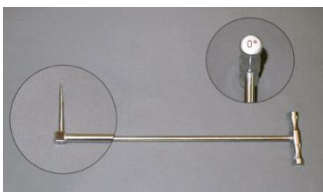
Set includes:

8° handle (most commonly used size - able to address up to 80% of problems encountered)

Set of 5 luxators (5mm / 0.19")

Torx screwdriver (non-autoclavable)

*\* Storage block not included - available for separate purchase*



Dental picks are intended for intraoral use

4 different types of handles available - 0° / 8° / 18° / 30°

0° handle is useful for work in the mandibular jaw area

8° handle (most commonly used size - able to address up to 80% of problems encountered)

18° and 30° handles are used more for caudal teeth

For use with the Pegasos Dental Pick system but can also be used with the Short Straight Handle

### Narrow Luxator Set



Used to loosen gingiva, remove extra small tooth fragments or remaining roots. Luxators have fine, sharp tips and can be applied in any turning direction.

Set of 5 luxators (4mm / 0.16")

Product Code HDE-PEGA\_310010

### Chisel Set



Chisel set contains 4 different length inserts

Used to gain access into the interdental space to loosen or remove tooth fragments

Product Code HDE-PEGA\_310020

### Probe Set



Probe set contains 5 different inserts lengths

These probes are particularly useful for exploring deep fistula canals and other dental and paradental cavities

Product Code HDE-PEGA\_310030

### Sharp Spoon Set



Sharp spoon set contains 4 different inserts lengths

These curettes are useful for cleaning the tooth socket and removing deep root fragments

Product Code HDE-PEGA\_310040



The kit is composed of a short handle with different luxators and is highly valuable for the extraction of wolf tooth, incisors, canines and deeply located root fragments

Contains Straight Short Handle and 6 luxators - straight, concave and convex curved inserts in 4mm and 5mm versions (0.16" and 0.19")

Concave, curved tips allow good access to the wolf teeth and enables careful extraction with minimal damage

Short Straight Handle is designed to also allow the gentle use of a hammer

Furthermore, this handle can be combined with all different inserts from the Dental Pick System

Kit components also available for separate purchase ...

Short Straight Handle - HDE-PEGA 301001 *(pic right)*

Luxator Insert, Straight 150/5 - HDE-PEGA\_312002

Luxator Insert, Concave 150/5 - HDE-PEGA\_312003

Luxator Insert, Straight 150/4 - HDE-PEGA\_312004

Luxator Insert, Concave 150/4 - HDE-PEGA\_312005

Luxator Insert, Convex 150/4 - HDE-PEGA\_312006

Luxator Insert, Convex 150/5 - HDE-PEGA\_312007



Dental Pick Storage Block

Product Codes

Metal ... HDE-PEGA\_BLOCKB

\*POA

Hard Tissue ... HDE-PEGA\_BLOCKA

\*POA

For storing and protecting your burrs, choose from either of our autoclavable storage blocks

Hard Tissue Block  
(autoclavable)



Metal Block  
(autoclavable)





# Examination & Periodontal Instruments

We offer equine specific Periodontal Instruments that are based on human periodontal instruments but have been modified for equine use by lengthening their handles. All items are premium quality and stainless steel.

**Equine Diagnostic Kit (Complete)** Product Code TEE-DIAG  
\*\$525.00

Equine Diagnostic Kit instruments are offered separately or in a convenient case (as shown).

Individual Instrument	Product Code	Qty
Explorer Dental Probe	VDP 0172050	1
Periodontal Dental Probe	TEE-PP	1
Equine Dental Needle Pick (3 needles)	VDP 0117520	1
Dental Pick	TEE-DP1003	1
Dental Mirror	TEE-DENMIR	1
Dental Mirror Insert (replacement)	TEE-DENMIR_01	1
Alligator Forceps	VDP 53412	1
Carry Case	BCW-DC	1



**Explorer Dental Probe** Product Code VDP 0172050  
\*\$78.12 **Universal Tartar Scraper (Scaler)** Product Code UNI-88-11-712  
\*\$19.00

- Used to probe pulp pockets and occlusal surfaces.
- Measures 38cm (15") in length
- Stainless steel



- Universal Tartar Scraper (Scaler)
- Flat end
- Size: 17.5cm (7")



**Alligator Forceps, 30cm** Product Code VDP-53412  
\*\$52.51 **Alligator Forceps, 30cm - Right Angled** Product Code WM-65661  
\*\$99.00

- Handy tool to aid in the removal of packed-in foods
- Measures 30cm (12") in length
- Quality Stainless Steel



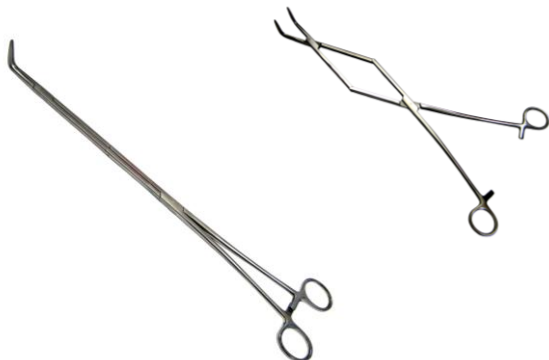
- Designed to loosen and remove impacted food lodged between teeth
- Length: 30cm (12") Head height: 2cm (1")



**Alligator Forceps,  
40cm Right Angled**

Product Code  
WM-65661\_1  
\*\$105.00

- A longer version of the 30cm right angled forceps.
- Length: 40cm (16") Head height: 3.5cm (1½")



**Mouth Mirror**

Product Code TEE-DENMIR  
\*\$135.40

- Stainless steel equine dental mirror allows examination of areas that cannot be clearly seen from the front of the mouth. Allows for swift detection of ulcers, fractures, periodontal disease etc.
- Overall Length: 47.5cm (19")
- Mirror length: 6cm (2.4")



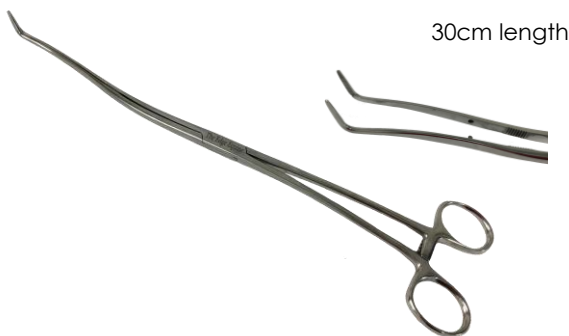
Replacement mirror inserts readily available.  
(TEE-DENMIR-01 \*\$27.00)

Made in Australia by  The Edge Equine

**Periodontal Forceps,  
30cm**

Product Code  
WM-DEN1200K  
\*\$170.00

Designed to remove forage that accumulates in periodontal pockets



**Periodontal Pick  
(Set of 3)**

Product Code VDP-53405  
\*\$143.35

- Measures 43cm (17") in length
- Includes 3 x Needle Picks, 2.5cm (1") and 1 x Allen Key
- Made from quality Stainless steel



**Mouth Mirror, Small  
with Interchangeable  
Heads**

Product Code  
WM-DEN1014A  
\*\$90.00

A handy little mirror for reaching all those difficult to see pockets. Comes with 5 interchangeable mirrors.

Overall length: 43cm  
Mirror size: 3cm



**Scalers**

\*POA

- The Edge Equine stock a number of scalers, crafted of quality stainless steel and usable on a variety of species.
- Contact us to discuss your specific requirements and for prices on each.



**Complete Water Kit - Now with Locking Handle!**

Introducing our new upgraded version of our Dental Water Kit ... **Version 2** with Lockable Handle! Same as our original Dental Water Kit, this kit still comprises the Dental Water Pick, Dental Flushing Wand and also the Incisor Water Pick, but now you can lock and unlock the new ergonomic handle easily, guaranteeing a continuous flow of water without pressure building up on your trigger finger and hand. Complete with hose, fittings and attachments our Dental Water Kit is ready to connect straight to your pressure bottle or garden hose.



**Benefits / features**

- Three interchangeable heads giving you the ability to use the precision flushing head, the general flushing head or the incisor water pick
- Dislodges impacted food and common particles from diastema's
- NEW locking system on the comfortable, ergonomic handle
- Great for general cleaning of the mouth
- Made from acetyl, stainless steel and brass
- Can be used either with a pressure bottle (sold separately ... TEE-IRRB) or directly from a standard 12mm hose fitting
- Compatible with pumps which may be installed on mobile crushes
- Individual components sold separately.



Made in Australia  
by The Edge Equine

**Other Kit variations ...**

**Dental Water Pick Kit VERSION 2 \***

Product Code TEE-DP1004\_V2  
\*\$306.84



Great for general cleaning of the mouth.

**Dental Flushing Wand Kit VERSION 2 \***

Product Code TEE-DWP1003\_V2  
\*\$312.42



Releases a slightly greater volume of water than the Dental Water Pick, thereby producing more of a 'flushing' effect.

All kits come complete with hose, fittings and attachments ready to connect straight to your Irrigation Bottle (sold separately - TEE-IRRB) or garden hose.

**Irrigation Bottle, 5L (with attachments)**

Product Code TEE-IRRB  
\*\$ 81.45

5 Litre capacity

Ready to connect straight up to any of our Dental Water Kits and Irrigation Kit



**NEW – Now available with a Wi-Fi dongle enabling better manoeuvrability for the user**

**Strong and durable wired oral camera**

- 5.0 Mega pixel macro lens auto focus camera module image resolution
- High definition macro lens auto focus 1.5cm – 3.0cm
- 10 bright LEDs
- 90 degree wide viewing angle
- Coms ¼ image sensor
- 600mm length
- Water resistant strong easy clean alloy body
- Image storage to PC or tablet with full functionality via our new dongle.
- Dongle software for internet free connection, available via Google Play, the Apple App Store and Windows software link below
- Hard case included with camera



**NEW Intra Oral Camera Wi-Fi Dongle**

Product Code EBD-ENDOFULLHD\_DG / \*\$ 718.69



- Links via non-internet connection Wi-Fi to Android, Apple or Windows device
- Software available to download via Google Play, the Apple App Store and Windows
- Enables FULL camera functionality over all types of devices
- Dongle attaches via a long lead to the camera and can be placed in a pocket
- Laptop, tablet or phone can be kept in a safer place nearby to avoid damage
- Consultation records can be kept on your device for later review.

**Dental Pick  
35cm (14")**

Product Code TEE-DP1003  
\*\$95.00

- 9.53mm solid shaft with replaceable tip
- 35cm overall length (not including handle). 2.5cm needle pick length
- Also available with T-Bar Handle (inset) TEE-DP1003\_1
- Replacement needle pick inserts available (TEE-DP1003\_2, \$5.00)



Made in Australia by  
The Edge Equine



**Periodontal Dental  
Probe 38cm (15")**

Product Code TEE-PP  
\*\$90.00

**Cleaning Probe**

Product Code WM-1028  
\*\$50.00

Used to measure the depth of the gingival sulcus and periodontal pockets in millimetres to help evaluate the extent of periodontal support.



Made in Australia by The Edge Equine



- A great little tool to keep in your tool kit for general cleaning
- 35cm long (including handle)

# Lighting

## EEZY-View™ LED Rechargeable Headlight

Product Code VDP-53840  
\*\$702.81

A long-lasting, high power LED headlight offering 1,000 Lumens and four brightness modes. Features a soft-touch switch to change light modes, a fully adjustable and comfortable headband, an LED housing pivot mount with battery mounting tabs and bracket.

Works continuously for over 3.5 hours.

Includes:

- Two removable, rechargeable Li-Ion battery packs
- Wall charger



## MDS LED Headlight, 5 Watt

Product Code VDP-48312  
\*\$563.80

This compact, hi-performance headlamp is durable, portable, and brighter than any other LED period! Focusable "spot", comfortable strap, up and down angle adjustment make this headlamp a must-have tool for everything from surgery to fieldwork.

- 300 lumens of LED light for 100,000 working hours
- Adjustable light spot size, brightness, and position
- Fully adjustable headband and overhead strap
- 2 rechargeable batteries with charger
- Compatible with 2.5x Surgical Loupes



## DYNAMIC Headlight with USB / Rechargeable Battery

Product Code EBD-LIGHT-HEAD-USB  
\*\$478.55



- DYNAMIC Headlight has 6700k super clear daylight 1300 lumens XML2 LED
- Long life USB rechargeable battery
- Lightweight and robust
- 27mm reduced diameter stainless steel housing
- Comfortable heavy-duty headband



- Fits most speculums
- Strong in-built magnets
- 2 high powered LED lights
- Protective metal plate protects light from float / power tools
- Coiled cord adds more flexibility



**Rechargeable Battery Box (The Edge Equine slimline design)**

- Powder coated, aluminium casing
- Water resistant
- Durable
- Recharging indicator light
- USB charge Cable
- Battery Box also available for separate purchase (TEE-BATRE)



**Powerful magnetic light that fits on the speculum bite plates using ultra strong magnets**

- Rechargeable water-resistant battery pack that attaches to the side of the speculum
- Bright 6700 super clear daylight 1300 XML2 LED with 3 brightness settings
- Very long battery life with USB charging
- Durable and long lasting
- Offers the practitioner great visualisation
- Great for showing clients dental problems and for teaching purposes



# Accessories

## CARRY BAG Rollup (Floats) LARGE

Product Code  
BCW-CBL  
\*\$145.00

## Carry Case (Large) 'The Edge Equine'

Product Code  
BCW-DC  
\*\$144.00



- Made to accompany our Hand Float Starter Kits, this roll up tool bag can be purchased as part of a kit or separately
- Made from reinforced vinyl with numerous pouches to hold your tools safely and securely, as well as storage space for your rasps.
- Flexible vinyl material makes this item extremely easy to keep clean.
- Size: 69 x 89cm (unrolled)

- Made from reinforced vinyl with a sturdy foam insert to protect your tools and hold them in place. With a handy, generous sized pocket for smaller items such as blades or screws, this case is a must!
- Unlike other kit bags, the flexible vinyl material makes this item extremely durable and easy to keep clean.

\* Tools not included



## Small Roll Up Bag 'The Edge Equine' (Wolf Tooth)

Product Code BCW-CB02  
\*\$116.35

- Made to accompany our Wolf Tooth Kits, this roll up tool bag can be purchased as part of a kit or separately
- Made from reinforced vinyl with 5 separate pouches to hold your tools safely and securely, as well as storage space for your cutting heads.
- As well as being a handy storage bag, the flexible vinyl material makes this item extremely easy to keep clean.
- A must-have for wolf tooth items!
- Size: 40 x 55cm (unrolled)



## Bucket Buddy 'The Edge Equine'

Made from quality stainless steel tubing with heavy duty plastic inserts to protect floats and blades to minimise noise when placing tools into the bucket.

Available in 3 sizes - 19cm (7 1/2"), 26cm (10"), 31cm (12")

Product Codes

TEE-BB19 \*\$58.15 Bucket Buddy, 19cm  
TEE-BB26 \*\$62.45 Bucket Buddy, 26cm  
TEE-BB31 \*\$67.70 Bucket Buddy, 31cm

Made in Australia by The Edge Equine 



**Stainless Steel Bucket,  
with Rubber Insert, 16L**

Product Code  
TEE-BUCSS  
\*\$95.44

**6 Bag IV Hanger**

Product Code  
IV6H  
\*\$295.35



- Stainless steel buckets are strong and durable. The totally seamless construction ensures the bucket will hold the strongest disinfectants
- Removable rubber lining for easy cleaning
- Ideal for soaking floats and other dental tools. Accompany it with The Edge Equine Bucket Buddies for a professional job



- Top swivel point
- Stainless steel
- Sturdy and durable

Made in Australia by  
The Edge Equine



**300ml Plastic  
Dosing Gun**

Product Code  
LAB-1001  
\*\$74.50

**600ml Plastic Dosing  
Syringe**

Product Code  
LAB-1002  
\*\$85.40

- 300ml (10fl oz) capacity
- Easy to use, **one-hand** operation with large dosing capacity
- Ideal for rinsing the horse's mouth
- Body made from durable plastic with a 190mm (7 1/2") long, curved metal drenching nozzle
- Amount of liquid dispensed is adjustable on each pull of the trigger
- Replacement O-Rings can be purchased separately



- 600ml (20fl oz) capacity
- Large durable handled plunger with clear nylon barrel and 100mm brass nozzle
- Ideal for rinsing the horse's mouth
- Replacement O-Rings can be purchased separately



**Replacement O-Ring  
(300ml Plastic Dosing Gun)**

Product Code  
LAB-1001-1  
\*\$5.00

**Replacement O-Ring  
(600ml Plastic Dosing Gun)**

Product Code  
LAB-1002-1  
\*\$4.95



\*sold singularly



\*sold singularly

**Stainless Steel Brush  
with bucket clip**

Product Code  
TEE-BRSS  
\*\$43.15



Excellent for keeping your diamond burs and discs clean and cutting freely.  
Comes with bucket clip ready to attach straight onto your tool bucket.



# Head Stand and Dental Halters

## Self Elevating & Folding Head Stand 'The Edge Equine'

Product Codes

Cradle ... TEE-HS1001  
\*\$1149.00  
Standard ... TEE-HS1001 ST  
\*\$1139.00



The Edge Equine Full Size Folding Head Stand has a self-elevating headrest which makes holding a sedated horses head, whilst adjusting the headrest height and angle, a one-handed operation.

Takes only seconds to set up and fold up neatly to fit into the back of any vehicle.

Features:

- Choice of 'Cradle' or 'Standard' headrest
- Lightweight (approximately 9kgs)
- Work height (min 1050mm, max 1520mm)
- Easy to transport and set up
- Compact and easy to store
- Simple to use
- Replacement parts readily available



## Miniature Headstand also available ...

Product Code TEE-HS1001 MINI  
\*\$966.16

Designed specifically for smaller and miniature ponies.

Features include:

- Lightweight, only 8.6kgs
- Work height (Min 760mm, Max 1070mm)
- Choice of *Cradle* or *Standard* head rest
- Replacement parts readily available



Head Stand in folded position



Made in Australia by The Edge Equine

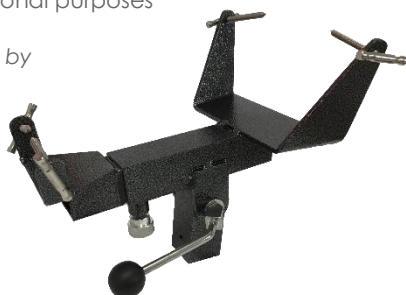


## Cadaver Attachment

Product Code  
TEE-HS1001\_7  
\*\$486.10

Sturdy holder for cadaver heads used for educational purposes

Made in Australia by  
The Edge Equine



## Radiography Adapter

Product Code  
TEE-HSRA  
\*\$65.00



- Allows you to quickly and easily convert your conventional head stand into one which holds a multitude of x-ray options.
- To suit 'The Edge Equine' Head Stand
- Powder coated aluminium



Made in Australia by  
The Edge Equine



- Strong yet lightweight
- Quality Biothane straps
- Sturdy, soft, reinforced chin support
- Quality ropes and cleats  
(replacement rope available separately)

Made in Australia by  
The Edge Equine



## Radiography Attachments



Enables hands-free use, taking:

- Latero-medial
- Dorsal-ventral
- Several projections
- Offset imaging

3D adjustable cassette holder  
Available for every CR cassette or DR plate



CR-Dentalbox

DR-Dentalbox



- Protection box, front and back side from 6mm Polycarbonate, for intraoral X-rays of the incisors and canines
- Mountable 400mm long handle which can be rotated 360° minimising radiation exposure to the assistant

- Offsets the lower jaw to left or right for open mouth views
- Easy to use
- Great to investigate the roots and occlusion surface of the cheek teeth
- The Dorso-Ventral views can be made with 5cm offset to the left and right
- Comes with Biothane strap and metal buckle - fits all sizes from Shetland to Shire!

Designed, tested and approved in collaboration with European Equine Dental Consultancy by Dr Julius W.E. Peters

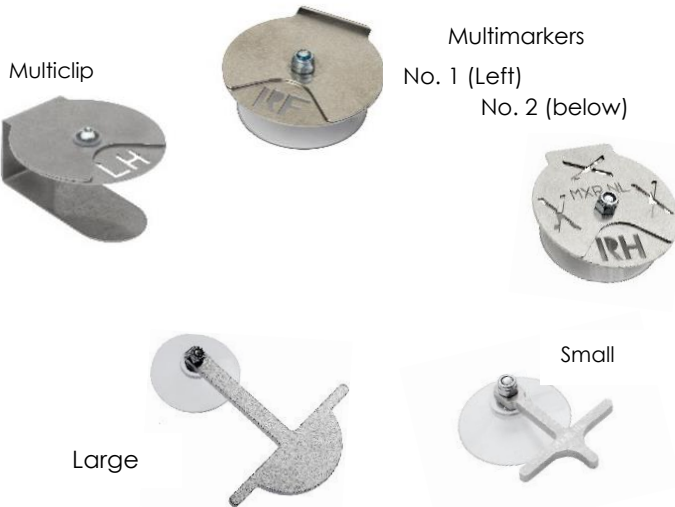


X-Ray Clips and Markers



"Sarah" Marker

- For head x-rays and easy mounting to ascertain the horizontal plane
- Double L&R marker
- Multi-functional with suction device



Multiclips / Multimarkers

Stainless steel all in one markers with suction cups

Buckymarker

Markers with suction cups for your cassette holder to provide information about the horizontal plane



X-Ray Clips

Stainless steel clip for analogue and CR-Cassettes

# Charting & Education

## DENTAL CHARTS / INVOICES

**Equine Dental Chart**

Date \_\_\_\_\_  
 Owner/Trainer \_\_\_\_\_  
 Address \_\_\_\_\_  
 City \_\_\_\_\_ State \_\_\_\_\_ Zip \_\_\_\_\_  
 Phone \_\_\_\_\_  
 Horse \_\_\_\_\_  
 Age \_\_\_\_\_ Sex \_\_\_\_\_ Breed \_\_\_\_\_

History \_\_\_\_\_  
 Exam \_\_\_\_\_  
 Recommendations \_\_\_\_\_  
 Sedation Notes \_\_\_\_\_

Services	Molars	Canines	Incisors
Call Fee \$ _____	Float \$ _____	Reduction \$ _____	Reduction \$ _____
Exam \$ _____	Bit Seats \$ _____	Tarter \$ _____	Realign \$ _____
Consult \$ _____	Ramps \$ _____		Extractions:
Sedation \$ _____	Waves \$ _____	Wolf Teeth	Caps \$ _____
Repeat \$ _____	Steps \$ _____	Extraction \$ _____	Fragment \$ _____
Sedation 1 \$ _____	Ridges \$ _____		Decayed \$ _____
#2 \$ _____	Hooks \$ _____	Sub Total \$ _____	Sub Total \$ _____
IV Bute \$ _____	Extractions:		
Sheath \$ _____	Caps \$ _____		
Cleaning \$ _____	Fragment \$ _____		
Tetanus \$ _____	Decayed \$ _____		
Services Total \$ _____	Sub Total \$ _____	Dentistry Total \$ _____	Visit Total \$ _____

Copyright 2000 by Equine Dental Instruments All Rights Reserved  
 Toll Free 1-877-912-7122

Equine Dental Instrument Dental Charts (pictured left)  
 VDP-0197150 (50 PER PKT)  
 \*\$22.25

This Equine Dental Chart shows three-dimensional tooth abnormalities.

**EQUINE DENTAL CHART**

Date \_\_\_\_\_ Practitioner \_\_\_\_\_  
 Owner/Trainer \_\_\_\_\_  
 Address \_\_\_\_\_  
 Home Phone \_\_\_\_\_ Work Phone \_\_\_\_\_  
 Horse \_\_\_\_\_ Age \_\_\_\_\_ Sex \_\_\_\_\_ Breed \_\_\_\_\_  
 Condition/Score \_\_\_\_\_ Barn \_\_\_\_\_ Stall # \_\_\_\_\_

History: \_\_\_\_\_  
 Exam: \_\_\_\_\_

1 = sharp points 1+ = very sharp points 2 = lacks lateral excursion 3 = TMJ sensitivity 4 = buccal laceration 5 = lingual laceration 6 = hooks 7 = ramps 8 = slip 9 = wear  
 10 = excessive transverse ridges 11 = cupped 12 = retained deciduous 13 = fragment 14 = unruptured 15 = abraded 16 = supernumerary 17 = injured 18 = decayed  
 19 = missing 20 = excessive wear 21 = diagonal incisors 22 = ventrally curved incisors 23 = overjet 24 = underjet 25 = overbite 26 = underbite 27 = involved teeth

Recommendations: \_\_\_\_\_

PRE MOLAR/MOLAR INTEROCCLUSAL SPACE		PRE MOLAR/MOLAR SURFACE ANGLE		ESTIMATED PERCENT OF MOLAR OCCLUSION	
RIGHT	LEFT	RIGHT	LEFT	RIGHT	LEFT
PRE INCISOR REDUCTION _____	PRE INCISOR REDUCTION _____	PRE FLOAT _____	PRE FLOAT _____	PRE FLOAT _____	PRE FLOAT _____
POST INCISOR REDUCTION _____	POST INCISOR REDUCTION _____	POST FLOAT _____	POST FLOAT _____	POST FLOAT _____	POST FLOAT _____

SERVICES	INCISORS	CANINES	MOLARS
Call Fee \$ _____	Procedure \$ _____	Procedure \$ _____	Procedure \$ _____
Exam \$ _____	Reduction \$ _____	Reduction \$ _____	Float \$ _____
Consult \$ _____	Realign \$ _____	Tarter \$ _____	Bit Seat \$ _____
Sedation \$ _____	Elevate \$ _____	Extract \$ _____	Hooks \$ _____
Repeat Sedation \$ _____	EXTRACTION \$ _____	Sub Total \$ _____	Ramps \$ _____
Sheath Cleaning \$ _____	Deciduous \$ _____		Waves \$ _____
	Fragment \$ _____		Ship \$ _____
	Decayed \$ _____		Ridges \$ _____
			Cupped \$ _____
Sub Total \$ _____	Sub Total \$ _____		

**WOLF TEETH**

Procedure	Fee
1 Extraction \$ _____	
Erupted \$ _____	
Unruptured \$ _____	
Fragment \$ _____	
Sub Total \$ _____	

**EXTRACTION**

Procedure	Fee
1 Deciduous \$ _____	
Fragment \$ _____	
Decayed \$ _____	
Sub Total \$ _____	

**TOTAL**

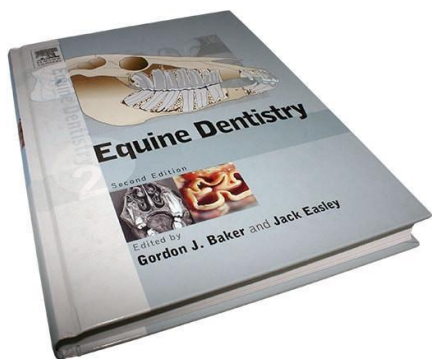
\$ \_\_\_\_\_

Equine Dental Invoice / Charts (pictured left)  
 VDP-0197520 (50 PER PKT)  
 \*\$29.60

Shows a front view of the mouth with a top view of each tooth to allow notation of tooth abnormalities in a three-dimensional view. Adequate room and many predefined categories to itemise billing. Carbonated and loose leaf.

## Equine Dentistry, 2<sup>nd</sup> edition

Product Code VDP-0195230  
 \*\$325.50



This comprehensive and definitive resource on equine dentistry has been completely updated to include the latest advances in morphology, dental disease and pathology, diagnosis of dental disorders, and equine dental techniques.

Editors:

Gordon J Baker - Emeritus Professor, Equine Medicine and Surgery, University of Illinois, USA

Jack Easley - Equine Veterinary Practitioner, Private Practice (with special emphasis on Equine Dentistry and Reproduction), Shelbyville KY, USA

Hardcover / 368 Pages

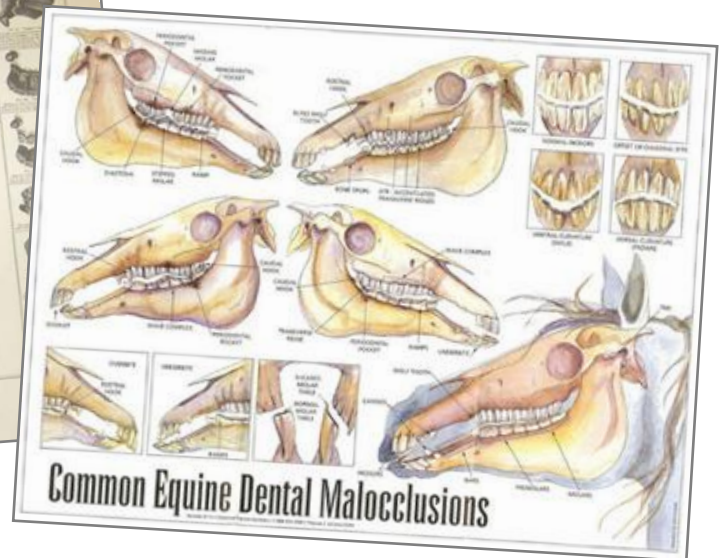
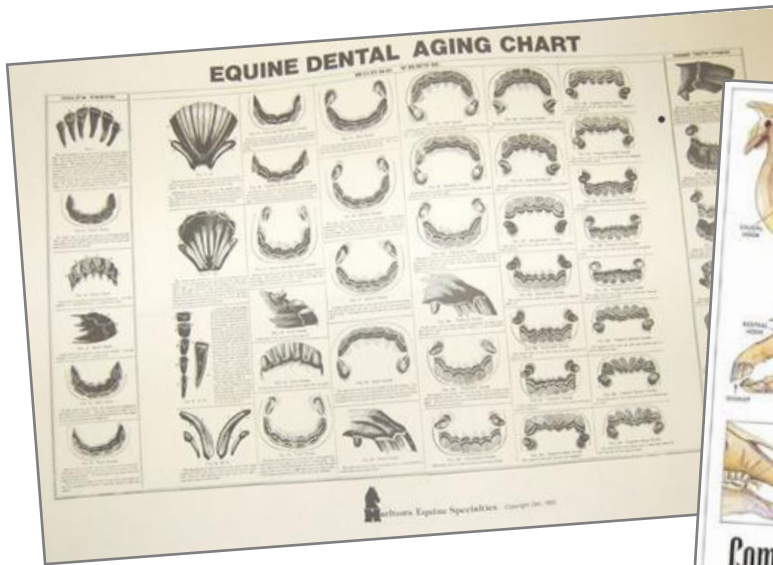
## Equine Dental Aging Chart

## Common Equine Dental Malocclusions

VDP-0197110 (Laminated) \*\$25.00

VDP-0197120 (WALL CHART) \*\$61.65

VDP-0197130 (FLIP CHART) \*\$85.80



## Equine Skull Models

Product Codes

Plastic ... VDP-0198010

Natural ... TJ-001

### Equine Skull Model & Teeth Model (Plastic)

\*\$745.95

- Ideal for client education
- Removable and replaceable teeth that depict many forms of dental malocclusion and other dental abnormalities
- Skull replica is of actual size. Teeth are life size and mirror the hardness of equine teeth
- Moulded skull with teeth which are functionally similar to real teeth
- Ideal method of training staff to refine techniques



Replacement Teeth for Plastic Skull  
Product Code VDP-0198015  
\*\$88.76



### Natural Horse Skulls

\$POA



- Professionally prepared by qualified veterinarian specialist
- Other species (cow, deer, alpaca) also available upon request

**Note:** Due to bio-security restrictions, naturally prepared (real skulls) are only available for Australian clients.

# Hygiene / Cleaning & Safety Products



We now stock a wonderful range of cleaning and sanitising products. All products are made in Australia, eco friendly and commercial grade.

<b>Disinfectant Concentrate, 5L</b>	Product Code EXC-10 *\$83.60	<b>Surface Spray</b>	5L, Product Code EXC-16 *\$250.00 1L, Product Code EXC-11 *\$26.05
-------------------------------------	------------------------------------	----------------------	---

- Kills germs and imparts a fresh fragrance
- Powerful formula cleans as well as disinfects
- Commercial grade
- Eco friendly
- Citrus scented
- Size: 5 Litres



- Anti-bacterial (kills 99.9% germs, bacteria and viruses on hard or soft surfaces)
- Designed for door handles, hand rails, desk tops and much more
- Eliminates the source of mould allergens
- 70% Alcohol
- Eco friendly
- Made in Australia
- Sizes available: 5L & 1L



<b>Hand Cleaner Grit, Anti-bacterial</b>	20L, Product Code EXC-16 *\$250.00 5L, Product Code EXC-15 *\$63.65
--	--

- Formulation for cleaning the toughest grime and grease!
- Soothes and nourishes your skin, leaving your skin refreshed and clean
- Powerful anti-bacterial action - kills 99.9% germs
- Trusted robust cleaning and hygiene performance
- Eco friendly
- Made in Australia
- Lemon scented
- Sizes available: 20L & 5L



<b>Hand Cleaner Grit, Classic</b>	20L, Product Code EXC-18 *\$178.50 5L, Product Code EXC-17 *\$56.30
-----------------------------------	--

- Formulation for cleaning the toughest grime and grease!
- Soothes and nourishes your skin, leaving your skin refreshed and clean
- Trusted robust cleaning and hygiene performance
- Eco friendly
- Made in Australia
- Lemon scented
- Sizes available: 20L & 5L



## Hand Sanitiser Gel, Anti-bacterial

5L, Product Code EXC-09 \*\$156.45  
500ml, Product Code EXC-08 \*\$15.95

- 70% Alcohol
- Anti-bacterial - kills 99.9% germs
- Soothes and nourishes your skin
- Trusted robust cleaning and hygiene performance
- Citrus scented
- Pump bottle
- Eco friendly
- Made in Australia
- Sizes available: 5L & 500ml



## Hand Sanitiser Liquid, Anti-bacterial

5L, Product Code EXC-07 \*\$149.50  
1L, Product Code EXC-13 \*\$18.70  
250ml, Product Code EXC-06 \*\$17.65

- Non-alcohol
- Powerful anti-bacterial action (kills 99.9% germs)
- pH neutral
- Added moisturisers
- Can be used to reduce bacteria and germs from hands without the use of water
- Trusted robust cleaning and hygiene performance
- Citrus scented
- Eco friendly
- Made in Australia
- Sizes available: 5L, 1L & 250ml



## Hand Wash, Anti-bacterial

5L, Product Code EXC-03 \*\$67.20  
500ml, Product Code EXC-02 \*\$14.50

- Soothes and nourishes your skin
- Leaves your skin feeling refreshed and clean
- Powerful anti-bacterial action - kills 99.9% germs
- Trusted robust cleaning and hygiene performance
- Lemon scented
- Eco friendly
- Made in Australia
- Sizes available: 5L & 500ml



## Hand Wash, Classic

5L, Product Code EXC-05 \*\$49.35  
500ml, Product Code EXC-08 \*\$15.95

- 'Classic' formula
- Orange scented
- Soothes and nourishes your skin, leaving your skin refreshed and clean
- Trusted robust cleaning and hygiene performance
- Eco friendly
- Made in Australia
- Size: 5L & 500ml



## Dust / Mist Disposable Mask with Valve, P2V

Product Code  
HYSAFE-02  
\*\$4.50

## Safety Glasses, Clear Utility

Product Code  
SIG-01  
\*\$4.70



- Unique Ezi-breath valve system
- Lightweight design
- Allows clear vision
- Comfortable contoured fit
- Dual elastic headbands
- Clear breathing / speaking
- Nose bridge band easily adjustable for maximum sealing and versatile fit
- Maintenance free
- Soft foam nose seal
- **5% discount offered per box of 12!**



- Lightweight medium impact safety glasses
- Polycarbonate hard coat lens that is certified to AS/NZS 1337.1:2010



# Distribution & Sales

## Australia



### Head Sales Office

#### The Edge Equine Pty Ltd

61 Pratts Park Rd  
Bendigo, Victoria 3550  
AUSTRALIA  
P: +61 3 5449 3802  
E: enquiry@theedgeequine.com  
W: www.theedgeequine.com



Find us around the globe

## USA / North America



### Equine Dental Instruments

200 North Main St  
Elmwood, WI 54740  
USA  
P: +1 877 912 7122  
E: sales@equinedentalinstrument.com  
W: www.equinedentalinstruments.com

### Kelly's Equine Dental Equipment

257 Erie Ave  
Midland Park, NJ 07432  
USA  
P: +1 914 391 0758  
E: kellysequinetools@gmail.com  
W: www.kellysequinedentalinstruments.com

### Olsen E-Z Cuts

1420 Kennebec Road  
Hampden, ME 04444  
USA  
P: +1 207 862 6698  
E: olsenezcuts@aol.com  
W: www.olsenezcuts.com

### Jerry's Equine Dental Tools

7395 El Camino Real #405  
Atascadero, CA 93422  
USA  
P: +1 805 460 7276  
E: jerry@jerryseqdentistry.com  
W: www.equinedentaltools.com

## Japan



### EBM Trading Japan K.K.

1-52-16, Higashiasahina  
Kanazawa-Ward  
Yokohama-City 236-0033  
JAPAN  
P: +81 0 80 4364 4002  
E: h.echigo@ebmtrading.com  
W: www.ebmtrading.com

## New Zealand



### NZ Equine Dentistry Tools

1940 Te Ore Ore Bideford Road  
Bideford RD11  
Masterton Wairarapa 5871  
NEW ZEALAND  
P: +64 27 255 9085  
E: tools@horsebusiness.co.nz  
W: www.horsebusiness.co.nz

### Blue Mist Equine Veterinary Centre

179 Franklin RD, RD2  
Waihi 3682  
NEW ZEALAND  
P: +64 7 863 9312  
E: liz@bmevc.co.nz  
W: www.bmevc.co.nz

### Veterinary Dental Supplies Ltd

194 Douds Road,  
Sefton RD 7  
Rangiora, North Canterbury 7477  
NEW ZEALAND  
P: +64 3 326 3155  
E: orders@dentalveterinarysupplies.com  
W: dentalveterinarysupplies.com

## UK / Europe



### VDP Europe

Merlin Way  
Bowerhill Industrial Estate  
Melksham, Wiltshire SN12 6TJ  
ENGLAND  
P: +44 7734 393 757  
O: 0 1225 436 350  
E: lanH@maianimalhealth.com  
W: www.vdpeurope.com

### Equine Blades Direct Ltd

Ashgrove Farm  
Sand, Wedmore  
Somerset BS28 4XF  
UNITED KINGDOM  
P: +44 01934 710 780  
E: info@equinebladesdirect.com  
W: www.equinebladesdirect.com

# Wishlist / Notes

---

---

---



Issue 1, 2023



**THE EDGE EQUINE**  
SERVICING THE GLOBE'S LEADING  
EQUINE DENTAL PROVIDERS



[www.theedgeequine.com](http://www.theedgeequine.com)