



atim cloud wireless™  
PRODUCT LINE

# ACW-MR2-EX

## ATEX metering/dry contacts

COUNTER • ATEX • IP65 • IoT CLOUD • AMR

### Network



Sigfox™



LoRaWan®\*



Sigfox ACW-GW repeater compatible

### Performances



Range : up to 15km

### Autonomy



8 years with 3 Tx/day



One LS14500Ex battery



Battery level indicator

### Divers



Switch configuration



Downlink configuration



Waterproof IP65 box



Zone 2 environment



Web platform



SMS and Mails Alerts



The ACW-MR2-EX allows you to report two digital inputs towards a web platform or to **get remotely the index metering** informations from a **gas** counter done on a regular basis (configurable reports time).

This modem exists with 2 digital inputs intended to work on the new LPWAN networks dedicated to the IoT: Sigfox and LoRaWan. Ideal to supervise your equipment's on the web, It is perfectly adapted for an urban environment and to be used in a difficult environment.



ATIM Radiocommunications

Chemin des Guillets  
38250 Villard de Lans  
France

www.atim.com  
info@atim.com  
+33 4 76 95 50 65

ATIM\_ACW-MR2-EX\_DS\_EN\_V1.8



## Technical features

<b>Dimensions</b>	177 x 55 x 55 mm	
<b>Antenna</b>	Integrated (¼ wave)	
<b>Temperature</b>	-20°C à +55°C (functioning mode) -40°C à +70°C (storage mode)	
<b>Mounting</b>	Wall, tube, DIN-Rail	
<b>Box</b>	IP 65	
<b>Power supply</b>	1x LS14500Ex	
<b>Weight</b>	160 g	
<b>Frequency</b>	865 – 870 MHz	
<b>Power</b>	25 mW (14 dBm) Sigfox : 100 bps LoRaWan : 300 bit/s to 10 Kbit/s	
<b>Speed</b>		
<b>Consumption</b>	Sigfox	LoRaWan
<b>Tx mode</b>	60 mA	60 mA
<b>Rx mode</b>	35 mA	35 mA
<b>Sleep mode</b>	1,4 µA	5 µA
<b>Certification</b>	CE/<E> II 3 G, Ex ic IIA T3 Gc @ 55°C	

## References

2 pulse counters + 1 “cable cut” :

- ACW/SF8-MR2-EX  
Sigfox
- ACW/LW8-MR2-EX  
LoRaWan

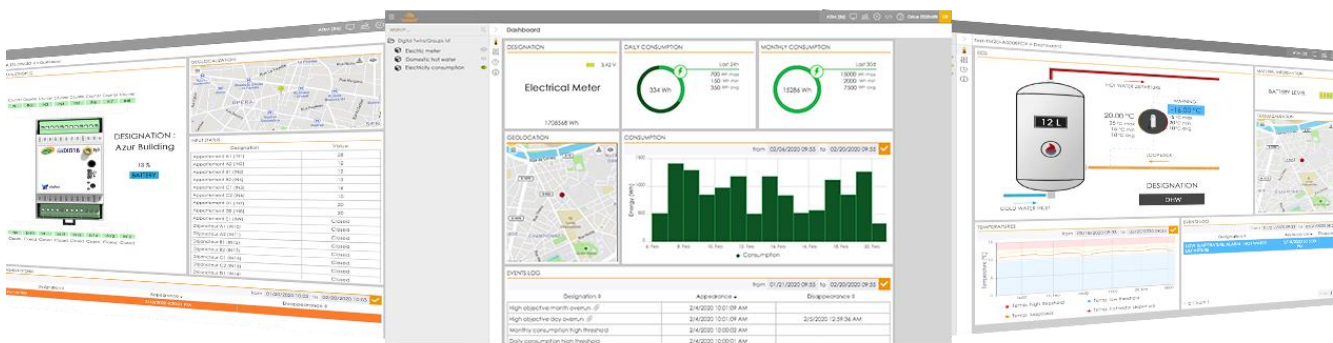
Gaz meter cable :

- CAB/MTRGAZ1  
M16 connector IP40

ATEX Lithium battery :

- BAT/MTRGAZ1  
LS14500EX battery

## ATIM Cloud Wireless™ Platform (option)



Control all your ATIM devices using Sigfox and LoRa on the same secured Web platform!

Manage and operate your IoT data very easily.

Thanks to new LPWAN networks, device remote management is simple and accessible to anyone.

- Managing the products by groups
- Real time visualisation
- Signal quality
- Mobile app
- Emails & SMS alerts
- Secured API
- Export your data
- On-call management
- Products geolocation
- Personalization: white label
- Downlinks



**ATIM Radiocommunications**

Chemin des Guilletes  
38250 Villard de Lans  
France

ATIM\_ACW-MR2-EX\_DS\_EN\_V1.8

www.atim.com  
info@atim.com  
+33 4 76 95 50 65

