



ACW-LW8-TST

Test – Network – LoRaWAN

Performances



Simplicity: 1 button, 1 LED,
test results in a few seconds

Autonomy



Rechargeable battery via
micro USB port



This tester enables you to accurately evaluate the LoRaWAN network coverage quality. A multicolored LED displays a color according to the coverage quality at your location. Test frames emitted by the push of the central button are visible on our ATIM ACW Platform, and on your national LoRaWAN operator's backend.

Very useful for discovering and mastering LPWAN technologies and the realization of "Proof of Concept".



ATIM Radiocommunications

Chemin des Guillets
38250 Villard de Lans
France

www.atim.com
info@atim.com
+33 4 76 95 50 65



Technical features

Dimensions	90 x 45 x 15 mm
Housing	Plastic
Power Supply	Internal LiPo Battery 325mAh, rechargeable via micro USB port (micro USB wire not included)
Weight	30g
Frequency	868 MHz
RF Power	25mW (14 dBm)

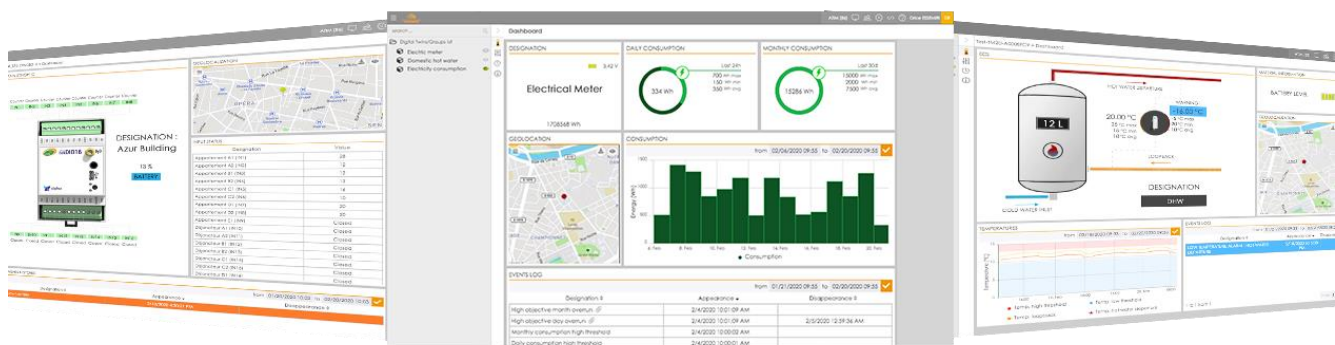
Reference

- ACW/LW8-TST
Version LoRaWAN
- ACW/SF8-TST
Version Sigfox

RSSI table

Excellent	Green	>-119 dBm
Good	Yellow	from -120dBm to -135dBm
Low	Purple	≤ -136dBm
Null	Red	No network
	White	Waiting network feedback (downlink)

ATIM Cloud Wireless™ Platform (option)



Control all your ATIM devices using Sigfox and LoRa on the same secured Web platform!
Manage and operate your IoT data very easily.
Thanks to new LPWAN networks, device remote management is simple and accessible to anyone.

- Managing the products by groups
- Emails & SMS alerts
- Products geolocation
- Real time visualisation
- Secured API
- Personalization: white label
- Signal quality
- Export your data
- Downlinks
- Mobile app
- On-call management



ATIM Radiocommunications

Chemin des Guillets
38250 Villard de Lans
France

www.atim.com
info@atim.com
+33 4 76 95 50 65

