

# ACW-GW Sigfox/868 Repeater

INDOOR • ALERT • INDUSTRIES

## Networks



Sigfox™



Local Modbus

## Performances



Range: up to 15km

## Power supply



External power 10-30Vcc

## Various



Configuration by USB



SMS & Emails alerts



Web platform



The **ACW-GW** radio modem is a repeater that allows radio message reporting from an 868MHz to the Sigfox network.

Connect to Sigfox any type of ACW sensor through this repeater. All data is accessible on the Atim Cloud Wireless web platform.



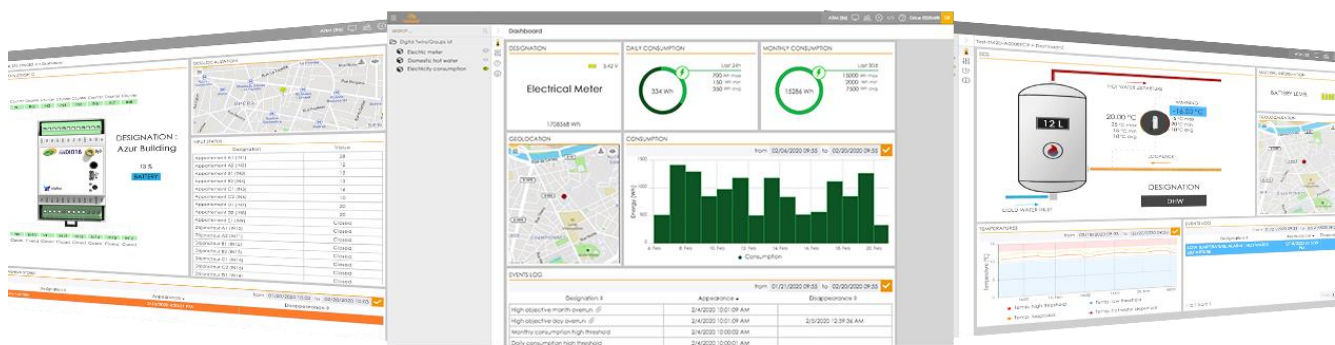
## Technical features

<b>Dimensions</b>	90 x 52 x 17,9 mm
<b>Weight</b>	50g
<b>Antenna</b>	External antenne (SMA connector)
<b>Temperature</b>	-20°C à +55°C (operating mode) -40°C à +70°C (storage mode)
<b>Fixation</b>	DIN Rail
<b>Power supply</b>	10-30Vcc
<b>Frequency</b>	865 – 870 MHz
<b>Power</b>	25 mW (14 dBm)
<b>Output</b>	Local: 1.2 à 115 Kbit/s Sigfox: 100 bit/s
<b>Consumption</b>	30mA (Rx), 50mA (Tx)

## References

- ACW/SF8-GW  
*Sigfox version*
- ACW/868-GW  
*Local mode version*

## ATIM Cloud Wireless™ Platform (option)



Control all your ATIM devices using Sigfox and LoRa on the same secured Web platform!  
Manage and operate your IoT data very easily.  
Thanks to new LPWAN networks, device remote management is simple and accessible to anyone.

- |                                 |                     |                              |
|---------------------------------|---------------------|------------------------------|
| Managing the products by groups | Emails & SMS alerts | Products geolocation         |
| Real time visualisation         | Secured API         | Personalization: white label |
| Signal quality                  | Export your data    | Downlinks                    |
| Mobile app                      | On-call management  |                              |



**ATIM Radiocommunications**

Chemin des Guillettes  
38250 Villard de Lans  
France

www.atim.com  
info@atim.com  
+33 4 76 95 50 65

