

ACW-DIND21


Digital Inputs/Outputs, Metering

MONITORING & CONTROLLING INDUSTRIAL EQUIPMENT

Networks

-  Sigfox™
-  LoRaWan®
-  Compatible with ACW-GW Sigfox repeater





Performances

-  High radio sensitivity

Autonomy

-  External power supply 10-30Vdc

Divers

-  Configuration by USB
-  Configuration downlink
-  SMS & Emails alerts
-  Web platform (option)



Class 0



Class A & C

The **ACW-DIND21** is an Industrial Internet of Things (IIoT) device in DIN format ready to be installed in an electrical box for the purpose of monitoring it. The 2 inputs can be configured as dry contact input or as counting. The digital output allows controlling equipment or restarting remotely from the network.

This product can be used in different use case:

- Control and monitoring of equipment (electrical cabinets, generators, air compressors, etc.)
- Intrusion detection (replacement of old alarms)
- Control and restart of remote equipment (pumps, motors, valves, etc ...).



ATIM Radiocommunications

Chemin des Guillets
38250 Villard de Lans
France

www.atim.com
info@atim.com
+33 4 76 95 50 65



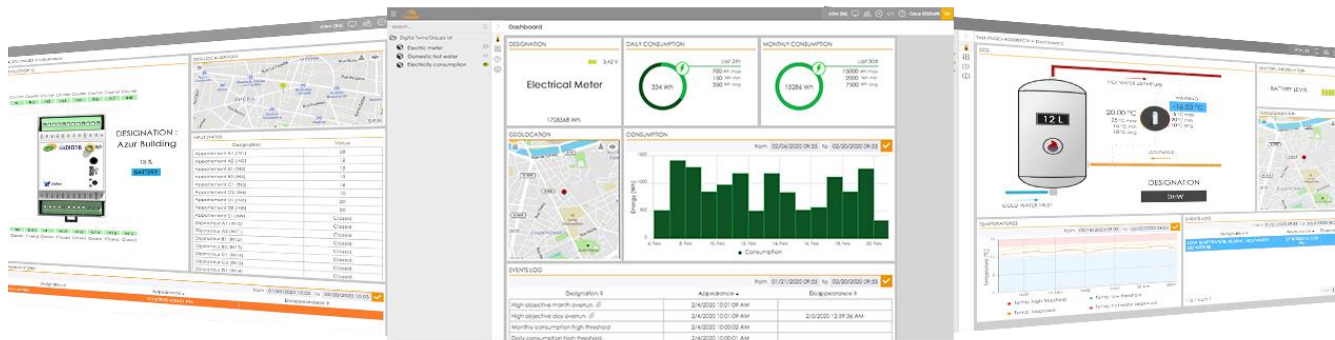
Technical features

Dimensions	90 x 57 x 17,9 mm
Antenna	External (SMA connector)
Temperature	-20°C to +55°C (operation) -40°C to +70°C (storage)
Mount	DIN rail compliant
Power supply	External 10-30Vcc
Weight	50 g
Frequency	865 – 870 MHz
Power	25 mW (14 dBm)

References

- ACW/SF8-DIND21
Version Sigfox
- ACW/LW8-DIND21
Version LoRaWAN

ATIM Cloud Wireless™ Platform (option)



Control all your ATIM devices using Sigfox and LoRa on the same secured Web platform!
Manage and operate your IoT data very easily.
Thanks to new LPWAN networks, device remote management is simple and accessible to anyone.

- Managing the products by groups
- Real time visualisation
- Signal quality
- Mobile app
- Emails & SMS alerts
- Secured API
- Export your data
- On-call management
- Products geolocation
- Personalization: white label
- Downlinks



ATIM Radiocommunications

Chemin des Guilletes
38250 Villard de Lans
France

www.atim.com
info@atim.com
+33 4 76 95 50 65

