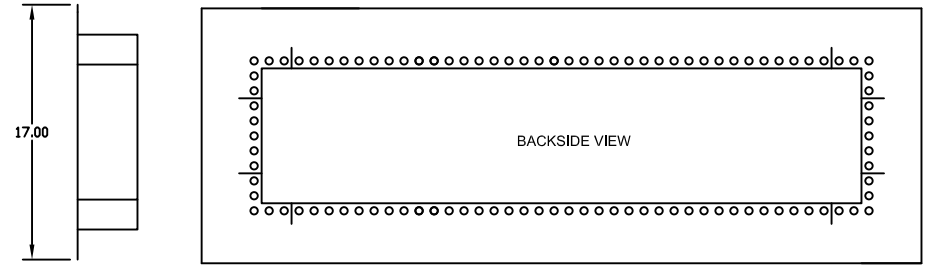
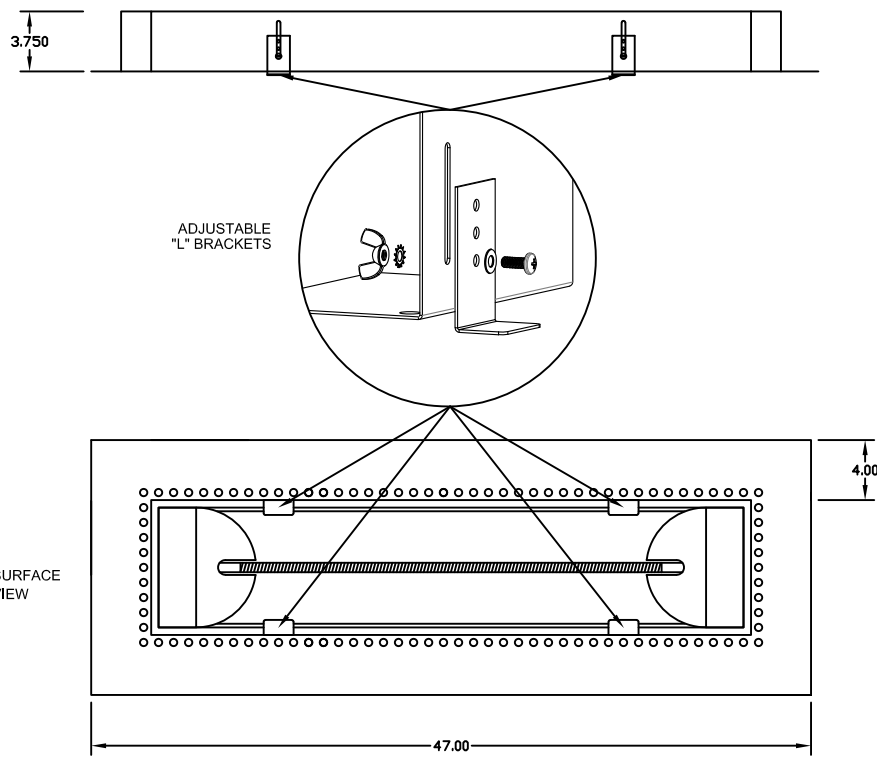
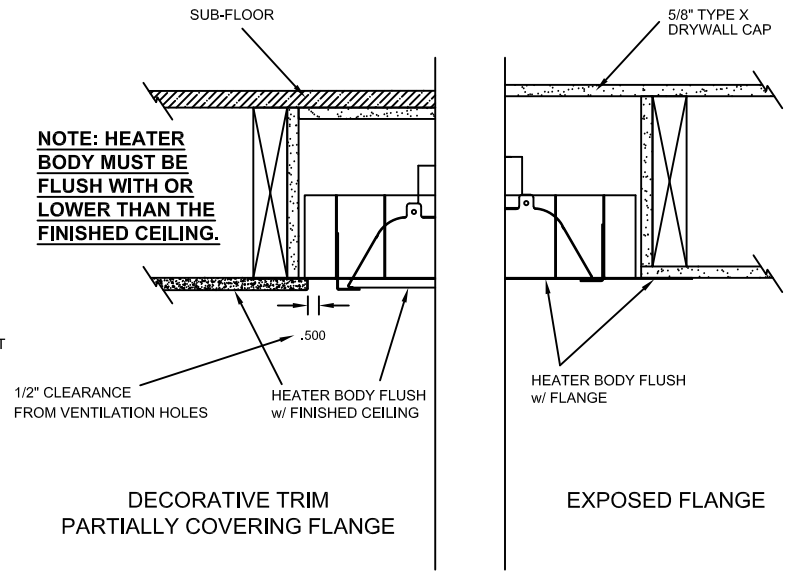
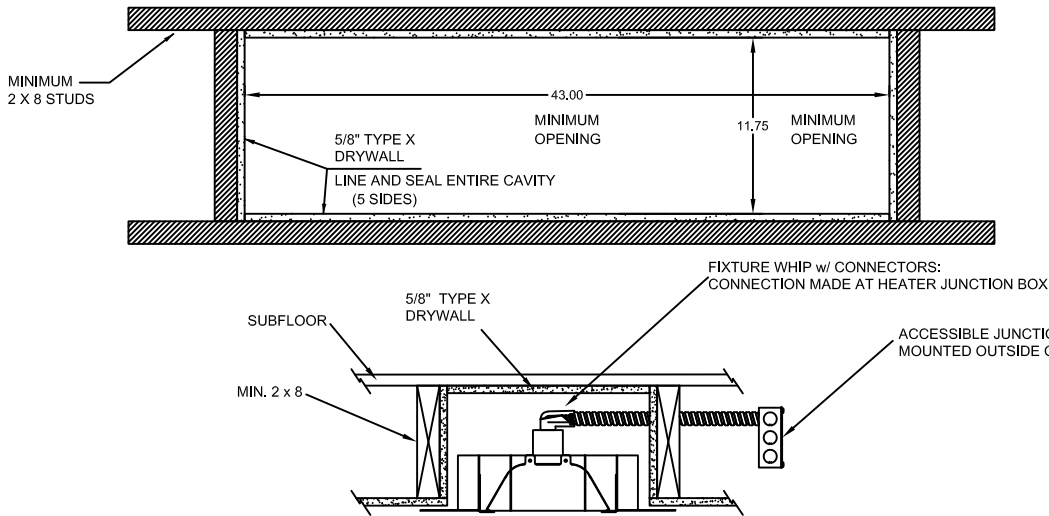


INSTALLATION TYPES



WARNINGS:

- Do not use Surface Mount Brackets.
- This Frame is ONLY to be used on a flat non-sloped ceiling.
- Heater Body must face straight down and be flush with the finished ceiling.
- Frame and Heater cannot be installed on a pitched angle.
- Accessible Junction Box must be installed outside of sealed drywall pocket.
- Must use 5/8" type "X" drywall.
- Must use supplied 4 foot Hi-Temp Fixture Whip and Hi-Temp Ceramic Wire Nuts.
- Please contact factory for longer length Hi-Temp Fixture Whips available for purchase. Discard Surface Mounting Brackets provided with Heater and use "L" Brackets.
- Use Licensed Electrician ONLY.

NOTES:

- Heater suspends (Gravity) by resting on adjustable "L" Brackets in flush mount fixture.
- Mounting holes on Surface Flange to be determined and drilled by Contractor/Installer.
- Coil excess flex into heater cavity.

INFRA TECH™ www.infratech-usa.com		15700 S. Figueroa St. Gardena, California 90248 Phone: (310) 354-1250 Fax: (310) 523-3674
ITEM #:	18-2300	MATERIAL: 304 S.S. #4 FINISH
DESCRIPTION:	W-39 FLUSH MOUNT FRAME (FOR USE WITH 39" HEATERS)	
NOTES:	SUPPLIED w/ HI-TEMP FIXTURE WHIP	
DATE:	SCALE:	DRAWN BY:
Dec. 16, 2019	N/A	CL