

Roof Rack Mount – Installation Instructions

General: Upon receipt thoroughly inspect all items to check for any damage to the provided hardware. If hardware is damaged, do not install or use product and instead immediately contact Zarges, Inc. at info@zargesusa.com or 800-357-6285. You may need to provide photos and explanations of damage. For technical questions, please contact 800-357-6285.

WARNING! READ ALL SAFETY WARNINGS AND INSTRUCTIONS. Failure to follow the warnings and instructions may result in injury. Save all warnings and instructions for future reference.

WARNING! TO PREVENT SERIOUS INJURY DURING INSTALLATION:

Park vehicle on a flat, level, hard surface away from traffic. Place transmission in park/neutral and set parking brake.

PLEASE READ THE FOLLOWING CAREFULLY: THE MANUFACTURER HAS PROVIDED THE PARTS LIST AND ASSEMBLY DIAGRAM IN THIS DOCUMENT AS A REFERENCE TOOL ONLY. THE MANUFACTURER EXPRESSLY STATES THAT ALL REPAIRS AND PARTS REPLACEMENTS SHOULD BE UNDERTAKEN BY ZARGES, INC. AND NOT BY THE BUYER. THE BUYER ASSUMES ALL RISK AND LIABILITY ARISING OUT OF BUYER’S REPAIRS TO THE ORIGINAL PRODUCT OR REPLACEMENT PARTS THERETO OR ARISING OUT OF BUYER’S INSTALLATION OF REPLACEMENT PARTS THERETO.

1. Hardware Components | See Figure 1.

- A.** MM-CARR #6610K54 | Safety Adjustable-Position Handle
 - QUANTITY 1 PC PER EACH MOUNT
- B.** MM-CARR #93237A106 | 316 Stainless Steel Spring Lock Washer
 - QUANTITY 1 PC PER EACH MOUNT
- C.** MM-CARR #95211A180 | 316 Stainless Steel Oversized Washer
 - QUANTITY 1 PC PER EACH MOUNT
- D.** Zarges Inc. Roof Rack Mount
 - QUANTITY 1 PC PER EACH MOUNT
- E.** MM-CARR #93635A314 | 316 Stainless Steel Hex Head Screw
 - QUANTITY 1 PC PER EACH MOUNT

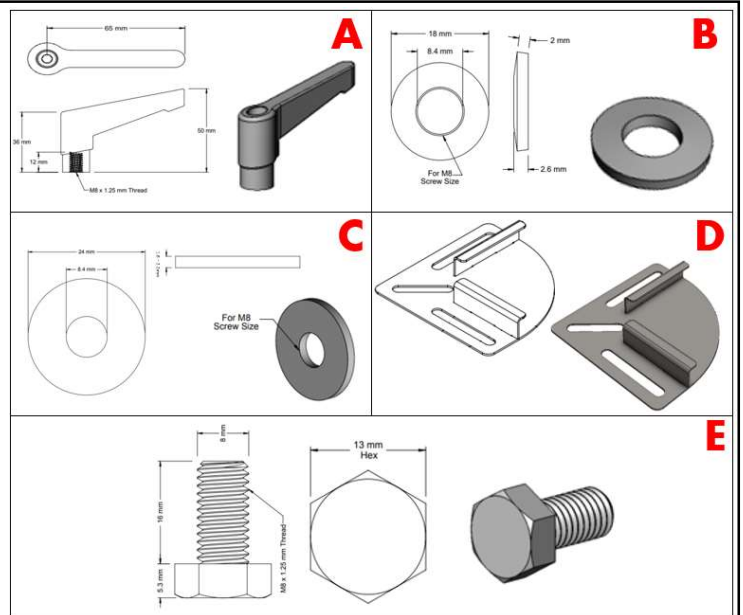


Fig. 1

2. Step by Step installation |

- a. 316 Stainless Steel Hex Head Screw(E) should be inserted within the allotted “SLOT” within Roof Rack, large head down within “SLOT”.
- b. Zarges Roof Rack Mount(D) to be inserted into position, with 316 Stainless Steel Hex Head Screw(E) protruding through.
- c. 316 Stainless Steel Oversized Washer(C) to be placed on 316 Stainless Steel Hex Head Screw(E).
- d. 316 Stainless Steel Spring Lock Washer(B) to be placed on top of 316 Stainless Steel Oversized Washer(C), beveled side “upwards”.
- e. Slide components into position, with the Zarges Roof Rack Mount(D) wedged into the corner of the case (see Figure 3).
- f. Safety Adjustable-Position Handle(A) screwed onto 316 Stainless Steel Hex Head Screw(E), with all components in between.
 - i. Press down to tighten, release to spin freely.
- g. Repeat steps 2a – 2f for each mount, until the case is securely mounted.

3. Installation & Orientation of Components | See Figure 2 & 3.

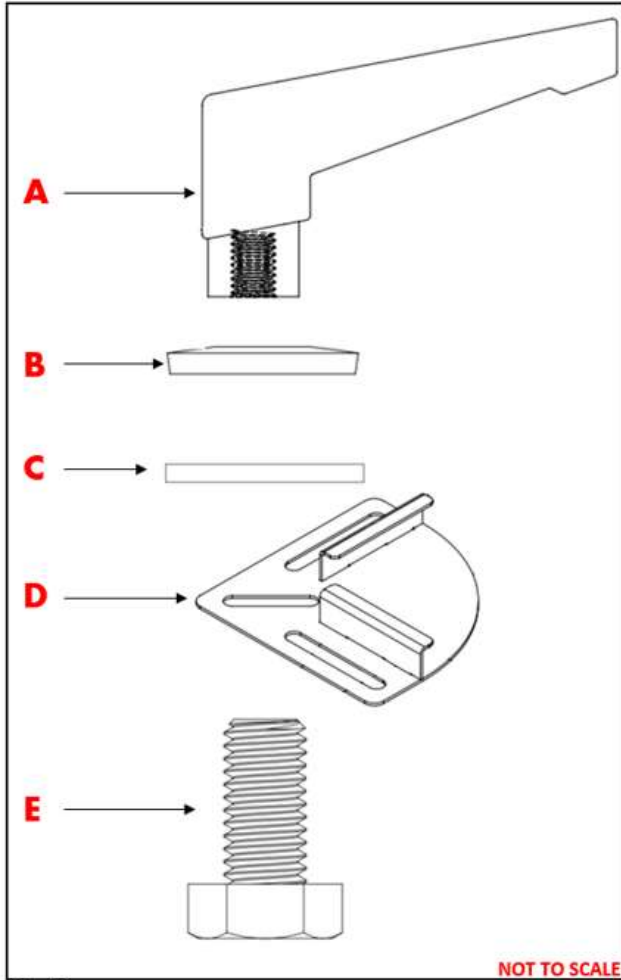


Fig. 2



Fig. 3

USE PRECAUTIONS

1. Do not exceed rated weight capacity of Roof Rack, distributed evenly. Be aware of shifting! Sudden load movement may briefly create excess load causing failure to your roof rack and/or product.
2. Do not exceed rated weight capacity of vehicle roof. Refer to vehicle's Gross Vehicle Weight Rating.
3. Follow your Roof Rack manufacturer's safety instructions and guidance for Roof Rack usage, including but not limited to: properly distributing weight, securing the load against slipping, and never carrying a load that is wider than the vehicle.
4. Before each use, check all mounting connections and connections of the roof bars and all other supports for a proper fit and tighten if required.
5. Only use as intended.
6. Inspect before every use; Do not use if parts become loose or damaged.
7. For maintenance, wipe external surfaces with clean cloth.
9. This product and its components are not a toy. Do not allow children to play with or near the items.

LIMITED WARRANTY ON [ROOF RACK MOUNTS]

THIS LIMITED WARRANTY GIVES YOU SPECIFIC LEGAL RIGHTS AND YOU MAY ALSO HAVE OTHER RIGHTS, WHICH VARY FROM STATE TO STATE. THE LIMITED WARRANTY CAN ALSO BE FOUND ONLINE AT [WWW.ZARGESUSA.COM/WARRANTY] [OR/AND] IN THE DOCUMENTATION WE PROVIDE WITH THE PRODUCT.

ZARGES PRODUCTS ARE MANUFACTURED, TESTED, AND INSPECTED IN ACCORDANCE WITH SPECIFIC ENGINEERING REQUIREMENTS. WE WARRANT THAT DURING THE WARRANTY PERIOD, THE PRODUCT WILL BE FREE FROM DEFECTS IN MATERIALS AND WORKMANSHIP. WE LIMIT THE DURATION AND REMEDIES OF ALL IMPLIED WARRANTIES, INCLUDING WITHOUT LIMITATION THE WARRANTIES OF MERCHANTABILITY AND FITNESS FOR A PARTICULAR PURPOSE TO THE DURATION OF THIS EXPRESS LIMITED WARRANTY.

SOME STATES DO NOT ALLOW LIMITATIONS ON HOW LONG AN IMPLIED WARRANTY LASTS, SO THE ABOVE LIMITATION MAY NOT APPLY TO YOU.

OUR RESPONSIBILITY FOR DEFECTIVE GOODS IS LIMITED TO REPAIR OR REPLACEMENT AS DESCRIBED BELOW IN THIS WARRANTY STATEMENT.

WHO MAY USE THIS WARRANTY?

ZARGES, Inc., located at address 1440 Center Park Drive, Charlotte, NC 28217 ("we") extends this limited warranty only to the consumer who originally purchased the product ("you"). It does not extend to any subsequent owner or other transferee of the product.

WHAT DOES THIS WARRANTY COVER?

This limited warranty covers defects in materials and workmanship of the [ROOF RACK MOUNTS] (the "**product**") for the Warranty Period as defined below.

WHAT DOES THIS WARRANTY NOT COVER?

This limited warranty does not cover any damage due to: (a) transportation; (b) storage; (c) improper use; (d) failure to follow the product instructions or to perform any preventive maintenance; (e) modifications; (f) unauthorized repair; (g) normal wear and tear; or (h) external causes such as accidents, abuse, or other actions or events beyond our reasonable control. This limited warranty does not cover non-standard products, products which have been customized in any way by Zarges or any third party.

WHAT IS THE PERIOD OF COVERAGE?

This limited warranty starts on the date of your purchase and lasts for one year (the "**Warranty Period**"). The Warranty Period is not extended if we repair or replace the product. We may change the availability of this limited warranty at our discretion, but any changes will not be retroactive.

WHAT ARE YOUR REMEDIES UNDER THIS WARRANTY?

With respect to any defective product during the Warranty Period, we will, in our sole discretion, either repair or replace such product (or the defective part) free of charge.

HOW DO YOU OBTAIN WARRANTY SERVICE?

To obtain warranty service, you must call (800) 357-6285 or email our Customer Service Department at info@zargesusa.com during the Warranty Period to obtain a Return Authorization ("**RA**") number. No warranty service will be provided without an RA number. Once you have an RA number, you are responsible for payment of all warranty-service freight or shipping costs.

LIMITATION OF LIABILITY

THE REMEDIES DESCRIBED ABOVE ARE YOUR SOLE AND EXCLUSIVE REMEDIES AND OUR ENTIRE LIABILITY FOR ANY BREACH OF THIS LIMITED WARRANTY. OUR LIABILITY SHALL UNDER NO CIRCUMSTANCES EXCEED THE ACTUAL AMOUNT PAID BY YOU FOR THE DEFECTIVE PRODUCT, NOR SHALL WE UNDER ANY CIRCUMSTANCES BE LIABLE FOR ANY CONSEQUENTIAL, INCIDENTAL, SPECIAL OR PUNITIVE DAMAGES OR LOSSES, WHETHER DIRECT OR INDIRECT.

SOME STATES DO NOT ALLOW THE EXCLUSION OR LIMITATION OF INCIDENTAL OR CONSEQUENTIAL DAMAGES, SO THE ABOVE LIMITATION OR EXCLUSION MAY NOT APPLY TO YOU.