



Lifecycle of A Honey Bee Activity



Activity: Learn about the lifecycle of a honey bee

Purpose: Foster connection and curiosity for the natural world, as well as develop an impression of sequencing and the passage of time.

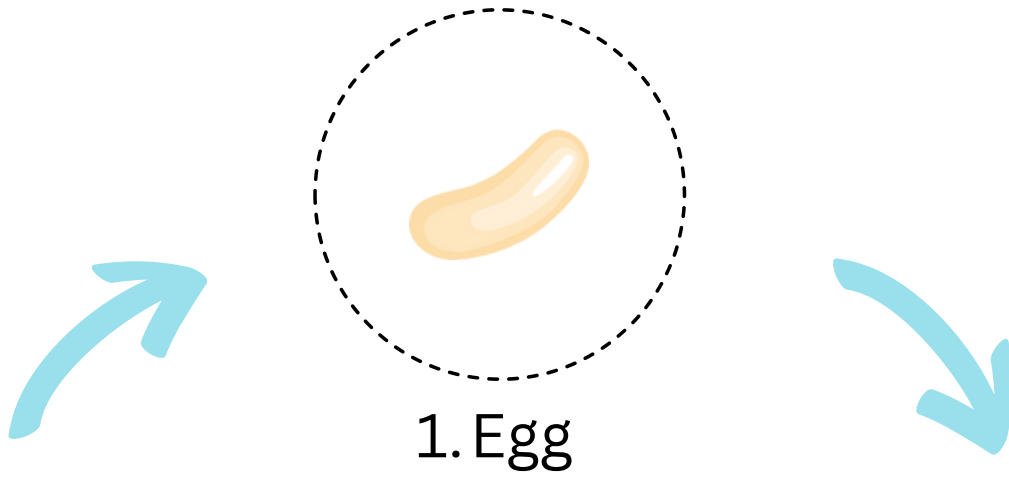
Recommended age: 3.5+

Instructions:

1. Print pages 2 and 3. Cut out the circles at the bottom of page 3, the different stages of the lifecycle.
2. Place the circles into the lifecycle on page 3.
3. Offer the control sheet (page 2) so the child can check their work.
4. Talk about the lifecycle facts on pages 4 -6.

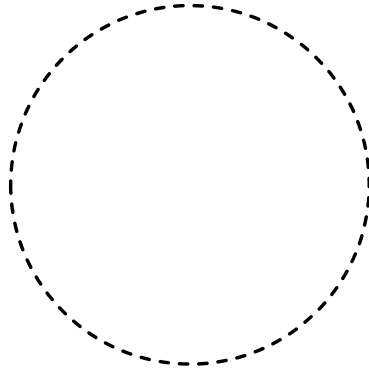


Lifecycle of A Honey Bee

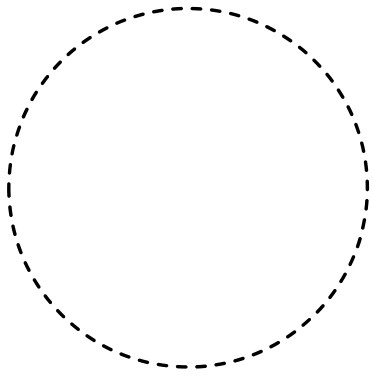




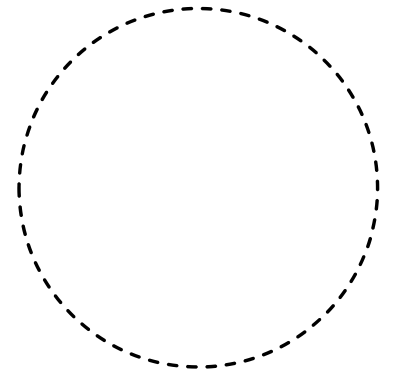
Lifecycle of A Honey Bee



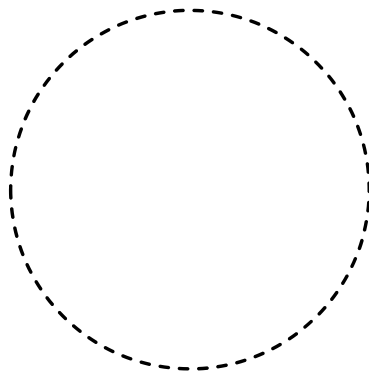
1. Egg



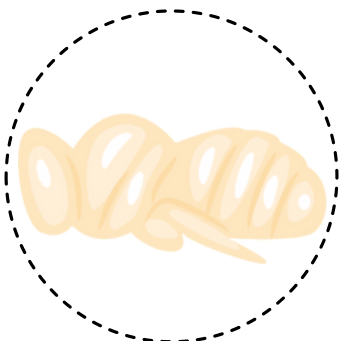
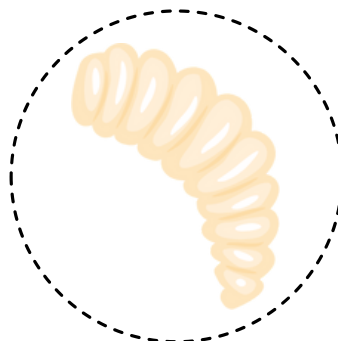
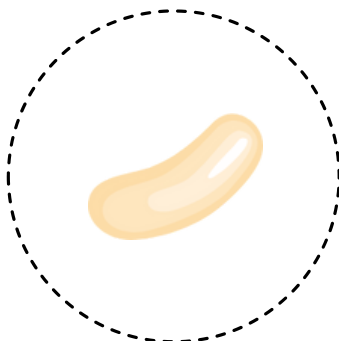
4. Adult



2. Larva

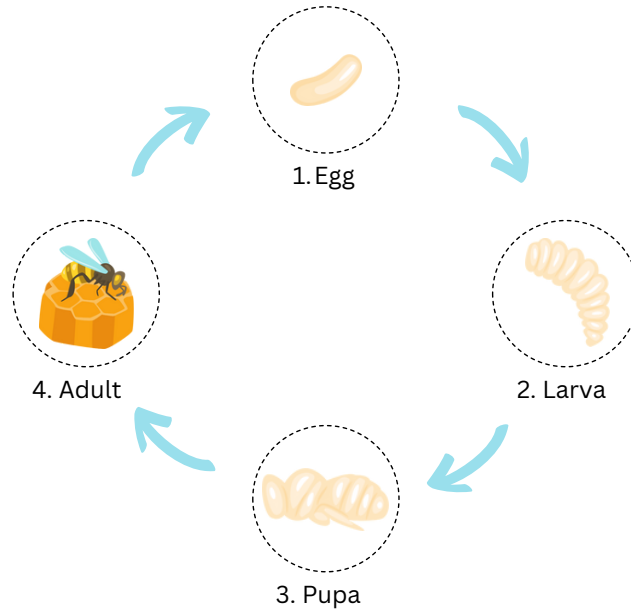


3. Pupa





Lifecycle of A Honey Bee Facts

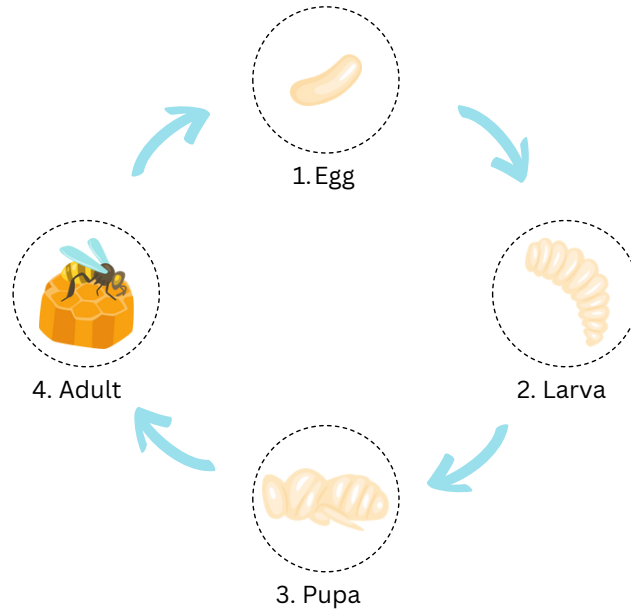


The life cycle of honeybees consists of four stages:

1. **Eggs** - A queen lays one egg per cell throughout the brood nest, which is located in the center of the hive.
2. **Larva** - After 3 days, an egg will hatch into a larva. Worker bees will feed and tend to the larvae as they grow. Once the larva is big enough, the worker bees will cover the cell with wax.
3. **Pupa** - once the cell is capped, the larva spins a cocoon around itself and develops a pupa (similar to how a butterfly spins a chrysalis). At this stage, the baby bee develops its eyes, legs, wings and other familiar body parts.
4. **Adult** - When it is ready, the bee will begin to chew through the cocoon and wax capping of its cell and emerge into the hive.

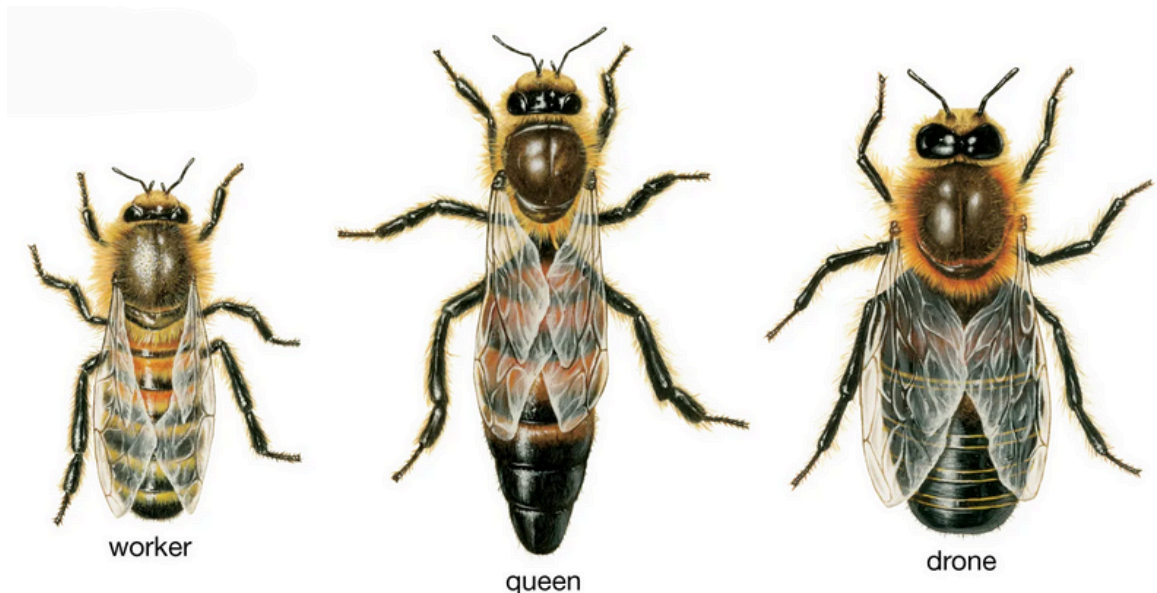


Lifecycle of A Honey Bee Facts



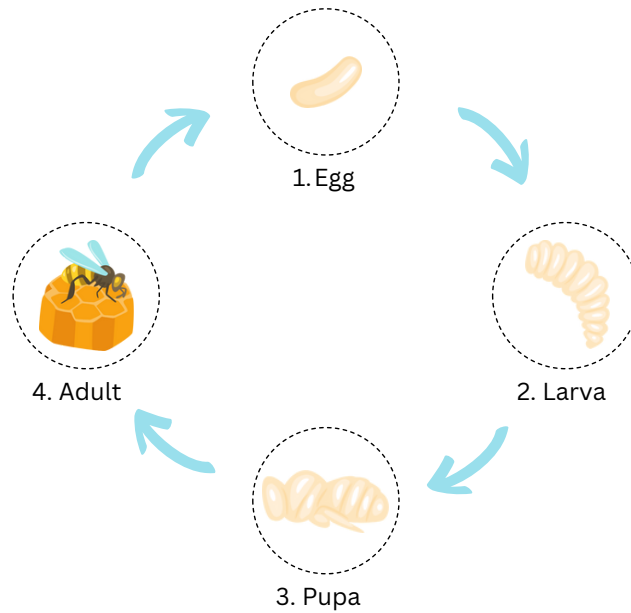
This length of the lifecycle varies depending on the type honey bee:

- **Queen Bee** - 16 days
- **Worker Bees** - 18 to 22 days
- **Drones** - 24 days for the drones





Lifecycle of A Honey Bee Facts



Roles of honey bees:

- **Queen bee** - the largest bee in the colony and the only female bee capable of laying eggs.
- **Drones** - a male honey bee whose job is to mate with the queen. Once a drone mates with a queen, it dies shortly after.
- **Worker bees** - keep the hive functioning. A young worker bee nurtures and feeds the bee larvae. They feed the queen and make the honey. An older work bee forages for resources like water, nectar, and pollen.