

## Wall Mounted & Floor Standing 51.2V 100Ah LiFePo4 Battery



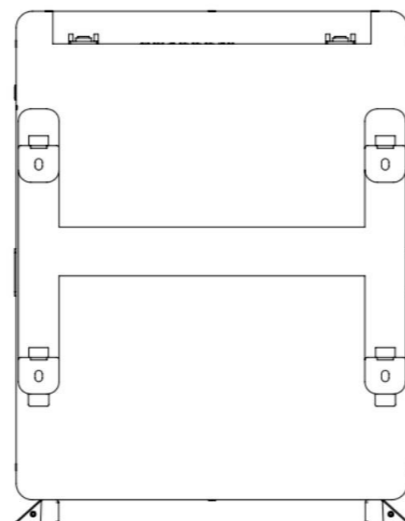
### Parameters

Product model	VOLTA STAGE 1
Product specification	51.2V 100Ah
Nominal voltage	51.2V
Nominal capacity	100Ah
Cell type	(LFP)
Charge Voltage	55.2V-56VDC
Max charge current	100A
Discharge cut-off voltage	44.8V
Max discharge current	100A
Parallels Function	Support 8 units in parallels
Communication interface	RS485, RS232, CAN(Optional)
Cycle life	≥ 6000 Cycles (80%DOD)
Charge temperature range	0~65°C
Discharge temperature range	-20~65°C
Colour	(Grey and white)
Dimensions	480*600*150MM
Weight	48Kg
Installation method	Wall mounted / Floor Stand
Warranty	5 Years

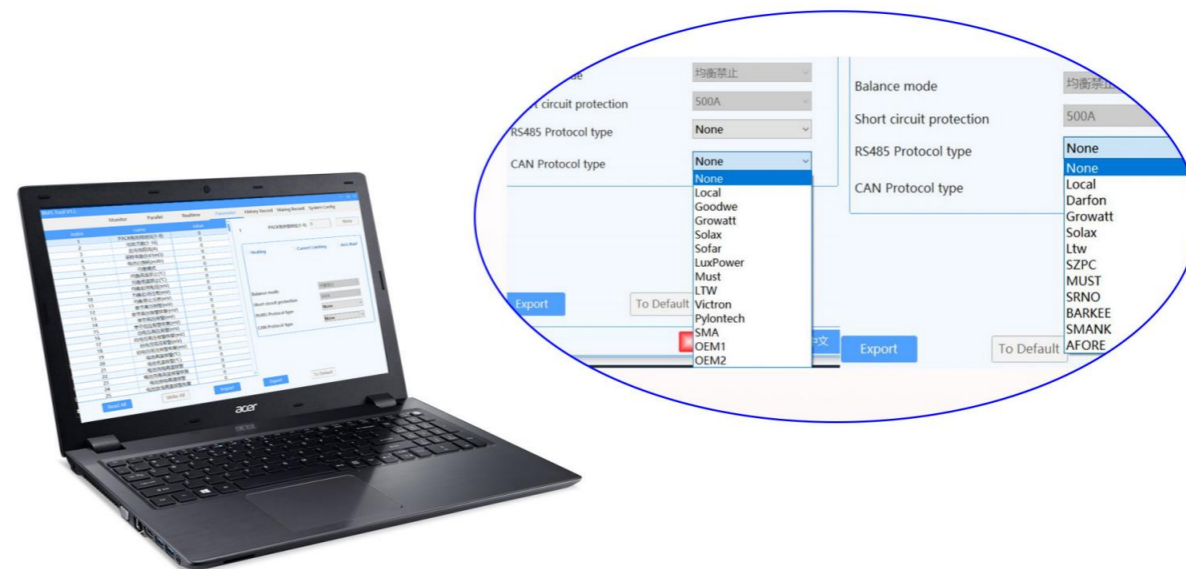
### Floor Mount With Detachable Floor Bracket



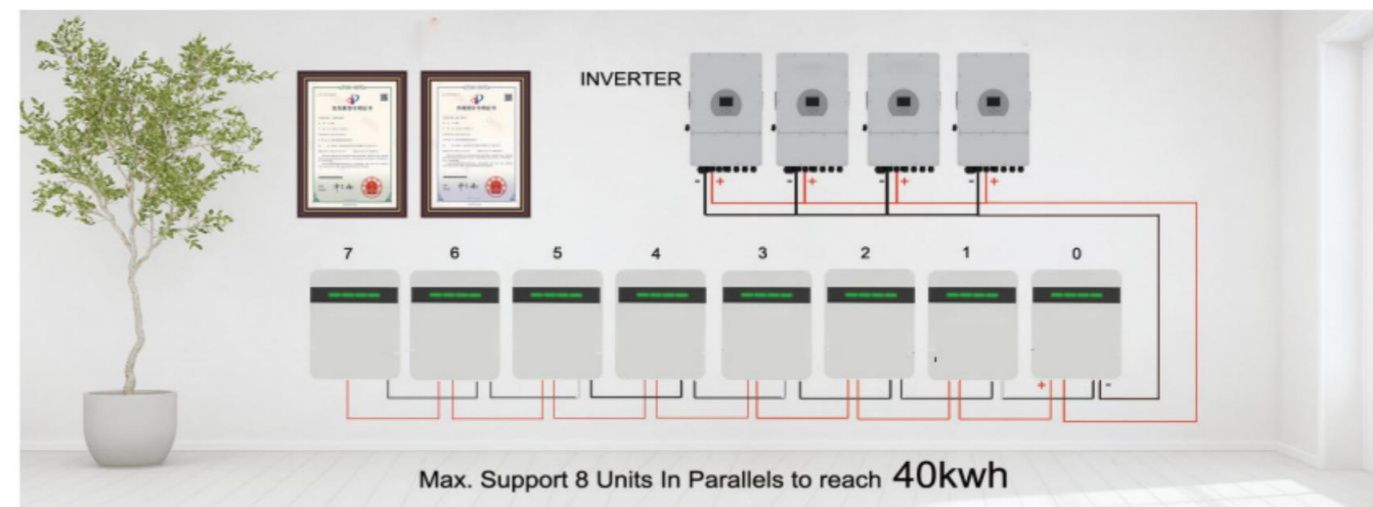
### Wall Mount With Wall Bracket



### With Multiple Built-in Inverters Communication Protocols



### Max 8 Units In Parallels To Achive 40KWH



### Compatible With Multiple Brands Inverters

