



## RCP Cockpit PRO MK2 Manual (v.02/2024.1)



If you need any assistance building, please let us know. We are here to help!

Team@RacingCockpits.com    +1(833)RACING2

©2024 Racing Cockpits Operating Company, LLC



## Safety Notices:

### Tip Hazard

When building (the uprights especially) they could fall over if accidentally knocked into or bumped.

### Sharp Edges

Cut aluminum can be sharp on the ends. During building (before end caps are installed) be careful not to catch on the edges as they could be sharp enough to cut.

### Pinch Hazard

When assembling it's possible to pinch fingers accidentally. Be sure your fingers are out of the way when tightening and making adjustments.

## Boxes you'll need for this Build:

**PL1** - (A&B *or* combined box) Long extrusions and brackets.

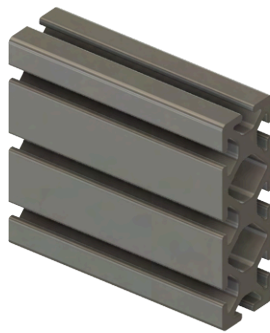
**PL2** - More extrusions and brackets.

**PB1** - Sheet metal parts like pedal plate, wheel deck etc as well as extra bolts and mounting hardware.

## Part Types:



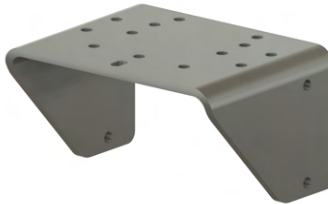
**2-Slot Profile**



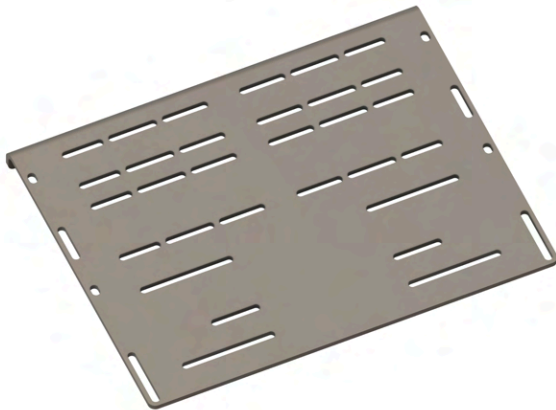
**3-Slot Profile**



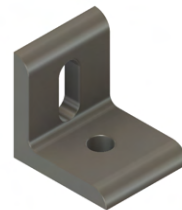
**Side mounts**



**Universal Wheel Deck**

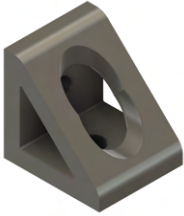


**Universal Pedal Plate**

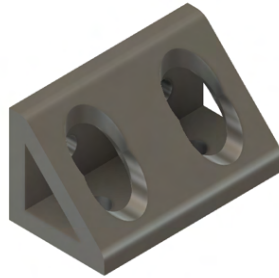


**2-Hole Slotted Corner Bracket**

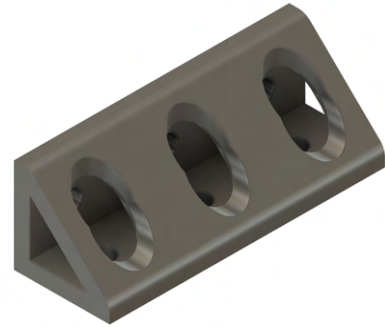
## RCP Cockpit PRO: Parts Guide (Cont.)



**2-Hole 90° Corner Gusset**



**4-Hole 90° Corner Gusset**



**6-Hole 90° Corner Gusset**



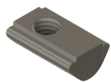
**3-Hole End Cap**



**2-Hole End Cap**



**1-Hole End Cap**



**Standard Spring T-Nut (M8)**



**Flange Nut (M8)**



**12mm SHORT Bolt (M8)**



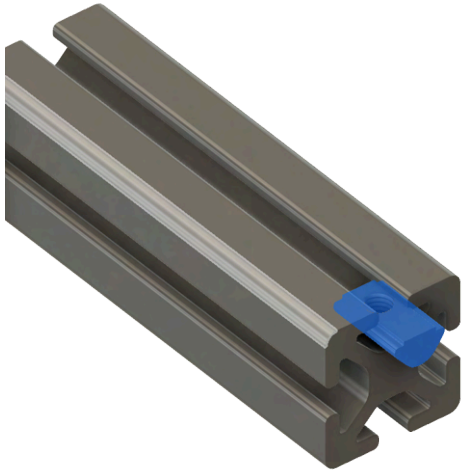
**16mm Standard Bolt (M8)**



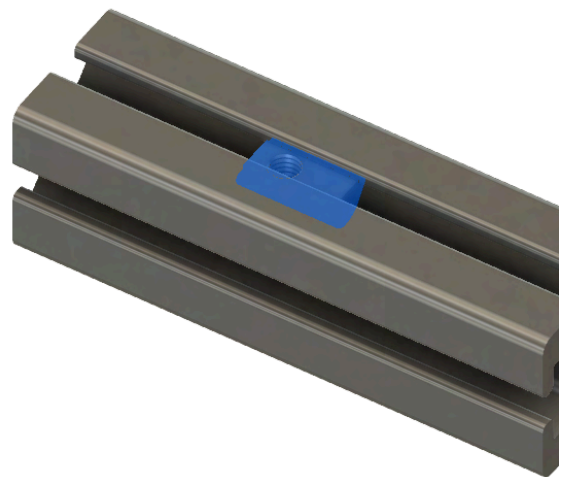
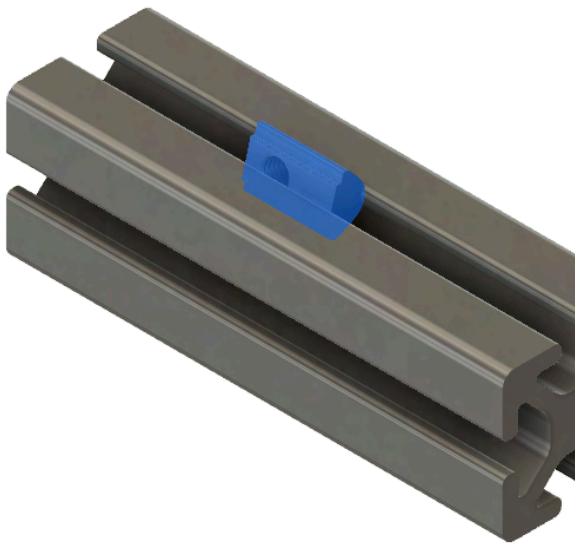
**20mm LONG Bolt (M8)**

# How to Use T-Nuts: A Quick Guide

**Method 1:** Simply slide T-Nut into T-Slot from the side.



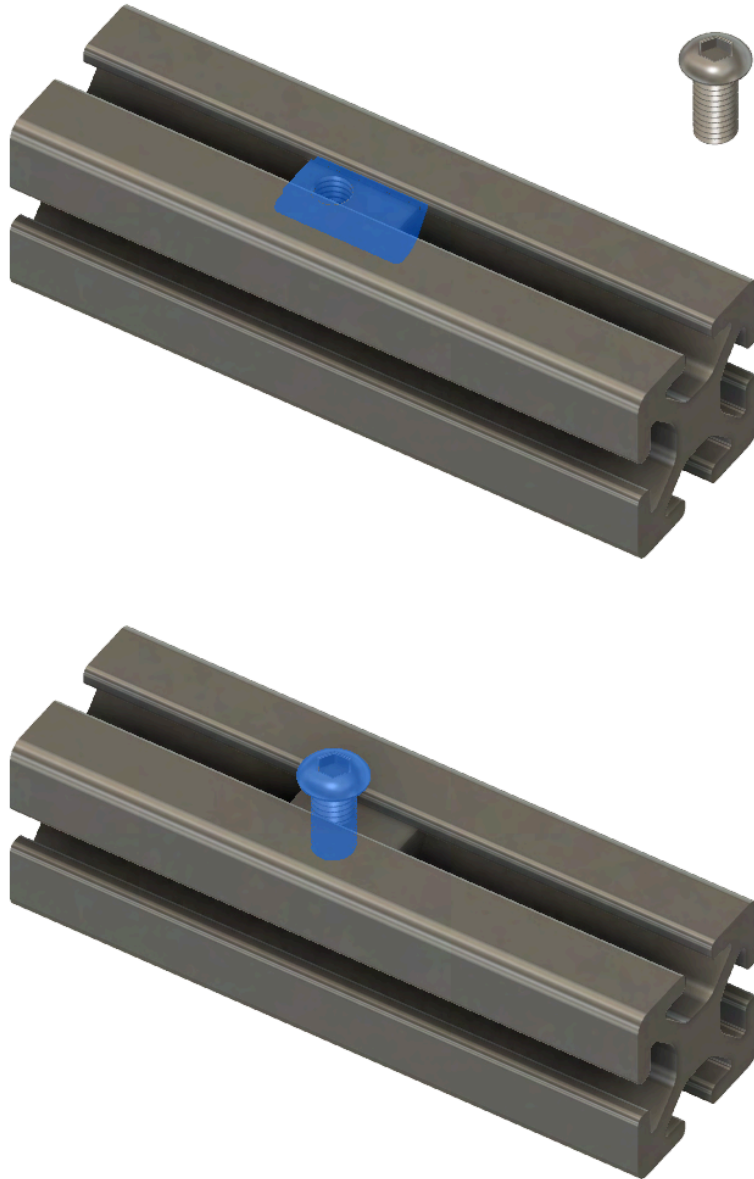
**Method 2:** Push T-Nut into T-Slot at an angle then snap into place so it ends up flat. You can lever the allen wrench in the screw hole to help with this. ***This method is what you will use once the ends are blocked.***





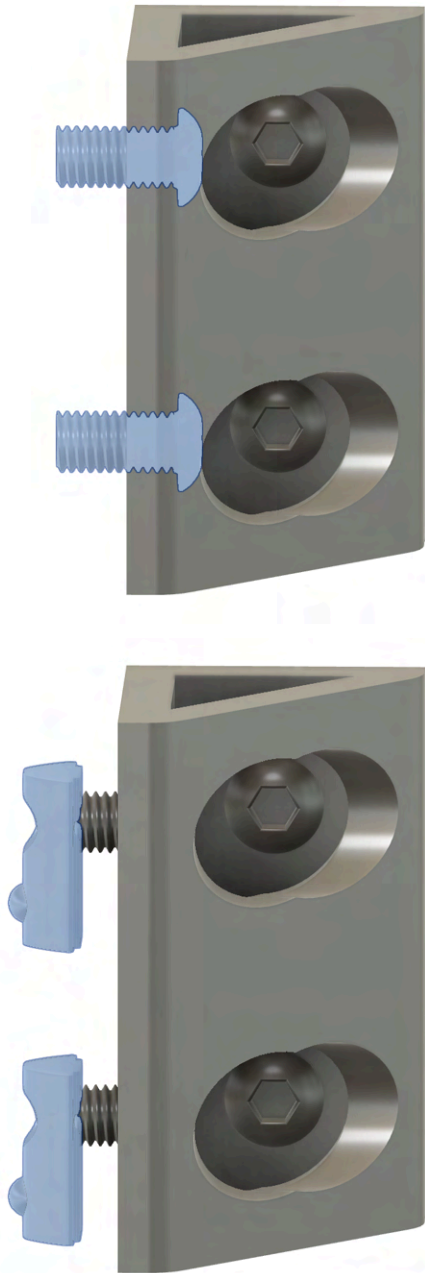
## How to Use T-Nuts: A Quick Guide (Cont.)

Once T-Nut is in place, simply secure the bracket etc. with the correct length screw.



**PRO TIP:** If you are installing vertically and need to hold the T-Nut in place, you can put the long end of the allen wrench into the T-Slot channel to hold it from below.

**Important** → **Method 3:** Place bolts into holes. Then loosely attach T-nuts onto bolts. Then you can slide the entire assembly into the T-slot all at once. ***This can save a huge amount of time!***



# Build Guide

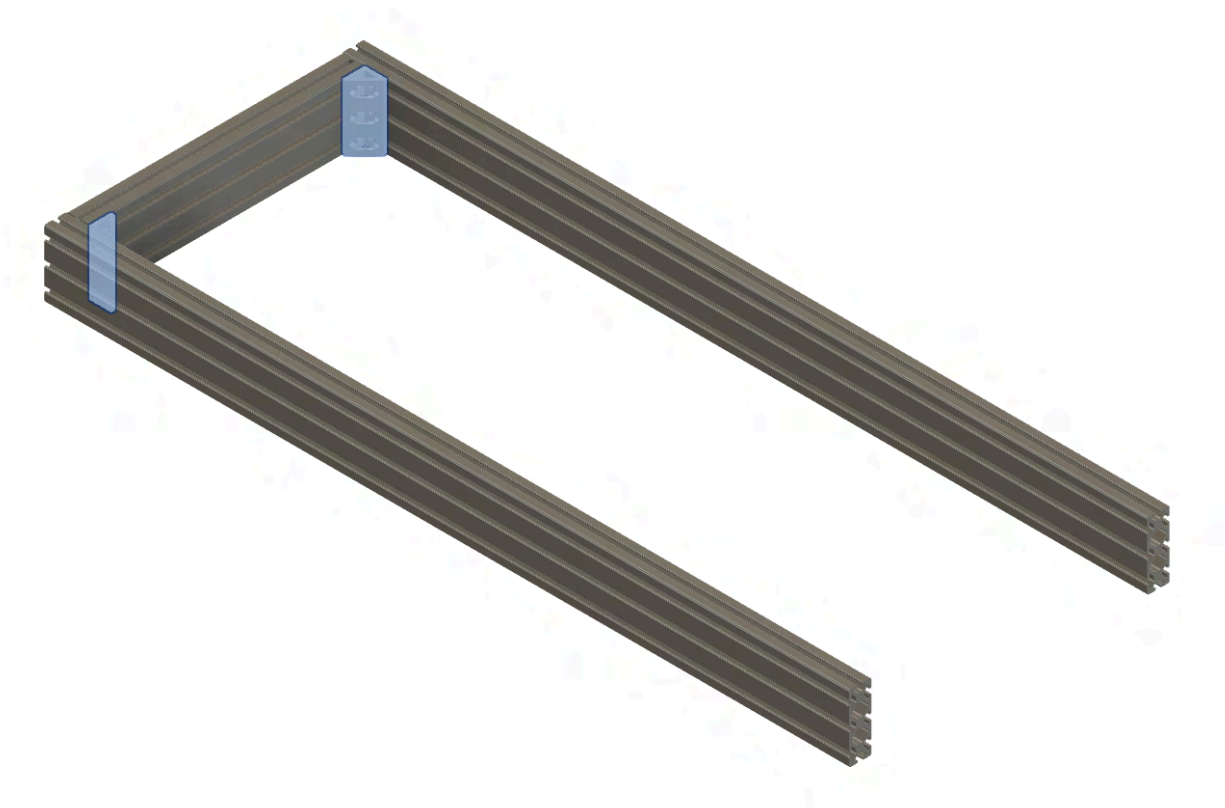
## Step 1: Connect Back Rail To Side Rails

Profile:

- 2 x 54" 3-Slot Profile
- 1 x 18.5" 3-Slot Profile (with Logo printed on back)

Hardware:

- 2 x 6-hole 90° Corner Gussets
- 12 x 16mm Standard Bolts
- 12 x Standard Spring T-Nuts



Page 8



RCP Cockpit PRO Manual (v.02/2024.1)



## Step 2: Connect Mid-Rail To Side Rails

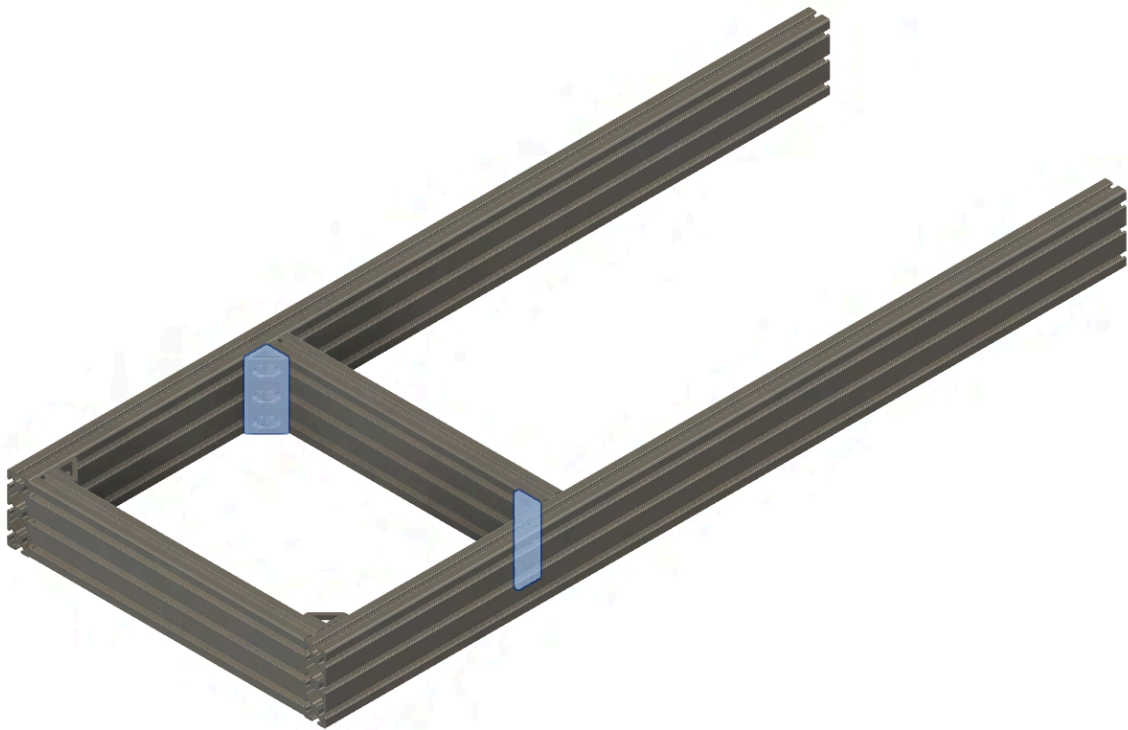
Profile:

- 1 x 18.5" 3-Slot Profile

Hardware:

- 2 x 6-Hole 90° Corner Gussets
- 12 x 16mm Standard Bolts
- 12 x Standard Spring T-Nuts

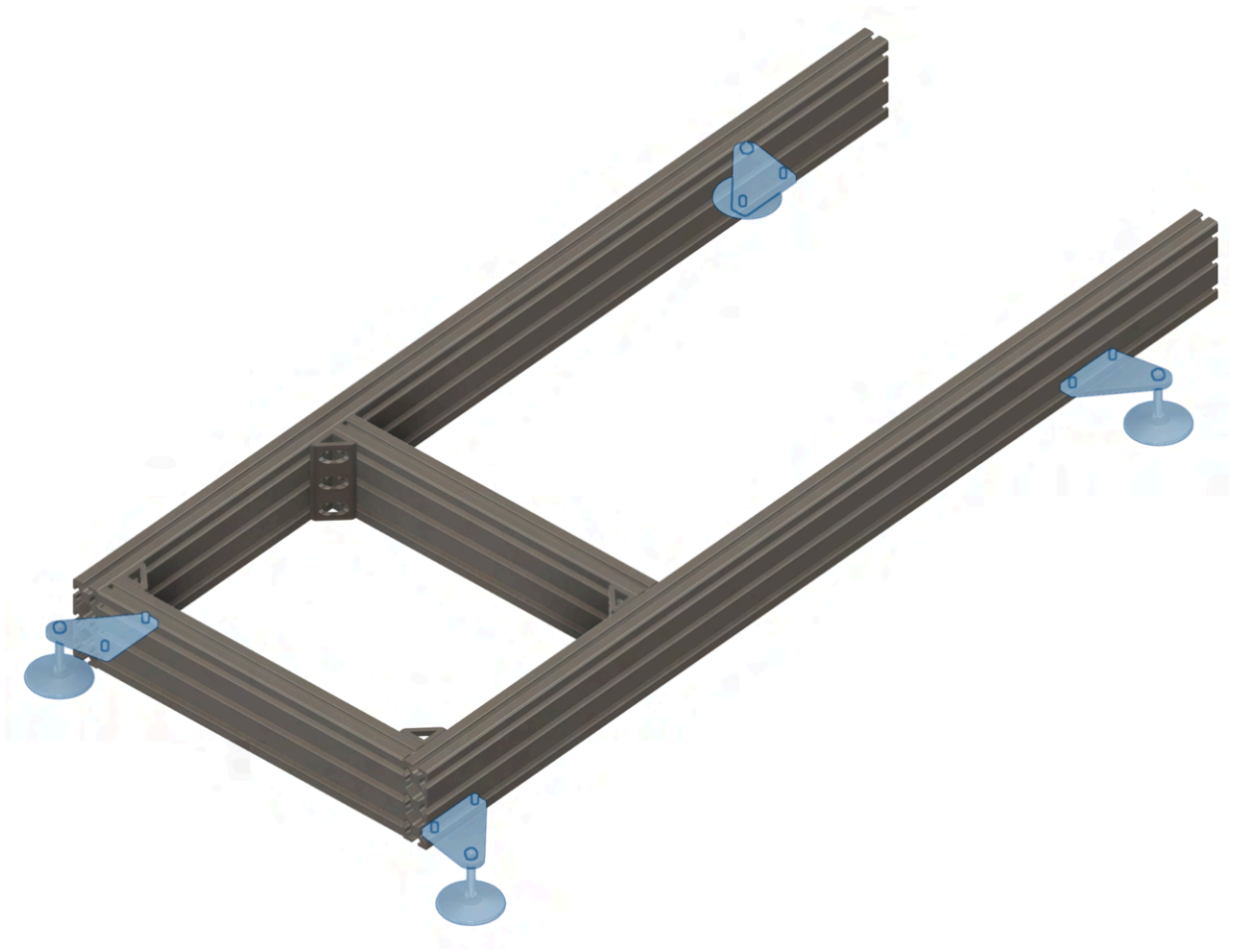
**Connect mid rail 17" from the back**



# Optional Installation Guide

## Sim Risers / Vibration Plates (SR)

**Note:** *If you didn't purchase Sim Risers: please put floor sliders under where the Sim Risers would normally go. The Chassis needs to be up off the ground for future steps.*



## Step SR1: Install Rubber Feet To Plates

Hardware:

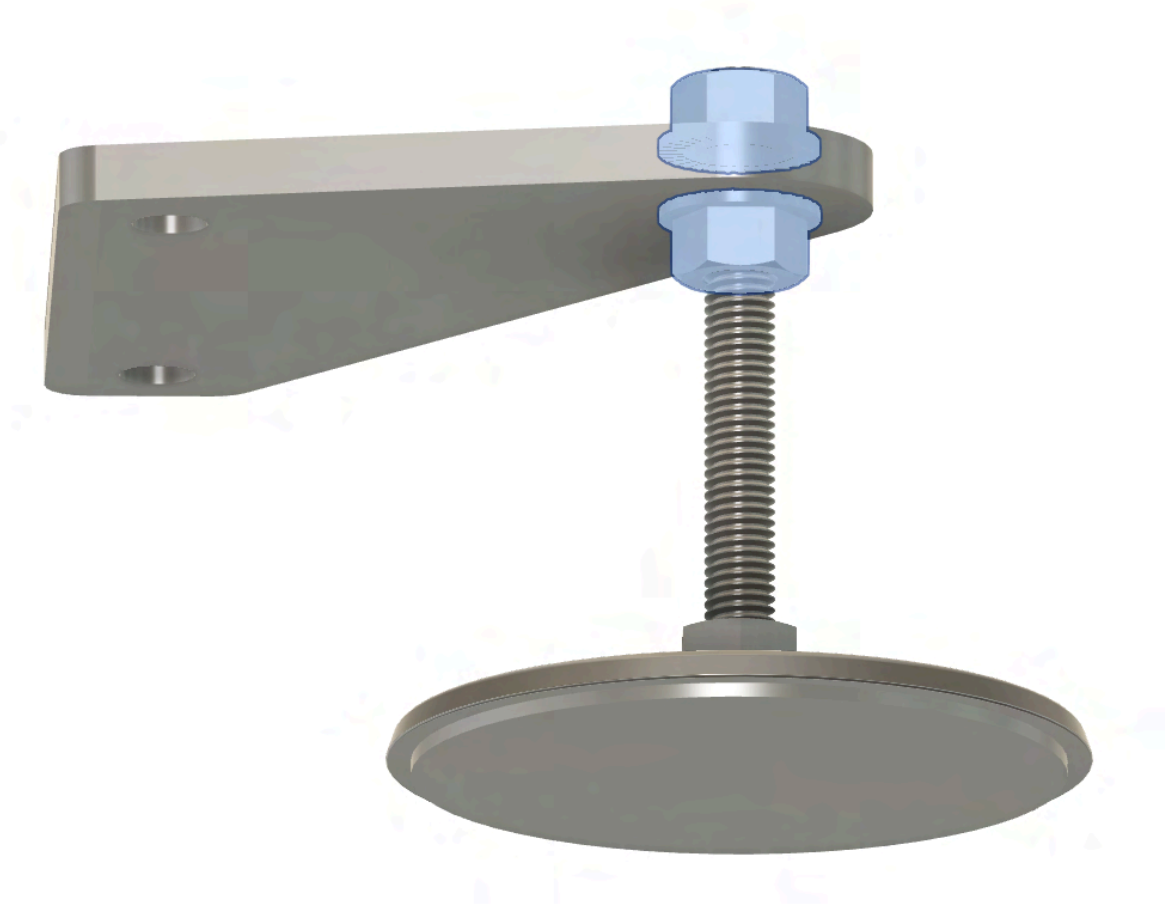
- 4 x Steel Sim Riser Plates
- 4 x Riser Studs with Rubber Feet
- 8 x M8 Flange Nuts

**Use the M8 Flange nuts to secure the rubber feet to the Sim Riser Plates.**

Make 2 right hand side

Make 2 left hand side (flip plate over)

*If you only have 4 Flange nuts use them on the bottom sides of each, and regular m8 nuts on top.*

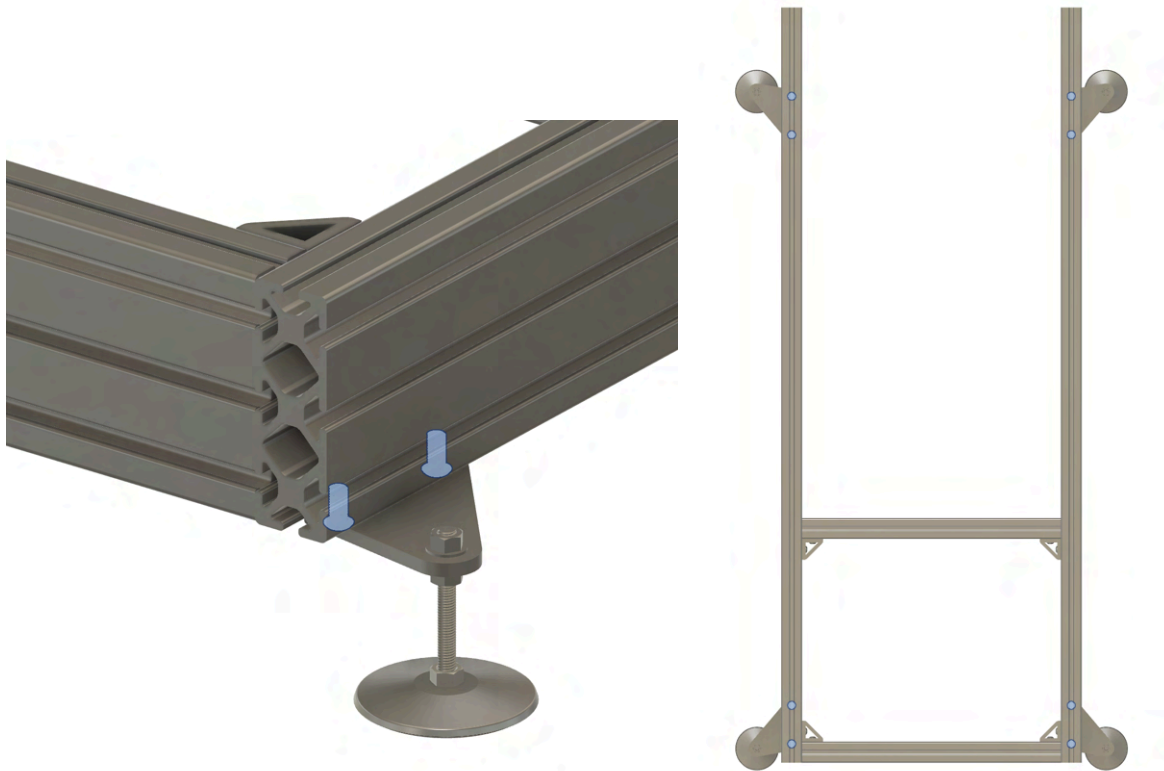


## Step SR2: Install Sim Risers to Chassis

Hardware:

- 8 x 16mm Standard Bolts
- 8 x Standard Spring T-nuts

1. Using 16mm M8 bolts facing upwards feed through the holes
2. Loosely attach T-nuts to the tops.
3. Lift up the sides of the chassis as needed to slide each sim riser assembly into the bottom T-slot channel. Tighten down all bolts once in the desired position.

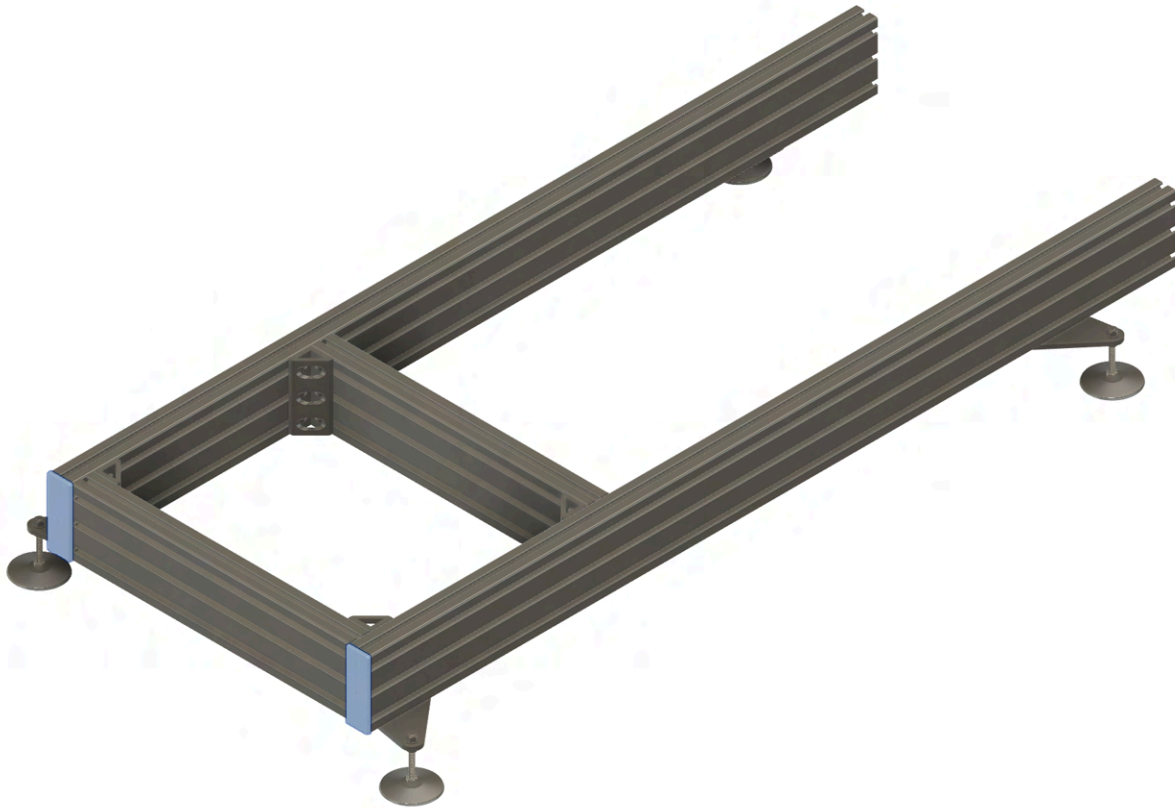


***Once installed, you can place floor sliders fabric side down, rubber side up UNDER the rubber feet. This allows you to be able to move your rig around by sliding it. It also protects your floors.***

## Step 3: Add Back End Caps

Hardware:

- 2 x 3-Hole End Caps



## Step 4: Install Seat Rails & Brackets

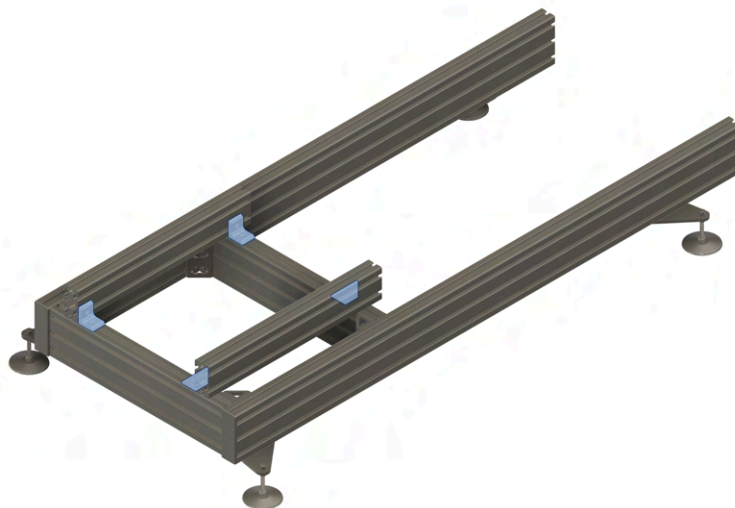
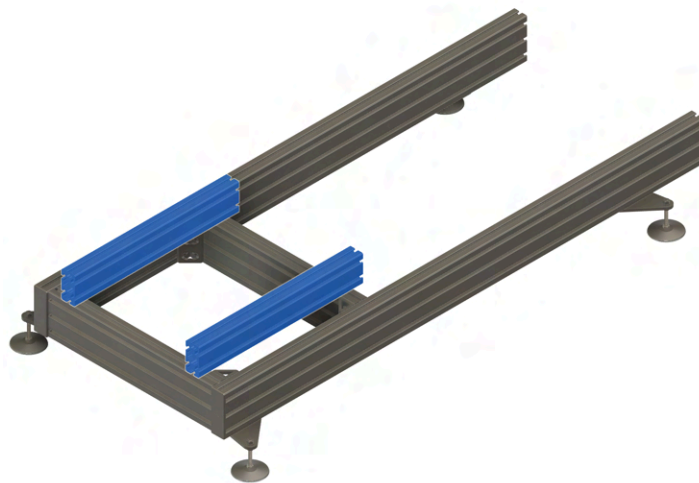
Profile:

- 2 x 18.5" 2-Slot Profile

Hardware:

- 4 x 2-Hole 90° **Slotted** Corner Brackets. Slots should be vertical to allow for extra seat tilt if desired.
- 8 x 16mm Standard Bolts
- 8 x Standard Spring T-Nuts

***Keep all bolts slightly loose for seat mounting next steps.***





## Step 5: Install Racing Seat

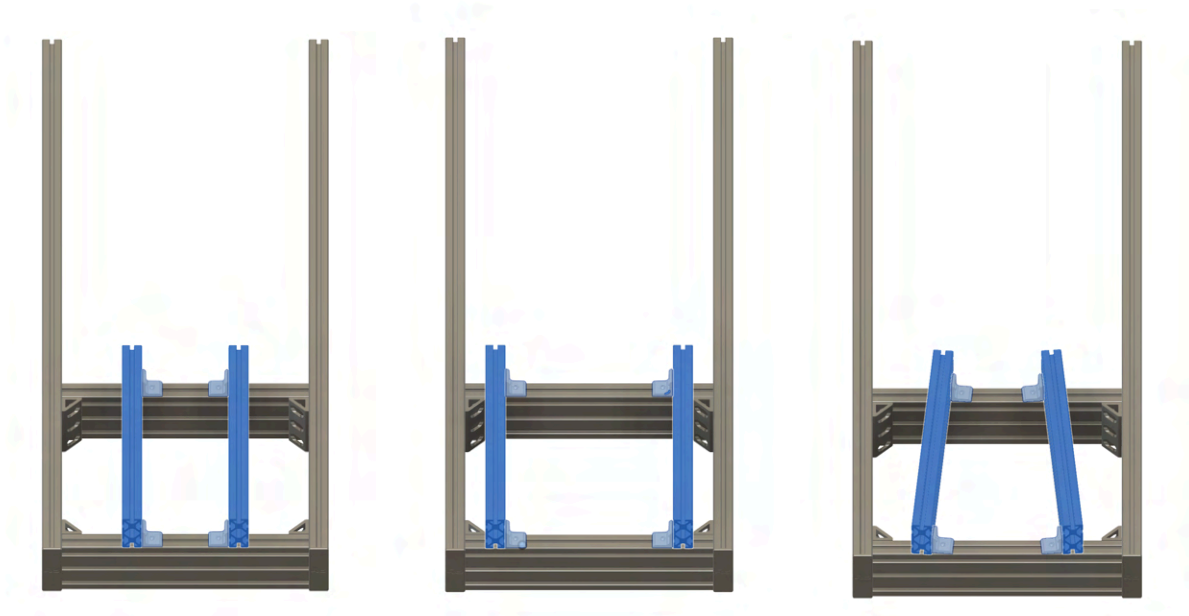
**Note:** *This is the hardest step. It can be a pain but you've got this!*

**Video here:** <https://www.youtube.com/watch?v=u6C0oN8c8bs> (skip to [6:49](#) in video if your seat already has sliders installed)

Hardware:

- 4 x 12mm **SHORT** Bolts
- 4 x Standard Spring T-Nuts

***Slide Seat Rails in and out, and angle as necessary to line up the seat mounting holes.***



Use **short 12mm bolts** to bolt your racing seat into T-nuts in the Seat Rail T-slots.

Mount seat lined up with the center of the seat rails. (To allow you to slide the seat back and forth if needed later in fine tuning).

If your seat has slider rails, you will need to slide them all the way forward to mount the back, and then all the way back to mount the front. **See our video here:**

<https://www.youtube.com/watch?v=u6C0oN8c8bs>



## Step 6: Install End Caps

Hardware:

- 4 x 2-Hole End Caps



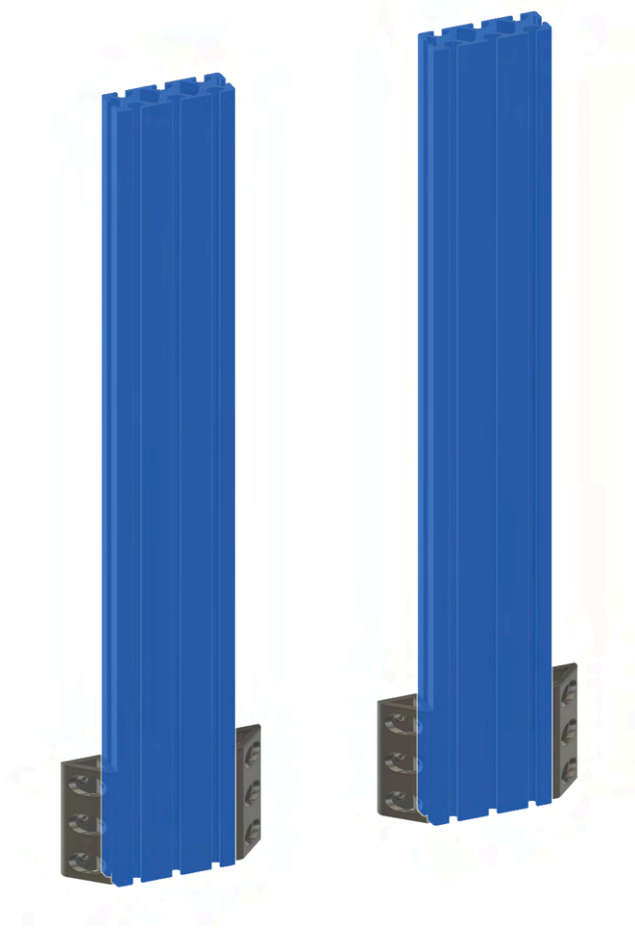
## Step 7: Prepare Uprights

Profile:

- 2 x 30" 3-Slot Profiles

Hardware:

- 4 x 6-Hole 90° Corner Gussets
- 24 x 16mm Standard Bolts
- 24 x Standard Spring T-Nuts



1. Put all 24 bolts and T-nuts loosely onto 6-Hole Corner Gussets. *This will save you a tremendous amount of time!*
2. Slide Gussets onto the sides of the 30" 3-Slot Profiles as shown.
3. Stand profiles up so the bottoms are flush and sitting on the flat ground. Press gussets down so they are also flat and flush with the ground. *This makes sure everything is square and flush before installing! **Be careful not to tip them over.***
4. Tighten down all 12 screws attaching the gussets to the uprights to lock them in place keeping them in the squared off position.

Page 18



## Step 8: Install and Align Uprights

1. Slide uprights onto the ends of the side rails and into position.
2. Tighten all 12 bolts attaching uprights onto the side rails.

*Align uprights to be just beyond your knees when sitting in your racing seat. If you have seat sliders, move the seat to the center for this measurement. This is to give a good starting position. You can fine tune later as needed.*

*You may need to prop up each side as you slide each upright on. You can put another piece of loose profile laid flat under the side for this.*

*Be sure to leave t-nuts loose enough you can slide each side on with minimal pressure to minimize any scratching (and just make it easier to do). If any scratching occurs you can use the included pen to touch it up.*



## Step 9: Install Side Mount Profiles

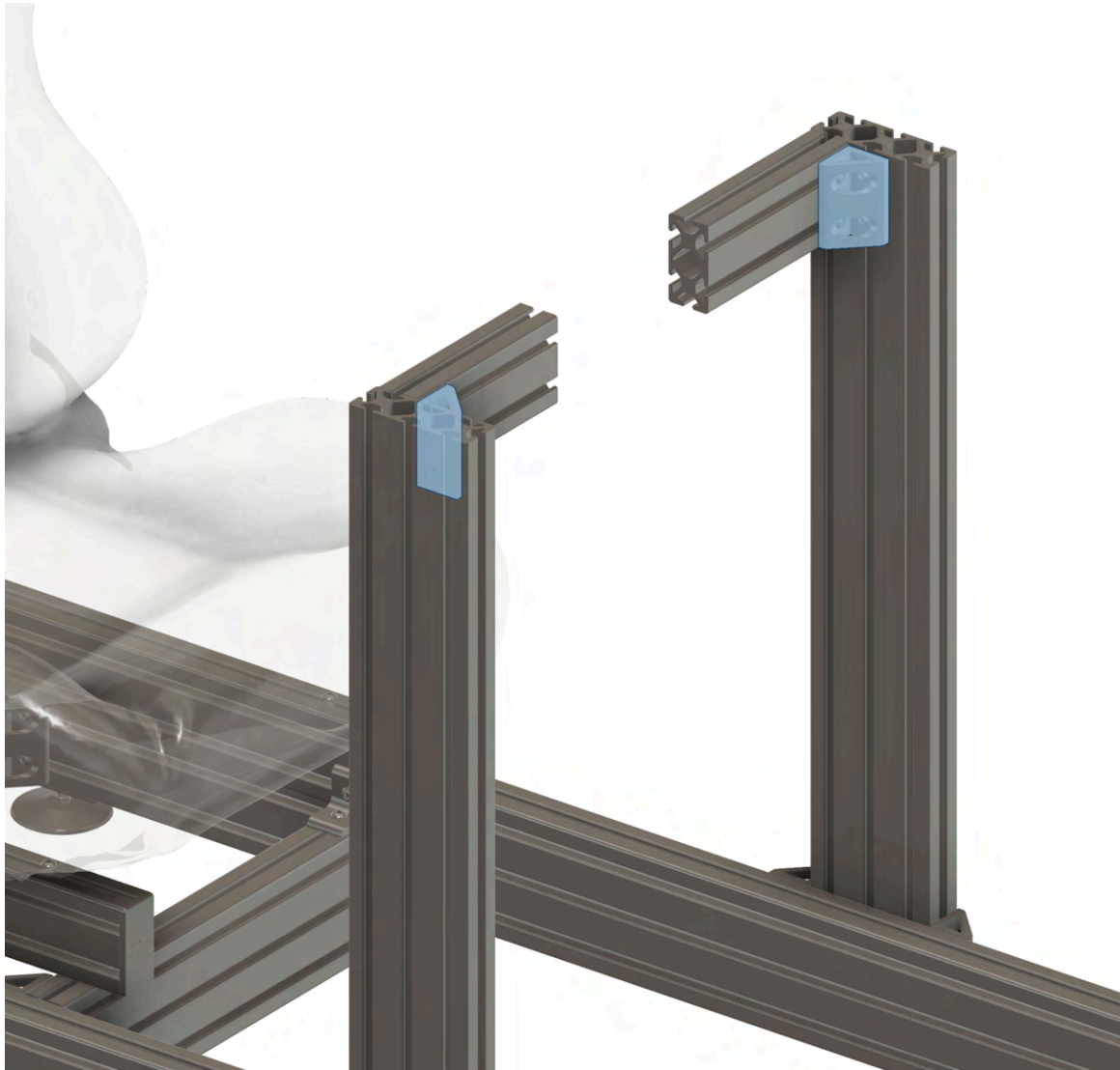
Profile:

- 2 x 7" 2-Slot Profile

Hardware:

- 2 x 4-hole 90° Corner Gussets
- 8 x 16mm Standard Bolts
- 8 x Standard Spring T-Nuts

***Install lined up with the tops up the uprights to ensure everything is square while mounting the wheelbase, then we can adjust height later.***



Page 20



RCP Cockpit PRO Manual (v.02/2024.1)



## Step 10: Install Side Mounts

Hardware:

- 2 x Side Mounts
- 8 x 16mm Standard Bolts
- 8 x Standard Spring T-Nuts

***Leave Bolts slightly loose to allow for the next step.***



## Step 11: Install End Caps

Hardware:

- 2 x 3-Hole End Caps
- 2 x 2-Hole End Caps



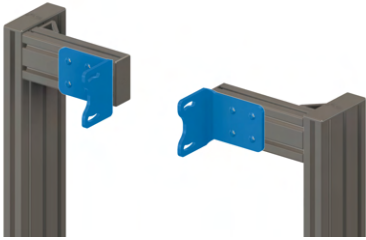
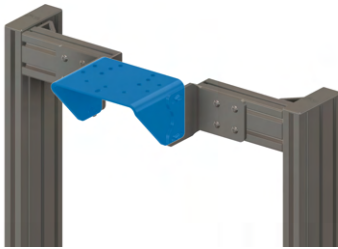
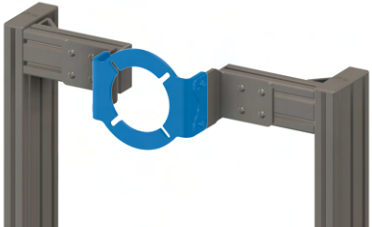
Page 22



RCP Cockpit PRO Manual (v.02/2024.1)

## Step 12: Install Correct Wheel Base Adapter

Follow the option that matches your wheel base. Some wheel bases offer multiple mounting options. Always use side or front mount options when offered.

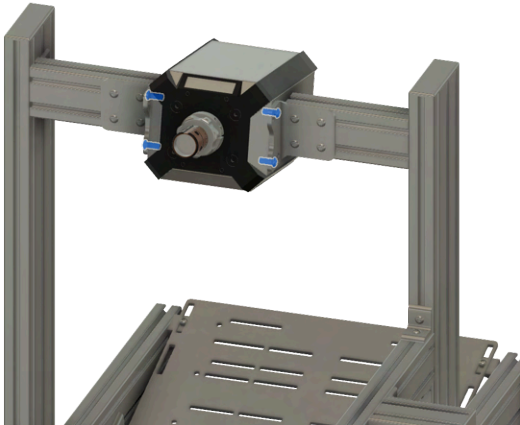

Option A: Rock Solid Side Mounts	Option B: Universal Wheel Deck	Option C: Front Mount
Fanatec Direct Drive CSL DD GT DD PRO DD1 DD2 Etc...	Fanatec Belt Driven (CSL, CSW) Logitech Thrustmaster Accuforce Moza Etc...	SimuCube VRS OSW MiGE Simagic Etc...
		

## Option A: Rock Solid Side Mounts

Hardware:

- 1 x DD1/DD2 (purchased separately)
- 4 x 20mm LONG Bolts

1. Hold the wheelbase in place.
2. Install wheel base screws.

DD1/DD2	Others (GT DD PRO / CSL DD / Etc)
	
<p>Screw in each 20mm LONG side bolt until they are slightly tight, while keeping the DD1/DD2 centered in the gap between the side mount profiles.</p>	<p>Use the 4 silver M6 bolts included in the accessory mounting bag. Screw these bolts (with washers on top) through the rock solid side mounts and into the Fanatec provided side channel T-Nuts.</p> <p><b>Note:</b> You need the side channel T-Nuts from your Fanatec box! Don't accidentally throw them away.</p>

3. Screw in each bolt until they are slightly tight. Since we left side mounts slightly loose, the wheelbase will stay in place while the side mounts slide towards the middle as you tighten the bolts.
4. **Adjust the Angle of tilt of the wheelbase.** Once you are happy, **fully tighten** the bolts into the wheelbase and then **finally fully tighten** the 8 x 16mm Standard Bolts that hold the side mounts onto the extrusions.

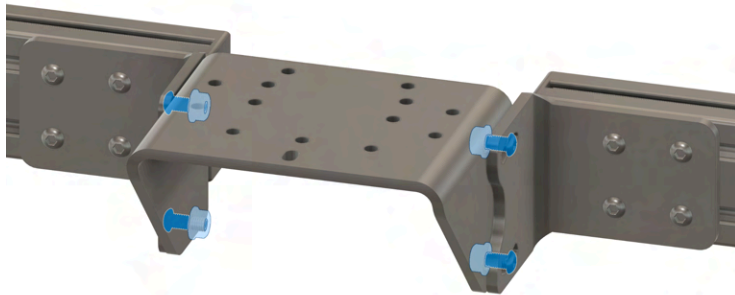
**Everything should now be secure and rigid. If it's not, tighten whatever is needed.**

## Option B: Universal Wheel Deck

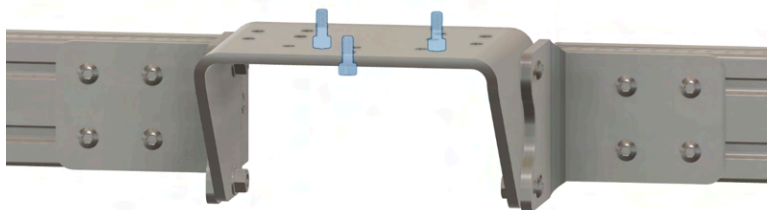
Hardware:

- 1 x Bottom Mounted Wheelbase (Logitech etc purchased separately)
- 4 x 20mm LONG Bolts
- 4 x M8 Flange Nuts
- 4 x Silver M6 Bolts & Washers (from accessory mounting bag)

### 1. Install the Universal Wheel Deck using the 20mm LONG Bolts and M8 Flange Nuts



2. Finally fully tighten the 8 x 16mm Standard Bolts that hold the side mounts onto the extrusions.
3. Place your wheelbase onto the Universal Wheel Deck, and align mounting holes by looking from below.
4. Install your wheelbase using 2, 3, or 4 of the included M6 bolts and washers (depending on your exact wheel base you may need different size bolts)



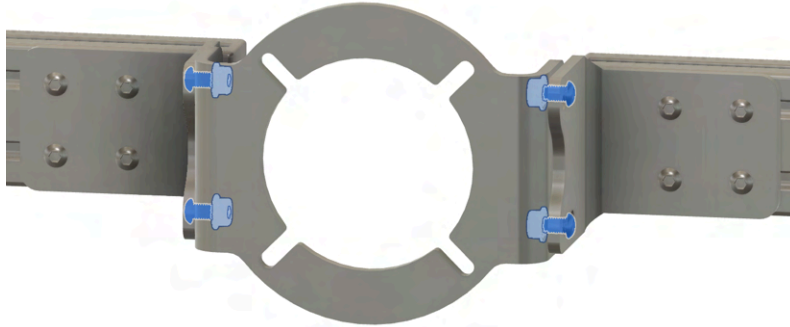
***Everything should now be secure and rigid. If it's not, tighten whatever is needed.***

## Option C: Front Mount

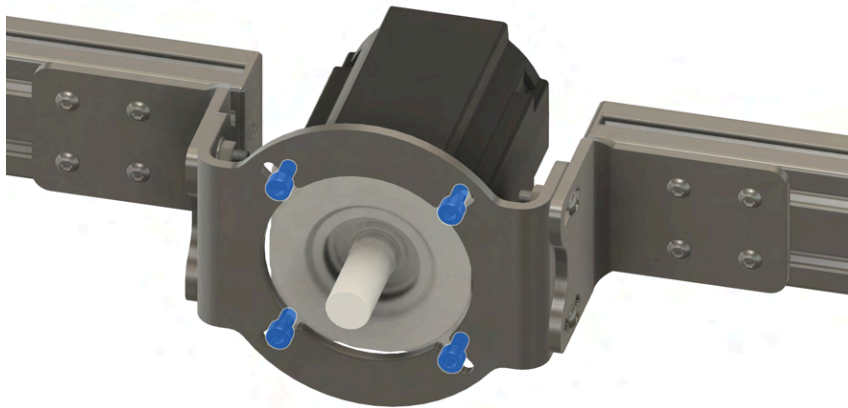
Hardware:

- 1 x Bottom Mounted Wheelbase (Logitech etc purchased separately)
- 4 x 20mm LONG Bolts
- 4 x M8 Flange Nuts
- 4 x Silver M6 Bolts (from accessory mounting bag)

### 1. Install the Front Mount using the 20mm LONG Bolts and M8 Flange Nuts



2. Finally fully tighten the 8 x 16mm Standard Bolts that hold the side mounts onto the extrusions.
3. Install your wheelbase onto the Front Mount using 4 of the included M6 bolts (depending on your exact wheel base you may need different size bolts)



**Pro Tip:** Install one bolt loosely into the wheelbase on its own, then lift the entire assembly into place, slide the bolt into the corresponding slot, and tighten onto the front mount. This allows you to position the wheelbase in the right spot, tighten the single bolt, and then be free to mount the other 3 bolts into the wheelbase without having to hold it.

Page 26





## Step 13: Set Wheel Deck Height & Tilt

1. **Raise or lower Wheelbase so the center shaft is 2-3" below shoulder height when sitting in your racing chair.** Use a tape measure to ensure the same height on each side. Be careful when moving up and down to ensure you don't loosen things so much they can fall. Having an extra set of hands for this step can be very helpful. You can also pull out gently on the uprights to prevent scratching while moving, but again be sure you've got someone holding the wheelbase so it can't fall.
2. **Adjust the tilt as needed / desired.**

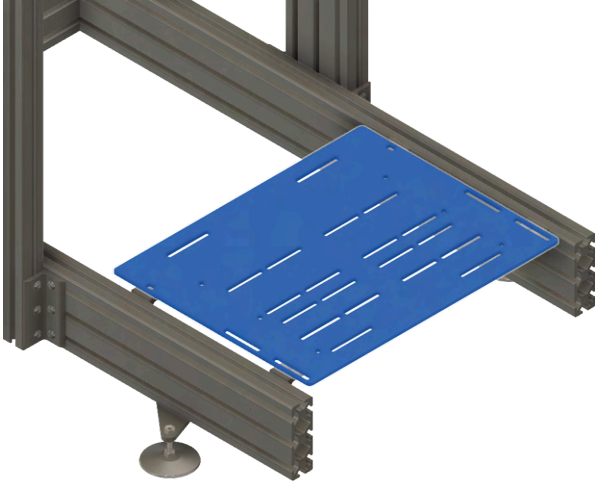
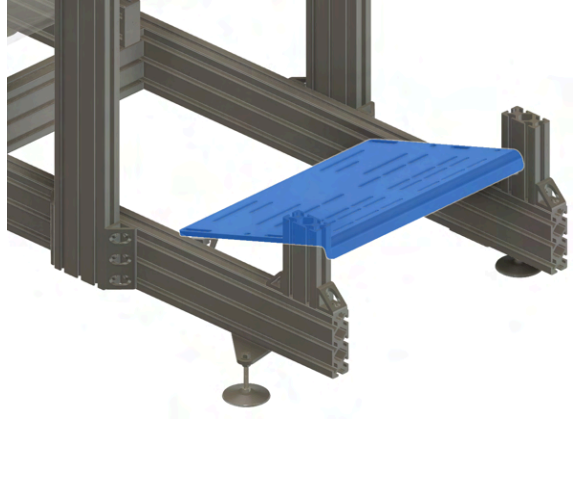


Page 27



RCP Cockpit PRO Manual (v.02/2024.1)

## Step 14: Install Pedal Plate

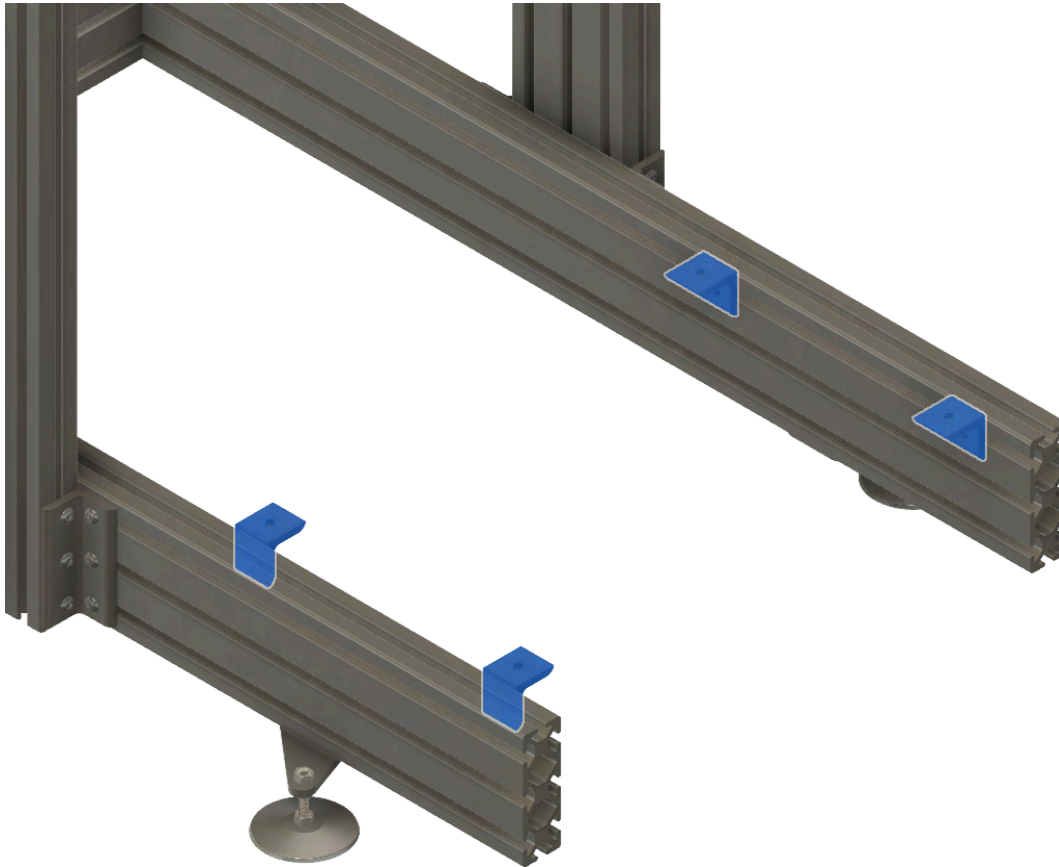
<p><b>Option A:</b> <b>Standard seating position</b> Good for maximum comfort / less pressure on the low back.</p>	<p><b>Option B:</b> <b>GT seating position</b> Good for maximum immersion / realism. Higher and more tilted position.</p>
	

## Option A: Standard Seating Position

### Install Pedal Plate Brackets

Hardware:

- 4 x 2-hole 90° Corner Brackets (Or Gussets)
- 4 x 16mm Standard Bolts
- 4 x Standard Spring T-Nuts



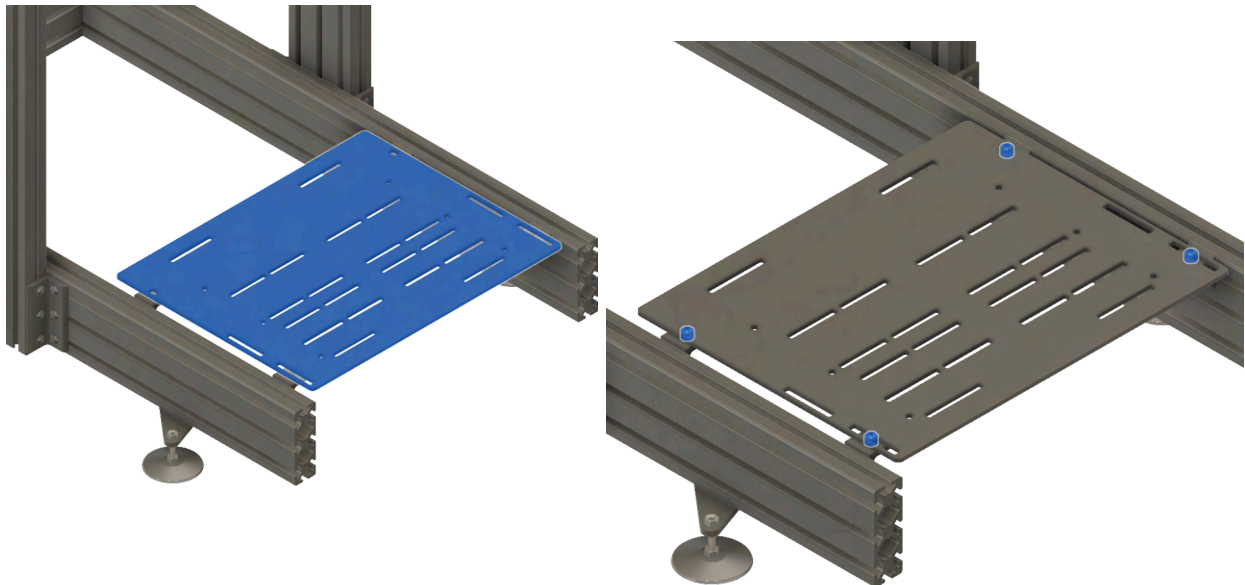
# Install & Align Universal Pedal Plate

Hardware:

- 1 x Steel Universal Pedal Plate
- 4 x 20mm **LONG** Bolts
- 4 x M8 Flange Nuts

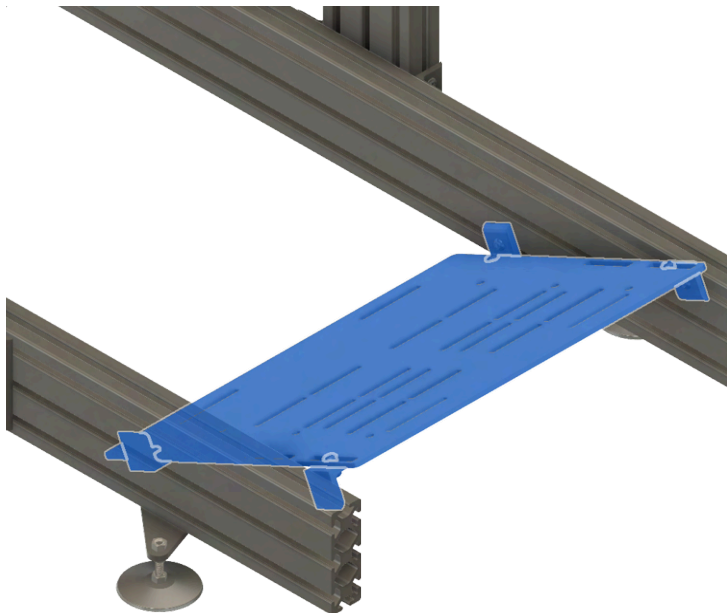
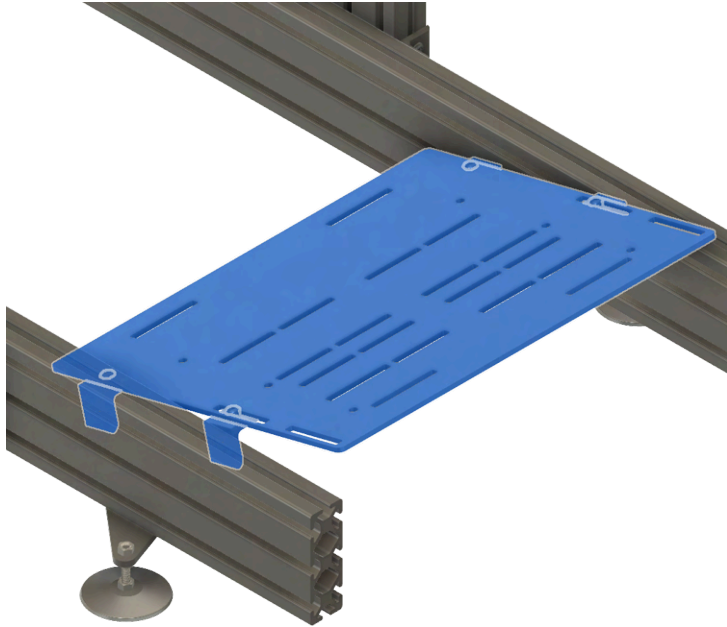
***Pass 4 x 20mm LONG Bolts through the pedal plate and mounting brackets from the top. Secure with Flat Nuts on the bottom side.***

You may need to loosen the back rail (with logo), and push side rails in or out slightly to get everything aligned correctly. This is normal. Just remember to tighten everything back up when you're done.



# Pedal Plate Mounting Examples

*There are many different Pedal Plate mounting options for different heights, distances, and angles. You can and should get creative to get the position perfect for you. You can even flip the 2-hole 90° Corner Brackets over to get lower like in the last example.*

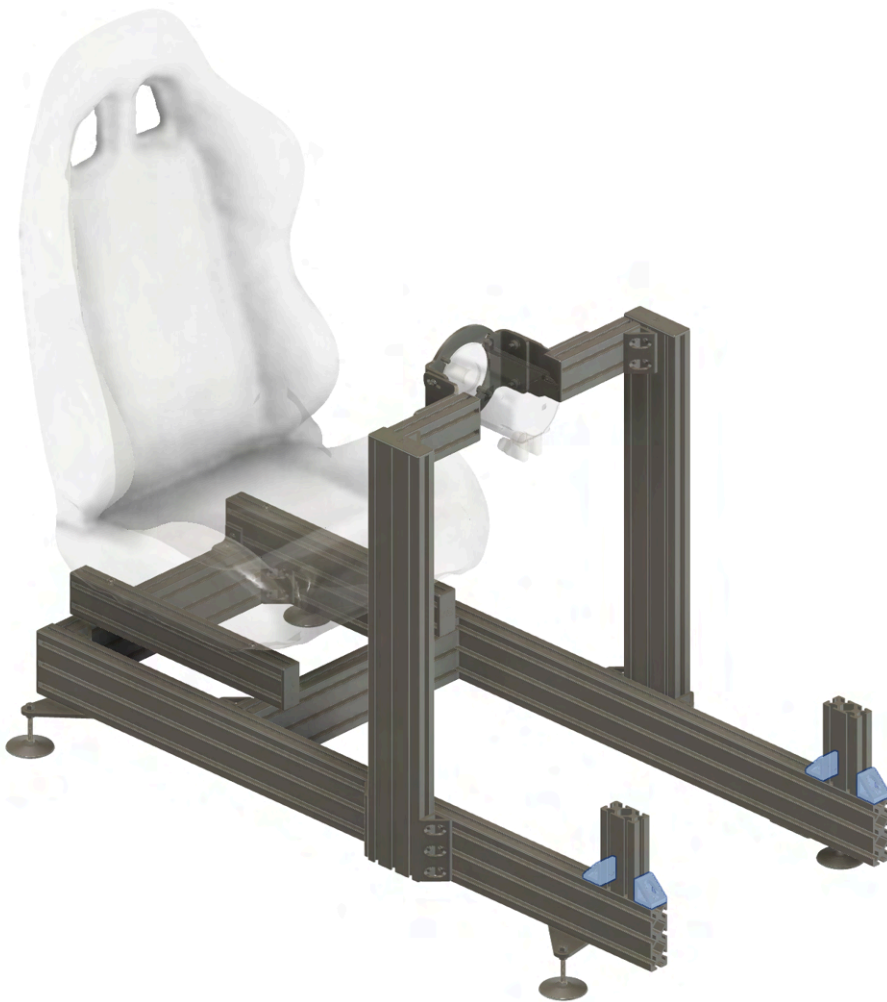


## Option B: GT Seating Position

### Install right and left pedal plate risers

#### Hardware:

- 2 x 5.5" 2-Slot Profiles
- 4 x 2-hole 90° Corner Gussets
- 8 x 16mm Standard Bolts
- 8 x Standard Spring T-Nuts

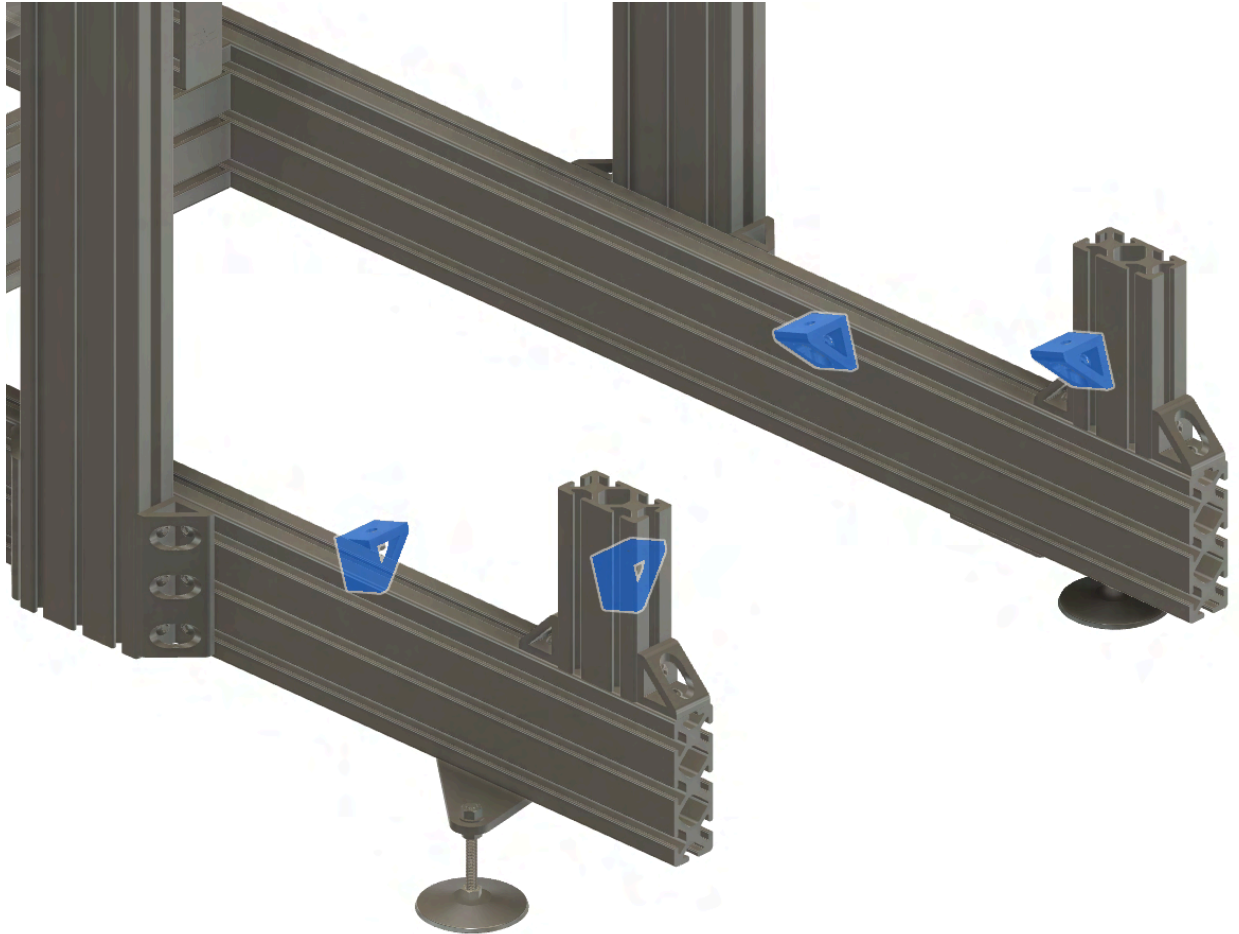




# Install Pedal Plate Gussets

Hardware:

- 4 x 2-hole 90° Corner Gussets
- 4 x 16mm Standard Bolts
- 4 x Standard Spring T-Nuts



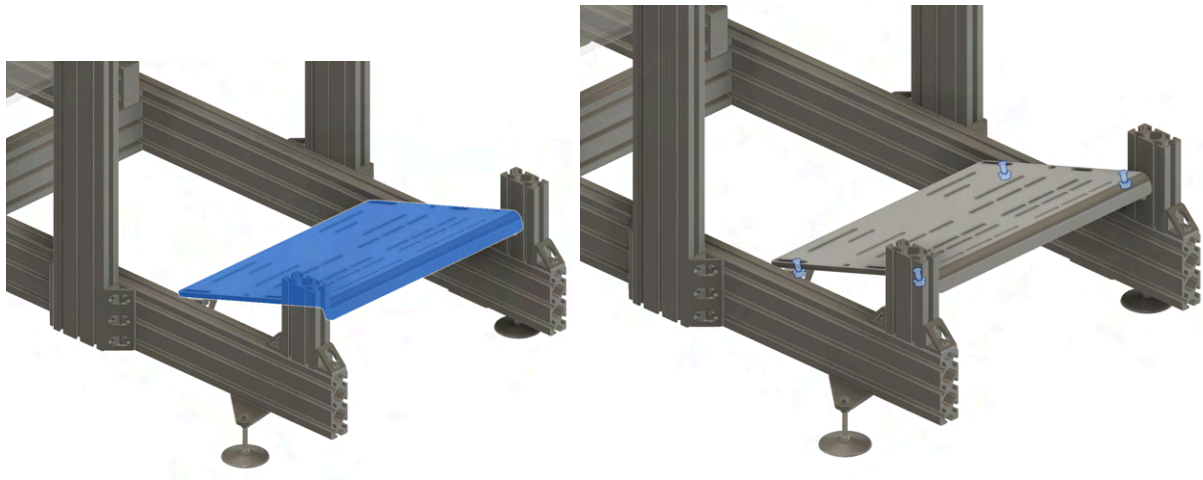
# Install & Align Universal Pedal Plate

Hardware:

- 1 x Steel Universal Pedal Plate
- 4 x 20mm **LONG** Bolts
- 4 x M8 Flange Nuts

**Pass 4 x 20mm LONG Bolts through the pedal plate and mounting gussets from the top. Secure with M8 Flange Nuts on the bottom side.**

**You may need to loosen the back rail (with logo), and push side rails in or out slightly to get everything aligned correctly.** This is normal. Just remember to tighten everything back up when you're done.

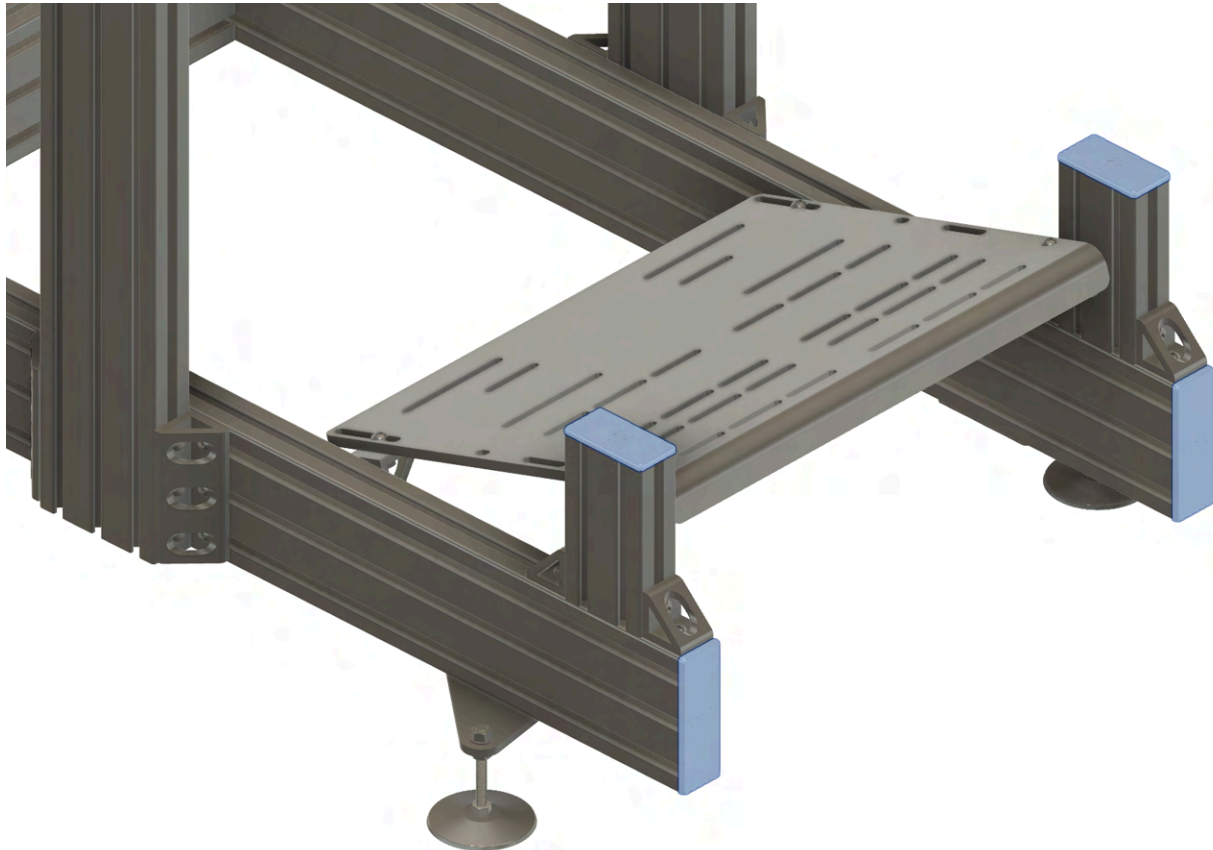


**There are many different Pedal Plate mounting options for different heights, distances, and angles.** You can mount into any slot at any height. You can and should get creative to get the position perfect for you.

## Step 15: Install End Caps

Hardware:

- 2 x 3-Hole End Caps
- 2 x 2-Hole End Caps



## Step 16: Install Pedals & Align Everything

Hardware:

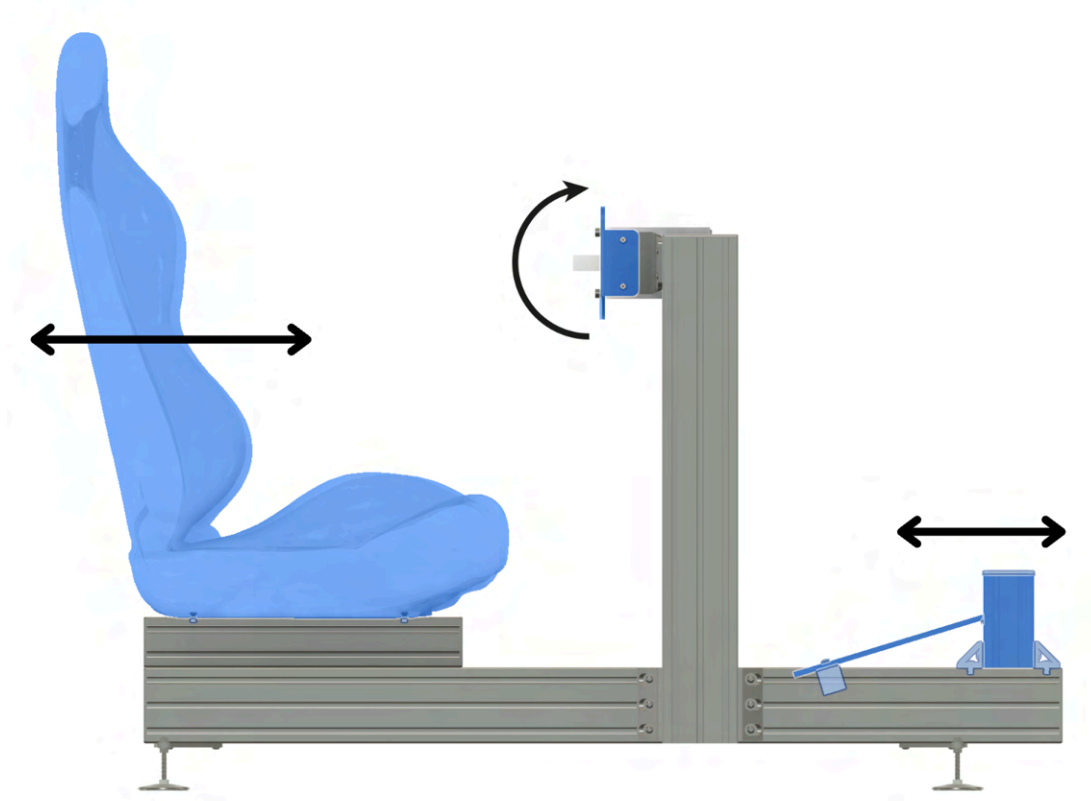
- 1 x Pedal Set (purchased separately)

At this point the rig is **not fully rigid** (since shifter rail is not installed) but it is still somewhat easy to adjust the placement of everything so let's go ahead and do that.

1. **Please install your pedal set now (if you haven't already). Use the hardware in the "Accessories mounting kit" bag if needed.**
2. **Adjust all heights and distances to your preference before moving on.** *Pro Tip: It's easiest to leave uprights where they are, and just adjust the seat, wheel deck, and pedal plate.*

### Tips:

- Top of the steering wheel should be at about your chin level.
- Move the pedal plate close enough so your knees are still somewhat bent when sitting in your racing chair and the gas pedal is *fully depressed*.



## Step 17: Install Shifter Rail:

Profile:

- 1 x 12" 2-Slot Profile
- 1 x 18.5" 2-Slot Profile

Hardware:

- 3 x 2-Hole 90° Corner Gussets
- 1 x 6-Hole 90° Corner Gusset
- 12 x 16mm Standard Bolts
- 12 x Standard Spring T-Nuts

You can install shifter rails on either right or left side depending on if you'll be shifting with your right or left hand. **You should also install this even if you won't be using a shifter because it adds rigidity to the entire cockpit.**



## Step 19 (Optional): Install Shifter Extension & Gussets

**For Fanatec Shifter see this manual:**

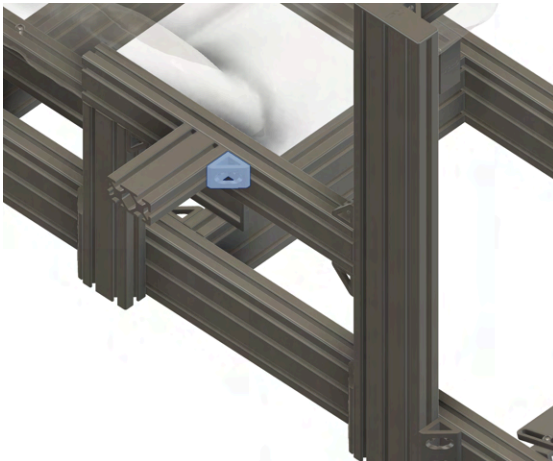
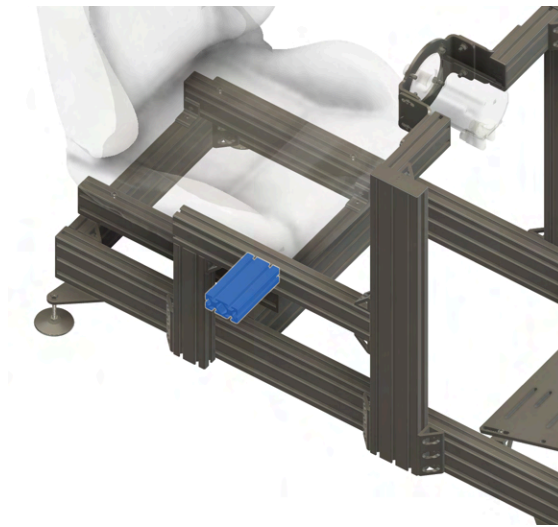
[https://cdn.shopify.com/s/files/1/0536/3548/1798/files/Fanatec\\_Shifter\\_Mounting\\_Guide\\_Supplemental\\_v.06\\_2021.1.pdf?v=1623261055](https://cdn.shopify.com/s/files/1/0536/3548/1798/files/Fanatec_Shifter_Mounting_Guide_Supplemental_v.06_2021.1.pdf?v=1623261055)

Profile:

- 1 x 6" 2-Slot Profile

Hardware:

- 2 x 2-Hole 90° Corner Gussets
- 4 x 16mm Standard Bolts
- 4 x Standard Spring T-Nuts

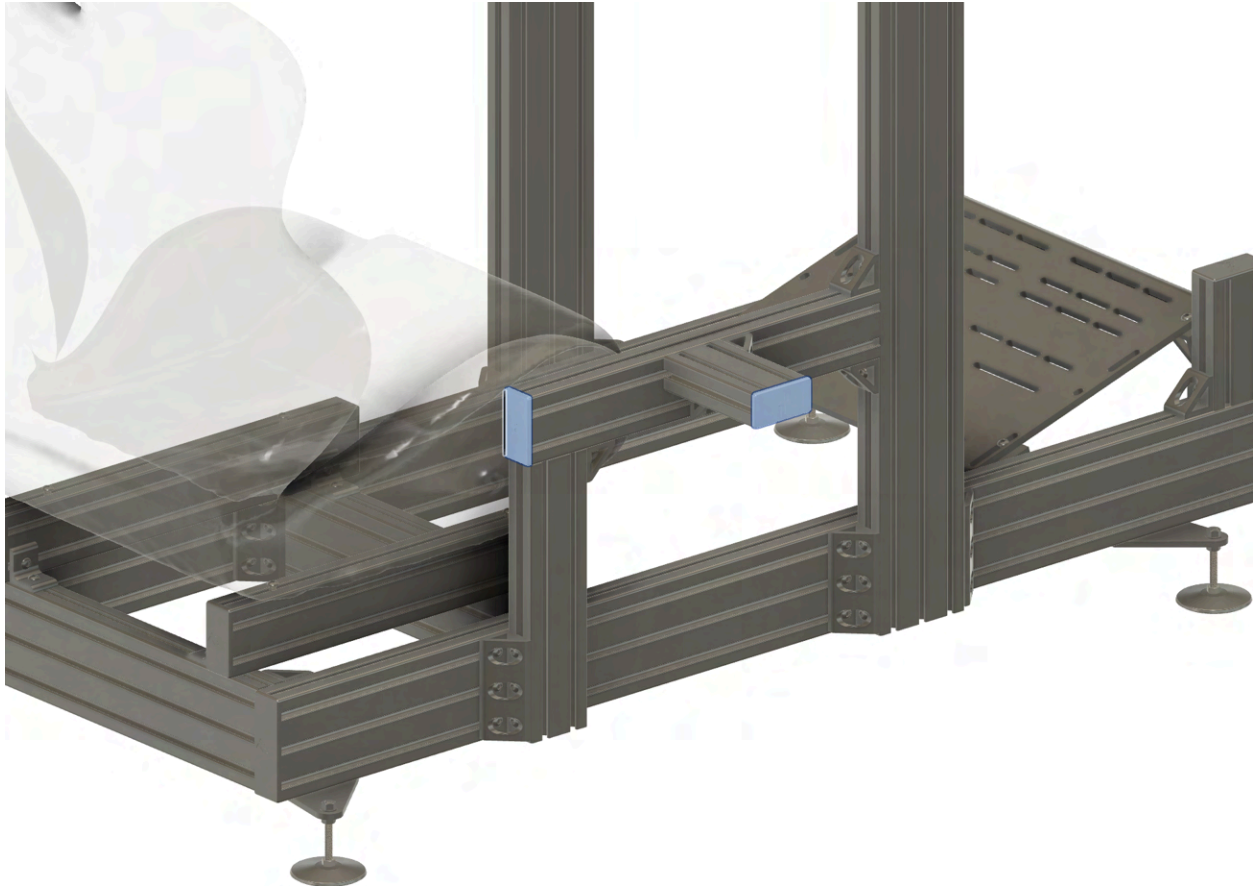




## Step 20: Install End Caps:

Hardware:

- 2 x 2-Hole End Caps

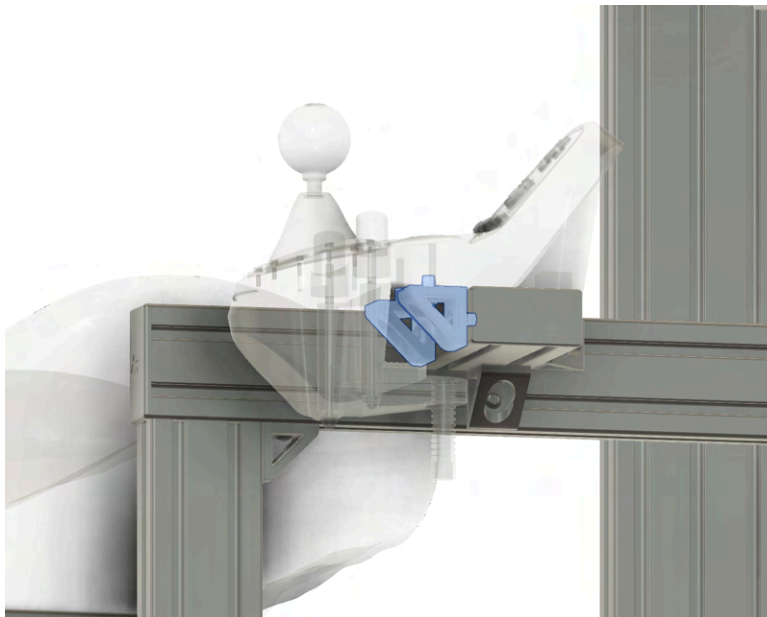
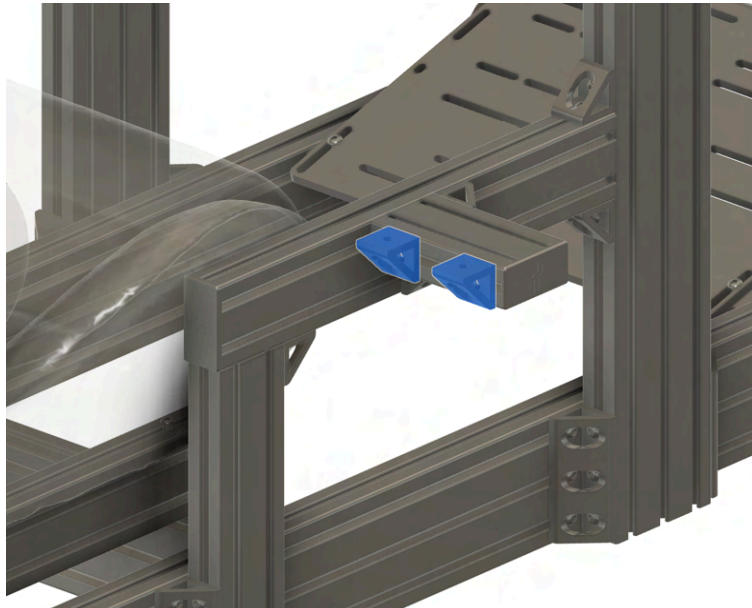




## Step 21 (Optional): Install Shifter

Hardware:

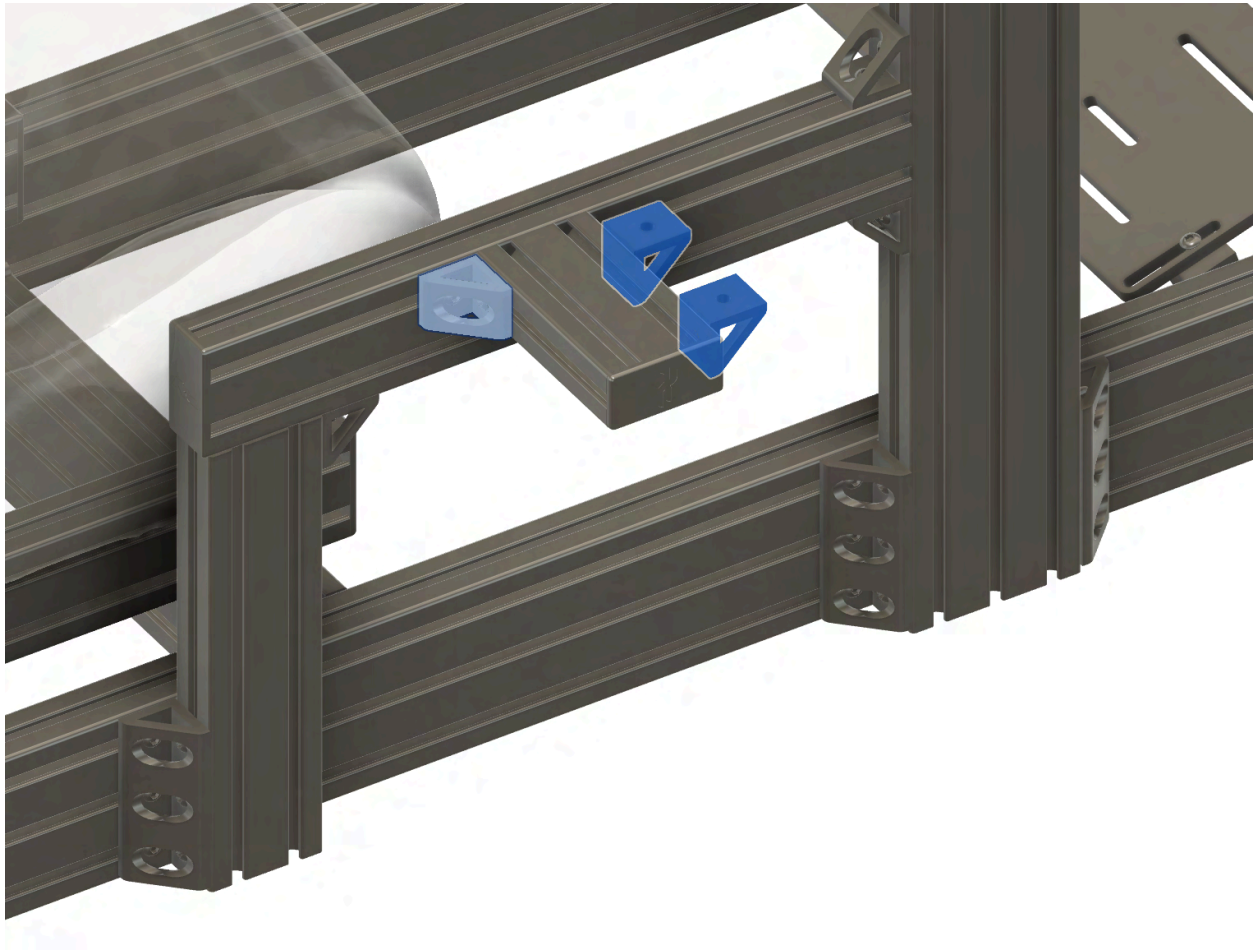
- 2 x 2-Hole 90° Corner Gussets
- 2 x 16mm Standard Bolts
- 2 x Standard Spring T-Nuts
- 1 x Shifter + Mounting Hardware (purchased separately).



## Step 21 (Cont.): Alternative Shifter Layouts

### Notes:

- Adjust extension brackets and shifter mounting brackets around to the front or back to fit your shifter. Here is an example of the alternative front mounted option.
- Align your shifter so it's parallel with the steering wheel when in neutral position.

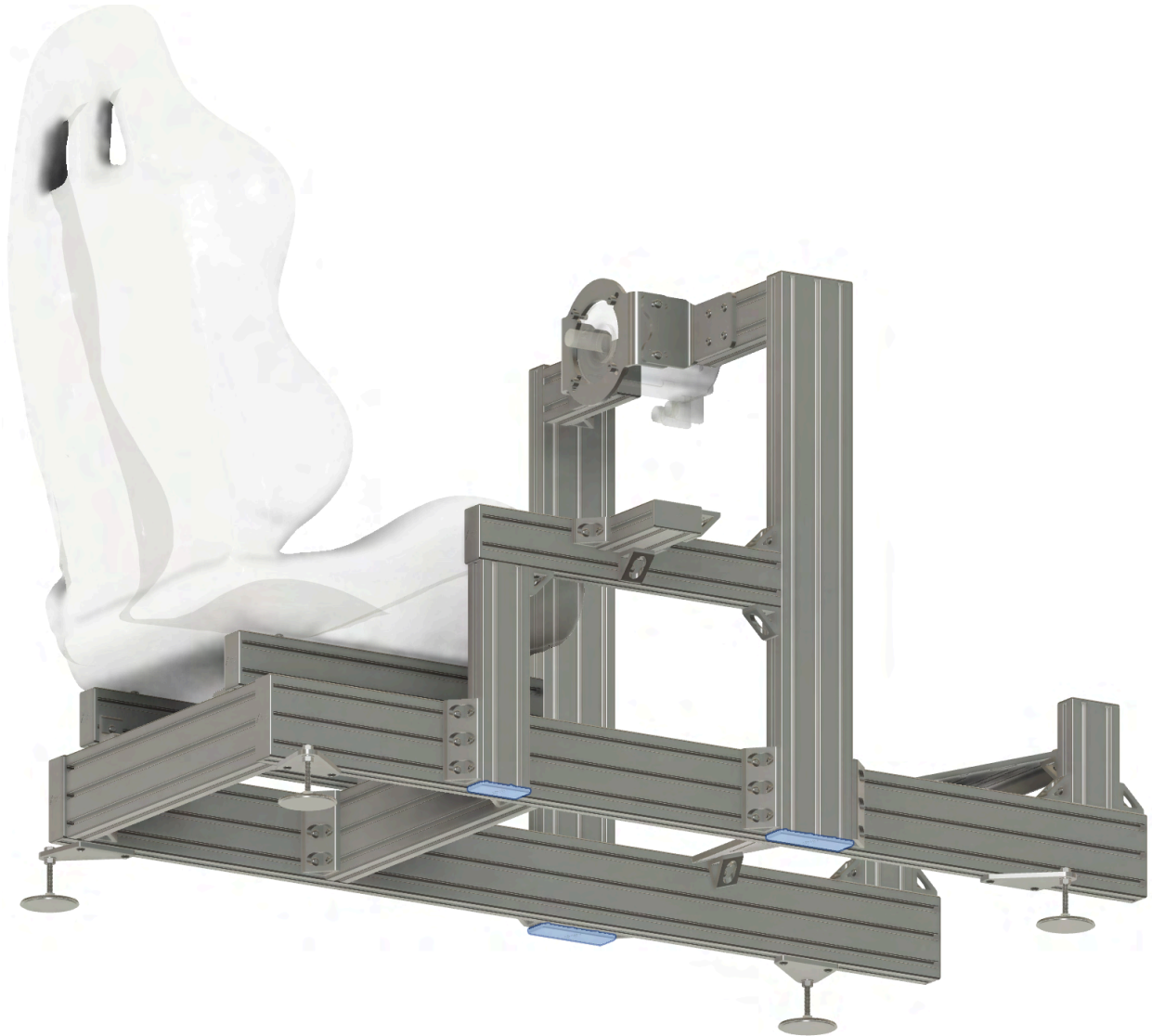


## Step 22: Install Bottom End Caps:

Hardware:

- 2 x 3-Hole End Caps
- 1 x 2-Hole End Cap

**Install all bottom end caps.** These are really important so you don't catch your ankle on any extrusions.



## Step 23: Race, Adjust & Tighten!

# Congratulations!!! You are now ready to race.

Our Cockpits are designed to be completely customizable, so feel free to adjust everything to suit your needs and preferences.

**After a few days of use, go back around and tighten up all screws to keep everything nice and rigid after it settles in.**



If you need anything, please let us know. We are here to help!

Fast Email Support: [Team@RacingCockpits.com](mailto:Team@RacingCockpits.com)  
Fast TXT Support: +1(833)RACING2 (833-722-4642)

Page 43



RCP Cockpit PRO Manual (v.02/2024.1)