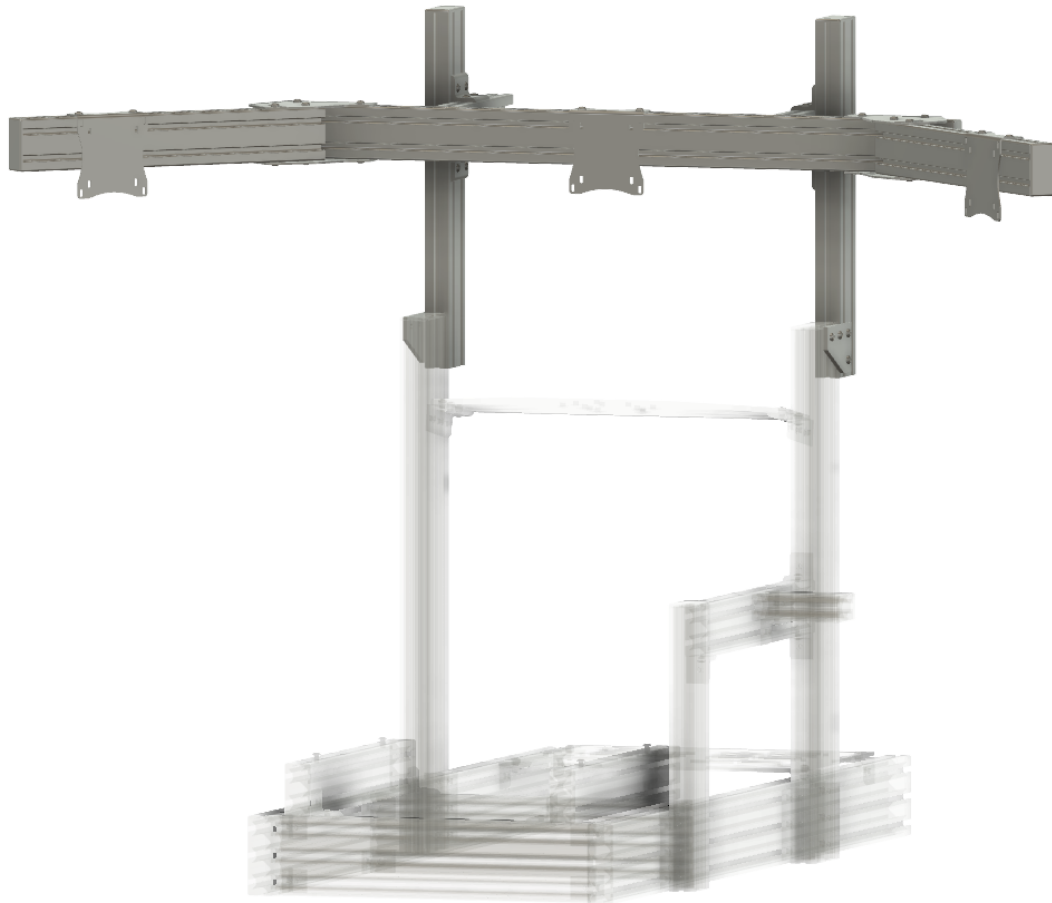




PRO Series - TRIPLE Monitor Mount Manual (v.04/2021.1)

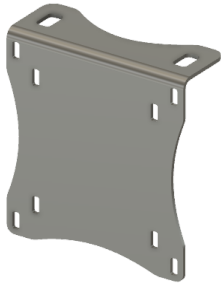


If you need any assistance building, please let us know. We are here to help!

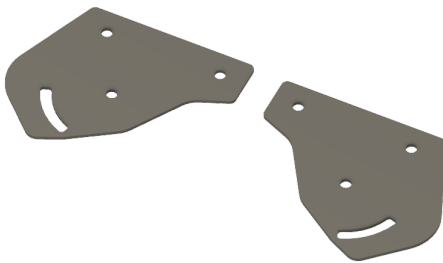
Team@RacingCockpits.com +1(833)RACING2

©2021 Racing Cockpits Operating Company, LLC

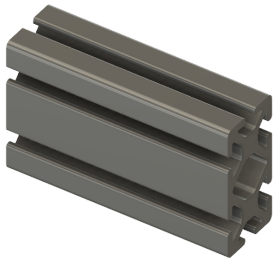
RCP Cockpit PRO: Parts Guide



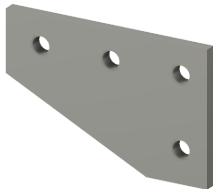
Vesa Mounts



Pivot Plates (Right Hand & Left Hand)

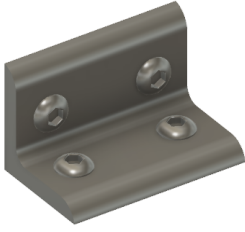


2-Slot Profile

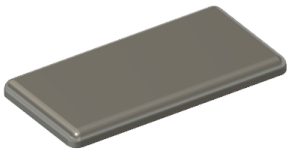


4-Hole Joiner Bracket

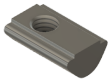
RCP Cockpit PRO: Parts Guide (Cont.)



4-Hole 90° Corner Bracket



2-Hole End Cap



Standard Spring T-Nut



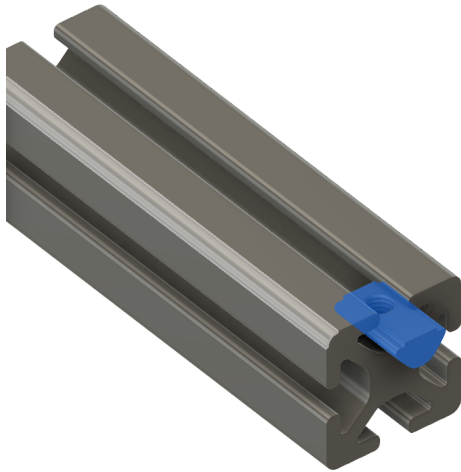
16mm Standard Bolt



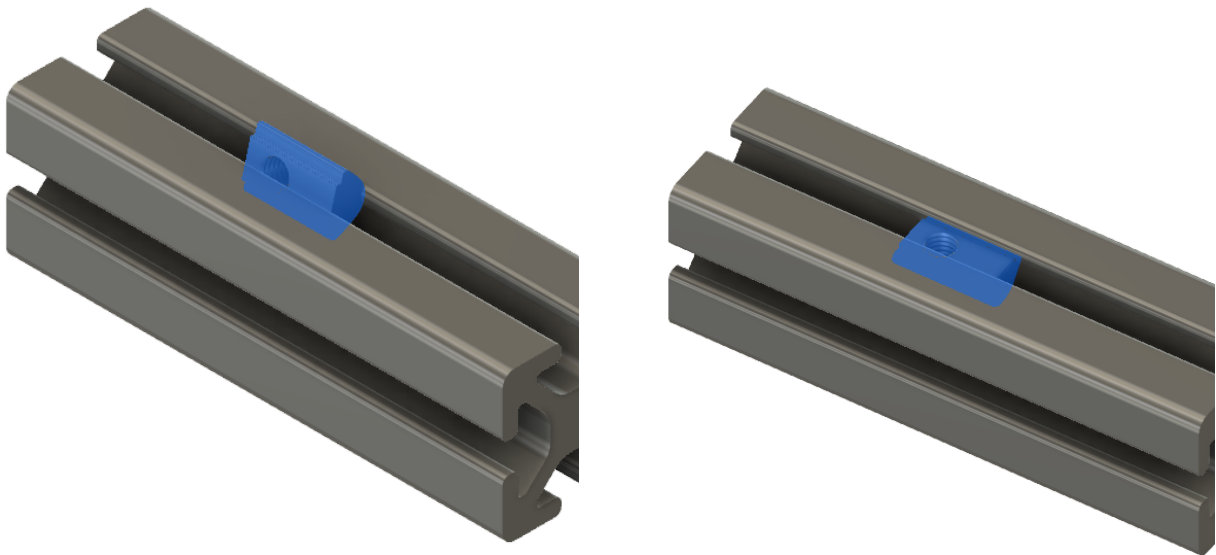
12mm SHORT Bolt

How to Use T-Nuts: A Quick Guide

Method 1: Simply slide T-Nut into T-Slot from the side.

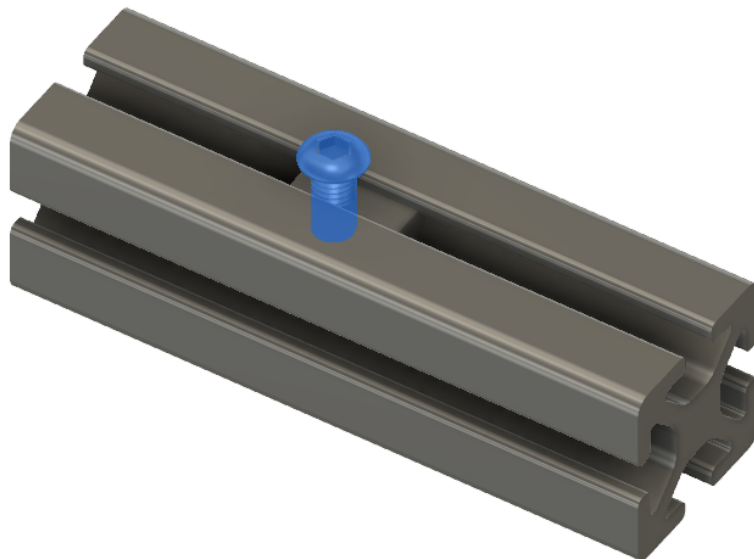
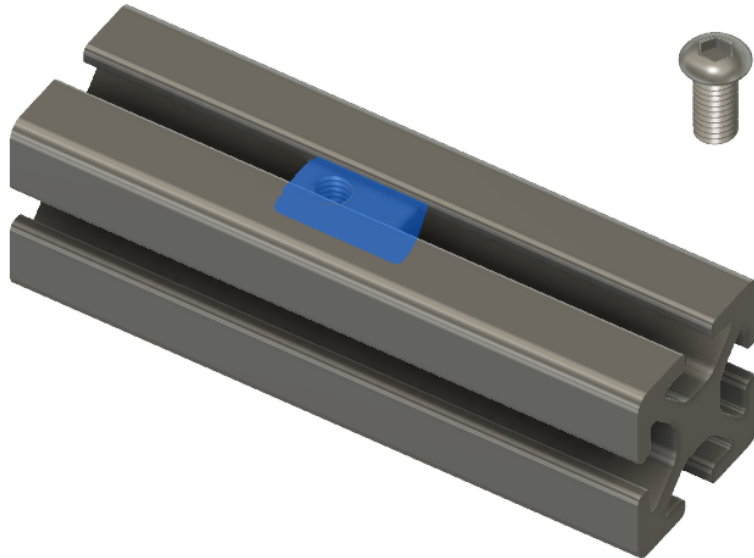


Method 2: Push T-Nut into T-Slot at an angle then snap into place so it ends up flat. You can lever the allen wrench in the screw hole to help with this. ***This method is what you will use once the ends are blocked.***



How to Use T-Nuts: A Quick Guide (Cont.)

Once T-Nut is in place, simply secure bracket etc. with the correct length bolt.



PRO TIP: If you are installing vertically and need to hold the T-Nut in place, you can put the long end of the allen wrench into the T-Slot channel to hold it from below while hand tightening the bolt to secure it from sliding. Then do final tightening with the allen wrench.

Page 5



Build Guide

Step 1: Connect Monitor Mount Uprights

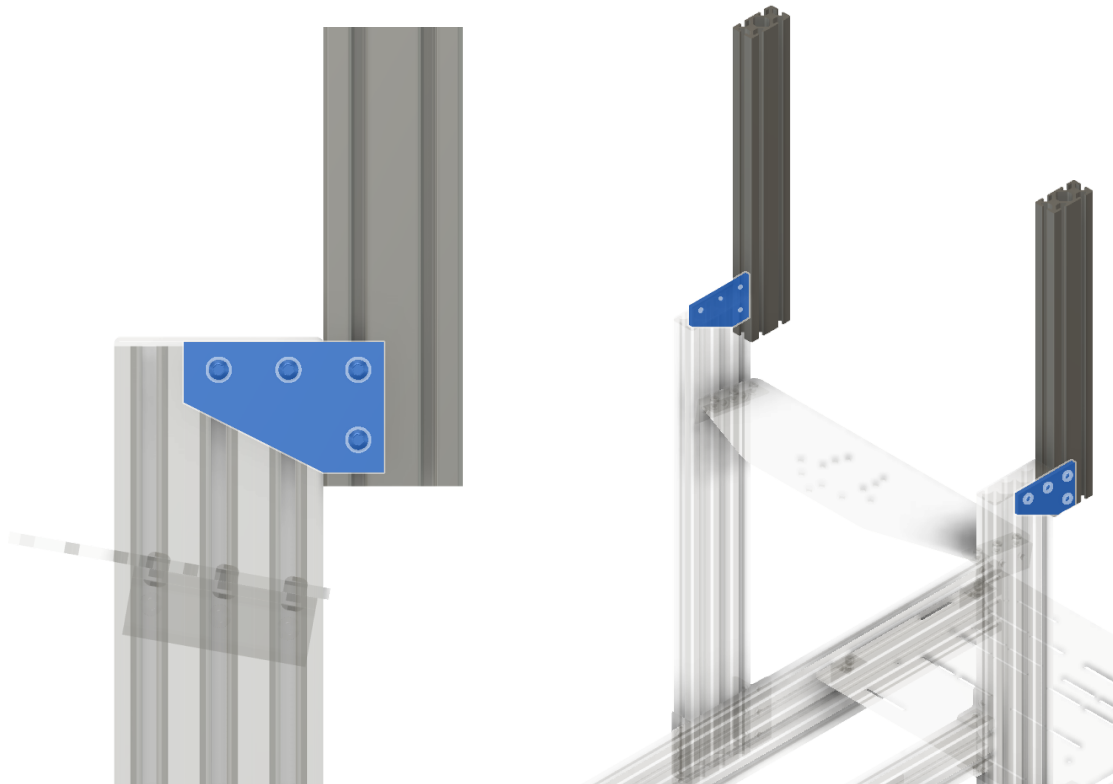
Profile:

- 2 x 19" 2-Slot Profiles

Hardware:

- 2 x 4-hole 90° Joiner Brackets
- 8 x 16mm Standard Bolts
- 8 x Standard Spring T-Nuts

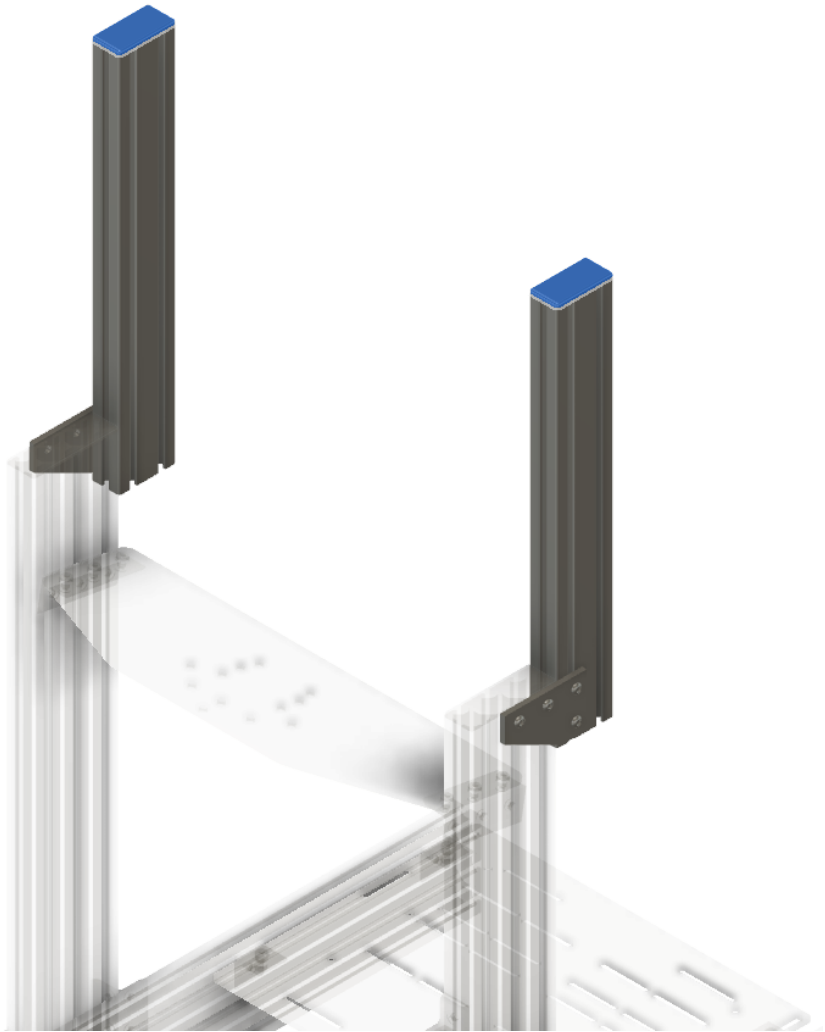
Connect 19" monitor uprights to the back of cockpit uprights. *TIGHTEN well.* These will hold a lot of weight.



Step 2: Add End Caps

Hardware:

- 2 x 2-Hole End Caps



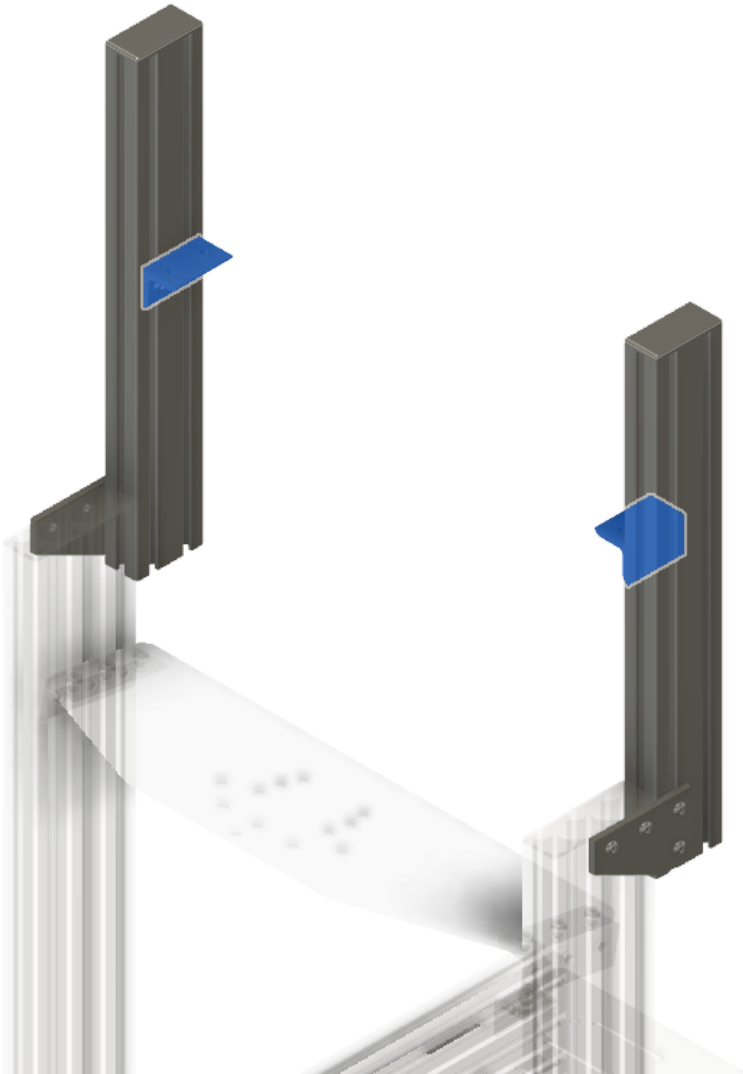
Page 7



Step 3: Add Lower Extender Arm Brackets

- 2 x 4-Hole 90° Corner Brackets
- 4 x 16mm Standard Bolts
- 4 x Standard Spring T-Nuts

Both need to be level with each other. Use a tape measure to ensure they are at the same height. You will fine tune the height for your monitors in a later step.



Step 4: Add Extender Arms

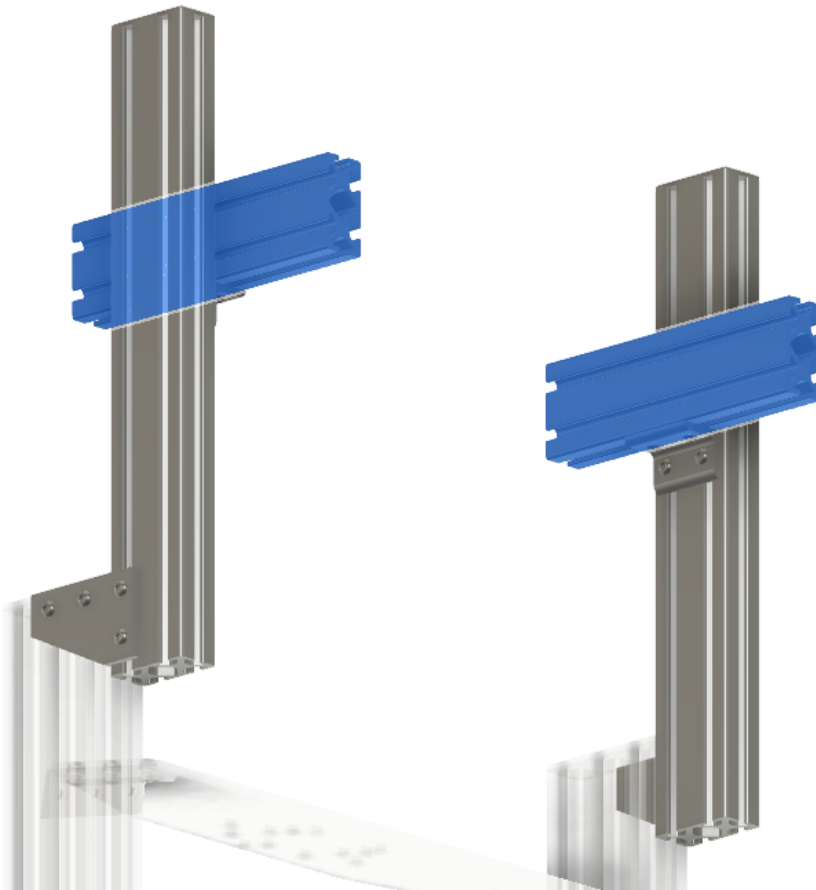
Profile:

- 2 x 10" 2-Slot Profiles

Hardware:

- 4 x 16mm Standard Bolts
- 4 x Standard Spring T-Nuts

Both need to be even front to back with each other. Use a tape measure to ensure they are mounted at the same distance. You will fine tune the distance to your monitors in a later step.

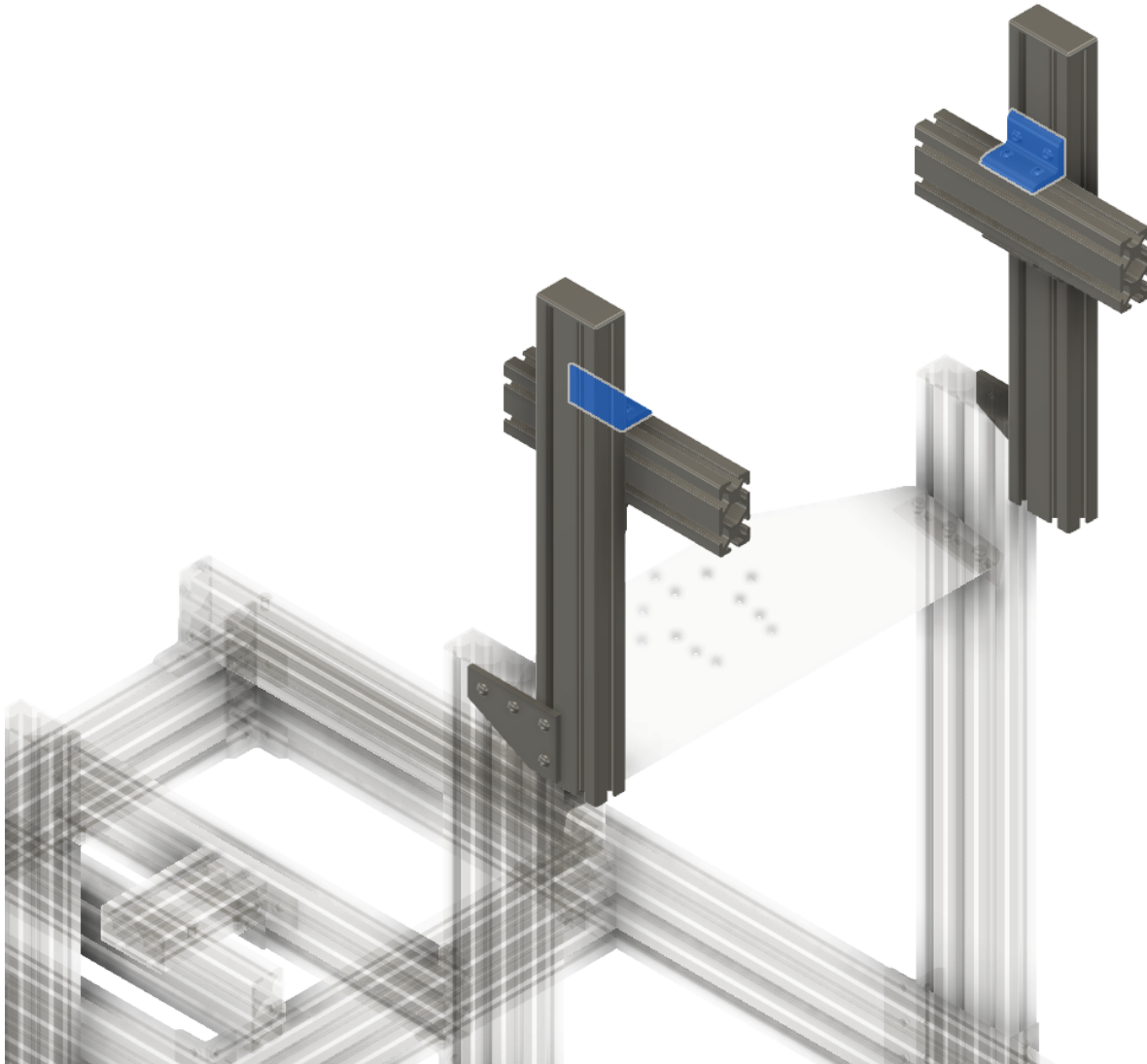


Page 9



Step 5: Add Upper Extender Arm Brackets

- 2 x 4-Hole 90° Corner Brackets
- 8 x 16mm Standard Bolts
- 8 x Standard Spring T-Nuts



Page 10



PRO Series - TRIPLE Monitor Mount Manual (v.04/2021.1)

Step 6: Add Horizontal Rail

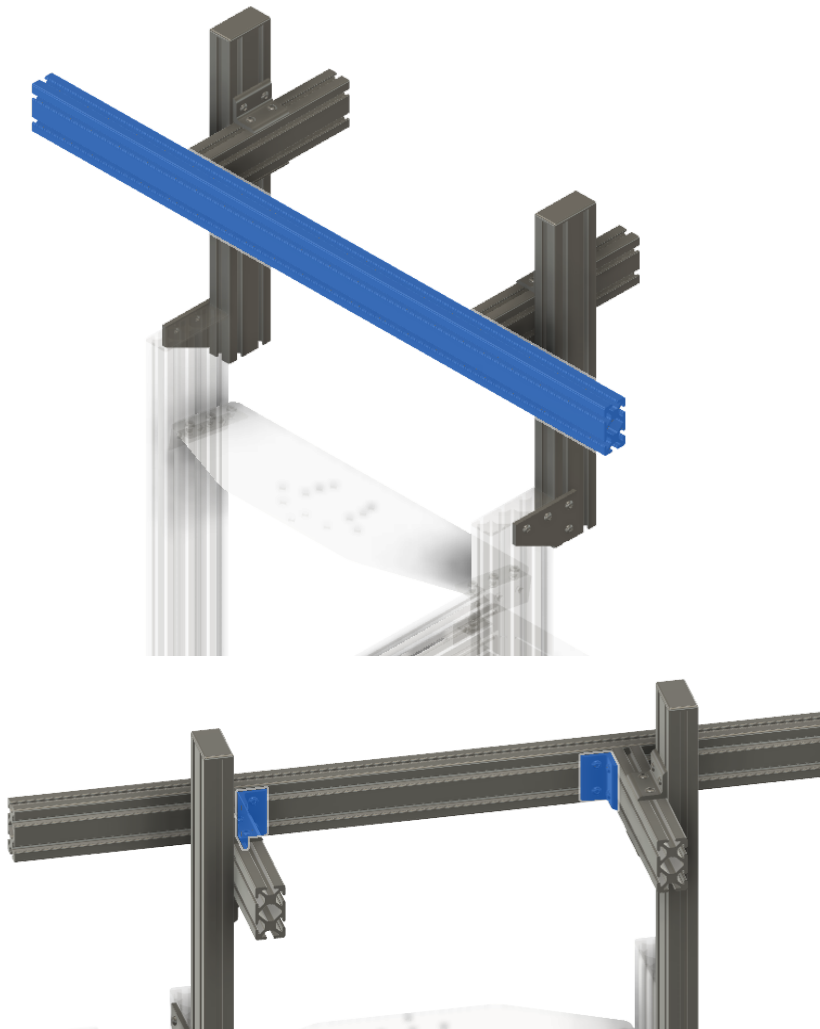
Profile:

- 1 x 40.5" 2-Slot Profile

Hardware:

- 2 x 4-Hole 90° Corner Brackets
- 8 x 16mm Standard Bolts
- 8 x Standard Spring T-Nuts

Horizontal rail needs to be centered. Use a tape measure to ensure the connections to the extender rails on each are the same distance.



Page 11

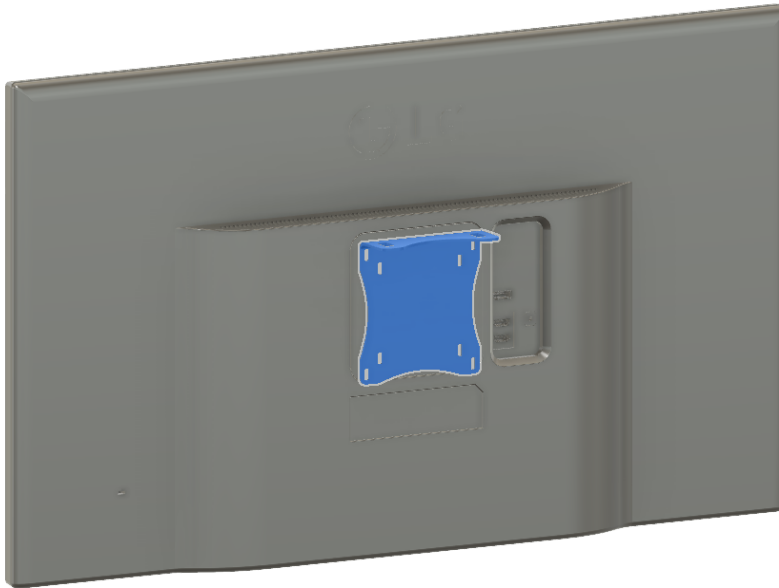


Step 7: Install Vesa Mount on Center Monitor

Hardware:

- 1 x Gaming Monitor (Purchased Separately)
- 1 x Vesa Mount
- 4 x 12mm Vesa Mounting screws

Tighten Vesa mount so screws are in the *middle of the vertical adjustment channels* and *not too tight*. This will allow for fine tuning up/down & rotate right / left. Use either Vesa 75 inner holes or Vesa 100 outer holes as needed to fit your monitor.



Page 12



Step 8: Install Center Monitor

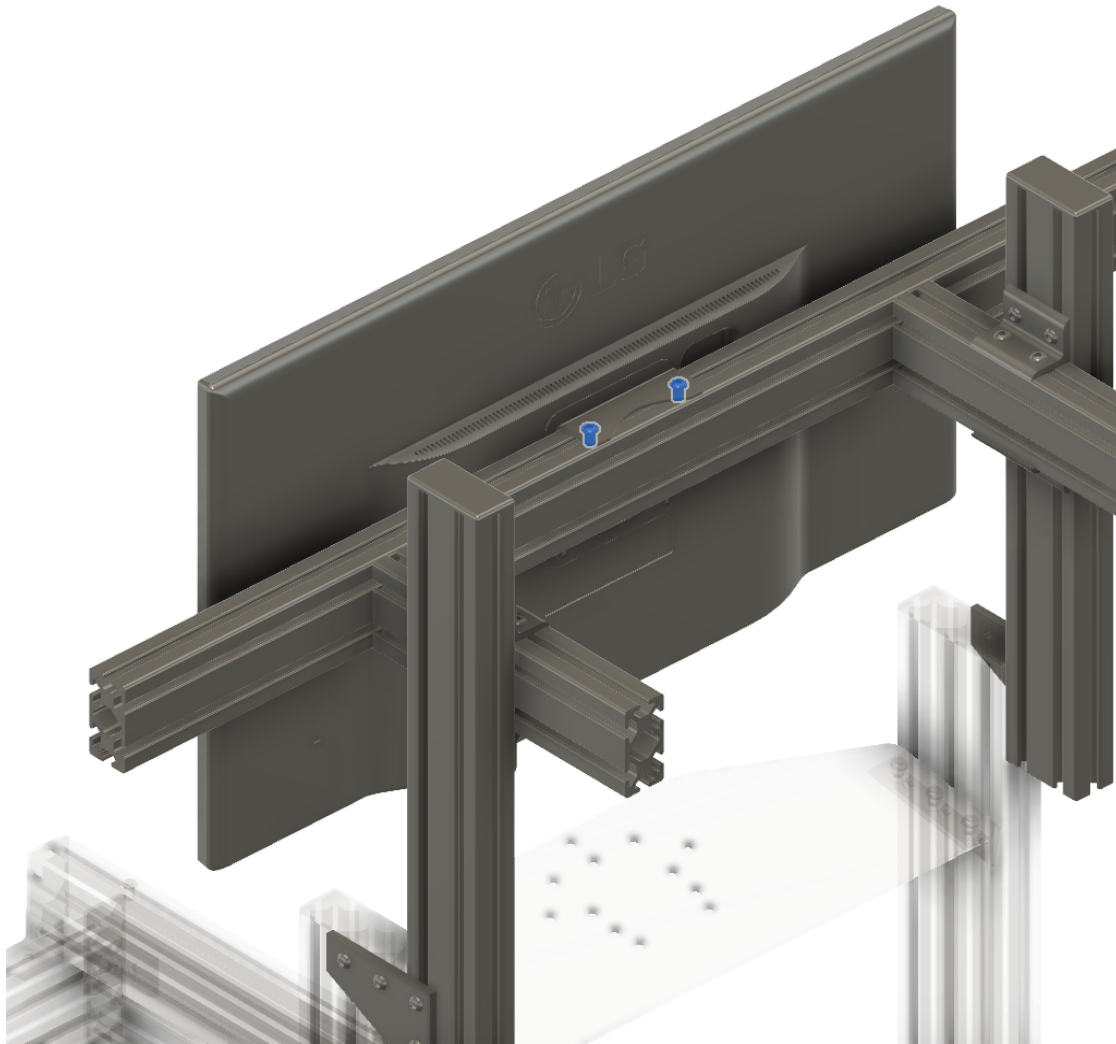
Hardware:

- 2 x 12mm **SHORT** Bolts
- 2 x Standard Spring T-Nuts

By keeping bolts slightly loosened you can make *Two Types of Adjustments*:

1. Slide right & left along the rail (Move until centered. Check with tape measure.)
2. Tilt monitor angle back and forward, which slides 12mm SHORT bolt in Vesa Mount top channel (Move until monitor is level. Check this using a level app on most smartphones.)

To lock monitor angle adjustment in place, tighten bolts while holding the monitor in position. Letting go before tightening will allow the monitor to slide back to default position.



Page 13



Step 9: Adjust Height & Distance

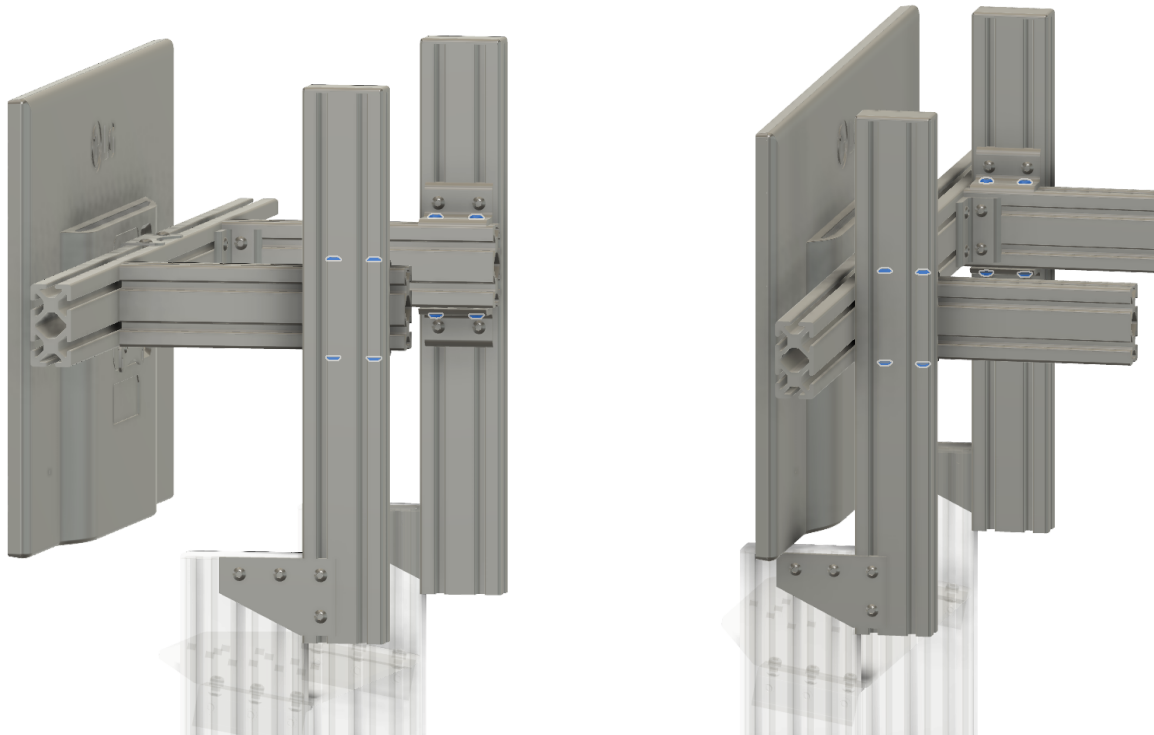
Now let's adjust the viewing height, and viewing distance.

Be careful to prevent damaging the monitor. Have a good grip when moving things, and be sure to re-tighten everything well once you're done with each step.

Pro Tip: Viewing distance should be set as close as possible. Ideally be just behind the steering wheel for best FOV (field of view).

Adjust Viewing Distance (Forward & Back):

Slightly loosen vertical bolts highlighted in blue.



Step 9: Adjust Height & Distance (Cont.)

Adjust Viewing Height (Up & Down):

Slightly loosen horizontal bolts highlighted in blue



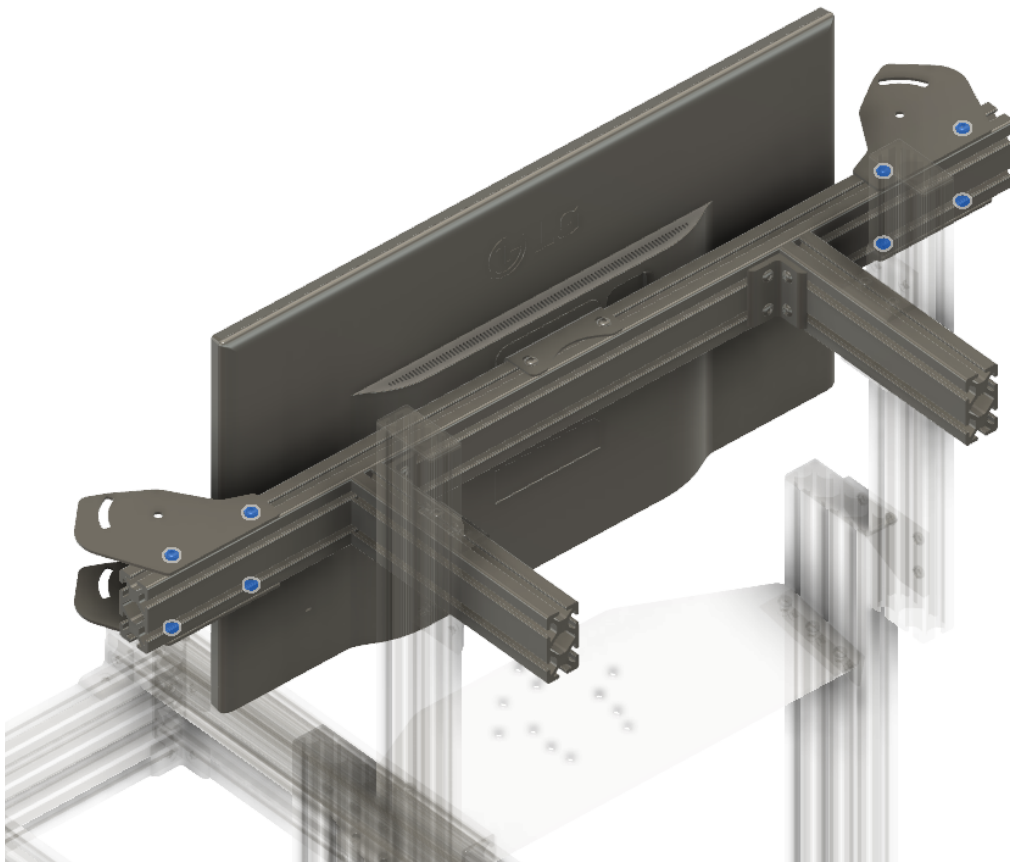
Remember to tighten everything once you're done!

Step 10: Install Top & Bottom Pivot Plates

Hardware:

- 2 x Top Pivot Plates (with angle print)
- 2 x Bottom Pivot Plates (blank)
- 8 x 12mm **SHORT** Bolts
- 8 x Standard Spring T-Nuts

*Install top pivot plates (**with print**) and bottom pivot plates (**no print**). Leave bolts slightly loose so you can slide them back and forth. **Mount them at the ends of the horizontal rail.** We can move them closer in a later step.*



Step 11: Install Side Arms

Profile:

- 2 x 19" 2-Slot Profile

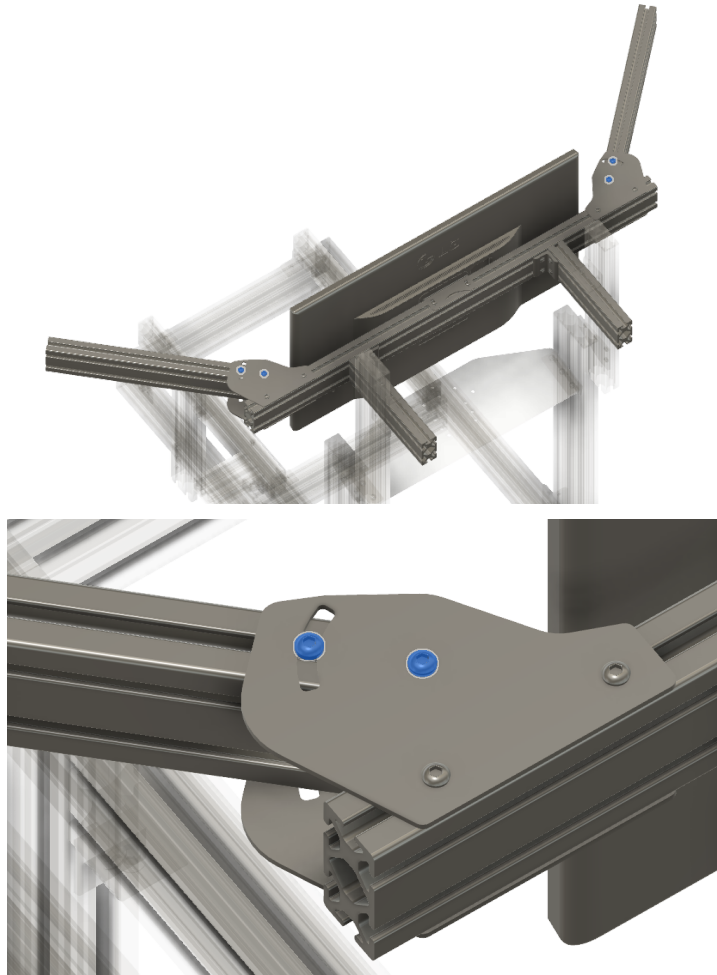
Hardware:

- 8 x 12mm **SHORT** Bolts
- 8 x Standard Spring T-Nuts

Connect 19" side arms with 12mm bolts in the top and bottom brackets. You may need to slide the top and/or bottom slightly to get it all lined up. This is normal.

To pivot arms: Keep center bolts tight, just slightly loosen end bolts (top & bottom) in the angle adjustment channel. Then tighten all bolts again to lock in place.

Use printed guides to set arms to 50° angle (you can change this later)



Page 17

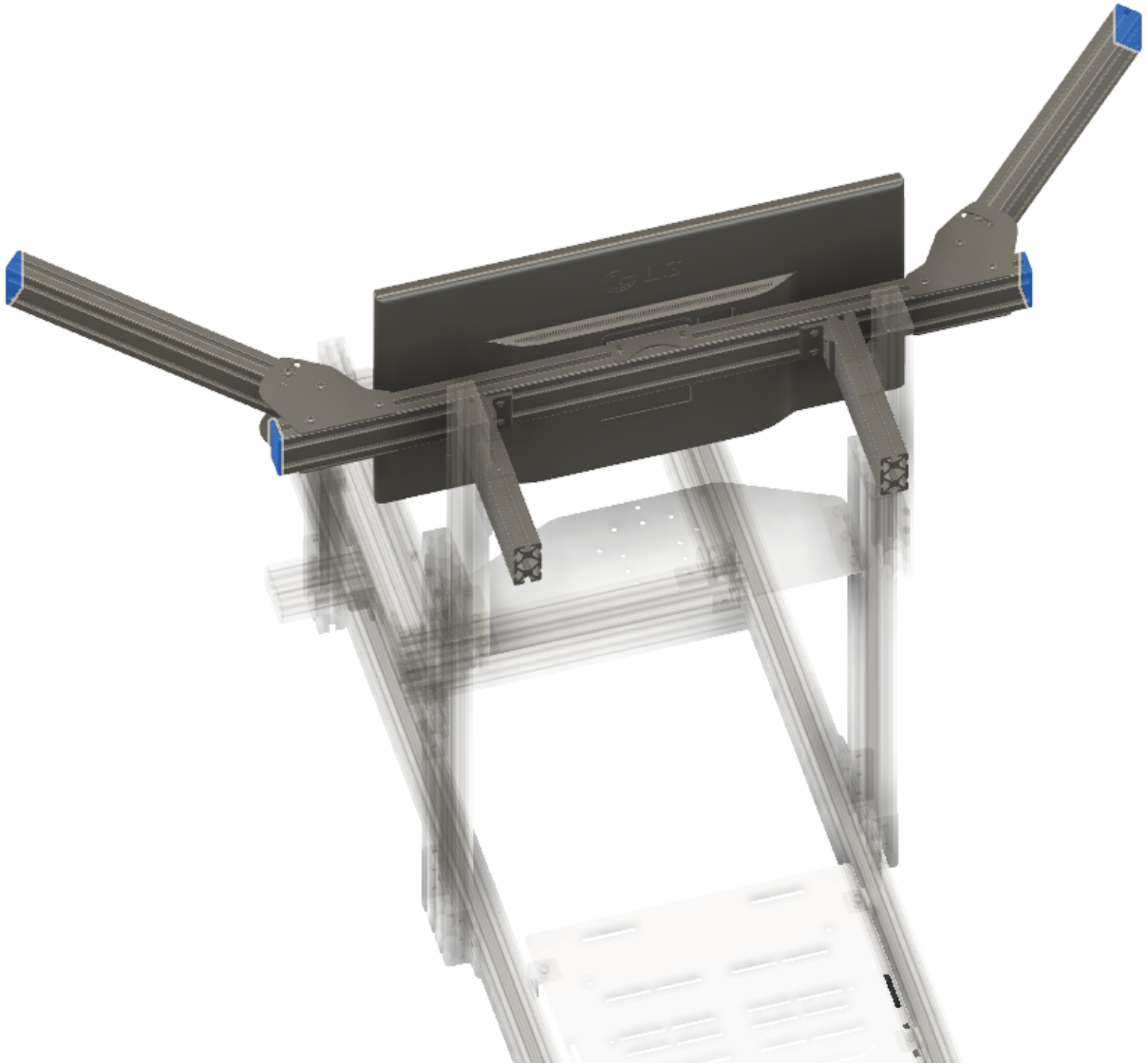


Step 12: Add End Caps

Hardware:

- 4 x 2-Hole End Caps

Install 2-Hole End Caps on ends of horizontal rail, and side arms.



Page 18



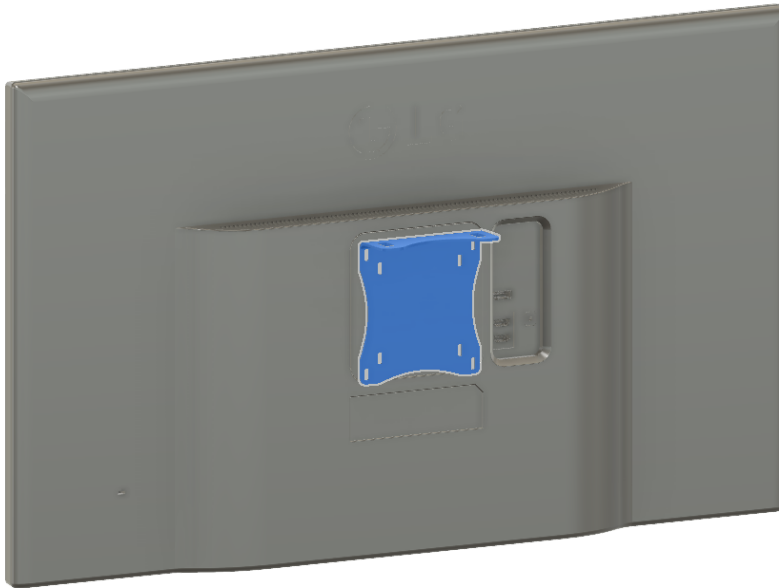
PRO Series - TRIPLE Monitor Mount Manual (v.04/2021.1)

Step 13: Install Vesa Mount on Left & Right Monitors

Hardware:

- 2 x Gaming Monitors (Purchased Separately)
- 2 x Vesa Mounts
- 8 x 12mm Vesa Mounting screws

Tighten Vesa mounts so screws are in the *middle of the vertical adjustment channels* and *not too tight*. This will allow for fine tuning up/down & rotate right / left. Use either Vesa 75 inner holes or Vesa 100 outer holes as needed to fit your monitor.



Page 19



Step 14: Install Left & Right Monitors

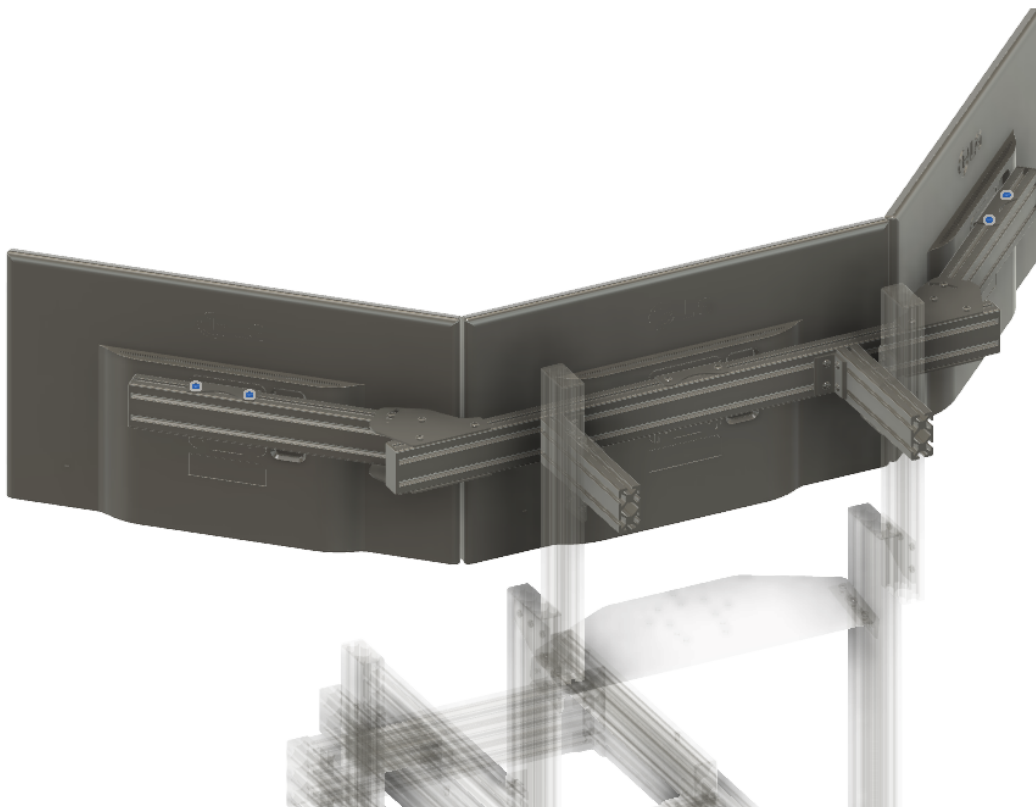
Hardware:

- 4 x 12mm **SHORT** Bolts
- 4 x Standard Spring T-Nuts

By keeping bolts slightly loosened you can make **Two Types of Adjustments:**

1. Slide right & left along the rail.
2. Tilt monitor angle back and forward, which slides 12mm SHORT bolt in Vesa Mount top channel (Move until monitor is level. Check this using a level app on most smartphones.)

To lock monitor angle adjustment in place, tighten bolts while holding the monitor in position. Letting go before tightening will allow the monitor to slide back to default position.

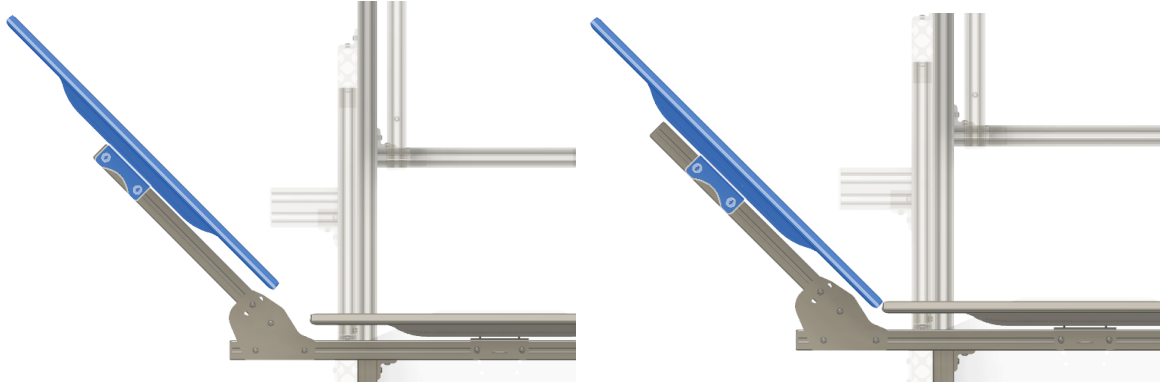


Step 15: Adjust & Align Monitors

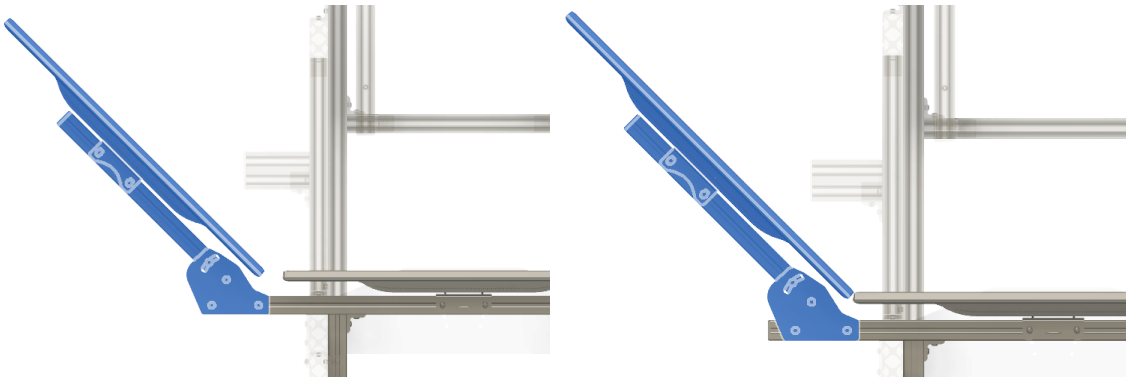
Now you'll use a combination of 2 adjustment types to get the side monitors mostly aligned (fine tuning in next step):

- 1) Slide side monitors along side arm rail (by slightly loosening top bolts)
- 2) Slide the entire arm assembly (pivot plates, arm, & monitor) together along the horizontal rail. (by slightly loosening pivot plate bolts on horizontal rail)

1) Slide side monitors along side arm rail example:



2) Slide entire arm assembly along the horizontal rail example:

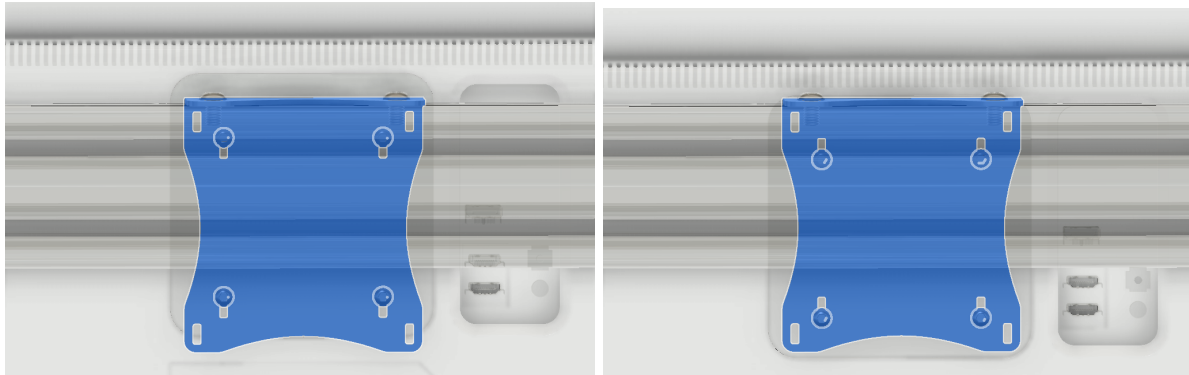


Step 16: Fine-Tune Monitor Alignments

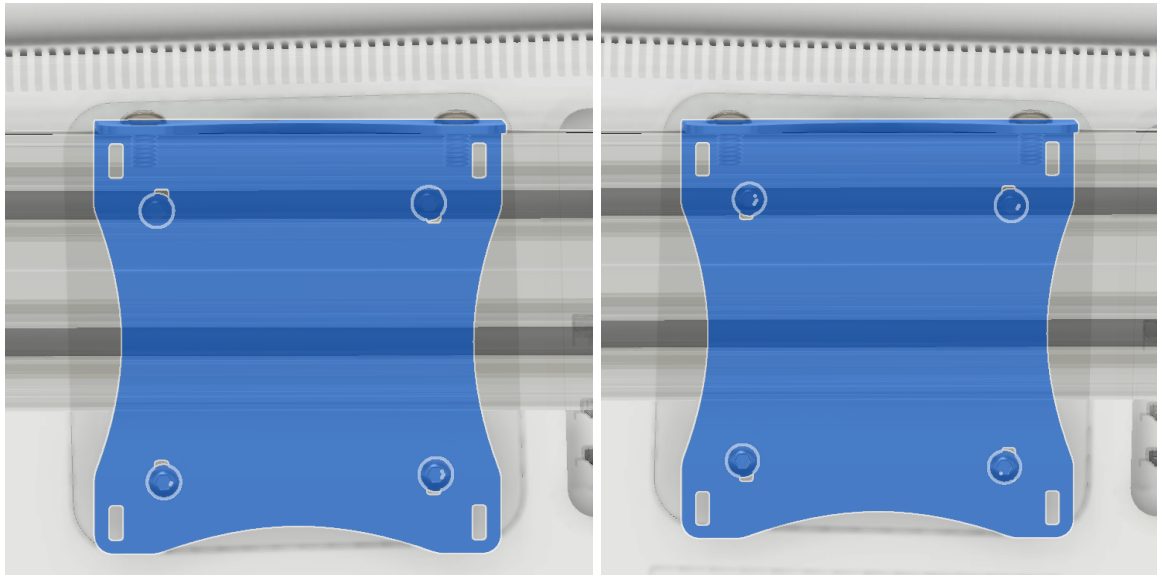
Now you'll use a combination of 3 adjustment types to get the monitors **perfectly** aligned:

- 1) **Slide side monitors up and down in Vesa mount vertical channels** (Slightly loosen bottom vesa screws, use slight force and rotation movements to slide up or down. Then re-tighten screws)
- 2) **Rotate monitors in Vesa mount vertical channels** (Slightly loosen bottom vesa screws, use slight force and rotation movements. Then re-tighten bottom screws)
- 3) **Adjust monitor tilt angle in Vesa mount top channels** (Slightly loosen bolts on top of rail, tilt monitors, then re-tighten bolts as you hold monitor at desired angle)

1) Monitor up & down example:

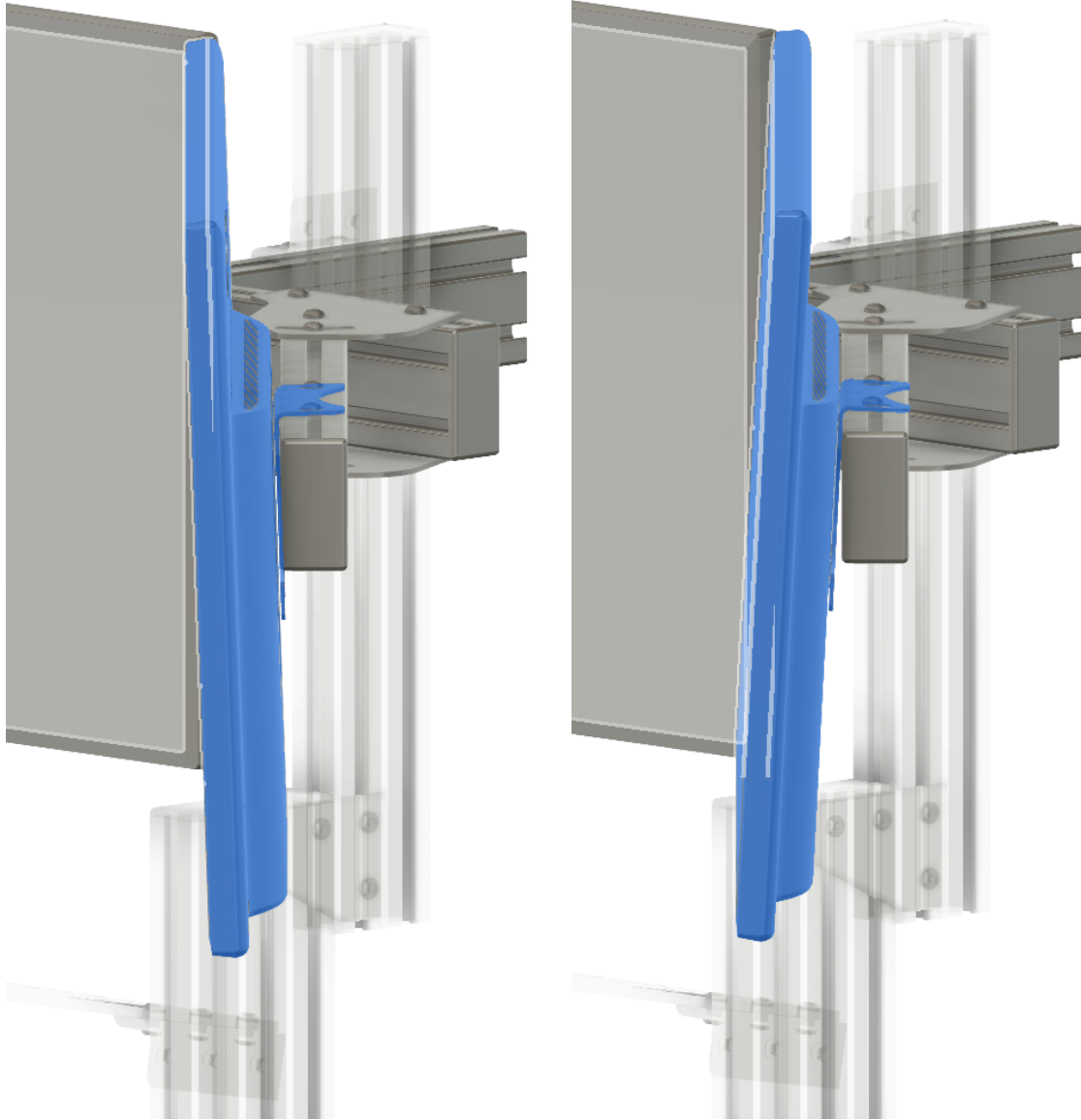


2) Rotate monitors left & right example:



Step 16: Fine-Tune Monitor Alignments (Cont.)

3) *Adjust monitor tilt angle forward & back with Vesa mount top channels:*



Step 17: Race, Adjust & Tighten!

Congratulations!!!

You are now ready to race.

Our Monitor Mounts are designed to be completely customizable, so feel free to adjust everything to suit your needs and preferences.

After a few days of use, go back around and tighten up all screws/bolts to keep everything nice and rigid after it settles in.

If you need anything, please let us know. We are here to help!

Fast Email Support: Team@RacingCockpits.com

Fast Phone Support: +1(833)RACING2

Page 24

