

## Certificate

Inspector: \_\_\_\_\_

QC: \_\_\_\_\_

P/N:17.0303.0320-02A2

## User Manual

### SAFETY INSTRUCTIONS

Please observe the following instructions to ensure safety use:

- 01 DO NOT attempt to replace the internal battery with anything other than authorized replacement battery by yourself.
- 02 DO NOT operate in wet conditions, let unit dry completely before using.
- 03 Ensure proper ventilation while in use and do not obstruct fan openings on use. Inadequate ventilation may cause damage to the power station.
- 04 DO NOT stack anything on top of the power station in storage or in use, vibration and impact may lead to poor connection to hardware inside.
- 05 DO NOT insert foreign objects into outputs or ventilation holes.
- 06 DO NOT place the power station near heat sources like furnace or ambient heater too close.
- 07 The power station generates the same potentially lethal AC power as household wall outlet, please take carefully and keep children away from it.

## User Manual

### General Specs

Rated power	Typical Capacity	Battery Type	Net Weight	Dimensions	Protection LV	Working Environment Humidity	Discharge Temperature	Charging Temperature
700W (1400W Surge)	537Wh	LiFe-P04	7.5kg/16.5lbs (The weight may subject to slightly change without notice)	278*200*198mm (10.947*7.877*7.79 inches)	IP21	10%-90%	-20-40°C/ -4-104°F	0-40°C/ 32-104°F

### Output Specs

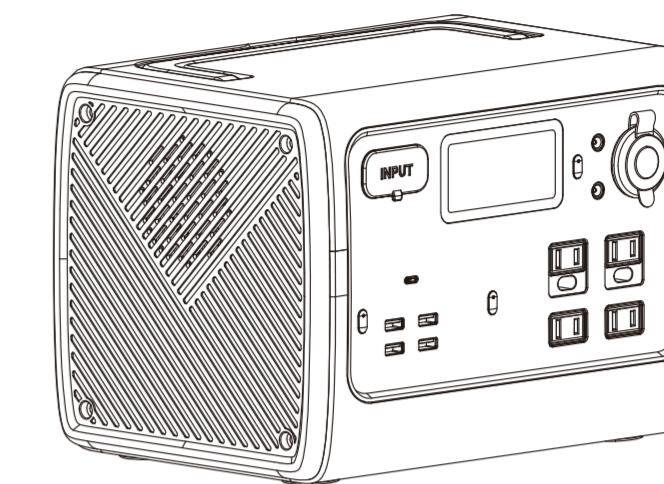
AC	USB-A	USB-C	Cigarette Lighter	5521	Wireless Charging Pad	Car Charging	AC-DC Adapter Charging	Solar Charging	AC + PV dual Charging	Dual AC Charging
100-120VAC x4, US JP Version 220-240VAC x2, EU/UK/AU/Version 700W	5VDC, 3A	100W	12VDC, 10A, 120W	12VDC, 10A, 120W	5W/7.5W/10W/15W	98W@12V 196W@24V	90W 25-28VAC, 10A 200W Max	200W Max 12-28VDC, 8A	400W Max	400W Max Required extra charger

### Input Specs

### Common Loads Runtime/Charges

Smart Phone	LED Light Bulb	Television	Electronic Tools	Refrigerator	Slow Cooker
Around 40-50 Hrs 10Wh	Around 20-30 Hrs 20W	Around 5-6 Hrs 75W	Around 5-6 Hrs 80W	Around 4-5 Hrs 90W	Around 2-3 Hrs 200W

537Wh×DOD×η= (the current load power W) = available time (unit: hrs×times)  
Note: DOD is the battery discharge depth, η is the local inverter efficiency, DOD=90%, η=90%.

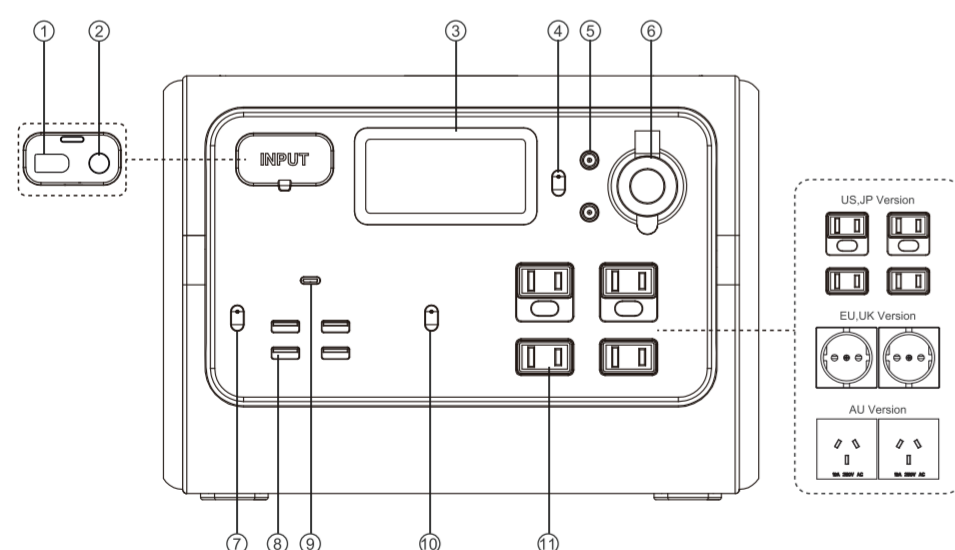


## 537Wh Portable Power Station

### User Manual

Please read this manual before use and follow its guidance. Keep this manual for future reference.

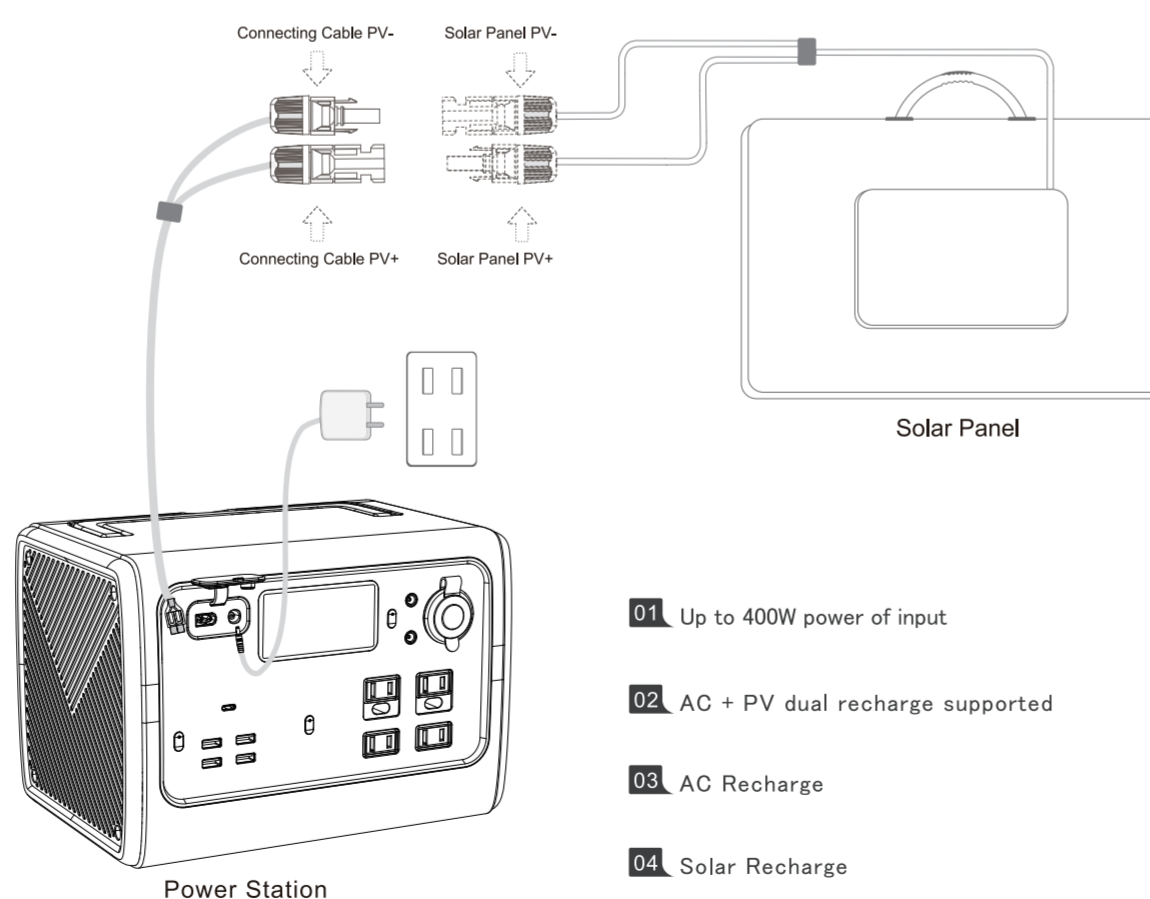
## User Manual



### QUICK GUIDE

- |                               |   |
|-------------------------------|---|
| 01 DC Charging Port           | 07 DC Output/Wireless Charging Power Button |
| 02 Adapter Charging Port      | 08 USB-A Output Port                        |
| 03 LCD Screen                 | 09 USB-C Output Port                        |
| 04 DC 12V Output Power Button | 10 AC Power Button                          |
| 05 DC 5521 Output Port        | 11 AC Outlet                                |
| 06 Cigarette Lighter Port     |   |

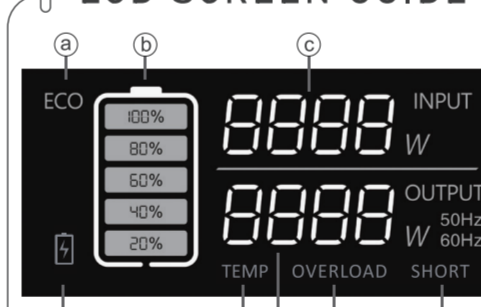
## User Manual



- 01 Up to 400W power of input
- 02 AC + PV dual recharge supported
- 03 AC Recharge
- 04 Solar Recharge

## User Manual

### LCD SCREEN GUIDE



- |                               |                                       |
|-------------------------------|---------------------------------------|
| a. ECO-Mode Icon              | e. Alert Icon for Temperature Anomaly |
| b. Battery Capacity           | f. Output Power                       |
| c. Input Power                | g. Alert Icon for Overload            |
| d. Alert Icon for low Voltage | h. Alert Icon for Short Circuit       |

Attention:  
Screen turns off when all output turns off in 2s.  
Screen turns off while on standby.

How to operate on power station to turn ON/OFF ECO Mode and change the working frequency:

- 01 To Enter Settings Mode: Turn "AC" mode to the off position. Press "AC" and "DC" buttons at same time for 2 seconds to enter "Settings" mode.
- 02 To Change Frequency Setting: Once in "Settings" mode, press the "AC" button to switch frequency of the AC output ports to either 50 or 60 Hz depending on your location.
- 03 Eco Mode: Once in "Settings" mode, press the "DC" button to turn ON / OFF the ECO mode.
- 04 Exit Settings Mode: Long press the "AC" and "DC" buttons at the same time for 2 seconds to save and exit the settings mode.

### What's in The Box



### Extra Options

### FREQUENTLY ASKED QUESTIONS

- 1 How do I clean for power station?  
A Dry, non-abrasive cloths to wipe will be perfect. The power station is a versatile tool for various adventures, simple cleaning would be required from time to time to keep the unit in a good condition.
- 2 How do I store my power station?  
A Please store the power station in a dry and cool place at the recommended temperature. Do not expose the power station to humid environment. If you want to store it for a long time, please charge your unit to 80% every 6 months to extend the lifespan of battery. Remind to turn off the unit before storing.
- 3 How do I know if my device will work with the power station?  
A Step1: You need to figure out the amount of power your devices require. Some research may be taken on internet search or the user guide of your device shall suffice.  
Step 2: Check the rated power of certain port on power station. For example, if the AC output port generates 700W of power and your device requires over 700W for an extended period of time, the power station will turn itself off.
- 4 How to claim the warranty?  
A Please place your after-sale requirement as the warranty card written to the platform where you order the product.