

Received Date: 6/27/2022

Report Date: 7/20/2022



Advanced Botanical Consulting & Testing Inc.

1169 Warner Ave, Tustin, CA 92780, Phone:(714)259-0384 Fax: (714)259-0385

Nutracap Labs

6080 McDonough Drive NW
Norcross, GA 30093

ATTN: Keith Story

TEL# (616) 425-1752

FAX#

Sample Name: HTLT TURK BUILDER

Item#

Lot# 2205165

Lab# 394809

PO#

Analysis:

Turkesterone (LC/MS)

Beta Ecdysterone (HPLC)

Beta Ecdysterone (LC/MS)

Total Ecdysterone (All peaks) (HPLC)

Average fill weight (based on 10)

Method:

Internal method

ALC153A

Internal method

Customer method

Result:

0.008 mg/cap

17.41 mg/cap

16.80 mg/cap

40.21 mg/cap

624.03 mg/capsule

Spec:

LC/MS

N/A

LC/MS

N/A

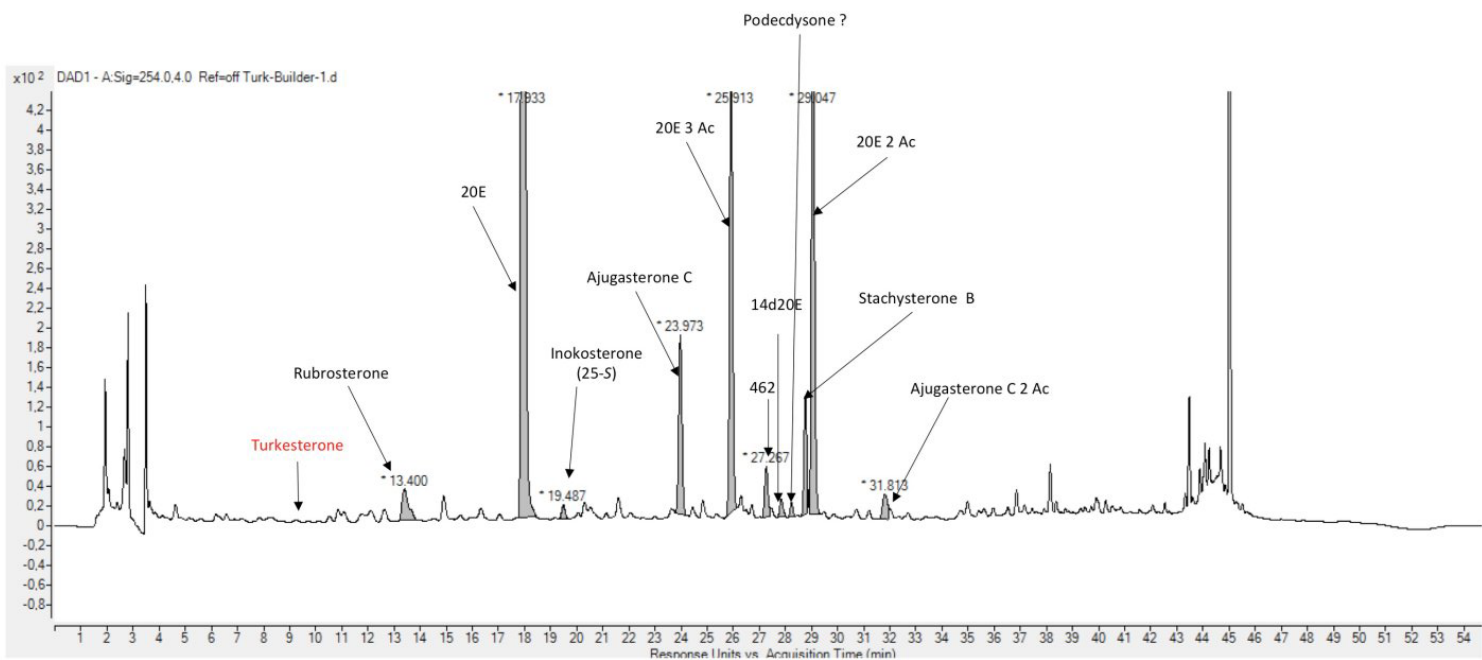


Approved by:

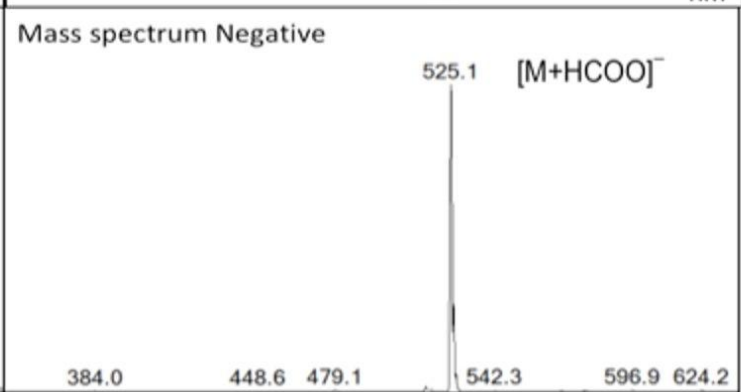
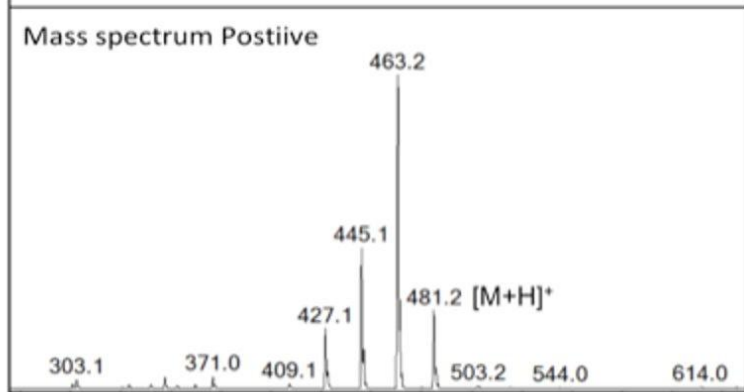
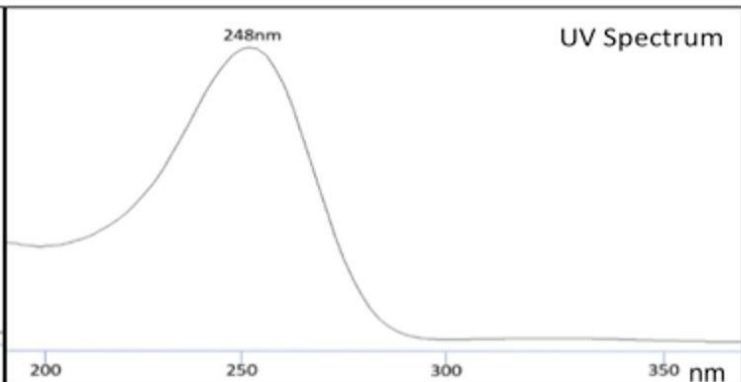
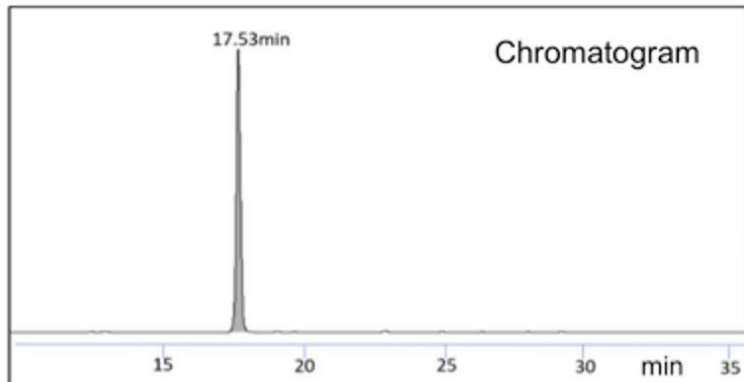
Katerina Baldwin

Katerina Baldwin, Lab Director

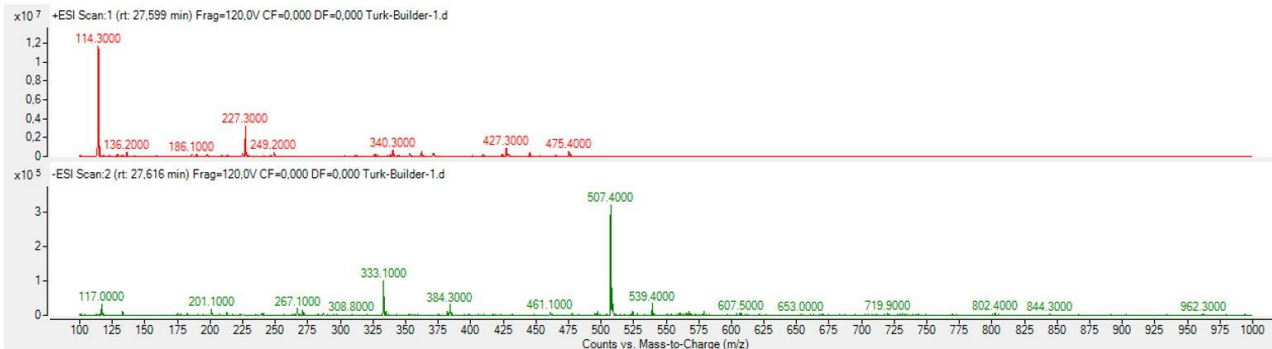
ABC Testing is an ISO accredited laboratory that specializes in the testing of botanical ingredients, dietary supplements, and foods. ABC is not an FDA drug registered facility, therefore any data or results provided by ABC are not intended to fulfill any requirements under the drug cGMPs dictated in 21 CFR Parts 210 and 211



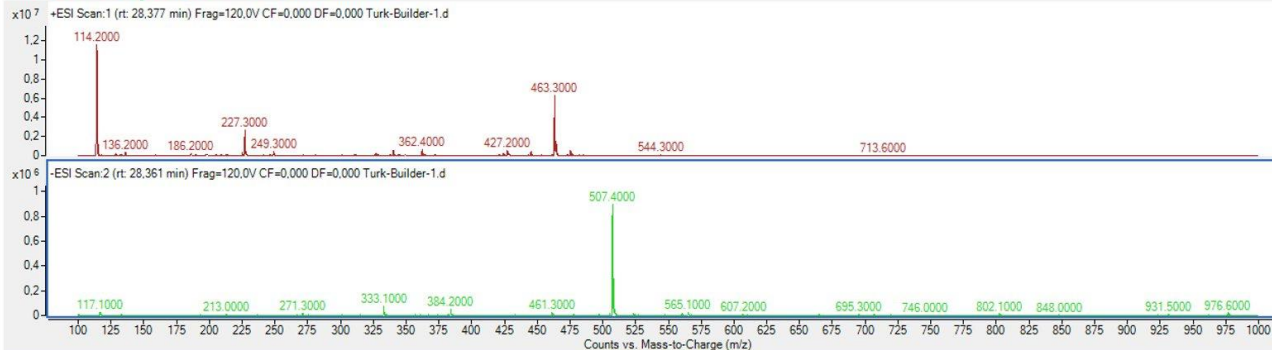
20E = 20-hydroxyecdysone, Ac = acetate. For structures, see ecdybase.org



?? (MW 462)

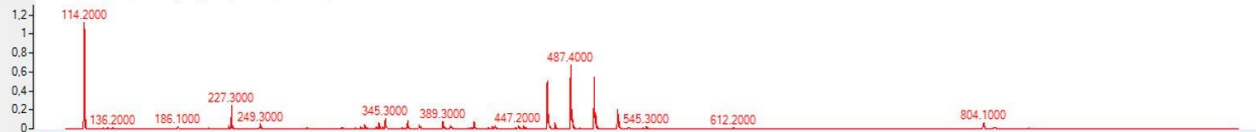


Podecdysone ? MW 462

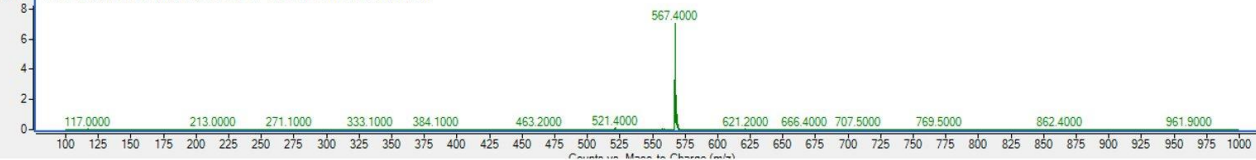


20E-3-acetate (MW 522)

x10⁷ +ESI Scan:1 (rt: 25,999 min) Frag=120,0V CF=0,000 DF=0,000 Turk-Builder-1.d

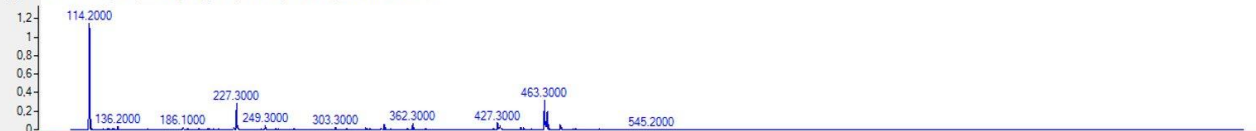


x10⁶ -ESI Scan:2 (rt: 26,037 min) Frag=120,0V CF=0,000 DF=0,000 Turk-Builder-1.d

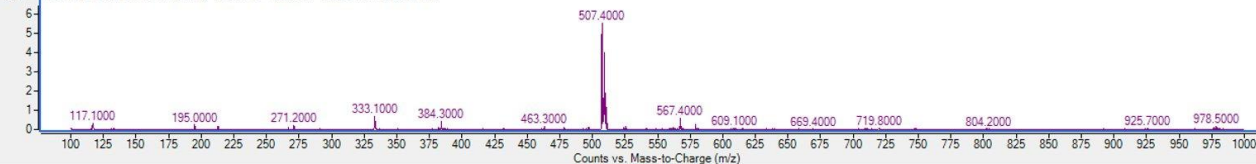


?? (MW 462)

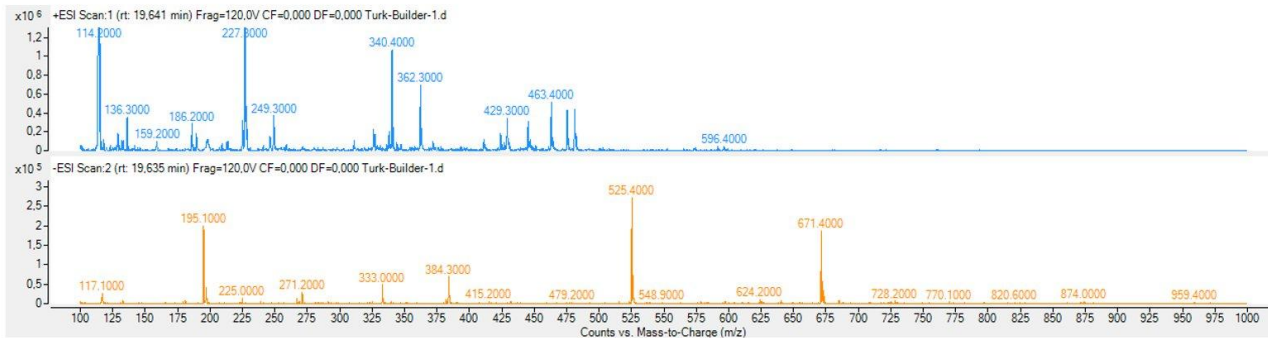
x10⁷ +ESI Scan:1 (rt: 27,377 min) Frag=120,0V CF=0,000 DF=0,000 Turk-Builder-1.d



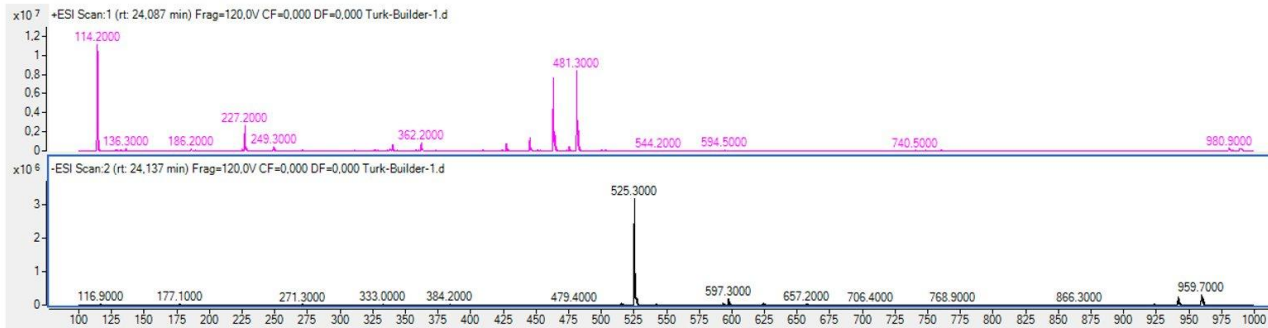
x10⁵ -ESI Scan:2 (rt: 27,427 min) Frag=120,0V CF=0,000 DF=0,000 Turk-Builder-1.d



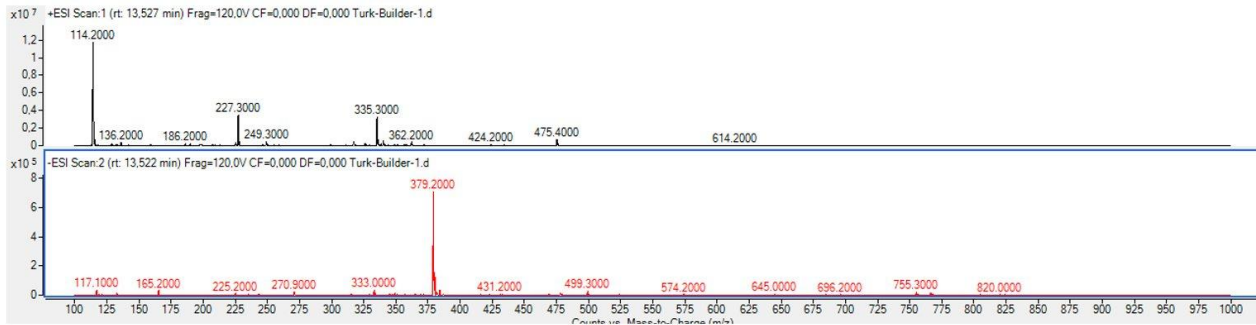
25-S-inokosterone (MW 480, impure)



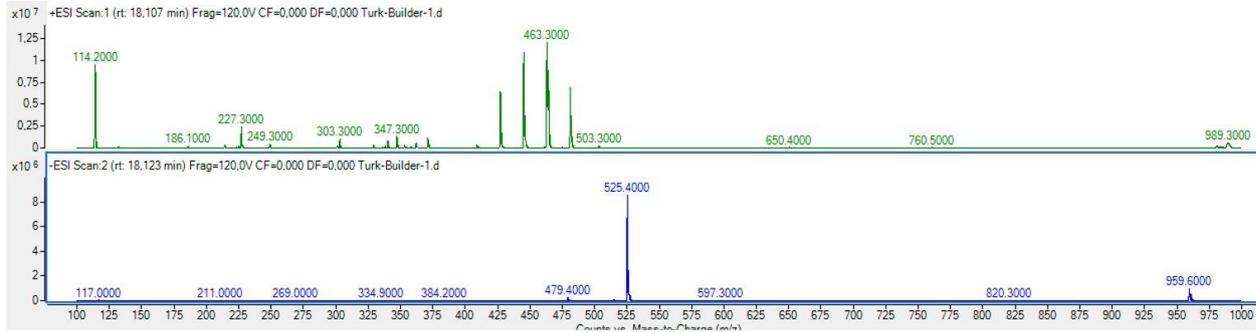
Ajugasterone C (MW 480)



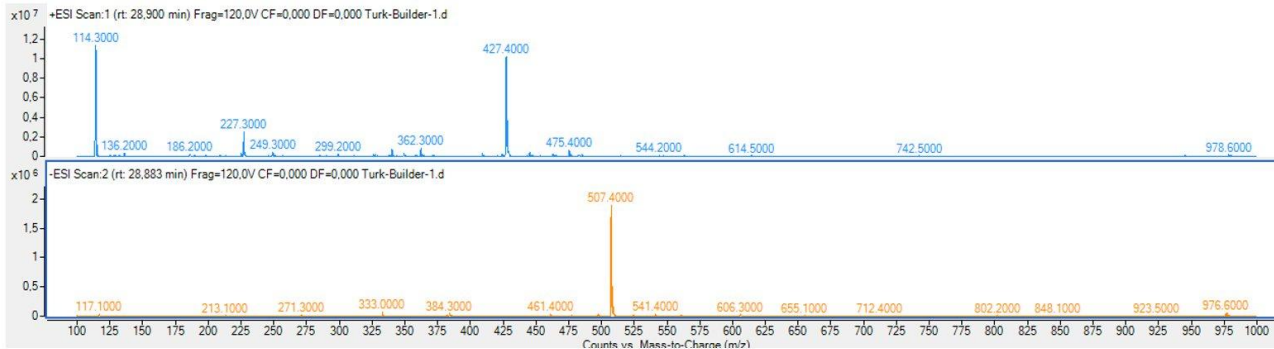
Rubrosterone (MW 334)



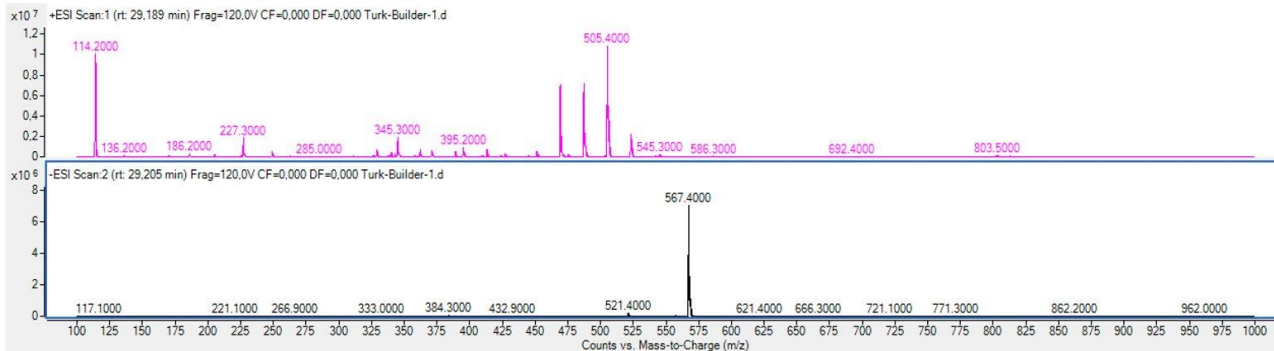
20E (MW 480)



Stachysterone B (MW 462)



20E-2-acetate (MW 522)



Ajugasterone C 2-acetate (MW 522)

