

SPECIFICATION

Range: **CLASP**

Design: **(a+b) Annalisa Dominoni, Benedetto Quaquaro**

“Snowsound Fiber Technology” sound-absorbing element fixed to the wall.

Fabric description:

Sound absorbing “Snowsound Fiber 3 Melange and Fiber 8 Bouclè” fabric made entirely of polyester, with 20x40 mm oval metal eyelets on the top for attachment to the structure.

The fabric has a **Class1** fire reaction (Italian standard) and **Euroclass B-s1, d0**.

The fabric is **Greenguard Gold certified**, which certifies its low VOC emission and its contribution to the quality of the indoor environment.

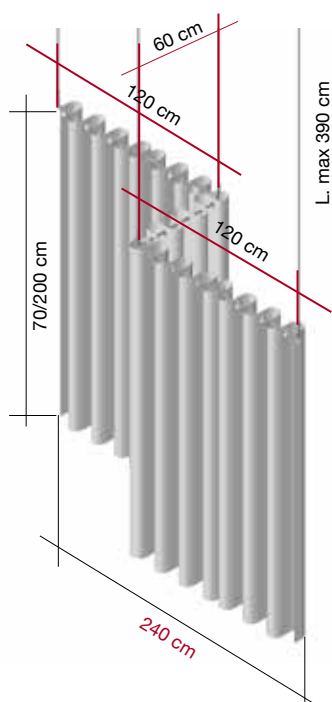
The fabric is **100% recyclable** and has no detectable formaldehyde content according to UNI EN 717-2. It doesn't contain felt or other organic materials (hard to recycle).

Fabric dimension: 138x200 cm = 2,8 m²
 138x70 cm = 0,96 m²

Frame and fixing kit description:

The frame is made up of tubes, made of ø 15 mm chromed steel rods, connected between them by joints in chromed steel that allow angular or in-line joining. To these joints are added respectively: threaded cylindrical elements ø 10 mm which allow the precise height adjustment of the cables by means of a pressure system with security lock; steel cables ø 1.5 mm and circular plates in chromed steel ø 40 mm equipped with two holes for fixing screws to the ceiling.

Dimension:



End joint



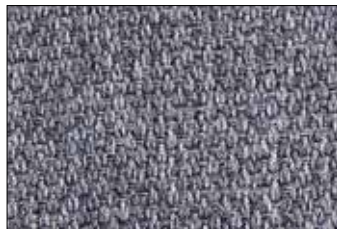
Central joint



Corner joint

Available colors:

300



Fiber 3 Melange

305



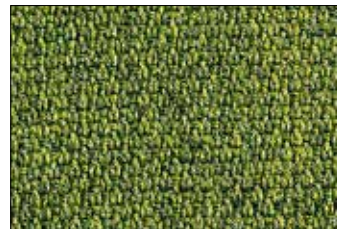
Fiber 3 Melange

306



Fiber 3 Melange

309



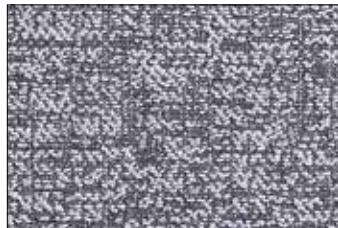
Fiber 3 Melange

310



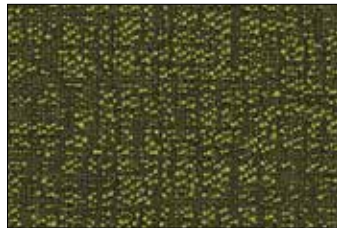
Fiber 3 Melange

801



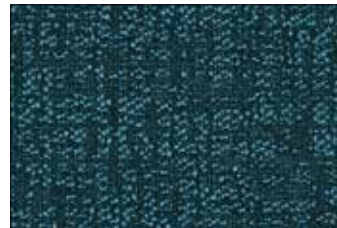
Fiber 8 Bouclè

804



Fiber 8 Bouclè

806



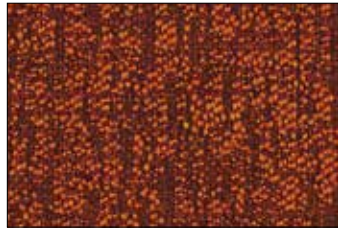
Fiber 8 Bouclè

808



Fiber 8 Bouclè

809



Fiber 8 Bouclè



Caimi Brevetti S.p.A. reserves, by its unappealable judgment, the right to modify without prior notice the building materials, the technical and aesthetic specifications, as well as the dimensions of the products in this technical sheet, where pictures are purely as an indication.